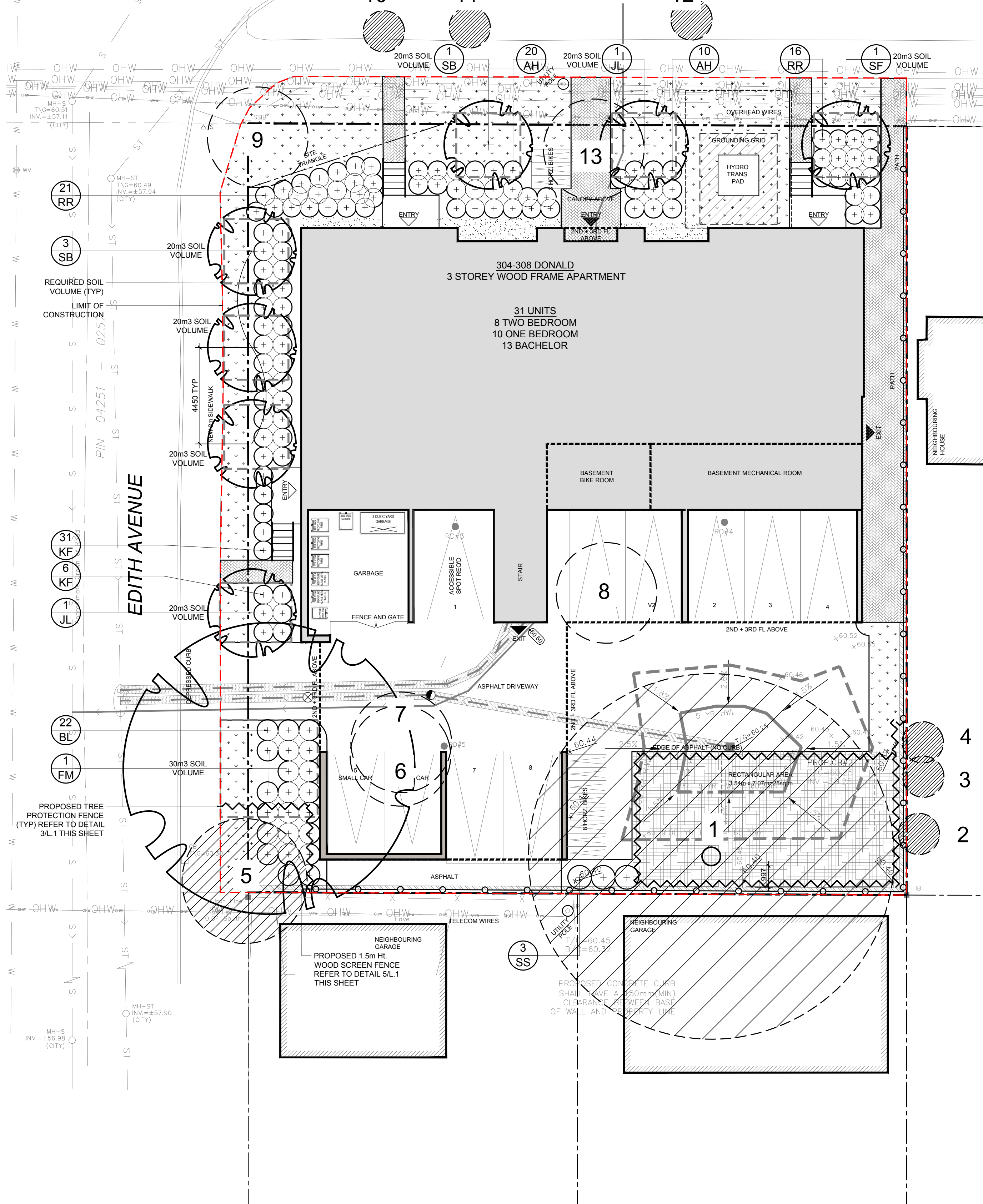


KEY PLAN: NTS



1 TREE CONSERVATION REPORT & LANDSCAPE PLAN
SCALE 1:125



GENERAL NOTES:

- It is the responsibility of the appropriate contractor or official to report any errors, omissions or discrepancies on this plan with actual site conditions to the Landscape Architect before proceeding with construction.
- The contractor is to notify all utility companies and authorities prior to any excavation and ascertain locations of underground services.
- The contractor is to reinstate all areas and items damaged as a result of construction activity.
- The contractor is to comply with all pertinent codes and by-laws.
- The contractor is to maintain a positive surface run-off throughout the entire construction period.
- The Landscape Architect is not responsible for subsurface conditions.
- The contractor is to identify all existing trees to remain on site with the Landscape Architect prior to construction.
- The contractor is to stake the proposed location of all plant material in conjunction with the Landscape Architect prior to excavation.
- Minimum distances for selected deciduous trees are as follows:
 - Sidewalks 1.5m
 - Public Streets 2.5m
 - Underground Infrastructure 2.0m
- All trees within 1m of underground utility trenches are to be excavated by hand.
- Remove all protective wrapping from tree trunks after installation.
- Staking of trees shall only be performed if necessary.
- Ensure that mulch is pulled back a min. distance of 75mm from base of tree trunk.

40 YEAR CANOPY CALCULATION:

- 1,090 m2 site area
- 1 Large deciduous trees proposed (154m2 ea.), 7 small trees proposed (7m2 ea) and 157m2 of existing canopy cover to remain
- 360m2 canopy cover =33% canopy cover
- *Large deciduous tree calculated at 14m spread, and small tree at 3m spread

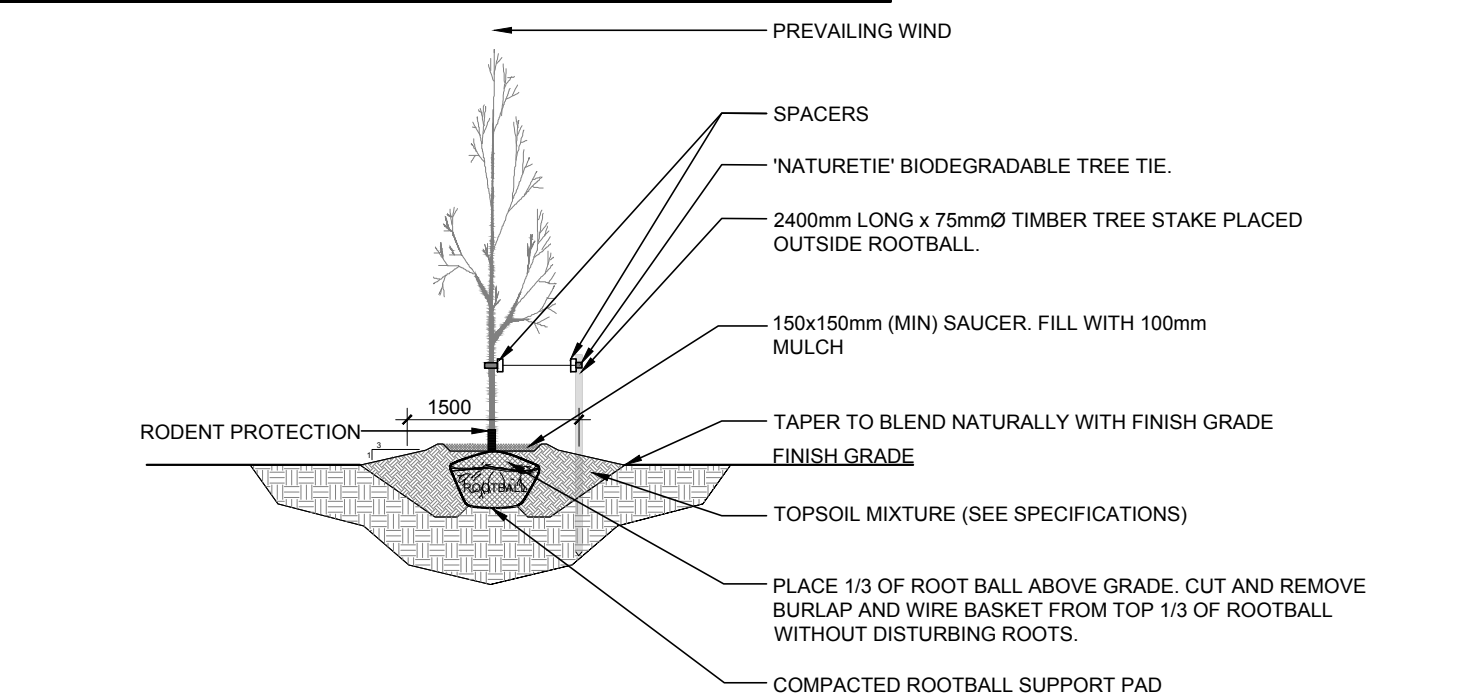
EXISTING TREE LIST

KEY	QTY	BOTANICAL NAME	COMMON NAME	SIZE	CONDITION	REMARKS	OWNERSHIP	COMMENTS
1	1	<i>Picea glauca</i>	White Spruce	850mm DBH est.	GOOD	To remain	308 Donald	Surrounded by wood enclosure
2	1	<i>Acer platanoides</i>	Norway Maple	100mm DBH est.	GOOD	To remain	312 Donald	Minimal % of crz will be impacted
3	1	<i>Acer platanoides</i>	Norway Maple	100mm DBH est.	GOOD	To remain	312 Donald	Minimal % of crz will be impacted
4	1	<i>Acer platanoides</i>	Norway Maple	100mm DBH est.	GOOD	To remain	312 Donald	Minimal % of crz will be impacted
5	1	<i>Acer platanoides</i>	Norway Maple	190,280mm DBH	GOOD	To remain	304 Donald	To be protected with tree protection fence
6	1	<i>Acer platanoides</i>	Norway Maple	500mm DBH	GOOD	To remain	304 Donald	Conflicting with new parking lot
7	1	<i>Acer platanoides</i>	Norway Maple	600mm DBH	GOOD	To remain	304 Donald	Conflicting with new parking lot
8	1	<i>Pinus strobus</i>	White Pine	780mm DBH	GOOD	To be removed	308 Donald	Conflicting with new parking lot and building
9	1	<i>Acer platanoides</i>	Norway Maple	4x200-270mm DBH	GOOD	To be removed	City of Ottawa	Within sight triangle
10	1	<i>Syringa reticulata</i>	Japanese Tree Lilac	50mm DBH	GOOD	To remain	City of Ottawa	Newly planted in boulevard
11	1	<i>Acer negundo</i>	Manitoba Maple	50mm DBH	GOOD	To remain	City of Ottawa	Volunteer tree
12	1	<i>Amelanchier canadensis</i>	Serviceberry	50mm DBH	GOOD	To remain	City of Ottawa	Newly planted in boulevard
13	1	<i>Acer platanoides</i>	Norway Maple	390mm DBH	GOOD	To be removed	308 Donald	Conflicting with new walkway

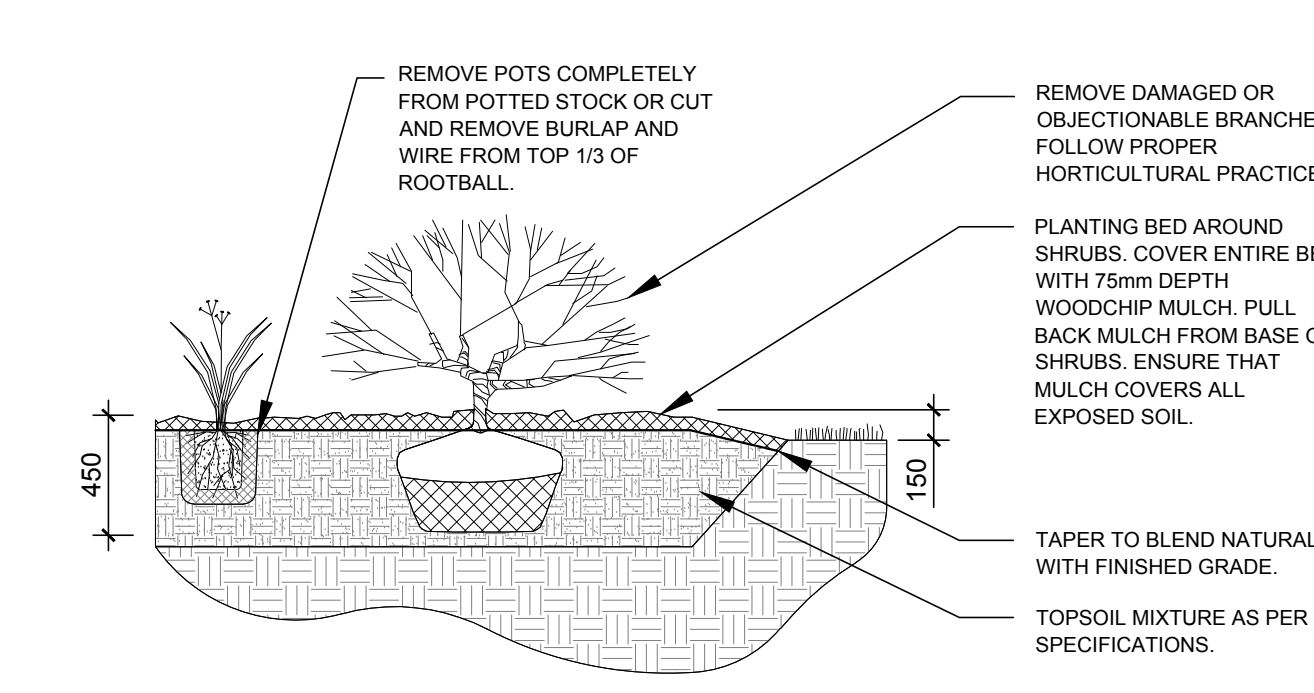
PROPOSED PLANT LIST

KEY	QTY	BOTANICAL NAME	COMMON NAME	SIZE	CONDITION	REMARKS
TREES						
* FM	1	<i>Acer x freemanii</i>	Freeman's Maple	50mm cal.	B&B	Proposed on private property
JL	2	<i>Syringa reticulata</i>	Japanese Tree Lilac	50mm cal.	B&B	Proposed on private property
* SB	4	<i>Amelanchier canadensis</i>	Shadblow Serviceberry	50mm cal.	B&B	Proposed on private property
* SF	1	<i>Amelanchier laevis 'JFS-ARB'</i>	Spring Flurry Serviceberry	50mm cal.	B&B	Proposed on private property
SHRUBS						
AH	30	<i>Hydrangea arborescens 'Annabelle'</i>	Annabelle Hydrangea	1 gallon pot	Potted	Space 1000mm o.c.
SS	3	<i>Sorbaria sorbifolia</i>	False Spirea	600mm ht.	Potted	Space 1000mm o.c.
RR	37	<i>Rosa rugosa</i>	Rugosa Rose	600mm ht.	Potted	Space 1000mm o.c.
ORNAMENTAL GRASSES						
BL	22	<i>Leymus arenarius 'Blue Dune'</i>	Blue Lyme Grass	250mm pot.	Potted	Space 800mm o.c.
KF	37	<i>Calamagrostis 'Karl Foerster'</i>	Karl Foerster Grass	250mm pot.	Potted	Space 800mm o.c.

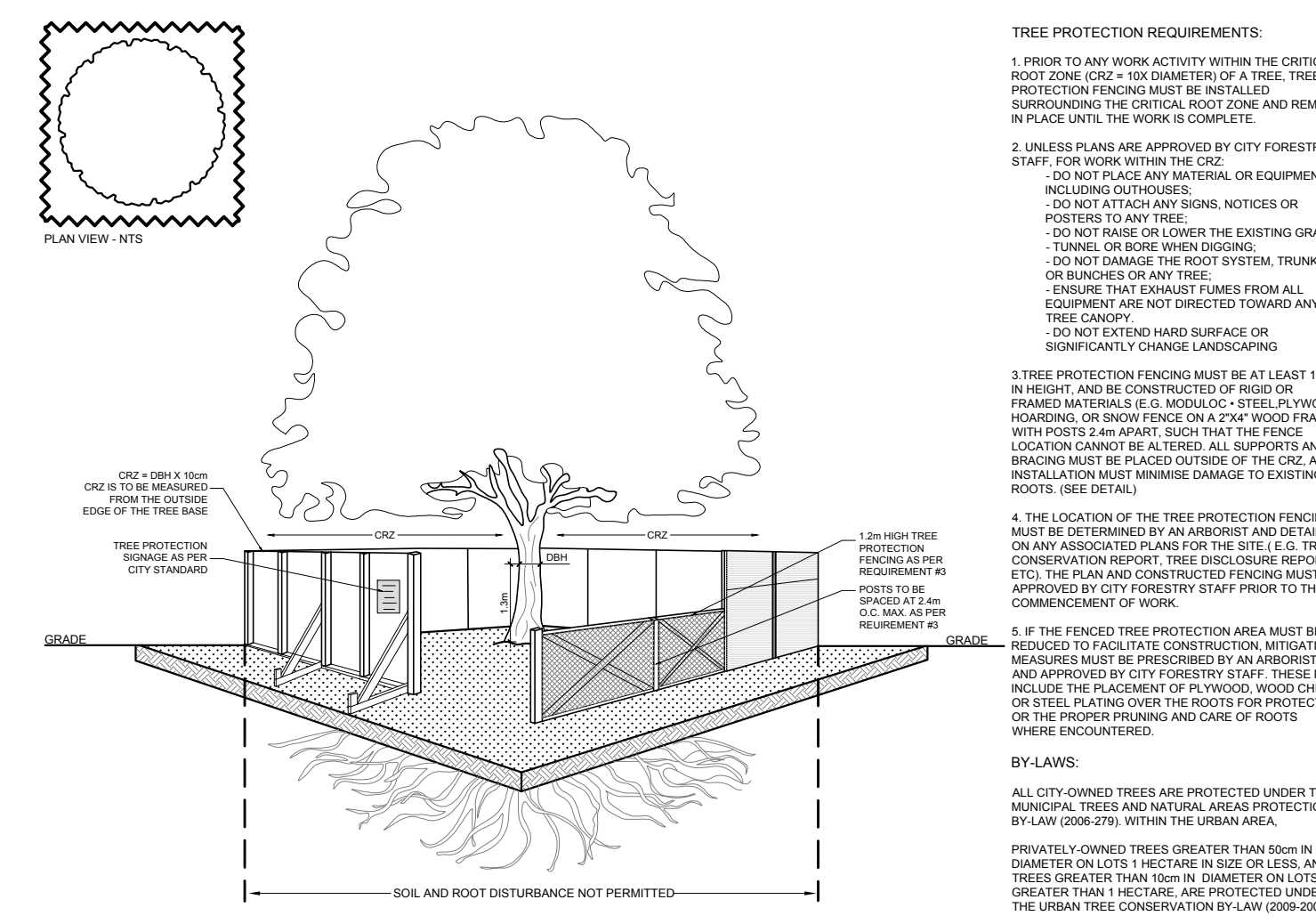
*NATIVE TO ONTARIO



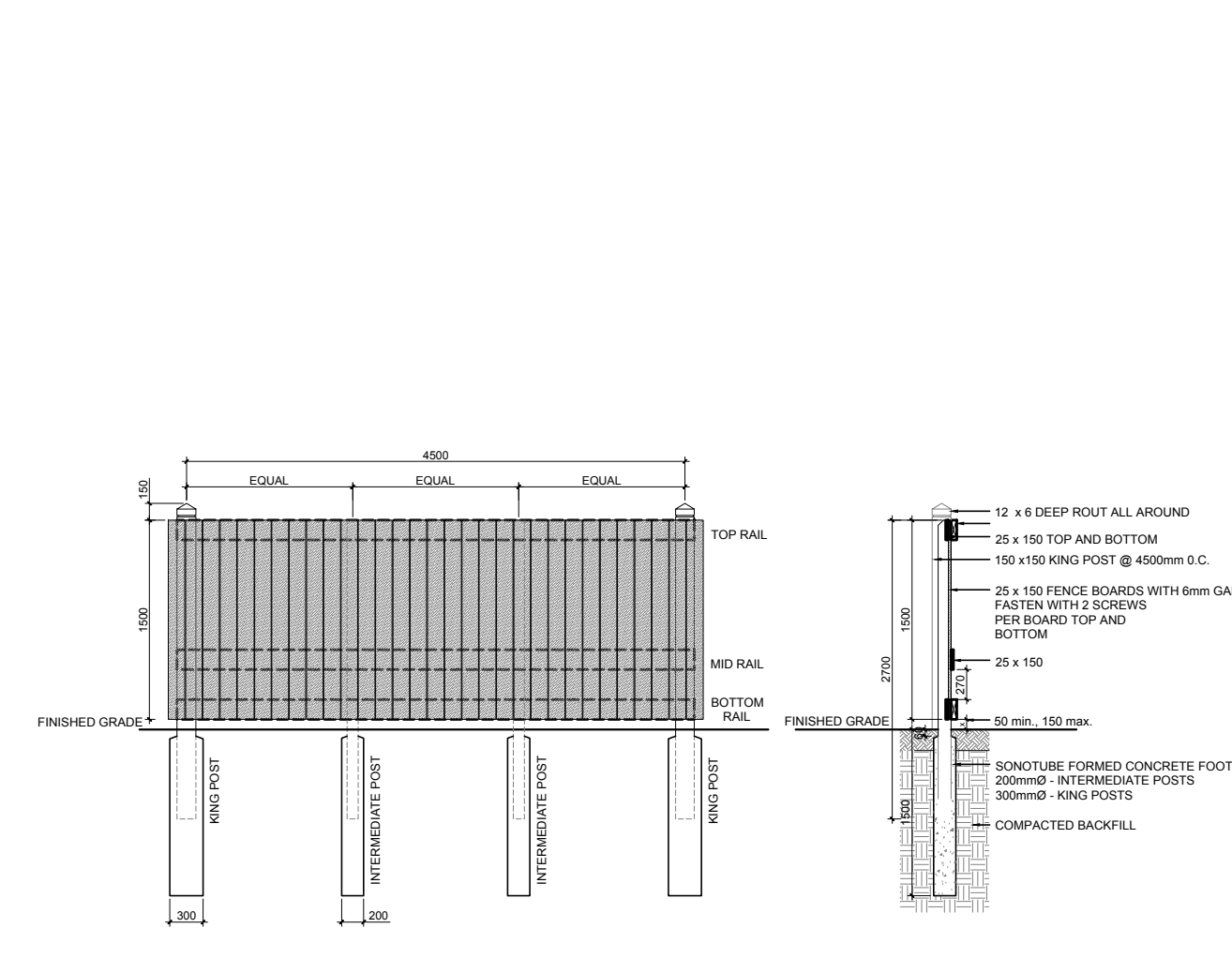
2 DECIDUOUS TREE PLANTING
SCALE: NTS



4 SHRUB / ORNAMENTAL GRASS PLANTING
SCALE: NTS



3 TREE PROTECTION FENCE
SCALE: NTS



5 PROPOSED 1.5m Ht. WOOD BOARD FENCE
SCALE: NTS

CLIENT
UPSCALE HOMES

CONSULTANTS
ARCHITECTS:

ARCHITECTURE + PLANNING

414 Churchill Avenue North
Ottawa, Ontario, K1Z 5C6
613-853-9822 rosaline@rjh.ca rjh.ca

CIVIL ENGINEERS:

T.L. Mak Engineering Consultants Ltd.
1455 Youville Drive, Suite 218
Ottawa, ON K1C 6Z7
Tel: 613-837-5516 | Fax: 613-837-5277
E-mail: timakec@bell.net.ca

SURVEYORS:

ANNIS, O'SULLIVAN, VOLLEBEKK LTD.
14 Concourse Gate, Suite 500
Nepean, Ont. K2E 7S6
Phone: (613) 727-2850 | Fax: (613) 727-1079
Email: annis@annis.com

LEGEND

- EXISTING TREE TO REMAIN
- EXISTING TREE TO BE REMOVED
- PROPOSED DECIDUOUS TREE
MINIMUM SOIL VOLUME: 20m3 FOR SMALL TREES, 30m3 FOR LARGE TREES AT A 1.5m DEPTH
- PROPOSED SHRUBS / ORNAMENTAL GRASSES
- PROPOSED SOD
- PROPOSED PEASTONE
- PROPOSED MULCH
- PROPOSED 1.5m Ht. WOOD BOARD FENCE
- PROPOSED TREE PROTECTION FENCE
- LIMIT OF CONSTRUCTION

No.	Issue	Date	DR	CK
5	REVISED PER CITY COMMENTS	09/17/2024	ML	JL
4	REVISED PER NEW CIVIL DRAWING	08/02/2024	ML	JL
3	REVISED PER NEW SITE PLAN	08/01/2024	ML	JL
2	MARKUP PER CLIENT'S COMMENTS	07/24/2024	ML	JL
1	ISSUED FOR DISCUSSION AND REVIEW	07/04/2024	ML	JL

JAMES B. LENNOX & ASSOCIATES INC.
LANDSCAPE ARCHITECTS
3332 CARLING AVE. OTTAWA, ONTARIO K2H 5A8
Tel: (613) 722-5168 Fax: (613) 722-5168

PROJECT
DONALD / EDITH APARTMENTS
304-308 DONALD STREET, OTTAWA ON

DRAWING
TREE CONSERVATION REPORT & LANDSCAPE PLAN

STAMP

SCALE
AS SHOWN

START DATE
APRIL 2024

PROJECT NO.
JULY 2024

PROJECT NORTH

DRAWING NO.
L.1

PLOT SIZE ARCH-D