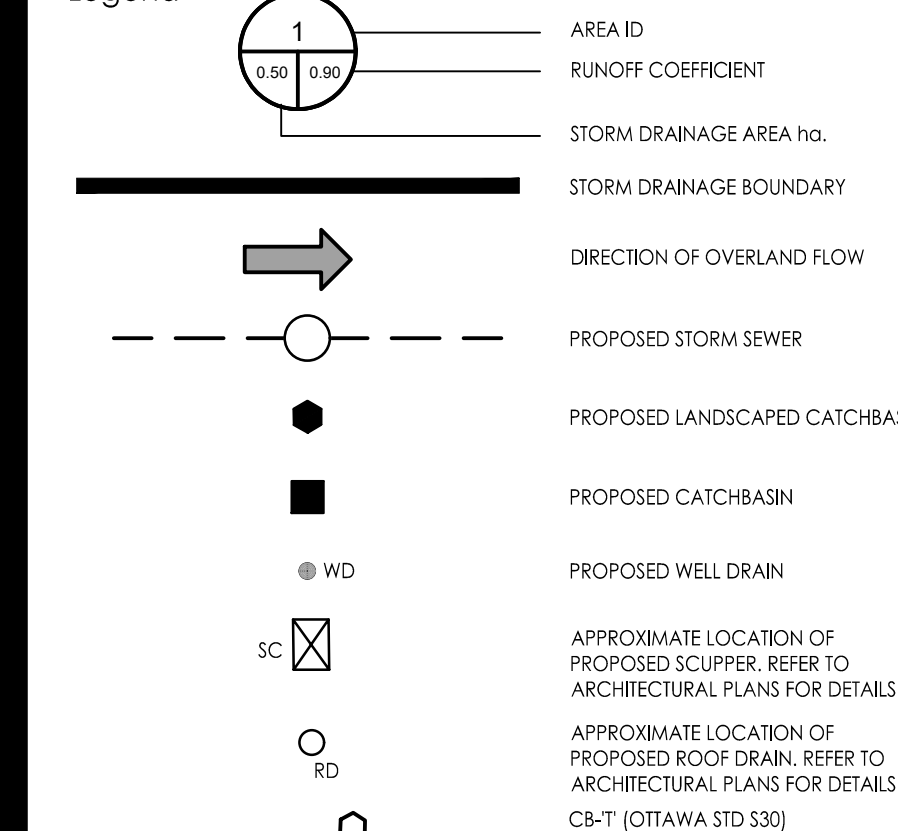


Copyright Reserved

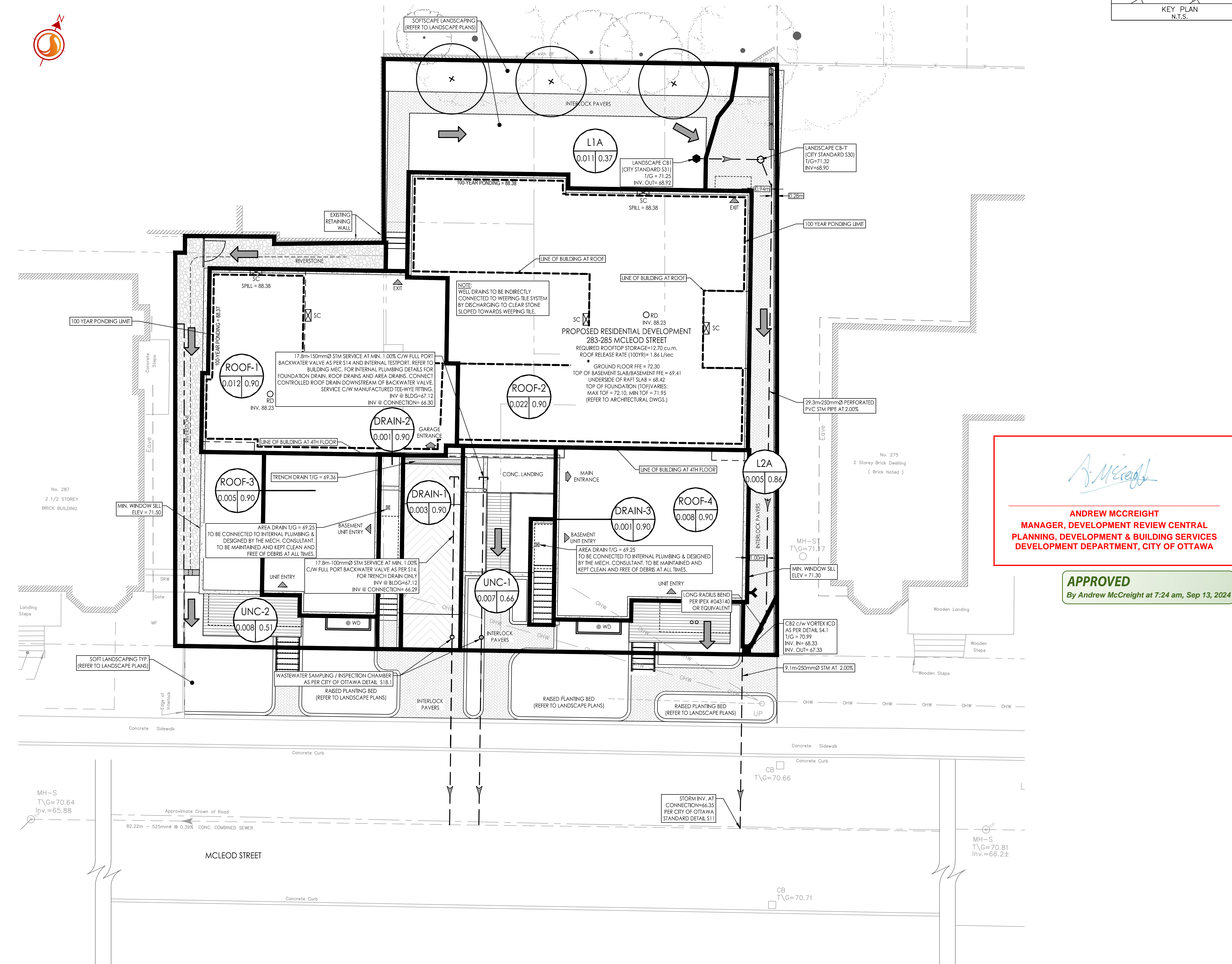
The Contractor shall verify and be responsible for all dimensions. DO NOT scale the drawing - any errors or omissions shall be reported to Stantec without delay.
The Copyrights to all designs and drawings are the property of Stantec. Reproduction or use for any purpose other than that authorized by Stantec is forbidden.

Legend



Notes

1. ROOF TO BE EQUIPPED WITH RESTRICTED RELEASE ROOF DRAINS FOR ROOFTOP STORAGE. SCUPPERS TO ALLOW EMERGENCY OVERFLOW OVER 6" (150mm) STORAGE DEPTH.



Andrew McCreight
ANDREW MCCREIGHT
MANAGER, DEVELOPMENT REVIEW CENTRAL
PLANNING, DEVELOPMENT & BUILDING SERVICES
DEVELOPMENT DEPARTMENT, CITY OF OTTAWA

APPROVED
By Andrew McCreight at 7:24 am, Sep 13, 2024

Revision	By	Appd.	YY.MM.DD
5	ZW	KS	24.08.19
4	JP	KS	24.06.18
3	JP	KS	24.05.17
2	AJT	KS	24.04.05
1	AJT	KS	24.01.22

File Name:	160401782-08.dwg	AJT	ALG	AJT	24.01.22
		Dwn.	Chkd.	Dgn.	YY.MM.DD

Permit-Seal

Client/Project
REZY PROPERTIES INC.

CENTRETOWN
283-285 MCLEOD STREET
OTTAWA, ON, CANADA

Title
STORM DRAINAGE PLAN

Project No. 160401782
Drawing No. SD-1
Scale 1:100
Sheet 6 of 7
Revision 3

SCHEDULE OF ROOF RELEASE RATES							
BUILDING	DRAIN TYPE	# DRAINS	SETTINGS	2YR Head (mm)	100YR Head (mm)	2YR RELEASE RATE (L/s)	100YR RELEASE RATE (L/s)
ROOF-1	WATTS ACCUTROL	1	25% OPEN	87	141	0.83	1.04
ROOF-2	WATTS ACCUTROL	1	25% OPEN	95	145	0.85	1.07