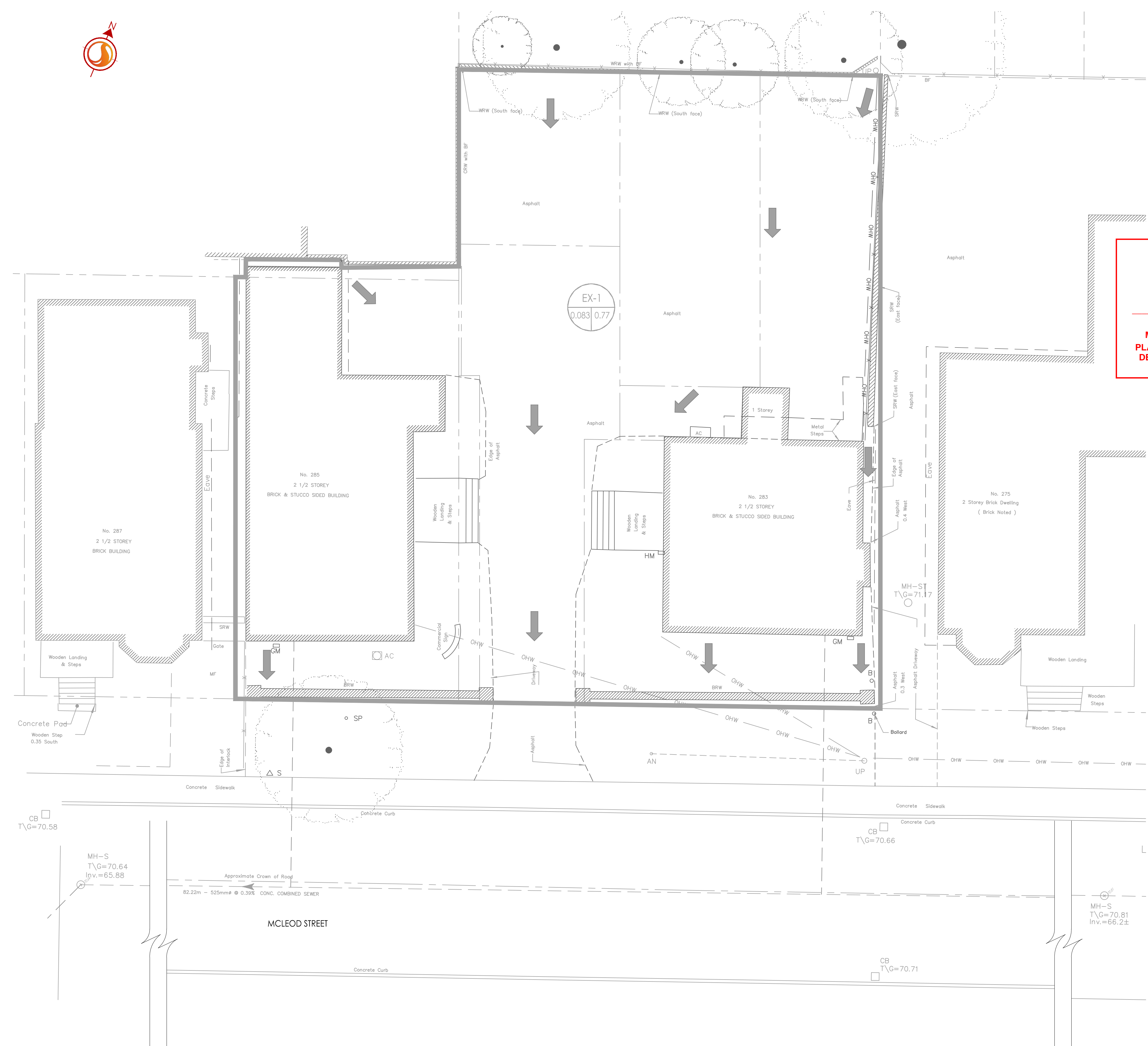
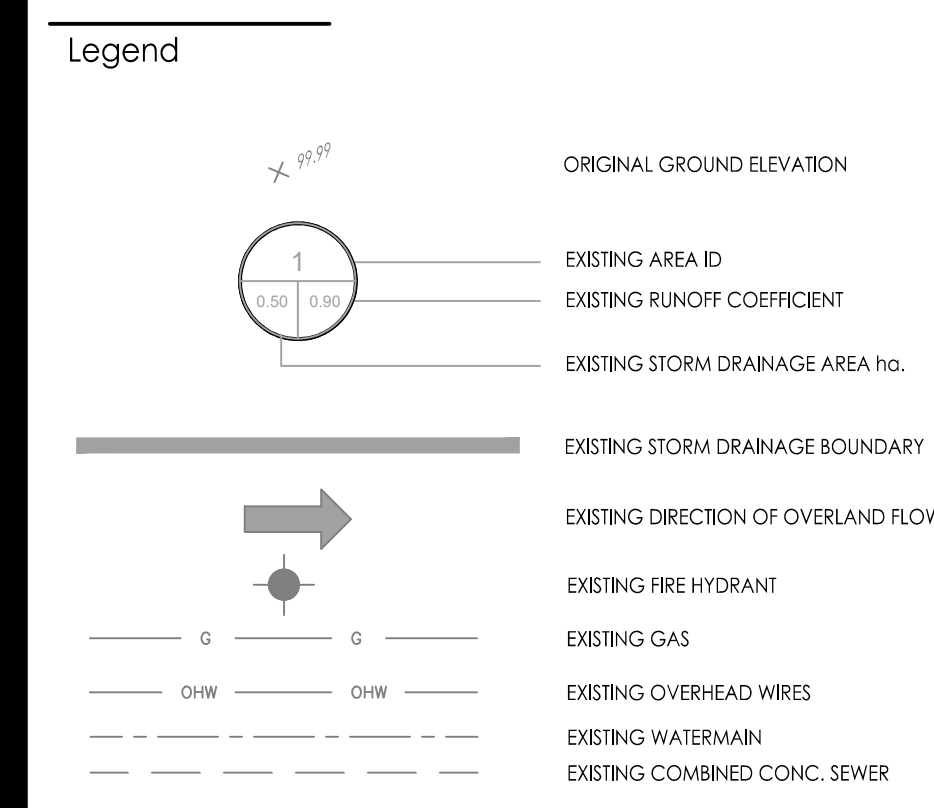




Stantec Consulting Ltd.
300 - 1331 Clyde Avenue
Ottawa ON
Tel. 613.722.4420
www.stantec.com

Copyright Reserved
The Contractor shall verify and be responsible for all dimensions. DO NOT scale the drawing - any errors or omissions shall be reported to Stantec without delay.
The Copyrights to all designs and drawings are the property of Stantec. Reproduction or use for any purpose other than that authorized by Stantec is forbidden.



Andrew McCreight
ANDREW MCCREIGHT
MANAGER, DEVELOPMENT REVIEW CENTRAL
PLANNING, DEVELOPMENT & BUILDING SERVICES
DEVELOPMENT DEPARTMENT, CITY OF OTTAWA

APPROVED
By Andrew McCreight at 7:24 am, Sep 13, 2024

Revision	By	Appd.	YY.MM.DD
5	ZW	KS	24.08.19
4	JP	KS	24.06.18
3	JP	KS	24.05.17
2	AJT	KS	24.04.05
1	AJT	KS	24.01.22

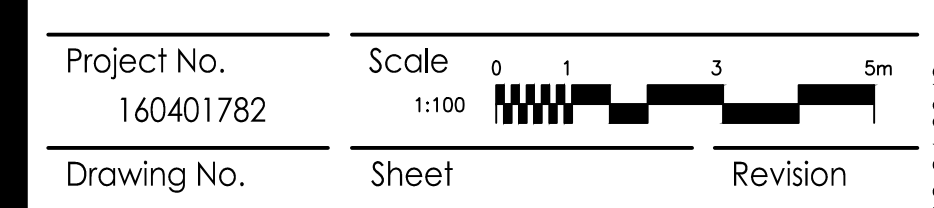
File Name:	160401782-08.dwg	AJT	ALG	AJT	24.01.22
		Dwn.	Chkd.	Dgn.	YY.MM.DD

Permit-Seal

Client/Project
REZY PROPERTIES INC.

CENTRETOWN
283-285 MCLEOD STREET
OTTAWA, ON, CANADA

Title
EXISTING STORM DRAINAGE PLAN



X:\Projects\160401782\Design\Drawings\160401782-08.dwg
 2024/09/13 10:52 AM by: CLARENCE WONG