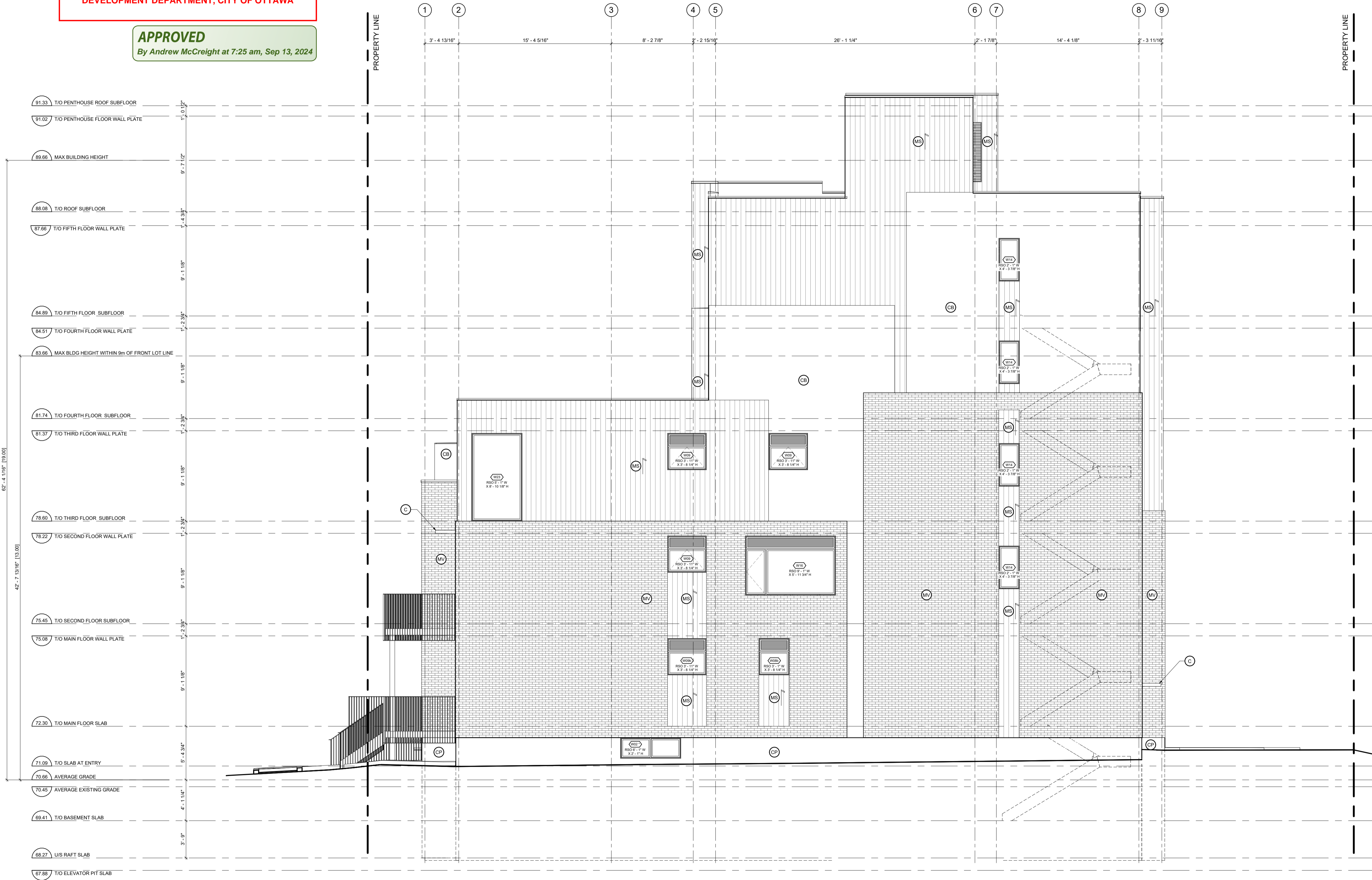


*Andrew McCreight*

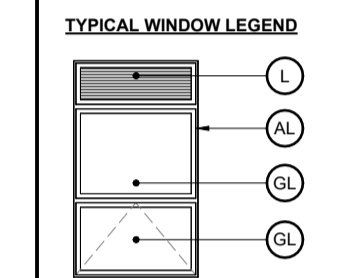
**ANDREW MCCREIGHT**  
 MANAGER, DEVELOPMENT REVIEW CENTRAL  
 PLANNING, DEVELOPMENT & BUILDING SERVICES  
 DEVELOPMENT DEPARTMENT, CITY OF OTTAWA

**APPROVED**  
 By Andrew McCreight at 7:25 am, Sep 13, 2024

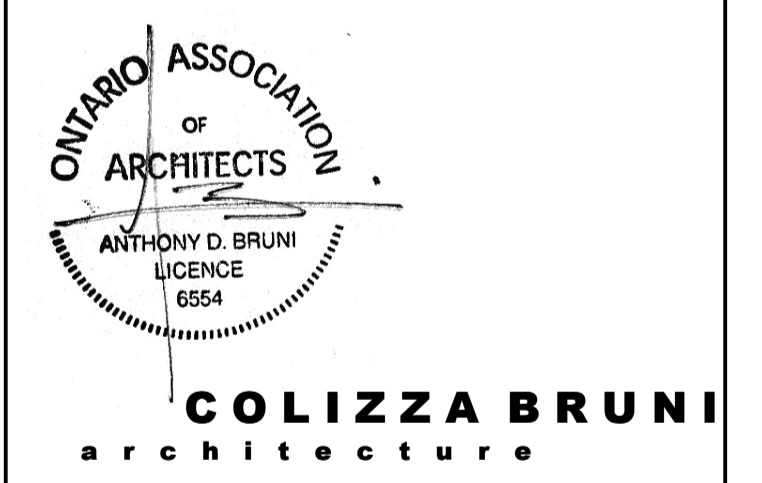


- 91.33 T/O PENTHOUSE ROOF SUBFLOOR
- 91.02 T/O PENTHOUSE FLOOR WALL PLATE
- 89.66 MAX BUILDING HEIGHT
- 88.00 T/O ROOF SUBFLOOR
- 87.66 T/O FIFTH FLOOR WALL PLATE
- 84.89 T/O FIFTH FLOOR SUBFLOOR
- 84.51 T/O FOURTH FLOOR WALL PLATE
- 83.66 MAX BLDG HEIGHT WITHIN 9m OF FRONT LOT LINE
- 81.74 T/O FOURTH FLOOR SUBFLOOR
- 81.37 T/O THIRD FLOOR WALL PLATE
- 78.60 T/O THIRD FLOOR SUBFLOOR
- 78.22 T/O SECOND FLOOR WALL PLATE
- 75.42 T/O SECOND FLOOR SUBFLOOR
- 75.06 T/O MAIN FLOOR WALL PLATE
- 72.30 T/O MAIN FLOOR SLAB
- 71.09 T/O SLAB AT ENTRY
- 70.88 AVERAGE GRADE
- 70.45 AVERAGE EXISTING GRADE
- 69.41 T/O BASEMENT SLAB
- 68.27 US RAFT SLAB
- 67.88 T/O ELEVATOR PIT SLAB

- GENERAL NOTES:**
- ADD 1" TO OVERALL DIMENSIONS FOR WINDOW & DOOR ROUGH STUD OPENINGS (R/O) UNLESS NOTED OTHERWISE
  - WINDOW & DOOR [COLOUR: BLACK EXTERIOR, WHITE INTERIOR]
  - SOFFITS TO BE PRE-FINISHED METAL VENTED. COLOUR: BLACK
  - INSTALL LIGHT AT EXTERIOR DOORS
  - ALL PRE-FINISHED METALS 4" OR LESS TO BE MIN. 26 GA. 4"-8" TO BE MIN. 24 GA. 8" OR GREATER TO BE MIN. 22 GA.
  - AN ASTERISK (\*) WITHIN WINDOW TAG DENOTES REQUIREMENT OF SPRINKLER-PROTECTED WINDOW SYSTEM IN ACCORDANCE WITH CANULC-S136:2021 AS PER CBC 3.1.4.15.
  - BIRD SAFE DESIGN MEASURES INCLUDE:
    - a. NO GLASS RAILINGS TO BE USED THROUGHOUT PROJECT
    - b. ALL VENTILATION LOUVRES, GRATES AND PIPES TO HAVE SCREENS SPECIFIED TO PREVENT ENTRY FROM BIRDS
    - c. REDUCTION OF TRANSPARENT REFLECTING MATERIALS
    - d. AVOIDING EXPANSES OF GLAZING
    - e. VARIOUS MATERIALITY
    - f. EXTERIOR LIGHTING DESIGN.
- MATERIALS LEGEND**
- MV - MASONRY VENEER [COLOUR: RED]
  - MS - METAL SIDING, VICWEST ADS300R SERIES, 22 GA [COLOUR: EBONY 9822, INSTALLED VERTICALLY]
  - CB - CEMENT BOARD BY KOL, EXPOSED FASTENER SYSTEM [COLOUR: TELEGREY 7038 SMOOTH]
  - CP - CEMENT PAVING
  - SR - SLOPED STEEL ROOFING [COLOUR: BLACK OR CHARCOAL GREY]
  - GL - INSULATED GLAZING UNITS
  - L - INTEGRATED PRE-FINISHED MECHANICAL LOUVRE [COLOUR: BLACK]
  - AL - PRE-FINISHED ANNOXOIZED ALUMINUM WINDOW FRAME [COLOUR: BLACK]
  - C - CANOPY



NO.	REV DATE	REV DESCRIPTION
01	24-01-23	ISSUED FOR SPC SUBMISSION
02	24-03-21	RE-ISSUED FOR SPC SUBMISSION
03	24-04-12	RE-ISSUED FOR SPC SUBMISSION
04	24-05-03	ISSUED FOR PERMIT SUBMISSION
05	24-05-10	RE-ISSUED FOR SPC SUBMISSION
06	24-07-31	ISSUED FOR PERMIT RESPONSE 1
07	24-08-01	ISSUED FOR PRELIMINARY TENDER
08	24-08-20	RE-ISSUED FOR SPC SUBMISSION
09	24-08-29	ISSUED FOR PERMIT RESPONSE 2
10	24-09-04	RE-ISSUED FOR SPC SUBMISSION



76 CHAMBERLAIN AVE • OTTAWA • ONTARIO • K1S 1V5  
 T 613.236.2944 • F 613.236.6777 • www.colizzabruni.com

PROJECT NAME  
**283 & 285 McLEOD STREET**

OTTAWA, ON

DRAWING TITLE  
**EAST ELEVATION**

SCALE  
 AS NOTED

DRAWN BY  
 BS

DATE  
 24/09/04

PROJECT NO.  
 01917

DRAWING NO.  
**A203**