

14.100  
**BASEMENT FLOOR**  
 1:100

UNIT MIX - BASEMENT	
Name	Count
18	2
28	1
STUDIO	16
Grand total	19

CLIENT  
**FORUM ASSET MANAGEMENT**  
 EAST PODIUM, 2ND FLOOR  
 181 BAY STREET  
 TORONTO, ON, M5J 2T3  
 T. 416-947-0389  
 WWW.forumam.com

ARCHITECTURE  
**lemay**  
 Lemay CO Inc  
 SUITE 401  
 60 ADELAIDE ST E  
 TORONTO, ON M5C 3E4  
 T. 647-254-3185  
 www.lemay.com

MECHANICAL & ELECTRICAL  
**Joint Sustainability**  
 110  
 333 Preston Street  
 Ottawa, ON K1S 5N4  
 T. 613-851-8800  
 www.dn-structural.ca  
 2nd Floor  
 7405 East Danube Crescent  
 Mississauga, ON L5N 6P6  
 T. 905-285-9900  
 www.jscconstr.com

LANDSCAPE  
**Lemay**  
 300  
 2011 Queensview Drive  
 Ottawa, ON K2B 9C2  
 T. 613-629-3800  
 www.wspgroup.com

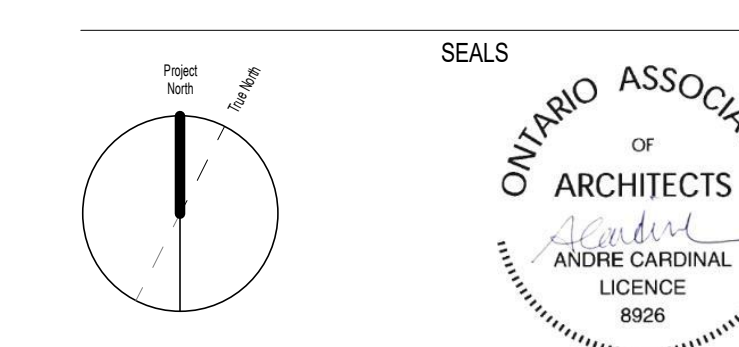
SURVEYOR  
**Aanis, O'Sullivan, Vollebæk Ltd.**  
 Suite 500  
 14 Concourse Gate  
 Nepean, ON K2E 7S8  
 T. 613-727-2660  
 www.aosvl.com

- NOTES
1. CONTRACTOR TO CHECK AND VERIFY ALL DIMENSIONS PRIOR TO COMMENCING WORK.
  2. CONTRACTOR TO COMPLY WITH ALL BUILDING CODES, REGULATIONS AND ORDINANCES OF AUTHORITIES HAVING JURISDICTION.
  3. THIS DRAWING IS NOT TO BE USED FOR CONSTRUCTION UNLESS STAMPED ISSUED FOR CONSTRUCTION BY LEMAY ARCHITECTURE AND DESIGN LTD.
  4. DO NOT SCALE DRAWING.
  5. THIS DRAWING MAY NOT BE COPIED, ALTERED, OR DISTRIBUTED IN WHOLE OR IN PART WITHOUT WRITTEN PERMISSION. COPYRIGHT © LEMAY ARCHITECTURE AND DESIGN LTD.
  6. REPORT ANY ERRORS AND OMISSIONS TO THE CONSULTANT IMMEDIATELY BEFORE COMMENCING WORK.
  7. DEVIATIONS FROM THE CONTRACT DOCUMENTS WITHOUT WRITTEN APPROVAL FROM CONSULTANT ARE SUBJECT TO CORRECTIONS AT CONTRACTOR EXPENSE.
  8. DIMENSIONS ARE IN METRIC (MM) UNLESS NOTED OTHERWISE.

ISSUE

#	DATE	ISSUED FOR SPA RESUBMISSION	DESCRIPTION
1	2024-09-06	ISSUED FOR SPA RESUBMISSION	

NOT FOR CONSTRUCTION



PROJECT NUMBER & PROJECT NAME  
 24-0353 - 15(17) OBLATS AVENUE, OTTAWA

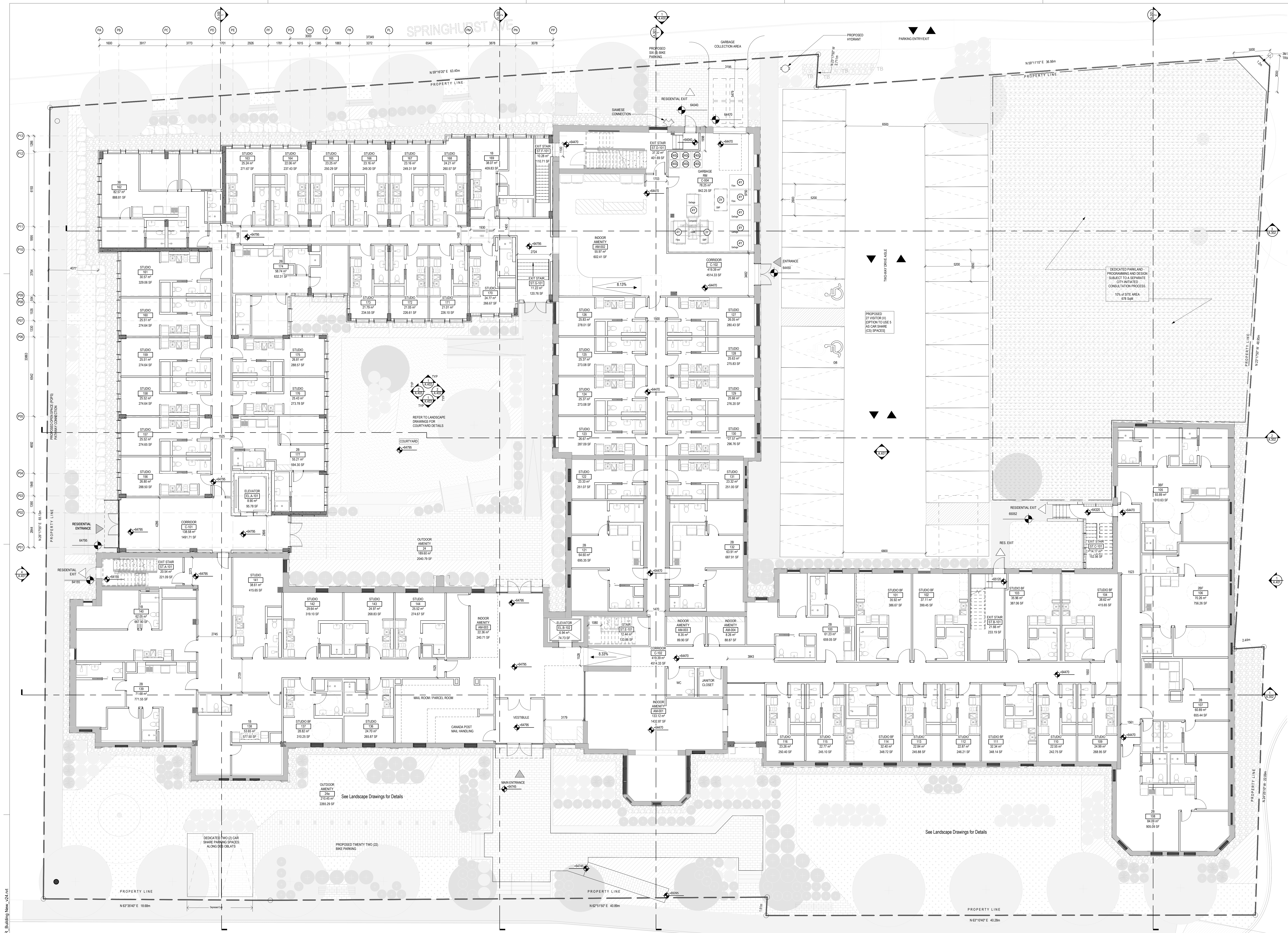
SHEET NAME  
**BASEMENT PLAN**

DATE / TIME STAMP  
 9/6/2024 2:16:54 PM

APPROVED BY  
 AC  
 CHECKED BY  
 PK  
 DRAWN BY  
 CH / VT  
 SCALE  
 1:100

SHEET NUMBER  
**A.100**





CLIENT  
**FORUM ASSET MANAGEMENT**  
 EAST PODIUM, 2ND FLOOR  
 181 BAY STREET  
 TORONTO, ON, M5J 2T3  
 T. 416-947-0389  
 WWW.FORUM.COM

ARCHITECTURE  
**lemay**  
 Lemay CO Inc  
 SUITE 401  
 65 ADELAIDE ST E  
 TORONTO, ON M5C 3E4  
 T. 647-254-3185  
 WWW.LEMAY.COM

MECHANICAL & ELECTRICAL  
 JAIN SUSTAINABILITY  
 2nd Floor  
 7405 East Danforth Crescent  
 MISSISSAUGA, ON L4N 0P6  
 T. 905-285-9900  
 WWW.JAINSTRUCTURAL.COM

STRUCTURAL  
**DJM Structural Engineering**  
 110  
 333 Preston Street  
 Ottawa, ON K1S 5N4  
 T. 613-851-8840  
 WWW.DJM-STRUCTURAL.CA  
 T. 905-285-9900  
 WWW.JAINSTRUCTURAL.COM

LANDSCAPE  
**Lemay**  
 300  
 2011 Queenstown Drive  
 Ottawa, ON K2B 9C2  
 T. 514-632-5101  
 WWW.LEMAY.COM  
 T. 613-629-2800  
 WWW.WSPGROUP.COM

SURVEYOR  
**Aanis, O'Sullivan, Vollebæk Ltd.**  
 Suite 500  
 14 Concourse Gate  
 Nepean, ON K2E 7S8  
 T. 613-727-2850  
 WWW.AOVL.COM

NOTES

1. CONTRACTOR TO CHECK AND VERIFY ALL DIMENSIONS PRIOR TO COMMENCING WORK.
2. CONTRACTOR TO COMPLY WITH ALL BUILDING CODES, REGULATIONS, AND ORDINANCES OF AUTHORITIES HAVING JURISDICTION.
3. THIS DRAWING IS NOT TO BE USED FOR CONSTRUCTION UNLESS STAMPED AND ISSUED FOR CONSTRUCTION BY LEMAY ARCHITECTURE AND DESIGN LTD.
4. DO NOT SCALE DRAWING.
5. THIS DRAWING MAY NOT BE COPIED, ALTERED, OR DISTRIBUTED IN WHOLE OR IN PART WITHOUT WRITTEN PERMISSION. COPYRIGHT © LEMAY ARCHITECTURE AND DESIGN LTD.
6. REPORT ANY ERRORS AND OMISSIONS TO THE CONSULTANT IMMEDIATELY BEFORE COMMENCING WORK.
7. DEVIATIONS FROM THE CONTRACT DOCUMENTS WITHOUT WRITTEN APPROVAL FROM CONSULTANT ARE SUBJECT TO CORRECTIONS AT CONTRACTOR EXPENSE.
8. DIMENSIONS ARE IN METRIC (MM) UNLESS NOTED OTHERWISE.

DEDICATED PARKING - PROGRAMMING AND DESIGN SUBJECT TO SEPARATE CITY-INITIATED CONSULTATION PROCESS. 10% OF SITE AREA 678 SQM.

PROPOSED (P) VISITOR (V) IN ADDITION TO USE AS ALL GARAGE (GS) SPACES.

REFER TO LANDSCAPE DRAWINGS FOR COURTYARD DETAILS.

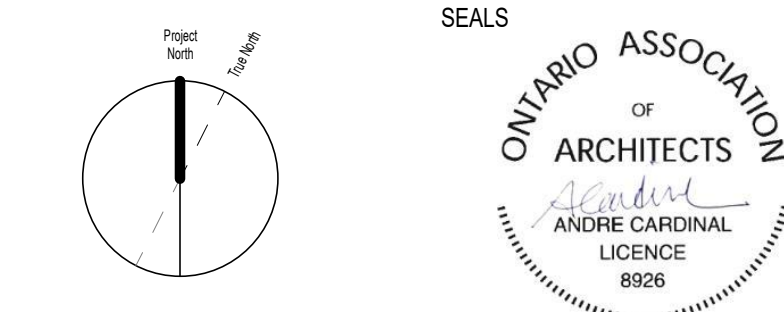
See Landscape Drawings for Details

See Landscape Drawings for Details

ISSUE	DATE	ISSUED FOR SPA RESUBMISSION	DESCRIPTION
1	2024-09-06	ISSUED FOR SPA RESUBMISSION	

UNIT NO.	FLOOR	COUNT
10	3	3
20	6	6
30	1	1
40	1	1
50	1	1
60	1	1
70	1	1
80	1	1
90	1	1
100	1	1
110	1	1
120	1	1
130	1	1
140	1	1
150	1	1
160	1	1
170	1	1
180	1	1
190	1	1
200	1	1
210	1	1
220	1	1
230	1	1
240	1	1
250	1	1
260	1	1
270	1	1
280	1	1
290	1	1
300	1	1
310	1	1
320	1	1
330	1	1
340	1	1
350	1	1
360	1	1
370	1	1
380	1	1
390	1	1
400	1	1
410	1	1
420	1	1
430	1	1
440	1	1
450	1	1
460	1	1
470	1	1
480	1	1
490	1	1
500	1	1
510	1	1
520	1	1
530	1	1
540	1	1
550	1	1
560	1	1
570	1	1
580	1	1
590	1	1
600	1	1
610	1	1
620	1	1
630	1	1
640	1	1
650	1	1
660	1	1
670	1	1
680	1	1
690	1	1
700	1	1
710	1	1
720	1	1
730	1	1
740	1	1
750	1	1
760	1	1
770	1	1
780	1	1
790	1	1
800	1	1
810	1	1
820	1	1
830	1	1
840	1	1
850	1	1
860	1	1
870	1	1
880	1	1
890	1	1
900	1	1
910	1	1
920	1	1
930	1	1
940	1	1
950	1	1
960	1	1
970	1	1
980	1	1
990	1	1
1000	1	1

NOT FOR CONSTRUCTION



PROJECT NUMBER & PROJECT NAME  
 24-0353 - 15(17) OBLATS AVENUE, OTTAWA

SHEET NAME  
 GROUND FLOOR PLAN

APPROVED BY  
 AC  
 CHECKED BY  
 PM  
 DRAWN BY  
 CH / VT  
 SCALE  
 1:100

DATE / TIME STAMP  
 9/6/2024 2:30:23 PM

SHEET NUMBER  
 A.101

UNIT NO.	FLOOR	COUNT
10	3	3
20	6	6
30	1	1
40	1	1
50	1	1
60	1	1
70	1	1
80	1	1
90	1	1
100	1	1
110	1	1
120	1	1
130	1	1
140	1	1
150	1	1
160	1	1
170	1	1
180	1	1
190	1	1
200	1	1
210	1	1
220	1	1
230	1	1
240	1	1
250	1	1
260	1	1
270	1	1
280	1	1
290	1	1
300	1	1
310	1	1
320	1	1
330	1	1
340	1	1
350	1	1
360	1	1
370	1	1
380	1	1
390	1	1
400	1	1
410	1	1
420	1	1
430	1	1
440	1	1
450	1	1
460	1	1
470	1	1
480	1	1
490	1	1
500	1	1
510	1	1
520	1	1
530	1	1
540	1	1
550	1	1
560	1	1
570	1	1
580	1	1
590	1	1
600	1	1
610	1	1
620	1	1
630	1	1
640	1	1
650	1	1
660	1	1
670	1	1
680	1	1
690	1	1
700	1	1
710	1	1
720	1	1
730	1	1
740	1	1
750	1	1
760	1	1
770	1	1
780	1	1
790	1	1
800	1	1
810	1	1
820	1	1
830	1	1
840	1	1
850	1	1
860	1	1
870	1	1
880	1	1
890	1	1
900	1	1
910	1	1
920	1	1
930	1	1
940	1	1
950	1	1
960	1	1
970	1	1
980	1	1
990	1	1
1000	1	1

File Path: Autodesk Docs\724.0353\_15-17 Des Oblats Ottawa\24.0353\_Oblats\_AR\_Building-New\_024.rvt

SHEET SIZE - ARCH E (914.4X1219.2mm) (36X48")

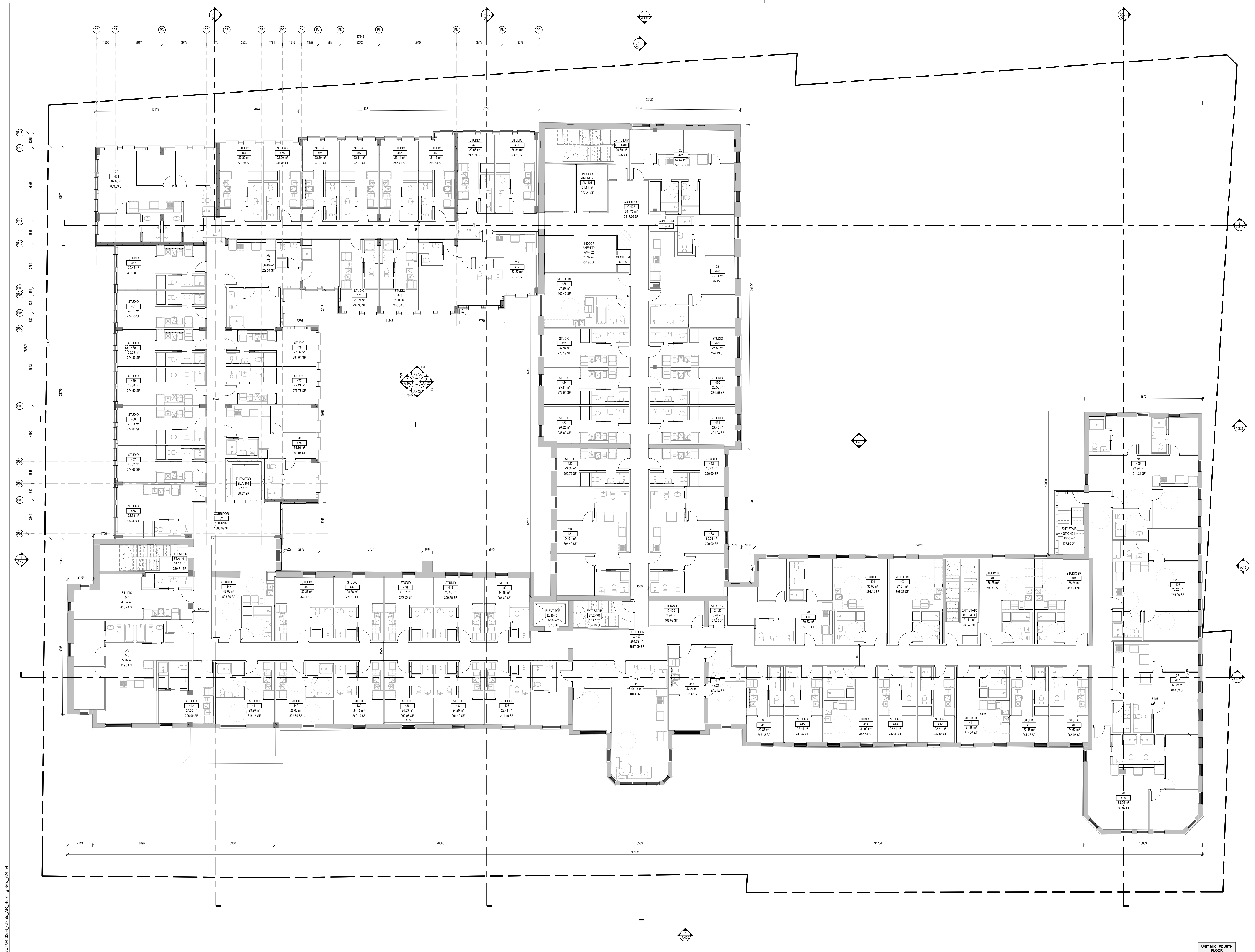












CLIENT  
**FORUM ASSET MANAGEMENT**  
 EAST POOL, 2ND FLOOR  
 181 BAY STREET  
 TORONTO, ON, M5J 2T3  
 T. 416-947-0389  
 WWW.FORUMAM.COM

ARCHITECTURE  
**lemay**  
 Lemay CO Inc  
 SUITE 401  
 60 ADELAIDE ST E  
 TORONTO, ON M5C 3E4  
 T. 647-254-3185  
 WWW.LEMAY.COM

MECHANICAL & ELECTRICAL  
**Jain Sustainability**  
 2nd Floor  
 7405 East Danforth Crescent  
 Mississauga, ON L4N 0P6  
 T. 905-285-9900  
 WWW.JAINSTRUCTURAL.COM

STRUCTURAL  
**DJM Structural Engineering**  
 110  
 333 Preston Street  
 Ottawa, ON K1S 5N4  
 T. 613-851-2660  
 WWW.DJMSTRUCTURAL.CA

LANDSCAPE  
**Lemay**  
 300  
 2611 Queenville Drive  
 Ottawa, ON K2B 9C2  
 T. 613-829-2800  
 WWW.WSPGROUP.COM

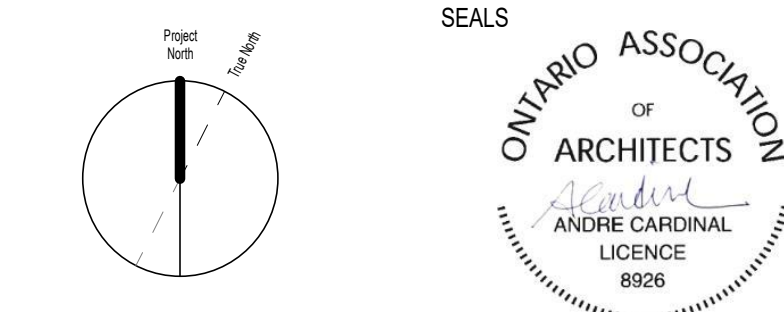
LANDSCAPE  
**CVIL**  
 300  
 2611 Queenville Drive  
 Ottawa, ON K2B 9C2  
 T. 613-829-2800  
 WWW.WSPGROUP.COM

SURVEYOR  
**Aanis, O'Sullivan, Volebak Ltd.**  
 Suite 500  
 14 Concourse Gate  
 Nepean, ON K2E 7S8  
 T. 613-727-2660  
 WWW.AOVL.COM

- NOTES
1. CONTRACTOR TO CHECK AND VERIFY ALL DIMENSIONS PRIOR TO COMMENCING WORK.
  2. CONTRACTOR TO COMPLY WITH ALL BUILDING CODES, REGULATIONS, AND ORDINANCES OF AUTHORITIES HAVING JURISDICTION.
  3. THIS DRAWING IS NOT TO BE USED FOR CONSTRUCTION UNLESS STAMPED ISSUED FOR CONSTRUCTION BY LEMAY ARCHITECTURE AND DESIGN LTD.
  4. DO NOT SCALE DRAWING.
  5. THIS DRAWING MAY NOT BE COPIED, ALTERED, OR DISTRIBUTED IN WHOLE OR IN PART WITHOUT WRITTEN PERMISSION. COPYRIGHT © LEMAY ARCHITECTURE AND DESIGN LTD.
  6. REPORT ANY ERRORS AND OMISSIONS TO THE CONSULTANT IMMEDIATELY BEFORE COMMENCING WORK.
  7. DEVIATIONS FROM THE CONTRACT DOCUMENTS WITHOUT WRITTEN APPROVAL FROM CONSULTANT ARE SUBJECT TO CORRECTIONS AT CONTRACTOR EXPENSE.
  8. DIMENSIONS ARE IN METRIC (MM) UNLESS NOTED OTHERWISE.

ISSUE	DATE	DESCRIPTION
1	2024-09-06	ISSUED FOR SPA RESUBMISSION
#	DATE	DESCRIPTION

NOT FOR CONSTRUCTION



PROJECT NUMBER & PROJECT NAME  
 24-0353 - 15(17) OBLATS AVENUE, OTTAWA

SHEET NAME  
 FOURTH ROOF PLAN

APPROVED BY  
 AC  
 CHECKED BY  
 PM  
 DRAWN BY  
 CH / VT  
 SCALE  
 1:100

DATE / TIME STAMP  
 9/6/2024 2:17:15 PM

SHEET NUMBER  
 A.104

UNIT MIX - FOURTH FLOOR

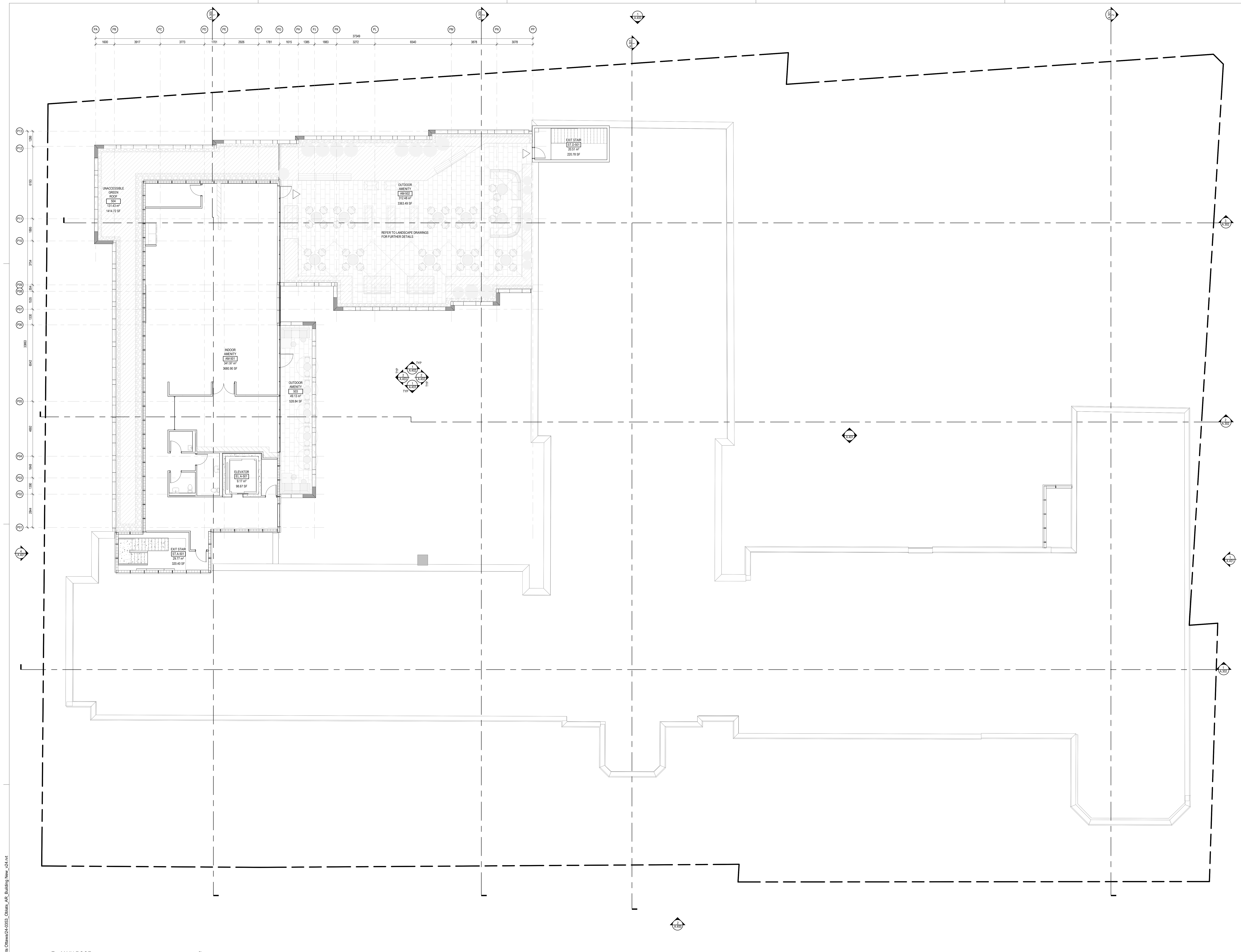
Name	Count
15F	1
2B	11
2B	2
2B	2
STUDIO	45
STUDIO	8
ST	1
Grand total	89

File Path: \\ubeltek\docs\24\0353\_15-17 Oblas Ottawa\24\0353\_Oblas\_AR\_Building\_Plan\_04.rvt

FOURTH FLOOR  
 1:100

SHEET SIZE - ARCH E (914.4X1219.2mm) (36X48)





CLIENT  
FORUM ASSET MANAGEMENT  
EAST PODIUM, 2ND FLOOR  
181 BAY STREET  
TORONTO, ON, M5J 2T3  
T. 416-947-0389  
WWW.FORUM.COM

ARCHITECTURE  
**lemay**  
Lemay CO Inc  
SUITE 401  
60 ADELAIDE ST E  
TORONTO, ON M5C 3E4  
T. 647-254-3185  
WWW.LEMAY.COM

MECHANICAL & ELECTRICAL  
Jain Sustainability  
2nd Floor  
7405 East Danforth Crescent  
Mississauga, ON L5N 6P6  
T. 905-285-9900  
WWW.JAINCONSULTANTS.COM

STRUCTURAL  
D+M Structural Engineering  
110  
333 Preston Street  
Ottawa, ON K1S 3N4  
T. 613-281-8860  
WWW.DM-STRUCTURAL.CA

LANDSCAPE  
Lemay  
Sarr-Jacques Street  
Montreal, QC, H4C 1H2  
T. 514-432-5101  
WWW.LEMAY.COM

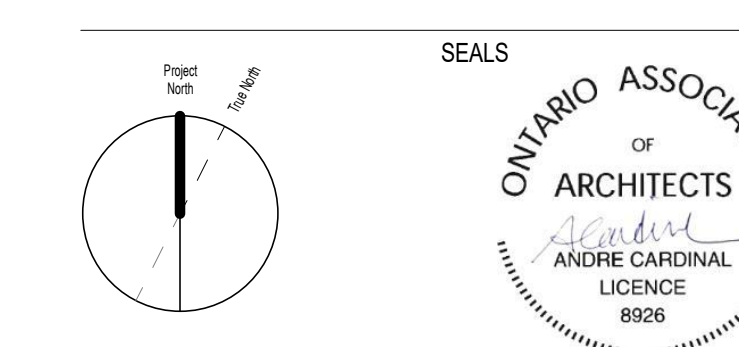
CIVIL  
WSP  
300  
2011 Queenville Drive  
Ottawa, ON K2B 9K2  
T. 613-629-2800  
WWW.WSPGROUP.COM

SURVEYOR  
Arens, O'Sullivan, Vollebæk Ltd.  
Suite 500  
14 Concourse Gate  
Nepean, ON, K2E 7S8  
T. 613-727-2850  
WWW.AOSL.COM

- NOTES
1. CONTRACTOR TO CHECK AND VERIFY ALL DIMENSIONS PRIOR TO COMMENCING WORK.
  2. CONTRACTOR TO COMPLY WITH ALL BUILDING CODES, REGULATIONS, AND ORDINANCES OF AUTHORITIES HAVING JURISDICTION.
  3. THIS DRAWING IS NOT TO BE USED FOR CONSTRUCTION UNLESS STAMPED AND ISSUED FOR CONSTRUCTION BY LEMAY ARCHITECTURE AND DESIGN LTD.
  4. DO NOT SCALE DRAWING.
  5. THIS DRAWING MAY NOT BE COPIED, ALTERED, OR DISTRIBUTED IN WHOLE OR IN PART WITHOUT WRITTEN PERMISSION. COPYRIGHT © LEMAY ARCHITECTURE AND DESIGN LTD.
  6. REPORT ANY ERRORS AND OMISSIONS TO THE CONSULTANT IMMEDIATELY BEFORE COMMENCING WORK.
  7. DEVIATIONS FROM THE CONTRACT DOCUMENTS WITHOUT WRITTEN APPROVAL FROM CONSULTANT ARE SUBJECT TO CORRECTIONS AT CONTRACTOR EXPENSE.
  8. DIMENSIONS ARE IN METRIC (MM) UNLESS NOTED OTHERWISE.

ISSUE #	DATE	DESCRIPTION
1	2024-09-06	ISSUED FOR SPA RESUBMISSION

NOT FOR CONSTRUCTION



PROJECT NUMBER & PROJECT NAME  
24-0353 - 15(17) OBLATS AVENUE, OTTAWA

SHEET NAME  
AMENITY FLOOR PLAN

DATE / TIME STAMP  
9/6/2024 2:30:35 PM

APPROVED BY  
AC  
CHECKED BY  
PK  
DRAWN BY  
CH / VT  
SCALE  
1:100

SHEET NUMBER  
A.105

File Path: \\subdesk\Draws\24\0353\_15-17 Oblats Ottawa\24\0353\_Oblats\_AR\_Building-New\_024.rvt



