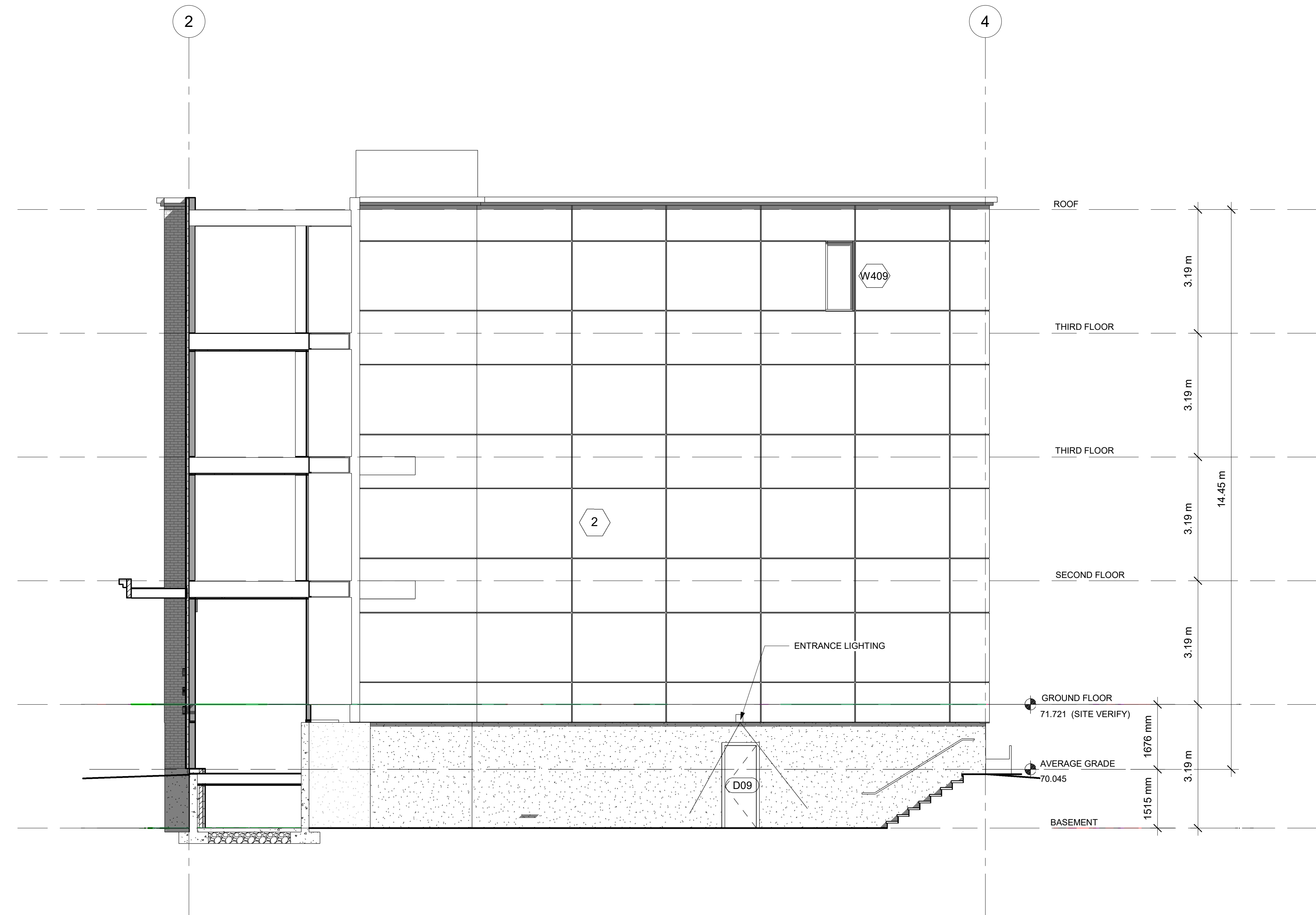


- MATERIAL LEGEND & NOTES**
- 1 BRICK VENEER
  - 2 CEMENT BOARD



1 Side (West) Elevation  
3/16" = 1'-0"

**RESPONSIBILITIES:**  
DO NOT SCALE DRAWINGS  
ALL DESIGN AND CONSTRUCTION TO BE IN ACCORDANCE WITH THE ONTARIO BUILDING CODE 2012  
ALL CONTRACTORS MUST WORK IN ACCORDANCE WITH ALL LAWS, REGULATIONS AND BYLAWS HAVING JURISDICTION  
IT IS THE RESPONSIBILITY OF THE APPROPRIATE CONTRACTOR TO CHECK AND VERIFY ALL DIMENSIONS ON SITE AND REPORT ALL ERRORS AND OMISSIONS TO THE ARCHITECT DESIGNER  
THIS DRAWING MAY NOT BE USED FOR CONSTRUCTION UNLESS SIGNED BY THE ARCHITECT  
COPYRIGHT RESERVED



**280 LAURIER AVE. E.**  
NEW 4 STOREY ADDITION TO  
EXISTING 6 STOREY BUILDING

**OWNER:**  
280 LAURIER AVE EAST HOLDINGS INC.  
226 ARGYLE AVE.  
OTTAWA, ON, K2P 1B9

**DEVELOPER:**  
SMART LIVING PROPERTIES  
226 ARGYLE AVE.  
OTTAWA, ON, K2P 1B9

**ARCHITECT:**  
REDLINE ARCHITECTURE INC.

**CIVIL ENGINEER:**  
J.L. RICHARDS & ASSOCIATES LIMITED  
TOWER B, 343 PRESTON ST.  
SUITE 1000  
OTTAWA, ON, K1S 1M4

**LANDSCAPING:**  
JAMES B. LENNOX & ASSOCIATES INC.  
3352 CARLING AVE.  
OTTAWA, ON, K2H 5A9

**SURVEYOR:**  
ACU LTD.  
14 CONNORS GATE, SUITE 500  
OTTAWA, ON, K2E 7S8

**STRUCTURAL ENGINEER:**  
D&H STRUCTURAL LTD.  
333 PRESTON ST SUITE 110,  
OTTAWA, ON K1S 5M4

**MECHANICAL & ELECTRICAL ENGINEER:**  
JAN CONSULTANTS  
7465 EAST DANFORD CRESCENT  
MISSISSAUGA, ON,  
L5N 6P8

NO.	REVISION/ISSUE	DATE
9		
8		
7		
6		
5		
4		
3		
2	ISSUED FOR REVISION	02/23/24
1	ISSUED FOR SPA	08/11/23

PROJECT:  
**280 LAURIER AVE. E.**  
NEW ADDITION TO  
EXISTING 6 STOREY BUILDING  
280 LAURIER AVE. E.  
OTTAWA, ON K1N 6P7

WEST ELEVATION

DRAWN BY: SHEET:  
DATE: MARCH 21, 2021  
SCALE: AS NOTED

**A10**