

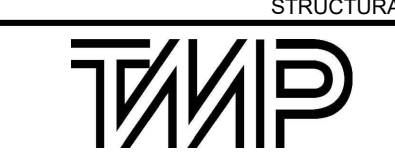


**BRISBIN  
BROOK  
BEYON**  
ARCHITECTS

14 DUNCAN ST 4TH FLOOR  
TORONTO, ON M5H 3G8  
(416) 591-8999

**ENTUITIVE**

135 LAURIER AVE WEST, SUITE 413  
OTTAWA, ON K1P 5J2  
(343) 308-9274



200 KING ST. WEST, SUITE 310  
TORONTO, ON M5H 3T4  
(416) 499-8000

MECH. PLUMB. FIRE PROTECTION ENGINEER

**MULVEY & BANANI**

90 SHEPPARD AVE EAST, SUITE 500  
TORONTO, ON M2N 3A  
(416) 751-2520

ELEC. LIGHTING ENGINEER

**S2O**

530 N. WOOD STREET #C  
CHICAGO, IL 60622  
(224) 717-1999

FOOD AND BEVERAGE

Landscape Architecture  
Urban Design  
Site Planning  
Recreation and Park Planning  
Project Management

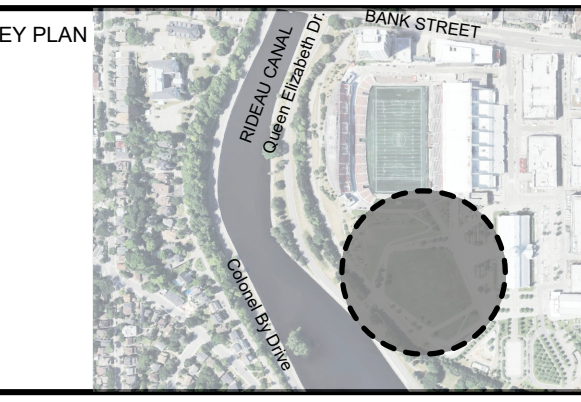
**CSW**  
319 McRae Avenue, Suite 502, Ottawa, Ontario, K1Z 0B9  
Tel: (613) 729-4536

LANDSCAPE ARCHITECT

3	ISSUED FOR CITY SPA COMMENTS	05 SEP 2024
2	ISSUED FOR SPA	07 AUG 2024
1	ISSUED FOR PRE-CONSULTATION	31 MAY 2024
NO.	DESCRIPTION	DATE

**REVISIONS/ ISSUES**

CONTRACTOR SHALL CHECK AND VERIFY ALL DIMENSIONS AND REPORT ANY OMISSIONS OR DISCREPANCIES TO THE ARCHITECT BEFORE PROCEEDING WITH THE WORK. **DO NOT SCALE THE DRAWINGS**



DRAWN SE/JA  
DATE MAY 2024  
CHECKED JC/CM

**LANSDOWNE  
EVENT CENTRE**

945 & 1015 Bank Street

Legal Description: Plan # 4R-46535

DWG. TITLE

**TREE CONSERVATION REPORT  
EXISTING CONDITION**

SCALE

1 : 400

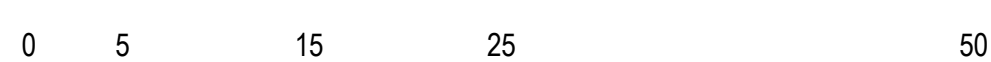
DWG. NO.

**TCR 1.0**

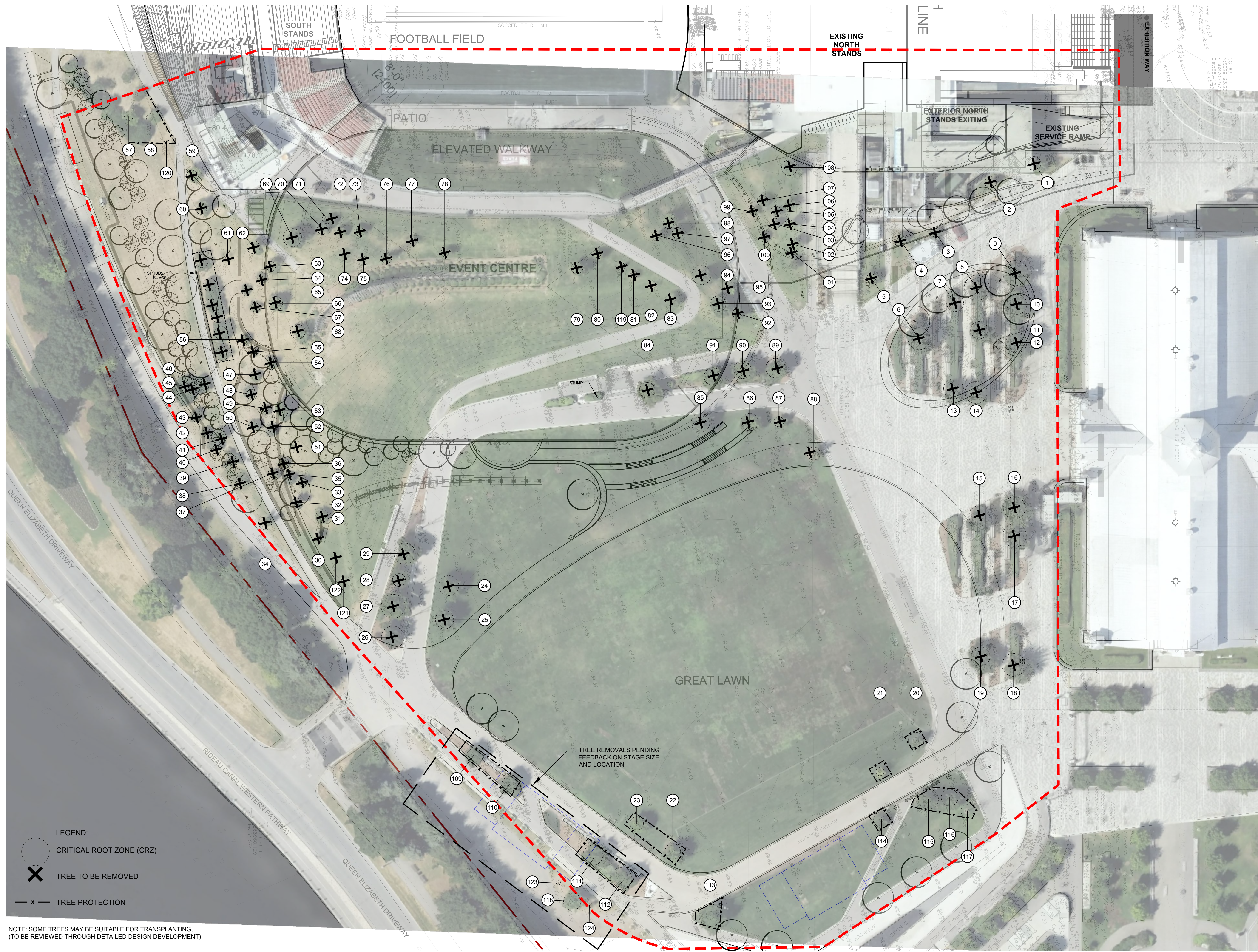
PROJ. NO.

CSW #1766-12

100 Meters







- LEGEND:
- CRITICAL ROOT ZONE (CRZ)
  - TREE TO BE REMOVED
  - TREE PROTECTION

NOTE: SOME TREES MAY BE SUITABLE FOR TRANSPLANTING.  
(TO BE REVIEWED THROUGH DETAILED DESIGN DEVELOPMENT)



100 Meters



**BRISBIN BROOK BEYON ARCHITECTS**  
14 DUNCAN ST 4TH FLOOR  
TORONTO, ON M5H 3G8  
(416) 591-8999

**ENTUITIVE**  
135 LAURIER AVE WEST, SUITE 413  
OTTAWA, ON K1P 5J2  
(343) 308-9274

**TMP**  
200 KING ST. WEST, SUITE 310  
TORONTO, ON M5H 3T4  
(416) 499-8000

**MULVEY & BANANI**  
90 SHEPPARD AVE EAST, SUITE 500  
TORONTO, ON M2N 3A  
(416) 751-2520

**S2O**  
530 N. WOOD STREET #C  
CHICAGO, IL 60622  
(224) 717-1999

**CSW**  
Landscape Architecture  
Urban Design  
Site Planning  
Recreation and Park Planning  
Project Management  
319 McRae Avenue, Suite 502, Ottawa, Ontario, K1Z 0B9  
Tel: (613) 729-4536

NO.	DESCRIPTION	DATE
3	ISSUED FOR CITY SPA COMMENTS	05 SEP 2024
2	ISSUED FOR SPA	07 AUG 2024
1	ISSUED FOR PRE-CONSULTATION	31 MAY 2024

**REVISIONS/ ISSUES**

CONTRACTOR SHALL CHECK AND VERIFY ALL DIMENSIONS AND REPORT ANY OMISSIONS OR DISCREPANCIES TO THE ARCHITECT BEFORE PROCEEDING WITH THE WORK. **DO NOT SCALE THE DRAWINGS**



DRAWN SE/JA  
DATE MAY 2024  
CHECKED JC/CM

**LANSDOWNE EVENT CENTRE**

945 & 1015 Bank Street  
Legal Description: Plan # 4R-46535

**TREE CONSERVATION REPORT  
PROPOSED DEVELOPMENT**

SCALE 1 : 400  
DWG. NO. TCR 1.1  
PROJ. NO. CSW #1766-12

DATE PLOTTED: 01 January, 2000

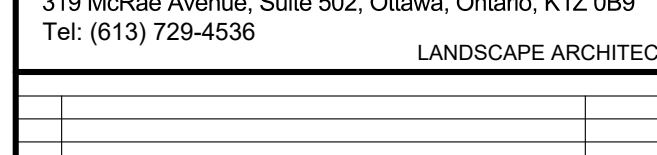
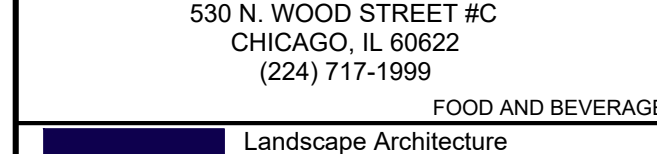
EDR NAME



Area/ Number	Botanical Name	Common Name	DBH	Condition	Arborist notes	Arborist Recommendation	Removal Reason
						REMOVE / REMAIN	CONSTRUCTION CONFLICT/ hazard/
1	<i>Acer saccharum</i>	Sugar Maple	16	Good		REMOVE	CONSTRUCTION CONFLICT
2	<i>Pinus nigra</i>	Austrian Pine	13.5	Good		REMOVE	CONSTRUCTION CONFLICT
3	<i>Amelanchier canadensis</i>	Serviceberry	10	Moderate	Asymmetrical with 10% canopy dieback.	REMOVE	CONSTRUCTION CONFLICT
4	<i>Pinus banksiana</i>	Jack Pine	14.5	Good		REMOVE	CONSTRUCTION CONFLICT
5	<i>Celtis occidentalis</i>	Hackberry	10.5	Moderate	Some die back of the upper canopy. About 5%	REMOVE	CONSTRUCTION CONFLICT
6	<i>Populus deltoides</i>	Bigtooth Aspen	25.5	Good		REMOVE	CONSTRUCTION CONFLICT
7	<i>Populus deltoides</i>	Bigtooth Aspen	19.5	Good		REMOVE	CONSTRUCTION CONFLICT
8	<i>Populus deltoides</i>	Bigtooth Aspen	29	Good		REMOVE	CONSTRUCTION CONFLICT
9	<i>Populus deltoides</i>	Bigtooth Aspen	29	Moderate		REMOVE	CONSTRUCTION CONFLICT
10	<i>Populus deltoides</i>	Bigtooth Aspen	23	Moderate		REMOVE	CONSTRUCTION CONFLICT
11	<i>Populus deltoides</i>	Bigtooth Aspen	20	Good		REMOVE	CONSTRUCTION CONFLICT
12	<i>Populus deltoides</i>	Bigtooth Aspen	24	Good		REMOVE	CONSTRUCTION CONFLICT
13	<i>Populus deltoides</i>	Bigtooth Aspen	23	Good		REMOVE	CONSTRUCTION CONFLICT
14	<i>Populus deltoides</i>	Bigtooth Aspen	25.5	Good		REMOVE	CONSTRUCTION CONFLICT
15	<i>Populus deltoides</i>	Bigtooth Aspen	23.5	Poor	Bark has turned black, about 40% canopy dieback and some severe pruning evident	REMOVE	CONSTRUCTION CONFLICT
16	<i>Populus deltoides</i>	Bigtooth Aspen	25.5	Good		REMOVE	CONSTRUCTION CONFLICT
17	<i>Populus deltoides</i>	Bigtooth Aspen	27	Moderate		REMOVE	CONSTRUCTION CONFLICT
18	<i>Populus deltoides</i>	Bigtooth Aspen	26.5	Good		REMOVE	CONSTRUCTION CONFLICT
19	<i>Populus deltoides</i>	Bigtooth Aspen	22	Good		REMOVE	CONSTRUCTION CONFLICT
20	<i>Acer saccharinum</i>	Silver Maple	18	Poor	40% canopy dieback, and evidence of pruning.	Remain	
21	<i>Celtis occidentalis</i>	Hackberry	9.5	Moderate	10% canopy dieback, some broken limbs and evidence of pruning.	Remain	
22	<i>Acer saccharum</i>	Sugar Maple	18	Good		Remain	
23	<i>Celtis occidentalis</i>	Hackberry	15.5	Moderate	Frost crack and included back along truck of tree.	Remain	
24	<i>Quercus alba</i>	White Oak	23	Moderate	10% canopy dieback	Remain	
25	<i>Acer saccharum</i>	Sugar Maple	21	Good		REMOVE	CONSTRUCTION CONFLICT
26	<i>Aesculus glabra</i>	Ohio Buckeye	26	Good		REMOVE	CONSTRUCTION CONFLICT
27	<i>Acer saccharum</i>	Sugar Maple	27.5	Good		REMOVE	CONSTRUCTION CONFLICT
28	<i>Gymnocladus dioica</i>	Kentucky Coffee Tree	15	Moderate	Some minor canopy dieback	REMOVE	CONSTRUCTION CONFLICT
29	<i>Juglans nigra</i>	Black Walnut	24.5	Good		REMOVE	CONSTRUCTION CONFLICT
30	<i>Gymnocladus dioica</i>	Kentucky Coffee Tree	5.5	Poor	50% canopy dieback and limited overall growth. Some broken limbs	REMOVE	CONSTRUCTION CONFLICT
31	<i>Celtis occidentalis</i>	Hackberry	15	Good		REMOVE	CONSTRUCTION CONFLICT
32	<i>Amelanchier canadensis</i>	Serviceberry	10	Good		REMOVE	CONSTRUCTION CONFLICT
33	<i>Celtis occidentalis</i>	Hackberry	9.5	Good		REMOVE	CONSTRUCTION CONFLICT
34	<i>Acer platanoides "Columnare"</i>	Columnar Norway Maple	15	Good		REMOVE	CONSTRUCTION CONFLICT
35	<i>Picea mariana</i>	Black Spruce	13	Good		REMOVE	CONSTRUCTION CONFLICT
36	<i>Pinus banksiana</i>	Jack Pine	11	Good		REMOVE	CONSTRUCTION CONFLICT
37	<i>Thuja occidentalis</i>	Eastern-white Cedar	9	Good		REMOVE	CONSTRUCTION CONFLICT
38	<i>Amelanchier canadensis</i>	Serviceberry	9	Moderate	Decay on trunk with some cavities. Damage to leader.	REMOVE	CONSTRUCTION CONFLICT
39	<i>Betula papyrifera</i>	Paper bark Birch	11	Good		REMOVE	CONSTRUCTION CONFLICT
40	<i>Pinus banksiana</i>	Jack Pine	15	Good		REMOVE	CONSTRUCTION CONFLICT
41	<i>Larix laricina</i>	Tamarack	20	Good		REMOVE	CONSTRUCTION CONFLICT
42	<i>Thuja occidentalis</i>	Eastern-white Cedar	15	Good		REMOVE	CONSTRUCTION CONFLICT
43	<i>Cornus alternifolia</i>	Pagoda Dogwood	10	Moderate	Damage to bark on stem. No clear leader and deformed canopy	REMOVE	CONSTRUCTION CONFLICT
44	<i>Shrub- Rhus typhina</i>	Staghorn Sumac		Good	Male	REMOVE	CONSTRUCTION CONFLICT
45	<i>Gymnocladus dioica</i>	Kentucky Coffee Tree	15	Good		REMOVE	CONSTRUCTION CONFLICT
46	<i>Shrub- Rhus typhina</i>	Staghorn Sumac		Good	Male	REMOVE	CONSTRUCTION CONFLICT
47	<i>Thuja occidentalis</i>	Eastern-white Cedar	10	Good		REMOVE	CONSTRUCTION CONFLICT
48	<i>Picea mariana</i>	Black Spruce	12	Good		REMOVE	CONSTRUCTION CONFLICT
49	<i>Thuja occidentalis</i>	Eastern-white Cedar	8	Good		REMOVE	CONSTRUCTION CONFLICT
50	<i>Pinus banksiana</i>	Jack Pine	12	Good		REMOVE	CONSTRUCTION CONFLICT
51	<i>Betula papyrifera</i>	Paper bark Birch	14	Dead		REMOVE	CONSTRUCTION CONFLICT
52	<i>Picea mariana</i>	Black Spruce	12	Good		REMOVE	CONSTRUCTION CONFLICT
53	<i>Acer platanoides "Columnare"</i>	Columnar Norway Maple	19.5	Good		REMOVE	CONSTRUCTION CONFLICT
54	<i>Larix laricina</i>	Tamarack	16	Good		REMOVE	CONSTRUCTION CONFLICT
55	<i>Cornus alternifolia</i>	Pagoda Dogwood	8	Good		REMOVE	CONSTRUCTION CONFLICT
56	<i>Celtis occidentalis</i>	Hackberry	9.5	Good		REMOVE	CONSTRUCTION CONFLICT
57	TBD					Remain	CONSTRUCTION CONFLICT
58	TBD					Remain	CONSTRUCTION CONFLICT
59	<i>Acer platanoides "Columnare"</i>	Columnar Norway Maple	13.5	Good		REMOVE	CONSTRUCTION CONFLICT
60	<i>Celtis occidentalis</i>	Hackberry	12	Good		REMOVE	CONSTRUCTION CONFLICT
61	<i>Sorbus hybrida</i>	Oak-leaf Mountain Ash	6	Good		REMOVE	CONSTRUCTION CONFLICT
62	<i>Acer platanoides "Columnare"</i>	Columnar Norway Maple	15	Good		REMOVE	CONSTRUCTION CONFLICT
63	<i>Celtis occidentalis</i>	Hackberry	11	Good		REMOVE	CONSTRUCTION CONFLICT
64	<i>Thuja occidentalis</i>	Eastern-white Cedar	9	Moderate	Asymmetrical growth and about 20% dieback.	REMOVE	CONSTRUCTION CONFLICT
65	<i>Pinus strobus</i>	White Pine	9	Good		REMOVE	CONSTRUCTION CONFLICT
66	<i>Acer platanoides "Columnare"</i>	Columnar Norway Maple	16	Moderate	10-15% canopy dieback	REMOVE	CONSTRUCTION CONFLICT
67	<i>Pinus banksiana</i>	Jack Pine	10	Good		REMOVE	CONSTRUCTION CONFLICT
68	<i>Acer platanoides "Columnare"</i>	Columnar Norway Maple	17	Good		REMOVE	CONSTRUCTION CONFLICT
69	<i>Acer platanoides "Columnare"</i>	Columnar Norway Maple	21	Good		REMOVE	CONSTRUCTION CONFLICT
70	<i>Picea mariana</i>	Black Spruce	12	Good		REMOVE	CONSTRUCTION CONFLICT

71	<i>Thuja occidentalis</i>	Eastern-white Cedar	11	Good		REMOVE	CONSTRUCTION CONFLICT
72	<i>Tsuga canadensis</i>	Eastern Hemlock	7.5	Good		REMOVE	CONSTRUCTION CONFLICT
73	<i>Tsuga canadensis</i>	Eastern Hemlock	10	Good		REMOVE	CONSTRUCTION CONFLICT
74	<i>Acer saccharum</i>	Sugar Maple	5	Good		REMOVE	CONSTRUCTION CONFLICT
75	<i>Acer saccharum</i>	Sugar Maple	5	Good		REMOVE	CONSTRUCTION CONFLICT
76	<i>Acer platanoides "Columnare"</i>	Columnar Norway Maple	12	Poor	Included bark on trunk and canopy die-back (45%). Broken branches	REMOVE	CONSTRUCTION CONFLICT
77	<i>Betula papyrifera</i>	Paper bark Birch	5.5	Good		REMOVE	CONSTRUCTION CONFLICT
78	<i>Betula papyrifera</i>	Paper bark Birch	9	Missing		REMOVE	CONSTRUCTION CONFLICT
79	<i>Acer platanoides "Columnare"</i>	Columnar Norway Maple	13.5	Good		REMOVE	CONSTRUCTION CONFLICT
80	<i>Betula papyrifera</i>	Paper bark Birch	8	Good		REMOVE	CONSTRUCTION CONFLICT
81	<i>Picea mariana</i>	Black Spruce	8.5	Good		REMOVE	CONSTRUCTION CONFLICT
82	<i>Gymnocladus dioica</i>	Kentucky Coffee Tree	4	Poor	Limited growth and bud development	REMOVE	CONSTRUCTION CONFLICT
83	<i>Celtis occidentalis</i>	Hackberry	11.5	Moderate	Some upper canopy dieback (5-10%)	REMOVE	CONSTRUCTION CONFLICT
84	<i>Juglans nigra</i>	Black Walnut	18	Good		REMOVE	CONSTRUCTION CONFLICT
85	<i>Quercus robur</i>	Red Oak	21.5	Good		REMOVE	CONSTRUCTION CONFLICT
86	<i>Fagus sylvatica</i>	American Beech	20	Good		REMOVE	CONSTRUCTION CONFLICT
87	<i>Celtis occidentalis</i>	Hackberry	11.5	Good		REMOVE	CONSTRUCTION CONFLICT
88	<i>Acer platanoides "Columnare"</i>	Columnar Norway Maple	15	Poor	A small number of broken limbs and some decay of the bark along the trunk.	REMOVE	CONSTRUCTION CONFLICT
89	<i>Aesculus glabra</i>	Ohio Buckeye	22.5	Good		REMOVE	CONSTRUCTION CONFLICT
90	<i>Juglans nigra</i>	Black Walnut	20	Good		REMOVE	CONSTRUCTION CONFLICT
91	<i>Juglans nigra</i>	Black Walnut	20	Good		REMOVE	CONSTRUCTION CONFLICT
92	<i>Celtis occidentalis</i>	Hackberry	11	Good		REMOVE	CONSTRUCTION CONFLICT
93	<i>Acer platanoides "Columnare"</i>	Columnar Norway Maple	18	Good		REMOVE	CONSTRUCTION CONFLICT
94	<i>Picea mariana</i>	Black Spruce	22	Good		REMOVE	CONSTRUCTION CONFLICT
95	<i>Acer platanoides "Columnare"</i>	Columnar Norway Maple	6.5	Poor	Trunk is split.	REMOVE	CONSTRUCTION CONFLICT
96	<i>Celtis occidentalis</i>	Hackberry	8	Good		REMOVE	CONSTRUCTION CONFLICT
97	<i>Thuja occidentalis</i>	Eastern-white Cedar	12.5	Good		REMOVE	CONSTRUCTION CONFLICT
98	<i>Pinus strobus</i>	White Pine	12.5	Good		REMOVE	CONSTRUCTION CONFLICT
99	<i>Ostrya virginiana</i>	Ironwood	8.5	Good		REMOVE	CONSTRUCTION CONFLICT
100	<i>Betula papyrifera</i>	Paper bark Birch	6	Good		REMOVE	CONSTRUCTION CONFLICT
101	<i>Betula papyrifera</i>	Paper bark Birch	8.5	Good		REMOVE	CONSTRUCTION CONFLICT
102	<i>Amelanchier canadensis</i>	Serviceberry	10	Good		REMOVE	CONSTRUCTION CONFLICT
103	<i>Picea mariana</i>	Black Spruce	12	Good		REMOVE	CONSTRUCTION CONFLICT
104	<i>Amelanchier canadensis</i>	Serviceberry	10	Good		REMOVE	CONSTRUCTION CONFLICT
105	<i>Picea mariana</i>	Black Spruce	12	Good		REMOVE	CONSTRUCTION CONFLICT
106	<i>Amelanchier canadensis</i>	Serviceberry	10	Good		REMOVE	CONSTRUCTION CONFLICT
107	<i>Thuja occidentalis</i>	Eastern-white Cedar	12	Good		REMOVE	CONSTRUCTION CONFLICT
108	<i>Acer platanoides "Columnare"</i>	Columnar Norway Maple	18	Good		REMOVE	CONSTRUCTION CONFLICT
109	<i>Gymnocladus dioica</i>	Kentucky Coffee Tree	15.5	Good		Pending	
110	<i>Gymnocladus dioica</i>	Kentucky Coffee Tree	17.5	Good		Pending	
111	<i>Juglans nigra</i>	Black Walnut	23	Good		Pending	
112	<i>Juglans nigra</i>	Black Walnut	25	Moderate	Some included bark along the trunk	Pending	
113	<i>Quercus alba</i>	White Oak	26	Good		Remain	
114	<i>Celtis occidentalis</i>	Hackberry	18.5	Poor	Asymmetrical with poor growth patterns. Tree has been topped	REMOVE	Hazard
115	<i>Quercus robur</i>	Red Oak	23	Good		Remain	
116	<i>Aesculus glabra</i>	Ohio Buckeye	19.5	Good		Remain	
117	<i>Juglans nigra</i>	Black Walnut	15	Poor	Poor quality tree with about 90% canopy die back and some witches broom on branches.	REMOVE	Hazard
118	<i>Acer saccharinum</i>	Silver Maple	20	Good		Pending	
119	<i>Picea mariana</i>	Black Spruce	10	Moderate	Asymmetrical with 5% die-back of lower branches. Some broken lower branches	REMOVE	CONSTRUCTION CONFLICT
120	<i>Acer saccharum</i>	Sugar Maple	5	Good		Remain	
121	<i>Ostrya virginiana</i>	Ironwood	4	Good		Remain	
122	<i>Gymnocladus dioica</i>	Kentucky Coffee Tree	5	Good		Remove	
123	<i>Ostrya virginiana</i>	Ironwood	5	Good		Pending	
124	<i>Ostrya virginiana</i>	Ironwood	5	Good		Pending	

GENERAL NOTE:  
ALL TREES INCLUDED IN THE SCHEDULE ABOVE  
ARE CITY-OWNED TREES



NO.	DESCRIPTION	DATE
3	ISSUED FOR CITY SPA COMMENTS	05 SEP 2024
2	ISSUED FOR SPA	07 AUG 2024
1	ISSUED FOR PRE-CONSULTATION	31 MAY 2024

REVISIONS/ ISSUES

CONTRACTOR SHALL CHECK AND VERIFY ALL DIMENSIONS AND REPORT ANY OMISSIONS OR DISCREPANCIES TO THE ARCHITECT BEFORE PROCEEDING WITH THE WORK.  
DO NOT SCALE THE DRAWINGS



SCALE: N.T.S.  
PROJ. NO. CSW #1766-12

DRAWN: SE/JA  
DATE: MAY 2024  
CHECKED: JC/CM

LANSLOWNE  
EVENT CENTRE  
945 & 1015 Bank Street  
Legal Description: Plan # 4R-46535

DWG. TITLE: TREE CONSERVATION REPORT  
SCALE: N.T.S.  
DWG. NO.: TCR 1.2

DATE PLOTTED: 01 January, 2000

EOR NAME