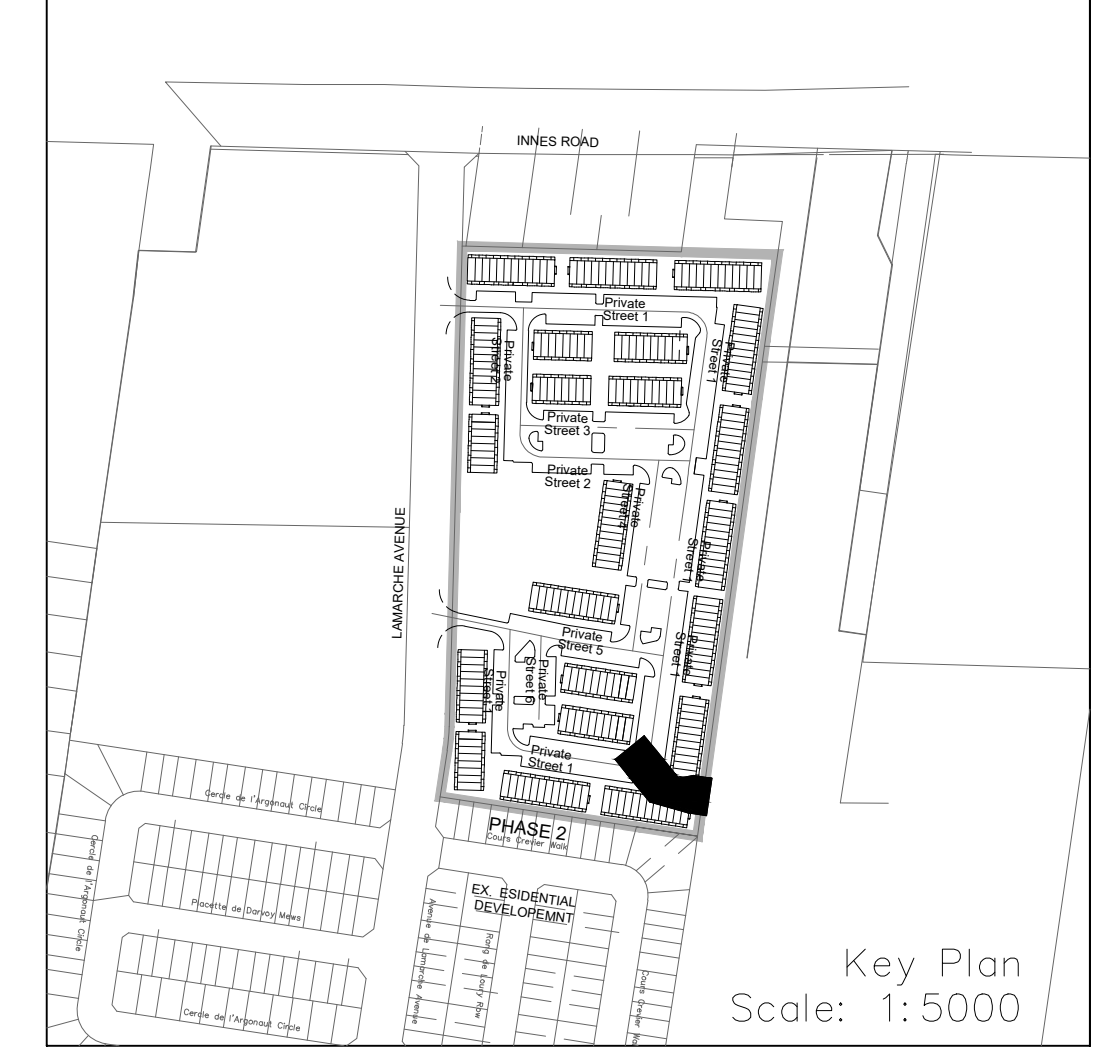
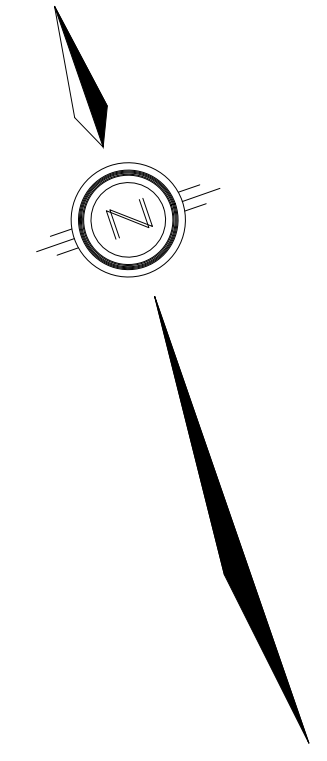
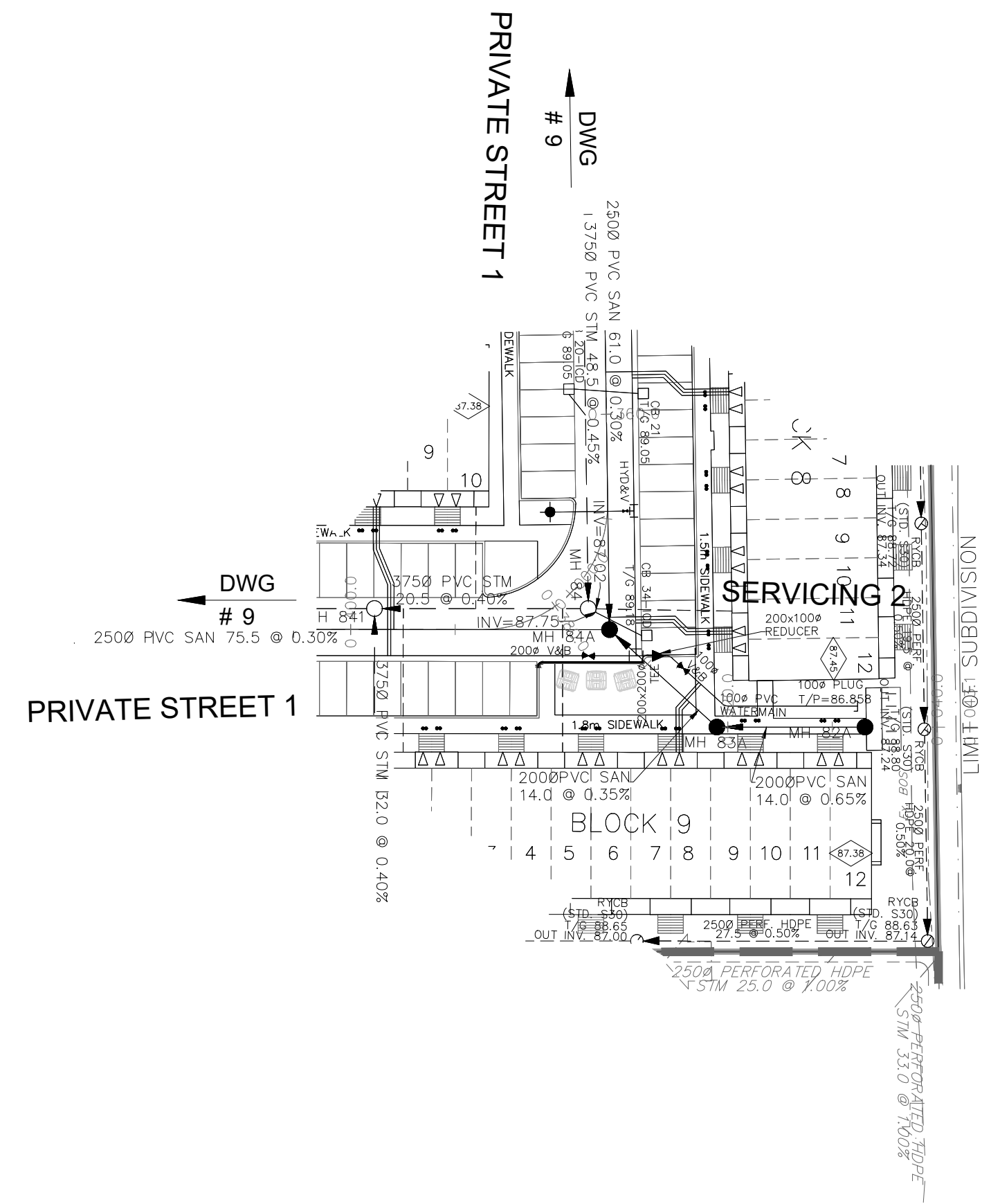


NOTES:

1. ANY DISTURBED AREA DURING CONSTRUCTION TO BE RESTORED TO THE ORIGINAL CONDITION OR BETTER TO THE SATISFACTION OF THE AUTHORITIES HAVING JURISDICTION.
2. CONTRACTOR TO VERIFY THE PRECISE LOCATIONS AND INVERT ELEVATIONS OF EX. UNDERGROUND SERVICES AND UTILITIES PRIOR TO STARTING CONSTRUCTION.
3. ALL EXISTING TREES, SHRUBS ETC. WITHIN LOTS, BLOCKS AND ROADS TO BE REMOVED, UNLESS OTHERWISE NOTED.
4. PERMISSION REQUIRED FOR WORK ON ADJACENT LANDS.
5. FOR WATERMAIN STUBS, 2.4m MIN. COVER TO BE PROVIDED.
6. ANY DISTURBED MATERIAL ENCOUNTERED BELOW THE SUBGRADE LEVEL WITHIN A BUILDING FOOTPRINT TO BE SUB-EXCAVATED AND BACKFILLED WITH COMPACTED ENGINEERED FILL AS PER GEOTECHNICAL ENGINEERS RECOMMENDATION.
7. FOR CATCHBASIN DATA, REFER TO DWG. No. 2 FOR DETAILS.
8. ALL DWELLINGS TO BE PROVIDED WITH PRESSURE REDUCING VALVES UNLESS OTHERWISE NOTED.



LEGEND

CROSS	BIKE RACK	EARTHIN (DWG. 3 FOR DETAILS)
45° BEND	STREET LIGHT STANDARD	CONCRETE SIDEWALK
LATERAL	CURB & RECESSED CURB	ASPHALT SIDEWALK
HYDRANT, VALVE & VB	CHAINLINK FENCE (1.5m UNLESS OTHERWISE NOTED)	NOISE BARRIER (2.2m)
TEE	WOODEN POST AND RAIL FENCE	CONSTRUCTION FENCE
VALVE & VC	POST AND RAIL FENCE	PHASING LIMITS
VALVE & VB	PROPERTY BOUNDARY	BOREROLE (BO)
11.25° BEND	TEST PIT (TP)	AUGER HOLE (AH)
REDUCER	MONITORING WELL LOCATION	CONCEPTUAL WELL LOCATION
CAP	TOP OF FOUNDATION ELEVATION	FINISHED FLOOR ELEVATION
SANITARY MAINTENANCE HOLE	UNDERSIDE OF FOOTING ELEVATION	NUMBER OF RISERS
CURB INLET CATCHBASIN & LEAD	INTERCONNECTED	REDUCING VALVES
CATCHBASIN/ MAINTENANCE HOLE	WALKOUT UNITS	SLAB ON GRADE
INTERCONNECTED	OVERLAND FLOW DIRECTION	EXTERNAL OVERLAND FLOW DIRECTION
CATCH BASIN & LEADS	EMERGENCY OVERLAND FLOW DIRECTION	TACTILE WALKING SURFACE INDICATOR
CAP	AS PER CITY OF OTTAWA STD. SC6, SC7, SC7.1, SC7.2, SC7.3	PREVIOUS PHASES
CURB STOP	EXISTING SANITARY MAINTENANCE HOLE	EXISTING STORM MAINTENANCE HOLE
SINGLE SERVICE LOCATION (ST, SAN & WM)	EXISTING SANITARY MAINTENANCE HOLE	GROUNDWATER LEVEL PER PATERNSON GROUP DWG. PG0006-10
TEE CATCHBASIN	PERFORATED PIPE	ELBOW CATCHBASIN
PERFORATED PIPE	DITCH AND CULVERT	36.0m-250# INFILTRATION TRENCH (TYP.), SEE DETAIL ON DRAWING 4.
ELBOW CATCHBASIN	DITCH AND CULVERT	HYDRO TRANSFORMER
DITCH AND CULVERT	RETAINING WALL (SEE NOTES ON DWG. 1 AND STRUCTURAL DWG'S FOR DETAIL)	

NOT FOR CONSTRUCTION

TOPOGRAPHIC INFORMATION
 TOPOGRAPHIC INFORMATION PROVIDED BY J.D. BARNES LIMITED
 PROJECT No. 16-10-116-00, SURVEYS DATED NOVEMBER 30, 2017.
 PROJECT No. 16-10-116-00_PH2, SURVEYS DATED SEPTEMBER 27, 2019.
 PROJECT No. 22-10-030-01, SURVEYS DATED JUNE 21, 2023.

SITE PLAN INFORMATION
 SITE PLAN PROVIDED BY Q4 ARCHITECTS, DATED ON AUGUST 6, 2024.

ELEVATION NOTE
 ELEVATIONS ARE GEODETIC AND ARE DERIVED FROM SITE BENCHMARK NCC CONTROL POINT 001196530229.
ELEVATION = 86.12 m

No.	BY	DATE	DESCRIPTION
1	S.L.M.	2024-08-30	1st SUBMISSION

CITY OF OTTAWA

PROJECT No. 24-1403

Licensed Professional Engineer
S. L. MERRICK
 100186523
 24-08-30
 PROVINCE OF ONTARIO

CAIVAN (ORLEANS VILLAGE 2) LTD.

ORLEANS VILLAGE PHASE 4

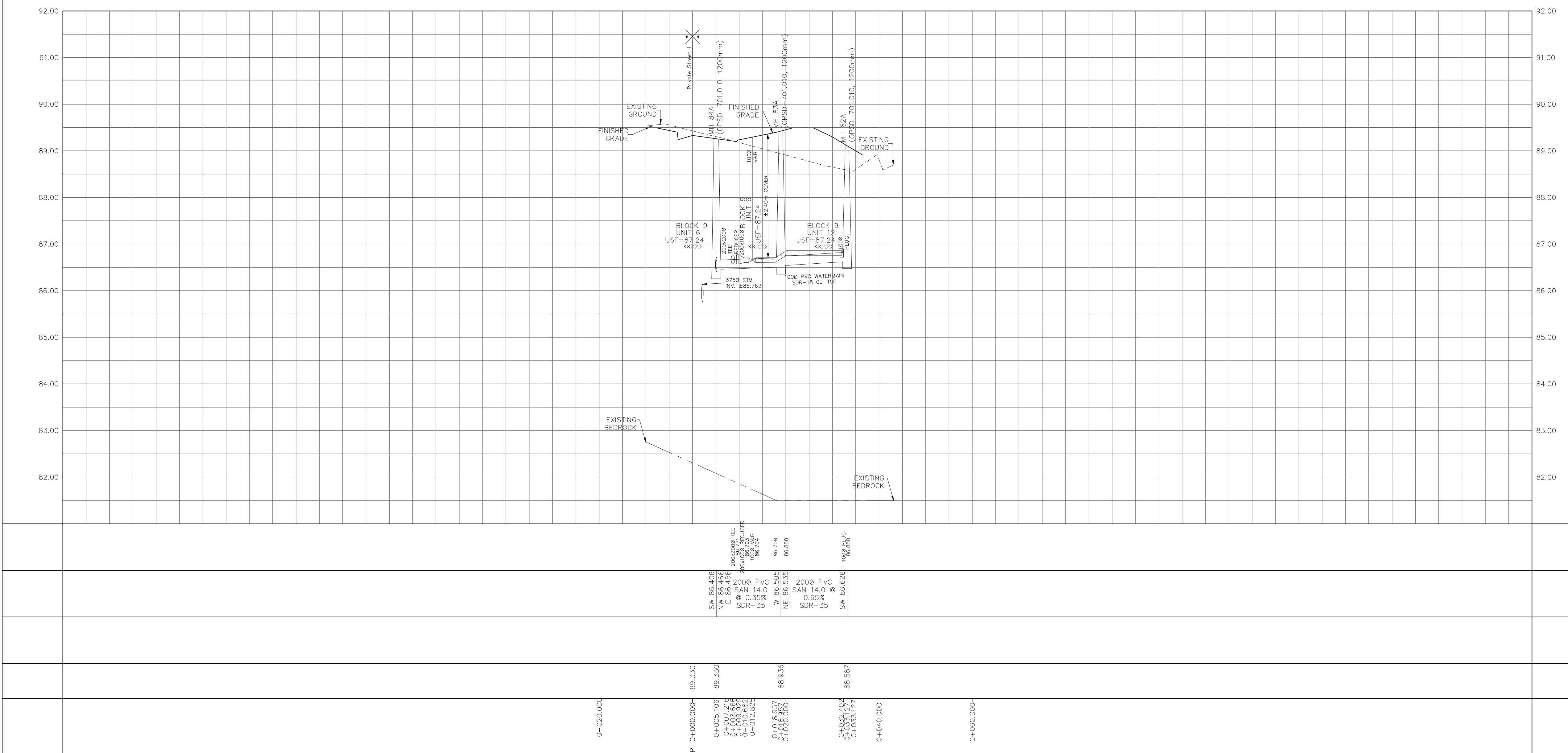
DSEL

120 Iler Road, Unit 103
 Stittsville, ON K2S 1E9
 Tel: (613) 836-0856
 Fax: (613) 836-7183
 www.DSEL.ca

SERVICING 2

STA. 0+10.000 TO STA. 0+43.127

DRAWN BY:	C.P.B.	CHECKED BY:	S.L.M.	SHEET No.
DESIGNED BY:	C.P.B.	CHECKED BY:	S.L.M.	15 OF 25
SCALE:	1:500	DATE:	AUGUST 2024	



CITY PLAN No. ###
 CITY FILE No. ###