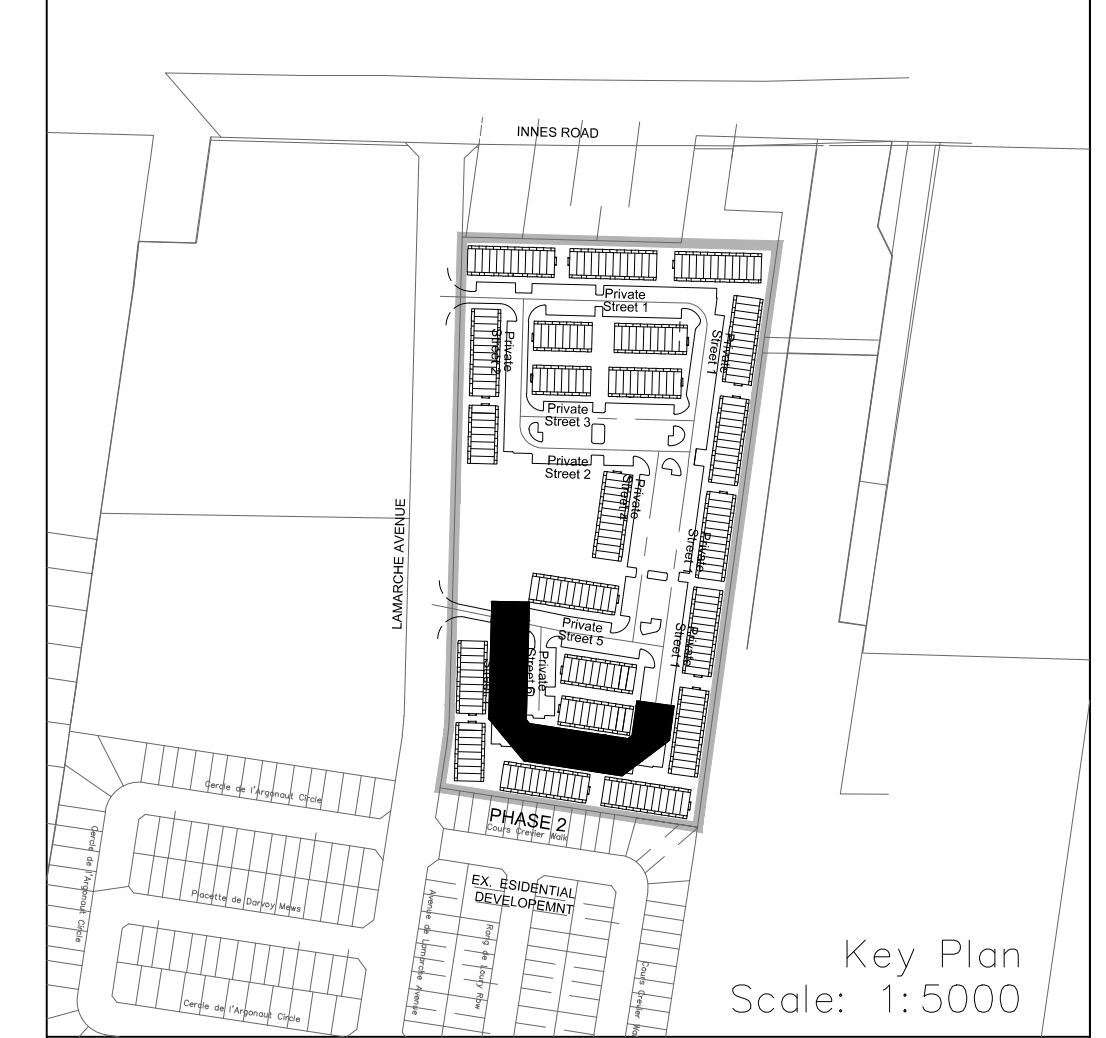
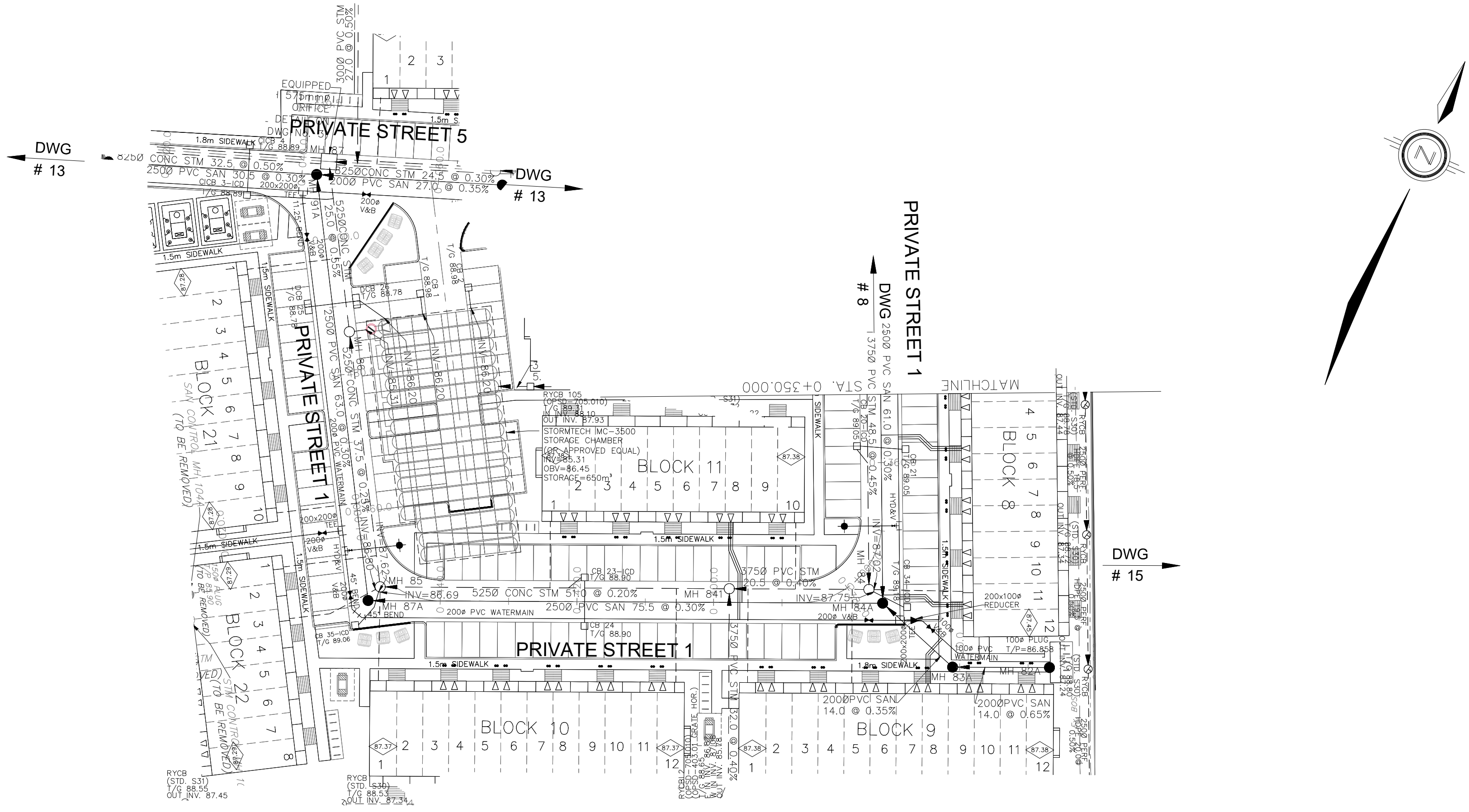


NOTES:

1. ANY DISTURBED AREA DURING CONSTRUCTION TO BE RESTORED TO THE ORIGINAL CONDITION OR BETTER TO THE SATISFACTION OF THE AUTHORITIES HAVING JURISDICTION. CONTRACTOR TO VERIFY THE PRECISE LOCATIONS AND INVERT ELEVATIONS OF EX. UNDERGROUND SERVICES AND EX. UTILITIES PRIOR TO STARTING CONSTRUCTION.
2. ALL EXISTING TREES, SHRUBS ETC. WITHIN LOTS, BLOCKS AND ROADS TO BE REMOVED, UNLESS OTHERWISE NOTED.
3. PERMISSION REQUIRED FOR WORK ON ADJACENT LANDS.
4. FOR WATERMAIN STUBS, 2.4m MIN. COVER TO BE PROVIDED.
5. ANY DISTURBED MATERIAL ENCOUNTERED BELOW THE SUBGRADE LEVEL WITHIN A BUILDING FOOTPRINT TO BE SUB-EXCAVATED AND BACKFILLED WITH COMPACTED ENGINEERED FILL AS PER GEOTECHNICAL ENGINEERS RECOMMENDATION.
6. FOR CATCHBASIN DATA, REFER TO DWG. No. 2 FOR DETAILS.
7. ALL DWELLINGS TO BE PROVIDED WITH PRESSURE REDUCING VALVES UNLESS OTHERWISE NOTED.



LEGEND

CROSS	BIKE RACK	EARTHBIN (DWG. 3 FOR DETAILS)
45° BEND	STREET LIGHT STANDARD	CONCRETE SIDEWALK
LATERAL	CURB & RECESSED CURB	ASPHALT SIDEWALK
HYDRANT, VALVE & VB	CHAIN LINK FENCE (1.5m UNLESS OTHERWISE NOTED)	NOISE BARRIER (2.2m)
TEE	WOODEN POST	CONSTRUCTION FENCE
VALVE & VC	AND RAIL FENCE	POST AND RAIL FENCE
VALVE & VB	PHASING LIMITS	PROPERTY BOUNDARY
22.5° BEND	CONSTRUCTION FENCE	TEST PIT (TP)
11.25° BEND	POST AND RAIL FENCE	AUGER HOLE (AH)
REDUCER	PHASING LIMITS	MONITORING WELL LOCATION
CAP	PROPERTY BOUNDARY	CONCEPTUAL WELL LOCATION
SANITARY MAINTENANCE HOLE	BOREHOLE (BH)	TOP OF FOUNDATION ELEVATION
CAP	TEST PIT (TP)	FINISHED FLOOR ELEVATION
STREET CATCHBASIN & LEAD	AUGER HOLE (AH)	UNDERSIDE OF FOOTING ELEVATION
INLET CATCHBASIN WITH CLOSED LID & LEAD	MONITORING WELL LOCATION	NUMBER OF RISERS
STORM MAINTENANCE HOLE	CONCEPTUAL WELL LOCATION	UNITS REQUIRING PRESSURE
CURB INLET CATCHBASIN & LEAD	TOP OF FOUNDATION ELEVATION	REDUCING VALVES
CATCHBASIN/ MAINTENANCE HOLE - INTERCONNECTED	FINISHED FLOOR ELEVATION	WALK-OUT UNITS
CATCH BASIN & LEADS	UNDERSIDE OF FOOTING ELEVATION	SLAB ON GRADE
CAP	NUMBER OF RISERS	OVERLAND FLOW DIRECTION
CURB STOP	UNITS REQUIRING PRESSURE	EXTERNAL OVERLAND FLOW DIRECTION
SINGLE SERVICE LOCATION (ST, SAN & WM)	REDUCING VALVES	EMERGENCY OVERLAND FLOW DIRECTION
TEE CATCHBASIN	WALK-OUT UNITS	TACTILE WALKING SURFACE INDICATOR (AS PER CITY OF OTTAWA STD. SC6, SC7, SC7.1, SC7.2, SC7.3)
PERFORATED PIPE	SLAB ON GRADE	PREVIOUS PHASES
ELBOW CATCHBASIN	OVERLAND FLOW DIRECTION	EXISTING SANITARY MAINTENANCE HOLE
DITCH AND CULVERT	EXTERNAL OVERLAND FLOW DIRECTION	EXISTING STORM MAINTENANCE HOLE
36.0m-250# INFILTRATION TRENCH (TYP.), SEE DETAIL ON DRAWING 4.	EMERGENCY OVERLAND FLOW DIRECTION	MAINTENANCE HOLE
HYDRO TRANSFORMER	TACTILE WALKING SURFACE INDICATOR (AS PER CITY OF OTTAWA STD. SC6, SC7, SC7.1, SC7.2, SC7.3)	GROUNDWATER LEVEL PER PATERNSON GROUP DWG. PG0006-10
RETAINING WALL (SEE NOTES ON DWG. 1 AND STRUCTURAL DWG'S FOR DETAIL)	PREVIOUS PHASES	

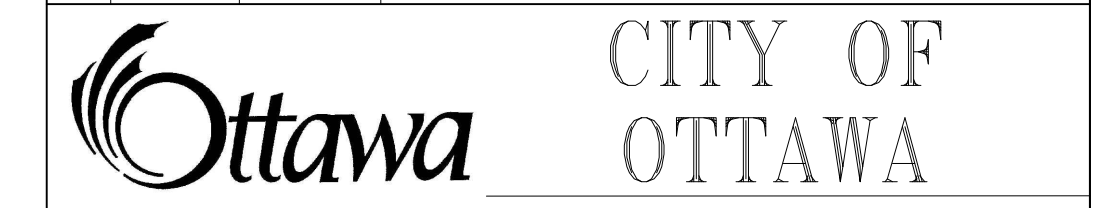
NOT FOR CONSTRUCTION

TOPOGRAPHIC INFORMATION
 TOPOGRAPHIC INFORMATION PROVIDED BY J.D. BARNES LIMITED
 PROJECT No. 16-10-116-00, SURVEYS DATED NOVEMBER 30, 2017.
 PROJECT No. 16-10-116-00_P2, SURVEYS DATED SEPTEMBER 27, 2019.
 PROJECT No. 22-10-030-01, SURVEYS DATED JUNE 21, 2023.

SITE PLAN INFORMATION
 SITE PLAN PROVIDED BY Q4 ARCHITECTS, DATED ON AUGUST 6, 2024.

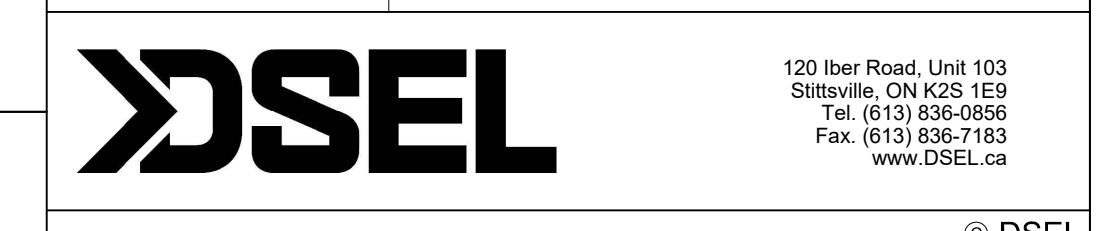
ELEVATION NOTE
 ELEVATIONS ARE GEODETIC AND ARE DERIVED FROM SITE BENCHMARK NCC CONTROL POINT 001196530229.
 ELEVATION = 86.12 m

1	S.L.M.	2024-08-30	1st SUBMISSION
---	--------	------------	----------------



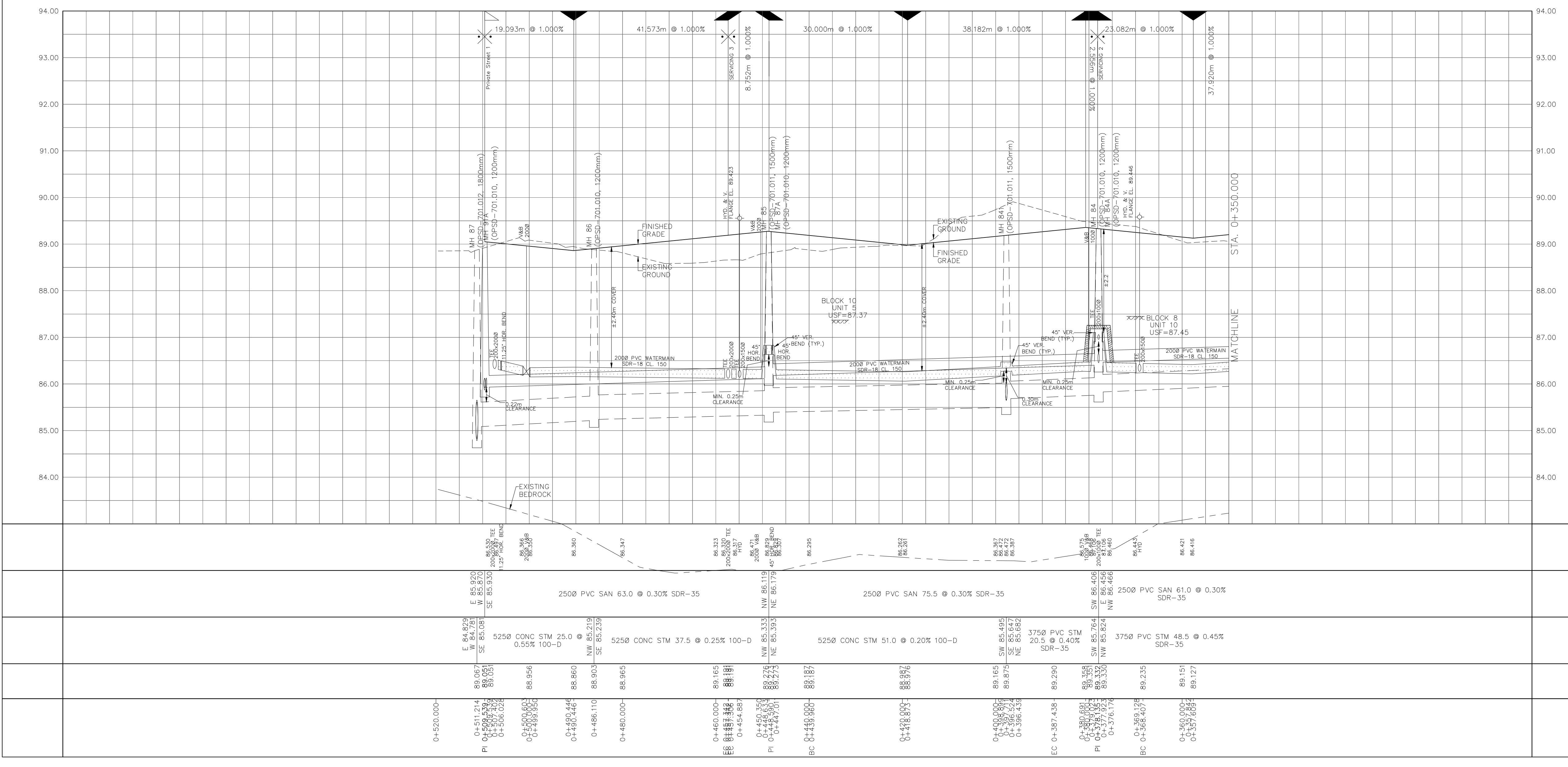
PROJECT No. 24-1403

CAIVAN (ORLEANS VILLAGE 2) LTD. ORLEANS VILLAGE PHASE 4



Private Street 1 © DSEL
 STA. 0+350.000 TO STA. 0+519.539

DRAWN BY:	C.P.B.	CHECKED BY:	S.L.M.	SHEET NO.
DESIGNED BY:	C.P.B.	CHECKED BY:	S.L.M.	9 OF 25
SCALE:	1:500	DATE:	AUGUST 2024	



CITY PLAN No. ###
CITY FILE No. ###