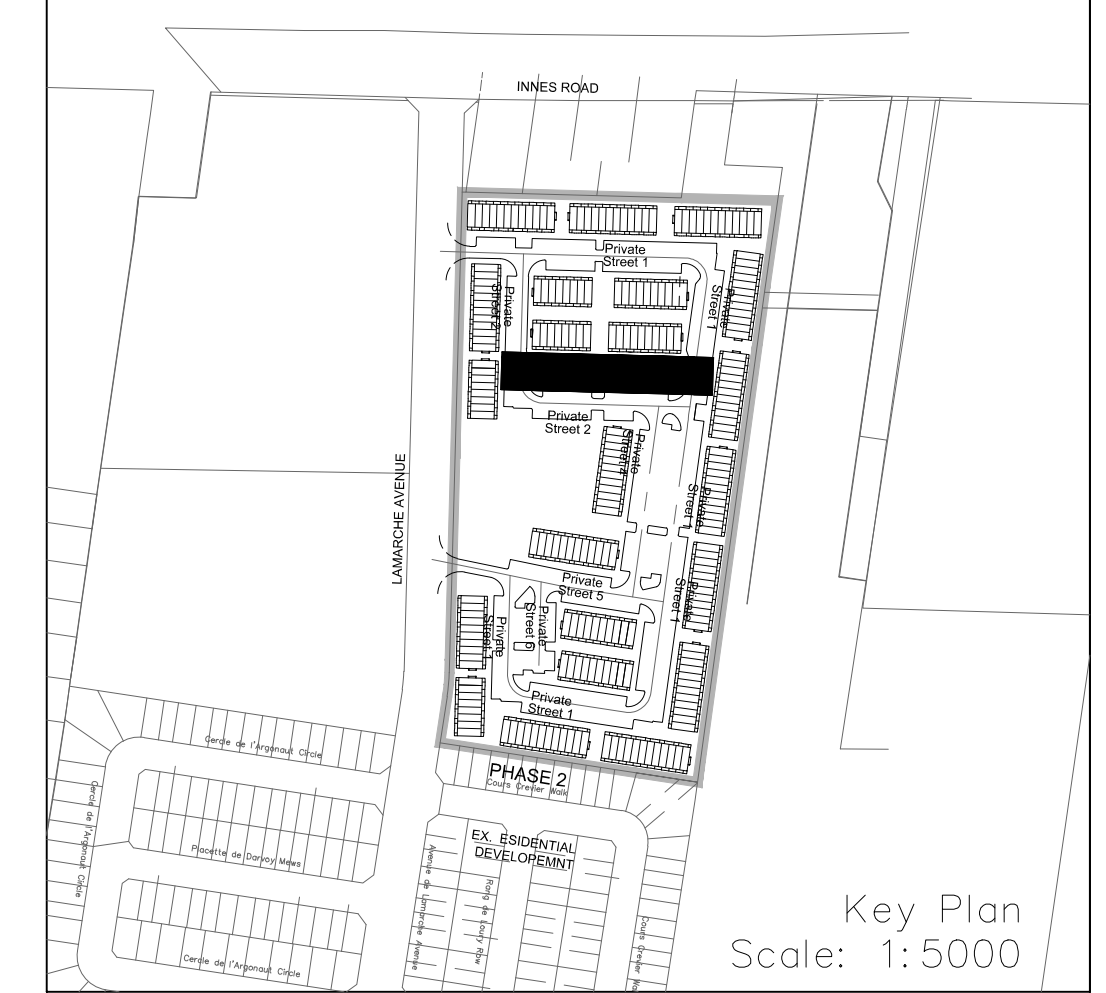
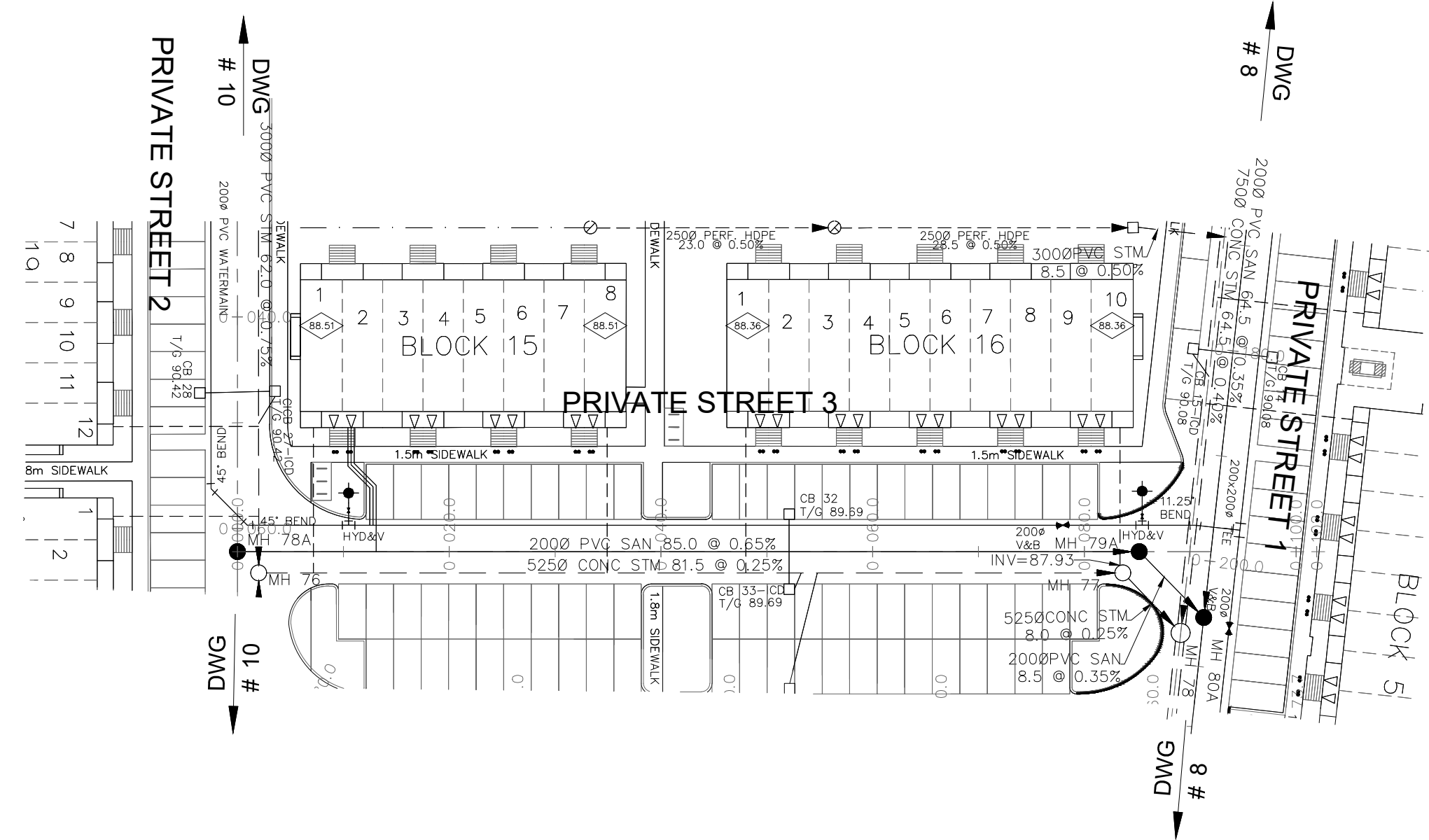


**NOTES:**

1. ANY DISTURBED AREA DURING CONSTRUCTION TO BE RESTORED TO THE ORIGINAL CONDITION OR BETTER TO THE SATISFACTION OF THE AUTHORITIES HAVING JURISDICTION. CONTRACTOR TO VERIFY THE PRECISE LOCATIONS AND INVERT ELEVATIONS OF EX. UNDERGROUND SERVICES AND EX. UTILITIES PRIOR TO STARTING CONSTRUCTION.
2. ALL EXISTING TREES, SHRUBS ETC. WITHIN LOTS, BLOCKS AND ROADS TO BE REMOVED, UNLESS OTHERWISE NOTED.
3. PERMISSION REQUIRED FOR WORK ON ADJACENT LANDS.
4. FOR WATERMAIN STUBS, 2.4m MIN. COVER TO BE PROVIDED.
5. ANY DISTURBED MATERIAL ENCOUNTERED BELOW THE SUBGRADE LEVEL WITHIN A BUILDING FOOTPRINT TO BE SUB-EXCAVATED AND BACKFILLED WITH COMPACTED ENGINEERED FILL AS PER GEOTECHNICAL ENGINEERS RECOMMENDATION.
6. FOR CATCHBASIN DATA, REFER TO DWG. No. 2 FOR DETAILS.
7. ALL DWELLINGS TO BE PROVIDED WITH PRESSURE REDUCING VALVES UNLESS OTHERWISE NOTED.



**LEGEND**

CROSS	BIKE RACK	EARTHEN (DWG. 3 FOR DETAILS)
45° BEND	STREET LIGHT STANDARD	CONCRETE SIDEWALK
LATERAL	CURB & RECESSED CURB	ASPHALT SIDEWALK
HYDRANT, VALVE & VB	CHAINLINK FENCE (1.5m UNLESS OTHERWISE NOTED)	NOISE BARRIER (2.2m)
TEE	WOODEN POST AND RAIL FENCE	CONSTRUCTION FENCE
VALVE & VC	POST AND RAIL FENCE	PHASING LIMITS
VALVE & VB	PROPERTY BOUNDARY	BOREHOLE (BH)
22.5° BEND	TEST PIT (TP)	AUGER HOLE (AH)
11.25° BEND	CONCEPTUAL WELL LOCATION	TOP OF FOUNDATION ELEVATION
REDUCER	FINISHED FLOOR ELEVATION	UNDERSIDE OF FOOTING ELEVATION
CAP	NUMBER OF RISERS	UNITS REQUIRING PRESSURE REDUCING VALVES
SANITARY MAINTENANCE HOLE	INTERCONNECTED	SLAB ON GRADE
CAP	CATCH BASIN & LEADS	OVERLAND FLOW DIRECTION
STREET CATCHBASIN & LEAD	CATCH BASIN & LEAD	EXTERNAL OVERLAND FLOW DIRECTION
INLET CATCHBASIN WITH CLOSED LID & LEAD	ST. SAN & WM	EMERGENCY OVERLAND FLOW DIRECTION
STORM MAINTENANCE HOLE	TEE CATCHBASIN	TACTILE WALKING SURFACE INDICATOR (AS PER CITY OF OTTAWA STD. SC6, SC7, SC7.1, SC7.2, SC7.3)
CURB INLET CATCHBASIN & LEAD	PERFORATED PIPE	PREVIOUS PHASES
CATCHBASIN/ MAINTENANCE HOLE INTERCONNECTED	DITCH AND CULVERT	EXISTING SANITARY MAINTENANCE HOLE
CAP	36.0m-250# INFILTRATION TRENCH (TYP.), SEE DETAIL ON DRAWING 4.	EXISTING STORM MAINTENANCE HOLE
CURB STOP	HYDRO TRANSFORMER	GROUNDWATER LEVEL PER PATTERSON GROUP DWG. P0009-10
SINGLE SERVICE LOCATION (ST, SAN & WM)	RETAINING WALL (SEE NOTES ON DWG. 1 AND STRUCTURAL DWG'S FOR DETAIL)	

**NOT FOR CONSTRUCTION**

**TOPOGRAPHIC INFORMATION**  
 TOPOGRAPHIC INFORMATION PROVIDED BY J.D. BARNES LIMITED  
 PROJECT No. 16-10-116-00, SURVEYS DATED NOVEMBER 30, 2017.  
 PROJECT No. 16-10-116-00\_PH2, SURVEYS DATED SEPTEMBER 27, 2019.  
 PROJECT No. 22-10-030-01, SURVEYS DATED JUNE 21, 2023.

**SITE PLAN INFORMATION**  
 SITE PLAN PROVIDED BY Q4 ARCHITECTS, DATED ON AUGUST 6, 2024.

**ELEVATION NOTE**  
 ELEVATIONS ARE GEODETIC AND ARE DERIVED FROM SITE BENCHMARK NCC CONTROL POINT 001196530229.  
**ELEVATION = 86.12 m**

1	S.L.M.	2024-08-30	1st SUBMISSION
No.	BY	DATE	DESCRIPTION

**CITY OF OTTAWA**

PROJECT No. 24-1403

**S. L. MERRICK**  
 LICENSED PROFESSIONAL ENGINEER  
 100186523  
 24-08-30  
 PROVINCE OF ONTARIO

**CAIVAN (ORLEANS VILLAGE 2) LTD.**

**ORLEANS VILLAGE PHASE 4**

**DSEL**

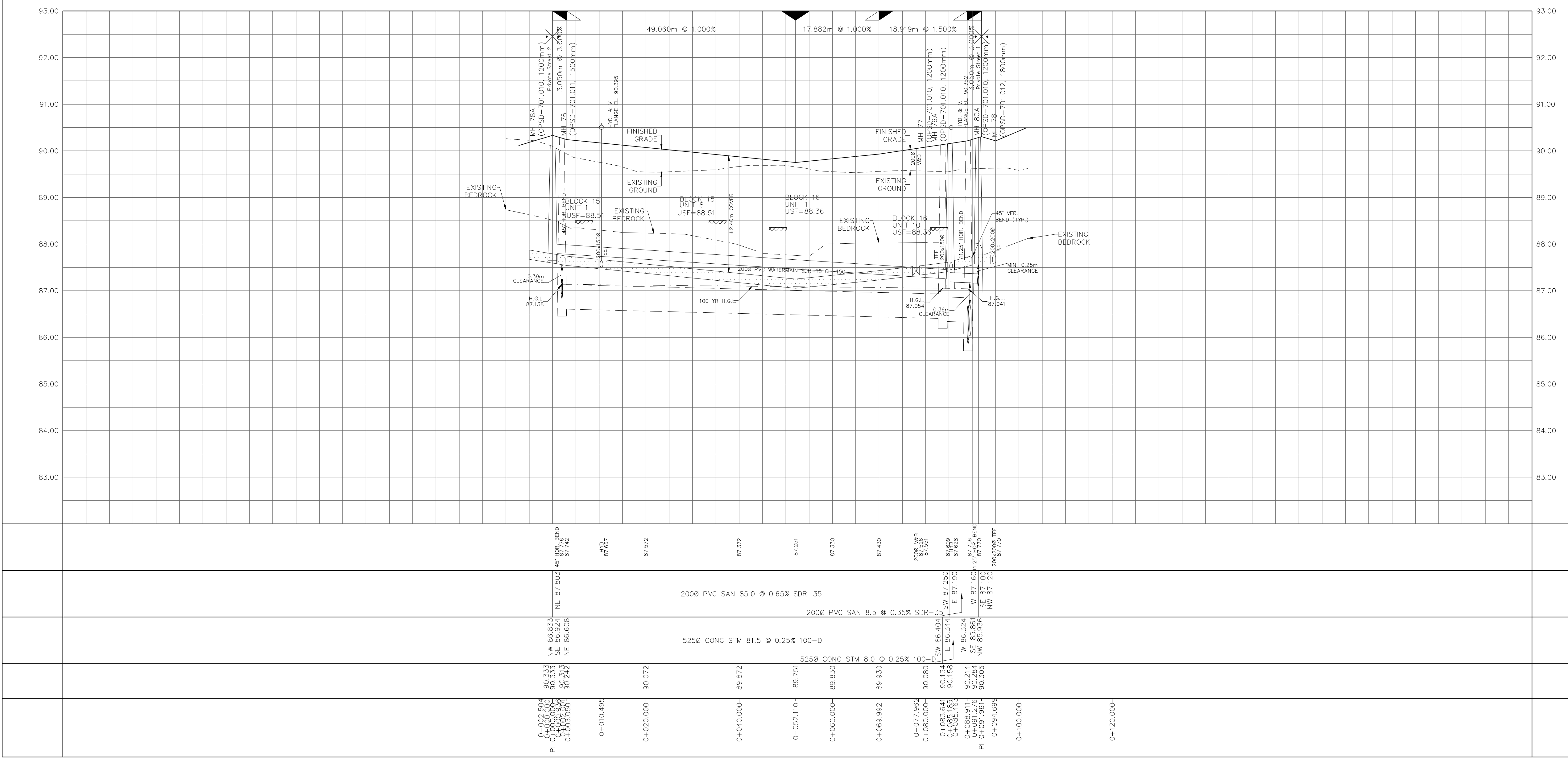
120 Iler Road, Unit 103  
 Stittsville, ON K2S 1E9  
 Tel: (613) 836-0856  
 Fax: (613) 836-7153  
 www.DSEL.ca

**Private Street 3**

© DSEL

**STA. 0+10.000 TO STA. 0+101.961**

DRAWN BY:	C.P.B.	CHECKED BY:	S.L.M.	SHEET NO.
DESIGNED BY:	C.P.B.	CHECKED BY:	S.L.M.	11 OF 25
SCALE:	1:500	DATE:	AUGUST 2024	



CITY PLAN No. ####  
CITY FILE No. ####