

\*\*\*\*\*ADDITIONAL LANDSCAPE PLAN NOTES\*\*\*\*\*  
 LANDSCAPING ON CITY OF OTTAWA PROPERTY TO BE TO CITY OF OTTAWA DETAILS / STANDARDS. L1-L6, L17  
 TREES ON CITY OF OTTAWA PROPERTY TO CARRY A 2 YEAR WARRANTY.  
 REFER TO SITE PLAN FOR LOCATIONS AND DIMENSIONS OF BUILDING, ROADS, PARKING, CURBS, SETBACKS,  
 EASEMENTS, LEGAL DESCRIPTION.  
 EXISTING AND PROPOSED SITE SERVICING IS SHOWN ON THE LANDSCAPE PLAN TO PROVIDE AN AWARENESS TO  
 REVIEWERS AND CONTRACTORS OF THEIR INTENDED LOCATION AND SEPARATION OF TREES/SERVICES/PROPOSED  
 LANDSCAPING. DETERMINE AS BUILT LOCATIONS OF SERVICES PRIOR TO PLANTING AND ADJUST ACCORDINGLY TO  
 REQUIRED SETBACKS

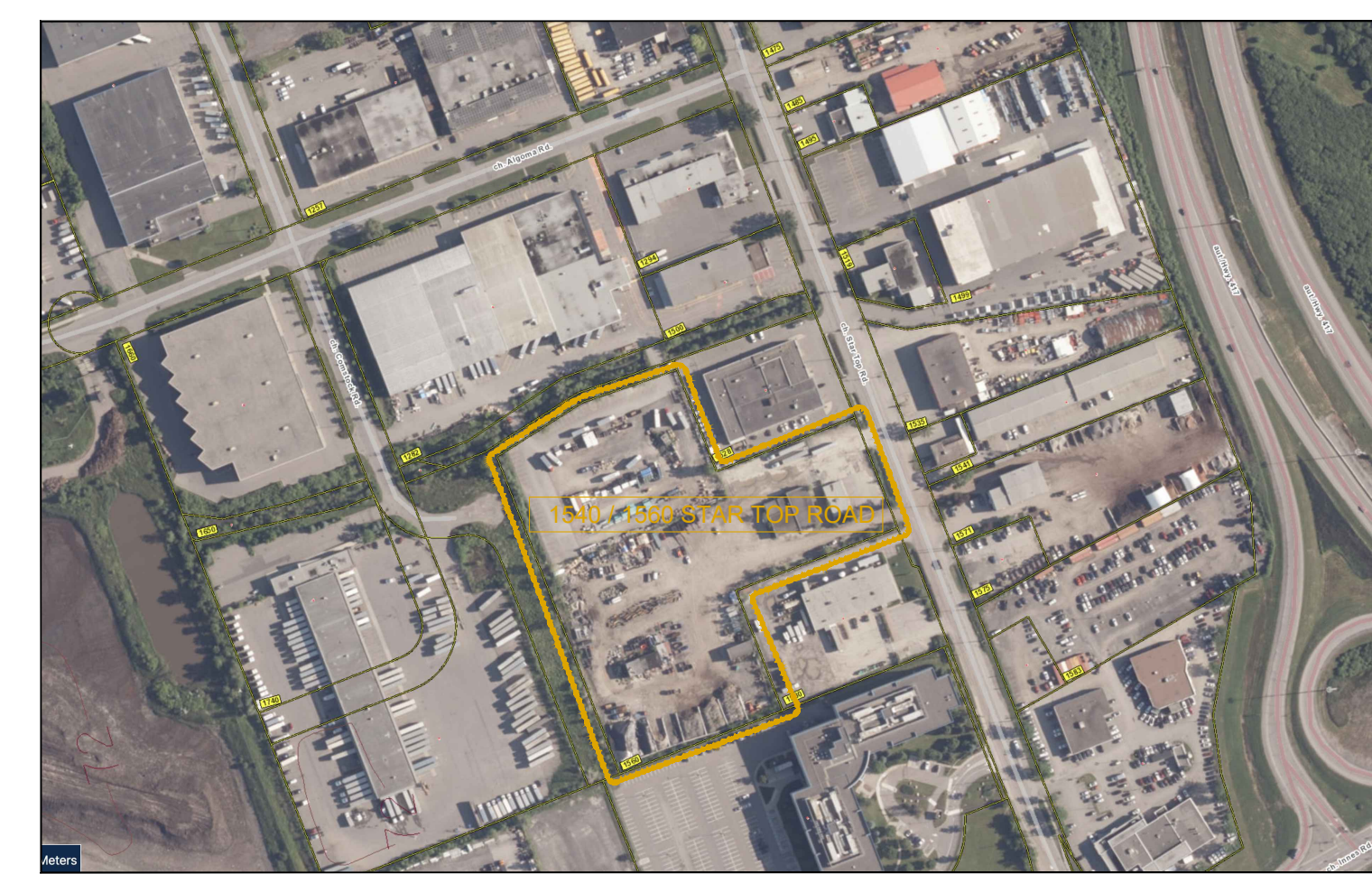
**CONSULTANT TEAM**

DESIGN BUILDER: BBS CONSTRUCTION INC.	(613) 228-8630
ARCHITECT: DESIGNING ARCHITECTURE & INTERIOR DESIGN	(613) 697-6113
TRANSFORMATION, PLANNING AND CIVIL: MONTOSH PERRY CONSULTING ENGINEERS	(613) 836-2154
LANDSCAPE ARCHITECT: GJA INC.	(613) 286-5130
GEOTECHNICAL AND ENVIRONMENTAL: PATERSON GROUP INC.	(613) 226-7381
SURVEYOR: MONTOSH PERRY SURVEYING INC.	(613) 287-6524
ENVIRONMENTAL PLANNING: MUNCASTER ENVIRONMENTAL PLANNING INC.	(613) 748-3753

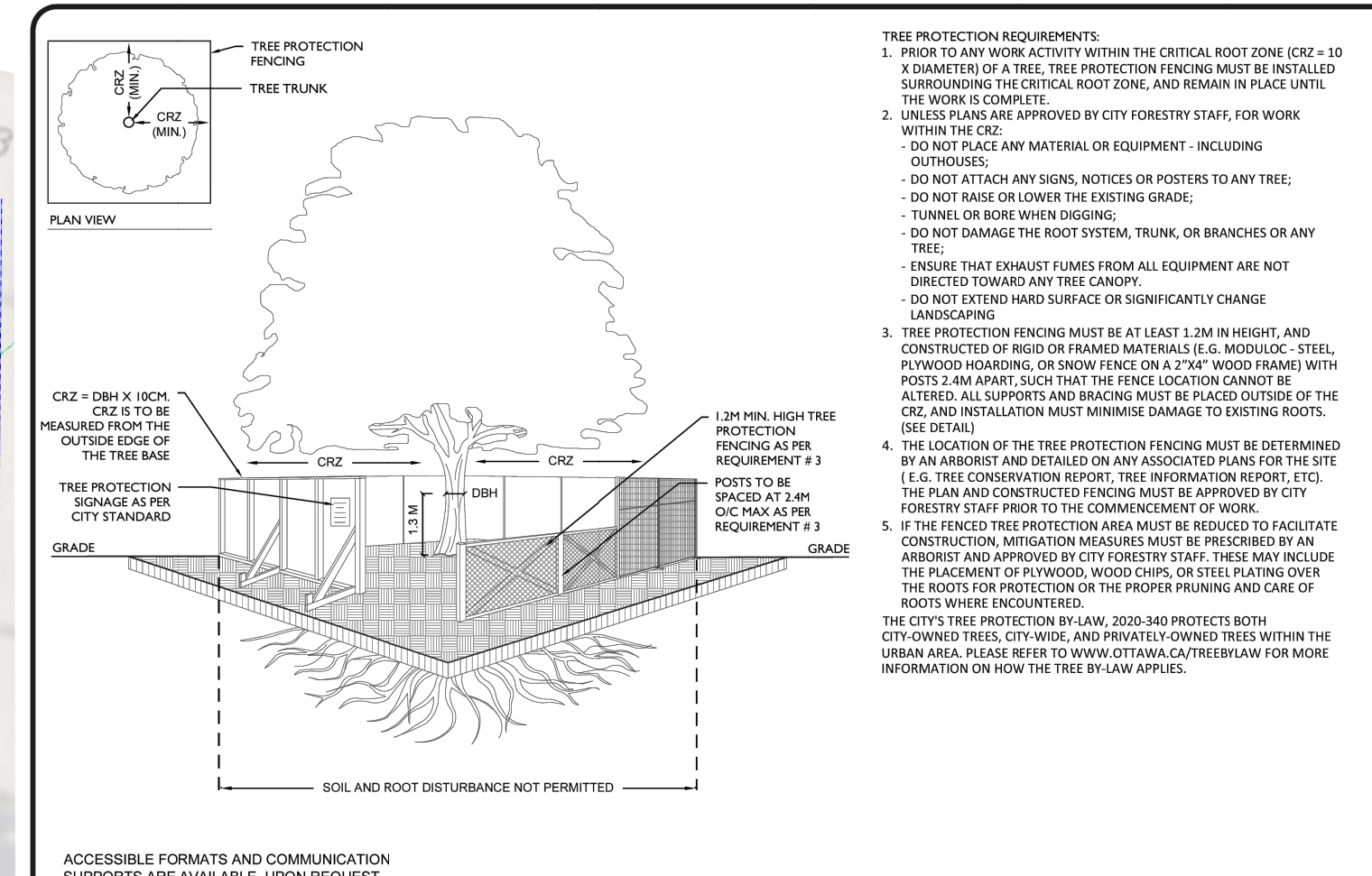
**CITY OF OTTAWA  
LANDSCAPING STANDARD DETAIL DRAWINGS**

**TABLE OF CONTENTS**

1.0	Planting Symbols and Codes
2.0	Planting Details
3.0	Planting Specifications
4.0	Planting Schedule
5.0	Planting in Planting Bed
6.0	Planting in Mulch
7.0	Planting in Concrete
8.0	Planting in Soil
9.0	Planting in Gravel
10.0	Planting in Sand
11.0	Planting in Rock
12.0	Planting in Asphalt
13.0	Planting in Concrete Slab
14.0	Planting in Concrete Wall
15.0	Planting in Concrete Foundation
16.0	Planting in Concrete Footing
17.0	Planting in Concrete Pier
18.0	Planting in Concrete Column
19.0	Planting in Concrete Beam
20.0	Planting in Concrete Slab on Grade
21.0	Planting in Concrete Slab on Foundation
22.0	Planting in Concrete Slab on Piers
23.0	Planting in Concrete Slab on Columns
24.0	Planting in Concrete Slab on Walls
25.0	Planting in Concrete Slab on Foundations
26.0	Planting in Concrete Slab on Foundations
27.0	Planting in Concrete Slab on Foundations
28.0	Planting in Concrete Slab on Foundations
29.0	Planting in Concrete Slab on Foundations
30.0	Planting in Concrete Slab on Foundations



Drawing Remains the Property of Copyright Reserved by GJA INC. Do Not Use or Reproduce Without Approval of Gino J. Aiello.  
**Contractor is Responsible** for Verification of Site Locations of all Utilities. Report any Discrepancies Between Site and Drawing Immediately to Gino J. Aiello. Do NOT Proceed Until Clarified.  
 TURF AREAS TO BE 500 CW 150MM DEPTH TOPSOIL ON APPROVED SUBGRADE | SOD TO BE #1 GRADE TURFGRASS NURSERY SOD per NSGA - Fine Fescue/Kentucky Bluegrass Sod | PLANTING MIX TO BE APPROVED BY LANDSCAPE ARCHITECT | PLANT MATERIAL TO MEET CAN1 STD 2008/2015/2016 APPROVED BY LANDSCAPE ARCHITECT PRIOR TO PLANTING | ALL MATERIALS & WORK TO BE MAINTAINED UNTIL FINAL ACCEPTANCE. (MOWING TURF, WEEDING BEDS, WATERING TURF & PLANTS) & INCLUDE 1 YEAR WARRANTY FROM DATE OF FINAL ACCEPTANCE | PROVIDE WATERING OF ALL PLANT MATERIAL AS REQUIRED FOR PROPER ESTABLISHMENT, UNTIL END OF WARRANTY PERIOD | REFER TO CIVIL ENGINEER'S DRAWING FOR ELEVATIONS / GRADING |  
 The Landscape Plan is to be read in conjunction with the grading, servicing, site and survey plan | Bare root material to be planted in season only | All plant material locations to be staked on site by the landscape contractor and checked by the landscape architect prior to planting | All trees to be preserved or directly adjacent to the site will be protected | Plant material are to be installed a minimum of 3.0m away from any part of any hydro transformer, 3.0m corridor between a fire hydrant and the curb, a 2.5m radius beside or behind a fire hydrant, 2.0m from any servicing/utility line or structure |  
 THIS SITE PLAN HAS BEEN BASED ON THE SURVEYOR'S PLAN OF SURVEY PREPARED BY MONTOSH PERRY SURVEYING INC. DATED JUNE 15th, 2023.  
**PIN 04263-0186(L1)**  
**LEGAL DESCRIPTION:**  
 PART OF LOT 25, CONVESSION 2 (OTTAWA FRONT)  
 GEOGRAPHIC TOWNSHIP OF GLOUCESTER  
 CITY OF OTTAWA



**Ottawa**

**TREE PROTECTION SPECIFICATION**

TO BE IMPLEMENTED FOR RETAINED TREES, BOTH ON-SITE AND ON ADJACENT SITES, PRIOR TO ANY TREE REMOVAL OR SITE WORKS AND MAINTAINED FOR THE DURATION OF WORK ACTIVITIES ON-SITE.

SCALE: NTS  
 DATE: MARCH 2021  
 DRAWING NO.: 1 of 1

**TREE SCHEDULE - BBS CONSTRUCTION 1540 / 60 STARTOP ROAD BOONE WAREHOUSE**

CODE	QTY	BOTANICAL NAME	COMMON NAME	B&B SPECIMEN	SPREAD	NATIVE
AR	8	Acer rubrum	Red Maple	50mm cal	12M	YES
AS	8	Acer saccharum	Sugar Maple	50mm cal	15M	YES
AG	3	Aesculus glabra	Ohio Buckeye	50mm cal	10M	YES
BP	1	Betula papyrifera	Paper Birch	50mm cal	10M	YES
CO	7	Celtis occidentalis	Common Hackberry	50mm cal	18M	YES
GD	3	Gymnocladus dioica	Kentucky Coffee Tree	50mm cal	12M	YES
QM	2	Quercus macrocarpa	Bur Oak	50mm cal	20M	YES
QR	6	Quercus rubra	Red Oak	50mm cal	15M	YES
<b>TOTALS</b>	<b>38</b>	<b>4</b>				
AB	1	Abies balsamea	Balsam Fir	1.5m Ht.	N/A	YES
JV	5	Juniperus virginiana	Eastern Red Cedar	1.5m Ht.	N/A	YES
LL	1	Larix laricina	Eastern Larch / Tamarack	1.5m Ht.	N/A	YES
PS	1	Pinus strobus	White Pine	1.5m Ht.	N/A	YES

**RIPARIAN PLANTING PER EIS BOONE WAREHOUSE STARTOP**

Code	Qty.	Botanical Name	Common Name	Size	Condition	NATIVE
ac	5	Amelanchier canadensis	Tree Serviceberry	1.0m Ht.	Pot	YES
as	5	Acer saccharum	Sugar Maple	1.0m Ht.	Pot	YES
cr	5	Cornus racemosa	Grey Dogwood	1.0m Ht.	Pot	YES
vt	5	Viburnum lentago	Nannyberry	1.0m Ht.	Pot	YES
ta	5	Tilia americana	Basswood	1.0m Ht.	Pot	YES
ab	5	Abies balsamea	Balsam Fir	0.5m Ht.	Pot	YES
pg	5	Picea glauca	White Spruce	0.5m Ht.	Pot	YES

**SHRUBS BOONE WAREHOUSE STARTOP**

Code	Qty.	Botanical Name	Common Name	Size	Condition	Condition
HK	75	Hypericum kalmianum	Kalm St. John's Wort	30cm	Pot	YES
HP	400	Hypericum prolificum	Shrubby St. John's Wort	40cm	Pot	YES
RP	350	Rosa palustris	Swamp Rose	50cm	Pot	YES
SA	150	Spiraea alba	Meadowsweet	60cm	Pot	YES

**TCR - REFER TO REPORT BY IFS**

Existing Tree to Remain  
 Existing Tree to Remove  
 Protection for Existing Trees

**LANDSCAPE PLAN LEGEND**

Coniferous Tree symbol 3.0m diameter  
 Deciduous Tree symbol 6.0m diameter  
 40 Year Outlook according to Michael A. Dirr, Manual of Woody Landscape Plants  
 Planting Bed  
 Shrub Planting Bed  
 Turf  
 Concrete Monolithic Curb  
 Concrete  
 Retaining Wall  
 Fence  
 Bike Rack Anchor to Concrete  
 Fire Hydrant  
 FD Siamese Connection  
 Light Standard

**BELOW GRADE SERVICES REFER TO CIVIL/CUP**

WTR U/G Water Service  
 STM U/G Storm Service  
 SAN U/G Sanitary Service  
 GAS U/G Gas Service  
 BC U/G TelCo Service  
 H U/G Hydro Service  
 OHW O/H Hydro Service

PROPERTY LINE  
 EASEMENT LINE

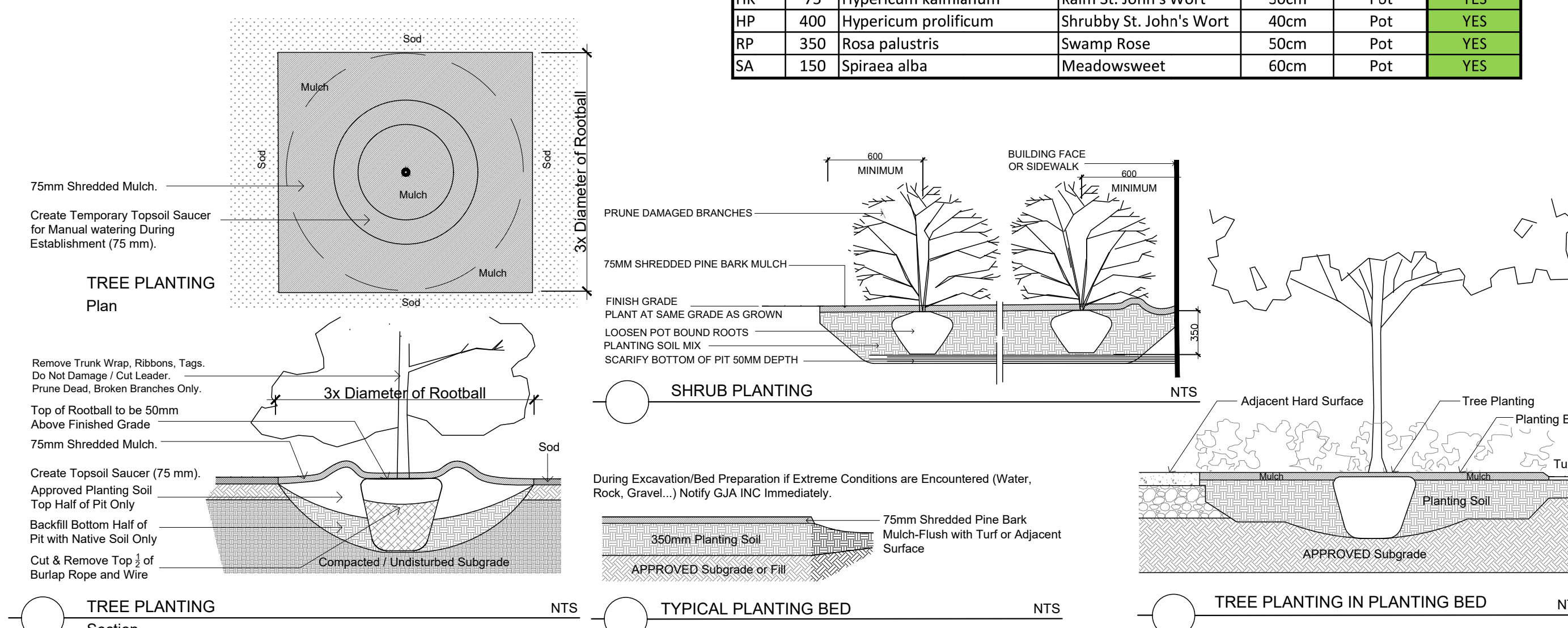
ORIGINAL DATE OF PLAN 2023 0701

**Circum Bicycle Rack**  
 PS-76-101-TP - Circum Bike Rack

Our Circum Bicycle Rack features a welded tubular and flat-bar steel construction. It is available in your choice of Hauser's TOTE powdercoat finishes or Hauser's HLED Thermoplast finishes.

Depth: 2' (61 cm)  
 Diameter: 24" (61 cm)  
 Height: 33" (83 cm)  
 Weight: 21.2 lbs (9.6 kg)

**HAUSER SITE FURNITURE**  
 sales@hausersite.com  
 800-268-7328  
 hausersite.com



**5 LATEST** 2024 08 15  
**4 SPC SUBMISSION 3** 2024 04 15  
**3 SPC SUBMISSION 3** 2023 12 18  
**2 SPC SUBMISSION 2** 2023 11 13  
**1 SPC SUBMISSION 1** 2023 08 04  
**0 REVIEW/COORDINATION** 2023 07 01

# Revision/Coordination Date

PROPERTY OWNER

**4457315 CANADA INC.**  
 1282 ALGOMA ROAD GLOUCESTER ONTARIO K1B 3W8

**GJA INC.**  
 GINO J. AIELLO | LANDSCAPE ARCHITECT  
 GJALA.COM | 613 286 5130 | GINO@GJALA.COM  
 1150 BURNHAMTHORPE ROAD UNIT # 11, GLOUCESTER ONTARIO K1B 3W8

**NEW WAREHOUSE BOONE**

1540 / 1560 STAR TOP ROAD OTTAWA

**Landscape Plan**  
 Scale: 1:400  
**L1**  
 DWG # 19125