

Copyright Reserved

The Contractor shall verify and be responsible for all dimensions. DO NOT scale the drawings - any errors or omissions shall be reported to Stantec without delay.  
The Copyrights to all designs and drawings are the property of Stantec. Reproduction or use for any purpose other than that authorized by Stantec is forbidden.

Legend

- PROPOSED SILT FENCE BOUNDARY AS PER OPSD 219.110
- PROPOSED STRAW BALE LOCATION AS PER OPSD 219.100
- PROPOSED CATCH BASIN PROTECTION AS PER DETAIL
- PROPOSED MUD MAT LOCATION
- PROPOSED VALVE BOX
- PROPOSED VALVE CHAMBER
- PROPOSED FIRE HYDRANT
- PROPOSED VALVE AND DIMA CHAMBER AS PER CITY STD W3
- PROPOSED SANITARY SEWER MANHOLE
- PROPOSED STORM SEWER MANHOLE
- PROPOSED CATCH BASIN

Notes

Best Management Practices

CONTRACTOR TO PROVIDE EROSION AND SEDIMENT CONTROLS (BEST MANAGEMENT PRACTICES) DURING CONSTRUCTION OF THIS PROJECT. THE CONTRACTOR SHALL IMPLEMENT BEST MANAGEMENT PRACTICES TO PROVIDE PROTECTION OF THE AREA DRAINAGE SYSTEM AND THE RECEIVING WATERCOURSE THROUGHOUT CONSTRUCTION ACTIVITIES. THE CONTRACTOR ACKNOWLEDGES THAT FAILURE TO IMPLEMENT APPROPRIATE EROSION AND SEDIMENT CONTROL MEASURES MAY BE SUBJECT TO PENALTIES IMPOSED BY ANY APPLICABLE REGULATORY AGENCY.

1. LIMIT THE EXTENT OF EXPOSED SOILS AT ANY GIVEN TIME.
2. REVEGETATE EXPOSED AREAS AND SLOPES AS SOON AS POSSIBLE.
3. MINIMIZE AREA TO BE CLEARED AND GRUBBED.
4. PROTECT EXPOSED SLOPES WITH PLASTIC OR SYNTHETIC MULCHES.
5. INSTALL CATCH BASIN INSERTS OR EQUIVALENT IN ALL PROPOSED CATCH BASINS AND CATCH BASIN MANHOLES AND IN ALL EXISTING CATCH BASINS THAT WILL RECEIVE RUN-OFF FROM THE SITE.
6. A SILT FENCE SHALL BE INSTALLED AROUND THE PERIMETER OF ALL AND ANY STOCKPILES OF MATERIAL TO BE USED OR REMOVED FROM THE SITE (LOCATION TO BE DETERMINED).
7. A VISUAL INSPECTION SHALL BE DONE DAILY ON SEDIMENT CONTROL MEASURES AND CLEANED OF ANY ACCUMULATED SILT AS REQUIRED. THE DEPOSITS WILL BE DISPOSED OFF SITE AS PER THE REQUIREMENTS OF THE CONTRACT.
8. SEDIMENT CONTROL BARRIERS MAY ONLY BE REMOVED TEMPORARILY WITH APPROVAL OF CONTRACT ADMINISTRATOR TO ACCOMMODATE CONSTRUCTION OPERATIONS. ALL AFFECTED BARRIERS MUST BE REINSTATED AT NIGHT WHEN CONSTRUCTION IS COMPLETED. NO REMOVAL WILL OCCUR IF THERE IS A SIGNIFICANT RAINFALL EVENT ANTICIPATED (>10mm) UNLESS A NEW DEVICE HAS BEEN INSTALLED TO PROTECT EXISTING STORM AND SANITARY SEWER SYSTEMS, OR DOWNSTREAM WATERCOURSES.
9. NO REFUELING OR CLEANING OF EQUIPMENT IS PERMITTED NEAR ANY EXISTING WATERWAY.
10. CONTRACTOR SHALL REMOVE SEDIMENT CONTROL MEASURES WHEN, IN THE OPINION OF THE CONTRACT ADMINISTRATOR, THE MEASURE(S) IS NO LONGER REQUIRED. NO CONTROL MEASURES SHALL BE PERMANENTLY REMOVED WITHOUT WRITTEN AUTHORIZATION FROM THE CONTRACT ADMINISTRATOR.
11. THE CONTRACTOR SHALL PERIODICALLY, OR WHEN REQUESTED BY THE CONTRACT ADMINISTRATOR, CLEAN UP ACCUMULATED SEDIMENTS AS REQUIRED.
12. THE CONTRACTOR SHALL IMMEDIATELY REPORT TO THE ENGINEER ANY ACCIDENTAL DISCHARGES OF SEDIMENT MATERIAL INTO THE WATERCOURSE. APPROPRIATE RESPONSE MEASURES, INCLUDING ANY REPAIRS TO EXISTING CONTROL MEASURES OR THE IMPLEMENTATION OF ADDITIONAL CONTROL MEASURES, SHALL BE CARRIED OUT BY THE CONTRACTOR WITHOUT DELAY.
13. CONTRACTOR SHALL INSTALL MUD MATS AT ALL CONSTRUCTION ENTRANCES TO THE SITE.
14. STORMWATER SWALES TO BE COVERED WITH HYDRO-SEED AND MULCH.

- 5 REVESED AS PER SITE PLAN AND CITY COMMENTS MJS DT 24.08.06
- 4 REVESED AS PER SITE PLAN AND CITY COMMENTS MJS DT 24.04.08
- 3 REVESED WATERMAIN SIZE MJS DT 22.04.08
- 2 REVESED AS PER CITY COMMENTS MJS TR 21.05.07
- 1 ISSUED FOR REVIEW MJS TR 20.11.23

Revision	By	Appd.	YY.MM.DD
5	MJS	DT	24.08.06
4	MJS	DT	24.04.08
3	MJS	DT	22.04.08
2	MJS	TR	21.05.07
1	MJS	TR	20.11.23

Revision	By	Appd.	YY.MM.DD
5	MJS	AMP	20.08.17
4	MJS	AMP	20.08.17
3	MJS	AMP	20.08.17
2	MJS	AMP	20.08.17
1	MJS	AMP	20.08.17

Revision	By	Appd.	YY.MM.DD
5	MJS	AMP	20.08.17
4	MJS	AMP	20.08.17
3	MJS	AMP	20.08.17
2	MJS	AMP	20.08.17
1	MJS	AMP	20.08.17

Revision	By	Appd.	YY.MM.DD
5	MJS	AMP	20.08.17
4	MJS	AMP	20.08.17
3	MJS	AMP	20.08.17
2	MJS	AMP	20.08.17
1	MJS	AMP	20.08.17

Revision	By	Appd.	YY.MM.DD
5	MJS	AMP	20.08.17
4	MJS	AMP	20.08.17
3	MJS	AMP	20.08.17
2	MJS	AMP	20.08.17
1	MJS	AMP	20.08.17

Revision	By	Appd.	YY.MM.DD
5	MJS	AMP	20.08.17
4	MJS	AMP	20.08.17
3	MJS	AMP	20.08.17
2	MJS	AMP	20.08.17
1	MJS	AMP	20.08.17

Revision	By	Appd.	YY.MM.DD
5	MJS	AMP	20.08.17
4	MJS	AMP	20.08.17
3	MJS	AMP	20.08.17
2	MJS	AMP	20.08.17
1	MJS	AMP	20.08.17

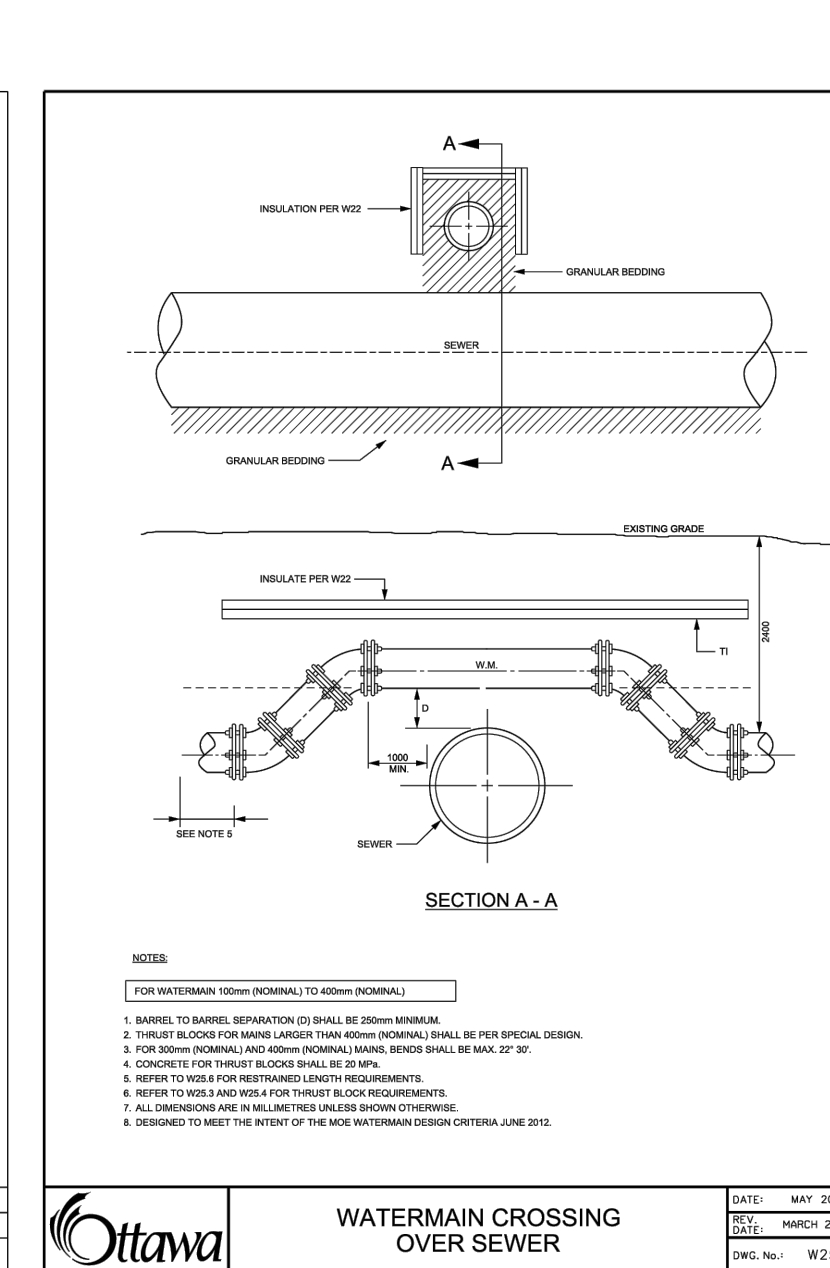
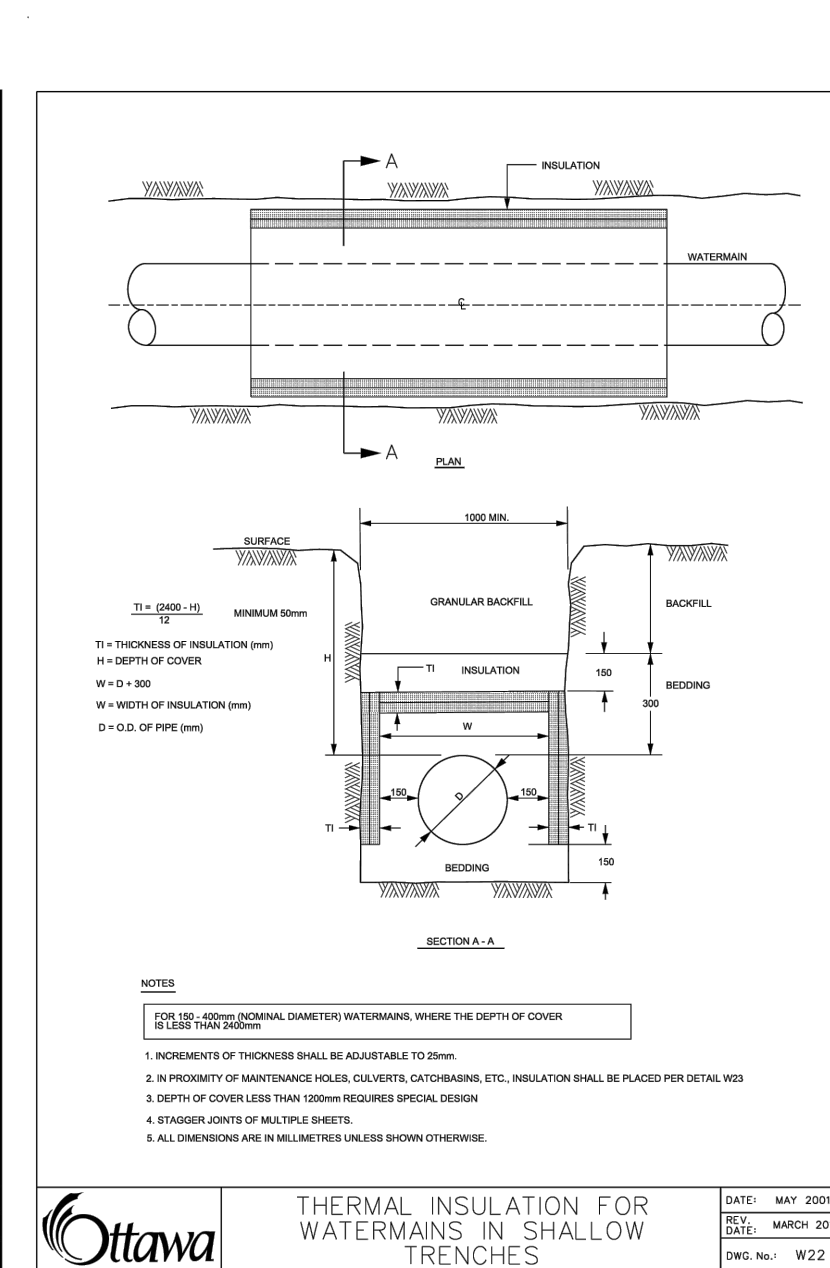
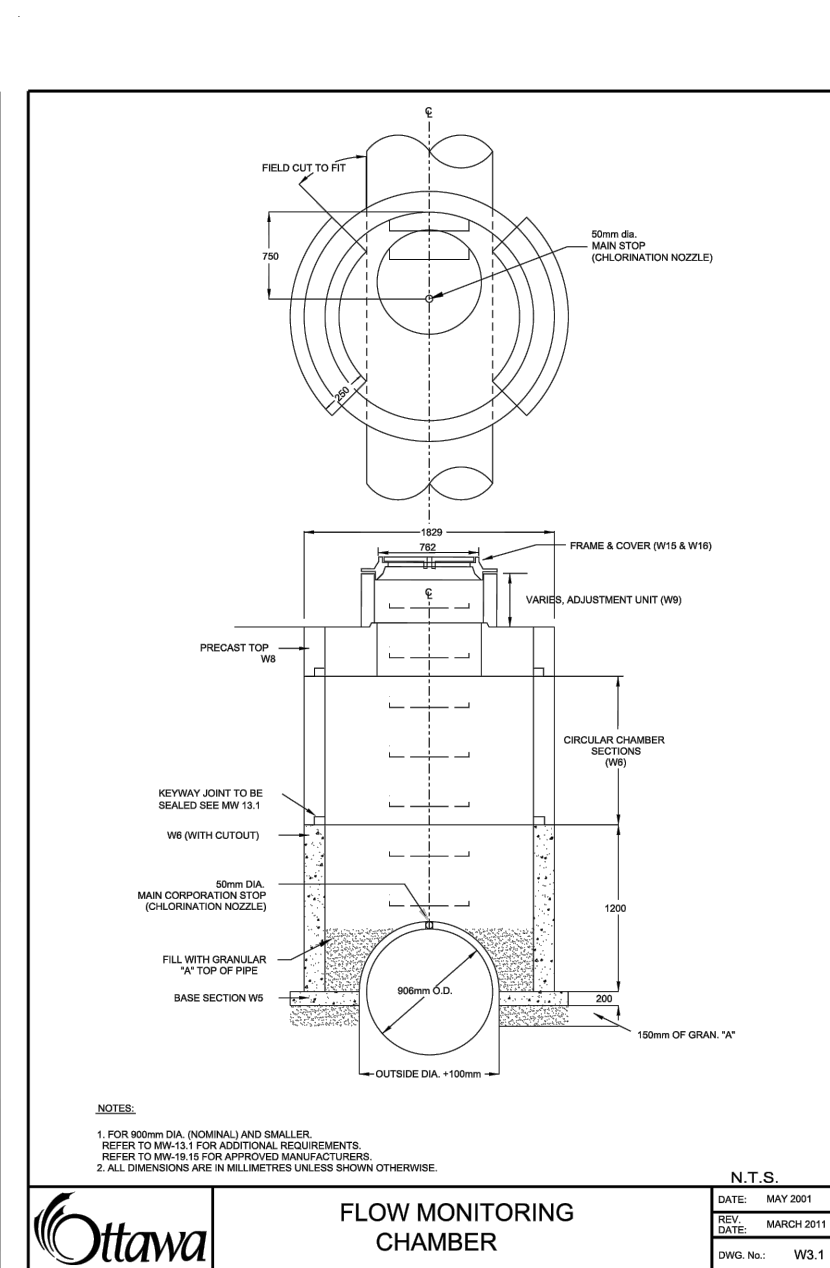
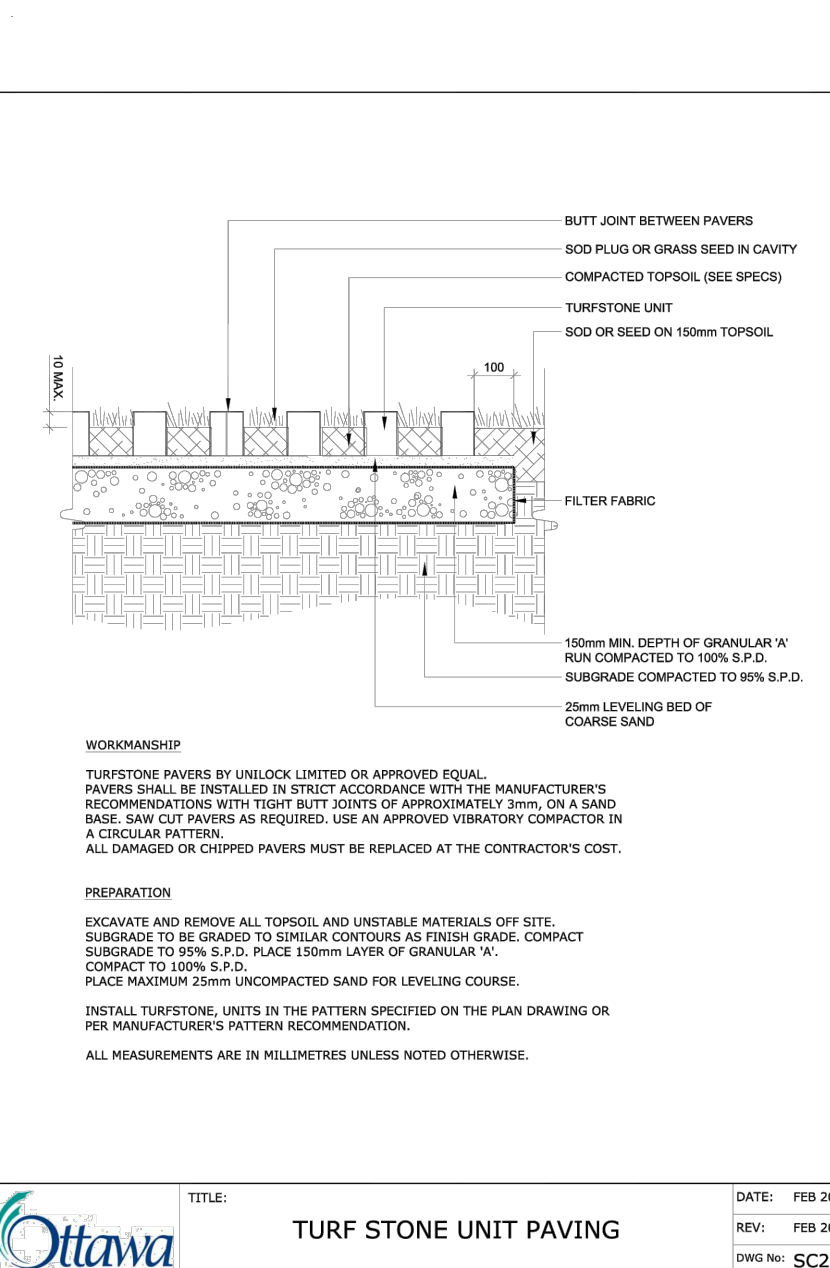
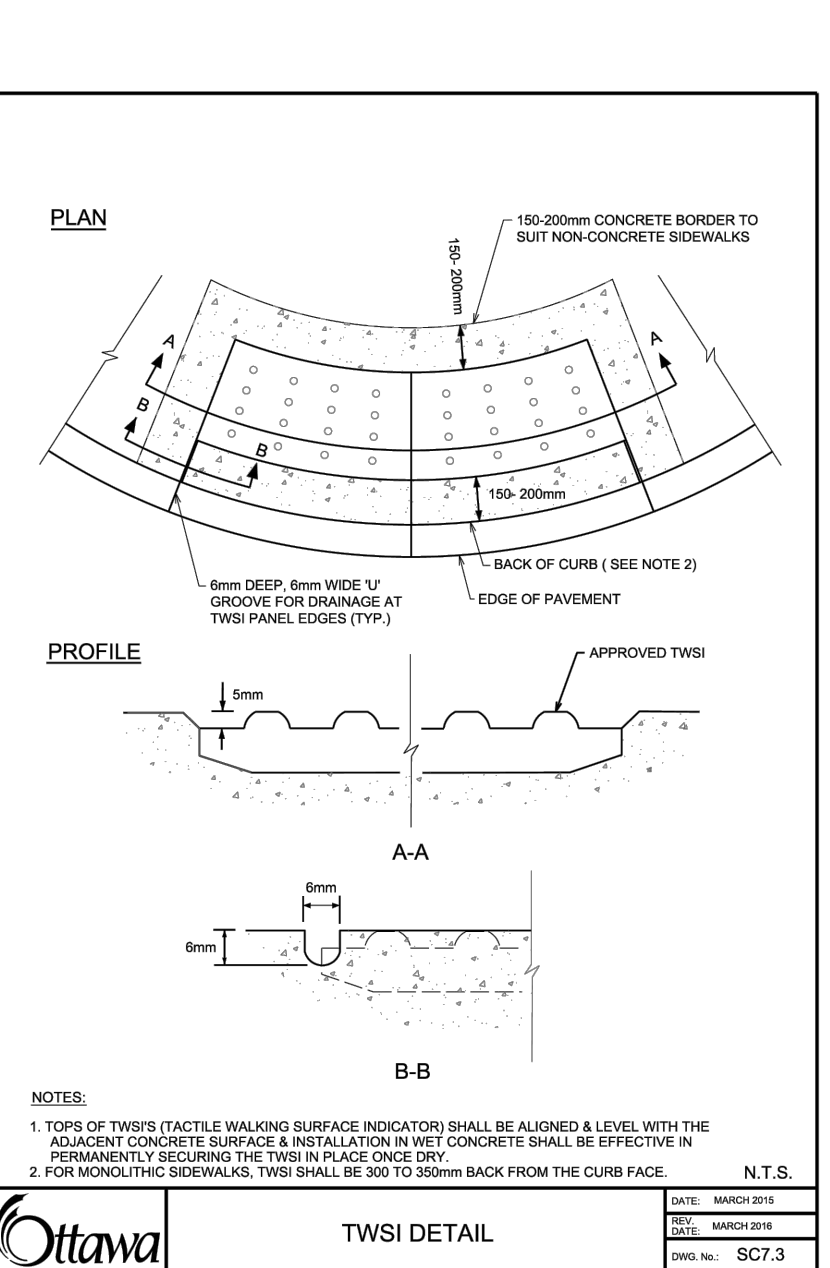
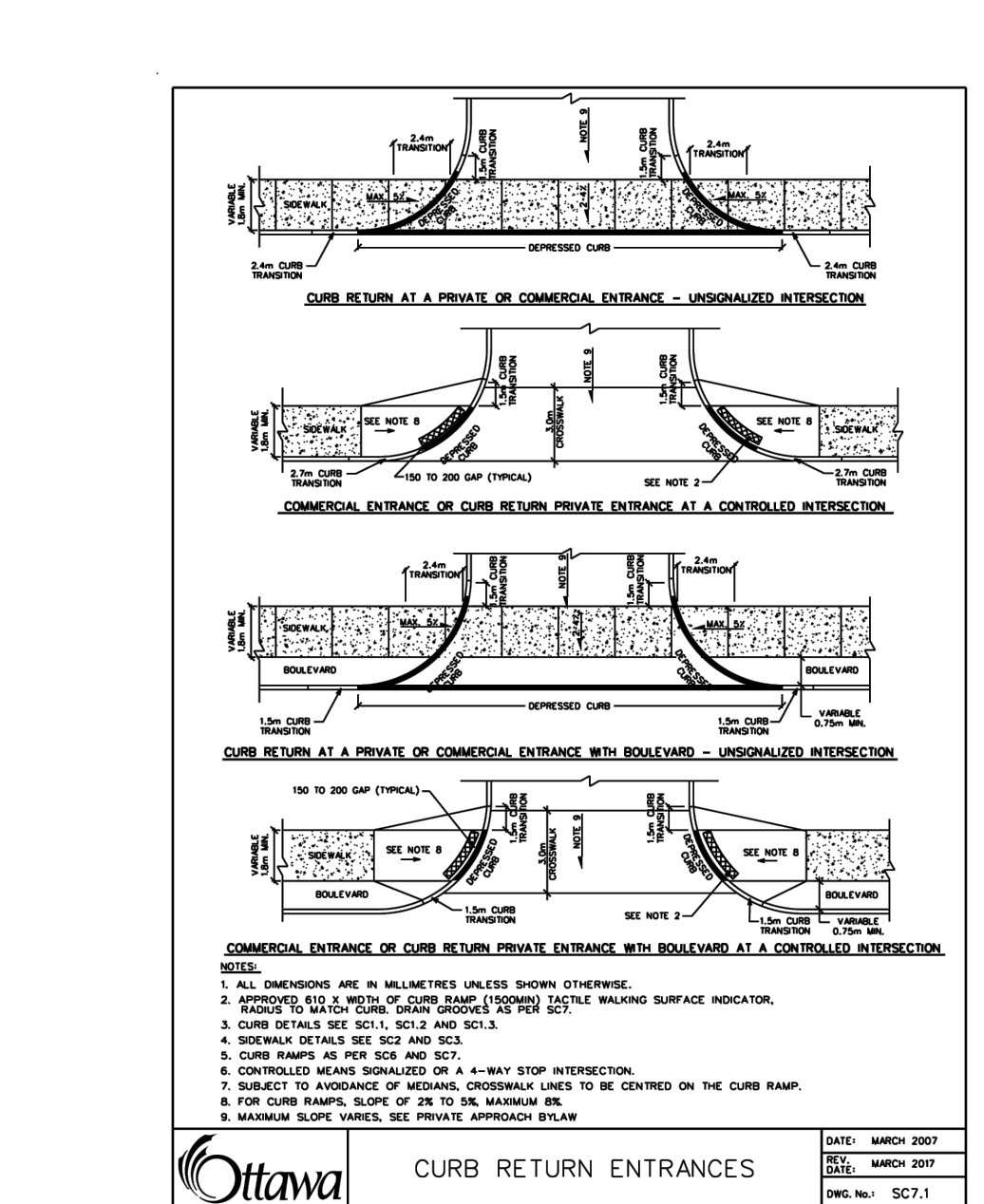
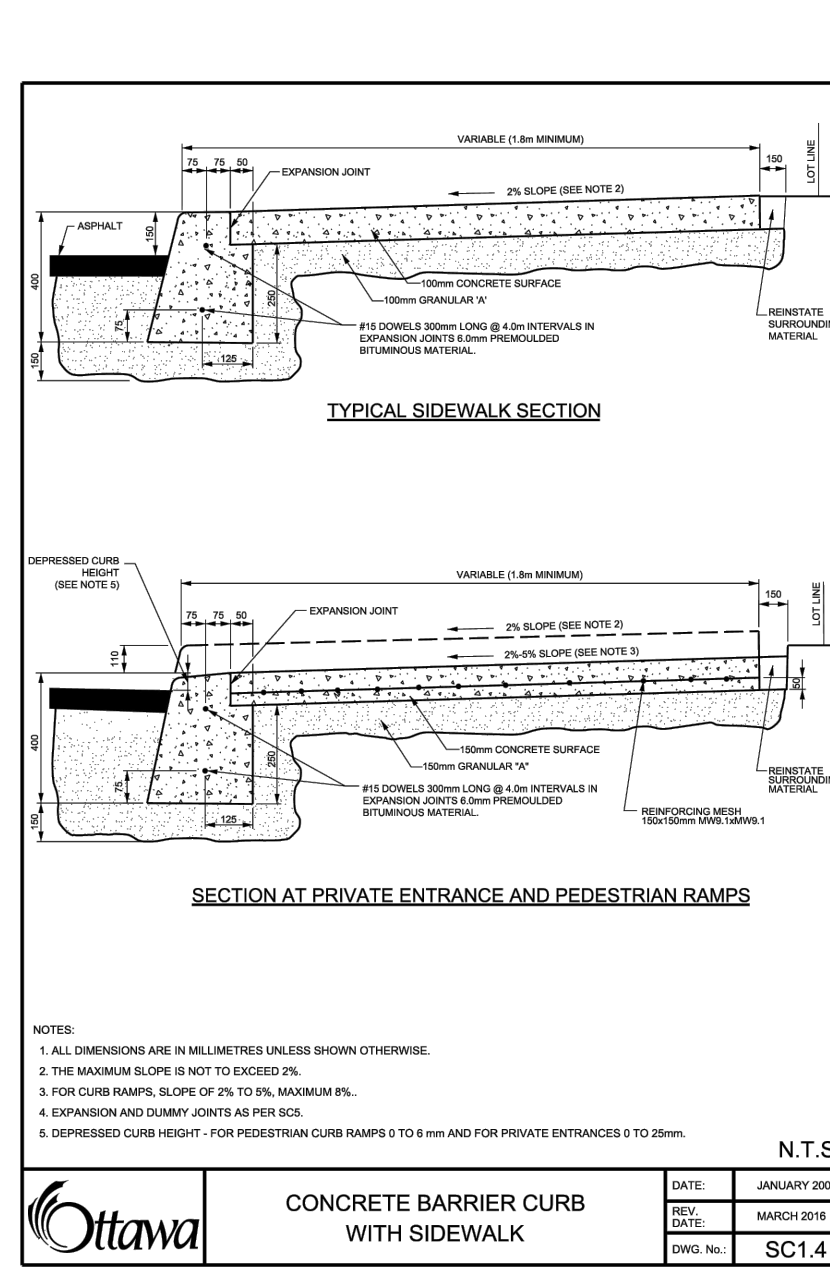
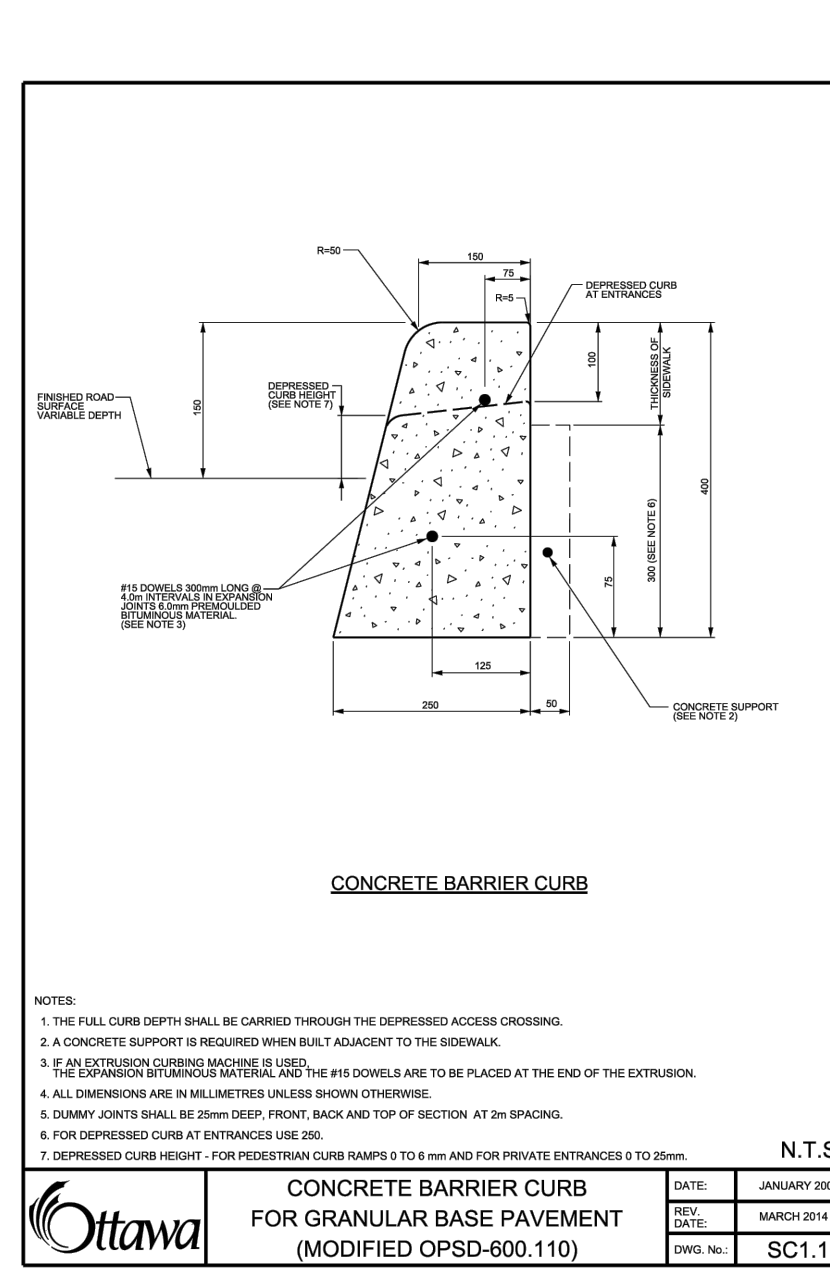
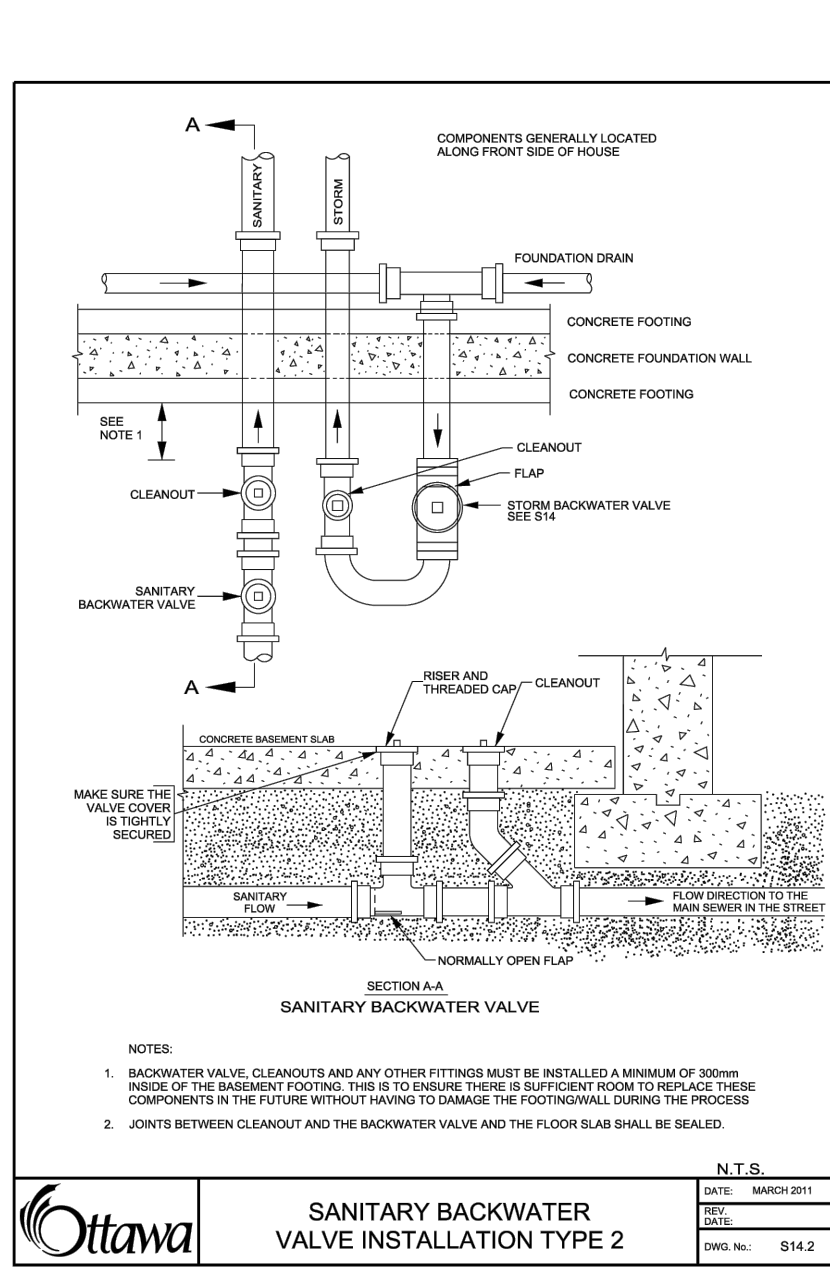
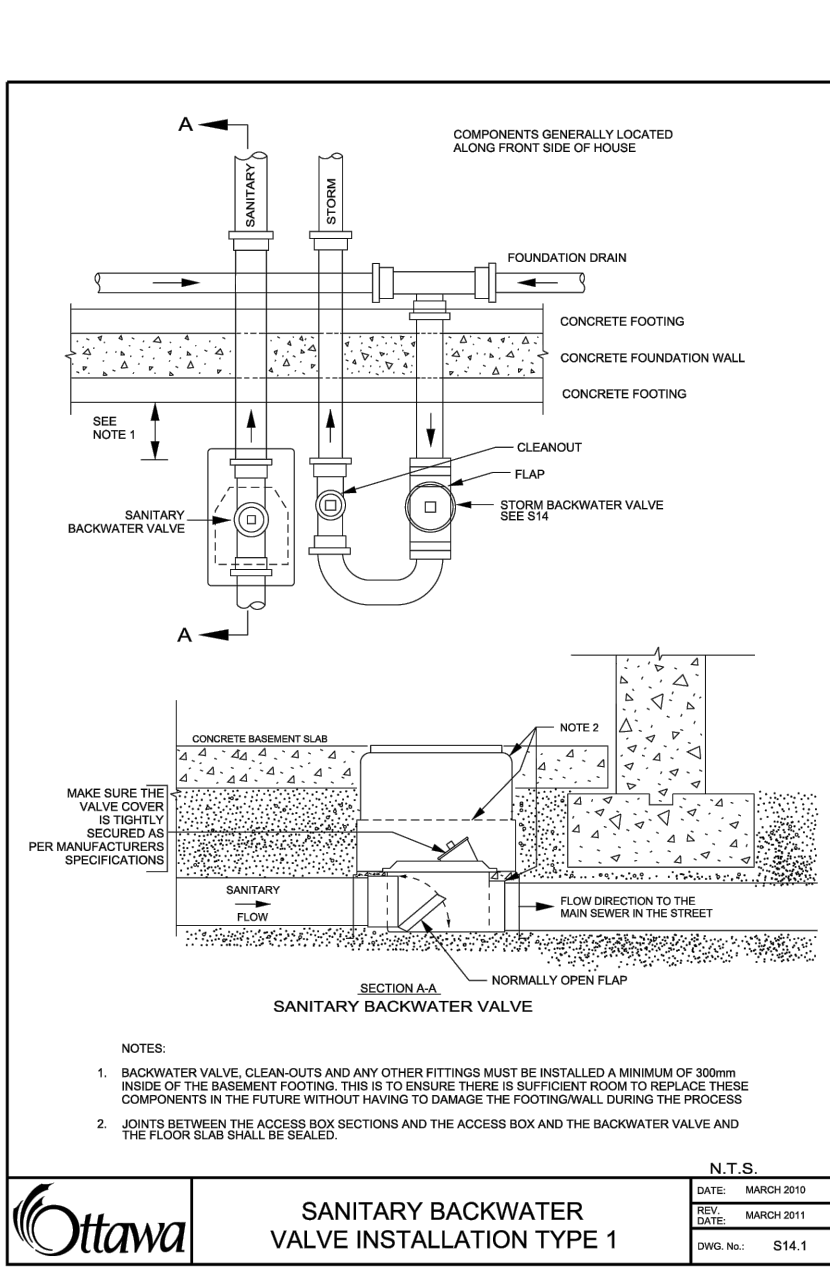
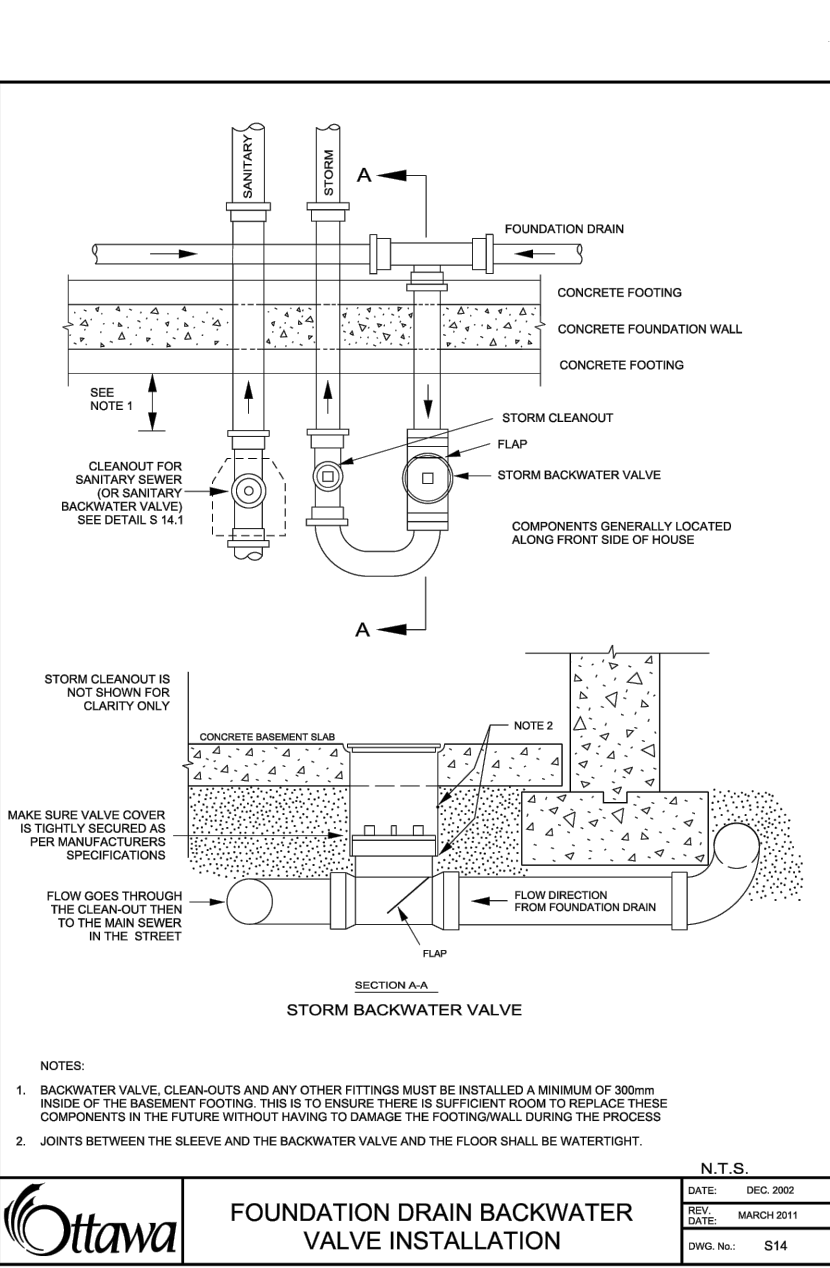
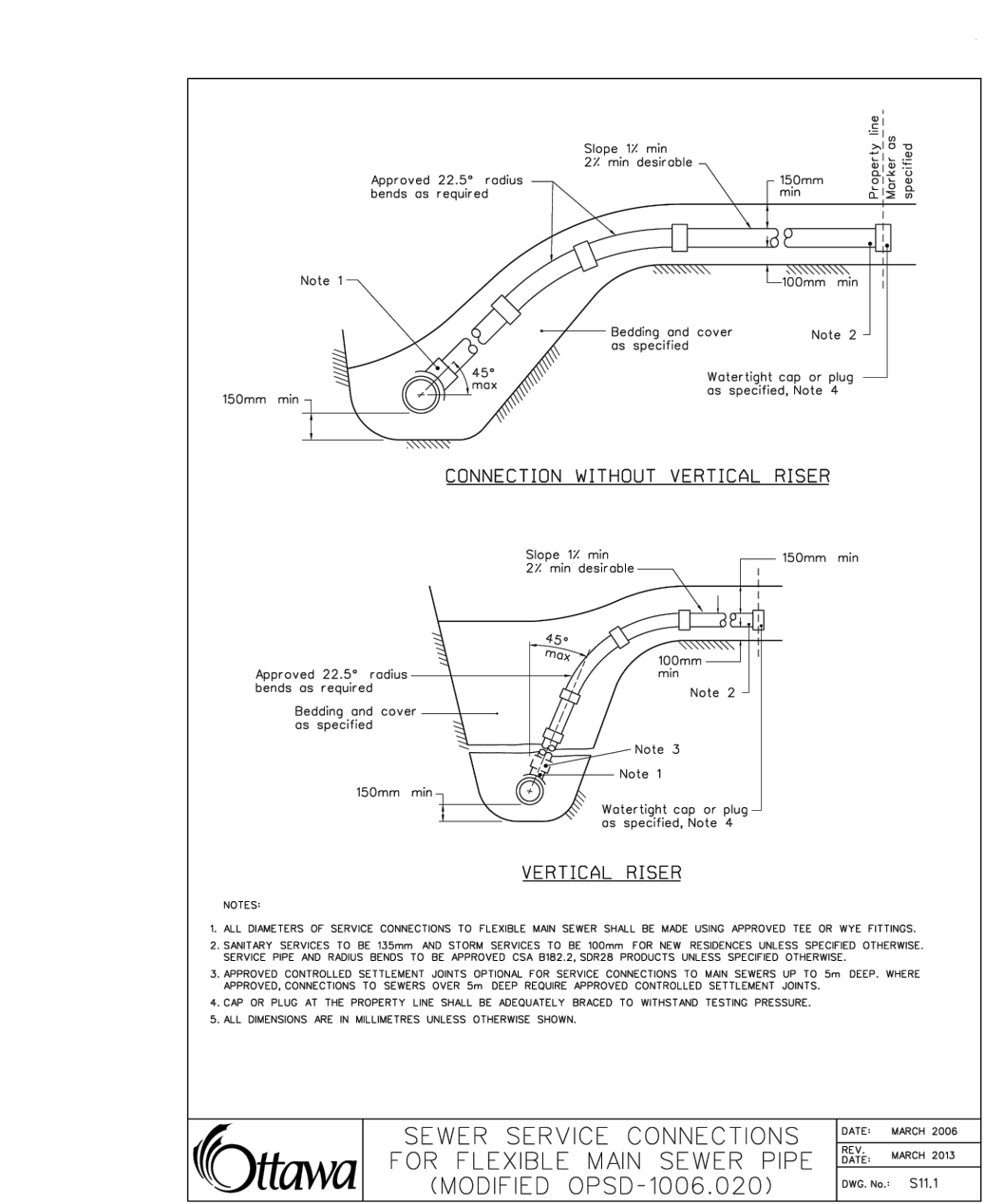
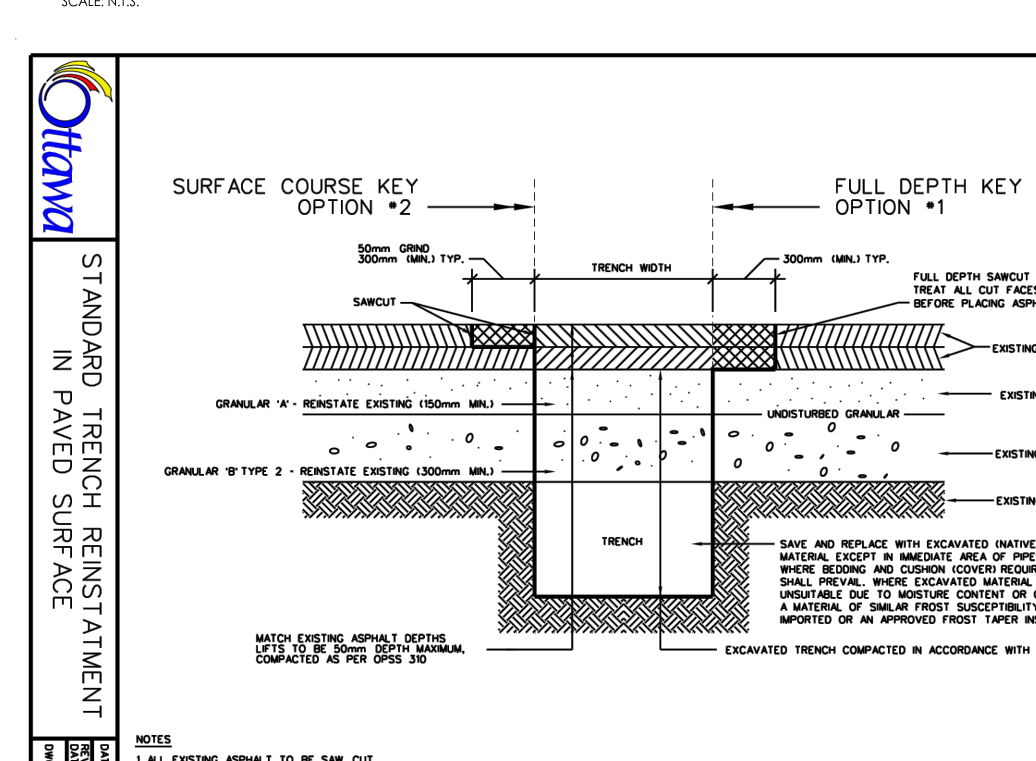
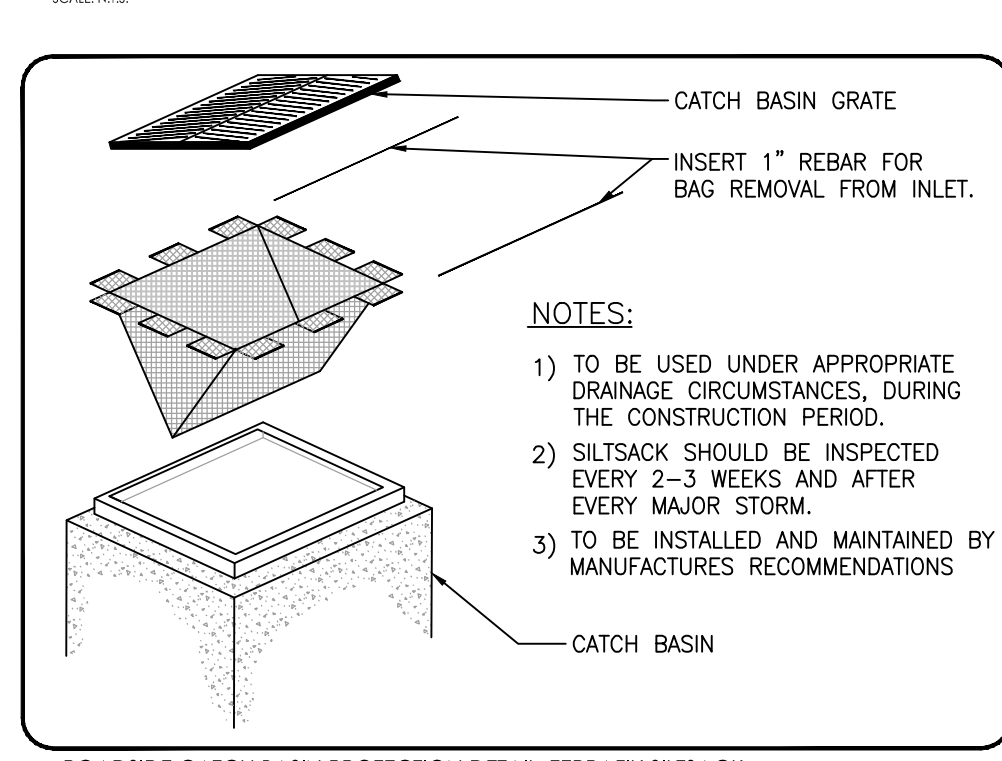
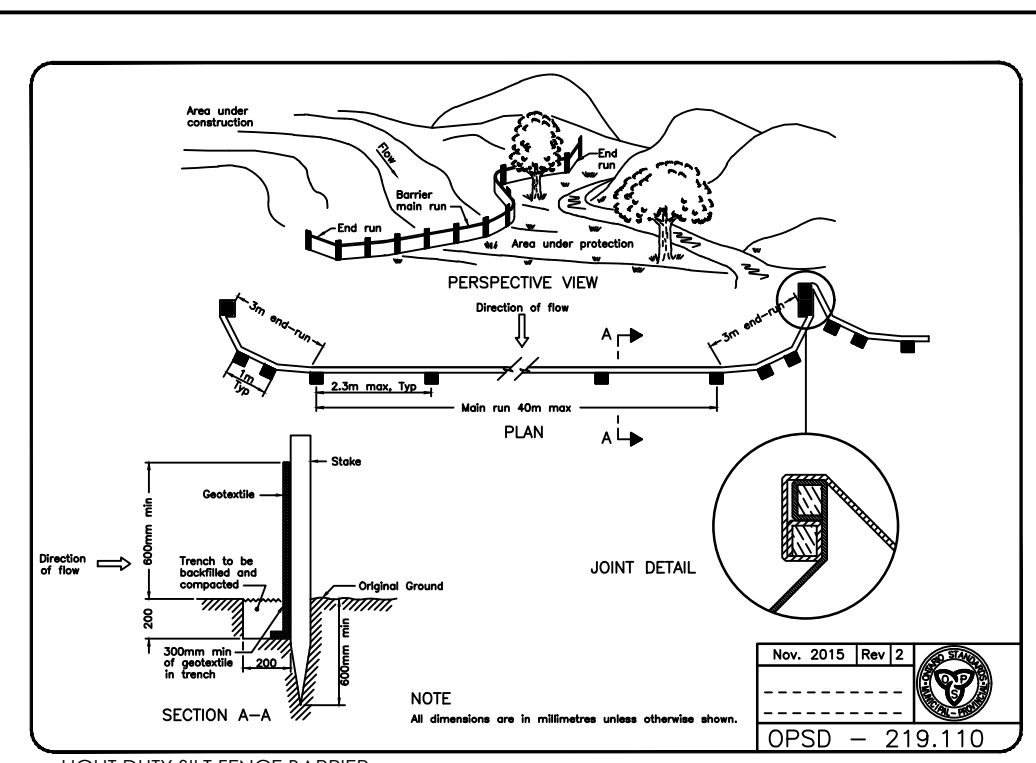
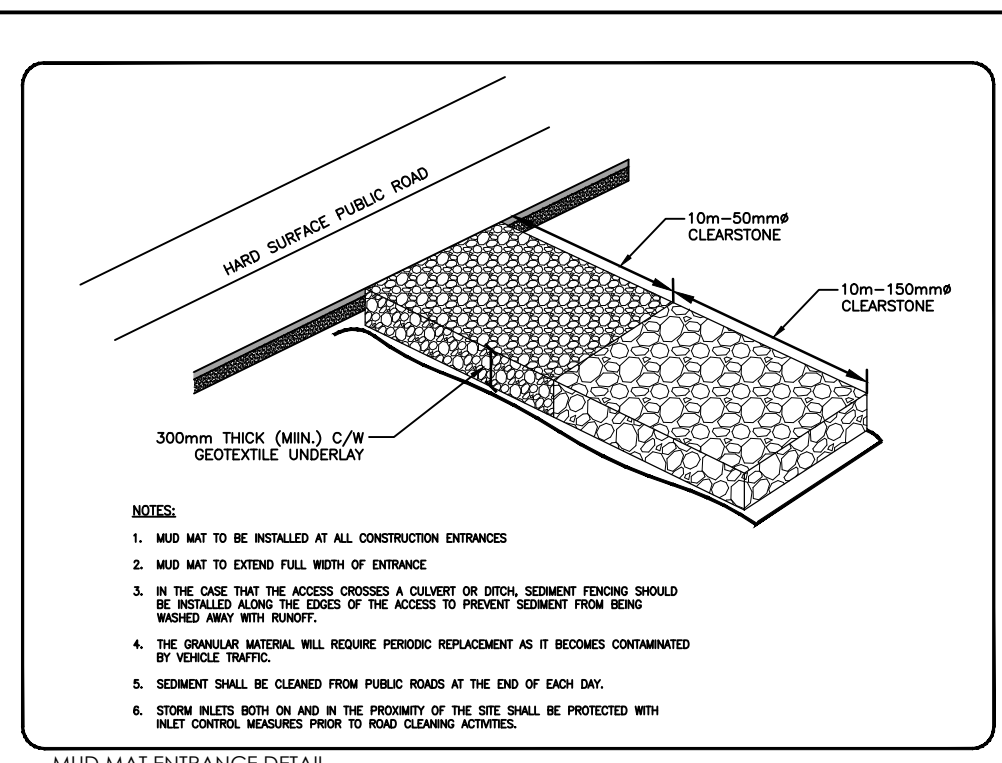
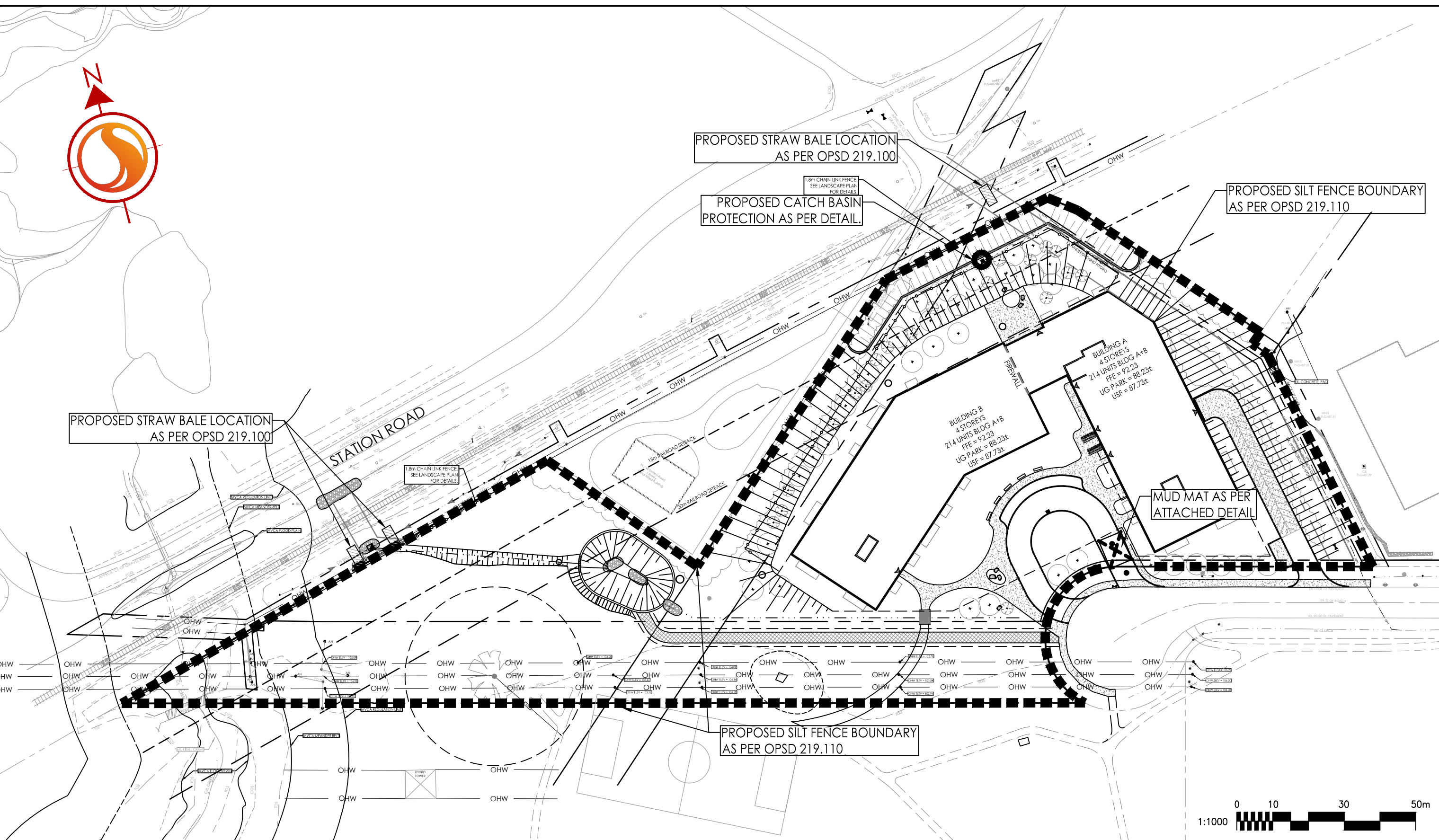
Revision	By	Appd.	YY.MM.DD
5	MJS	AMP	20.08.17
4	MJS	AMP	20.08.17
3	MJS	AMP	20.08.17
2	MJS	AMP	20.08.17
1	MJS	AMP	20.08.17

Revision	By	Appd.	YY.MM.DD
5	MJS	AMP	20.08.17
4	MJS	AMP	20.08.17
3	MJS	AMP	20.08.17
2	MJS	AMP	20.08.17
1	MJS	AMP	20.08.17

Revision	By	Appd.	YY.MM.DD
5	MJS	AMP	20.08.17
4	MJS	AMP	20.08.17
3	MJS	AMP	20.08.17
2	MJS	AMP	20.08.17
1	MJS	AMP	20.08.17

Revision	By	Appd.	YY.MM.DD
5	MJS	AMP	20.08.17
4	MJS	AMP	20.08.17
3	MJS	AMP	20.08.17
2	MJS	AMP	20.08.17
1	MJS	AMP	20.08.17

Revision	By	Appd.	YY.MM.DD
5	MJS	AMP	20.08.17
4	MJS	AMP	20.08.17
3	MJS	AMP	20.08.17
2	MJS	AMP	20.08.17
1	MJS	AMP	20.08.17



\\01\apps\design\cadd\16401570.dwg (16401570.dwg) 2024/03/20 09:51 AM by 16401570