

TOPOGRAPHICAL PLAN OF SURVEY OF

**PART OF BLOCK 3
REGISTERED PLAN 50M-136
CITY OF OTTAWA**

Surveyed by Annis, O'Sullivan, Vollebek Ltd.

Scale 1 : 400



Metric

DISTANCES SHOWN ON THIS PLAN ARE IN METRES AND CAN BE CONVERTED TO FEET BY DIVIDING BY 0.3048

Surveyor's Certificate

I CERTIFY THAT :

1. This survey and plan are correct and in accordance with the Surveys Act, the Surveyors Act and the regulations made under them.
2. The survey was completed on December 8, 2022.

Dec 14/22
Date

[Signature]
Mer J. Allison
Ontario Land Surveyor

ASSOCIATION OF ONTARIO
LAND SURVEYORS
PLAN SUBMISSION FORM
V-33900

THIS PLAN IS NOT VALID UNLESS
IT IS AN EMBOSSED ORIGINAL
COPY ISSUED BY THE SURVEYOR
IN ACCORDANCE WITH
Regulation 1026, Section 29 (3)

Notes & Legend

Denotes	
	Survey Monument Planted
	Survey Monument Found
SIB	Standard Iron Bar
SSIB	Short Standard Iron Bar
IB	Iron Bar
(WIT)	Witness
Meas.	Measured
(P1)	Plan 4R-27830
(P2)	Plan 4R-32589
(P3)	Plan 50R-6694
(AOG)	Annis, O'Sullivan, Vollebek Ltd.
-OH-	Overhead Wires
UP	Utility Pole
CSP	Corrugated Steel Pipe
Inv.	Invert
CLF	Chain Link Fence
TOS	Top of Slope
+65.00	Location of Elevations
C/L	Centreline

Bearings are grid, derived and are referred to the Central Meridian of MTM Zone 9 (76°30' West Longitude) NAD-83 (original).

ELEVATION NOTES

1. Elevations shown are geodetic and are referred to the CGVD28 geodetic datum.
2. It is the responsibility of the user of this information to verify that the job benchmark has not been altered or disturbed and that its relative elevation and description agrees with the information shown on this drawing.

UTILITY NOTES

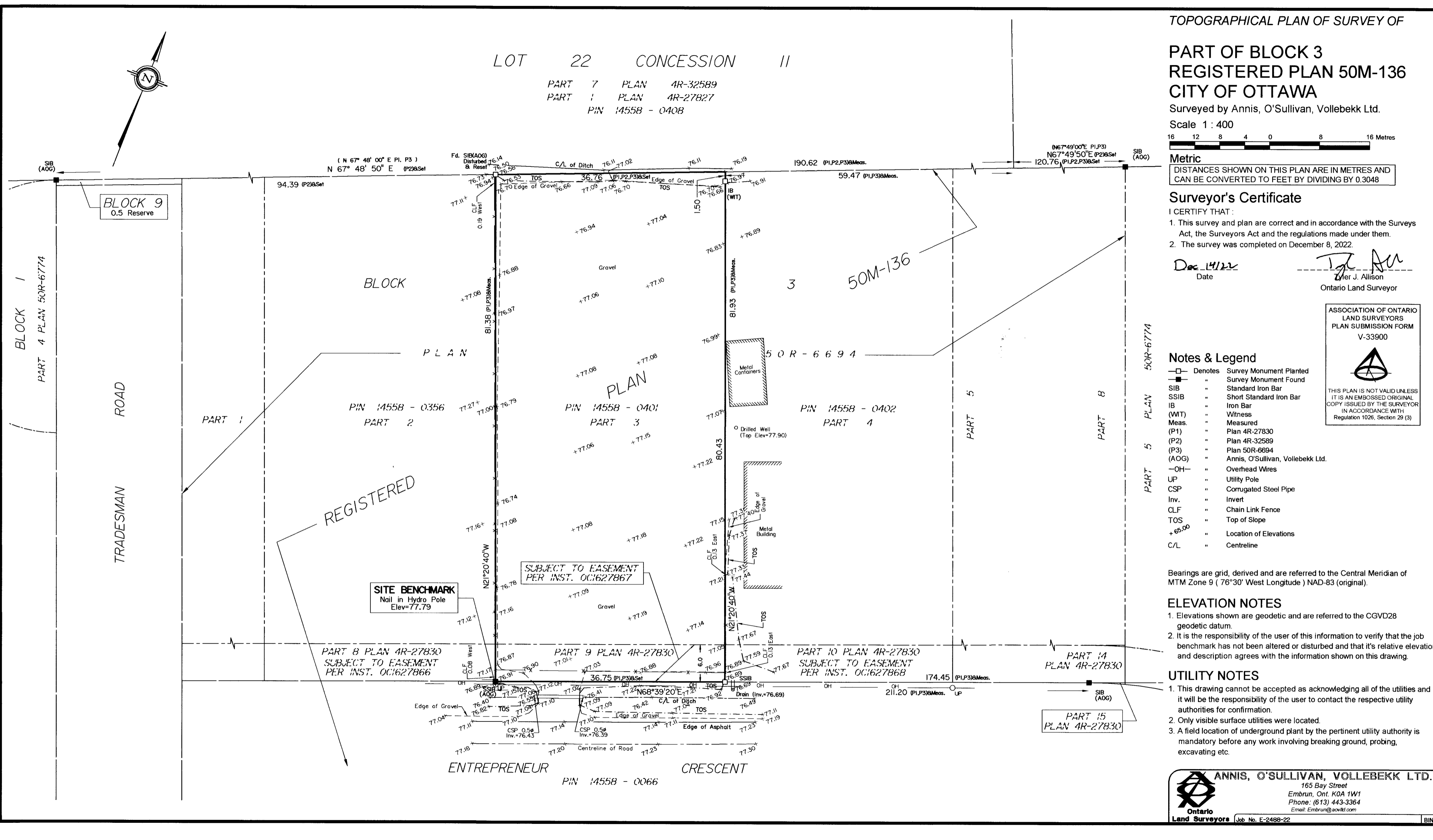
1. This drawing cannot be accepted as acknowledging all of the utilities and it will be the responsibility of the user to contact the respective utility authorities for confirmation.
2. Only visible surface utilities were located.
3. A field location of underground plant by the pertinent utility authority is mandatory before any work involving breaking ground, probing, excavating etc.

ANNIS, O'SULLIVAN, VOLLEBEKK LTD.
165 Bay Street
Embrun, Ont. K0A 1W1
Phone: (613) 443-3364
Email: Embrun@aovlltd.com

Ontario
Land Surveyors Job No. E-2488-22

LOT 22 CONCESSION 11

PART 7 PLAN 4R-32589
PART 1 PLAN 4R-27827
PIN 14558 - 0408



BLOCK 9
0.5 Reserve

BLOCK 1
PART 4 PLAN 50R-6774

BLOCK 3

PLAN

PIN 14558 - 0356
PART 2

PIN 14558 - 0401
PART 3

PIN 14558 - 0402
PART 4

REGISTERED

SITE BENCHMARK
Nail in Hydro Pole
Elev=77.79

SUBJECT TO EASEMENT
PER INST. OC:627867

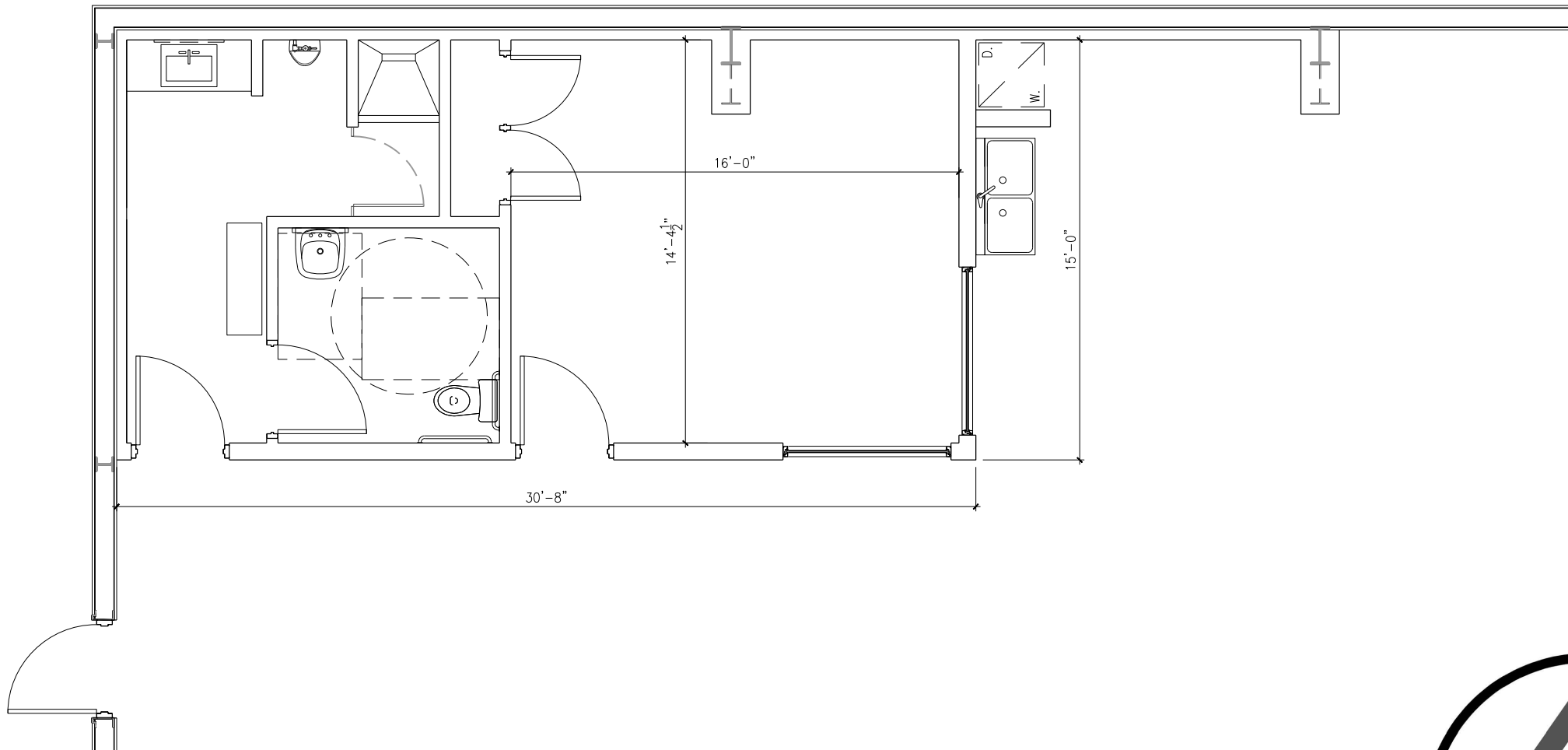
PART 8 PLAN 4R-27830
SUBJECT TO EASEMENT
PER INST. OC:627866

PART 9 PLAN 4R-27830

PART 10 PLAN 4R-27830
SUBJECT TO EASEMENT
PER INST. OC:627868

PART 15
PLAN 4R-27830

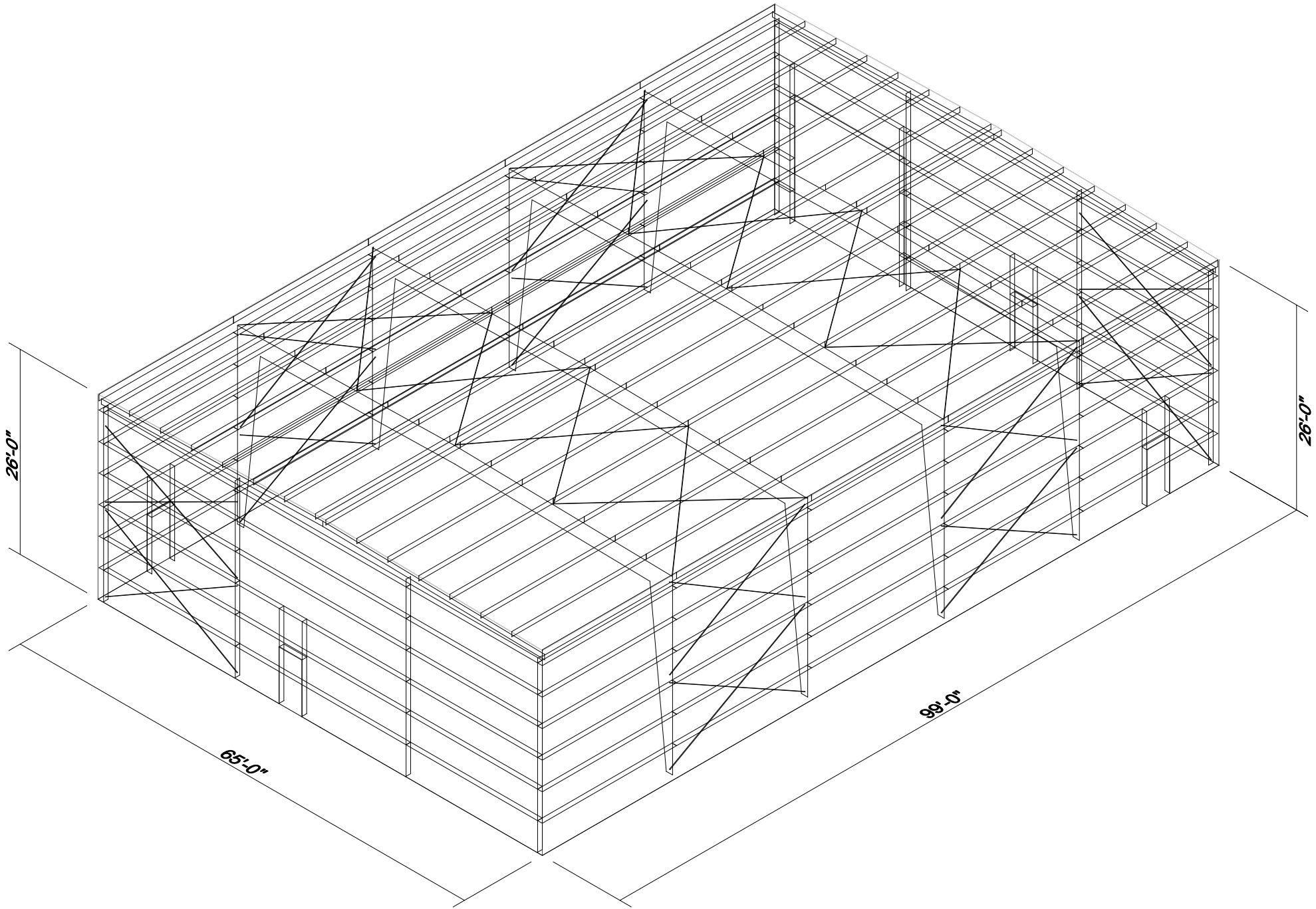
ENTREPRENEUR CRESCENT
PIN 14558 - 0066



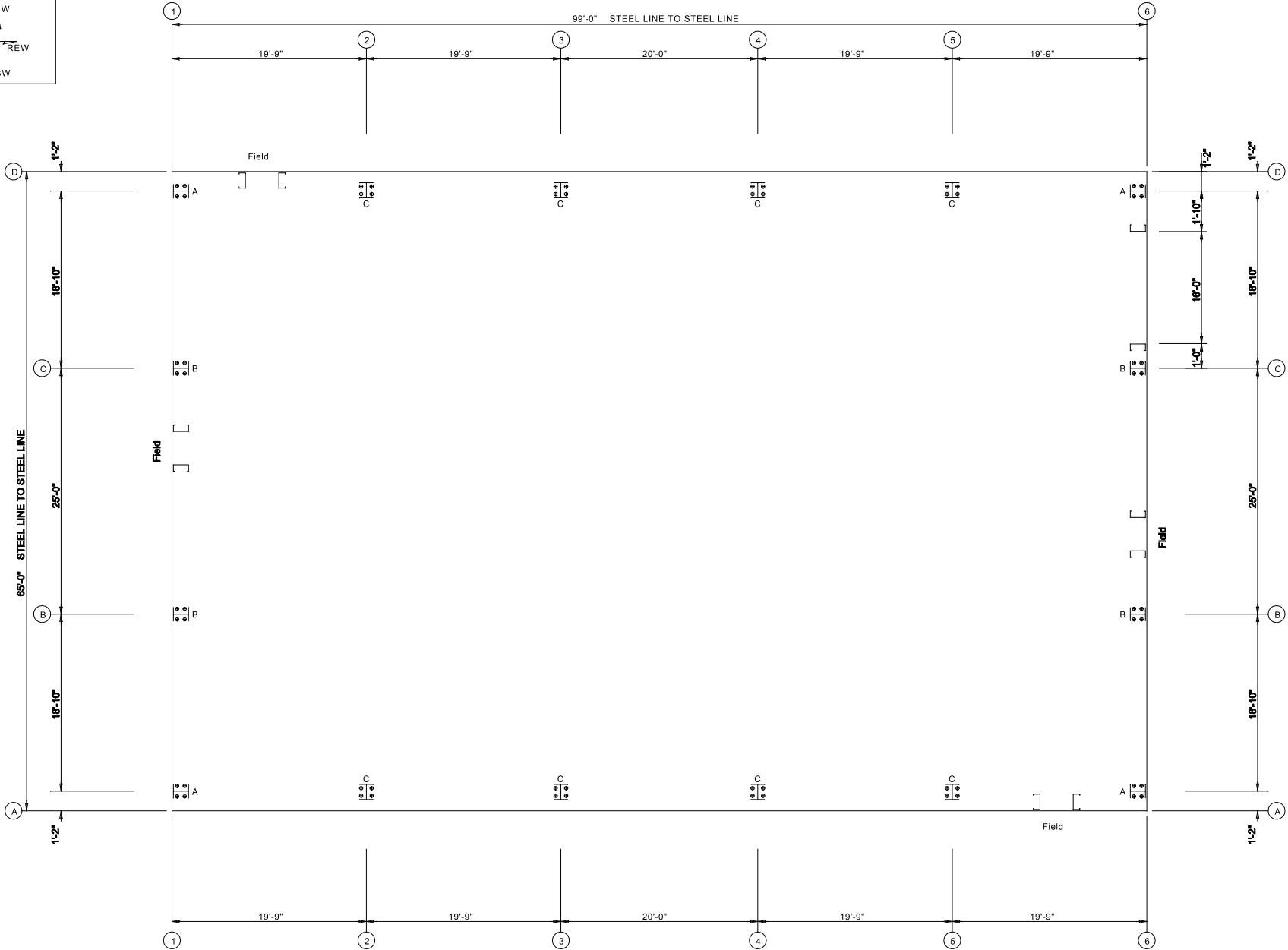
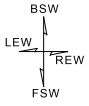
PROPOSED | GROUND FLOOR LAYOUT

SCALE: 3/16" = 1'-0"





LEGEND



ANCHOR BOLT PLAN
 NOTE: All Base Plates @ 100'-0" (U.N.)
 Finished Floor @ 100'-0"

DRAWING IS NOT TO SCALE



65x99

65'-0" x 99'-0" x 26'-0"

DATE: 7/9/24 REVISION: 0

ENG: DWN: APPD:

F.O.41736-1-1

65x99

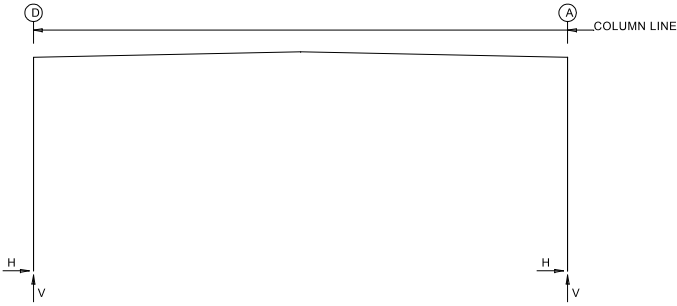
DRAWING STATUS

THESE DRAWINGS HAVE BEEN GENERATED FOR VISUALIZATION PURPOSES ONLY. THEY ARE PRELIMINARY AND SHOULD NOT BE USED FOR CONSTRUCTION. FINAL DRAWINGS WILL BE ISSUED ON A LATER DATE. ORDER HAS BEEN PLACED AND DESIGNATED FOR FABRICATION.

REVISION HISTORY

REV.	DESCRIPTION	DATE

FRAME LINES: 2 3 4 5



RIGID FRAME: BASIC COLUMN REACTIONS (k)

Frame Line	Column Line	----Dead----	--Collateral--	----Live----	----Snow----	--Wind_Left1-	-Wind_Right1-
		Horz	Vert	Horz	Vert	Horz	Vert
2*	D	1.2	4.0	0.7	2.0	5.1	13.6
2*	A	-1.2	4.0	-0.7	2.0	-5.1	13.6
2*	D	-4.8	-2.5	0.7	1.4	-0.5	-12.3
2*	A	-0.7	1.4	4.8	-2.5	0.6	-10.7
2*	D	0.0	-8.1	9.0	27.7	8.9	19.5
2*	A	0.0	-8.1	-8.9	19.5	-9.0	27.7

Frame lines: 2 3 4 5

RIGID FRAME: ANCHOR BOLTS & BASE PLATES

Frm Line	Col Line	Anc_Bolt Qty	Bolt Dia	Base_Plate Width	Base_Plate Length	Thick	AFF/BFF (in)
2*	D	4	0.750	8.000	11.63	0.500	0.0
2*	A	4	0.750	8.000	11.63	0.500	0.0

2* Frame lines: 2 3 4 5



65x89

65'-0" x 99'-0" x 26'-0"

DATE: 7/9/24 REVISION: 0

ENG: DWN: APPD:

F.O.41736-1-1

65x99

DRAWING STATUS

THESE DRAWINGS HAVE BEEN GENERATED FOR VISUALIZATION PURPOSES ONLY. THEY ARE PRELIMINARY AND SHOULD NOT BE USED FOR CONSTRUCTION. FINAL DRAWINGS WILL BE ISSUED ON A SEPARATE SHEET PER 146 BEEN PLACED AND DESIGNATED FOR FABRICATION.

REVISION HISTORY

REV.	DESCRIPTION	DATE

ENDWALL COLUMN: BASIC COLUMN REACTIONS (k)													
Frm Line	Col Line	Dead	Collat	Live	Snow	Wind_Left1	Wind_Right1	Wind_Left2	Wind_Right2	Wind Press			
Line	Line	Vert	Vert	Vert	Vert	Horz	Horz	Horz	Horz	Horz	Horz	Vert	Vert
1	D	0.7	0.2	1.6	3.8	-2.0	-4.3	0.0	1.6	-2.0	-3.3	0.0	2.6
1	C	1.5	0.7	5.2	12.1	0.0	-2.5	2.0	-6.0	0.0	0.5	2.0	-3.0
1	B	1.5	0.7	5.2	12.1	0.0	-3.4	0.0	-5.1	0.0	-0.4	0.0	-2.1
1	A	0.7	0.2	1.6	3.8	0.0	-1.0	0.0	-1.7	0.0	0.0	0.0	-0.7

Frm Line	Col Line	Wind Suct	Wind_Long1	Wind_Long2	Seis_Left	Seis_Right	Seis_Long	E1UNB_SL_L
Line	Line	Horz	Horz	Vert	Horz	Vert	Horz	Vert
1	D	1.3	0.0	-1.7	-0.1	-1.1	-3.3	-4.2
1	C	2.6	0.1	-5.2	0.0	-3.3	0.0	4.2
1	B	2.6	0.0	-3.4	0.0	-5.1	0.0	0.0
1	A	1.3	0.0	-1.0	0.0	-1.7	0.0	0.0

Frm Line	Col Line	E1UNB_SL_R
Line	Line	Vert
1	D	1.8
1	C	11.6
1	B	11.6
1	A	3.9

Frm Line	Col Line	Dead	Collat	Live	Snow	Wind_Left1	Wind_Right1	Wind_Left2	Wind_Right2	Wind Press
Line	Line	Vert	Vert	Vert	Vert	Horz	Horz	Horz	Horz	Horz
6	A	0.7	0.2	1.6	3.8	-2.0	-4.3	0.0	1.6	-2.0
6	B	1.5	0.7	5.2	12.1	0.0	-2.5	2.0	-6.0	0.0
6	C	1.5	0.7	5.2	12.1	0.0	-3.4	0.0	-5.1	0.0
6	D	0.7	0.2	1.6	3.8	0.0	-1.0	0.0	-1.7	0.0

Frm Line	Col Line	Wind Suct	Wind_Long1	Wind_Long2	Seis_Left	Seis_Right	Seis_Long	E2UNB_SL_L
Line	Line	Horz	Horz	Vert	Horz	Vert	Horz	Vert
6	A	1.3	0.0	-1.7	-0.1	-1.1	-3.3	-4.2
6	B	2.6	0.1	-5.2	0.0	-3.3	0.0	4.2
6	C	2.6	0.0	-3.4	0.0	-5.1	0.0	0.0
6	D	1.3	0.0	-1.0	0.0	-1.7	0.0	0.0

Frm Line	Col Line	E2UNB_SL_R
Line	Line	Vert
6	A	1.8
6	B	11.6
6	C	11.6
6	D	3.9

ANCHOR BOLT SUMMARY			
Qty	Locate	Dia (in)	Type
32	Endwall	3/4"	
32	Frame	3/4"	


BUILDING BRACING REACTIONS			
Reactions in plane of wall			
Wall	Col	Reactions(k)	
Loc	Line	Wind	Seismic
Line	Line	Horz	Vert
Reaction Type	Reaction	Reaction	Description
Dead	Dead	6.8	6.8
Collateral	Collateral		
Wind_Right1	Transverse Wind From Right With Internal Pressure		
Wind_Left2	Transverse Wind From Left With Internal Suction		
Wind_Right2	Transverse Wind From Right With Internal Suction		
Wind_Long1	Longitudinal Wind From Left Endwall		
Wind_Long2	Longitudinal Wind From Right Endwall		
Wind_Press	Wind Pressure Applied Towards Endwall		
Wind_Suct	Wind Suction Applied Away From Endwall		
Seismic_Left	Seismic Load Applied From Left		
Seismic_Right	Seismic Load Applied From Right		
Seismic_Long	Seismic Load Applied Longitudinally		
F# Unb_SL_L	Unbalanced Snow Load On Left		
F# Unb_SL_R	Unbalanced Snow Load On Right		
F# PAT_SL#	Pattern Snow Load		
Drift	Snow Drift Load		
Sliding	Sliding Snow Load		
HorzOP	Horizontal Out of Plane Load		

ENDWALL COLUMN: ANCHOR BOLTS & BASE PLATES						
Frm Line	Col Line	Anc. Bolt Qty	Base Plate Width	Base Plate Length	Thick	AFF/BFF (in)
1	D	4	0.750	6.000	9.875	0.375
1	C	4	0.750	6.000	9.875	0.375
1	B	4	0.750	6.000	9.875	0.375
1	A	4	0.750	6.000	9.875	0.375
6	A	4	0.750	6.000	9.875	0.375
6	B	4	0.750	6.000	9.875	0.375
6	C	4	0.750	6.000	9.875	0.375
6	D	4	0.750	6.000	9.875	0.375

DESIGN INFORMATION			

1. All loading conditions are examined and only the maximum / minimum H or V and the corresponding H or V are reported.			
2. Positive reactions are shown in the sketch. Foundation loads are in opposite directions.			
3. Bracing reactions are in the plane of the brace with the H pointing away from the braced bay. The vertical reaction is downward.			
4. Building reactions are based on the following building data:			
DESIGN CRITERIA	SEISMIC CRITERIA	DEFLECTION LIMITS	

Width (ft)	= 65		
Length (ft)	= 99		
Eave Height (ft)	= 26		
Roof Slope (rise/12)	= 0.25:12		
Building Code	= NBC 15		
Local Code (State/Prov)	= NBC 15		
Dead Load (psf)	= 3.25	Sa (0.2) = 0.4740	
Collateral Load (psf)	= 3.01	Sa (0.5) = 0.2520	
Roof Live Load (psf)	= 20.89	Sa (1.0) = 0.1240	
Frame Live Load (psf)	= 20.89	Sa (2.0) = 0.0580	
		Sa (5.0) = 0.0150	
		Sa (10.0) = 0.0056	
Snow:		Site Class = D	
Ground Snow Load (psf)	= 50.16	WALL PANEL	
Snow Importance	= 1.0000	L / 90	
Associated Rain Load (psf)	= 8.36	ROOF PANEL (Live)	
Wind Exposure Factor	= 1.00	L / 180	
Slippery Roof	= N	Roof Panel (Wind)	
Roof Snow Load (psf)	= 48.49	L / 180	
Wind:		Main Frame (Horiz)	
Wind (1/50) (psf)	= 8.57	H / 60	
Risk Category	= II - Normal	Main Frame (Vert)	
Importance - Wind	= 1.00	L / 180	
Wind Exposure	= O	WIND BRACING	
Enclosure Classification = 2		H / 60	
--Internal Pressure Coefficients--		Main Frame (Crane)	
Pressure	= 0.30	H / 100	
Suction	= -0.45	Main Frame (Seismic)	
----Components & Cladding----		H / 65	
Design Pressure:	= 22.09	SEISMIC BRACING	
Pressure (psf)	= 22.09	H / 65	
Suction (psf)	= -22.09	PARTITION COLUMN	
Equivalent Static Force Procedure.		L / 120	
		PARTITION GIRT	
		L / 90	
		PARTITION PANEL	
		L / 90	



65x99
65'-0" x 99'-0" x 26'-0"

DATE: 7 / 9/24 REVISION: 0
ENG: DWN: APPD:

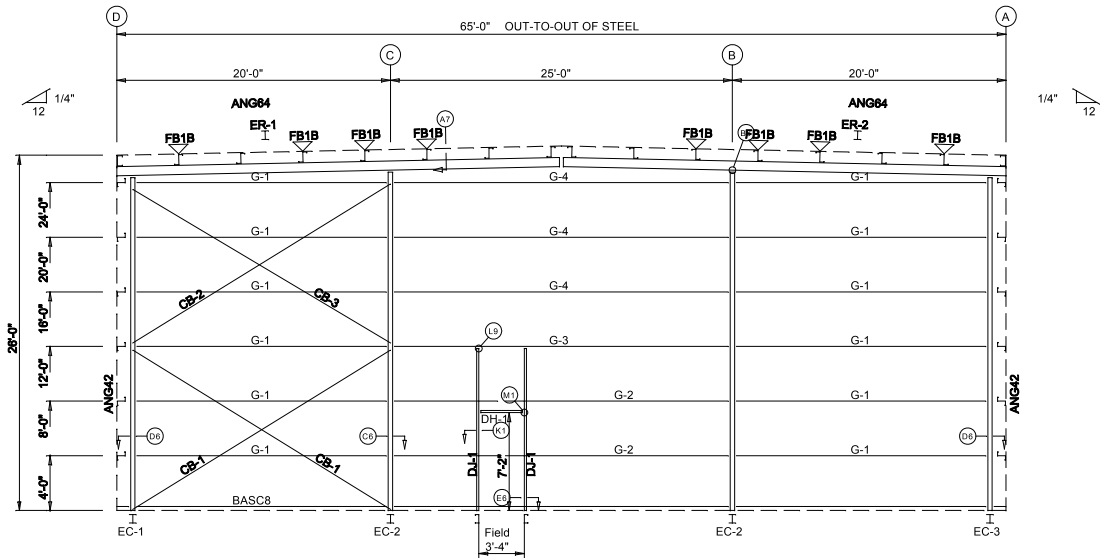
REVISION HISTORY	
REV.	DESCRIPTION

65x99

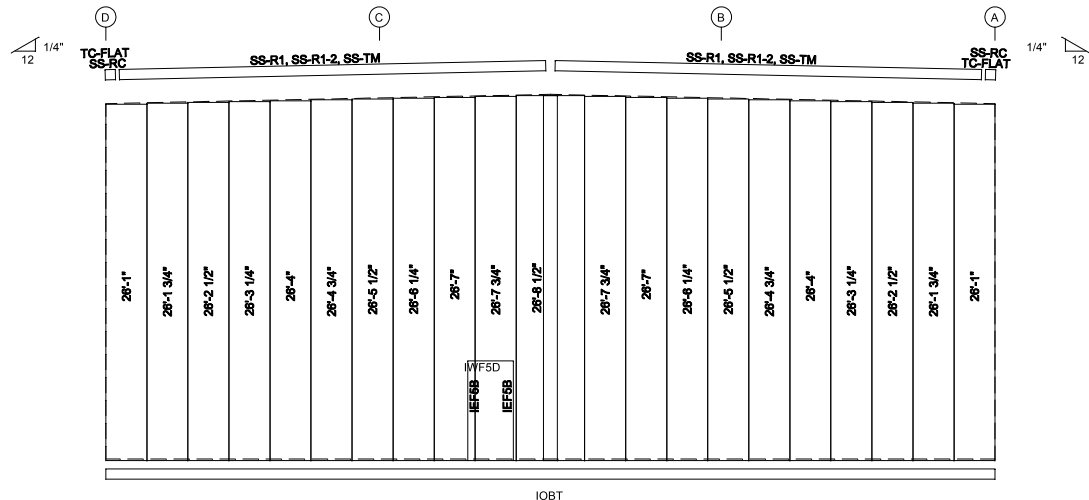
DRAWING STATUS

THESE DRAWINGS HAVE BEEN GENERATED FOR VISUALIZATION PURPOSES ONLY. THEY ARE PRELIMINARY AND SHOULD NOT BE USED FOR CONSTRUCTION. ALL DIMENSIONS WILL BE ISSUED ONLY AS SHOWN ON THE DRAWINGS. DIMENSIONS SHALL BE FABRICATION.

PAGE OF



ENDWALL FRAMING: FRAME LINE 1



ENDWALL SHEETING & TRIM: FRAME LINE 1

PANELS: 26 Ga. R - Charcoal Grey

BOLT TABLE				
FRAME LINE 1				
LOCATION	QUAN	TYPE	DIA	LENGTH
ER-1/ER-2	8	A325	1/2"	1 1/2"
Columns/Raf	2	A325	3/4"	1 3/4"

MEMBER TABLE				
FRAME LINE 1				
QUAN	MARK	PART	LENGTH	
1	EC-1	W10X12	24'-1 9/16"	
2	EC-2	W10X12	24'-6 1/4"	
1	EC-3	W10X12	24'-1 9/16"	
1	ER-1	W12X16	32'-6 1/16"	
1	ER-2	W12X16	32'-6 1/16"	
2	DJ-1	08X35C16	11'-11 3/4"	
1	DH-1	08X35C16	3'-4"	
12	G-1	08X25Z16	18'-5 1/2"	
2	G-2	08X25Z16	24'-7 1/2"	
1	G-3	C8X11.5	24'-7 1/2"	
3	G-4	08X25Z13	24'-7 1/2"	
2	CB-1	L303025	21'-7 9/16"	
1	CB-2	L303025	21'-10 3/8"	
1	CB-3	L303025	21'-8"	

FLANGE BRACE TABLE		
FRAME LINE 1		
VID	MARK	LENGTH
1	FB1B	1'-6"



65x89
65'-0" x 98'-0" x 26'-0"
DATE: 7/9/24 REVISION: 0
ENG: DWN: APPD:

F.O.41736-1-1

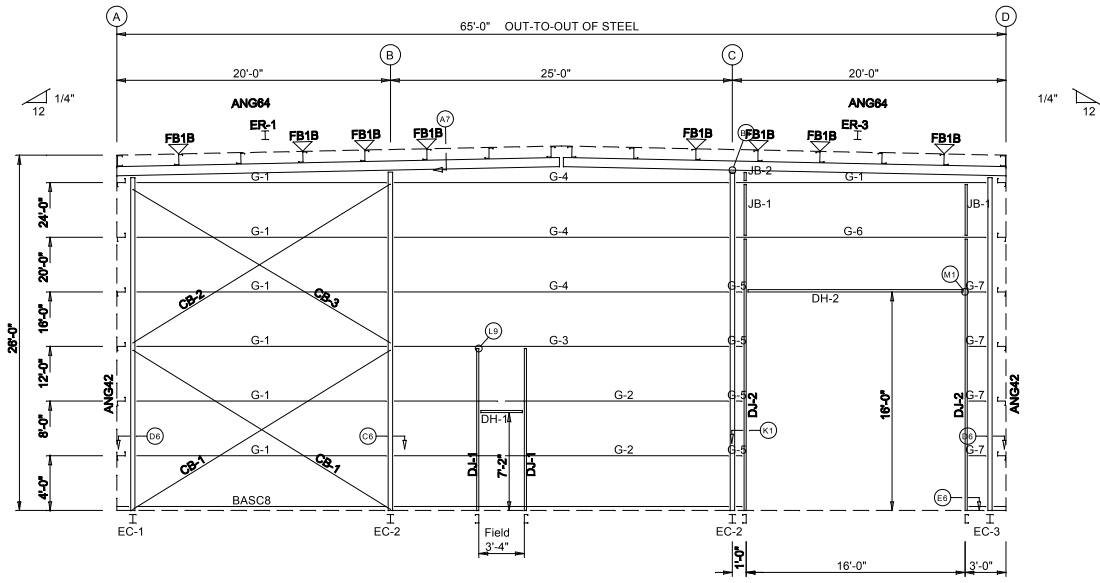
DRAWING STATUS		REVISION HISTORY	
REV.	DATE	DESCRIPTION	DATE

THESE DRAWINGS HAVE BEEN GENERATED FOR VISUALIZATION PURPOSES ONLY. THEY ARE PRELIMINARY AND SHOULD NOT BE USED FOR CONSTRUCTION. FINAL DRAWINGS WILL BE ISSUED ONLY AFTER ALL COMMENTS HAVE BEEN REVIEWED AND DESIGNATED FOR FABRICATION.

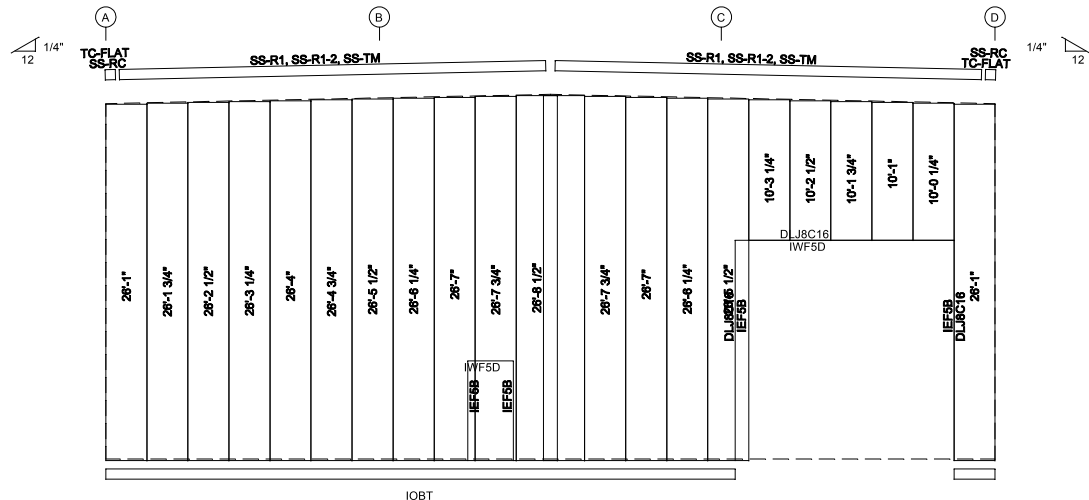
DRAWING IS NOT TO SCALE

TRIM COLORS	
EAVE TRIM = SP Black	CORNER TRIM = SP Black
BASE TRIM = SP Black	GUTTER = Black
DOOR TRIM = SP Black	DOWNSPOUTS = Black
RAKE TRIM = SP Black	
* LINER TRIM = Liner panel color	
* SOFFIT TRIM = Soffit panel color	
* ONLY APPLICABLE IF LINER TRIM OR SOFFIT PANEL IS INDICATED ON BUILDING ORDER.	

- GENERAL NOTES:**
- Use TEK5WW screws in place of SD150 panel screws at all 10 gage members.
 - See detail C7A for field coping of coldform endwall column flange braces.
 - All connections to door or window jambs where the clip is not designated in the clip table / drawing are made with JC# clips (#= Girt Depth).



ENDWALL FRAMING: FRAME LINE 6



ENDWALL SHEETING & TRIM: FRAME LINE 6

PANELS: 26 Ga. R - Charcoal Grey

BOLT TABLE				
FRAME LINE 6				
LOCATION	QUAN	TYPE	DIA	LENGTH
ER-1/ER-3	8	A325	1/2"	1 1/2"
Columns/Raf	2	A325	3/4"	1 3/4"

MEMBER TABLE				
FRAME LINE 6				
QUAN	MARK	PART	LENGTH	
1	EC-1	W10X12	24'-1 9/16"	
2	EC-2	W10X12	24'-6 1/4"	
1	EC-3	W10X12	24'-1 9/16"	
1	ER-1	W12X16	32'-6 1/16"	
1	ER-3	W12X16	32'-6 1/16"	
2	DJ-1	08X35C16	11'-11 3/4"	
2	DJ-2	08X35C13	19'-11 3/4"	
1	DH-1	08X35C16	3'-4"	
1	DH-2	08X35C16	16'-0"	
7	G-1	08X25Z16	18'-5 1/2"	
2	G-2	08X25Z16	24'-7 1/2"	
1	G-3	C8X11.5	24'-7 1/2"	
3	G-4	08X25Z13	24'-7 1/2"	
4	G-5	08X25Z16	6"	
1	G-6	08X25Z13	18'-5 1/2"	
4	G-7	08X25Z16	1'-4"	
2	CB-1	L303025	21'-7 9/16"	
1	CB-2	L303025	21'-10 3/8"	
1	CB-3	L303025	21'-8"	
2	JB-1	08X35C16	3'-11 1/2"	
1	JB-2	08X35C16	2 1/2"	

FLANGE BRACE TABLE		
FRAME LINE 6		
VID	MARK	LENGTH
1	FB1B	1'-6"

65x89
65'-0" x 99'-0" x 26'-0"
DATE: 7/9/24 REVISION: 0
ENG: DWN: APPD:

F.O.41736-1-1

REVISION HISTORY	
REV.	DESCRIPTION

DRAWING STATUS
 THESE DRAWINGS HAVE BEEN GENERATED FOR VISUALIZATION PURPOSES ONLY. THEY ARE PRELIMINARY AND SHOULD NOT BE USED FOR CONSTRUCTION. ALL DIMENSIONS WILL BE ISSUED ON FABRICATION.
 ONLY APPLICABLE IF LINER TRIM OR SOFFIT PANEL IS INDICATED ON BUILDING ORDER.

65x99

DRAWING IS NOT TO SCALE

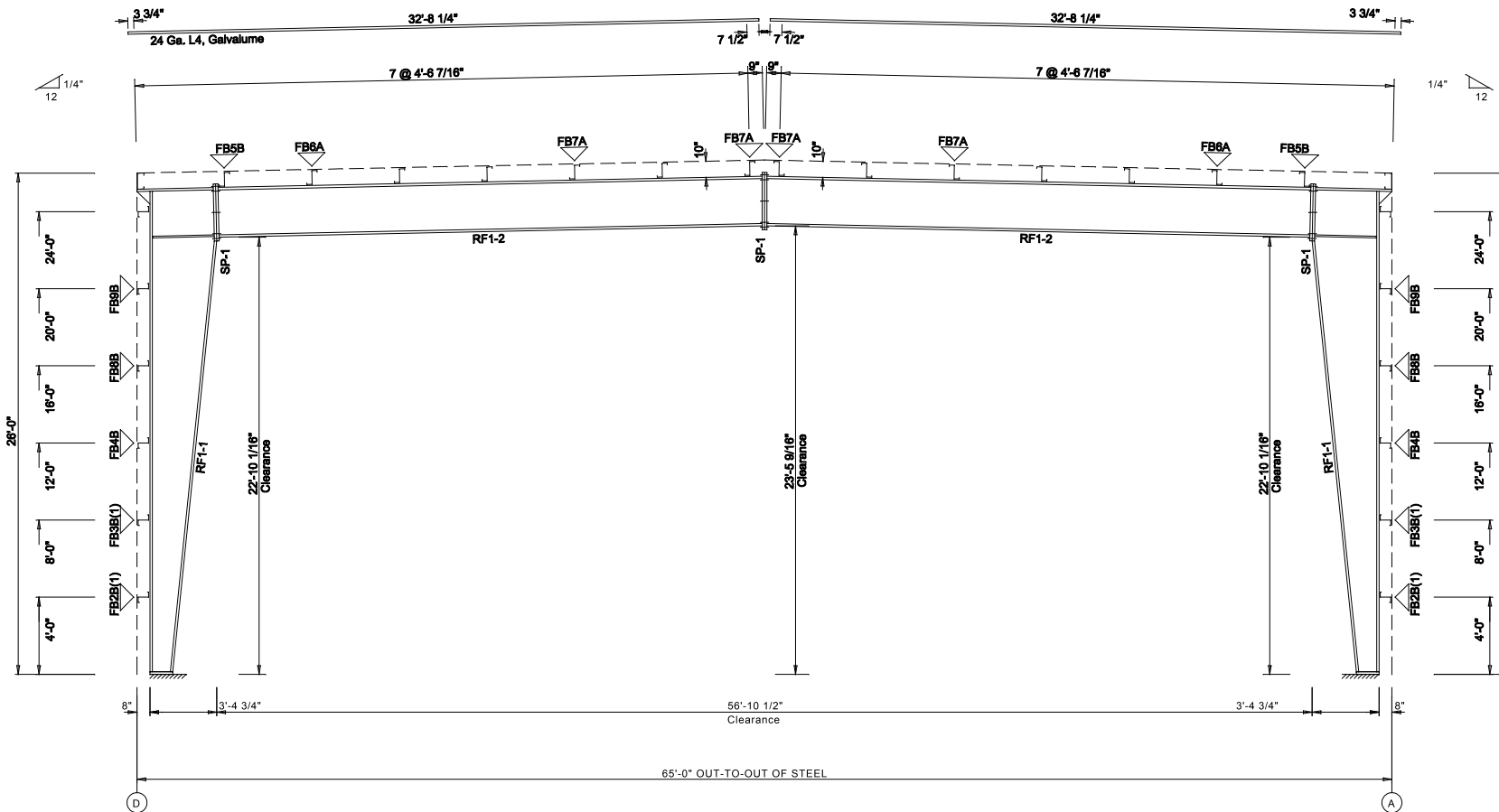
TRIM COLORS	
EAVE TRIM = SP Black	CORNER TRIM = SP Black
BASE TRIM = SP Black	GUTTER = Black
DOOR TRIM = SP Black	DOWNSPOUTS = Black
RAKE TRIM = SP Black	
* LINER TRIM = Liner panel color	
* SOFFIT TRIM = Soffit panel color	

- GENERAL NOTES:**
- Use TEK5WW screws in place of SD150 panel screws at all 10 gage members.
 - See detail C7A for field coping of coldform endwall column flange braces.
 - All connections to door or window jambs where the clip is not designated in the clip table / drawing are made with JC# clips (#= Girt Depth).

SPLICE BOLT TABLE						
Mark	Qty		Int	Type	Dia	Length
	Top	Bot				
SP-1	4	4	2	A325	1.000	2.75

MEMBER TABLE						
Mark	Web Depth		Web Plate		Outside Flange	Inside Flange
	Start/End	Thick	Length	Length	W x Thk x Length	W x Thk x Length
RF1-1	11.0/37.0	0.188	242.2		6 x 1/4" x 301.4	6 x 3/8" x 120.7
	37.0/40.0	0.188	60.0		6 x 5/16" x 47.6	6 x 1/2" x 150.6
RF1-2	28.0/28.0	0.250	220.3		6 x 5/16" x 220.3	6 x 5/8" x 100.3
	28.0/28.0	0.188	120.0		6 x 3/8" x 120.0	6 x 3/8" x 120.0
					6 x 1/2" x 120.0	6 x 1/4" x 119.4

FLANGE BRACES: Both Sides(U.N.)
 FBxxB(1)
 B - L20X1/4
 A - L15X1/8



BUILDING CROSS SECTION: FRAME LINE 2 3 4 5

GENERAL NOTES:
 1. See Detail Sheets for Connection Information.
 2. See Shipping List for Flange Brace Lengths.

DRAWING IS NOT TO SCALE



65x99
 65'-0" x 99'-0" x 26'-0"
 DATE: 7/9/24 REVISION: 0
 ENG: DWN: APPD:

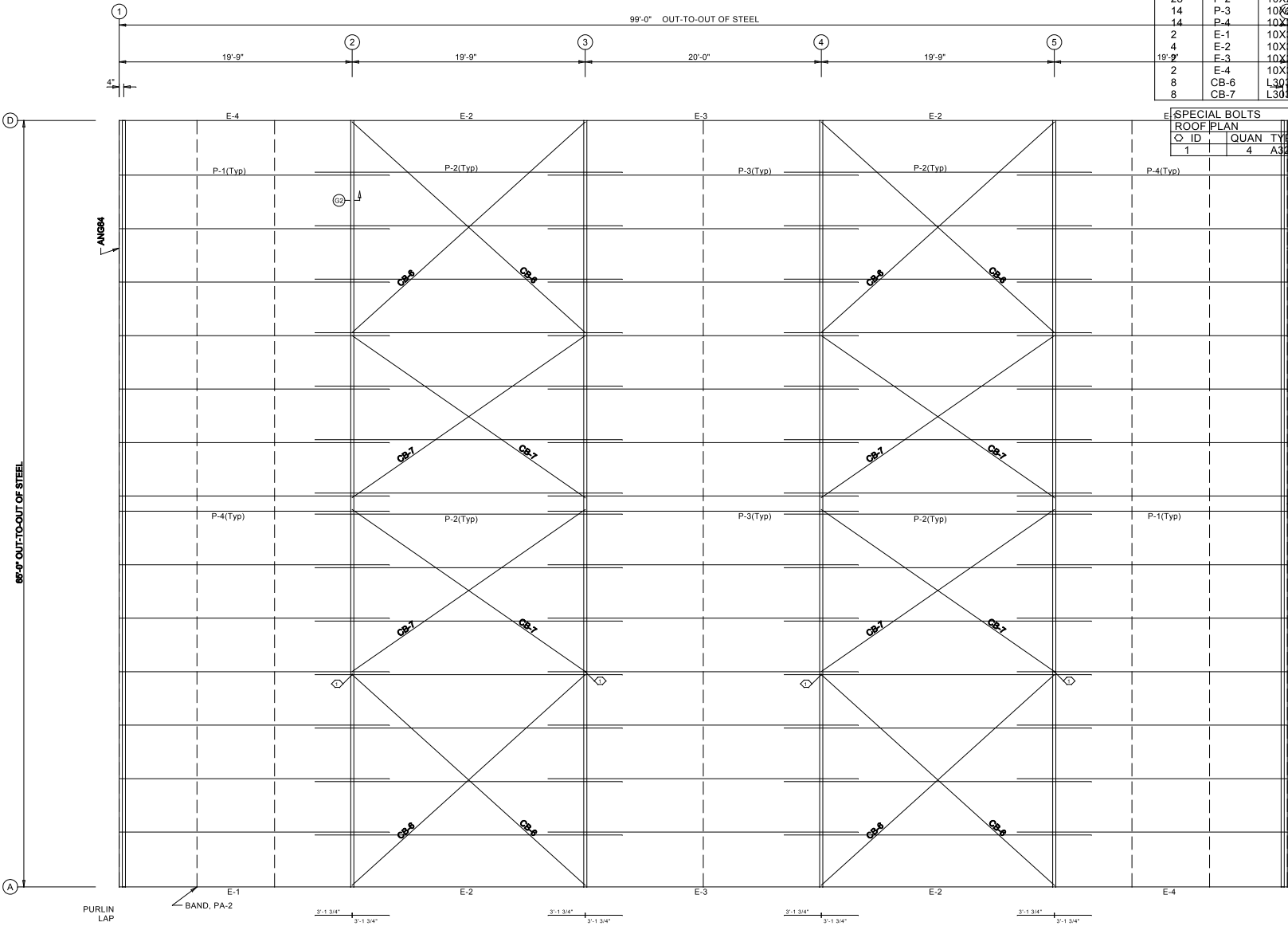
F.O.41736-1-1

DRAWING STATUS	
REV.	DESCRIPTION

65x99

THESE DRAWINGS HAVE BEEN GENERATED FOR VISUALIZATION PURPOSES ONLY. THEY ARE PRELIMINARY AND SHOULD NOT BE USED FOR CONSTRUCTION. ANY CHANGES TO THESE DRAWINGS WILL BE ISSUED AS REVISIONS. THE DRAWINGS WILL BE ISSUED ONLY AFTER THEY HAVE BEEN PLACED AND DESIGNATED FOR FABRICATION.

PAGE OF



MEMBER TABLE			
ROOF PLAN			
QUAN	MARK	PART	LENGTH
14	P-1	10X25Z13	22'-10 1/2"
28	P-2	10X25Z14	26'-0 1/2"
14	P-3	10X25Z14	26'-3 1/2"
14	P-4	10X25Z13	22'-10 1/2"
2	E-1	10XB5E14	19'-8 1/2"
4	E-2	10XB5E10	19'-8 1/2"
19'-9"	E-3	10XB5E13	19'-11 1/2"
2	E-4	10XB5E14	19'-8 1/2"
8	CB-6	L308025	25'-8 3/4"
8	CB-7	L308025	23'-10 1/8"

SPECIAL BOLTS					
ROOF PLAN					
ID	QUAN	TYPE	DIA	LENGTH	WASH
1	4	A325	1/2"	1 1/4"	0



65x89
 65'-0" x 99'-0" x 26'-0"
 DATE: 7/9/24 REVISION: 0
 ENG: DWN: APPD:

F.O.41736-1-1

DRAWING STATUS		REVISION HISTORY	
REV.	DESCRIPTION	REV.	DESCRIPTION

65x89

THESE DRAWINGS HAVE BEEN GENERATED FOR VISUALIZATION PURPOSES ONLY. THEY ARE PRELIMINARY AND SHOULD NOT BE USED FOR CONSTRUCTION. ALL DIMENSIONS WILL BE ISSUED ONLY ON THE FABRICATION DRAWINGS. ALL DIMENSIONS WILL BE ISSUED ONLY ON THE FABRICATION DRAWINGS.

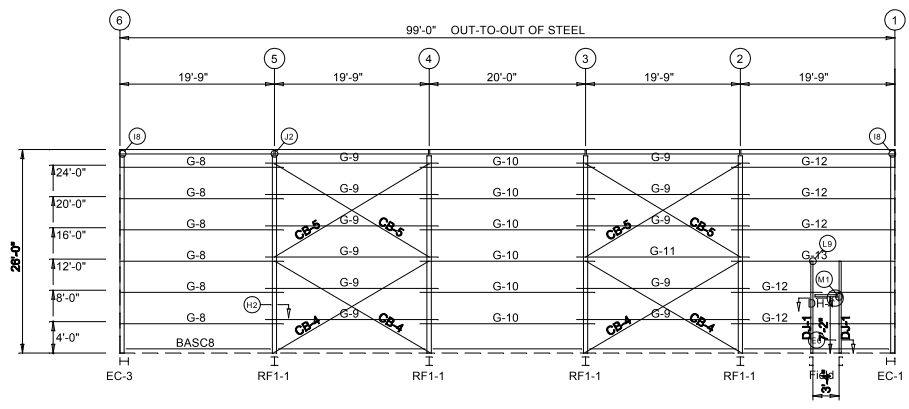
GENERAL NOTES:

- Screw Down Roof: Use TEK5WW screws in place of SD150 panel screws at all 10 gage purlins, eave struts, or roof joists.
- Standing Seam Roof: Use FST#6 in place of FST#1 clip to purlin screws at all 10 gage purlins, eave struts, or at roof joists.

ROOF FRAMING PLAN

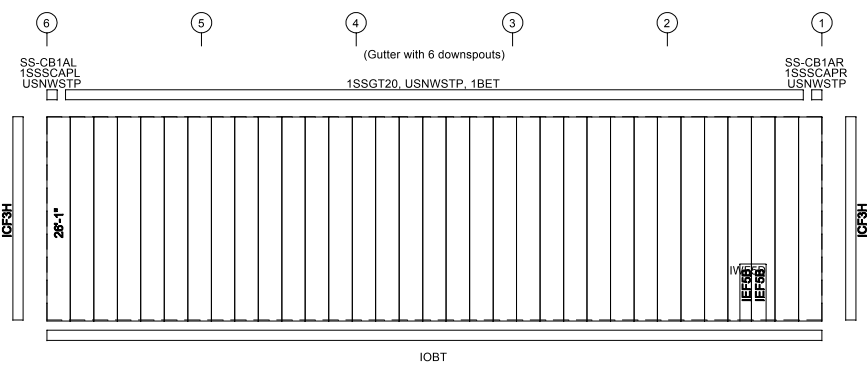
DRAWING IS NOT TO SCALE

MEMBER TABLE			
FRAME LINE D			
QUAN	MARK	PART	LENGTH
2	DJ-1	08X35C16	11'-11 3/4"
1	DH-1	08X35C16	3'-4"
6	G-8	08X25Z16	20'-10 1/2"
11	G-9	08X25Z16	22'-0 1/2"
6	G-10	08X25Z16	22'-3 1/2"
1	G-11	08X25Z14	22'-0 1/2"
5	G-12	08X25Z16	20'-10 1/2"
1	G-13	08X25Z13	20'-10 1/2"
4	CB-4	L303025	22'-5 3/8"
4	CB-5	L303025	22'-11 11/16"



GIRT LAPS 1'-1 3/4" 1'-1 3/4" 1'-1 3/4" 1'-1 3/4" 1'-1 3/4" 1'-1 3/4"

SIDEWALL FRAMING: FRAME LINE D



SIDEWALL SHEETING & TRIM: FRAME LINE D
PANELS: 26 Ga. R - Charcoal Grey

DRAWING IS NOT TO SCALE

TRIM COLORS	
EAVE TRIM = SP Black	CORNER TRIM = SP Black
BASE TRIM = SP Black	GUTTER = Black
DOOR TRIM = SP Black	DOWNSPOUTS = Black
RAKE TRIM = SP Black	
* LINER TRIM = Liner panel color	
* SOFFIT TRIM = Soffit panel color	
* ONLY APPLICABLE IF LINER TRIM OR SOFFIT PANEL IS INDICATED ON BUILDING ORDER.	

GENERAL NOTES:
 1. Use TEK5WW screws in place of SD150 panel screws.
 2. All connections to door or window jambs where the clip is not designated in the clip table / drawing are made with JC# clips (#= Girt Depth).



65x89
 65'-0" x 99'-0" x 26'-0"
 DATE: 7/9/24 REVISION: 0
 ENG: DWN: APPD:

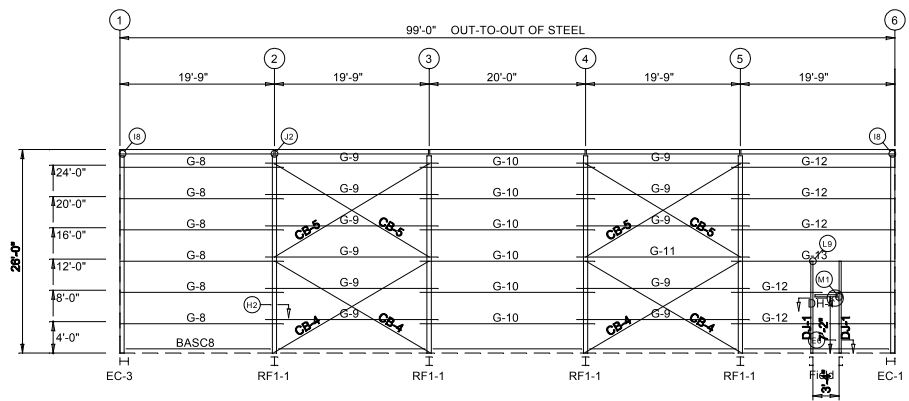
F.O.41736-1-1

REVISION HISTORY	
REV.	DESCRIPTION

DRAWING STATUS
 THESE DRAWINGS HAVE BEEN GENERATED FOR VISUALIZATION PURPOSES ONLY. THEY ARE PRELIMINARY AND SHOULD NOT BE USED FOR CONSTRUCTION. FINAL DRAWINGS WILL BE ISSUED ONLY AFTER ALL COMMENTS HAVE BEEN RECEIVED AND DESIGNATED FOR FABRICATION.

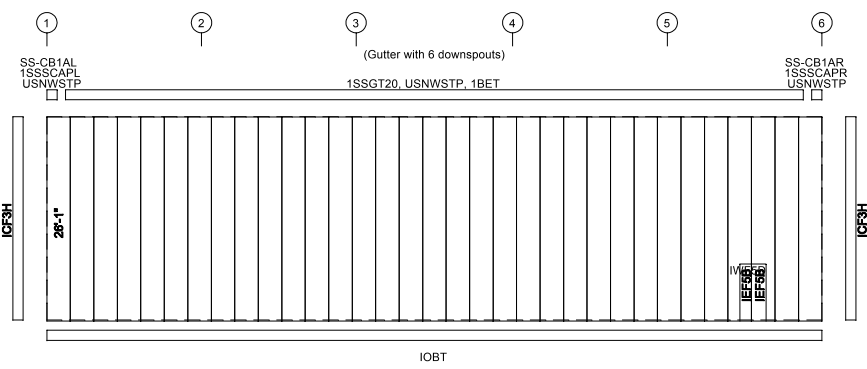
65x89

MEMBER TABLE			
FRAME LINE A			
QUAN	MARK	PART	LENGTH
2	DJ-1	08X35C16	11'-11 3/4"
1	DH-1	08X35C16	3'-4"
6	G-8	08X25Z16	20'-10 1/2"
11	G-9	08X25Z16	22'-0 1/2"
6	G-10	08X25Z16	22'-3 1/2"
1	G-11	08X25Z14	22'-0 1/2"
5	G-12	08X25Z16	20'-10 1/2"
1	G-13	08X25Z13	20'-10 1/2"
4	CB-4	L303025	22'-5 3/8"
4	CB-5	L303025	22'-11 11/16"



GIRT LAPS 1'-1 3/4" 1'-1 3/4" 1'-1 3/4" 1'-1 3/4" 1'-1 3/4" 1'-1 3/4"

SIDEWALL FRAMING: FRAME LINE A



SIDEWALL SHEETING & TRIM: FRAME LINE A
PANELS: 26 Ga. R - Charcoal Grey

DRAWING IS NOT TO SCALE

TRIM COLORS	
EAVE TRIM = SP Black	CORNER TRIM = SP Black
BASE TRIM = SP Black	GUTTER = Black
DOOR TRIM = SP Black	DOWNSPOUTS = Black
RAKE TRIM = SP Black	
* LINER TRIM = Liner panel color	
* SOFFIT TRIM = Soffit panel color	
* ONLY APPLICABLE IF LINER TRIM OR SOFFIT PANEL IS INDICATED ON BUILDING ORDER.	

GENERAL NOTES:
 1. Use TEK5WW screws in place of SD150 panel screws at all 10 gage members.
 2. All connections to door or window jambs where the clip is not designated in the clip table / drawing are made with JC# clips (#= Girt Depth).



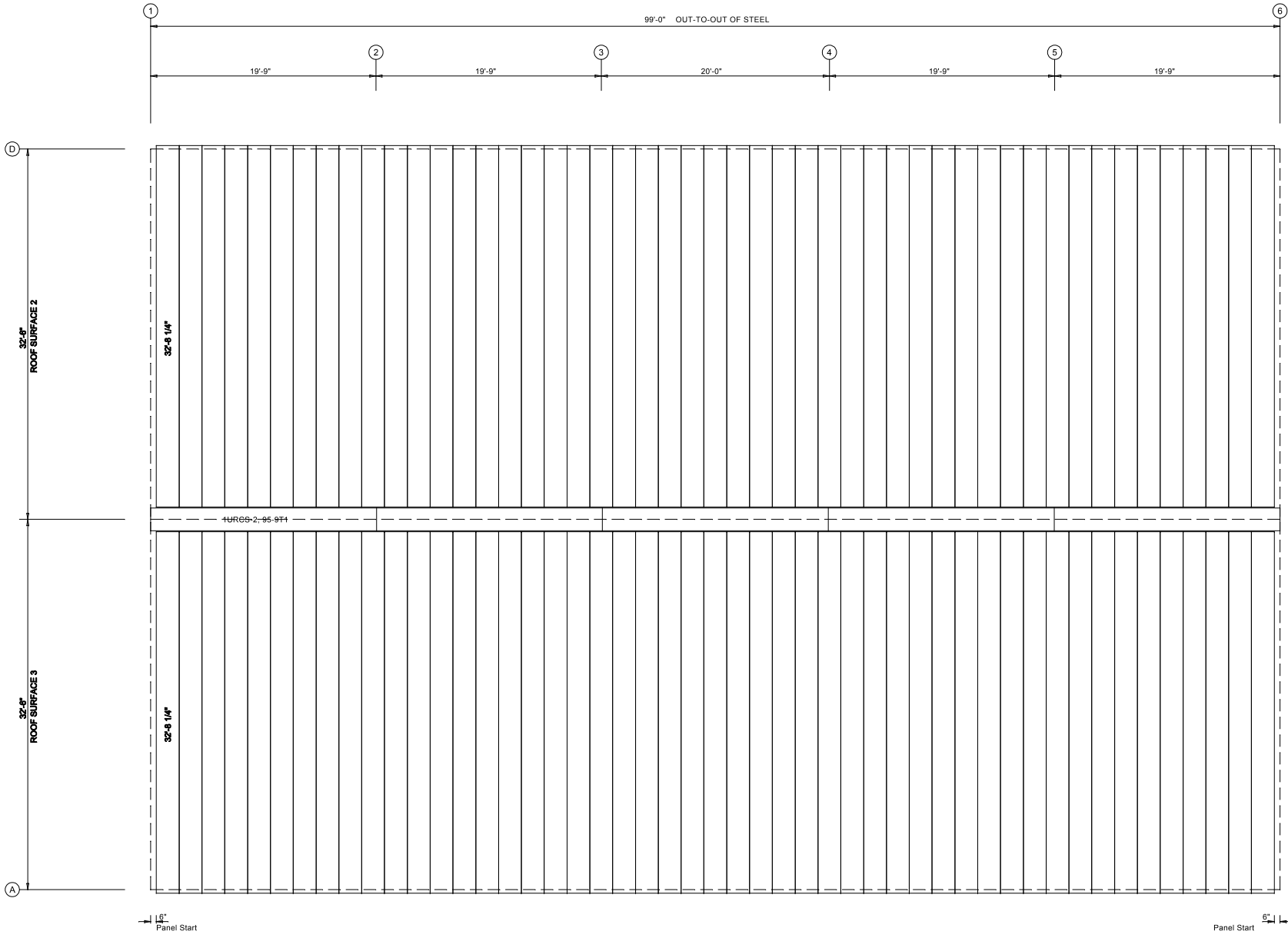
65x99
 65'-0" x 99'-0" x 26'-0"
 DATE: 7/9/24 REVISION: 0
 ENG: DWN: APPD:

F.O.41736-1-1

REVISION HISTORY	
REV.	DESCRIPTION

DRAWING STATUS
 THESE DRAWINGS HAVE BEEN GENERATED FOR VISUALIZATION PURPOSES ONLY. THEY ARE PRELIMINARY AND SHOULD NOT BE USED FOR CONSTRUCTION. FINAL DRAWINGS WILL BE ISSUED ONLY AFTER ALL COMMENTS HAVE BEEN ISSUED AND DESIGNATED FOR FABRICATION.

65x99



GENERAL NOTES:
 Panel "Start" and "End" dimensions must be followed for the proper installation of the gable trim(s) provided.

ROOF SHEETING PLAN
 PANELS: 24 Ga. L4 - Galvalume

DRAWING IS NOT TO SCALE



65x99
 65'-0" x 99'-0" x 26'-0"
 DATE: 7/9/24 REVISION: 0
 ENG: DWN: APPD:

F.O.41736-1-1

65x99

DRAWING STATUS
 THESE DRAWINGS HAVE BEEN GENERATED FOR VISUALIZATION PURPOSES ONLY. THEY ARE PRELIMINARY AND SHOULD NOT BE USED FOR CONSTRUCTION. FINAL DRAWINGS WILL BE ISSUED ON A SEPARATE SHEET PER 146 BEEN PLACED AND DESIGNATED FOR FABRICATION.

REVISION HISTORY

REV.	DESCRIPTION	DATE