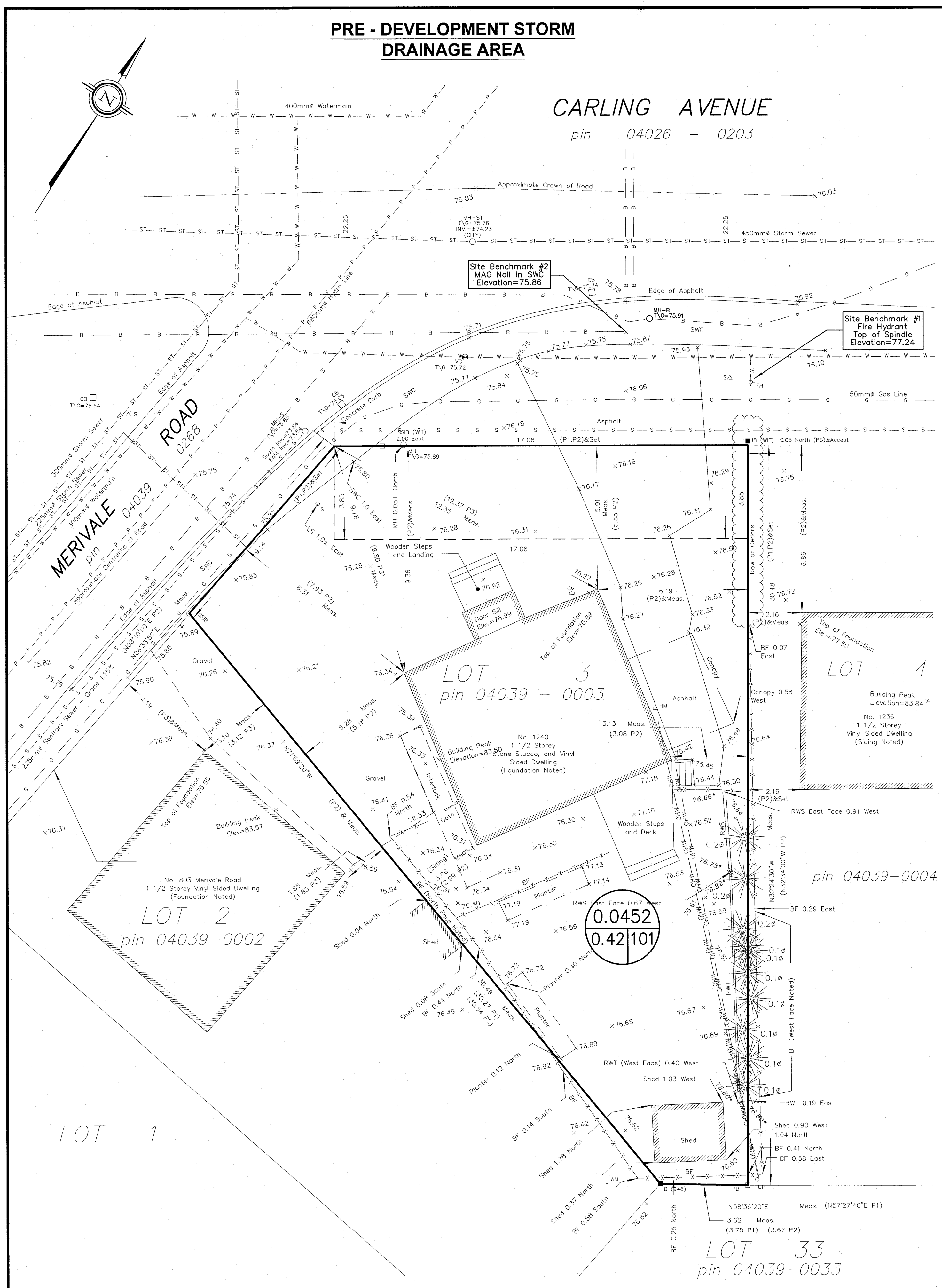


**PRE - DEVELOPMENT STORM DRAINAGE AREA**

**CARLING AVENUE**

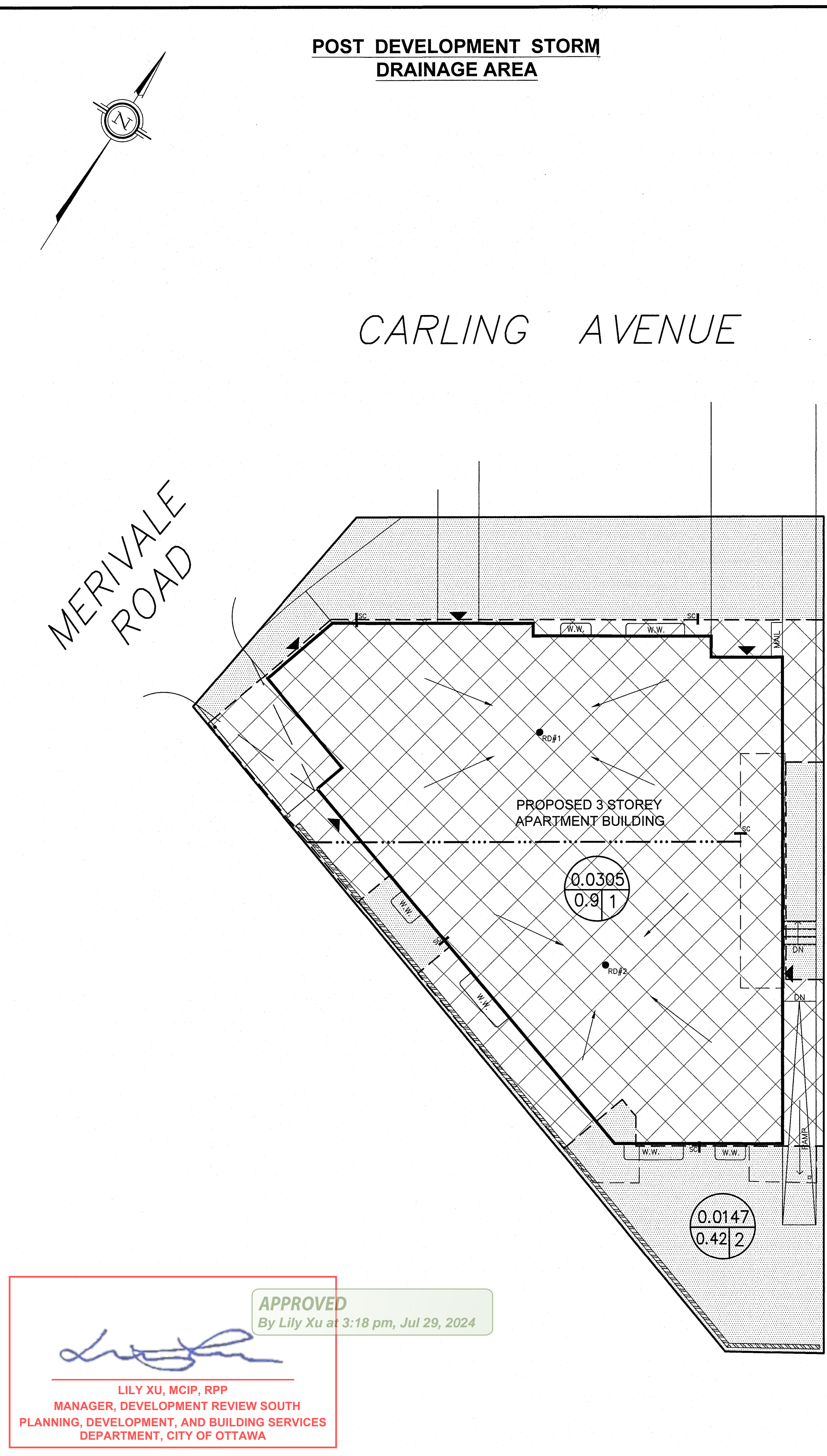
pin 04026 - 0203



**POST DEVELOPMENT STORM DRAINAGE AREA**

**CARLING AVENUE**

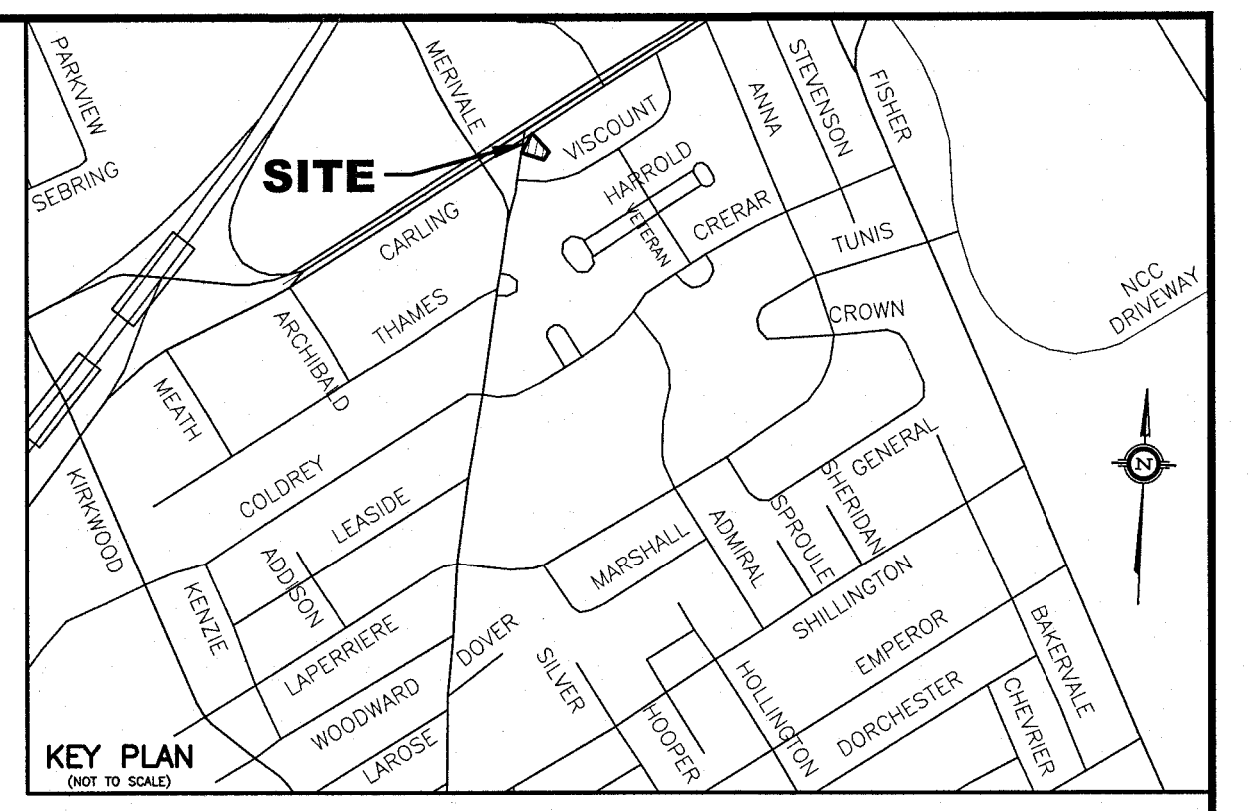
MERIVALE ROAD



**APPROVED**  
By Lily Xu at 3:18 pm, Jul 29, 2024

*Lily Xu*

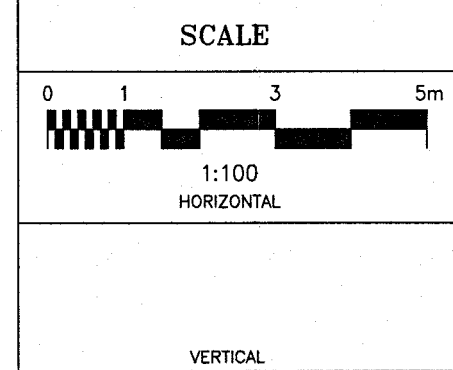
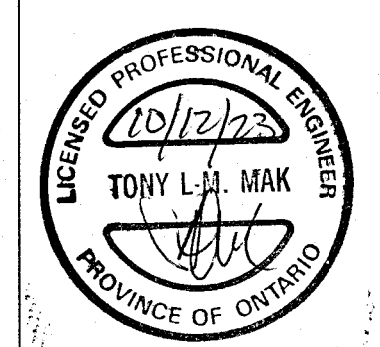
LILY XU, MCIP, RPP  
MANAGER, DEVELOPMENT REVIEW SOUTH  
PLANNING, DEVELOPMENT, AND BUILDING SERVICES  
DEPARTMENT, CITY OF OTTAWA



- LEGEND**
- RD#1 PROPOSED ROOF DRAIN NUMBER AND LOCATION
  - SC PROPOSED ROOF SCUPPER LOCATION
  - PROPOSED HIGH RIDGE LINE
  - 0.03/0.9/1 DRAINAGE AREA IN HECTARES  
DRAINAGE NODE NUMBER
  - COEFFICIENT OF RUNOFF
  - UN-CONTROLLED DRAINAGE AREA
  - CONTROLLED DRAINAGE AREA

- NOTES**
- NODE #1 REPRESENTS BUILDING ROOF AREA (SWM CONTROLLED AREA)
  - NODE #2 REPRESENTS UNCONTROLLED DRAINAGE AREA
  - NODE #101 REPRESENTS PRE-DEVELOPMENT DATA.

NO.	REVISION	DATE	BY
1	REVISIONS AS PER CITY'S REVIEW COMMENTS OF SEPTEMBER 16, 2023	09/20/23	TLM



DESIGN	T.L.M.
CHECKED	T.L.M.
DRAWN BY	P.M.
CHECKED	T.L.M.
APPROVED	T.L.M.

PROJECT  
1240 CARLING AVENUE  
LOT 3  
REGISTERED PLAN 267570  
CITY OF OTTAWA

DRAWING TITLE  
**STORM DRAINAGE AREA PLAN**

PROJECT No. 821-157		DATE APRIL 2023	DRAWING No. D-1
------------------------	--	--------------------	--------------------

T.L. MAK ENGINEERING CONSULTANTS LTD.  
CONSULTING ENGINEERS