

EXISTING TREE LIST

KEY	QTY	BOTANICAL NAME	COMMON NAME	SIZE	CONDITION	REMARKS	OWNERSHIP	COMMENTS
1	1	<i>Gleditsia triacanthos</i>	Honey Locust	160mm DBH	GOOD	To remain	780 Baseline Road	100% canopy
2	1	<i>Gleditsia triacanthos</i>	Honey Locust	160mm DBH	GOOD	To remain	780 Baseline Road	100% canopy
3	1	<i>Gleditsia triacanthos</i>	Honey Locust	170mm DBH	GOOD	To remain	780 Baseline Road	100% canopy
4	1	<i>Gleditsia triacanthos</i>	Honey Locust	170mm DBH	GOOD	To remain	780 Baseline Road	100% canopy
5	1	<i>Gleditsia triacanthos</i>	Honey Locust	300mm DBH	GOOD	To remain	780 Baseline Road	100% canopy
6	1	<i>Picea glauca</i>	White Spruce	220mm DBH	FAIR	To remain	780 Baseline Road	60% canopy
7	1	<i>Picea glauca</i>	White Spruce	340mm DBH	GOOD	To remain	780 Baseline Road	100% canopy
8	1	<i>Acer negundo</i>	Manitoba Maple	100mm DBH	GOOD	To remain	780 Baseline Road	100% canopy
9	1	<i>Acer negundo</i>	Manitoba Maple	100mm DBH	GOOD	To remain	780 Baseline Road	100% canopy
10	1	<i>Thuja occidentalis</i>	White Cedar Hedge	150-200mm DBH	GOOD	To remain	780 Baseline Road	Hedge is in good health
11	1	<i>Thuja occidentalis</i>	White Cedar Hedge	150-200mm DBH	GOOD	To remain	780 Baseline Road	Hedge is in good health
12	1	<i>Picea pungens</i>	Colorado Spruce	300, 320mm DBH	FAIR	To remain	City of Ottawa	90% canopy. Tree is leaning heavily to the east
13	1	<i>Picea pungens</i>	Colorado Spruce	310mm DBH	GOOD	To remain	City of Ottawa	100% canopy
14	1	<i>Picea pungens</i>	Colorado Spruce	330mm DBH	GOOD	To remain	City of Ottawa	100% canopy
15	1	<i>Picea pungens</i>	Colorado Spruce	250mm DBH	GOOD	To remain	City of Ottawa	100% canopy
16	1	<i>Picea pungens</i>	Colorado Spruce	280, 320mm DBH	GOOD	To remain	City of Ottawa	100% canopy
17	1	<i>Thuja occidentalis</i>	Eastern White Cedar	100-200mm DBH	GOOD	To be removed	7 Hilliard	Hedge is in good condition
18	1	<i>Picea pungens</i>	Colorado Spruce	340mm DBH	GOOD	To remain	City of Ottawa	100% canopy
19	1	<i>Picea pungens</i>	Colorado Spruce	290mm DBH	GOOD	To remain	City of Ottawa	100% canopy
20	1	<i>Picea pungens</i>	Colorado Spruce	330mm DBH	GOOD	To remain	City of Ottawa	100% canopy
21	1	<i>Picea pungens</i>	Colorado Spruce	280mm DBH	GOOD	To remain	City of Ottawa	100% canopy
22	1	<i>Picea pungens</i>	Colorado Spruce	320mm DBH	GOOD	To remain	City of Ottawa	100% canopy
23	1	<i>Picea pungens</i>	Colorado Spruce	350mm DBH	GOOD	To remain	City of Ottawa	100% canopy
24	1	<i>Picea pungens</i>	Colorado Spruce	340mm DBH	GOOD	To remain	City of Ottawa	100% canopy
25	1	<i>Picea pungens</i>	Colorado Spruce	340mm DBH	GOOD	To remain	City of Ottawa	100% canopy
26	1	<i>Picea pungens</i>	Colorado Spruce	360mm DBH	GOOD	To remain	City of Ottawa	100% canopy
27	1	<i>Picea pungens</i>	Colorado Spruce	260mm DBH	GOOD	To be removed	780 Baseline Road	100% canopy
28	1	<i>Juglans nigra</i>	Black Walnut	1400mm DBH	GOOD	To be removed	780 Baseline Road	90% canopy
29	1	<i>Pinus nigra</i>	Austrian Pine	510mm DBH	GOOD	To be removed	780 Baseline Road	90% canopy
30	1	<i>Pinus nigra</i>	Austrian Pine	420mm DBH	GOOD	To be removed	780 Baseline Road	90% canopy
31	1	<i>Pinus nigra</i>	Austrian Pine	310mm DBH	GOOD	To be removed	780 Baseline Road	95% canopy
32	1	<i>Picea glauca</i>	White Spruce	220mm DBH	GOOD	To be removed	780 Baseline Road	100% canopy
33	1	<i>Picea abies</i>	Norway Spruce	310mm DBH	GOOD	To be removed	780 Baseline Road	85% canopy
34	1	<i>Picea abies</i>	Norway Spruce	210mm DBH	GOOD	To be removed	780 Baseline Road	100% canopy - conflicting with new sanitary line
35	1	<i>Picea abies</i>	Norway Spruce	200mm DBH	GOOD	To be removed	780 Baseline Road	100% canopy - conflicting with new sanitary line
36	1	<i>Picea abies</i>	Norway Spruce	180mm DBH	GOOD	To be removed	780 Baseline Road	100% canopy - conflicting with new sanitary line
37	1	<i>Picea abies</i>	Norway Spruce	300mm DBH	GOOD	To be removed	780 Baseline Road	100% canopy - conflicting with new sanitary line
38	1	<i>Thuja occidentalis</i>	White Cedar	100-200mm DBH	GOOD	To be removed	780 Baseline Road	Hedge is in good condition
39	1	<i>Tilia cordata</i>	Littleleaf Linden	620mm DBH	GOOD	To be removed	City of Ottawa	95% canopy
40	1	<i>Tilia cordata</i>	Littleleaf Linden	160mm DBH	GOOD	To be removed	City of Ottawa	90% canopy
41	1	<i>Tilia cordata</i>	Littleleaf Linden	660mm DBH	FAIR	To be removed	City of Ottawa	100% canopy, coppice
42	1	<i>Tilia cordata</i>	Littleleaf Linden	480mm DBH	GOOD	To be removed	Jointly owned	60% canopy
43	1	<i>Tilia cordata</i>	Littleleaf Linden	480mm DBH	GOOD	To be removed	Jointly owned	80% canopy
44	1	<i>Tilia cordata</i>	Littleleaf Linden	220mm DBH	POOR	To remain	780 Baseline Road	50% canopy
45	1	<i>Tilia cordata</i>	Littleleaf Linden	270mm DBH	GOOD	To remain	780 Baseline Road	100% canopy
46	1	<i>Tilia cordata</i>	Littleleaf Linden	100mm DBH	FAIR	To remain	780 Baseline Road	65% canopy
47	1	<i>Acer glabrum</i>	Amur Maple	100mm DBH	FAIR	To remain	780 Baseline Road	65% canopy
48	1	<i>Tilia cordata</i>	Littleleaf Linden	2x300mm DBH	GOOD	To remain	780 Baseline Road	100% canopy
49	1	<i>Tilia cordata</i>	Littleleaf Linden	330mm DBH	GOOD	To remain	780 Baseline Road	100% canopy
50	1	<i>Tilia cordata</i>	Littleleaf Linden	240mm DBH	GOOD	To remain	780 Baseline Road	100% canopy
51	1	<i>Thuja occidentalis</i>	White Cedar	100-200mm DBH	GOOD	To remain	9 Hilliard	Hedge is in good condition
52	1	<i>Gleditsia triacanthos</i>	Honey Locust	170mm DBH	GOOD	To remain	780 Baseline Road	100% canopy
53	1	<i>Acer saccharinum</i>	Silver Maple	720mm DBH	FAIR	To remain	Jointly owned	100% canopy - condition appears to have deteriorated based on March 6, 2024 site visit
54	1	<i>Picea pungens</i> 'Glaucia'	Blue Spruce	150mm DBH	GOOD	To remain	7 Hilliard	100% canopy
55	1	<i>Aesculus hippocastanum</i>	Horse Chestnut	120mm DBH	GOOD	To remain	9 Hilliard	100% canopy - volunteer tree growing within hedge

1 TREE CONSERVATION REPORT & LANDSCAPE PLAN
SCALE: 1:500

40 YEAR CANOPY CALCULATION:

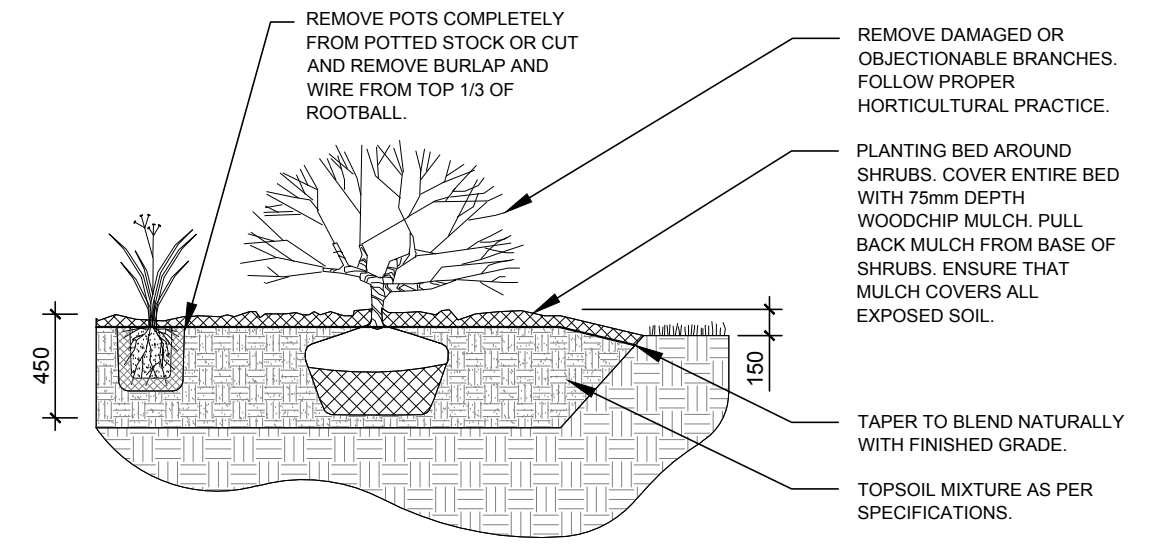
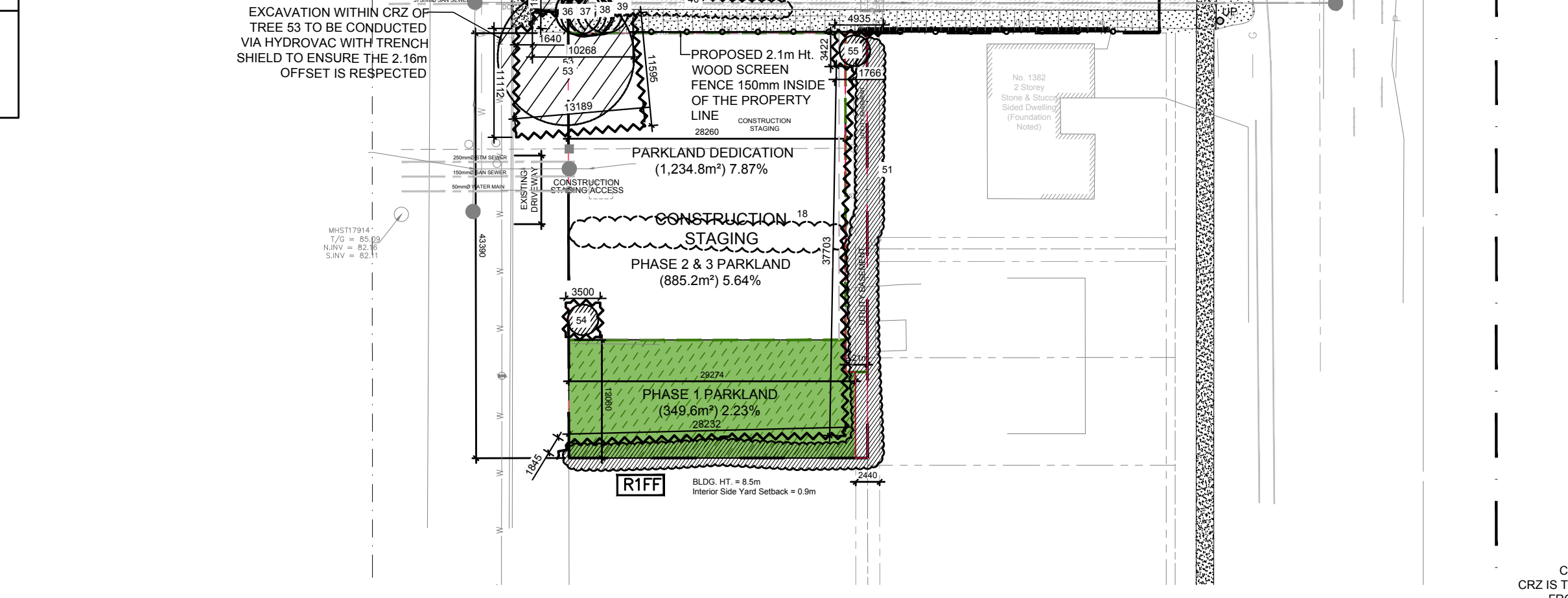
-3,470 m2 site area for phase 1

-6 Large deciduous trees proposed (154m2 ea.)
-5 medium trees proposed (79m2 ea.)
-1 columnar tree proposed (7m2)

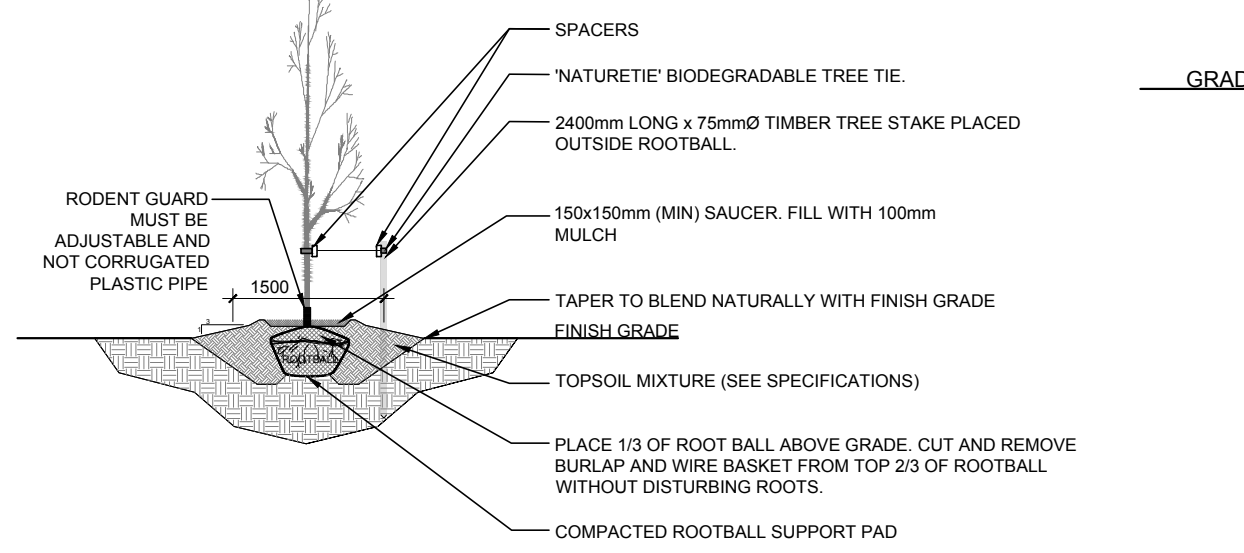
=1326m2 canopy cover =38.2% canopy cover

*Large deciduous tree calculated at 14m, medium deciduous trees at 10m and columnar tree at 3m spread

- GENERAL NOTES:**
- It is the responsibility of the appropriate contractor or official to report any errors, omissions or discrepancies on this plan with actual site conditions to the Landscape Architect before proceeding with construction.
 - The contractor is to notify all utility companies and authorities prior to any excavation and ascertain locations of underground services.
 - The contractor is to reinstate all areas and items damaged as a result of construction activity.
 - The contractor is to comply with all pertinent codes and by-laws.
 - The contractor is to maintain a positive surface run-off throughout the entire construction period.
 - The Landscape Architect is not responsible for subsurface conditions.
 - The contractor is to identify all existing trees to remain on site with the Landscape Architect prior to construction.
 - The contractor is to stake the proposed location of all plant material in conjunction with the Landscape Architect prior to excavation.
 - Minimum distances for selected trees are as follows:
 - Building Foundations 7.5m
 - Sidewalks 1.5m
 - Public Streets 2.5m
 - Underground Infrastructure 2.0m
 - Watermain 2.0m
 - All trees within 1m of underground utility trenches are to be excavated by hand.
 - Remove all protective wrapping from tree trunks after installation.
 - Staking of trees shall only be performed if necessary.
 - Ensure that mulch is pulled back a min. distance of 75mm from base of tree trunk.
 - All tree stakes and rodent guards are to be removed by the contractor at the end of the warranty period.
 - To ensure that no harm is caused to breeding birds, tree removal and vegetation clearing should be avoided during the migratory bird season (April 15 - August 15) as specified by The City of Ottawa's Environmental Impact Study Guidelines.
 - Parkland Dedication should not be used for stockpiling or staging of materials or construction equipment during demolition or construction activities in order to limit compaction of native soils.



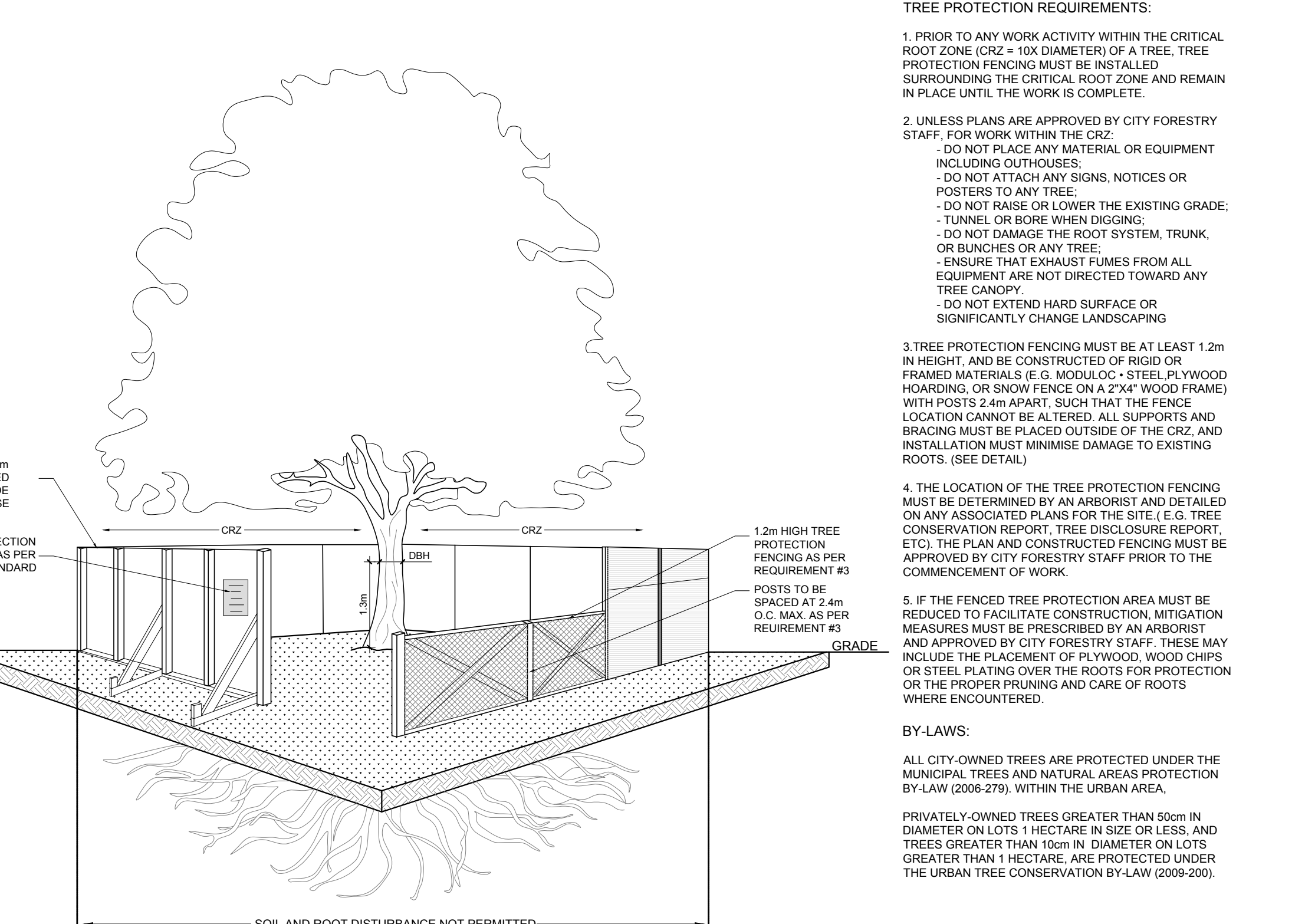
2 ORNAMENTAL GRASS PLANTING
SCALE: NTS



3 DECIDUOUS TREE PLANTING
SCALE: NTS

PROPOSED PLANT LIST

KEY	QTY	BOTANICAL NAME	COMMON NAME	SIZE	CONDITION	REMARKS
TREES						
AM	1	<i>Acer x freemanii</i> 'Armstrong'	Armstrong Maple	60mm cal.	B&B	
HB	3	<i>Celtis occidentalis</i>	Hackberry	60mm cal.	B&B	
HL	5	<i>Gleditsia triacanthos</i> 'Draves'	Street Keeper Honeylocust	60mm cal.	B&B	
FM	1	<i>Acer x freemanii</i>	Freeman's Maple	60mm cal.	B&B	
SM	2	<i>Acer saccharinum</i>	Sugar Maple	60mm cal.	B&B	
ORNAMENTAL GRASSES						
BL	14	<i>Leymus arenarius</i> 'Blue Dune'	Blue Dune Grass	250mm pot.	Potted	800mm o.c.
KF	28	<i>Calamagrostis</i> 'Karl Foerster'	Feather Reed Grass	250mm pot.	Potted	800mm o.c.
OD	16	<i>Calamagrostis</i> 'Overdam'	Overdam Grass	250mm pot.	Potted	800mm o.c.



4 TREE PROTECTION FENCE
SCALE: NTS

CLIENT:
THE BERGE HOMES

CONSULTANTS ARCHITECTS:
rla/architecture
roderick lahey architect inc.
56 beech street, ottawa, ontario K1S 3J6
t. 613.724.9932 f. 613.724.1209 rlaarchitecture.ca

CIVIL ENGINEERS:
MCINTOSH PERRY
115 Walgreen Road
Ottawa, ON K0A 1L0
Tel: (613) 838-2184
Fax: (613) 838-3742
Email: r.free@mcintoshperry.com

LEGEND

- REQUIRED SOIL VOLUME
- PROPOSED DECIDUOUS TREE
- PROPOSED ORNAMENTAL GRASSES
- PROPOSED SODDED GRASS AREA
- PROPOSED UNIT PAVERS TYPE 1
- PROPOSED UNIT PAVERS TYPE 2
- PROPOSED CONCRETE
- EXISTING TREE TO REMAIN
- EXISTING TREE TO BE REMOVED
- EXISTING HEDGE TO BE REMOVED
- EXISTING HEDGE TO REMAIN
- TREE PROTECTION FENCE

6	REVISED PER CITY COMMENTS	07/31/2024	ML	JL
5	REVISED PER CITY COMMENTS	05/16/2024	ML	JL
4	ISSUED FOR DISCUSSION	05/02/2024	ML	JL
3	REVISED PER CITY COMMENTS	04/09/2024	ML	JL
2	REVISED PER CITY COMMENTS	10/04/2023	ML	JL
1	ISSUED FOR SITE PLAN CONTROL	06/09/2023	ML	JL

JAMES B. LENNOX & ASSOCIATES INC.
LANDSCAPE ARCHITECTS
3333 CARLING AVE. OTTAWA, ONTARIO K2H 5A8
Tel: (613) 722-5168 Fax: (866) 343-3942

PROJECT
780 Baseline Rd
Ottawa, ON K2C 0A3

DRAWING
TREE CONSERVATION REPORT & LANDSCAPE PLAN

STAMP: ASSOCIATION OF LANDSCAPE ARCHITECTS OF ONTARIO

SCALE: AS SHOWN

START DATE: APRIL 2023

PROJECT NO.: 23TH2333

PROJECT NORTH

DRAWING NO.: **L.1**

PLOT SIZE ARCH-D