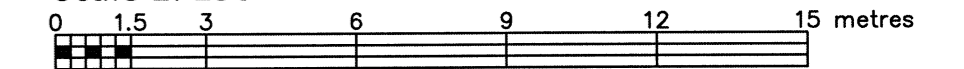


LOT 5 AND PART OF LOT 6 REGISTERED PLAN 7 CITY OF OTTAWA

FARLEY, SMITH & DENIS SURVEYING LTD. 2021

Scale 1: 150



Metric Note

Distances and coordinates on this plan are in metres and can be converted to feet by dividing by 0.3048.

Bearing Note

Bearings are grid and are referred to the southerly limit of Albert Street having a bearing of N 58° 28' 30" E as shown on Plan 5R-7832 and are referred to the Central Meridian of MTM Zone 9 (76°30' West Longitude) Nad-83 (Original).

Elevation Notes

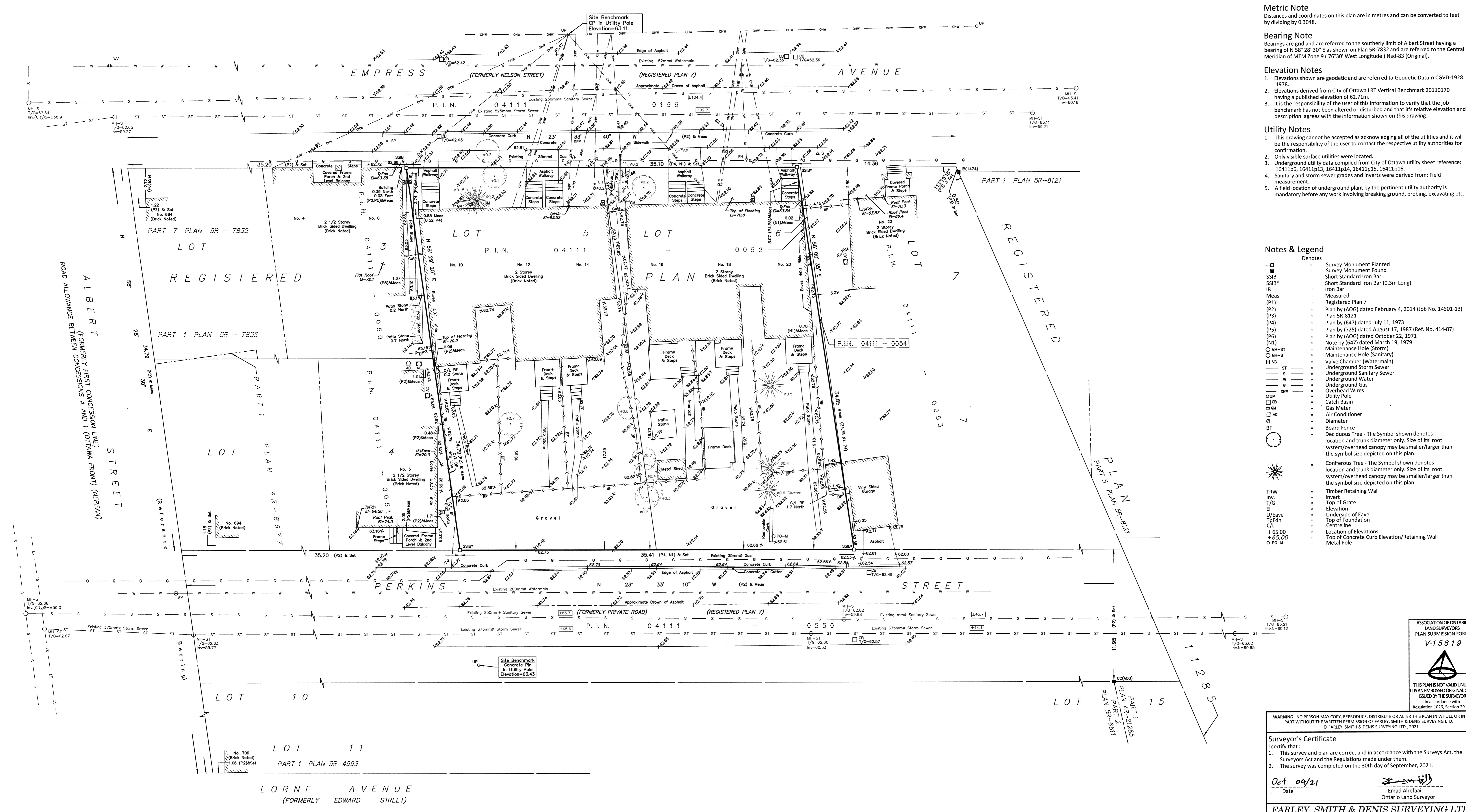
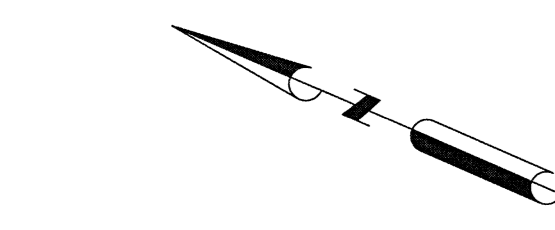
- 1. Elevations shown are geodetic and are referred to Geodetic Datum CGVD-1928 -1978.
2. Elevations derived from City of Ottawa LRT Vertical Benchmark 20110170 having a published elevation of 62.71m.
3. It is the responsibility of the user of this information to verify that the job benchmark has not been altered or disturbed and that its relative elevation and description agrees with the information shown on this drawing.

Utility Notes

- 1. This drawing cannot be accepted as acknowledging all of the utilities and it will be the responsibility of the user to contact the respective utility authorities for confirmation.
2. Only visible surface utilities were located.
3. Underground utility data compiled from City of Ottawa utility sheet reference: 16411p6, 16411p13, 16411p14, 16411p15, 16411p16.
4. Sanitary and storm sewer grades and inverts were derived from: Field measurement.
5. A field location of underground plant by the pertinent utility authority is mandatory before any work involving breaking ground, probing, excavating etc.

Notes & Legend

Table with 2 columns: Symbol and Description. Includes symbols for Survey Monument Planted, Short Standard Iron Bar, Registered Plan 7, etc.



Warning, Surveyor's Certificate, and Farley, Smith & Denis Surveying Ltd. contact information.

Association of Ontario Land Surveyors logo and registration number V-15619.