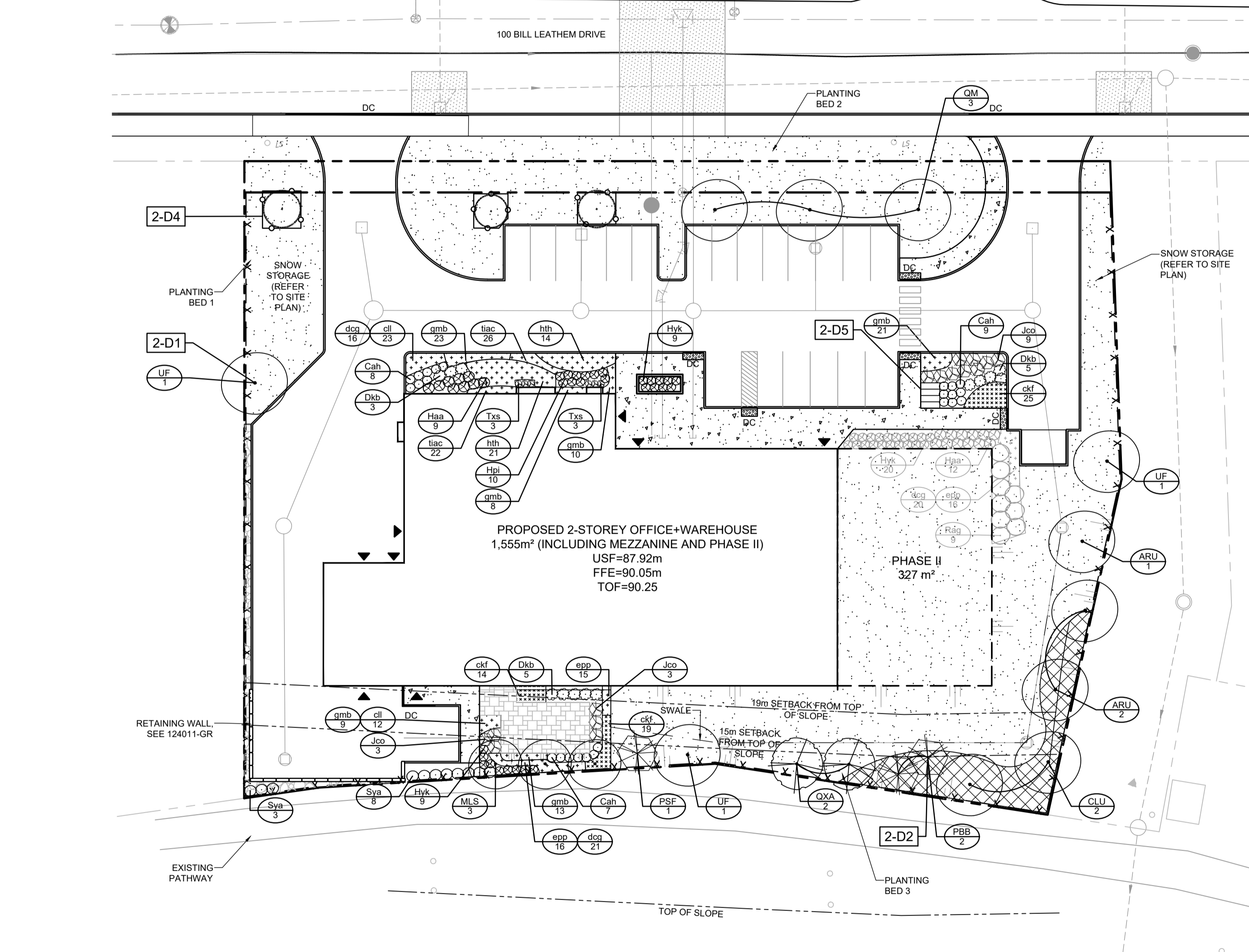


Planting bed no.	Available Soil Area (sq m)	Available Soil Volume (cu m)	No. of trees proposed				Existing trees (Large) (35m ²)	Total No. of trees	Min. required Soil volume total (cu m)
			Small/Column (25m ²)	Medium (30m ²)	Large (35m ²)	Evergreen (30m ²)			
			Soil calculations						
Planting bed 1	175.00	262.50	0	1	0	0	1	2	55.00
Planting bed 2	525.00	787.50					2	5	150.00
Planting bed 3	784.00	1,176.00	2	10	3	3	15	15	365.00

ESTIMATED CANOPY COVERAGE AT MATURITY				
SIZE OF TREE	AVERAGE MATURE SPREAD	CANOPY COVERAGE PER TREE (m ²)	QUANTITY OF TREES	TOTAL CANOPY COVERAGE (m ²)
Deciduous - Small/Column (<7.5m tall)	5m	20	2	39
Deciduous - Medium (7.5-14m tall)	10m	79	11	864
Deciduous - Large (14m+ tall)	15m	177	6	1060
Coniferous	5m	20	3	59
PROPOSED TOTAL CANOPY COVERAGE (m ²):				2022
TOTAL SITE AREA (m ²):				4,500
EST. CANOPY COVERAGE (%):				45%

Area of a circle = (r x r) x π
 Canopy coverage per tree calculation: (average mature spread/2) x (average mature spread/2) x π



NOTE: THE POSITION OF ALL POLE LINES, CONDUITS, WATERMANS, SEWERS AND OTHER UNDERGROUND AND OVERGROUND UTILITIES AND STRUCTURES IS NOT NECESSARILY SHOWN ON THE CONTRACT DRAWINGS, AND WHERE SHOWN, THE ACCURACY OF THE POSITION OF SUCH UTILITIES AND STRUCTURES IS NOT GUARANTEED. BEFORE STARTING WORK, DETERMINE THE EXACT LOCATION OF ALL SUCH UTILITIES AND STRUCTURES AND ASSUME ALL LIABILITY FOR DAMAGE TO THEM.

Owner: Continental Flooring Inc. - Holding Corp
 Dominik Szepeocz
 48A Colonnade Road North,
 Nepean, ON K2E 7J8
 Phone: (613) 852-9911

NOT FOR CONSTRUCTION

%	QTY	BOTANICAL NAME	COMMON NAME	SIZE	COND	SPACING	HT	SPR
Deciduous Shrubs								
20%	11	<i>Clethra alnifolia</i>	Summersweet	0.60m HT	BR	1.5m O.C.	2.0	1.2
15%	9	<i>Cephalanthus occidentalis</i>	Butterfly Bush	0.60m HT	BR	1.5m O.C.	2.0	2.0
15%	9	<i>Comptonia peregrina</i>	Sweet Fern	0.60m HT	PT	1.5m O.C.	1.0	2.0
5%	3	<i>Myrica gale</i>	Sweet Gale	0.60m HT	BR	1.5m O.C.	1.3	1.0
15%	9	<i>Rosa blanda</i>	Meadow Rose	0.60m HT	BR	1.5m O.C.	1.5	2.0
15%	9	<i>Spiraea alba</i>	White Meadowsweet	0.60m HT	BR	1.5m O.C.	1.5	1.5
15%	9	<i>Symphoricarpos albus</i>	Snowberry	0.60m HT	BR	1.5m O.C.	3.0	2.5

GENERAL

- Read and interpret this drawing/drawing set in conjunction with all the contract details and specifications, including related civil, utility, structural, architectural, mechanical, electrical, environmental, geotechnical, and survey information.
- The Contractor is to determine the exact location, size, material, and elevation of all existing utilities prior to commencing construction. Protect and assume responsibility for all existing utilities regardless of being shown on the drawings.
- It is essential to use the plans and details in conjunction with the specifications and notes.
- Do not scale drawings. Work to dimensions only.
- Protect all existing and retained vegetation for the duration of construction according to the contract details and specifications.
- Reinstate all areas and items damaged or disturbed, beyond the Limit of Work, because of construction activities, including but not limited to construction staging areas, haul roads, stockpiles, etc. to the satisfaction of the Consultant. Unless otherwise noted, Contractor is to reinstate all areas to pre-construction condition or better to the satisfaction of the Contract Administrator.

CITY DETAILS

Related details from City of Ottawa Standard Tender Documents Volume No. 2 Standard Detail Drawings.

- F9 Chain Link Fence
- SC4 Typical Concrete Sidewalk in Boulevard
- SC5 Sidewalk Construction Joints

NOVATECH DETAILS

Found on Sheet L2.

- D1 Standard Deciduous Tree Planting
- D2 Standard Coniferous Tree Planting
- D3 Shrub and Perennial Planting
- D4 Tree Protection Fence
- D5 Bike Layout
- D6 Naturalization Planting

TREE PLANTING IN SENSITIVE CLAY

- The landscape plans have been developed in accordance with the Geotechnical Investigation Final Report, Daniel Wall, May 29, 2024, which includes the letter/memo Daniel Wall, May 29, 2024, and map Borehole Location Plan, May 2, 2024 that confirms the categories and locations of clay soils.
- The following City of Ottawa clay soils guideline applies: Guidelines for Tree Planting in Sensitive Marine Clay Soils (2017)
- The soil volumes provided are sufficient for a reasonable chance of tree survival. Unless otherwise noted, all new trees on City property meet the minimum soil volume requirements of the following, based on a depth of 1.5m below finished grade, and subtracting the volume of utility trenches.

- Small tree (mature height up to 7.5m) - 20m³ minimum soil volume provided.
- Medium tree (mature height 7.5-14m) - 25m³ minimum soil volume provided.
- Two (2) small trees - 12m³ minimum soil volume provided per tree.
- Two (2) medium trees - 15m³ minimum soil volume provided per tree.

PRODUCT INFORMATION

Install products as per manufacturer specifications. Shop drawings required.

PAVERS

- Antline by Unilock
 - Location: Back Patio
 - Size: Mixed
 - Pattern: Linear
 - Colour: Sterling

SITE FURNITURE

- 400 Cluster Seating by Maglin
 - Product Number: MTB-0400-00026
 - Size: 72.75" Length
 - Frame Colour: Gunmetal
 - Slats: Ipe
 - Options: Surface mount, Umbrella Hole
- 2300 Series Bike Rack by Maglin
 - Product Number: MBR-2300-00001
 - Frame Colour: Gunmetal
 - Options: Surface mount

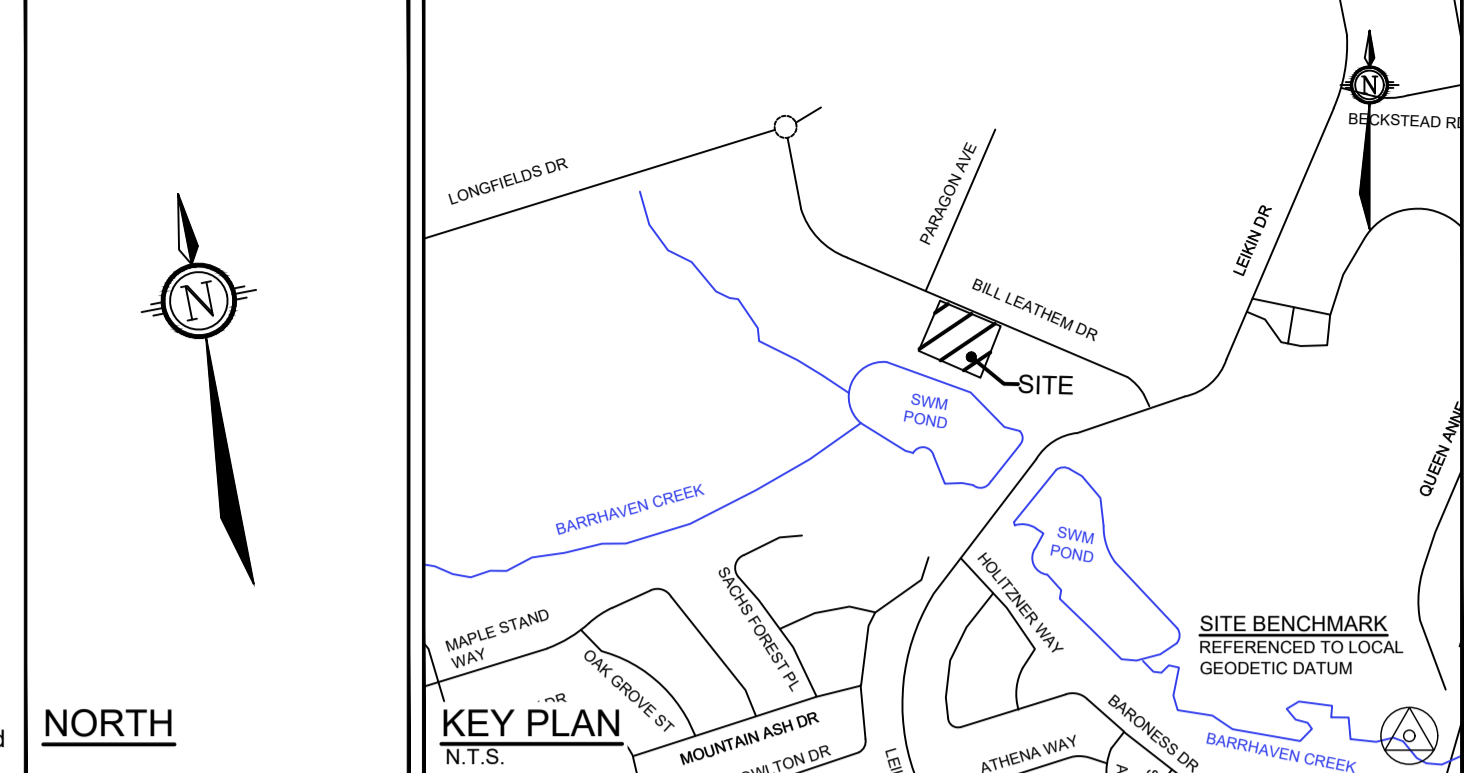
LEGEND

3-D1 DETAIL SHEET # NOVATECH OR CITY E.G. L1, L2, ETC. DETAIL NUMBER SEE LIST FOR CODE

- PROPOSED CONCRETE
- PROPOSED PAVERS
- RIVER STONE
- SOD
- PERENNIALS
- FUTURE PERENNIALS
- ORNAMENTAL GRASSES
- SHRUB NATURALIZATION
- PROPOSED DECIDUOUS TREE
- PROPOSED CONIFEROUS TREE
- EXISTING TREE TO REMAIN (SYMBOL SCALED TO MATCH CRITICAL ROOT ZONE)
- PROPOSED SHRUBS
- PROPOSED FUTURE SHRUBS
- QUANTITY (SEE PLANT LIST)
- QUANTITY - FUTURE (SEE FUTURE PLANT LIST)
- QUANTITY - FUTURE
- PROPOSED CHAINLINK FENCE 1.5m HT
- TREE PROTECTION FENCE

FUTURE PLANT LIST

KEY	QTY	BOTANICAL NAME	COMMON NAME	SIZE	COND	SPACING	Native Status
Deciduous Shrubs							
Hyk	20	<i>Hypericum kalmianum</i>	Kalm's St. John's Wort	60cm HT	PT	80cm O.C.	Native
Haa	12	<i>Hydrangea arborescens 'Annabelle'</i>	Annabelle Hydrangea	60cm HT	PT	100cm O.C.	Non Native
Rag	9	<i>Rhus aromatica 'Gro-Low'</i>	Gro-Low Fragrant Sumac	60cm HT	PT	160cm O.C.	Native/Cultivar
Perennials							
epp	16	<i>Echinacea purpurea</i>	Purple Coneflower	1g	PT	30cm O.C.	Native
Ornamental Grasses							
dca	20	<i>Deschampsia cespitosa 'Goldtau'</i>	Gold Dew Tufted Hair Grass	1g	PT	50cm O.C.	Native/Cultivar



TREE PROTECTION

Implement the following protection measures for retained trees, both on site and on adjacent sites, prior to any work activity, including tree removal. Maintain tree protection fence in place and in good condition for the duration of site works:

- The Landscape Architect or Certified Arborist is to determine the location of the tree protection fencing and detail it on any associated plans for the site (e.g. tree conservation report, tree disclosure report, etc.).
- Under the guidance of a Landscape Architect or Certified Arborist, erect a fence at the critical root zone (CRZ) of trees. Diameter at breast height (DBH) is the trunk diameter measured at 1.3m height on the tree trunk. The CRZ is calculated as DBH x 10. Refer to the Tree Protection Fence detail.
- Refer to the Landscape Plan for fence location. City Forestry Staff are to approve both the plan and the installed fence prior to work commencement.
- Do not place any material or equipment within 2m of the CRZ of any tree, including outhouses.
- Do not attach any signs, notices, or posters to any tree.
- Do not disturb, raise, or lower the existing grade within the CRZ without approval.
- Only tunnel or bore when digging within the CRZ of a tree. Hand work only where required within the CRZ; absolutely no machinery permitted.
- Do not damage the root system, trunk, or branches, or any tree.
- Do not extend hard surface or significantly change landscaping.
- Ensure that exhaust fumes from all equipment are directed away from any tree canopy.
- When trees marked for removal overlap with the CRZ of trees marked for preservation: cut roots at the edge of the CRZ and grind down stumps after tree removals, do not pull out stumps. Ensure there is not root pulling or disturbance of the ground within the CRZ.
- Prior to work taking place, notify and consult the Landscape Architect and City Forestry Staff if roots must be cut. Roots 20mm or larger should be cut at right angles with clean, sharp horticultural tools without tearing, crushing, or pulling. Refer to City of Ottawa Specification S.P. F-8011 Tree Protection, Excavation of Root Zone.
- If damaged or objectionable branches are observed, consult the Landscape Architect, before any work is conducted. Do not prune leaders. Do not prune more than 1/4 of crown.
- Set up a water and fertilizing program, if trees are being affected by site works, to the satisfaction of the Landscape Architect.
- The Landscape Architect is to prescribe mitigation measures if the protected fenced area must be reduced to facilitate construction. Measures may include the placement of plywood, wood chips, or steel plating over the roots for protection. City Forestry Staff are to approve said measures prior to fence movement.
- City of Ottawa By-law: Protects municipal trees and municipal natural areas in the City of Ottawa and trees on private property in the urban area of the City of Ottawa (2020-340).

PLANT LIST

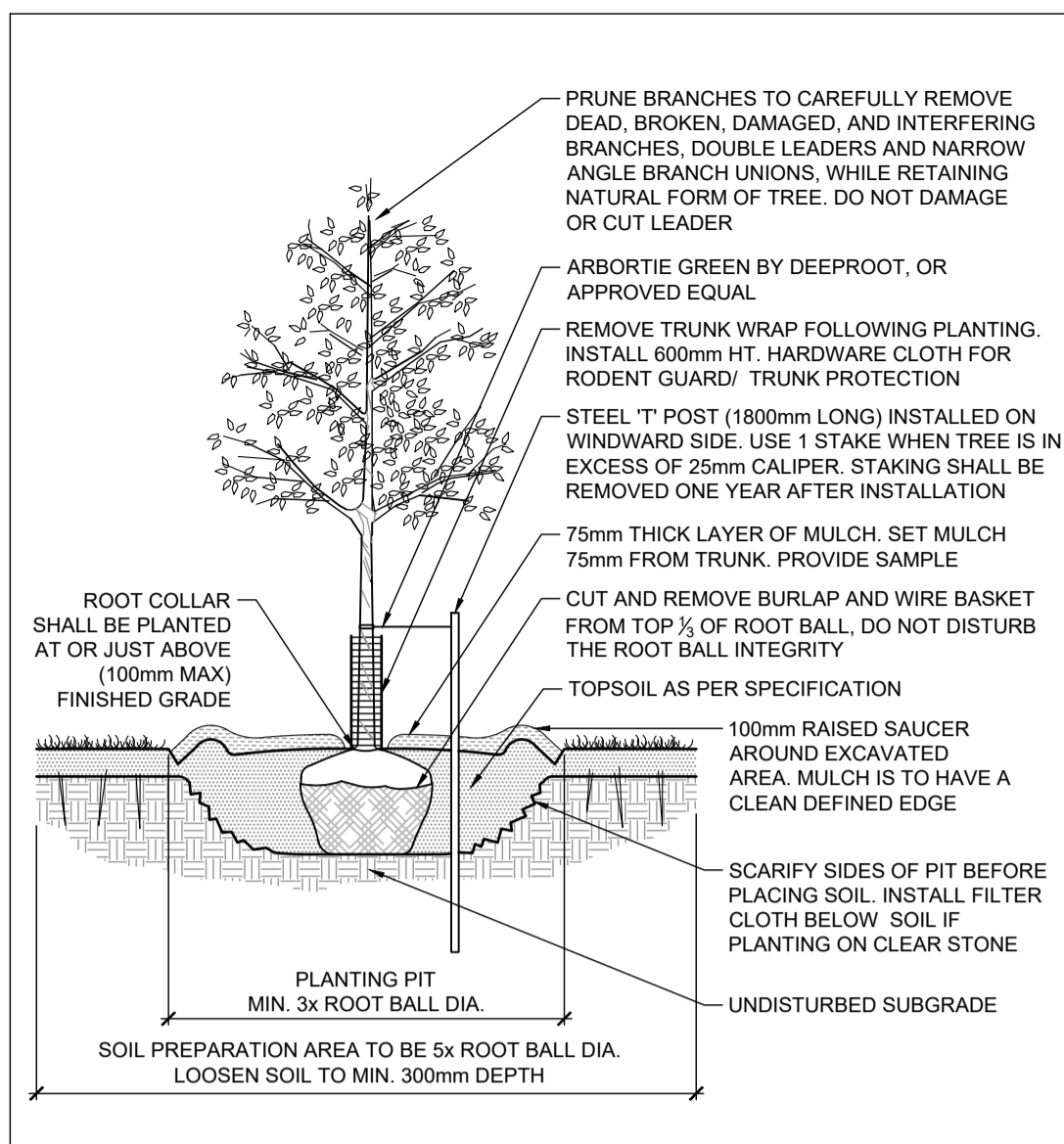
KEY	QTY	BOTANICAL NAME	COMMON NAME	SIZE	COND	SPACING	Native Status
Coniferous Trees							
PBB	2	<i>Picea pungens 'Baby Blue'</i>	Baby Blue Colorado Spruce	200cm HT	WB	As Show'n	Non Native
PSF	1	<i>Pinus strobus 'Fastigiata'</i>	Columnar White Pine	200cm HT	WB	As Show'n	Native/Cultivar
Deciduous Trees							
ARU	3	<i>Acer rubrum 'Autumn Radiance'</i>	Autumn Radiance Red Maple	50mm Cal	WB	As Show'n	Native/Cultivar
CLU	2	<i>Cedraspis kentukea (formerly 'lutea')</i>	Yellowwood	50mm Cal	WB	As Show'n	Non Native
MLS	3	<i>Malus 'Spring Snow'</i>	Spring Snow Crabapple	50mm Cal	WB	As Show'n	Non Native
QM	2	<i>Quercus macrocarpa</i>	Burr Oak	50mm Cal	WB	As Show'n	Native
QXA	2	<i>Quercus x alba x robur 'Streetspire' (JFS-KW/QX)</i>	Streetspire Oak	50mm Cal	WB	As Show'n	Native/Cultivar
UF	3	<i>Ulmus americana 'Frontier'</i>	Frontier Elm	50mm Cal	WB	As Show'n	Native/Cultivar
Coniferous Shrubs							
Jco	15	<i>Juniperus horizontalis 'Plumosa Compacta'</i>	Compact Andorra Juniper	40cm Spr	PT	140cm O.C.	Native/Cultivar
Txs	6	<i>Taxus x media 'Stonehenge Skippy' (SMNTHDPF)</i>	Stonehenge Skippy Yew	2g	PT	50cm O.C.	Non Native
Deciduous Shrubs							
Cah	24	<i>Clethra alnifolia 'Hummingbird'</i>	Hummingbird Summersweet	30cm HT	PT	80cm O.C.	Native/Cultivar
Dkb	13	<i>Diervilla x kodak Black 'SMNDRSF'</i>	Kodak Black Honeysuckle	60cm HT	PT	100cm O.C.	Native/Cultivar
Haa	9	<i>Hydrangea arborescens 'Annabelle'</i>	Annabelle Hydrangea	60cm HT	PT	100cm O.C.	Non Native
Hpi	10	<i>Hydrangea paniculata 'Tivobo'</i>	Bobo Dv ar Hydrangea	60cm HT	PT	70cm O.C.	Non Native
Hyk	18	<i>Hypericum kalmianum</i>	Kalm's St. John's Wort	40cm HT	PT	80cm O.C.	Native
Sya	11	<i>Symphoricarpos albus</i>	Snowberry	40cm HT	PT	100cm O.C.	Native
Perennials							
cl	35	<i>Coroepsis lanceolata</i>	Lance-Leaved Tickseed	1g	PT	30cm O.C.	Native
epp	31	<i>Echinacea purpurea</i>	Purple Coneflower	1g	PT	40cm O.C.	Native
hth	35	<i>Hosta 'Halcyon'</i>	Halcyon Hosta	1g	PT	80cm O.C.	Non Native
Groundcovers							
gmb	84	<i>Geranium macrorrhizum 'Bevans'</i>	Bevans Variety	1g	PT	50cm O.C.	Non Native
tiac	48	<i>Tiarella x Sugar and Spice'</i>	Sugar and Spice Foam Flower	1g	PT	40cm O.C.	Native/Cultivar
Ornamental Grasses							
clf	58	<i>Calamagrostis acutiflora 'Karl Foerster'</i>	Karl Foerster Feather Reed Grass	1g	PT	60cm O.C.	Non Native
dca	37	<i>Deschampsia cespitosa 'Goldtau'</i>	Gold Dew Tufted Hair Grass	1g	PT	50cm O.C.	Native/Cultivar

SCALE 1:300 0 3 6 9 12	DESIGN	FOR REVIEW ONLY	LOCATION CITY OF OTTAWA 100 BILL LEATHAM DRIVE
	CHECKED		
	DRAWN		
	APPROVED		
2. REVISED PER CITY COMMENTS	AUG 22/24	KEW	DRAWING NAME LANDSCAPE PLAN
1. ISSUED FOR SITE PLAN APPLICATION	MAY 31/24	KEW	
No.	REVISION	DATE	BY

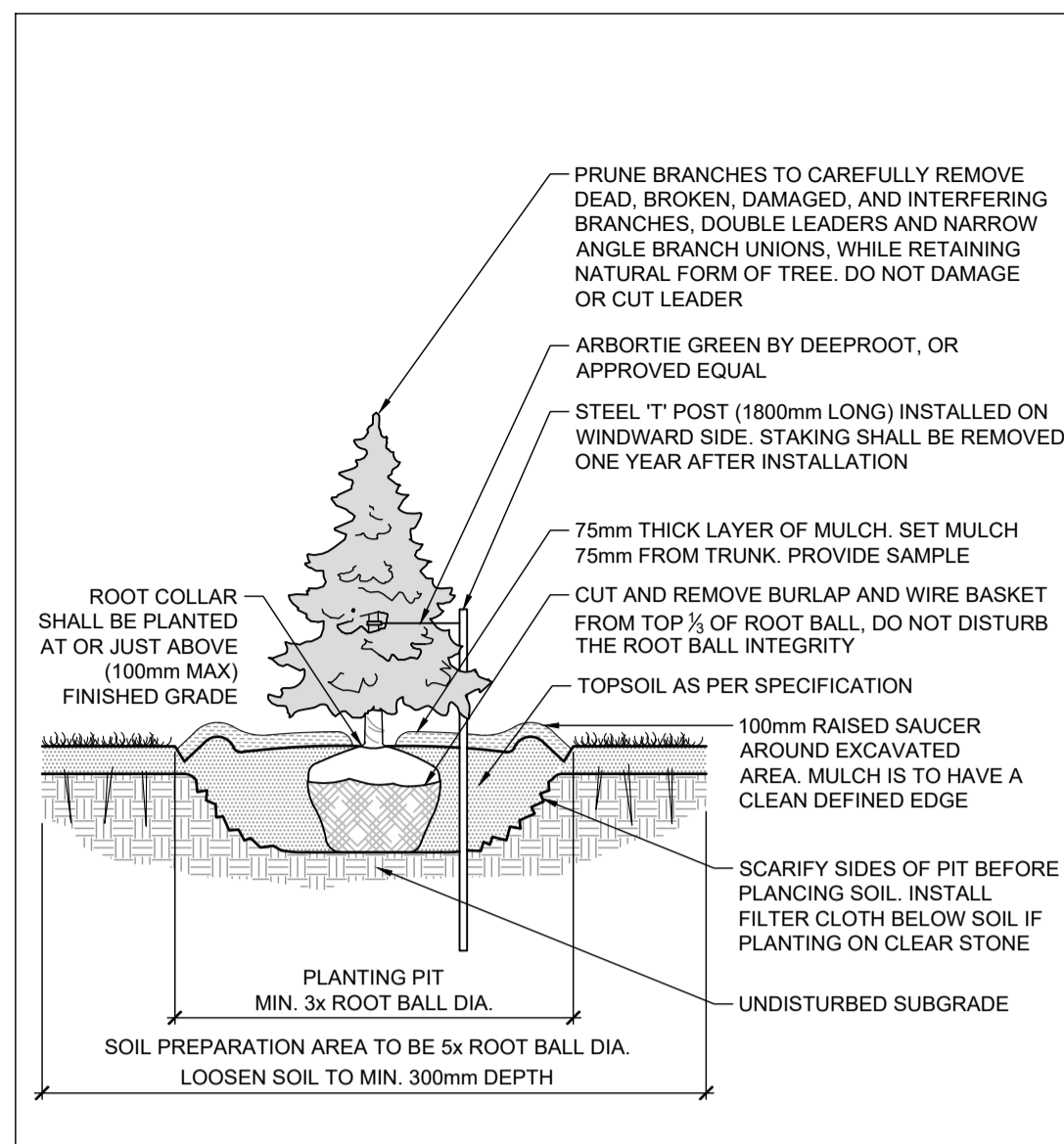
NOVATECH
 Engineers, Planners & Landscape Architects
 Suite 200, 240 Michael Cowpland Drive
 Ottawa, Ontario, Canada K2M 1P6
 Telephone: (613) 254-9643
 Facsimile: (613) 254-5867
 Website: www.novatech-eng.com

PROJECT No.	124011
REV	REV # 2
DRAWING No.	124011-L1

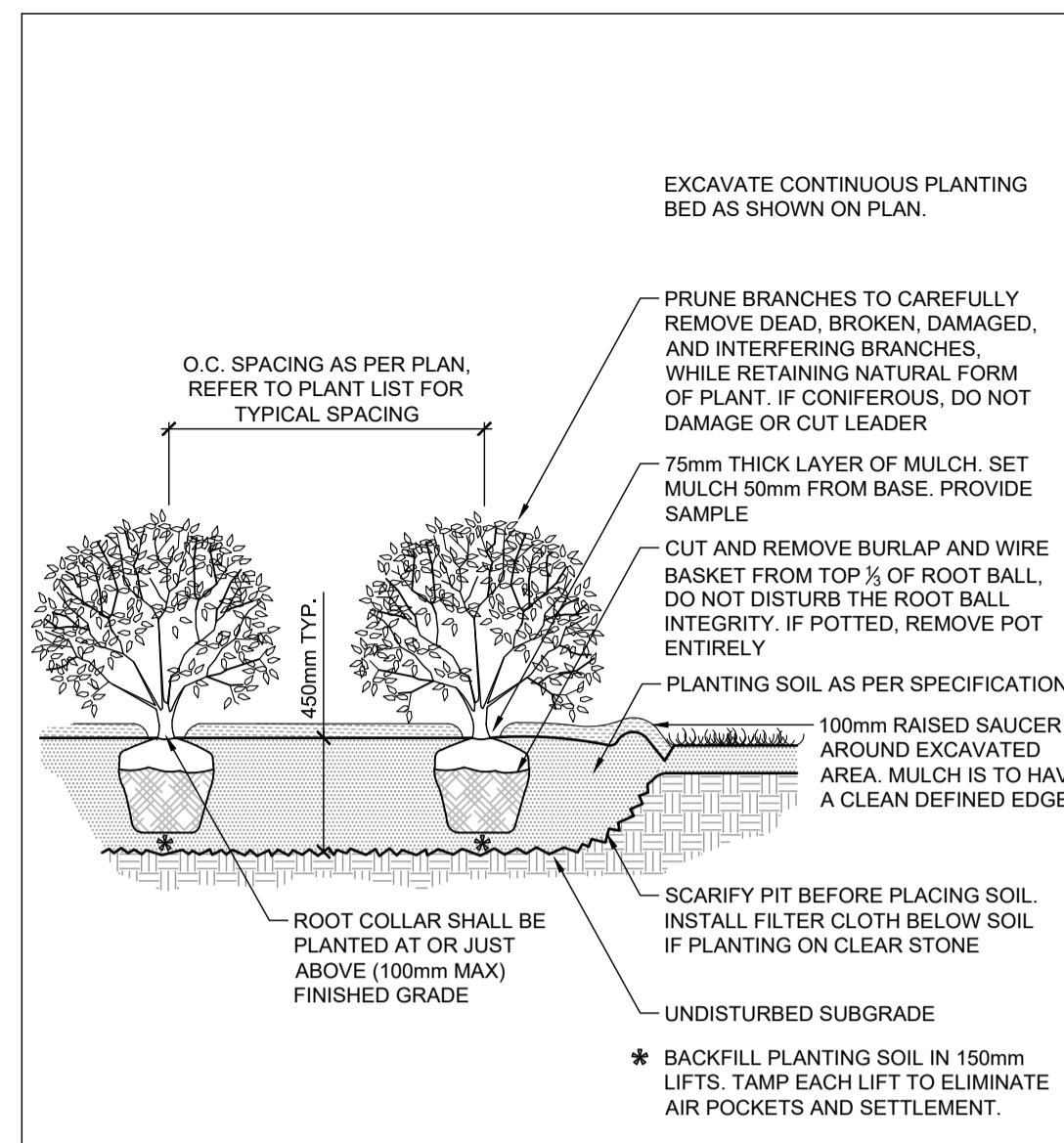
M:\2024\124011\CADD\landscapes\124011_L.dwg, L1 (landscape), Aug 22, 2024, 2:58pm, kwatson



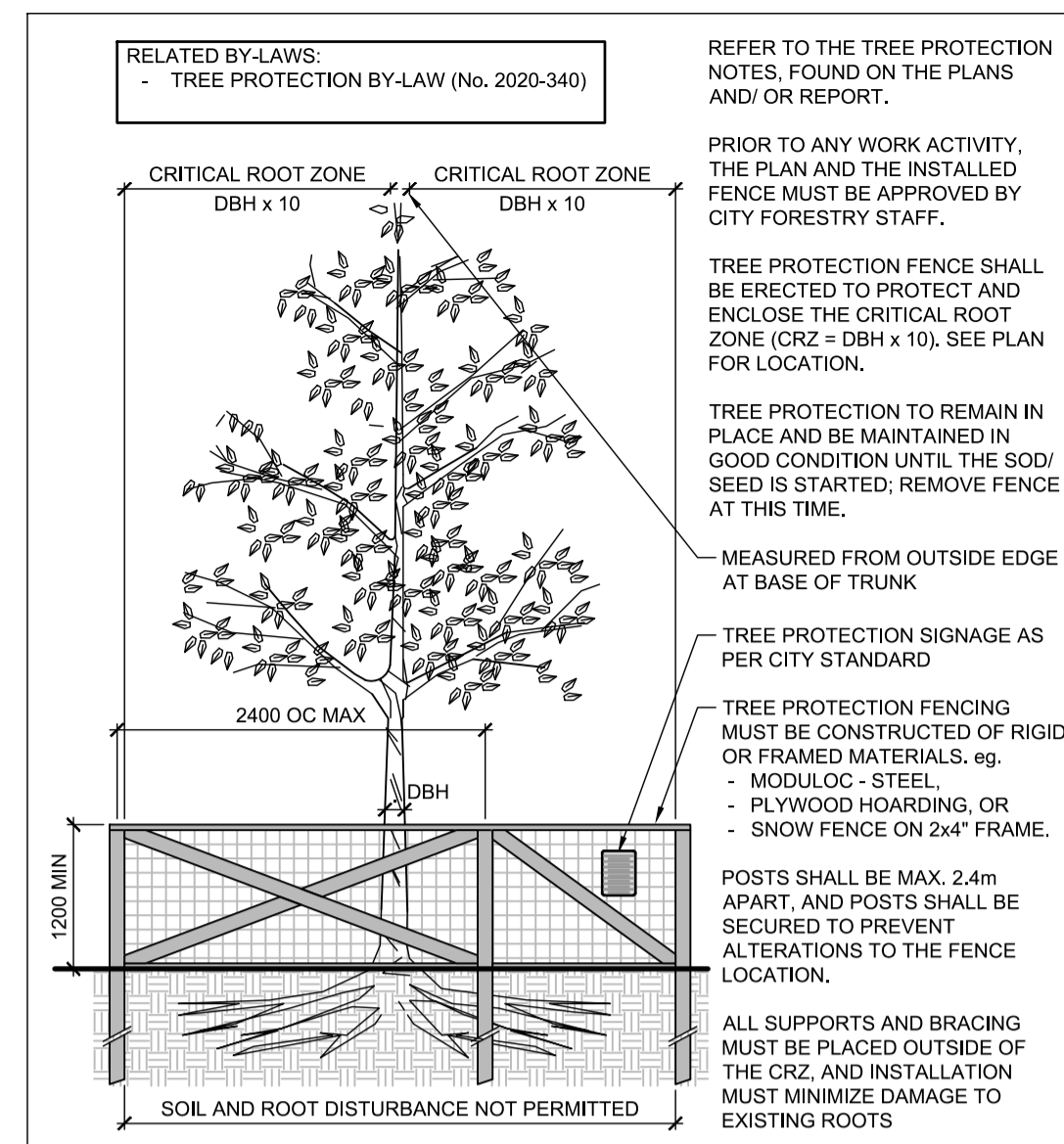
STANDARD DECIDUOUS TREE PLANTING D1



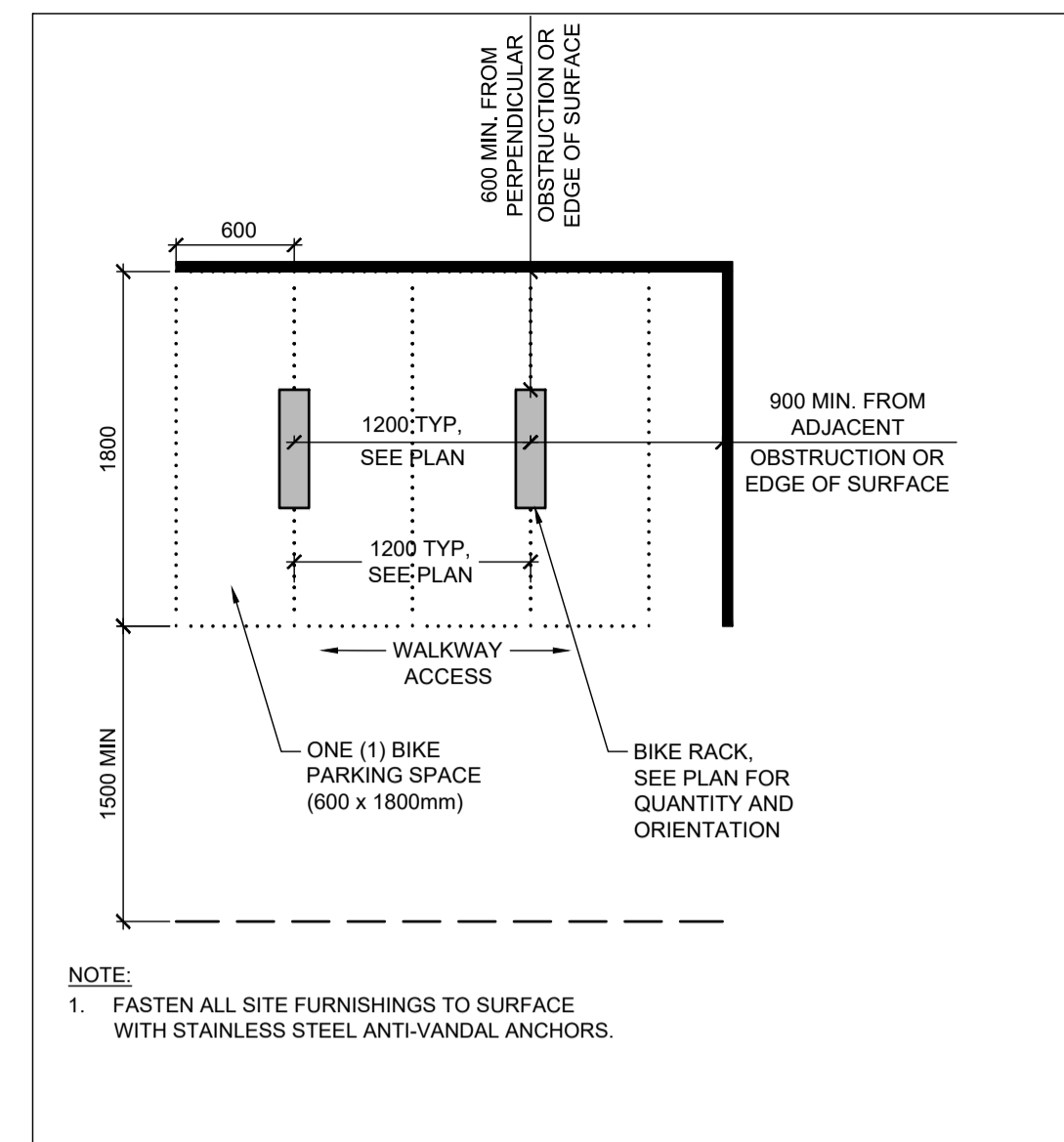
STANDARD CONIFEROUS TREE PLANTING D2



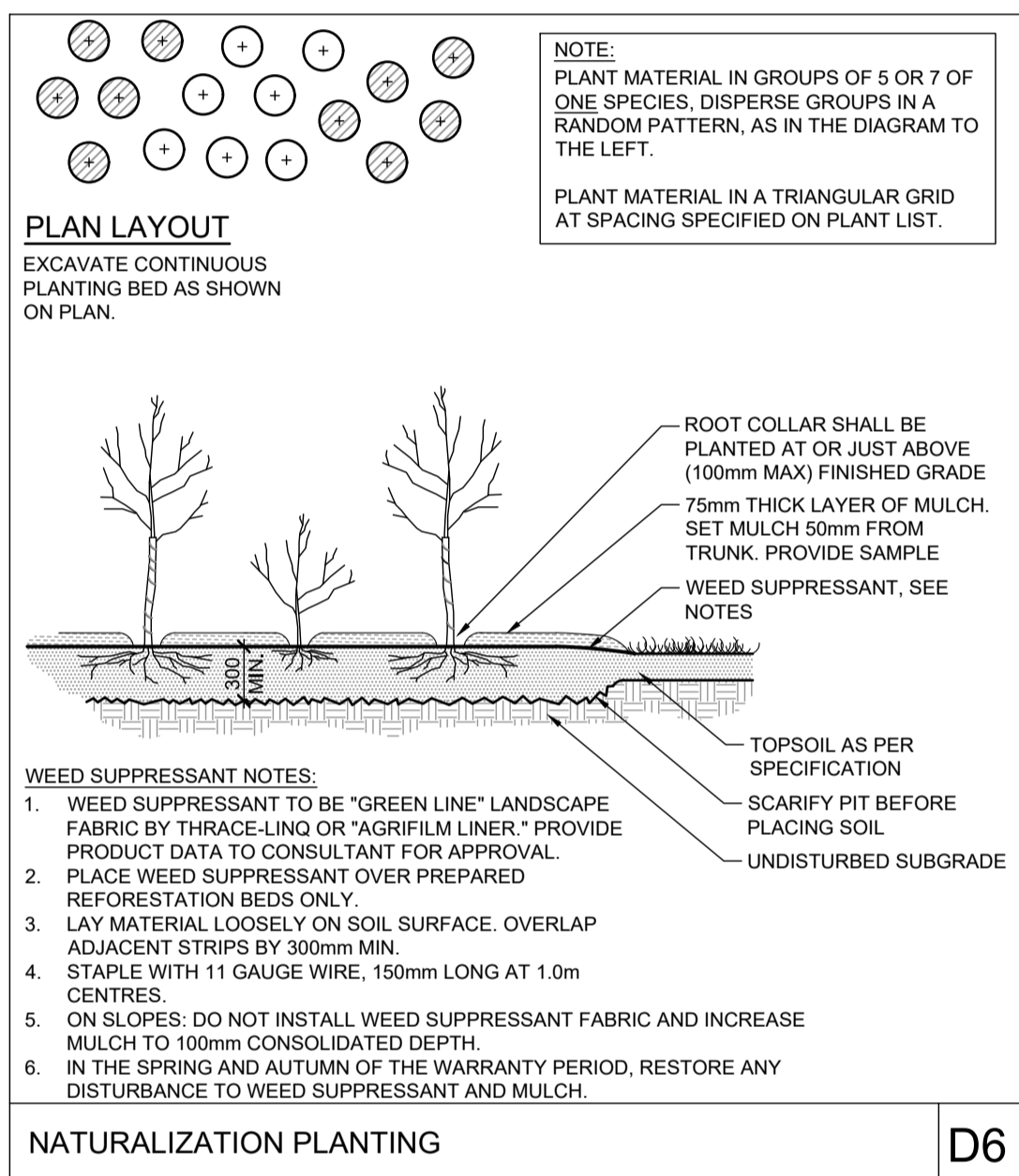
SHRUB AND PERENNIAL PLANTING D3



TREE PROTECTION FENCE D4



BIKE LAYOUT D5



NOTE:
THE POSITION OF ALL POLE LINES, CONDUITS, WATER MAINS, SEWERS AND OTHER UNDERGROUND AND OVERGROUND UTILITIES AND STRUCTURES IS NOT NECESSARILY SHOWN ON THE CONTRACT DRAWINGS, AND WHERE SHOWN, THE ACCURACY OF THE POSITION OF SUCH UTILITIES AND STRUCTURES IS NOT GUARANTEED. BEFORE STARTING WORK, DETERMINE THE EXACT LOCATION OF ALL SUCH UTILITIES AND STRUCTURES AND ASSUME ALL LIABILITY FOR DAMAGE TO THEM.

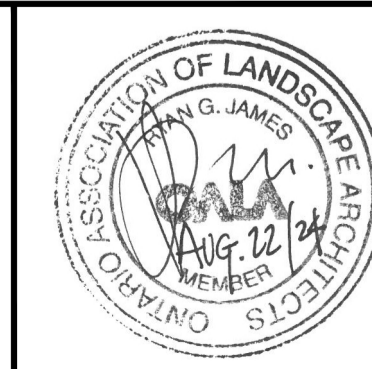
Owner:
Continental Flooring Inc - Holding Corp
Dominik Sepowicz
48A Colonnade Road North,
Nepesin, ON K2E 7J6
Phone: (613) 852-9911

NOT FOR CONSTRUCTION

No.	REVISION	DATE	BY
2.	REVISED PER CITY COMMENTS	AUG 22/24	KEW
1.	ISSUED FOR SITE PLAN APPLICATION	MAY 31/24	KEW

DESIGN	SCALE
KEW	
CHECKED	
RGJ	
DRAWN	
KEW	
CHECKED	
TB	
APPROVED	
RGJ	

FOR REVIEW ONLY



NOVATECH
Engineers, Planners & Landscape Architects
Suite 200, 240 Michael Cowpland Drive
Ottawa, Ontario, Canada K2M 1P6
Telephone (613) 254-9643
Facsimile (613) 254-5867
Website www.novatech-eng.com

LOCATION
CITY OF OTTAWA
100 BILL LEATHAM DRIVE

DRAWING NAME
DETAILS

PROJECT No. 124011
REV # 2
DRAWING No. 124011-L1