

# 265 CENTRUM

CITY COMMENTS RESPONSE

January 12, 2024

**B+H**

## Accessibility

- 4.8. The pre-consultation comments noted the need for an AODA compliant pedestrian connection from Centrum to the entries of Towers B and C. Neither the pre-consult concept, nor the concept of September 2022 suggested that this would not be possible (both images below).

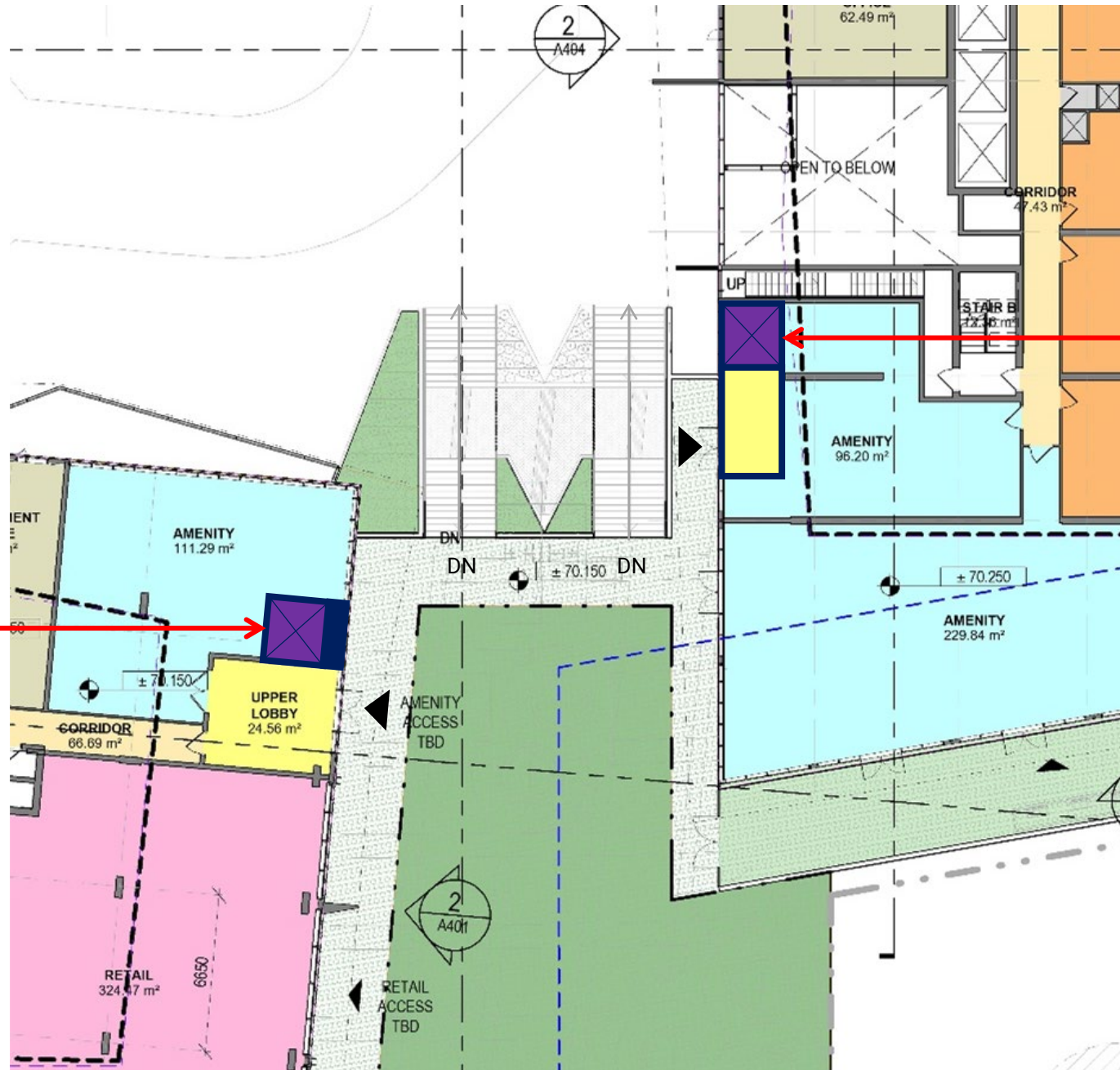
The current submission shows a significant staircase, which is in no way accessible. People living in Tower C, who may use wheelchairs, canes, walkers, strollers etc. will be required to go all the way around Brisebois to get to any uses on Centrum, including bus service.

The plan needs to be reworked to include an AODA compliant connection, as clearly noted in the original pre-consult comments provided in Spring 2022.

# ACCESSIBILITY

## UPPER GRADE

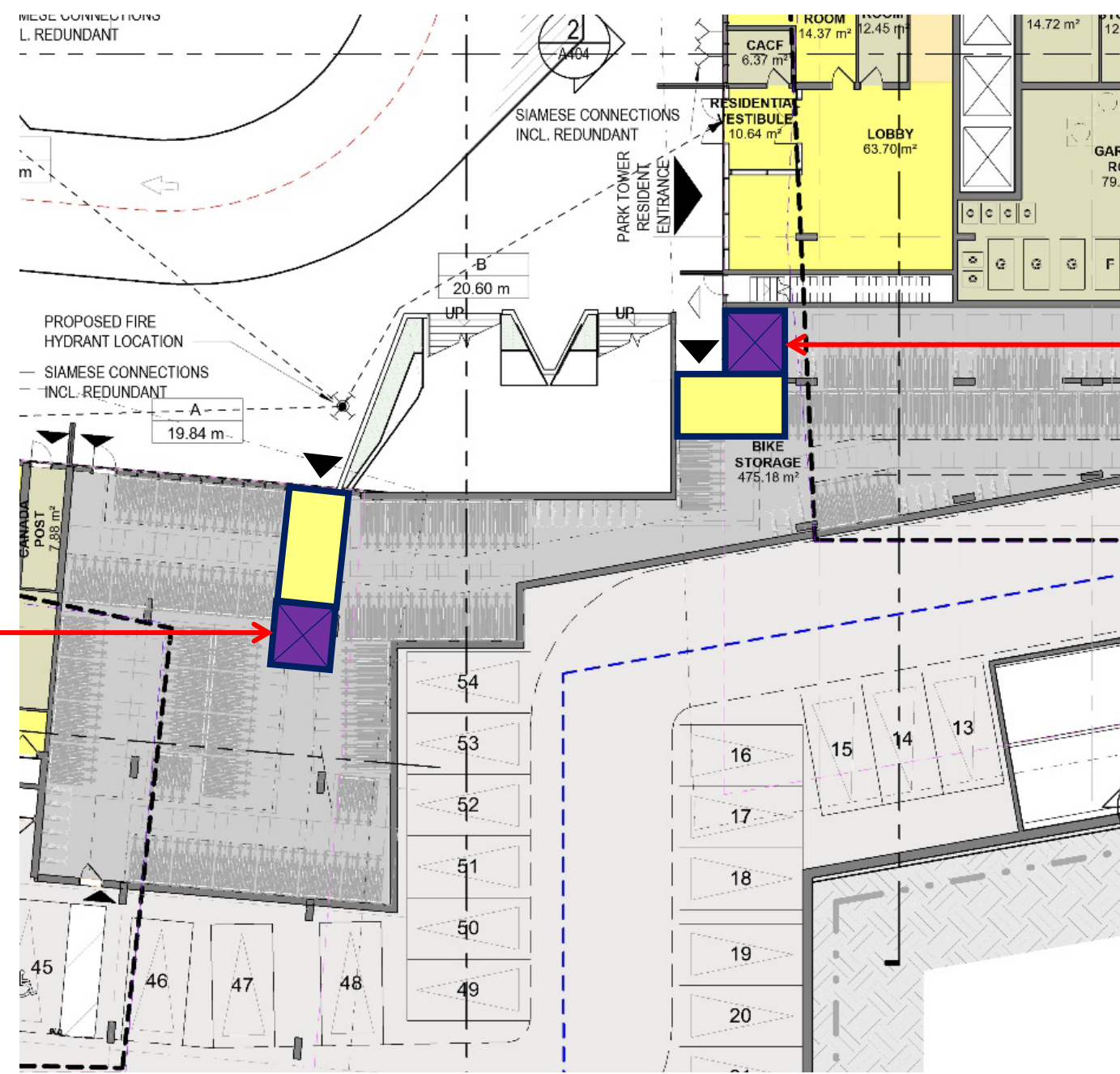
1



2

# ACCESSIBILITY

## LOWER GRADE



1

MORE IMPACT ON  
BIKE PARKING

2

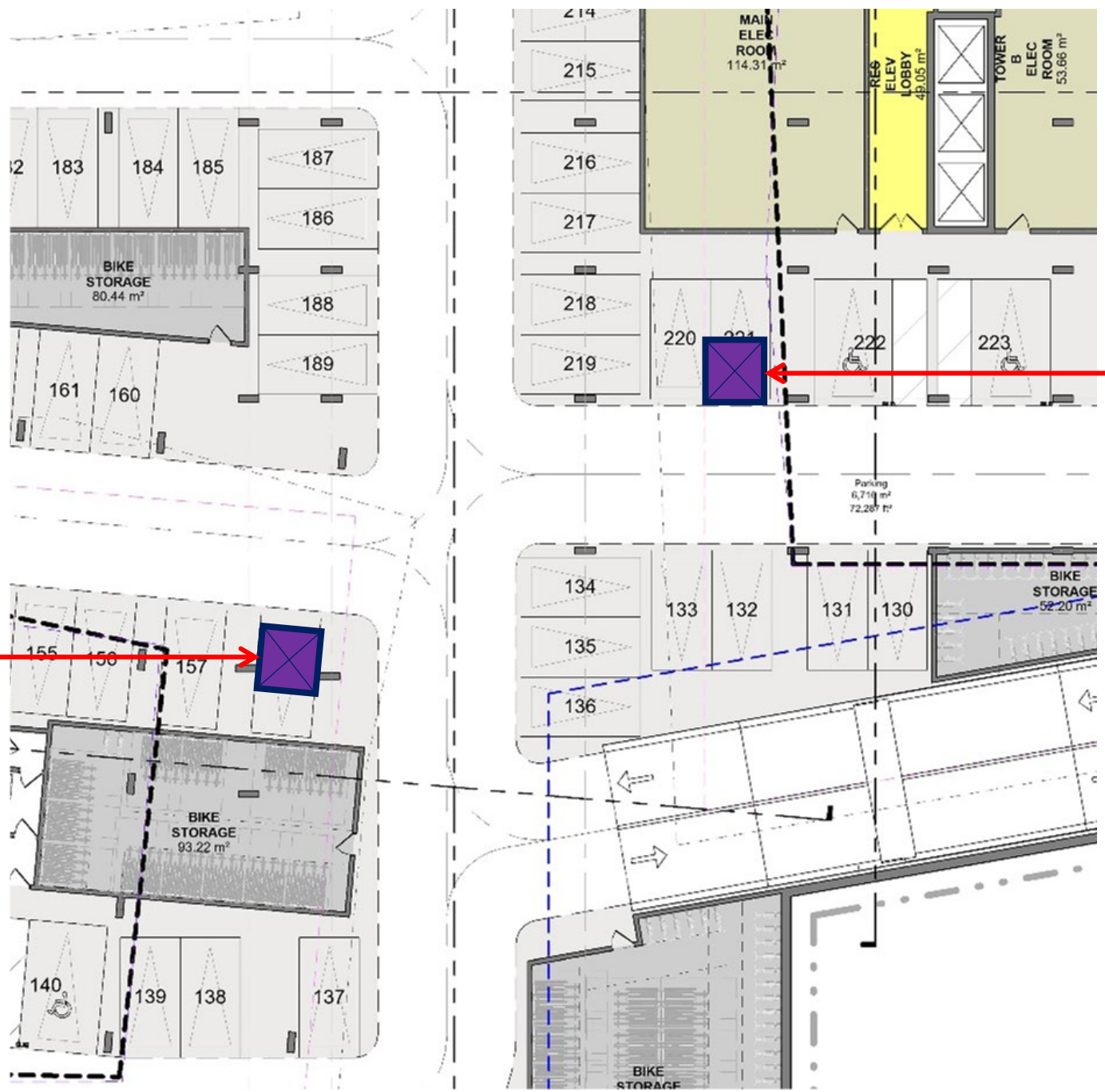
LESS IMPACT ON  
BIKE PARKING

# ACCESSIBILITY

P1

**1**  
PIT – LOSE 1  
PARKING SPOT

**2**  
PIT – LOSE 1  
PARKING SPOT





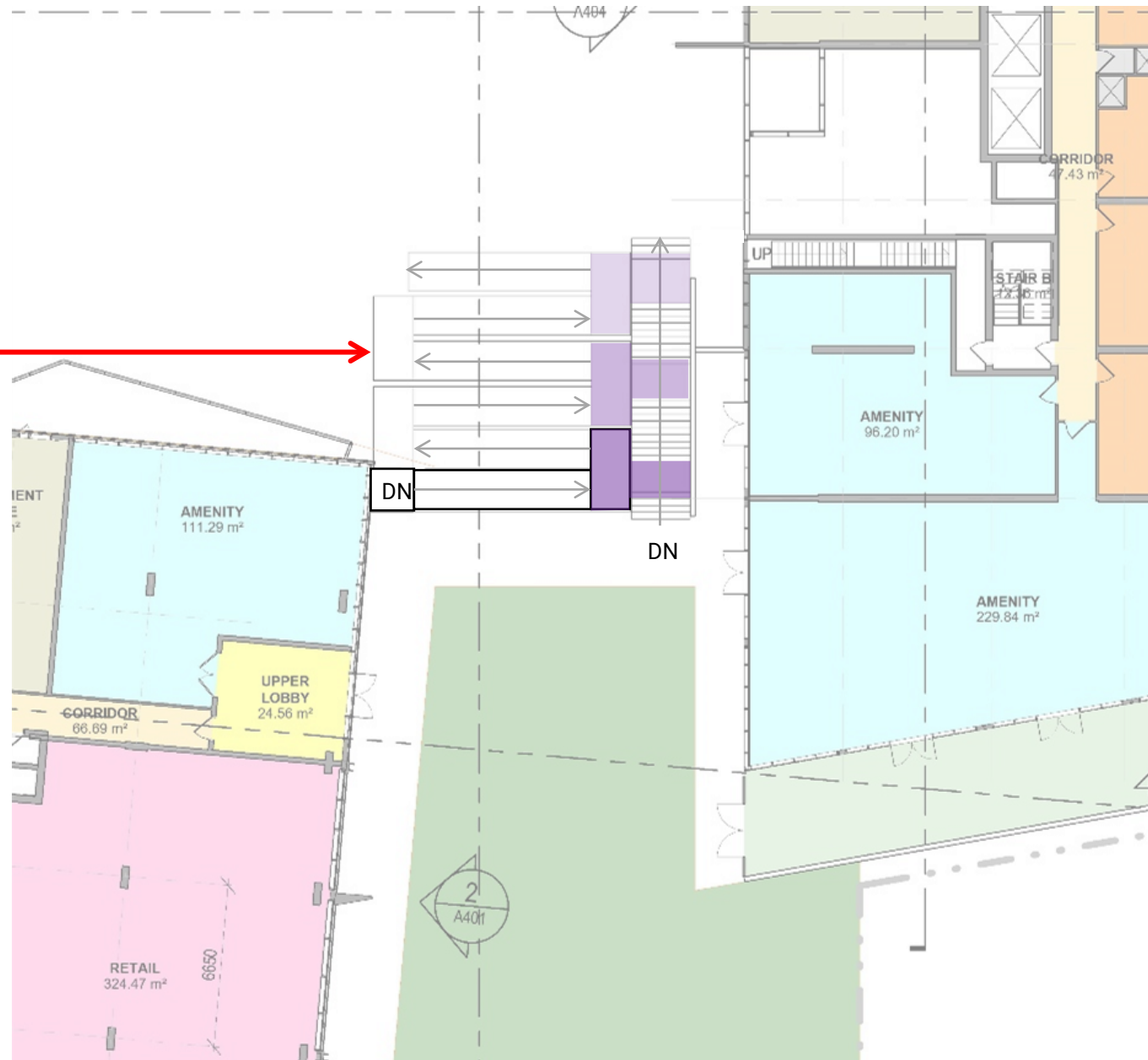
# ACCESSIBILITY

## UPPER GRADE

3

RAMP AT 10%  
(MAX EXTERIOR  
RAMP SLOPE)

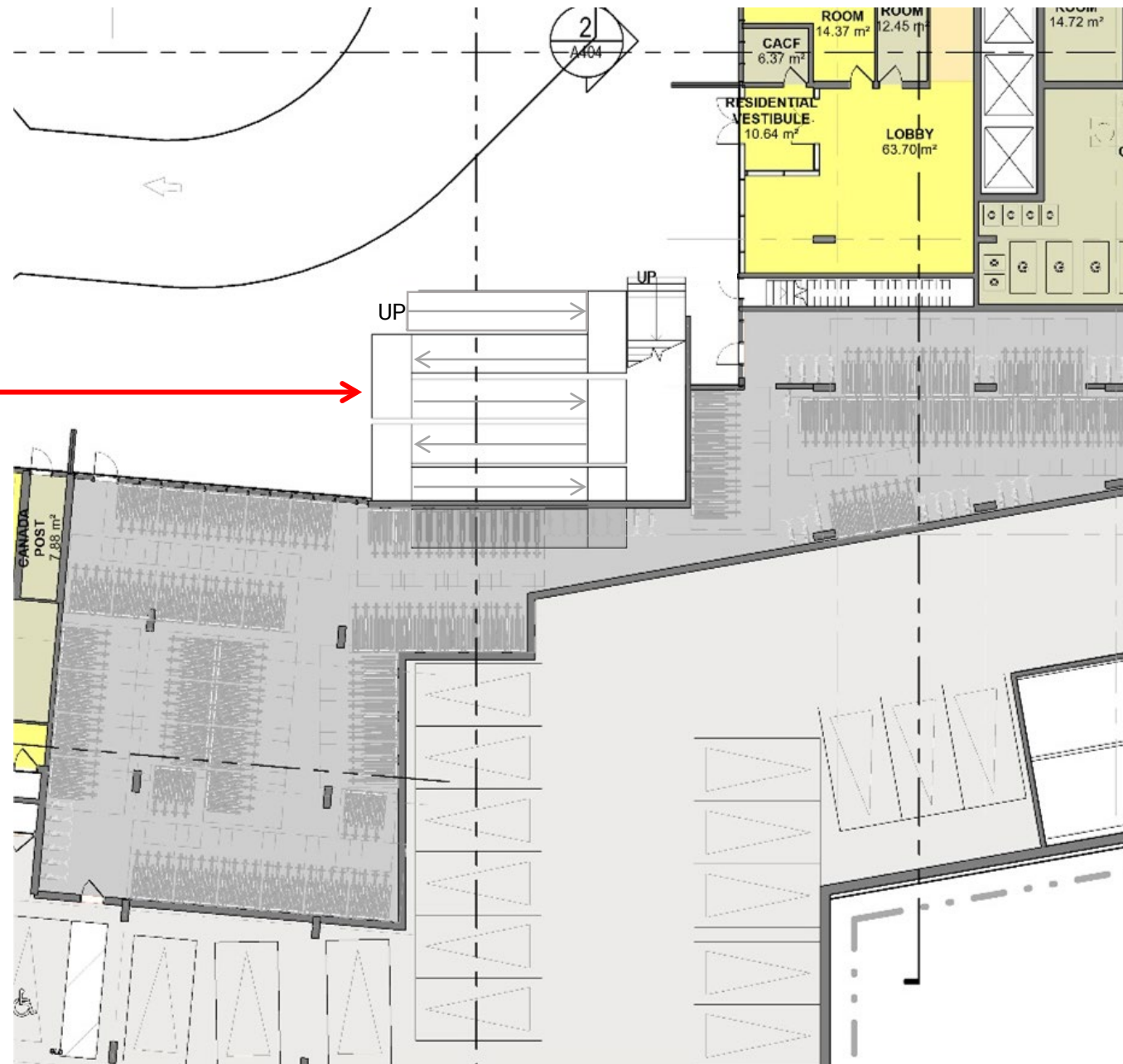
TO BE STUDIED  
TO OPTIMIZE  
ALIGNMENT WITH  
STAIR LANDINGS



# ACCESSIBILITY

## LOWER GRADE

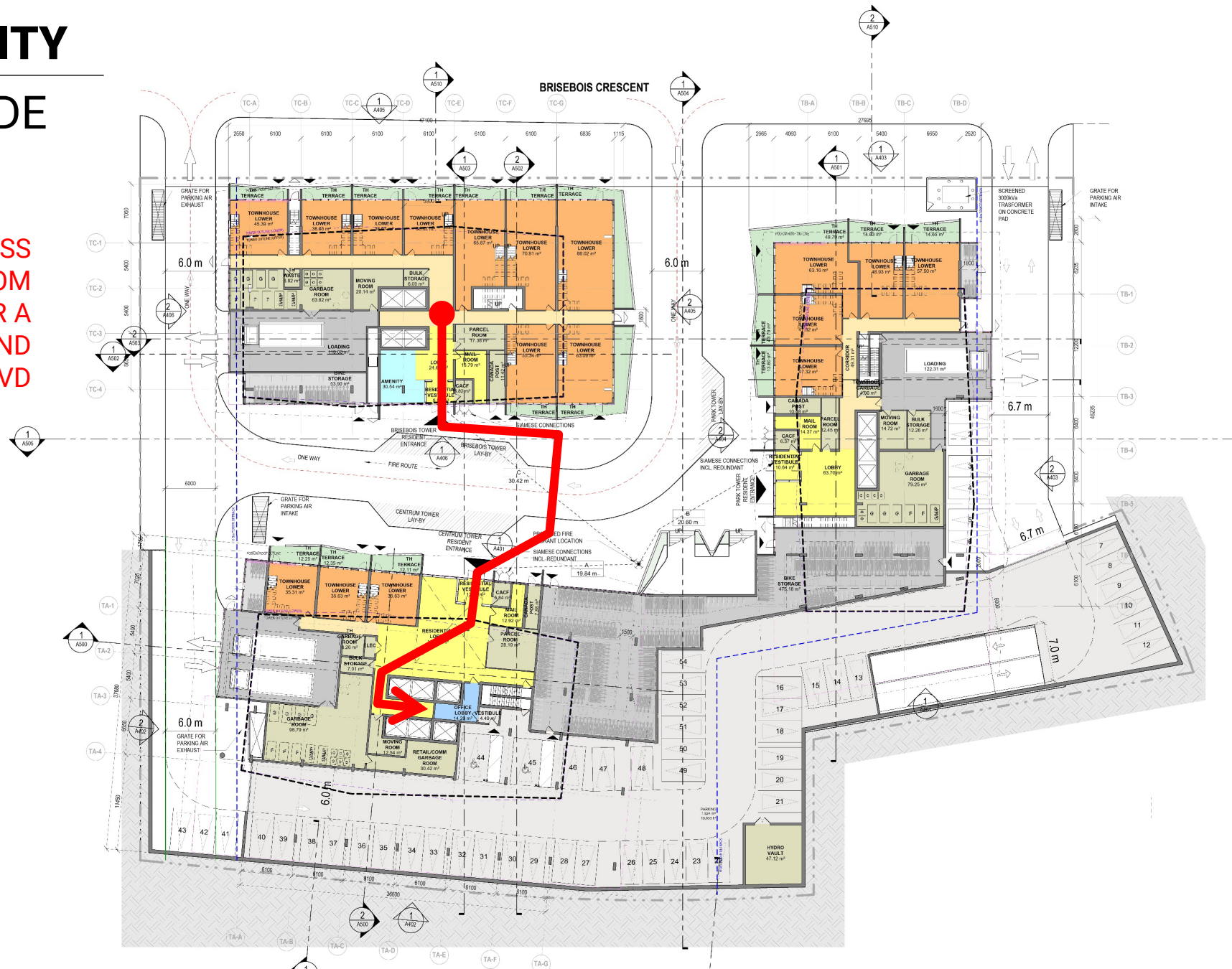
3



# ACCESSIBILITY

## LOWER GRADE

ACCESSIBLE ACCESS  
ROUTE FROM  
TOWER C - TOWER A  
AMENITIES AND  
CENTRUM BLVD





# ACCESSIBILITY

## UPPER GRADE

ACCESSIBLE ACCESS ROUTE FROM TOWER C - TOWER A AMENITIES AND CENTRUM BLVD



# 265 CENTRUM

CITY COMMENTS RESPONSE

January 12, 2024

**B+H**