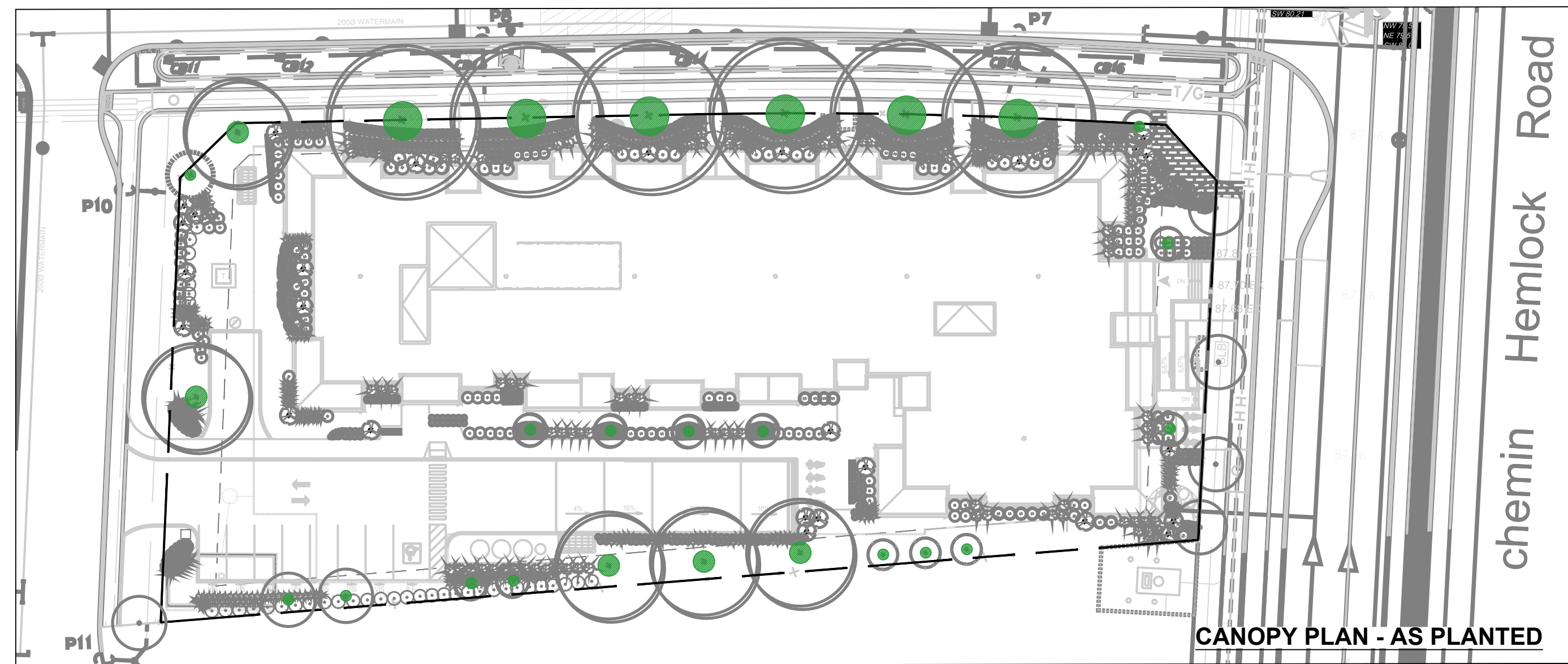
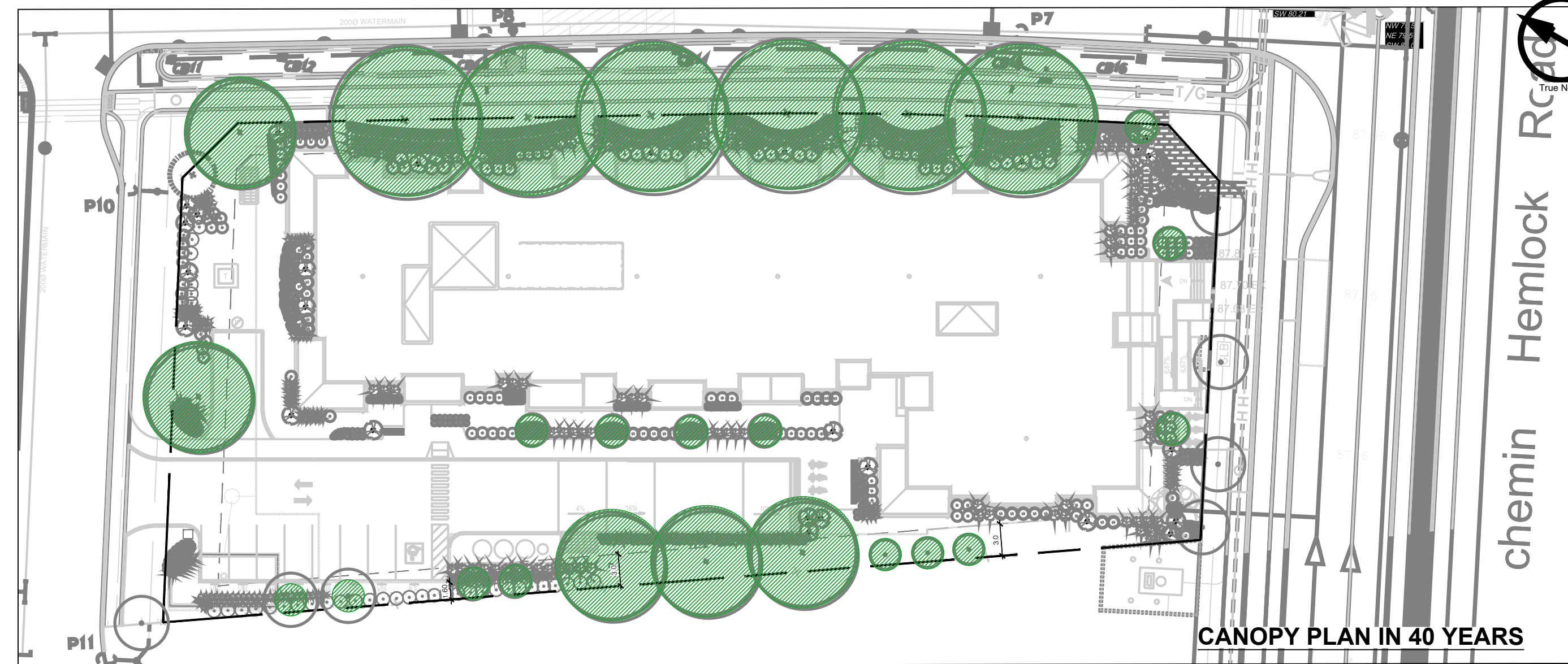


SOIL VOLUME PLAN FOR TREES



CANOPY PLAN - AS PLANTED



CANOPY PLAN IN 40 YEARS

CANOPY COVER CHART

KEY	BOTANICAL NAME	COMMON NAME	QTY.	CROWN AREA PER TREE WHEN PLANTED (m²)	CANOPY AREA SUBTOTAL WHEN PLANTED (m²)	CROWN AREA PER TREE WHEN MATURE (m²)	CANOPY AREA SUBTOTAL WHEN MATURE (m²)	PERCENTAGE OF TOTAL CANOPY (%)	PERCENTAGE OF TOTAL GENUS (%)
LARGE STATURE TREES									
AfJ	<i>Acer x freemanii</i> 'Jeffersred'	Autumn Blaze Maple	3	4	12	154	462	31.7%	22.6%
Qr	<i>Quercus rubra</i>	Northern Red Oak	3	4	12	154	462	31.7%	9.7%
MEDIUM STATURE TREES									
PaB	<i>Platanus x acerifolia</i> 'Bloodgood'	Bloodgood Plane Tree	5	3	12.5	78.5	392.5	26.9%	16.1%
SMALL STATURE TREES									
AJ	<i>Amelanchier laevis</i>	Allegheny serviceberry	7	1	7	7	49	3.4%	22.6%
AxA	<i>Acer x freemanii</i> 'Armstrong'	Armstrong Maple	4	1	4	7	28	1.9%	
LIF	<i>Liriodendron tulipifera</i> 'Fastigiate'	Columnar Tulip Tree	3	1	3	7	21	1.4%	9.7%
PpG	<i>Picea pungens</i> var. <i>glauca</i>	Colorado Blue Spruce	4	1	4	7	28	1.9%	12.9%
2 transplanted trees within site	<i>Syringa</i> species	Lilac Species	2	1	2	7	14	1.0%	6.5%
TOTAL			31		56.5		1456.5	100.0%	100.0%
TOTAL SITE AREA (m2)						4175			
TOTAL TREE CANOPY PERCENTAGE WHEN PLANTED (%)						1.4%			
TOTAL MATURE TREE CANOPY PERCENTAGE (%)						34.9%			

*MATURE TREE CANOPY AREAS ARE DERIVED FROM OAKVILLE CANOPY COVER GUIDELINES

CLIENT
ROHIT COMMUNITIES

550 91 STREET SW #101, EDMONTON, AB T6X0V1

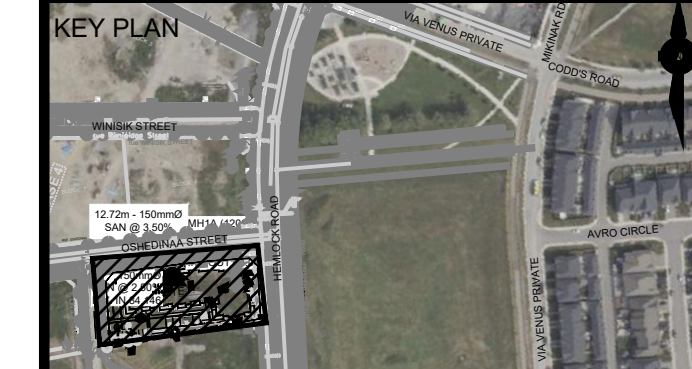
BLOCK-5 PIN NUMBER - 04273-1231

COPYRIGHT
This drawing has been prepared solely for the intended use, thus any reproduction or distribution for any purpose other than authorized by Arcadis is forbidden. Written dimensions shall have precedence over scaled dimensions. Contractors shall verify and be responsible for all dimensions and conditions on the job, and Arcadis shall be informed of any variations from the dimensions and conditions shown on the drawing. Shop drawings shall be submitted to Arcadis for general conformance before proceeding with fabrication.

Arcadis Professional Services (Canada) Inc.
is a part of Arcadis

ISSUES		
No.	DESCRIPTION	DATE
1	ISSUED FOR SPA SUBMISSION	2023-12-18
2	ISSUED FOR SPA SUBMISSION	2024-02-21
3	ISSUED FOR SPA SUBMISSION	2024-04-30

CONSULTANTS
TITLE: ARCADIS PROFESSIONAL SERVICES (CANADA) INC.
LANDSCAPE: ARCADIS PROFESSIONAL SERVICES (CANADA)
SURVEY: ANNIS, O SULLIVAN, VOLLEBEKK LTD.
ARCHITECTURE: NDRR ARCHITECTS & ENGINEERING LTD.
STRUCTURAL: CUNLIFE & ASSOCIATES
MECHANICAL: GOODKEY, WEEDMARK & ASSOCIATES LTD.
ELECTRICAL: GOODKEY, WEEDMARK & ASSOCIATES LTD.
OWNER: ROHIT AT WATERIDGE S LTD.



PRIME CONSULTANT

410 Albert Street - Suite 101
Waterloo ON N2L 3V3 Canada
tel 519 585 2255
www.arcadis.com

PROJECT
ROHIT WATERIDGE VILLAGE BLOCK 5

OTTAWA, ON

PROJECT NO:
143934

DRAWN BY:
R.S

CHECKED BY:
M.P.

PROJECT MGR:
M.P.

APPROVED BY:
T.M.

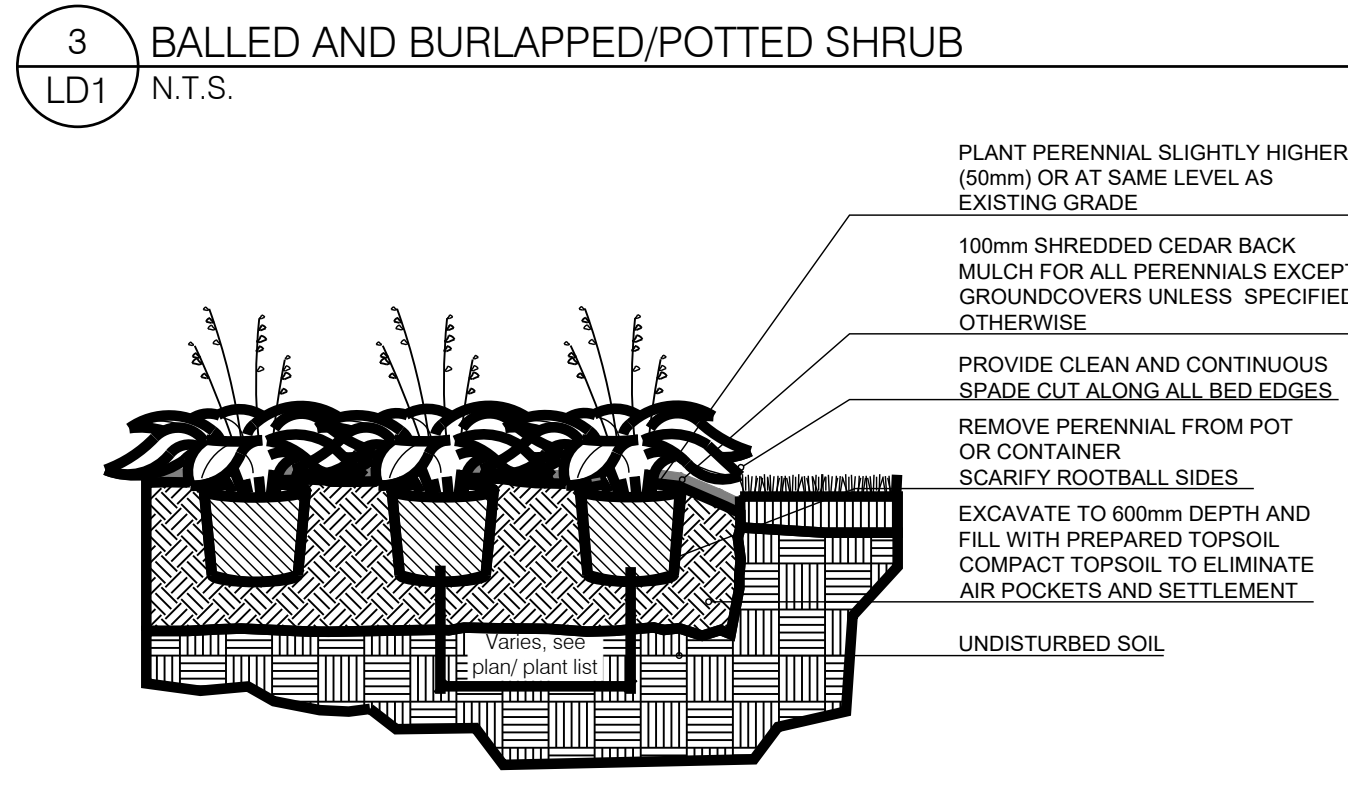
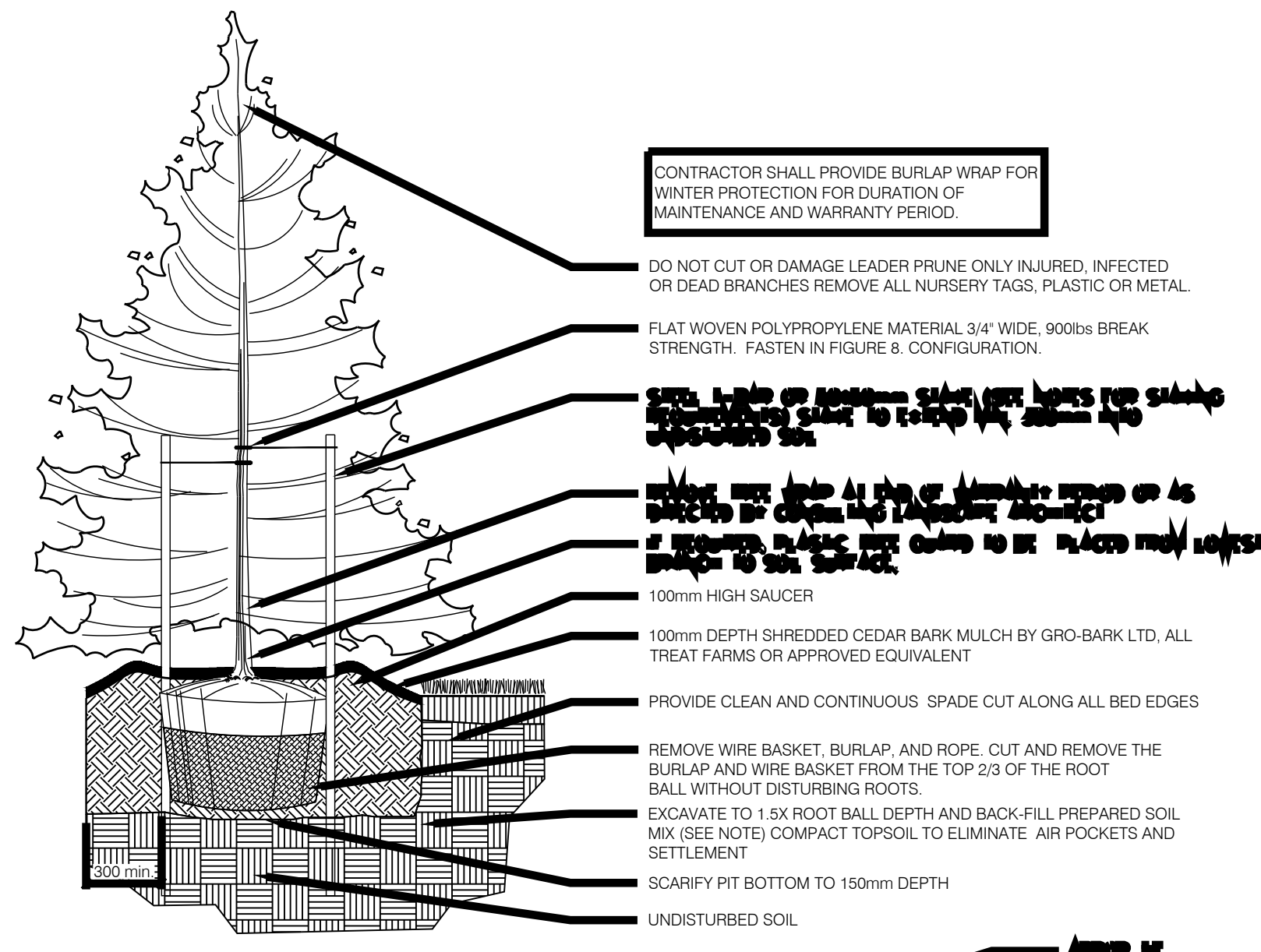
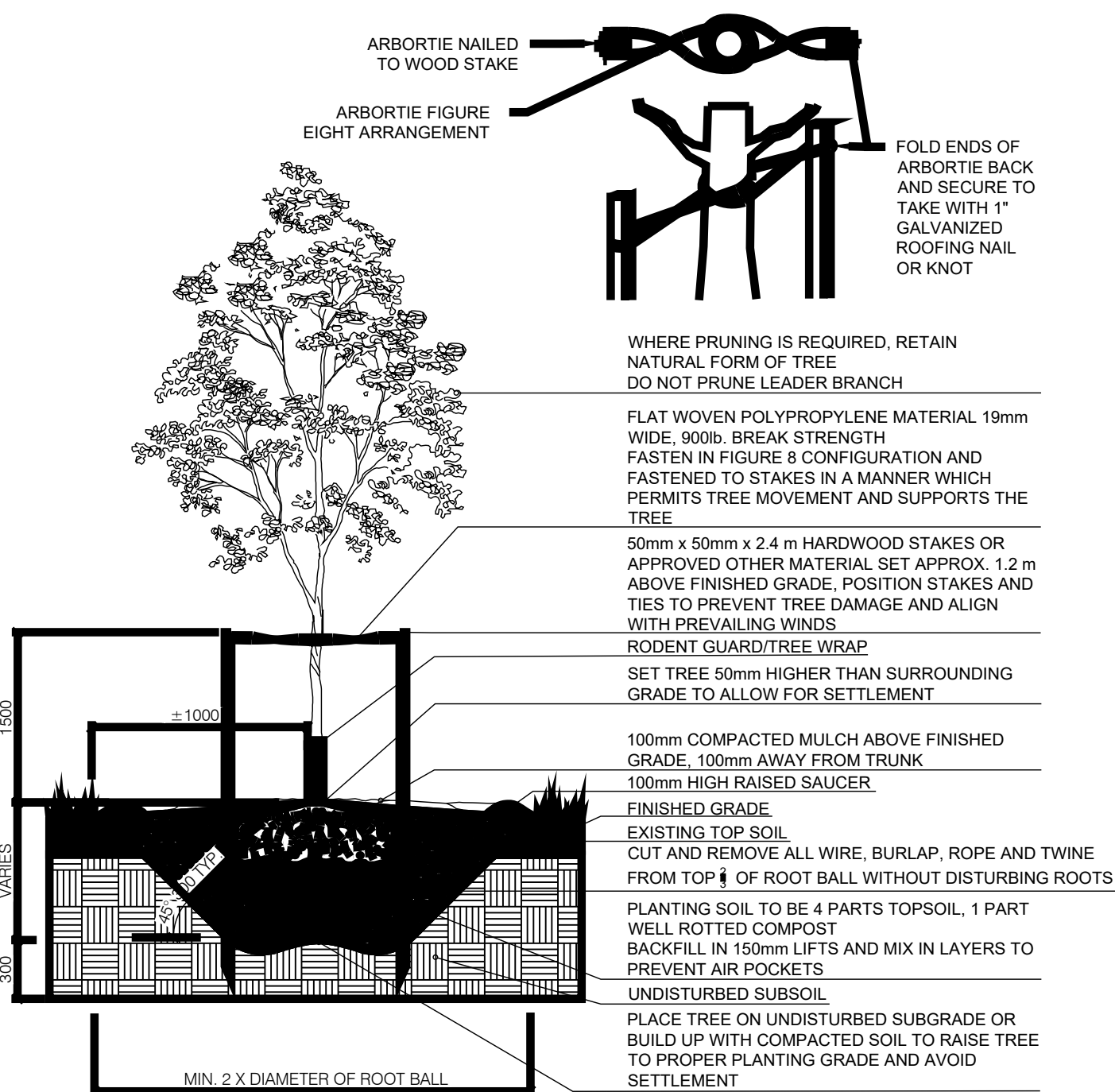
SHEET TITLE
SOIL AND CANOPY PLAN

SHEET NUMBER
LP2

ISSUE
1

File Location: C:\1143934_Block_5_P1_417_0_Production\03_Design\landscape\143934_LP.dwg Last Saved: June 28, 2024, by shenoy0684 Plotted: June 28, 2024, 1:45:12 PM by Shenoy, Ruchika

TREE STAKING SCHEDULE:
 < 2500mm HT. - ONE STAKE
 > 2500mm HT. - TWO STAKES
 ONLY STAKE TREES WHEN NECESSARY DUE TO WIND LOAD



GENERAL NOTES

- Any ambiguity in the drawings, specifications or details are to be reported to the Landscape Architect for direction. These drawings shall not be used for construction unless stamped and signed by the Landscape Architect. The Contractor is not to proceed in uncertainty. The limits of work are to be clearly understood by the Contractor prior to any work taking place on the site.
- All dimensions are in meters unless otherwise noted. The drawings may be scaled for approximate layout. The Contractor is to verify all dimensions on the drawing(s) and report any discrepancies to the Landscape Architect.
- The Contractor is to locate and mark all infrastructure and utilities prior to any excavation work or planting on the site. Do not plant directly above underground utilities or infrastructure unless approved by the Landscape Architect. Dig all holes by hand when closer than 1.0m to any underground power, telephone or gas utility. The Contractor is responsible for the coordination and maintenance of all utility/infrastructure located for the duration of the Contract.
- The Contractor shall supply all materials in quantities sufficient to complete work shown on these drawings. The Contractor is not to substitute materials, products or quantities without prior written consent of the Landscape Architect.
- The Contractor is to take all necessary precautions to protect all existing site features unless specified for removal/demolition. This includes all survey bars, stakes, monuments and sediment barriers. The Contractor is responsible for any damages incurred during construction and must make all necessary restorations and repairs to original or better condition.
- All existing trees, shrubs, and herbaceous plants beyond the limit of work are to be protected from construction damage. This includes but is not limited to: not storing construction materials or fuel within the drip-line of an existing tree, not altering existing grades or compacting soil around protected vegetation and taking care not to disturb or expose the roots of any existing trees. The Contractor is responsible for all protection or hoarding measures of all existing trees and vegetation to be preserved within or adjacent to construction work limits.
- Contractor is responsible for the removal of all debris, garbage and surplus materials on site related to their contract or work and must keep the site in a clean, safe, useable condition at all times or as directed by the Contract Administrator.

PLANTING NOTES

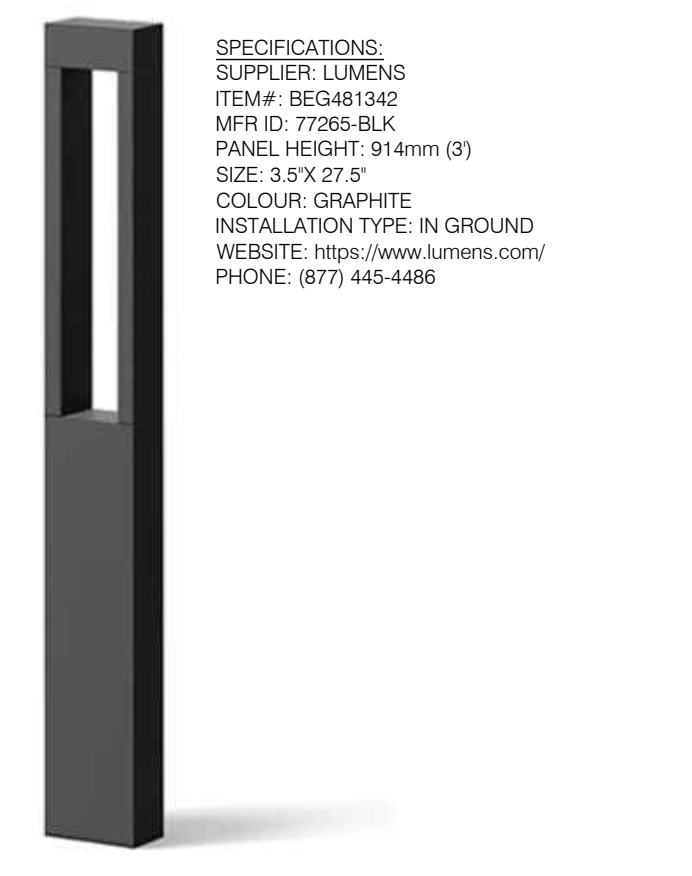
- The Contractor must notify the Landscape Architect prior to the commencement of any planting. The Contractor shall supply all plants and materials in quantities sufficient to complete the work shown on this drawing. Any discrepancies between quantities shall be reported to the Landscape Architect.
- All landscape works will be warrantied for a period of two years following inspection and written notice of start of warranty period as determined and provided by the Landscape Architect. Plant material, which is not in a healthy, vigorous growing condition at the end of the warranty period, shall be replaced to the satisfaction of the Landscape Architect / Owner.
- The Landscape Architect reserves the right to extend Contractor's warranty responsibilities for an additional year if, at the end of initial warranty period, leaf development and growth is not sufficient to ensure future survival as determined by the Landscape Architect.
- The Contractor is to identify with Landscape Architect/Owner any maintenance requirements necessary for warranty purposes.
- Plant materials specified for this project will conform to the Canadian Nursery Landscape Association (CNLA) for size, variety and condition as indicated on the plant schedule shown on these drawings. Any plant materials which do not conform will be promptly removed from the site and replaced by the Contractor at no additional cost to the project.
- The Landscape Architect is to be contacted for inspection and written approval prior to plant material arriving on site. The Landscape Architect reserved the right to reject any plant materials that have not been inspected and approved.
- The Landscape Architect reserves the right to refuse acceptance of any plant displaying poor growth habits, injury or disease. Any plant material that is rejected by the Landscape Architect will be promptly removed from the site and replaced with material of acceptable quality at no additional charge to the project.
- Plant materials collected from wild sources will not be accepted without written approval of the Landscape Architect. The Landscape Architect reserves the right to require that supplier invoices be submitted for inspection and approval prior to acceptance.
- On-site layout of the plant materials to be approved by the Landscape Architect prior to installation. Minor field adjustments to plant material locations may be necessary to respond to the locations of existing plants and site conditions. The Contractor to review with Landscape Architect where relocations are necessary. The Contractor must receive approval from Landscape Architect prior to installation.
- Plants are not to be installed during extreme heat, drought, or other undesirable conditions. Thoroughly water all plants immediately after installation. The Contractor shall regularly monitor site conditions and water as required to ensure healthy growth conditions throughout the duration of the warranty period.
- Do not plant directly in centerline of drainage swales or depression areas. Where proposed planting locations conflict with constructed swales or low-lying wet areas, contact Landscape Architect for direction.
- Supply and place topsoil in accordance with OPSS 802 to a minimum depth of 150mm in seed/sod areas and 600mm in planting beds unless otherwise specified. Each source of topsoil, imported or native to be approved by Landscape Architect prior to use. Submit topsoil analysis/test results to Landscape Architect prior to order or delivery to site. Testing to be in accordance with Contract specifications. Prepared topsoil shall be 4 parts topsoil to one part well-rotted compost.
- Mulch: to be spread uniformly around the base of trees and shrubs to a minimum depth of 100 mm. Do not place mulch in direct contact with trunk or stem(s). Allow a 100 mm mulch free zone at trunk/stems. Shrubs to be in continuously mulched planting beds unless otherwise specified.
- Supply and place seed in accordance with OPSS 804 unless otherwise specified. All 5:1 or greater slopes to be seeded with tackifier. All slopes greater than 3:1 shall be matted with an erosion control blanket. Supply and place sod in accordance with OPSS 803 unless otherwise specified.
- The Contractor is to remove dead or damaged branches on trees or shrubs. All pruning shall be performed in accordance with standard horticultural practices and appropriate timing for each species.
- All stakes and associated ties are to be removed after the first full growing season. Rodent guards are to be removed at the conclusion of the warranty period. If utilized, Gato-guards are to be removed for winter months.

Ridgewood Bench With Arms
PS-692-22-AL-72-WD3-WD3-A-BD

Our 'Ridgewood' bench with Armrests features an all-welded aluminum, powdercoated frame with 'lpe' tropical wood, envirowood, or aluminum slats. Available in a variety of sizes and finishes.

HAUSER SITE FURNITURE

Width: 72" (182.9 cm)
 Depth: 24.43" (62.1 cm)
 Height: 30.18" (76.6 cm)
 Weight: 120.0 lb (54.5 kg)

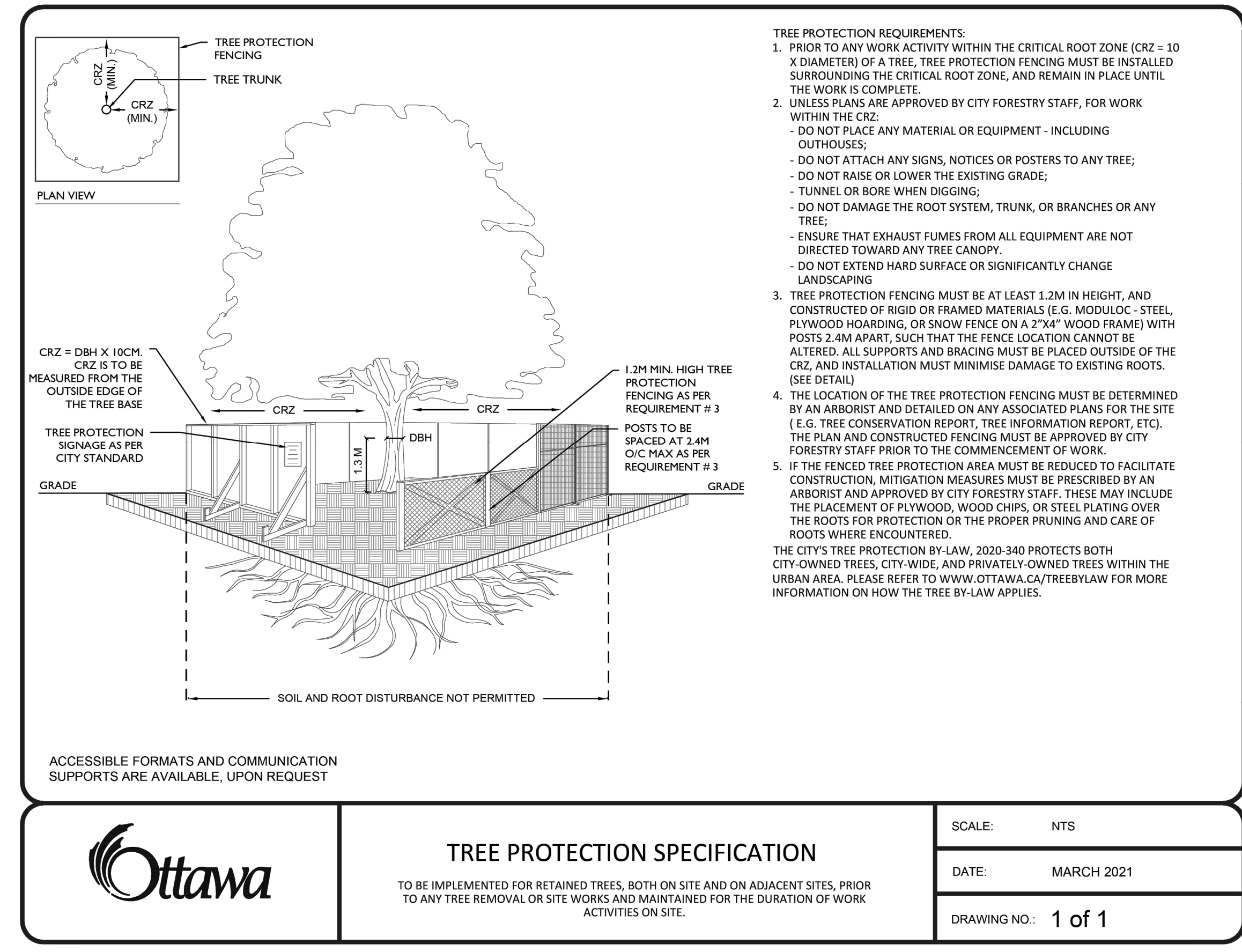
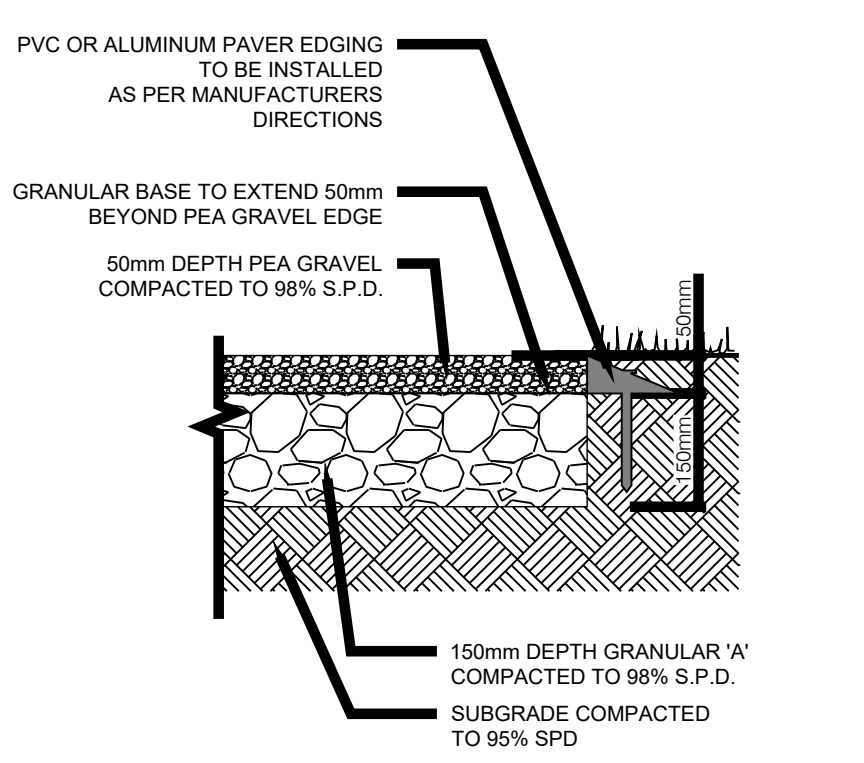


Skyline Bike Rack With Tropical Wood Accent
PS-78-102-21-AW Skyline Bike Rack

Our Skyline Bike Rack features an all-welded, powdercoated aluminum construction. Show here with our 'Pewter' powdercoat finish, and an 'lpe' tropical wood accent. Custom sizes available upon request.

HAUSER SITE FURNITURE

Width: 30" (76.2 cm)
 Depth: 2" (5.1 cm)
 Height: 32" (81.3 cm)



HAUSER - SKYLINE BIKE RACK WITH TROPICAL WOOD ACCENT
LD1 N.T.S.

PEA GRAVEL
LD1 N.T.S.

TREE PROTECTION FENCE
LD1 N.T.S.

CLIENT
ROHIT COMMUNITIES

550 91 STREET SW #101, EDMONTON, AB T6X0V1

BLOCK-5 PIN NUMBER - 04273-1231

COPYRIGHT
This drawing has been prepared solely for the intended use, thus any reproduction or distribution for any purpose other than authorized by Arcadis is forbidden. Written dimensions shall have precedence over scaled dimensions. Contractors shall verify and be responsible for all dimensions and conditions on the job, and Arcadis shall be informed of any variations from the dimensions and conditions shown on the drawing. Shop drawings shall be submitted to Arcadis for general conformance before proceeding with fabrication.

Arcadis Professional Services (Canada) Inc.
is a part of Arcadis

ISSUES

No.	DESCRIPTION	DATE
1	ISSUED FOR SPA SUBMISSION	2023-12-18
2	ISSUED FOR SPA SUBMISSION	2024-02-21
3	ISSUED FOR SPA SUBMISSION	2024-04-30

CONSULTANTS
 TITLE: ARCADIS PROFESSIONAL SERVICES (CANADA) INC.
 LANDSCAPE: ARCADIS PROFESSIONAL SERVICES (CANADA)
 SURVEY: ANNIS, O SULLIVAN, VOLLEBEK LTD.
 ARCHITECTURE: NDR ARCHITECTS & ENGINEERING LTD.
 STRUCTURAL: CUNIFFE & ASSOCIATES
 MECHANICAL: GOODKEY, WEEDMARK & ASSOCIATES LTD.
 ELECTRICAL: GOODKEY, WEEDMARK & ASSOCIATES LTD.
 OWNER: ROHIT AT WATERIDGE 5 LTD.

SEAL

KEY PLAN

PRIME CONSULTANT
ARCADIS
 410 Albert Street - Suite 101
 Waterloo ON N2L 3V3 Canada
 tel 519 585 2255
 www.arcadis.com

PROJECT
ROHIT WATERIDGE VILLAGE
BLOCK 5
 OTTAWA, ON

PROJECT NO:
143934

DRAWN BY:
R.S

CHECKED BY:
M.P.

PROJECT MGR:
M.P.

APPROVED BY:
T.M.

SHEET TITLE
LANDSCAPE DETAILS

SHEET NUMBER
LD1

ISSUE
1

FILE LOCATION: Q:\143934_Block_5_Pin_477_0_Production\03_Design\landscape\143934_LP.dwg
 Plotted: June 28, 2024 1:45:19 PM by Shenoy/G64