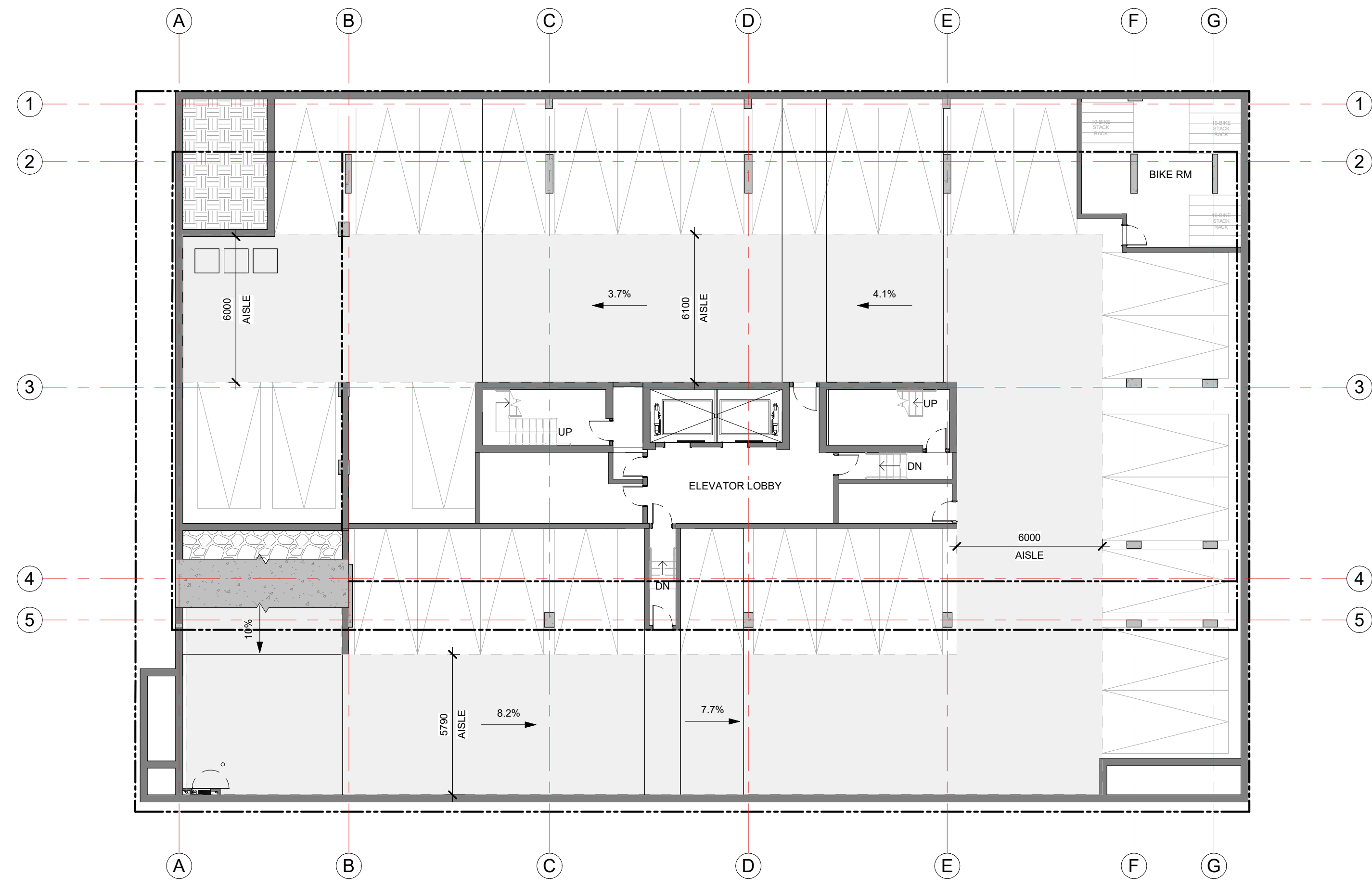


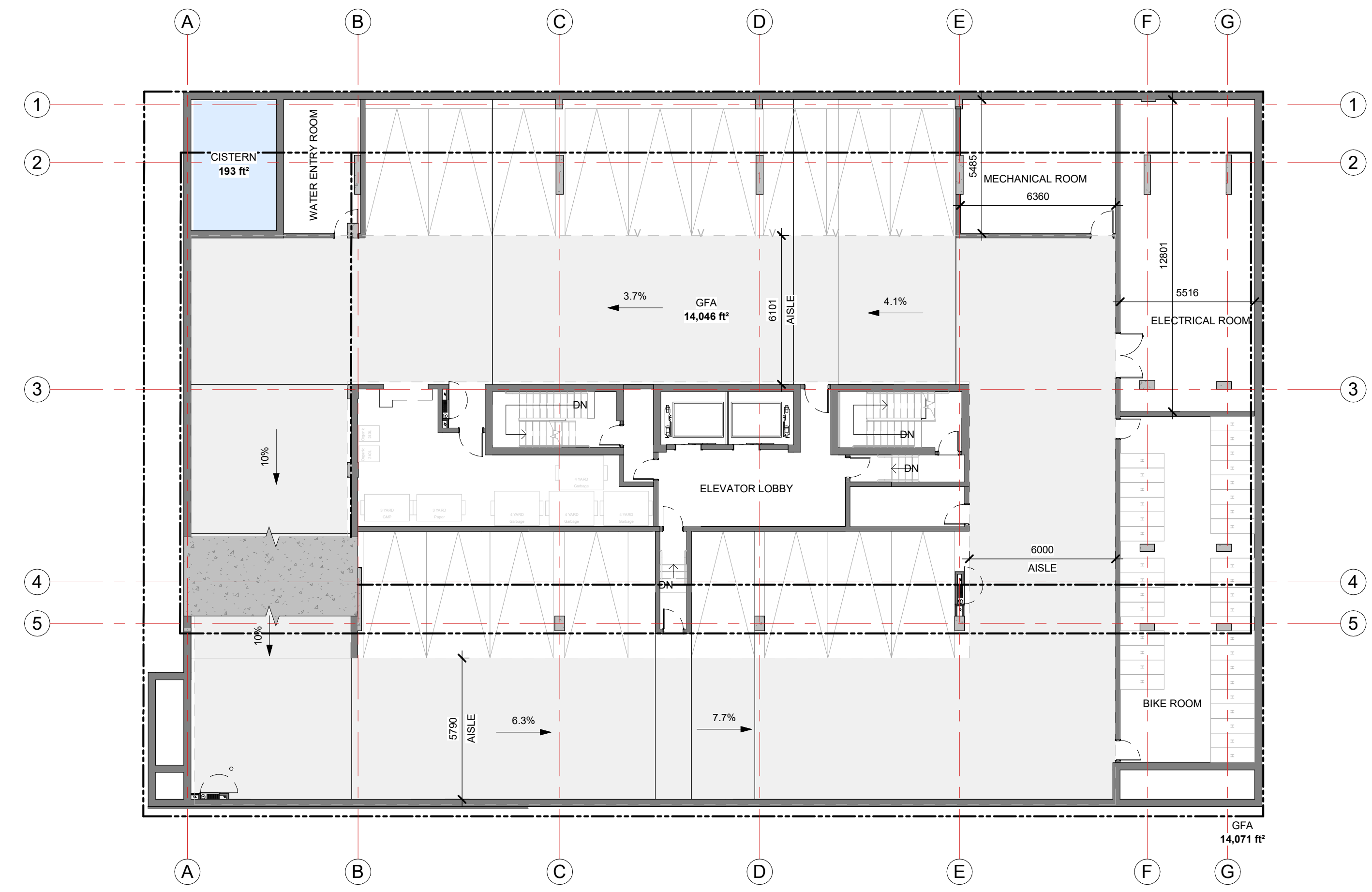
CAR PARKING		
PARKING SIZE	VIS.	QTY
2600 x 5200mm	No	42
2600 x 5200mm	Yes	5
<b>GRAND TOTAL</b>		<b>47</b>

BIKE PARKING		
RACK TYPE		QTY
10-BIKE STACK RACK		30
INTERIOR HORIZONTAL		35
EXTERIOR LOOP		2
<b>GRAND TOTAL</b>		<b>67</b>

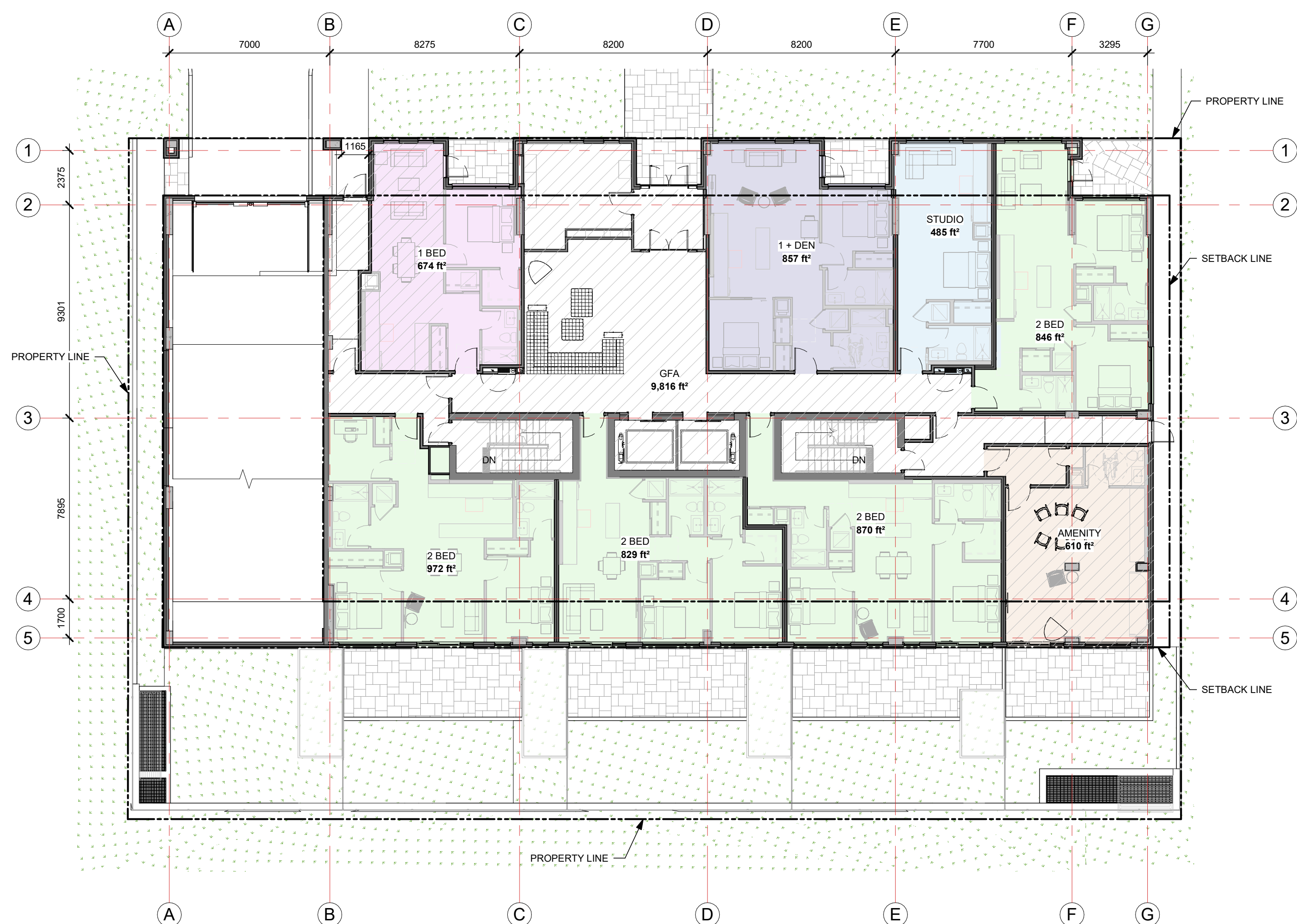
IT IS THE RESPONSIBILITY OF THE APPROPRIATE CONTRACTOR TO CHECK AND VERIFY ALL DIMENSIONS ON SITE AND TO REPORT ALL ERRORS AND/OR OMISSIONS TO THE ARCHITECT.  
 ALL CONTRACTORS MUST COMPLY WITH ALL PERTINENT CODES AND BY-LAWS.  
 THIS DRAWING MAY NOT BE USED FOR CONSTRUCTION UNTIL SIGNED BY THE ARCHITECT.  
 DO NOT SCALE DRAWINGS.  
 COPYRIGHT RESERVED.



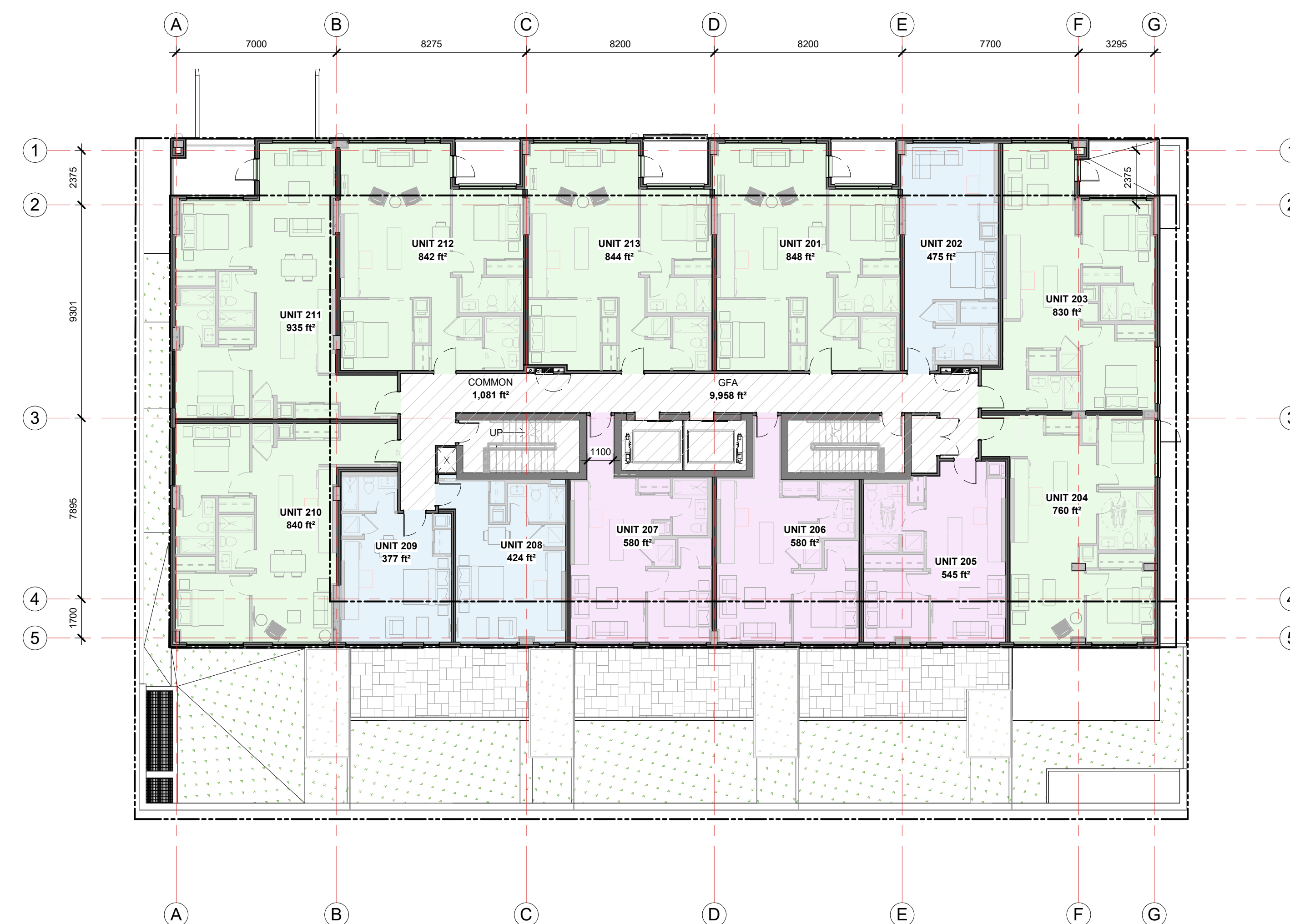
P2 PARKING PLAN



P1 PARKING PLAN



GROUND FLOOR PLAN



2ND FLOOR PLAN

NO.	DESCRIPTION	DATE
SPC 09	ISSUED FOR SPC PARKING REVISION	2024-08-16
SPC 08	ISSUED FOR SPC CITY COMMENTS	2024-07-24
SPC 07	PRE-CONSULT PHASE 3 COMMENT RESPONSE	2024-06-18
SPC 06	ISSUED FOR SPC RE-APPLICATION	2023-08-15
SPC 05	ISSUED FOR SPC RND 2 COMMENTS	2022-03-28
SPC 04	ISSUED FOR SPC RND 1 COMMENTS	2022-03-18
SPC 03	ISSUED FOR COORDINATION	2022-03-14
SPC 02	ISSUED FOR SPC APPLICATION	2021-12-13
SPC 01	ISSUED FOR SPC COORDINATION	2021-12-06
No.	DESCRIPTION	YYYY-MM-DD

ARCHITECT SEAL: NORTH ARROW:

CLIENT: THE WESTMOUNT  
ML Westboro Inc.

ARCHITECT: rla/architecture  
56 Beech Street, Ottawa, Ontario K1S 3J6  
t.613.724.9932 f.613.724.1209 www.rodericklahey.ca

PROJECT TITLE: THE WESTMOUNT  
398 - 406 ROOSEVELT AVE.

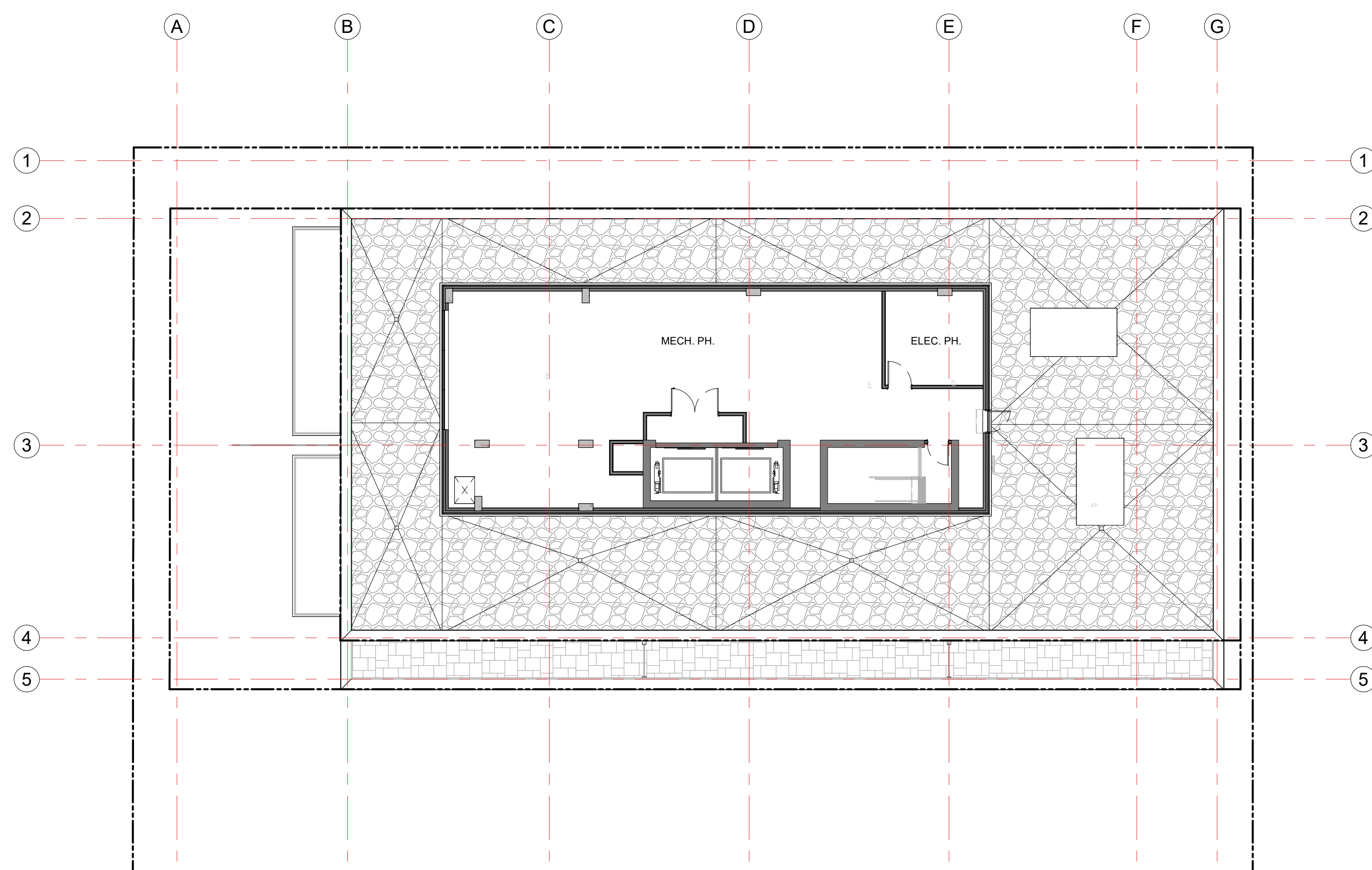
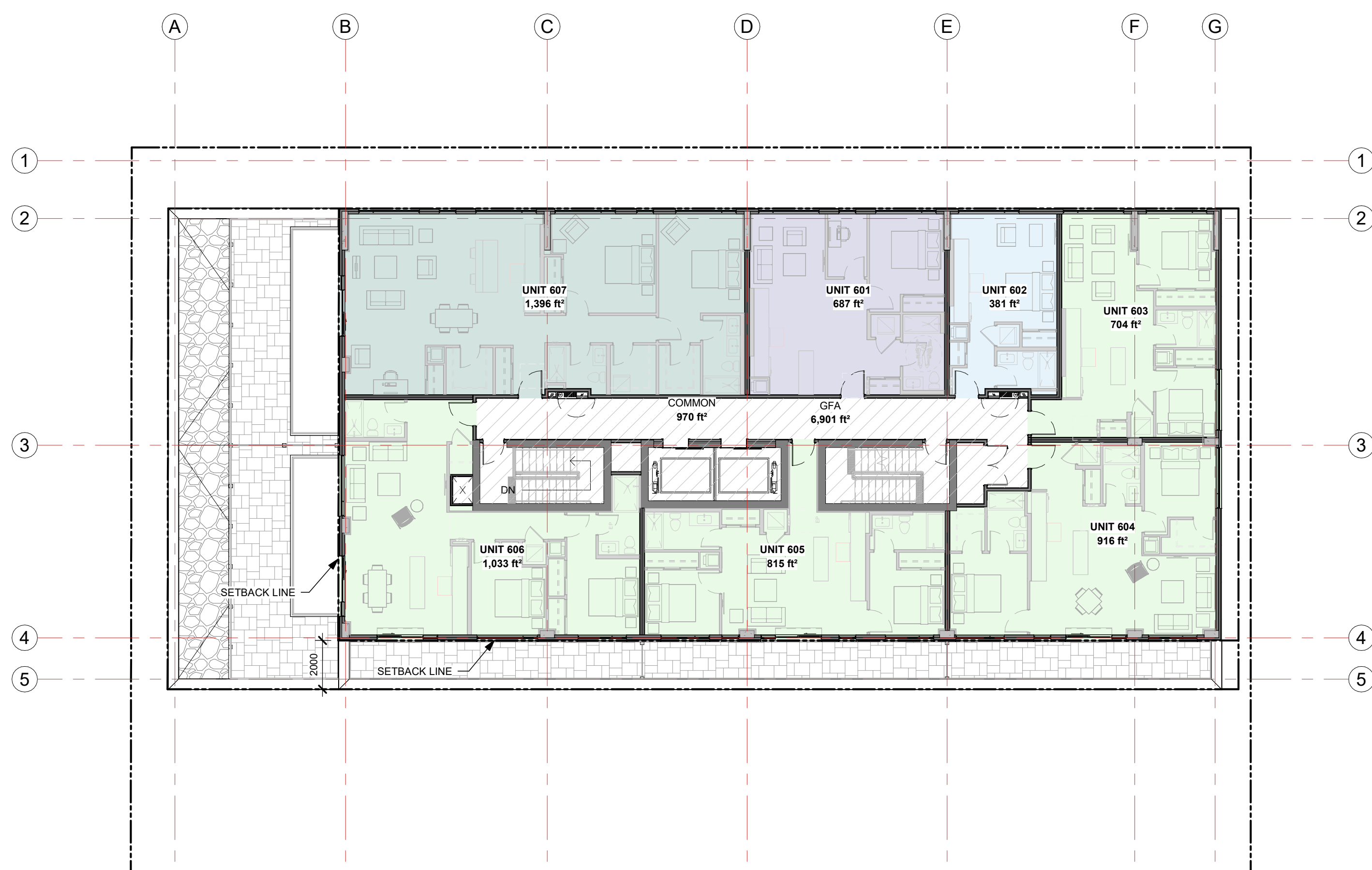
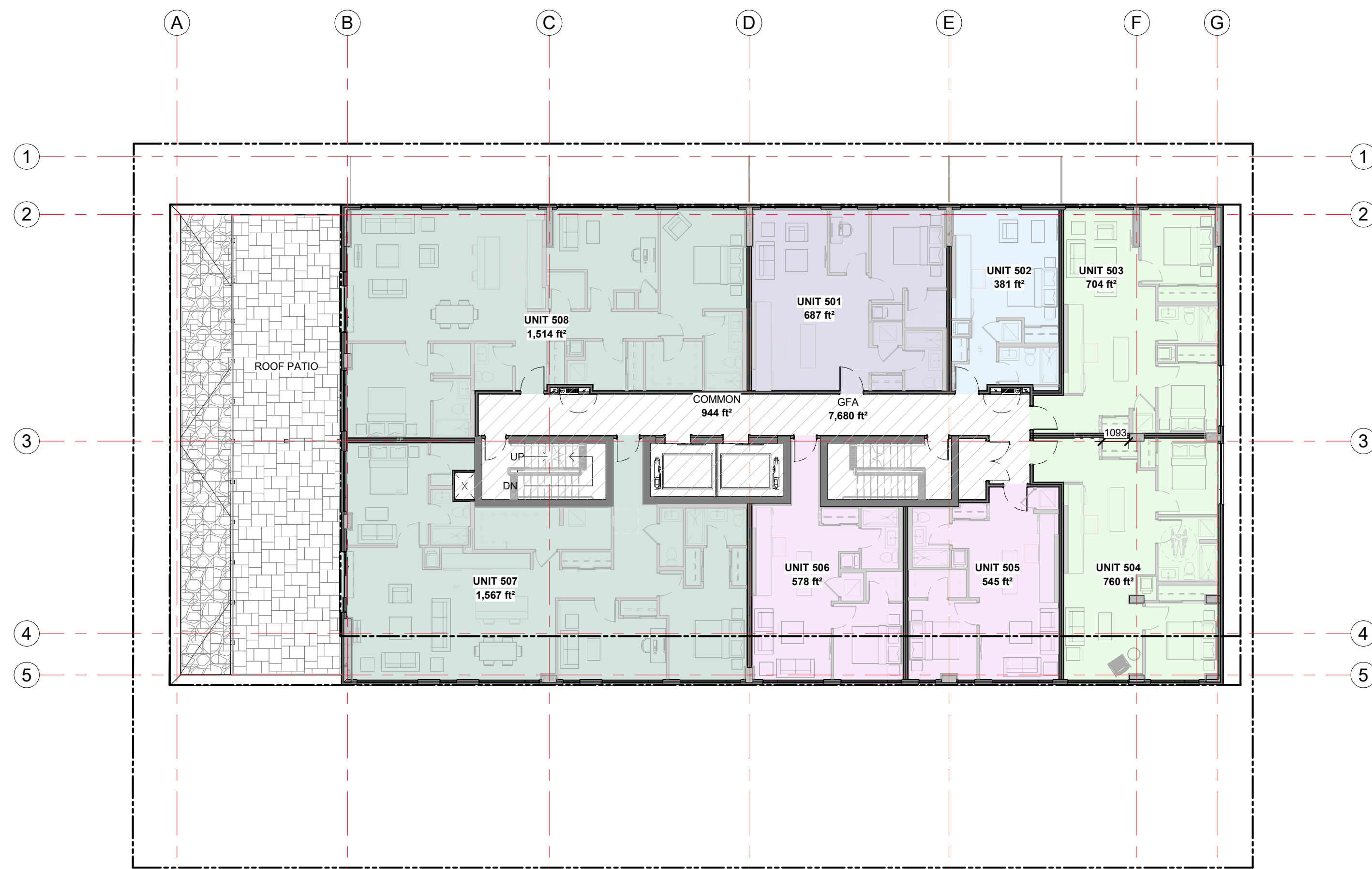
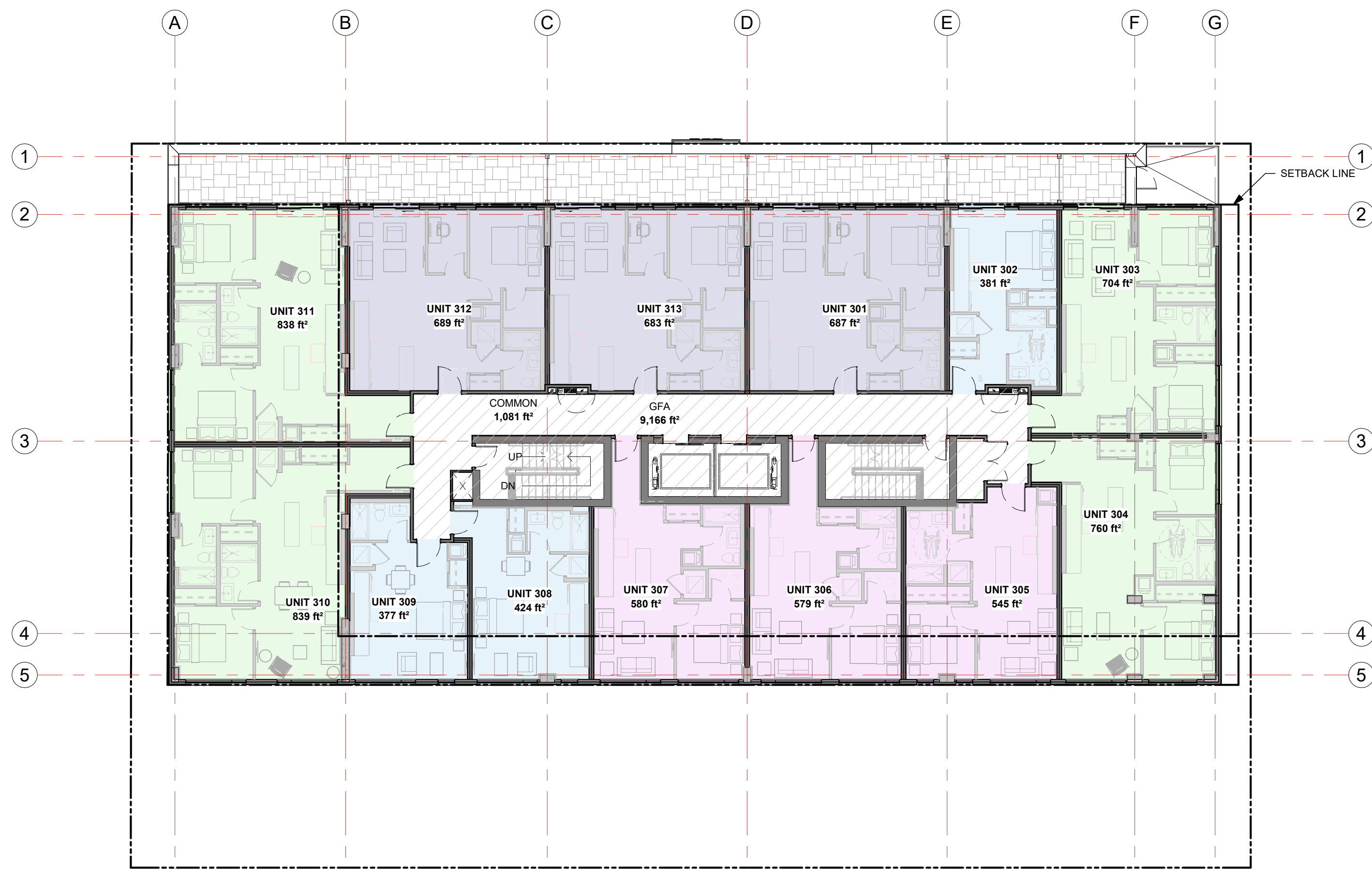
SHEET TITLE: FLOOR PLANS

DRAWN: R.I.B.	CHECKED: R.V.
SCALE: 1 : 150	SHEET No: <b>A-100</b>
PROJECT No: 2122	

PAPER SIZE: ISO Full Base B1 (707.00 x 1000.00mm) D04-24-21-2017



IT IS THE RESPONSIBILITY OF THE APPROPRIATE CONTRACTOR TO CHECK AND VERIFY ALL DIMENSIONS ON SITE AND TO REPORT ALL ERRORS AND/OR OMISSIONS TO THE ARCHITECT.  
 ALL CONTRACTORS MUST COMPLY WITH ALL PERTINENT CODES AND BY-LAWS.  
 THIS DRAWING MAY NOT BE USED FOR CONSTRUCTION UNTIL SIGNED BY THE ARCHITECT.  
 DO NOT SCALE DRAWINGS.  
 COPYRIGHT RESERVED.



No.	DESCRIPTION	DATE
SPC 09	ISSUED FOR SPC PARKING REVISION	2024-08-16
SPC 08	ISSUED FOR SPC CITY COMMENTS	2024-07-24
SPC 07	PRE-CONSULT PHASE 3 COMMENT RESPONSE	2024-06-18
SPC 06	ISSUED FOR SPC RE-APPLICATION	2023-08-15
SPC 05	ISSUED FOR SPC RND 2 COMMENTS	2022-03-28
SPC 04	ISSUED FOR SPC RND 1 COMMENTS	2022-03-18
SPC 03	ISSUED FOR COORDINATION	2022-03-14
SPC 02	ISSUED FOR SPC APPLICATION	2021-12-13
SPC 01	ISSUED FOR SPC COORDINATION	2021-12-06
No.	DESCRIPTION	YYYY-MM-DD

ARCHITECT SEAL: NORTH ARROW:

CLIENT:

ARCHITECT:   
 56 Beech Street, Ottawa, Ontario K1S 3J6  
 1.613.724.9932 1.613.724.1209 www.rodericklacey.ca

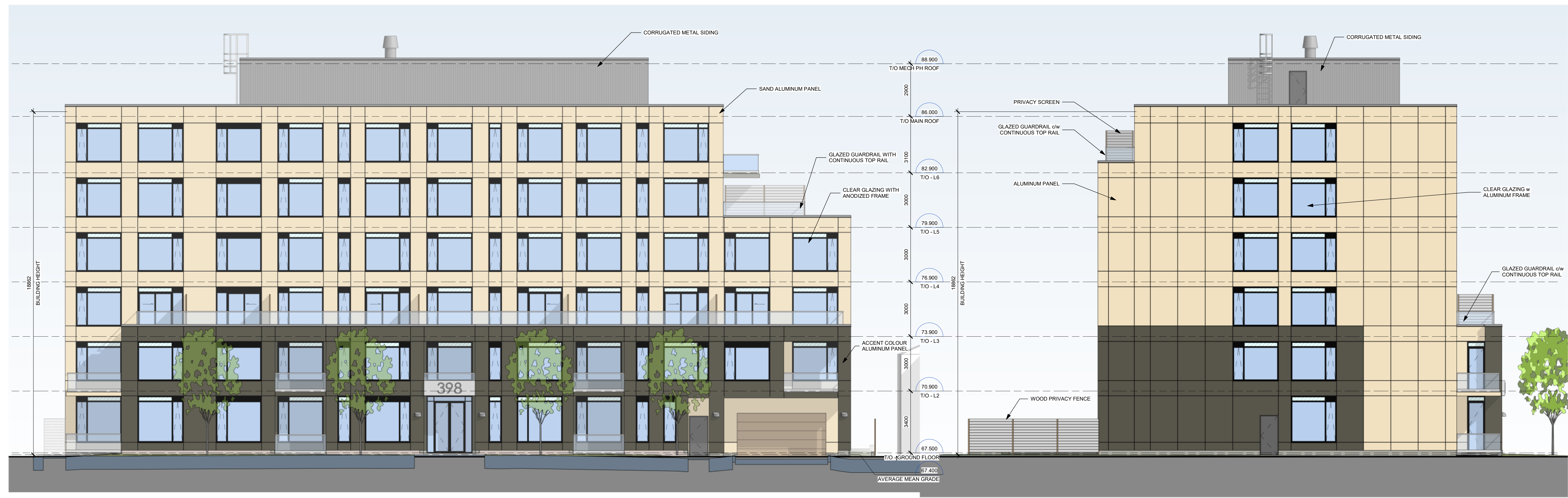
PROJECT TITLE:   
 THE WESTMOUNT  
 398 - 406 ROOSEVELT AVE.

SHEET TITLE:  
 FLOOR PLANS

DRAWN: R.I.B.	CHECKED: R.V.
SCALE: 1 : 150	SHEET No.:
PROJECT No: 2122	<b>A-101</b>

PAPER SIZE: ISO Full Base B1 (707.00 x 1000.00mm) D01-24-101





EAST ELEVATION - ROOSEVELT

SOUTH ELEVATION



WEST ELEVATION



NORTH ELEVATION

IT IS THE RESPONSIBILITY OF THE APPROPRIATE CONTRACTOR TO CHECK AND VERIFY ALL DIMENSIONS ON SITE AND TO REPORT ALL ERRORS AND/OR OMISSIONS TO THE ARCHITECT.  
 ALL CONTRACTORS MUST COMPLY WITH ALL PERTINENT CODES AND BY-LAWS.  
 THIS DRAWING MAY NOT BE USED FOR CONSTRUCTION UNTIL SIGNED BY THE ARCHITECT.  
 DO NOT SCALE DRAWINGS.  
 COPYRIGHT RESERVED.

No.	DESCRIPTION	DATE
SPC 09	ISSUED FOR SPC PARKING REVISION	2024-08-16
SPC 08	ISSUED FOR SPC CITY COMMENTS	2024-07-24
SPC 07	PRE-CONSULT PHASE 3 COMMENT RESPONSE	2024-06-18
SPC 06	ISSUED FOR SPC RE-APPLICATION	2023-08-15
SPC 05	ISSUED FOR SPC RND 2 COMMENTS	2022-03-28
SPC 04	ISSUED FOR SPC RND 1 COMMENTS	2022-03-18
SPC 03	ISSUED FOR COORDINATION	2022-03-14
SPC 02	ISSUED FOR SPC APPLICATION	2021-12-13
SPC 01	ISSUED FOR SPC COORDINATION	2021-12-06

REVISIONS:

No.	DESCRIPTION	DATE
XXXX-MM-DD		

ARCHITECT SEAL:  NORTH ARROW: 

CLIENT:



ARCHITECT:



PROJECT TITLE:



**THE WESTMOUNT**  
398 - 406 ROOSEVELT AVE.

SHEET TITLE:

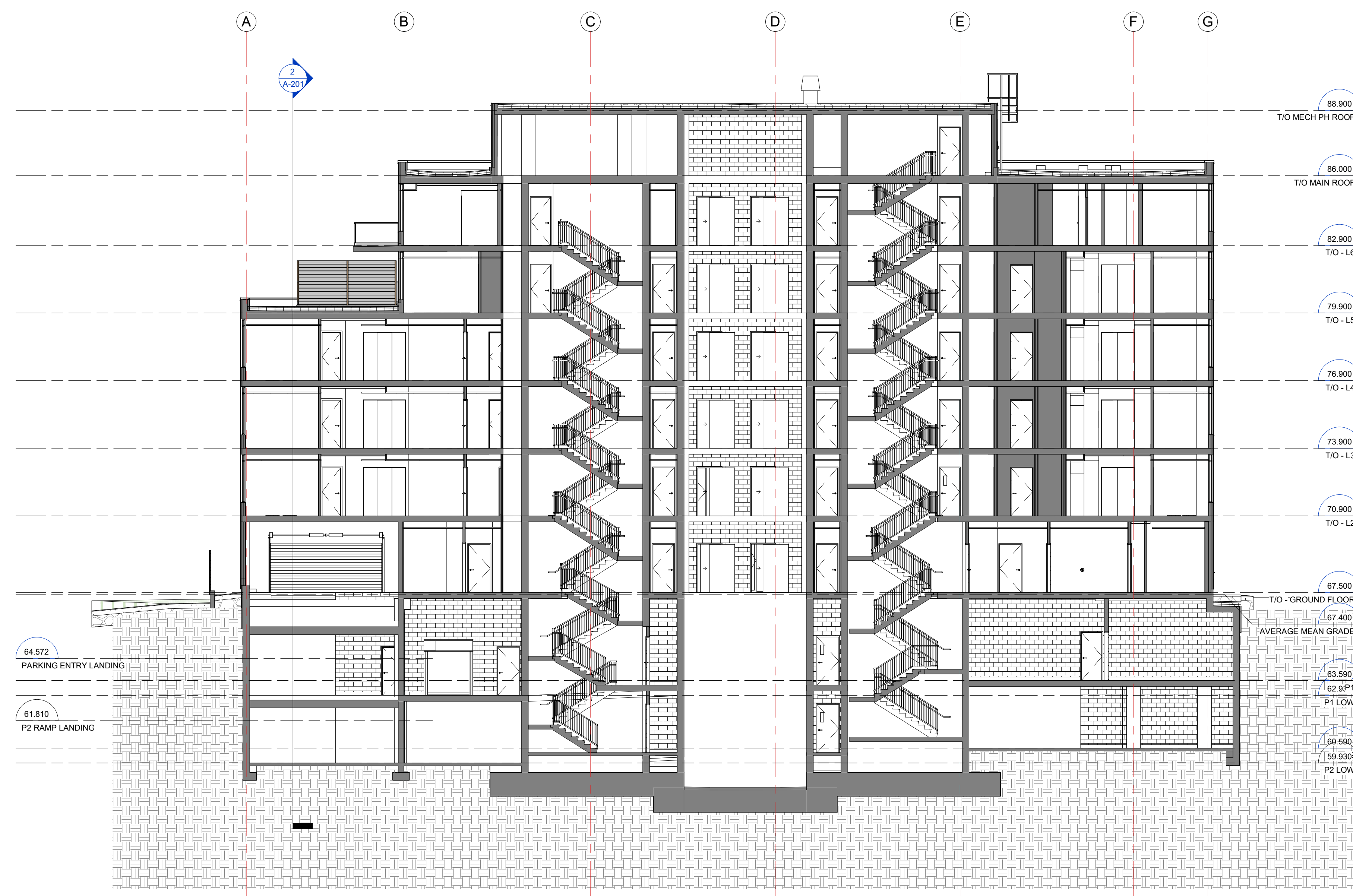
**BUILDING ELEVATIONS**

DRAWN: R.I.B.	CHECKED: R.V.
SCALE: 1 : 100	SHEET No: <b>A-200</b>
PROJECT No: 2122	

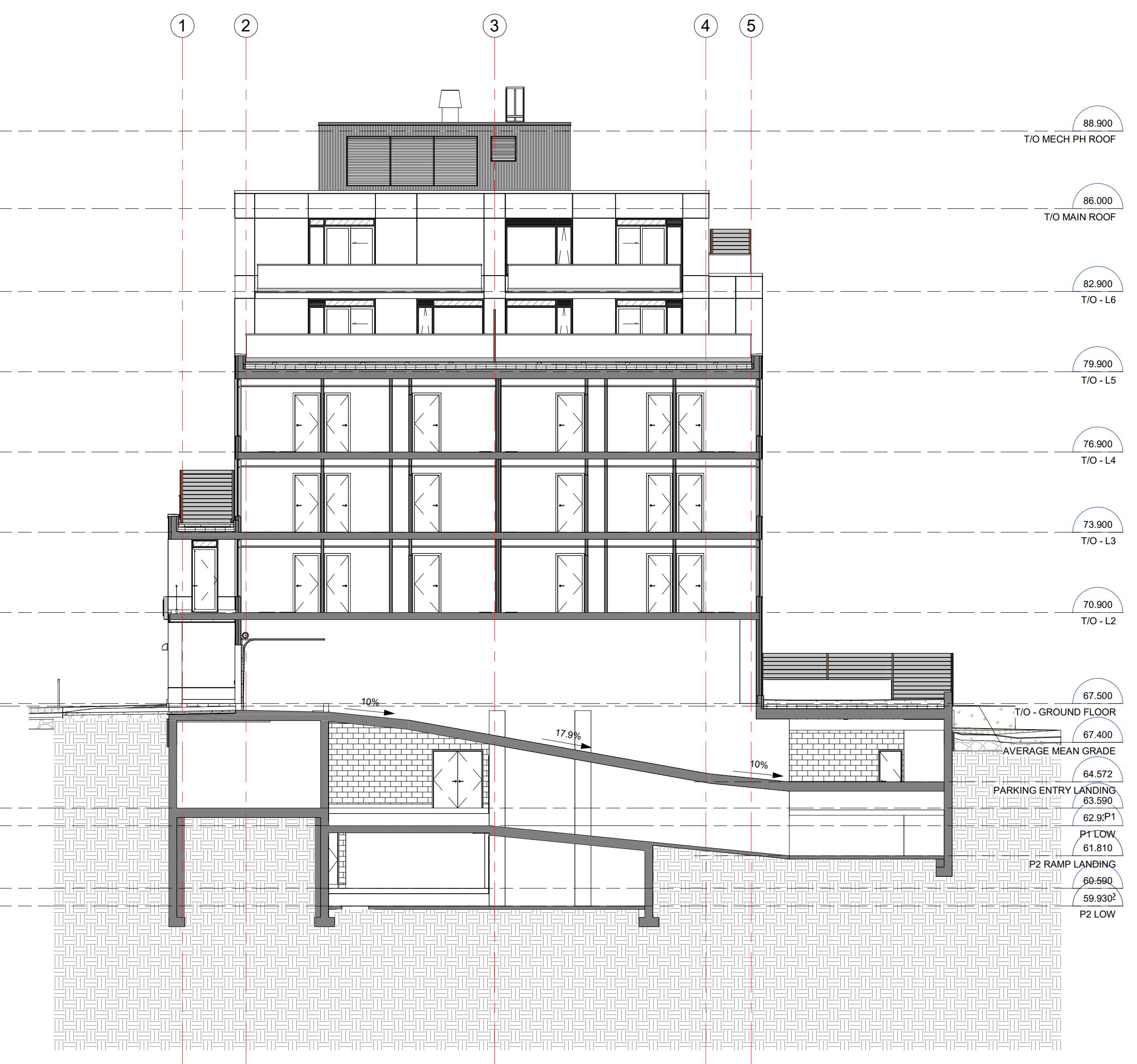
PAPER SIZE: ISO Full Base B1 (707.0x 1000.0mm)



IT IS THE RESPONSIBILITY OF THE APPROPRIATE CONTRACTOR TO CHECK AND VERIFY ALL DIMENSIONS ON SITE AND TO REPORT ALL ERRORS AND/OR OMISSIONS TO THE ARCHITECT.  
 ALL CONTRACTORS MUST COMPLY WITH ALL PERTINENT CODES AND BY-LAWS.  
 THIS DRAWING MAY NOT BE USED FOR CONSTRUCTION UNTIL SIGNED BY THE ARCHITECT.  
 DO NOT SCALE DRAWINGS.  
 COPYRIGHT RESERVED.




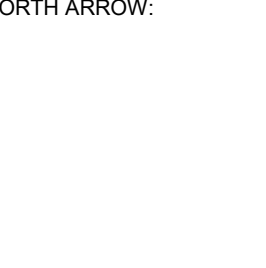
BUILDING SECTION N-S



GARAGE RAMP SECTIONS

No.	DESCRIPTION	DATE
SPC 09	ISSUED FOR SPC PARKING REVISION	2024-08-16
SPC 08	ISSUED FOR SPC CITY COMMENTS	2024-07-24
SPC 07	PRE-CONSULT PHASE 3 COMMENT RESPONSE	2024-06-18
SPC 06	ISSUED FOR SPC RE-APPLICATION	2023-08-15
SPC 05	ISSUED FOR SPC RND 2 COMMENTS	2022-03-28
SPC 04	ISSUED FOR SPC RND 1 COMMENTS	2022-03-18
SPC 03	ISSUED FOR COORDINATION	2022-03-14
SPC 02	ISSUED FOR SPC APPLICATION	2021-12-13
SPC 01	ISSUED FOR SPC COORDINATION	2021-12-06

REVISIONS:

ARCHITECT SEAL:  NORTH ARROW: 

CLIENT:

 **THE WESTMOUNT**  
 ML Westboro Inc.

ARCHITECT:

  
 56 Beech Street, Ottawa, Ontario K1S 3J6  
 t.613.724.9932 f.613.724.1209 www.rodericklaley.ca

PROJECT TITLE:

  
**THE WESTMOUNT**  
 398 - 406 ROOSEVELT AVE.

SHEET TITLE:

**BUILDING SECTIONS**

DRAWN: R.I.B.	CHECKED: R.V.
SCALE: 1 : 125	SHEET No.:
PROJECT No.:	<b>A-201</b>

PAPER SIZE: ISO Full (841x1189) (mm)



IT IS THE RESPONSIBILITY OF THE APPROPRIATE CONTRACTOR TO CHECK AND VERIFY ALL DIMENSIONS ON SITE AND TO REPORT ALL ERRORS AND/OR OMISSIONS TO THE ARCHITECT.

ALL CONTRACTORS MUST COMPLY WITH ALL PERTINENT CODES AND BY-LAWS.

THIS DRAWING MAY NOT BE USED FOR CONSTRUCTION UNTIL SIGNED BY THE ARCHITECT.


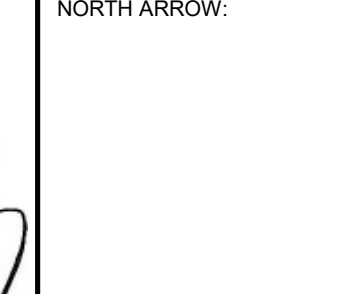
DO NOT SCALE DRAWINGS.

COPYRIGHT RESERVED.



No.	DESCRIPTION	YYYY-MM-DD
SPC 09	ISSUED FOR SPC PARKING REVISION	2024-08-16
SPC 08	ISSUED FOR SPC CITY COMMENTS	2024-07-24
SPC 07	PRE-CONSULT PHASE 3 COMMENT RESPONSE	2024-06-18
SPC 06	ISSUED FOR SPC RE-APPLICATION	2023-08-15
SPC 05	ISSUED FOR SPC RND 2 COMMENTS	2022-03-28
SPC 04	ISSUED FOR SPC RND 1 COMMENTS	2022-03-18
SPC 03	ISSUED FOR COORDINATION	2022-03-14
SPC 02	ISSUED FOR SPC APPLICATION	2021-12-13
SPC 01	ISSUED FOR SPC COORDINATION	2021-12-06

REVISIONS:

ARCHITECT SEAL:  NORTH ARROW: 

CLIENT:

 **THE WESTMOUNT**  
ML Westboro Inc.

ARCHITECT:

**rla/architecture**  
56 Beech Street, Ottawa, Ontario K1S 3J6  
t.613.724.9932 f.613.724.1209 www.roderickclairey.ca

PROJECT TITLE:

  
**THE WESTMOUNT**  
398 - 406 ROOSEVELT AVE.

SHEET TITLE:

**3D PERSPECTIVES**

DRAWN: R.I.B.	CHECKED: R.V.
SCALE:	SHEET No:
PROJECT No: 2122	<b>A-301</b>

PAPER SIZE: ISO Full (841 x 1189 mm)