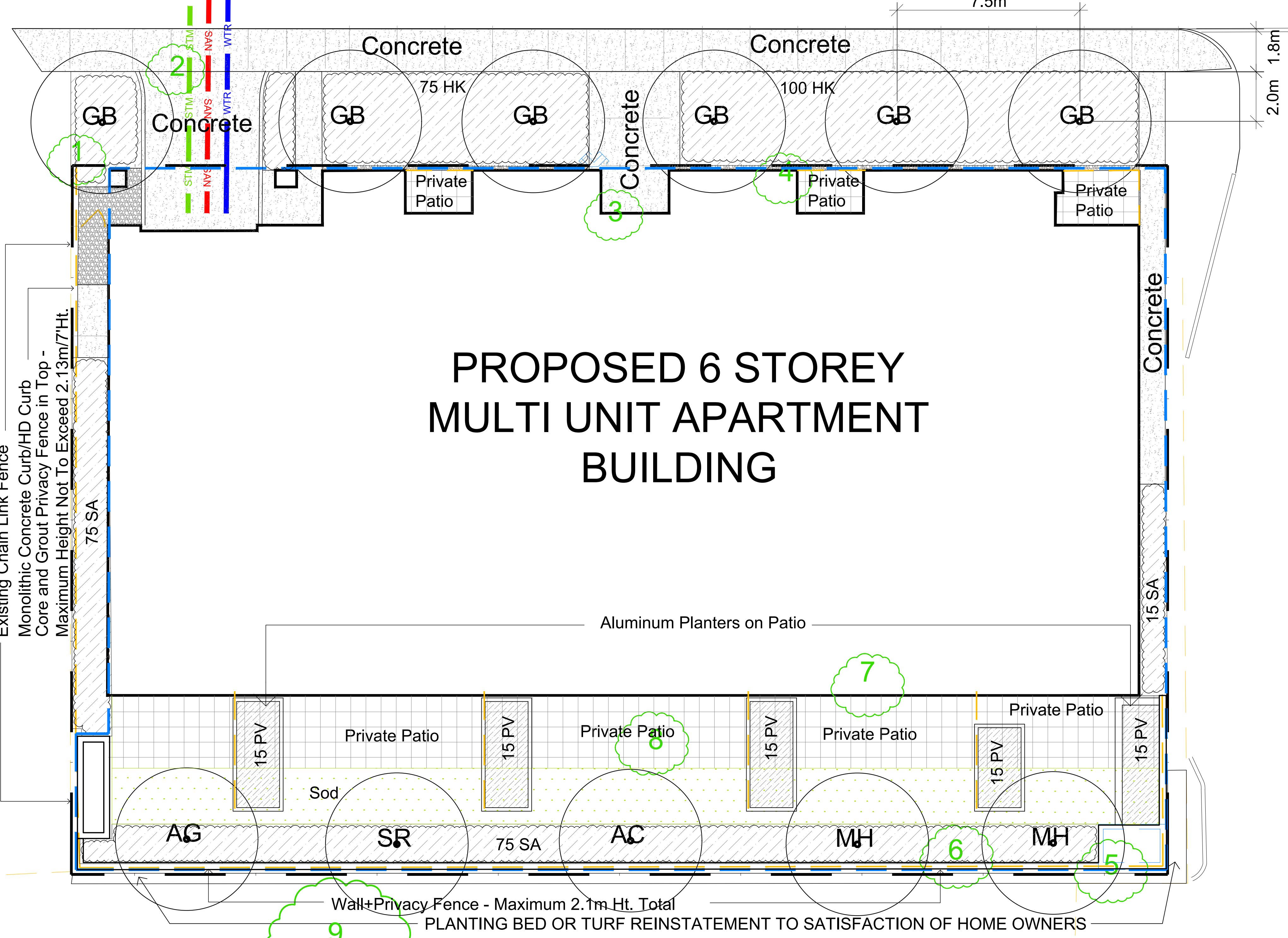
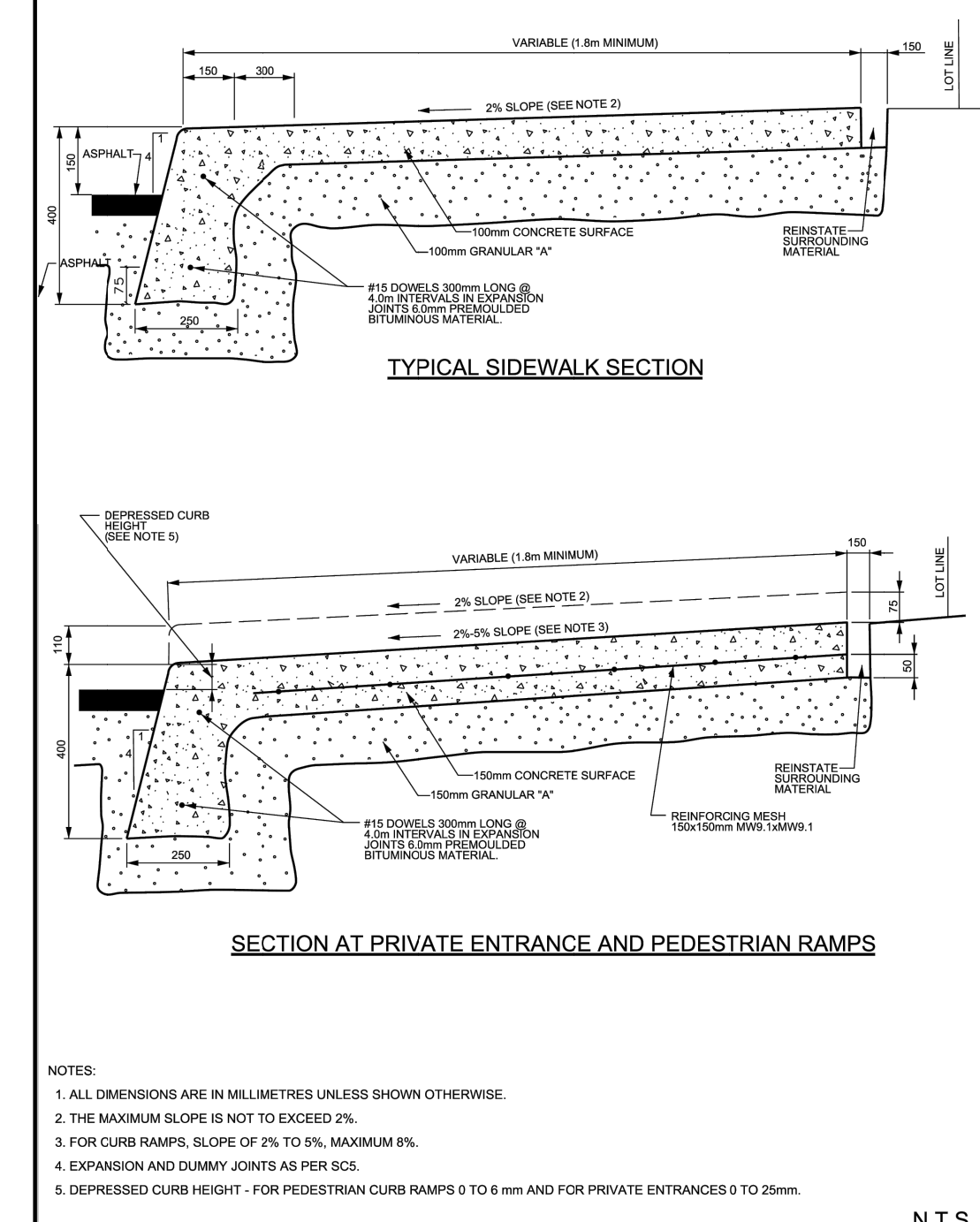


# ROOSEVELT AVENUE



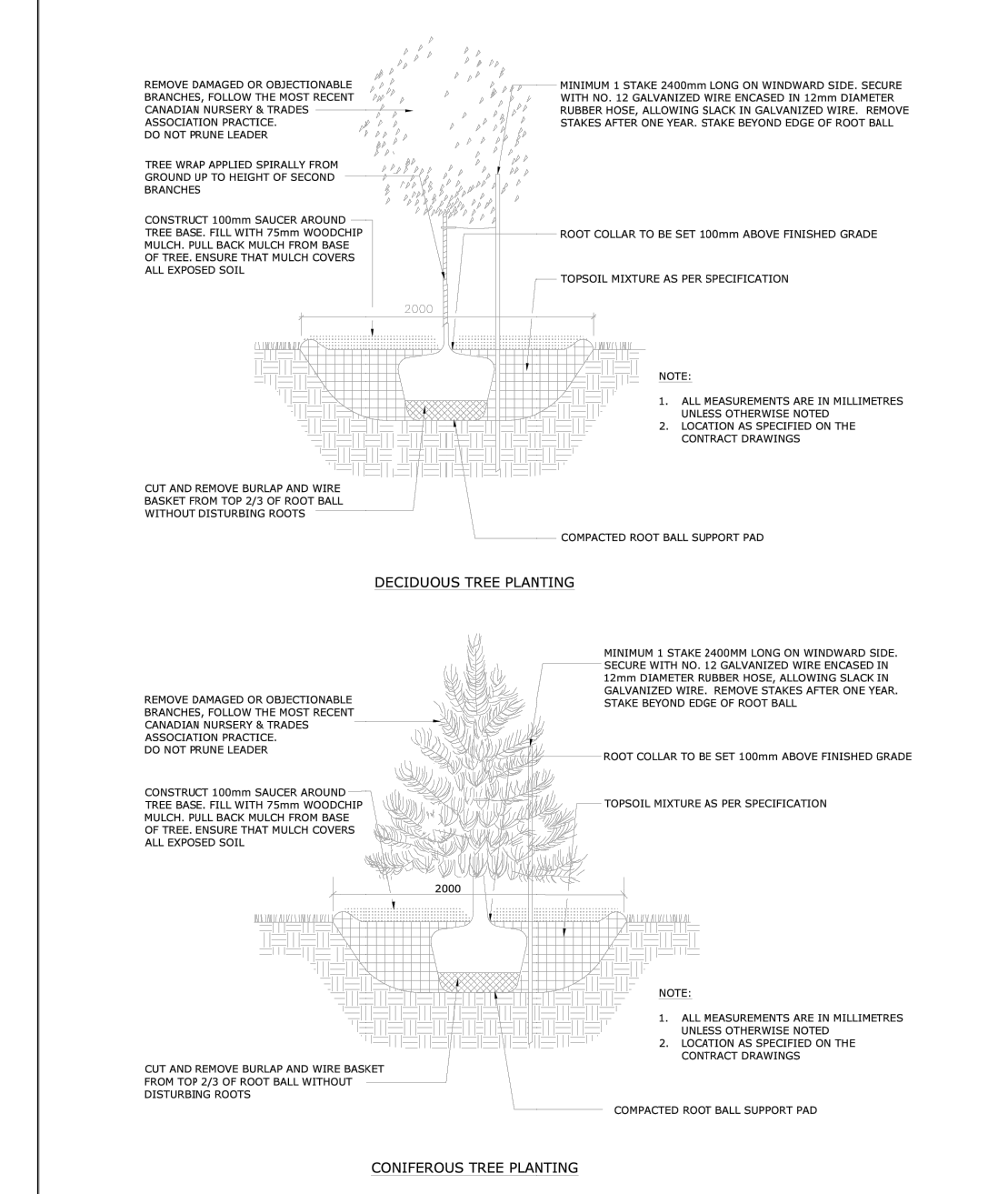
## PROPOSED 6 STOREY MULTI UNIT APARTMENT BUILDING

CONCRETE AND PLANTING DETAILS WITHIN THE CITY ROW TO MEET OR EXCEED CITY STANDARD DETAILS SC2 Monolithic Curb and Sidewalk, L3 Planting Pit, L4 Shrub Bed, L5 Continuous Planting Bed AS REQUESTED BY THE CITY OF OTTAWA



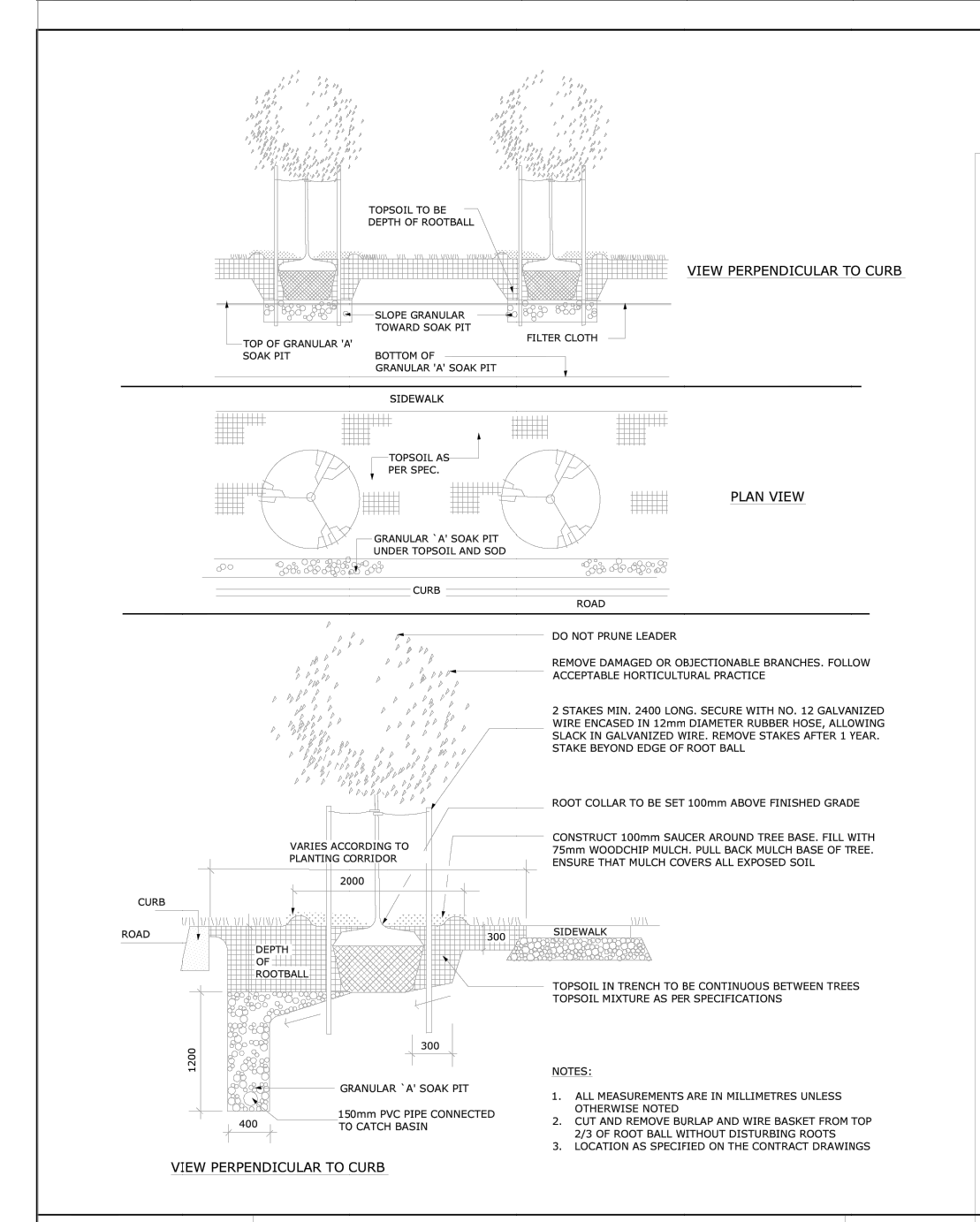
MONOLITHIC CONCRETE CURB AND SIDEWALK

DATE:	MAY 2001
REV:	MARCH 2016
DWG. No.:	SC2



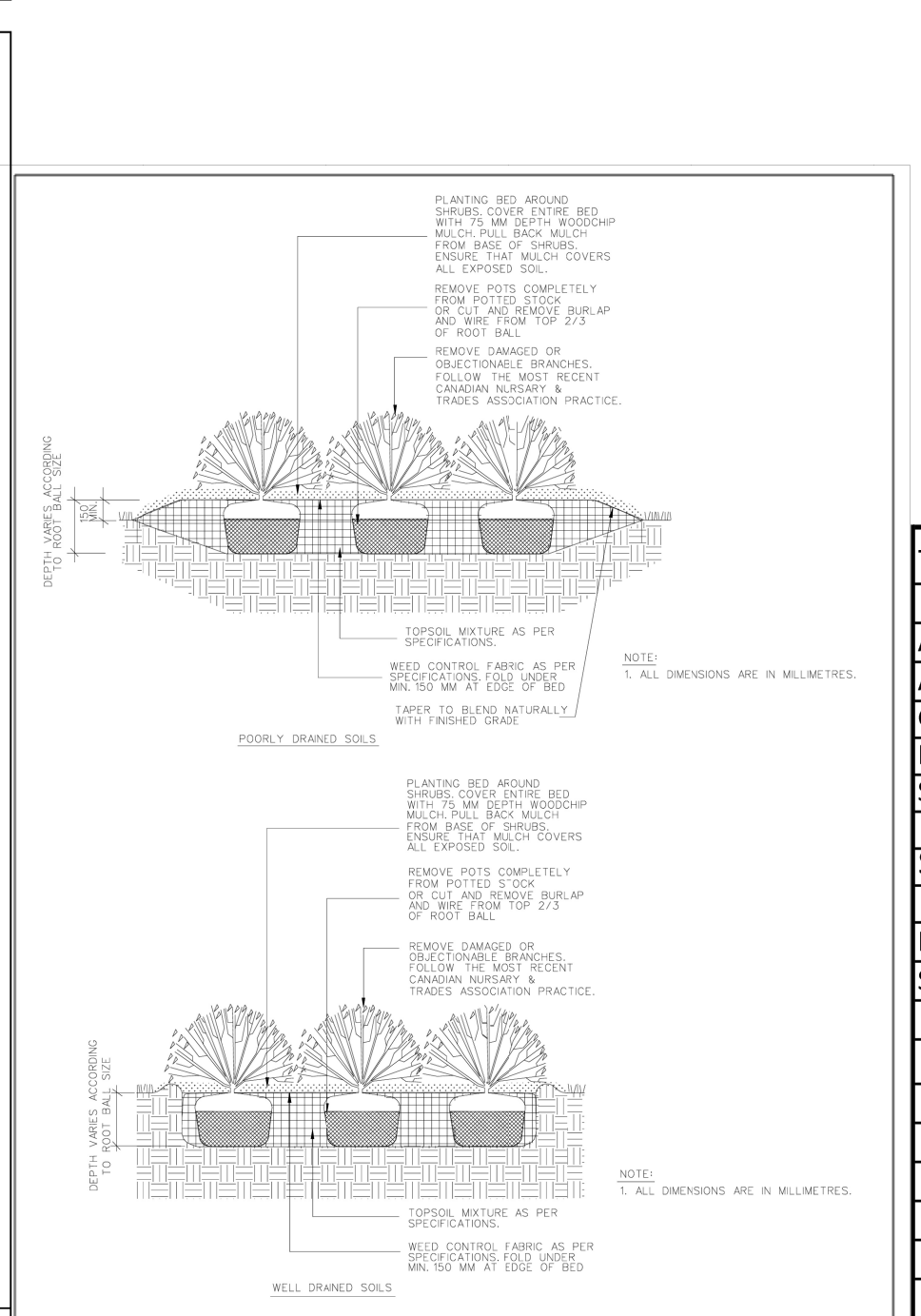
PLANTING PIT, WELL DRAINED SOILS (ROAD ALLOWANCE)

DATE:	MAY 2001
REV:	JAN 2017
DWG. No.:	L3



CONTINUOUS PLANTING BED

DATE:	MAY 2001
REV:	JAN 2015
DWG. No.:	L5



SHRUB BED PLANTING

DATE:	MAY 2001
REV:	JAN 2015
DWG. No.:	L4

TREES 398-406 ROOSEVELT THE WESTMOUNT

Code	Qty.	Botanical Name	Common Name	Size	Condition
AC	1	Amelanchier canadensis	Tree Serviceberry	50mm cal	B + B specimen
AG	1	Aesculus glabra	Ohio Buckeye	50mm cal	B + B specimen
GB	6	Ginkgo biloba	Maidenhair Tree	70mm cal	B + B specimen
MH	2	Malus 'Harvest Gold'	Harvest Gold Crabapple	60mm cal	B + B specimen
SR	1	Syringa reticulata	Japanese Tree Lilac	60mm cal	B + B specimen

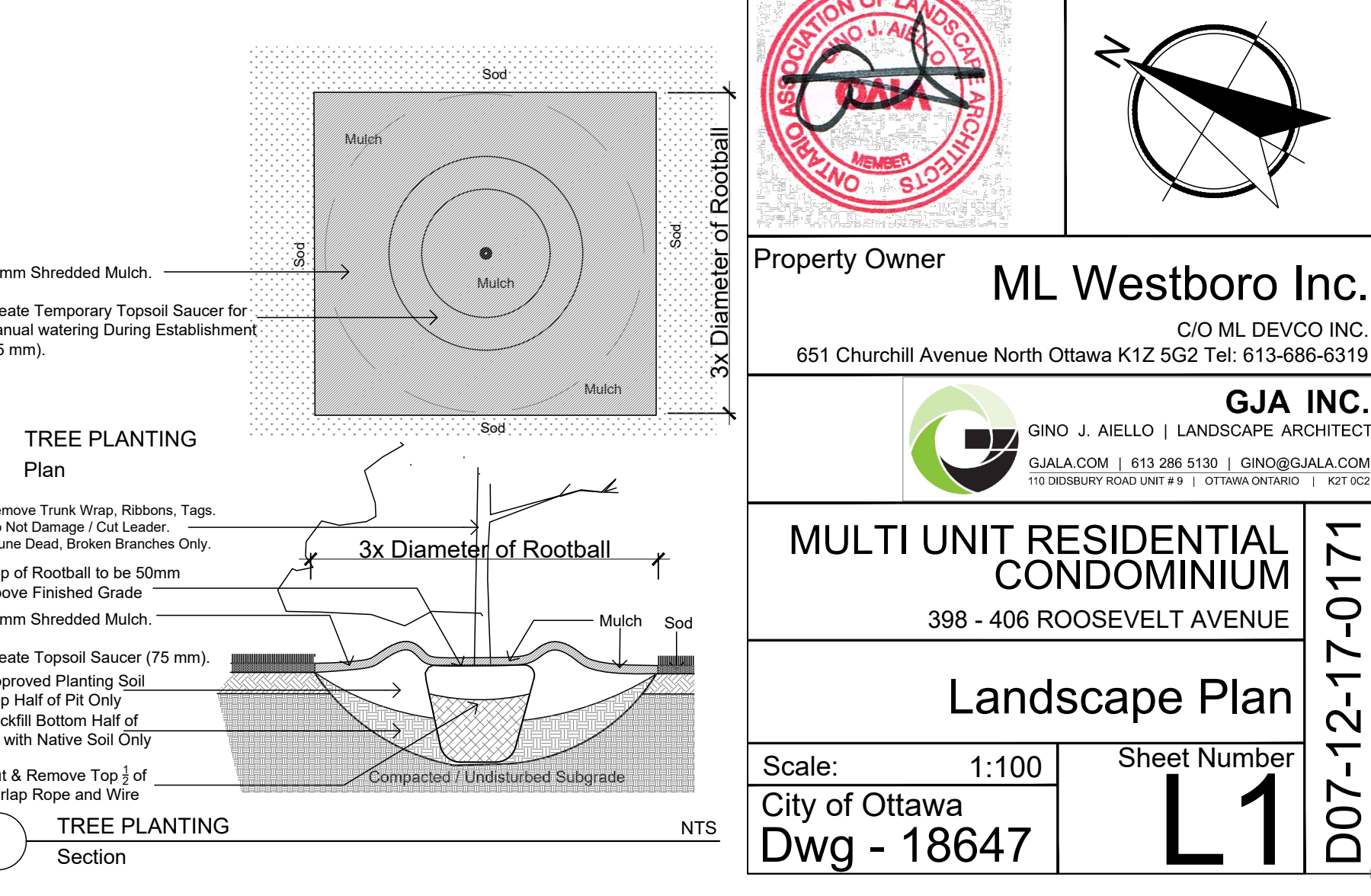
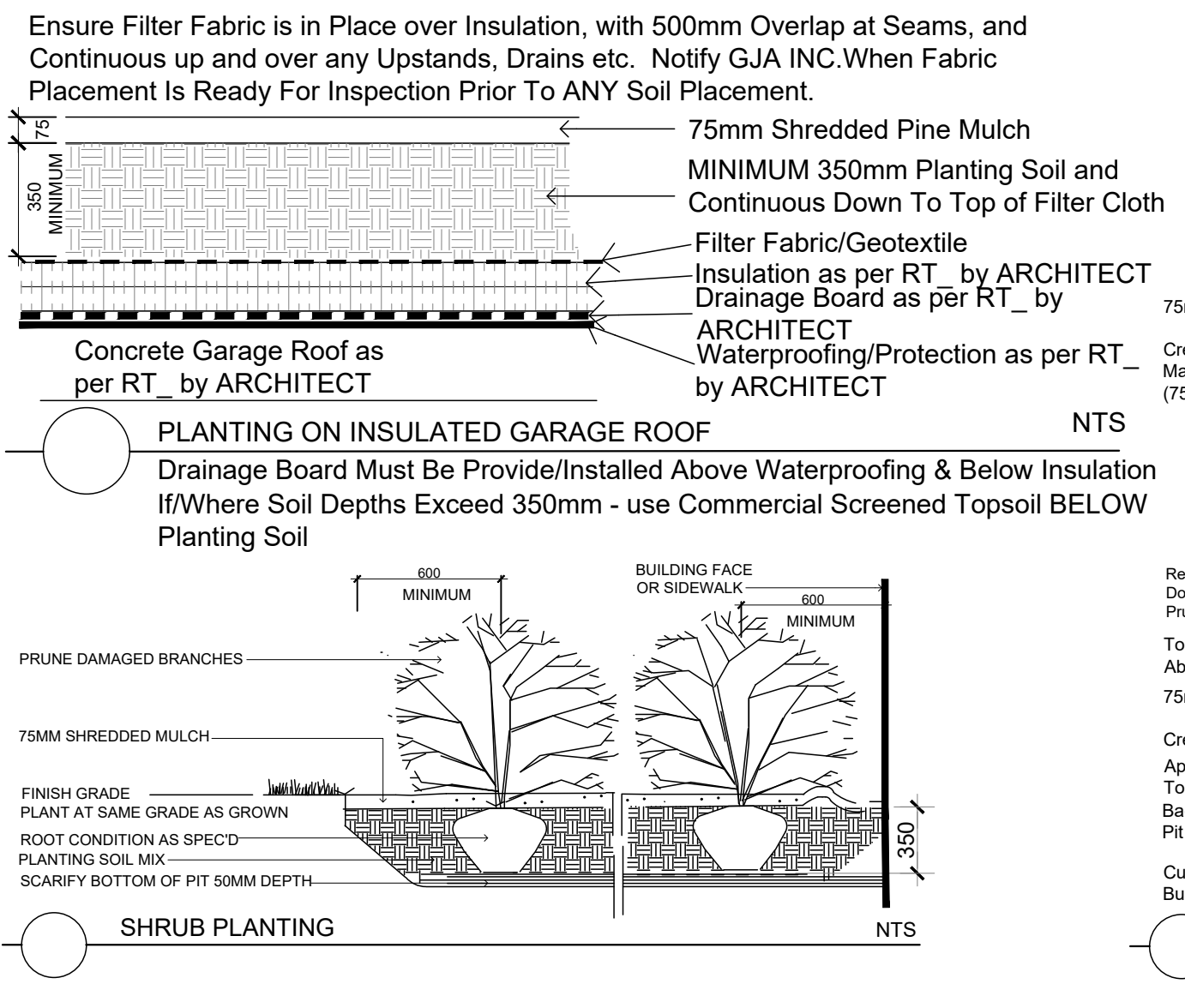
SHRUBS - 398-406 ROOSEVELT

Code	Qty.	Botanical Name	Common Name	Size	Condition
HK	175	Hypericum kalmianum	St. John's Wort	40cm Ht.	Pot
SA	165	Spiraea alba	Meadowsweet	60cm Ht.	Pot
PV	75	Panicum virgatum	Switch Grass	9cm Pot	

PERENNIALS GROUNDCOVERS ORNAMENTAL GRASS 398-406 ROOSEVELT THE WESTMOUNT

Code	Qty.	Botanical Name	Common Name	Condition
25	Hypericum kalmianum	St. John's Wort	40cm Ht.	Pot
15	Spiraea alba	Meadowsweet	60cm Ht.	Pot
50	Calamagrostis acutiflula 'Overdam'	Feather Reed Grass	9cm Pot	
250	Geranium macrorrhizum	Bigroot Geranium	9cm Pot	
250	Geranium psilostemon 'Gerwat'	Rozanne Geranium	9cm Pot	
50	Parthenocissus tricuspidata	Boston Ivy	9cm Pot	
50	Panicum virgatum	Switch Grass	9cm Pot	

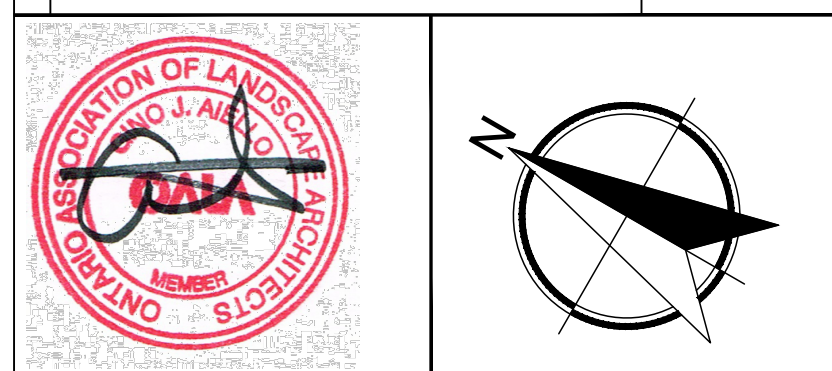
TO BE DISTRIBUTED ON SITE BY GJA INC.



Drawing Remains the Property of/Copyright Reserved by GJA INC. Do Not Use or Reproduce Without Approval of GJA INC.  
NOT To Be Used For Construction Unless indicated by Revision: "FOR LANDSCAPE CONSTRUCTION"  
Contractor is Responsible for Verification of Site Locations of all Utilities. Report any Discrepancies Between Site and Drawing Immediately to GJA INC. Do NOT Proceed Until Clarified.  
PLANTING MIX TO BE APPROVED BY LANDSCAPE ARCHITECT | PLANT MATERIAL TO MEET CNLA STANDARDS/BE APPROVED BY LANDSCAPE ARCHITECT PRIOR TO PLANTING | ALL MATERIALS & WORK TO BE MAINTAINED UNTIL FINAL ACCEPTANCE & INCLUDE 1 YEAR WARRANTY FROM DATE OF FINAL ACCEPTANCE | PROVIDE WATERING OF ALL PLANT MATERIAL AS REQUIRED FOR PROPER ESTABLISHMENT UNTIL END OF WARRANTY PERIOD | REFER TO CIVIL ENGINEER'S DRAWING FOR ELEVATIONS / GRADING |  
The Landscape Plan is to be read in conjunction with the grading, servicing, site and survey plan | Bare root material to be planted in season only | All plant material locations to be staked on site by the landscape contractor and checked by the landscape architect prior to planting | All trees to be preserved on or directly adjacent to the site will be protected | Plant material are to be installed a minimum of: 3.0m away from any part of any hydro transformer, 3.0m corridor between a fire hydrant and the curb, a 2.5m radius beside or behind a fire hydrant, 2.0m from any servicing/utility line or structure |

- LANDSCAPE PLAN LEGEND
- Proposed Pedestrian Pavement
  - Proposed Concrete Pavement
  - Proposed Deciduous Tree
  - Proposed Planting Bed
  - Proposed Riverwash Stone On Filter Cloth
  - Proposed Custom Aluminum Privacy Screen
- BELOW GRADE SERVICES REFER TO CIVIL /CUP
- U/G Water Service
  - U/G Storm Service
  - U/G Sanitary Service
  - FD Siamese Connection REFER TO TCR BY IFS
  - Existing Tree - Refer TO TCR by IFS for Details/Actions

8	REVISED SITE/GROUND FLOOR PLAN	2024 05 01
7	CITY ROW DETAILS ADDED	JUNE 29 2022
6	FOR BUILDING PERMIT	JUNE 10 2022
5	SITE PLAN CONTROL SUBMISSION 4	MAY 12 2022
4	FOR TENDER REVIEW	APRIL 27 2022
3	SITE PLAN CONTROL SUBMISSION 3	MARCH 31 2022
2	SITE PLAN CONTROL SUBMISSION 2	JANUARY 17 2022
1	SITE PLAN CONTROL SUBMISSION 1	DECEMBER 10 2021
0	REVIEW/COORDINATION	NOVEMBER 2021
#	Revision	Date



Property Owner  
**ML Westboro Inc.**  
C/O ML DEVCO INC.  
651 Churchhill Avenue North Ottawa K1Z 5G2 Tel: 613-686-6319

**GJA INC.**  
GINO J. AIELLO | LANDSCAPE ARCHITECT  
GJALA.COM | 613 286 5130 | GINO@GJALA.COM  
115 DOBRYNY ROAD UNIT # 8 | OTTAWA, ONTARIO | K1T 0G2

**MULTI UNIT RESIDENTIAL CONDOMINIUM**  
398 - 406 ROOSEVELT AVENUE

Landscape Plan  
Scale: 1:100  
City of Ottawa  
Dwg - 18647  
Sheet Number  
**L1**  
D07-12-17-0171