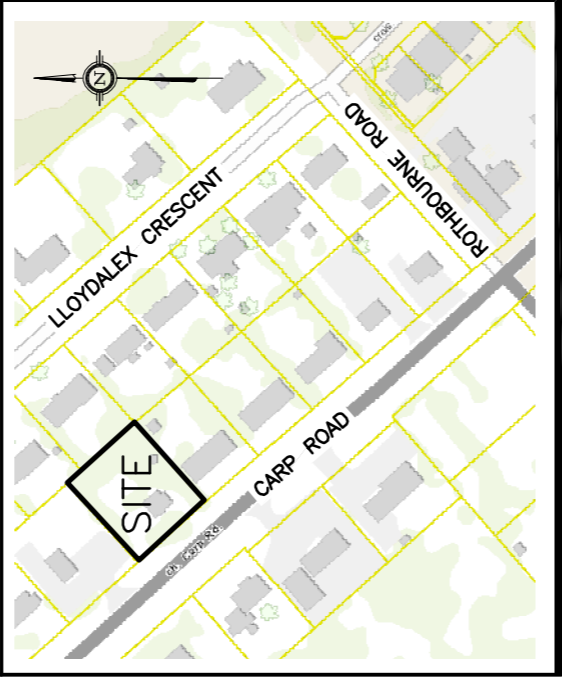


LEGEND

- FFL FINISHED FLOOR ELEVATION
- TOF TOP OF FOUNDATION
- PROPERTY LINE
- CR.Z CRITICAL ROOT ZONE
- WS/WM WATER SERVICE/WATERMAIN
- EXISTING GRADE ELEVATION
- PROPOSED GRADE ELEVATION
- EXISTING SLOPE OF GRADE
- PROPOSED SLOPE OF GRADE
- 150mm BARRIER CURB
- D.C. DEPRESSED CURB
- SILT FENCE BARRIER
- ASPHALT PAVEMENT
- GRANULAR PAVEMENT
- INTERLOCK PAVERS
- INFILTRATION TRENCH

KEY PLAN



No.	DATE	REVISION
5	JUL 2-24	RE-ISSUED FOR APPROVAL
4	JUL 31-23	RE-ISSUED FOR APPROVAL
3	MAR 24-23	ISSUED FOR APPROVAL
2	DEC 15-22	ISSUED FOR COORDINATION
1	OCT 27-22	PRELIMINARY

D. B. GRAY ENGINEERING INC.
 Professional Engineer
 700 Long Point Circle
 Ottawa, Ontario
 d.gray@dbgrayengineering.com

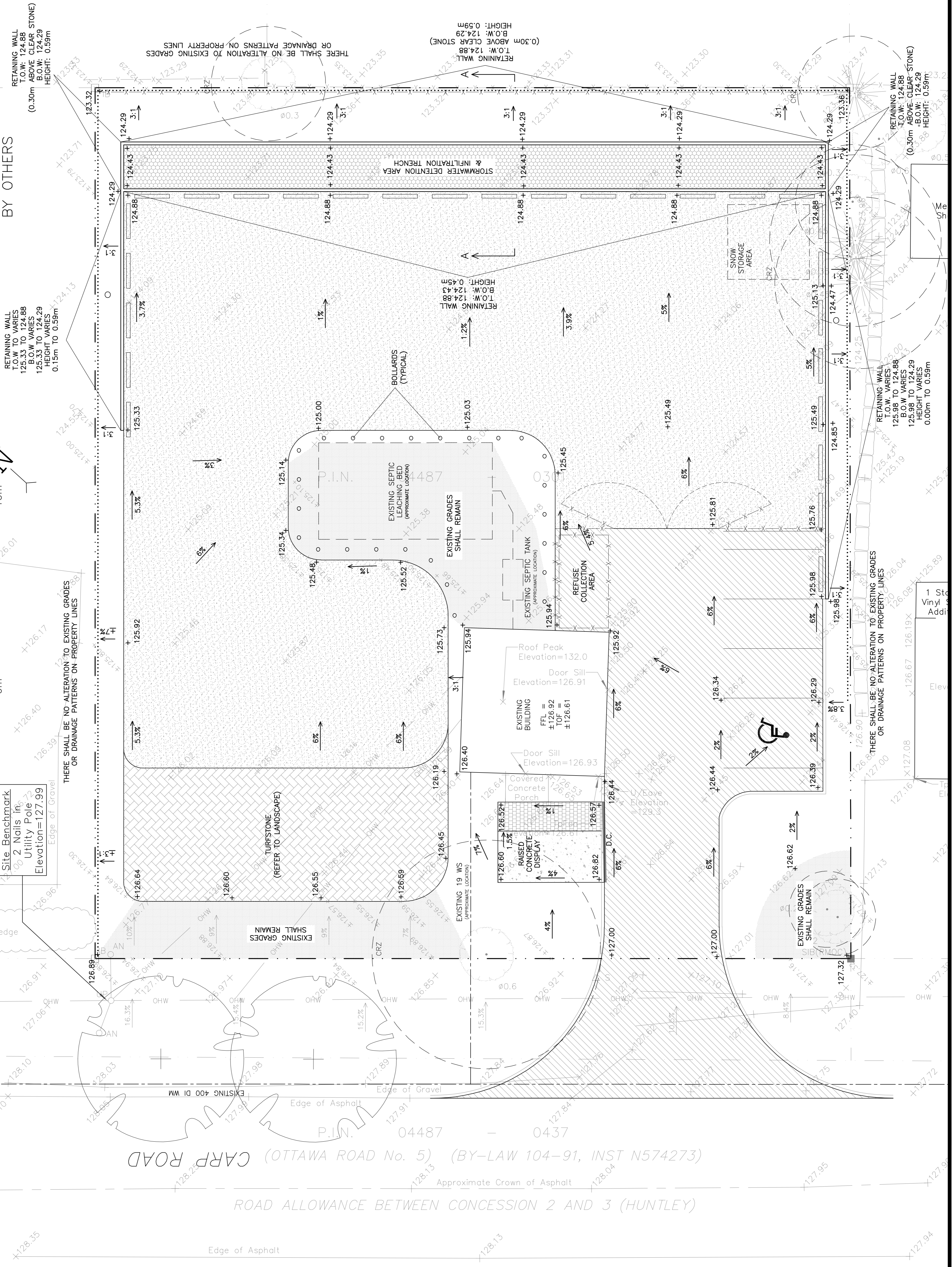
Project
 417 AUTO SALES
 2026 CARP ROAD
 CARP, ONTARIO

Drawing Title
 SITE SERVICING PLAN,
 GRADING PLAN AND
 EROSION & SEDIMENT
 CONTROL PLAN

Engineer's Seal
 D.B.G.
 H. Scale 1:100
 V. Scale 1:100
 Date OCT 27-22
 Job No. 21021
 Drawing No. **C-1**
 of **5**
 NOT VALID UNLESS
 SIGNED & DATED

REFER TO NOTES & DETAILS
 ON DRAWINGS C-2 & C-3

RETAINING
 WALLS TO
 BE DESIGNED
 BY OTHERS



Site Benchmark
 2 Nails In
 Utility Pole 72
 Elevation = 127.99
 Edge of Gravel

THERE SHALL BE NO ALTERATION TO EXISTING GRADES
 OR DRAINAGE PATTERNS ON PROPERTY LINES

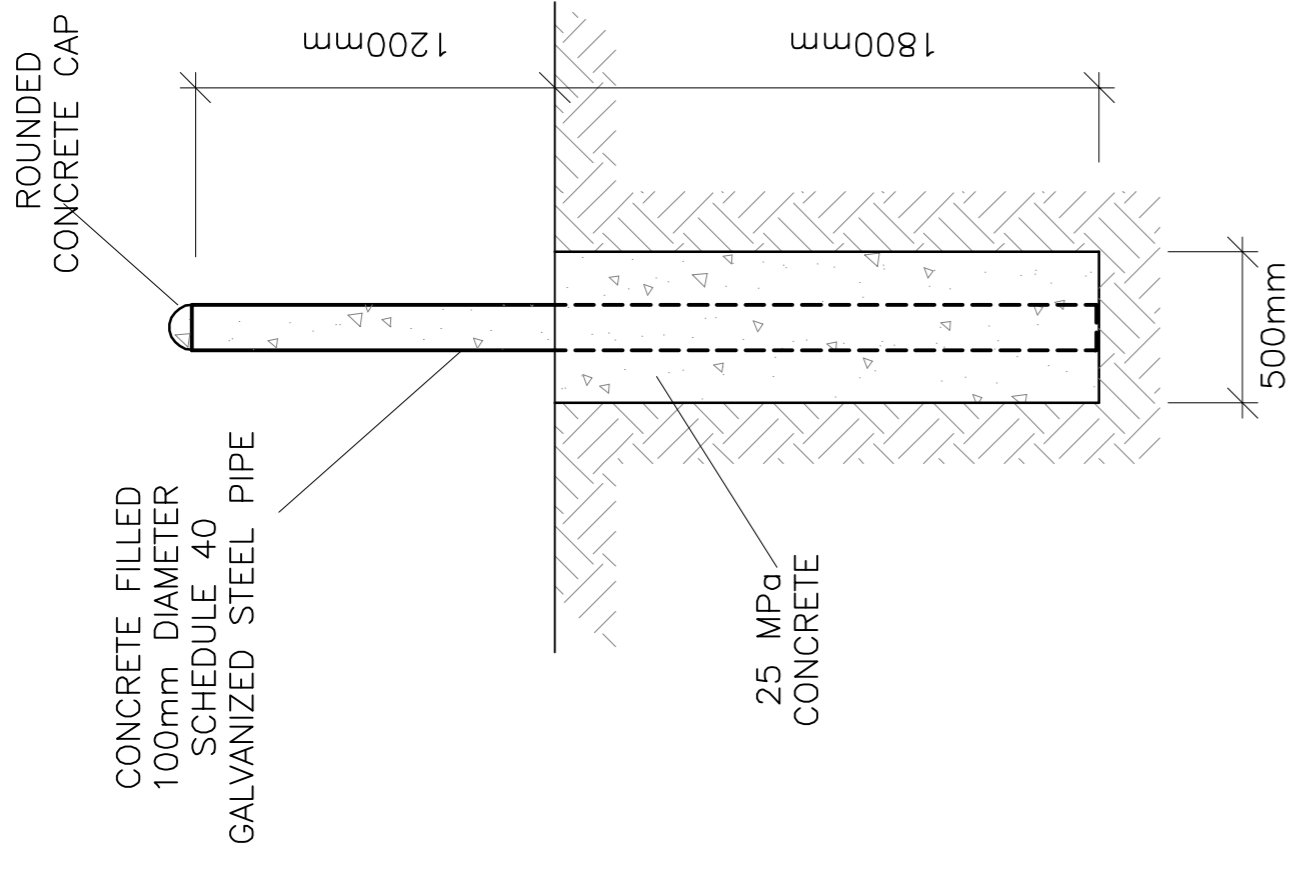
CARP ROAD (OTTAWA ROAD No. 5) (BY-LAW 104-91, INST N574273)

ROAD ALLOWANCE BETWEEN CONCESSION 2 AND 3 (HUNTLEY)

Edge of Asphalt

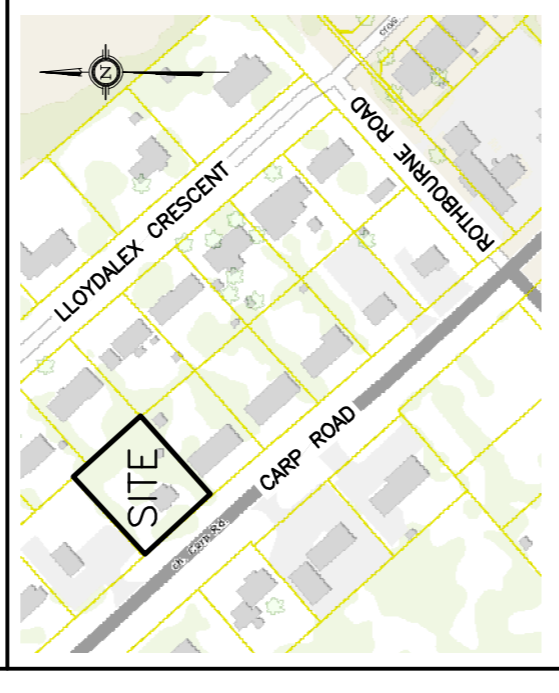
Approximate Crown of Asphalt

1 St
 Vinyl
 Addi
 Elev



BOLLARDS
(TYPICAL)
N.T.S.

KEY PLAN



No.	DATE	REVISION
5	JUL 2-24	RE-ISSUED FOR APPROVAL
4	JUL 31-23	RE-ISSUED FOR APPROVAL
3	MAR 24-23	ISSUED FOR APPROVAL
2	DEC 15-22	ISSUED FOR COORDINATION
1	OCT 27-22	PRELIMINARY

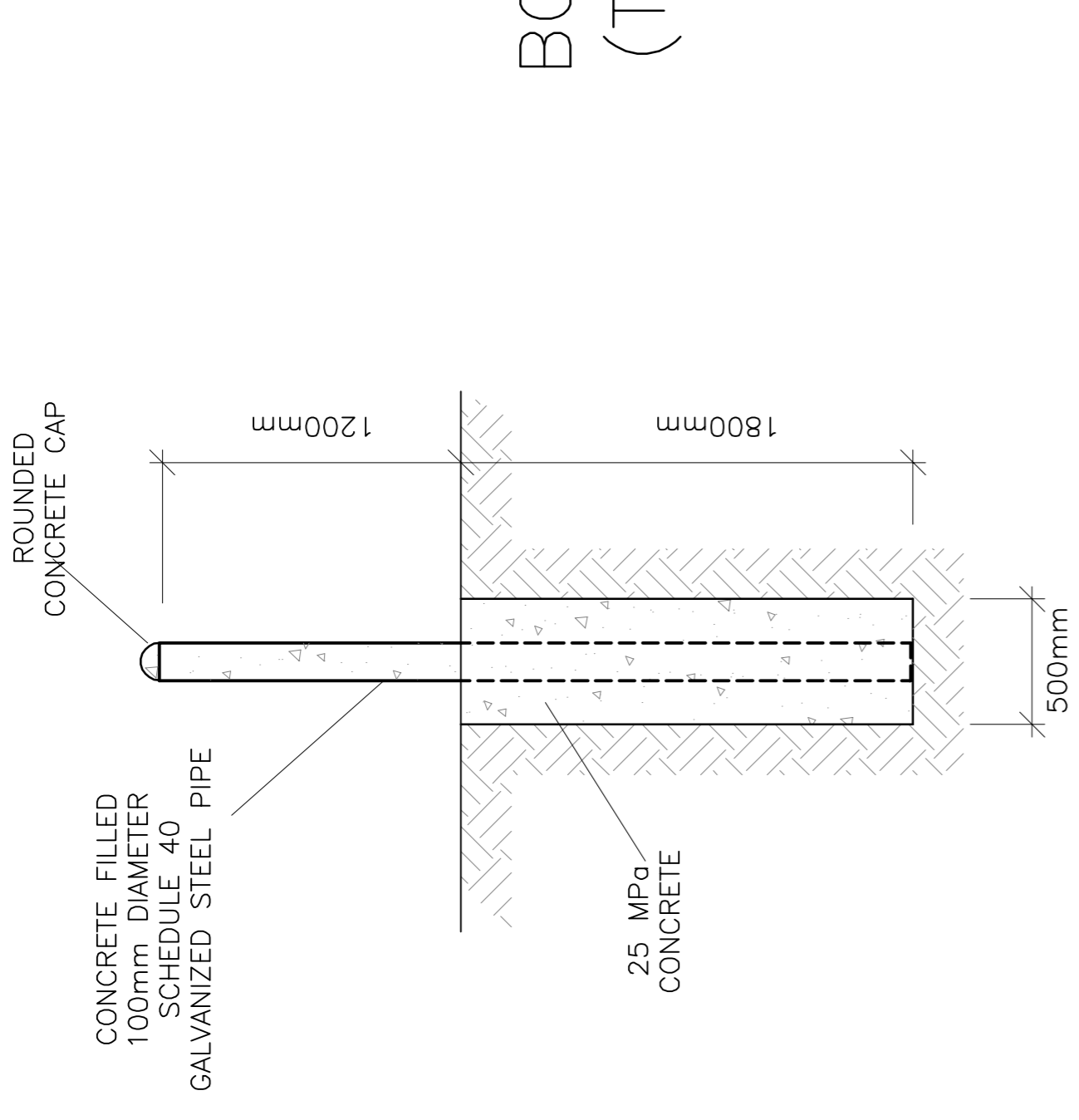
D.B. GRAY ENGINEERING INC.
 Stormwater Management • Grading & Drainage • Sewer & Sanitary Sewers • Pavement
 700 Long Point Circle
 Ottawa, Ontario
 d.gray@dbgrayengineering.com
 613-425-8044

Project
417 AUTO SALES
2026 CARP ROAD
 CARP, ONTARIO

Drawing Title
DETAILS

Engineer's Seal

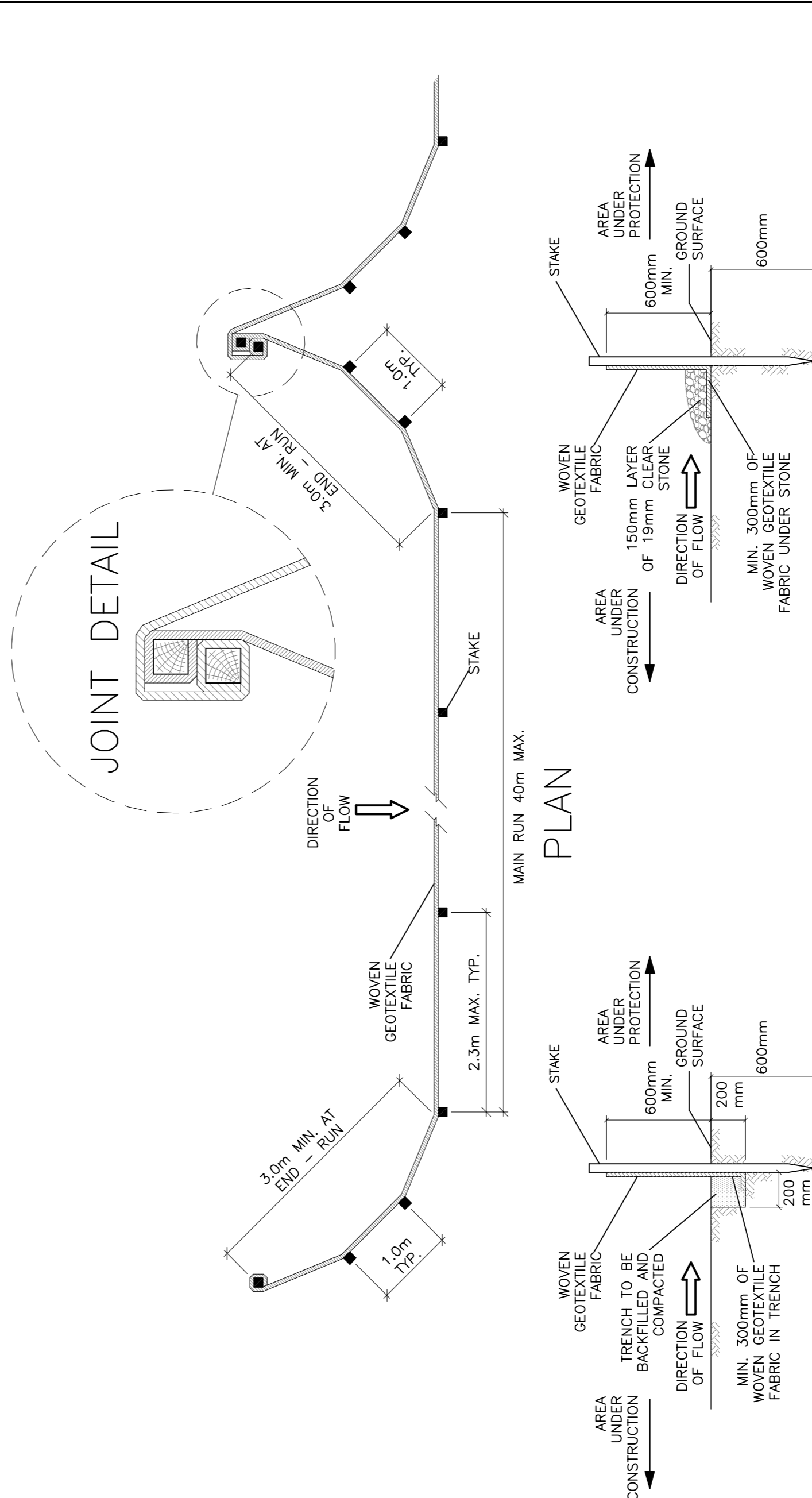
 Drawn: D.B.G.
 H. Scale
 V. Scale
 Date: OCT 27-22
 Job No.: 21021
 Drawing No.: **C-2**
of 5
 NOT VALID UNLESS SIGNED & DATED



SECTION A-A
 STORMWATER DETENTION AREA
 & INFILTRATION TRENCH
 (INSTALL AT THE END OF CONSTRUCTION)
 N.T.S.

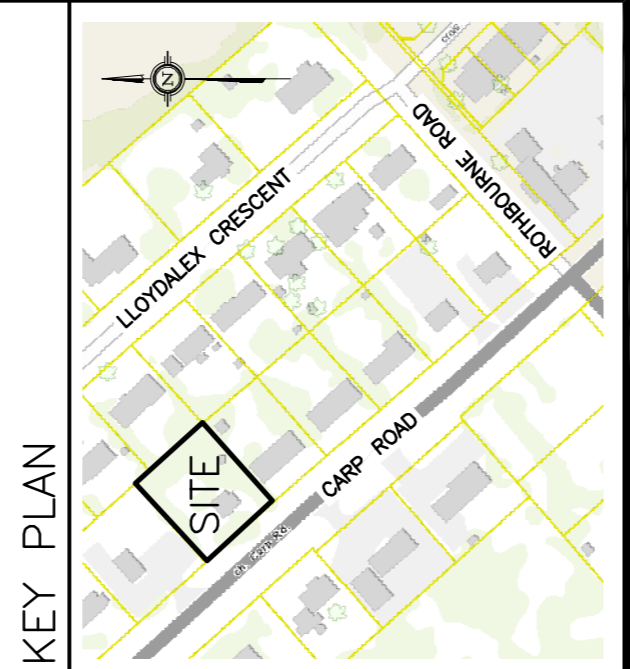
AS PER THE GEOTECHNICAL REPORT: BEDROCK 5 TO 15 m BELOW EXISTING GRADE.

AS PER THE GEOTECHNICAL REPORT: LONG-TERM GROUNDWATER LEVEL IS MORE THAN 5.5 m BELOW EXISTING GRADE.



SECTION
(FROZEN GROUND)

SILT FENCE BARRIER
 AS PER OPSD 219.110
 (MODIFIED FOR FROZEN GROUND)
 N.T.S.



No.	DATE	REVISION
3	MAR 24-23	ISSUED FOR APPROVAL
2	DEC 15-22	ISSUED FOR COORDINATION
1	OCT 27-22	PRELIMINARY

D. B. GRAY ENGINEERING INC.
 Professional Engineer - Ontario
 700 Long Point Circle
 Ottawa, Ontario K1L 1A1
 d.gray@dbgrayengineering.com

Project
417 AUTO SALES
 2026 CARP ROAD
 CARP, ONTARIO

Drawing Title
PRE-DEVELOPMENT DRAINAGE PLAN

Engineer's Seal
 D.B.G.
 H. Scale 1:100
 V. Scale 1:100
 Date OCT 27-22
 Job No. 21021
 Drawing No. **C-4 of 5**
 LICENSED PROFESSIONAL ENGINEER
 PROVINCE OF ONTARIO
 NOT VALID UNLESS SIGNED & DATED

