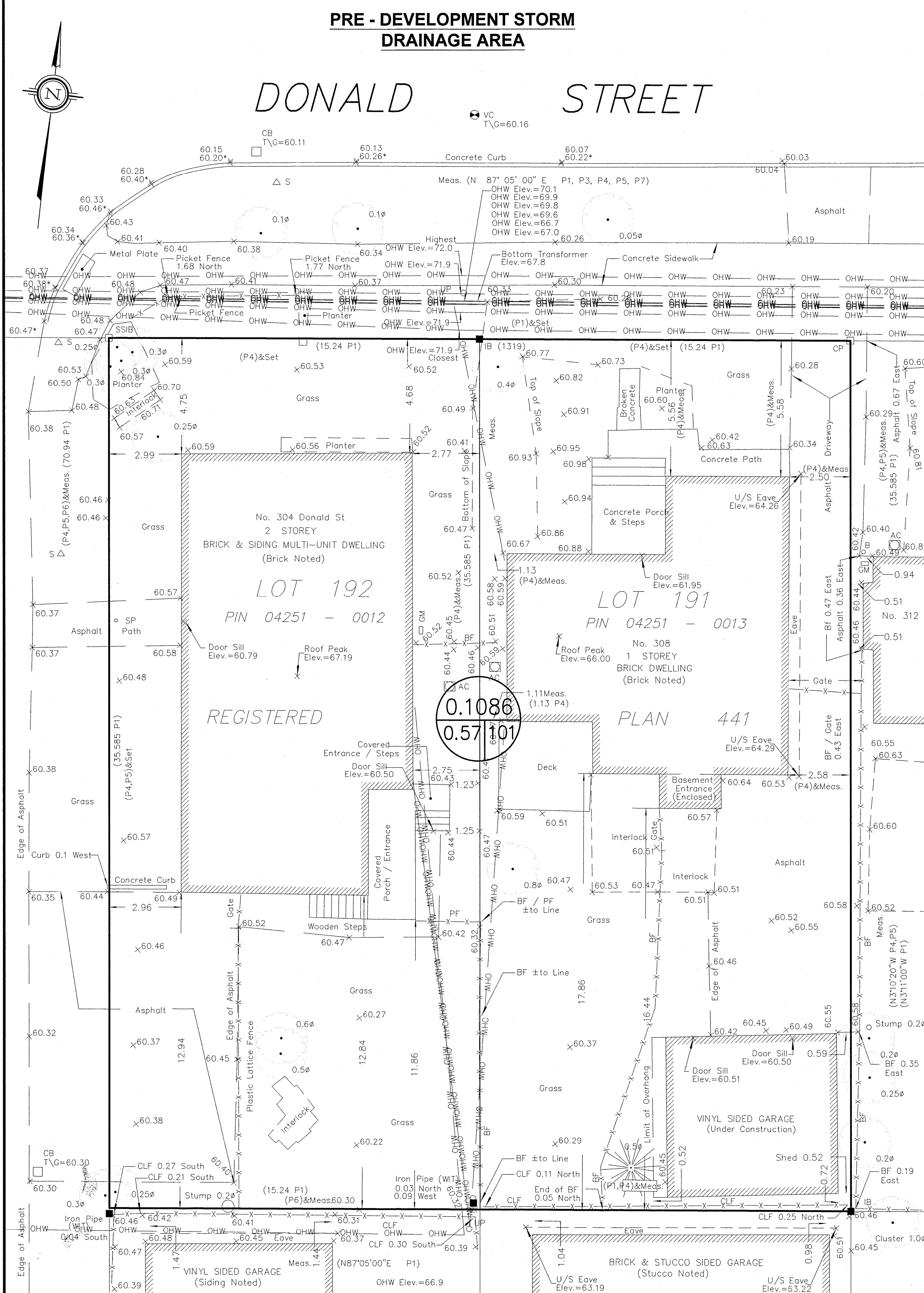
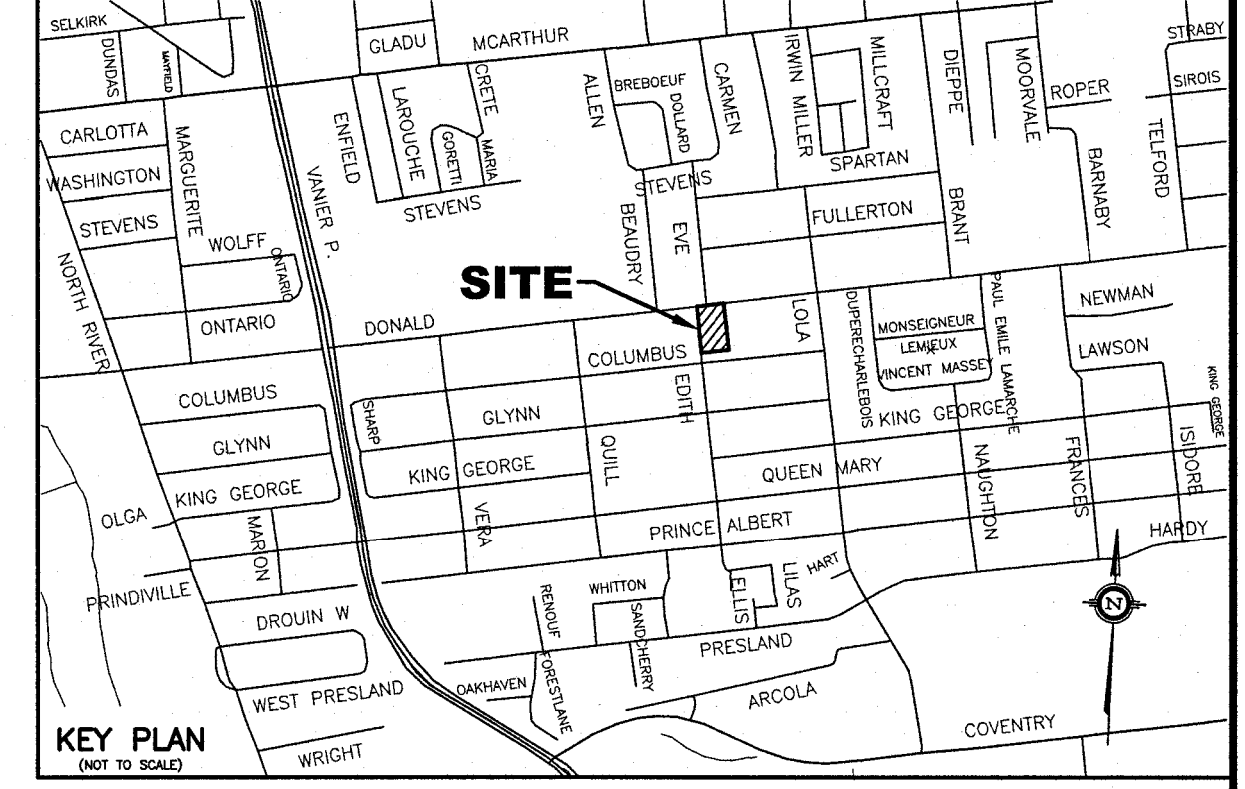
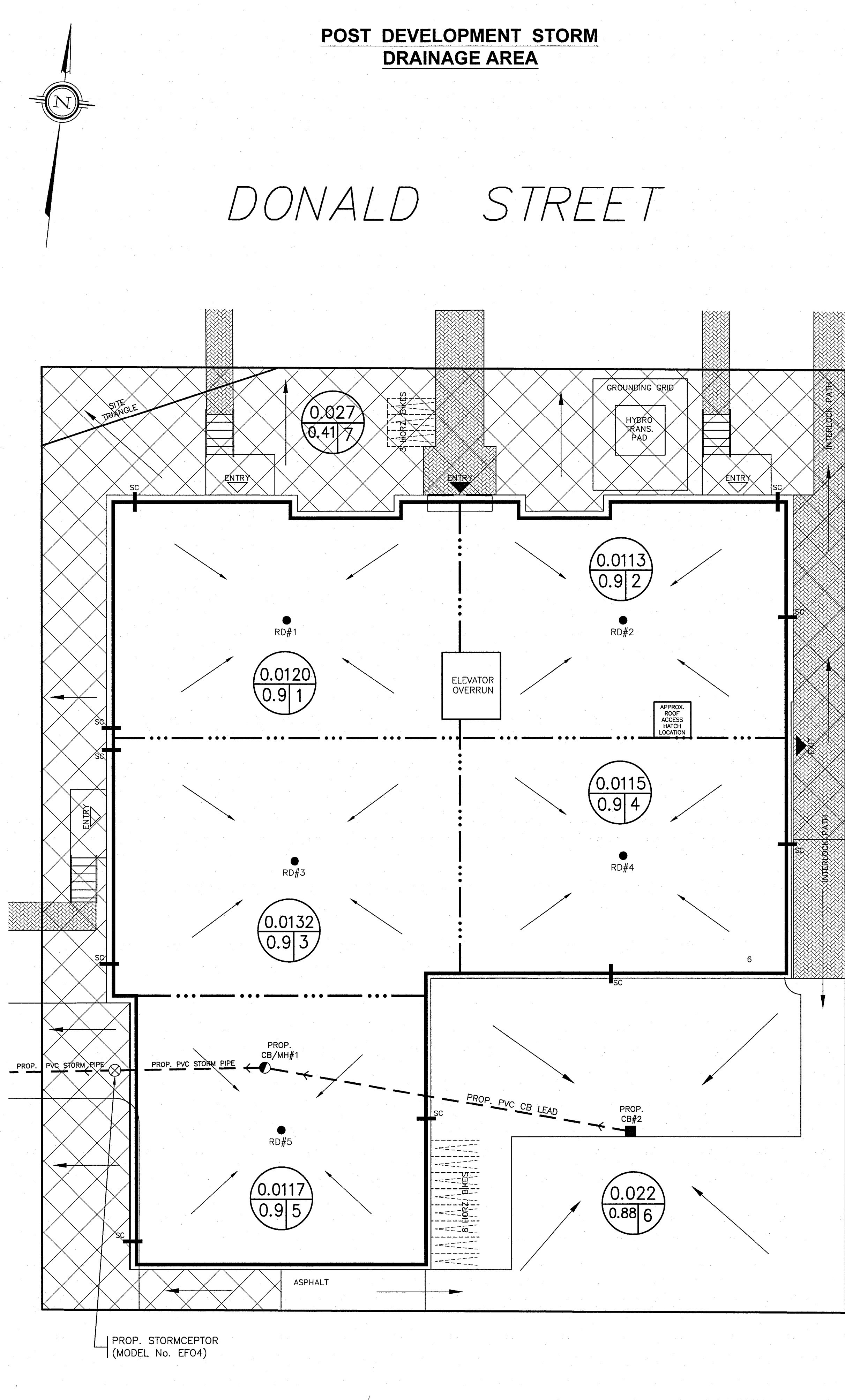


**PRE - DEVELOPMENT STORM DRAINAGE AREA**



**POST DEVELOPMENT STORM DRAINAGE AREA**



- LEGEND**
- RD#1 PROPOSED ROOF DRAIN NUMBER AND LOCATION
  - SC PROPOSED ROOF SCUPPER LOCATION
  - PROPOSED HIGH RIDGE LINE
  - 0.03 / 0.91 DRAINAGE AREA IN HECTARES / DRAINAGE NODE NUMBER
  - COEFFICIENT OF RUNOFF
  - ▨ UN-CONTROLLED DRAINAGE AREA
  - ▩ CONTROLLED DRAINAGE AREA
- NOTES**
- NODE #1, NODE #2, NODE #3, NODE #4 AND NODE #5 REPRESENTS BUILDING ROOF AREA (SWM CONTROLLED AREA) AND NODE #6 REPRESENTS REAR YARD CONTROLLED DRAINAGE AREA
  - NODE #7 REPRESENTS UNCONTROLLED DRAINAGE AREA
  - NODE #101 REPRESENTS PRE-DEVELOPMENT DATA.

NO.	REVISION	DATE	BY

SCALE

1:100 HORIZONTAL

VERTICAL

DESIGN T.L.M.  
CHECKED T.L.M.  
DRAWN BY P.M.  
CHECKED T.L.M.  
APPROVED T.L.M.

PROJECT

304-308 DONALD STREET  
LOTS 191 AND 192  
REGISTERED PLAN 441  
CITY OF OTTAWA

DRAWING TITLE

**STORM DRAINAGE AREA PLAN**

T.L. MAK ENGINEERING CONSULTANTS LTD.  
CONSULTING ENGINEERS

PROJECT No. 824-63 DATE APRIL 2024 DRAWING No. D-1

