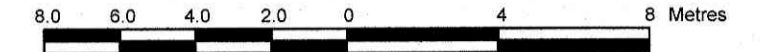


**SURVEYOR'S REAL PROPERTY REPORT**  
**PART 1** Plan of  
**PART OF LOTS 49 AND 50**  
**REGISTERED PLAN 86**  
**CITY OF OTTAWA**

Surveyed by Annis, O'Sullivan, Vollebek Ltd.

Scale 1 : 200



Metric

DISTANCES SHOWN ON THIS PLAN ARE IN METRES AND CAN BE CONVERTED TO FEET BY DIVIDING BY 0.3048

**Surveyor's Certificate**

I CERTIFY THAT :

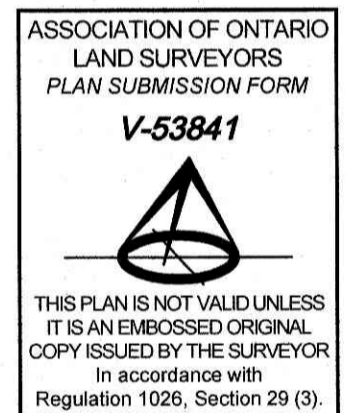
- This survey and plan are correct and in accordance with the Surveys Act and the Surveyors Act and the regulations made under them.
- The survey was completed on the 13th day of July, 2023.

July 27, 2023  
 Date

E. H. Herveyer  
 Ontario Land Surveyor

**PART 2**  
 THIS PLAN MUST BE READ IN CONJUNCTION WITH SURVEY REPORT DATED: July 27, 2023

ANNIS, O'SULLIVAN, VOLLEBEK LTD. grants to 2701292 Ontario Ltd. ("The Client"), their solicitors, mortgagees, and other related parties, permission to use original, signed, sealed copies of the Surveyor's Real Property Report in transactions involving The Client.



SITE AREA = 862.6 m<sup>2</sup>

Bearings are grid, derived from Can-Net 2016 Real Time Network GPS observations, and are referenced to specified control points 01919880184 and 019198434761, MTM Zone 9 ( 76°30' West Longitude ) NAD-83 (original).

For bearing comparison, a rotation of 0°01'10" clockwise was applied to bearings on P3 and a rotation of 0°01'25" clockwise was applied to bearings on P4.

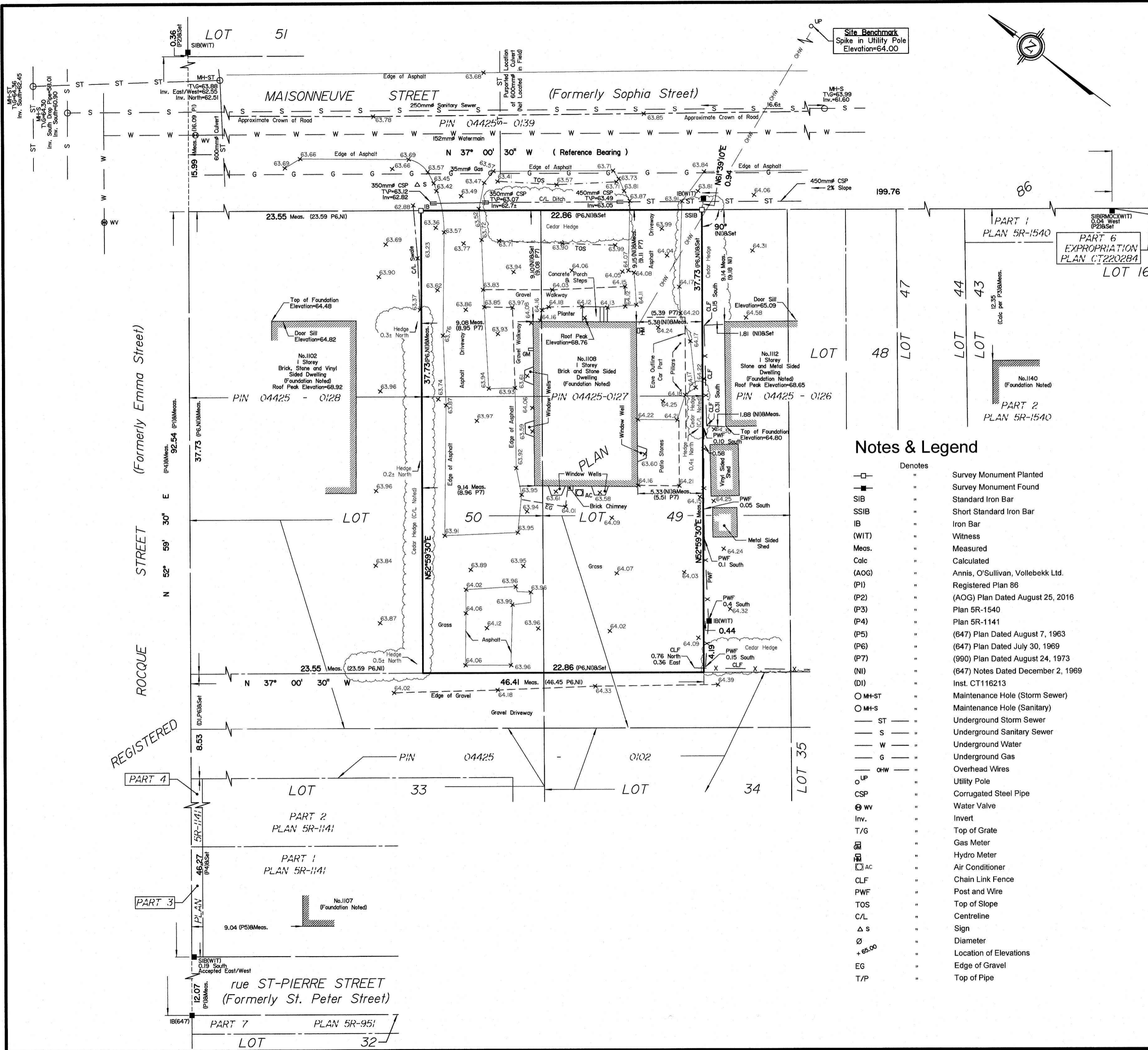
**UTILITY NOTES**

- This drawing cannot be accepted as acknowledging all of the utilities and it will be the responsibility of the user to contact the respective utility authorities for confirmation.
- Only visible surface utilities were located.
- A field location of underground plant by the pertinent utility authority is mandatory before any work involving breaking ground, probing, excavating etc.
- Underground Utility information compiled from City of Ottawa Utility sheet reference: C-31-24, C-31-18, Drawing No. 70-1677-01-12 and Drawing No. 98082-P2.

**ELEVATION NOTES**

- Elevations shown are derived from City of Ottawa monument No. 2016-0027 having an elevation of 61.165 metres referred to the CGVD28 geodetic datum.
- It is the responsibility of the user of this information to verify that the job benchmark has not been altered or disturbed and that its relative elevation and description agrees with the information shown on this drawing.

© Annis, O'Sullivan, Vollebek Ltd., 2023. "THIS PLAN IS PROTECTED BY COPYRIGHT"  
**ANNIS, O'SULLIVAN, VOLLEBEK LTD.**  
 14 Concourse Gate, Suite 500  
 Nepean, Ont. K2E 7S6  
 Phone: (613) 727-0850 / Fax: (613) 727-1079  
 Email: Nepean@avold.com  
 Ontario Land Surveyors Job No. E-3508-23 Ontario Inc. PH-149.50 P166 D-E F



**Notes & Legend**

□	Denotes	Survey Monument Planted
■	"	Survey Monument Found
SIB	"	Standard Iron Bar
SSIB	"	Short Standard Iron Bar
IB	"	Iron Bar
(WIT)	"	Witness
Meas.	"	Measured
Calc	"	Calculated
(AOG)	"	Annis, O'Sullivan, Vollebek Ltd.
(P1)	"	Registered Plan 86
(P2)	"	(AOG) Plan Dated August 25, 2016
(P3)	"	Plan 5R-1540
(P4)	"	Plan 5R-1141
(P5)	"	(647) Plan Dated August 7, 1963
(P6)	"	(647) Plan Dated July 30, 1969
(P7)	"	(990) Plan Dated August 24, 1973
(NI)	"	(647) Notes Dated December 2, 1969
(DI)	"	Inst. CT116213
○ MH-ST	"	Maintenance Hole (Storm Sewer)
○ MH-S	"	Maintenance Hole (Sanitary)
— ST	"	Underground Storm Sewer
— S	"	Underground Sanitary Sewer
— W	"	Underground Water
— G	"	Underground Gas
— OHW	"	Overhead Wires
○ UP	"	Utility Pole
CSP	"	Corrugated Steel Pipe
⊕ WV	"	Water Valve
Inv.	"	Invert
T/G	"	Top of Grate
⊕	"	Gas Meter
⊕	"	Hydro Meter
⊕ AC	"	Air Conditioner
CLF	"	Chain Link Fence
PWF	"	Post and Wire
TOS	"	Top of Slope
C/L	"	Centreline
Δ S	"	Sign
∅	"	Diameter
+ 65.00	"	Location of Elevations
EG	"	Edge of Gravel
T/P	"	Top of Pipe