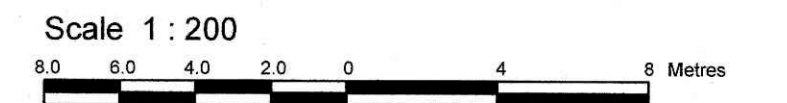


**SURVEYOR'S REAL PROPERTY REPORT**  
**PART 1** Plan of  
**LOTS 63 AND 65**  
**REGISTERED PLAN 86**  
**CITY OF OTTAWA**

Surveyed by Annis, O'Sullivan, Vollebek Ltd.



**Metric**  
 DISTANCES SHOWN ON THIS PLAN ARE IN METRES AND CAN BE CONVERTED TO FEET BY DIVIDING BY 0.3048

**Surveyor's Certificate**

I CERTIFY THAT:  
 1. This survey and plan are correct and in accordance with the Surveys Act and the Surveyors Act and the regulations made under them.  
 2. The survey was completed on the 27th day of June, 2023.

July 27, 2023  
 Date  
 E. H. Henweyer  
 Ontario Land Surveyor

**PART 2** THIS PLAN MUST BE READ IN CONJUNCTION WITH SURVEY REPORT DATED July 27, 2023

ANNIS, O'SULLIVAN, VOLLEBEK LTD. grants to 270292 Ontario Ltd. (LOT 63) & 1702533 Ontario Inc. (LOT 65) ("The Client"), their solicitors, mortgagees, and other related parties, permission to use original, signed, sealed copies of the Surveyor's Real Property Report in transactions involving The Client.

**Notes & Legend**

Denotes	
□	Survey Monument Planted
■	Survey Monument Found
SIB	Standard Iron Bar
IB	Iron Bar
IB#	Round Iron Bar
CP	Concrete Pin
SSIB*	Short Standard Iron Bar (0.3 Long)
(WIT)	Witness
Meas.	Measured
Prop.	Proportioned
Calc.	Calculated
(AOG)	Annis, O'Sullivan, Vollebek Ltd.
(PI)	Registered Plan 86
(P2)	Plan 4R-25844
(P3)	(AOG) Plan dated Aug. 25, 2016
(P4)	(990) Plan dated August 9, 1977
(P5)	(990) Plan dated August 21, 1974
(P6)	(990) Plan dated October 24, 1974
(P7)	(990) Plan dated December 9, 1982
(P8)	Plan 5R-1118
○ MH-ST	Maintenance Hole (Storm Sewer)
○ MH-S	Maintenance Hole (Sanitary)
— ST —	Underground Storm Sewer
— S —	Underground Sanitary Sewer
— W —	Underground Water
— G —	Underground Gas
— OW —	Overhead Wires
○ CB	Round Catch Basin
○ UP	Utility Pole
○ AN	Anchor
○ LS	Light Standard
CSP	Corrugated Steel Pipe
○ FH	Fire Hydrant
○ WV	Water Valve
○ DI	Ditch Inlet
Invt.	Invert
T/G	Top of Grate
T/P	Top of Pipe
TOS	Top of Slope
○ GM	Gas Meter
○ HM	Hydro Meter
□ AC	Air Conditioner
○ FP	Flag Pole
—	Gate
BF	Board Fence
RWC	Concrete Retaining Wall
RWT	Timber Retaining Wall
○	Diameter
+ 65.00	Location of Elevations
+ 65.00*	Top of Concrete Curb and Retaining Wall Elevation
○ C/L	Centreline
○	Deciduous Tree
○	Coniferous Tree

**ELEVATION NOTES**

- Elevations shown are derived from City of Ottawa monument No. 2016-0027 having an elevation 81.165 metres referred to the CGVD 28 geodetic datum.
- It is the responsibility of the user of this information to verify that the job benchmark has not been altered or disturbed and that its relative elevation and description agrees with the information shown on this drawing.

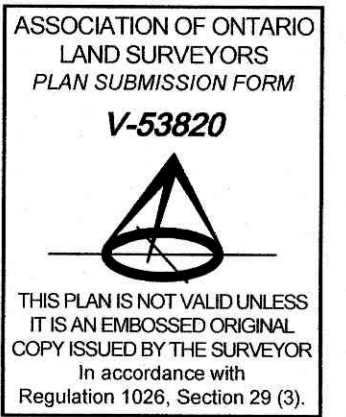
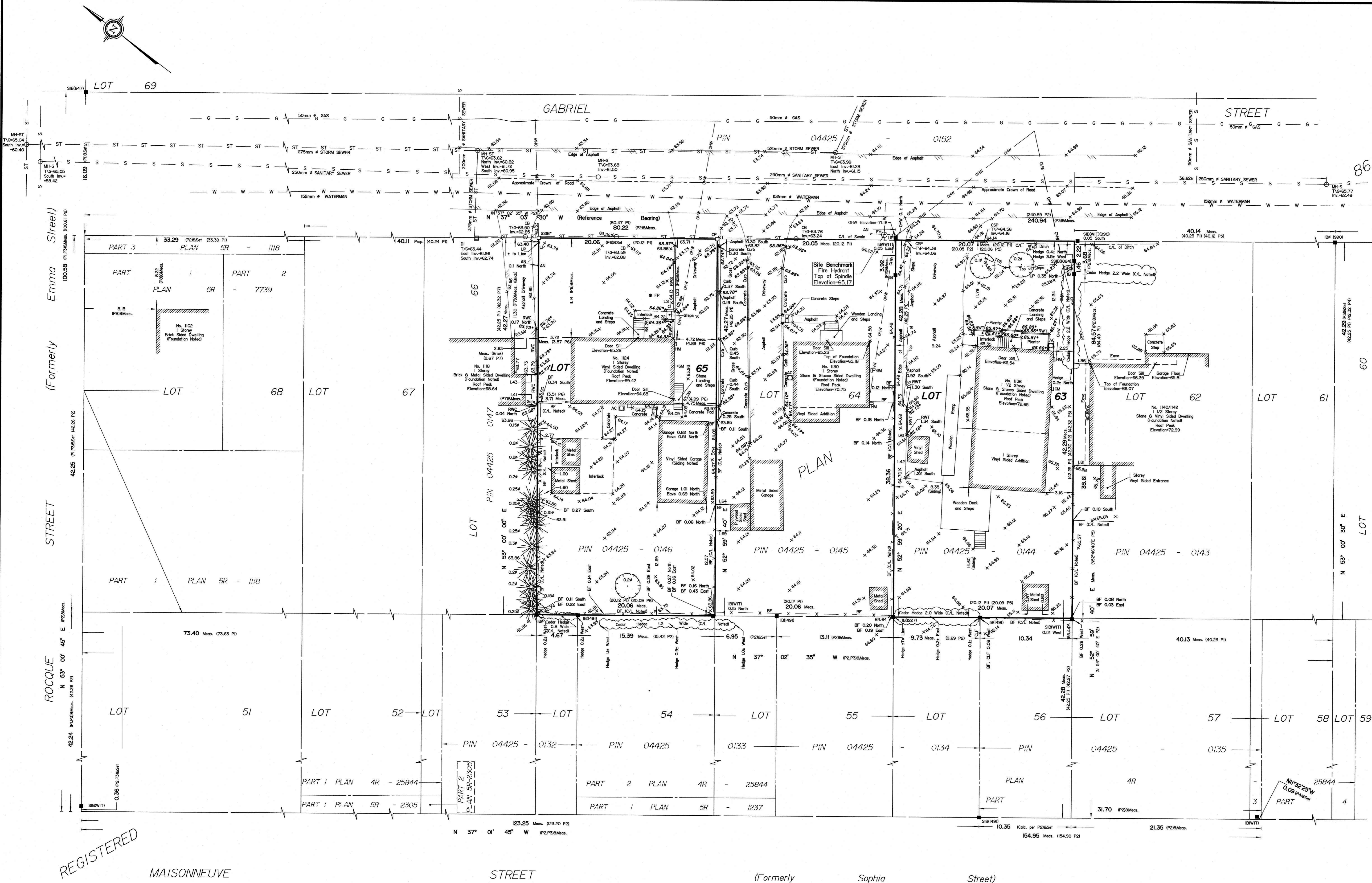
**UTILITY NOTES**

- This drawing cannot be accepted as acknowledging all of the utilities and it will be the responsibility of the user to contact the respective utility authorities for confirmation.
- Only visible surface utilities were located.
- Underground utility information compiled from City of Ottawa utility sheet reference C-31-18, C-32-13, C-32-19, drawing No. 99-108-1 and drawing No. 980802-P1.
- Sanitary and storm sewer grades and inverts were compiled from field measurements and city of Ottawa utility sheets.

LOT 63 Site Area = 848.8 sq.m.  
 LOT 65 Site Area = 847.8 sq.m.

Bearings are grid, derived from Can-Net 2016 Real Time Network GPS observations and are referenced to Specified Control Points 01919690184 and 019198434761, MTM Zone 9 (76°30' West Longitude) NAD-83 (original).

For bearing comparisons, a rotation of 0°00'55" clockwise was applied to bearings on plan P2, and a rotation of 0°02'10" clockwise was applied to bearings on plan P5.



THIS PLAN IS NOT VALID UNLESS IT IS AN EMBOSSED ORIGINAL COPY ISSUED BY THE SURVEYOR in accordance with Regulation 1026, Section 29 (3).