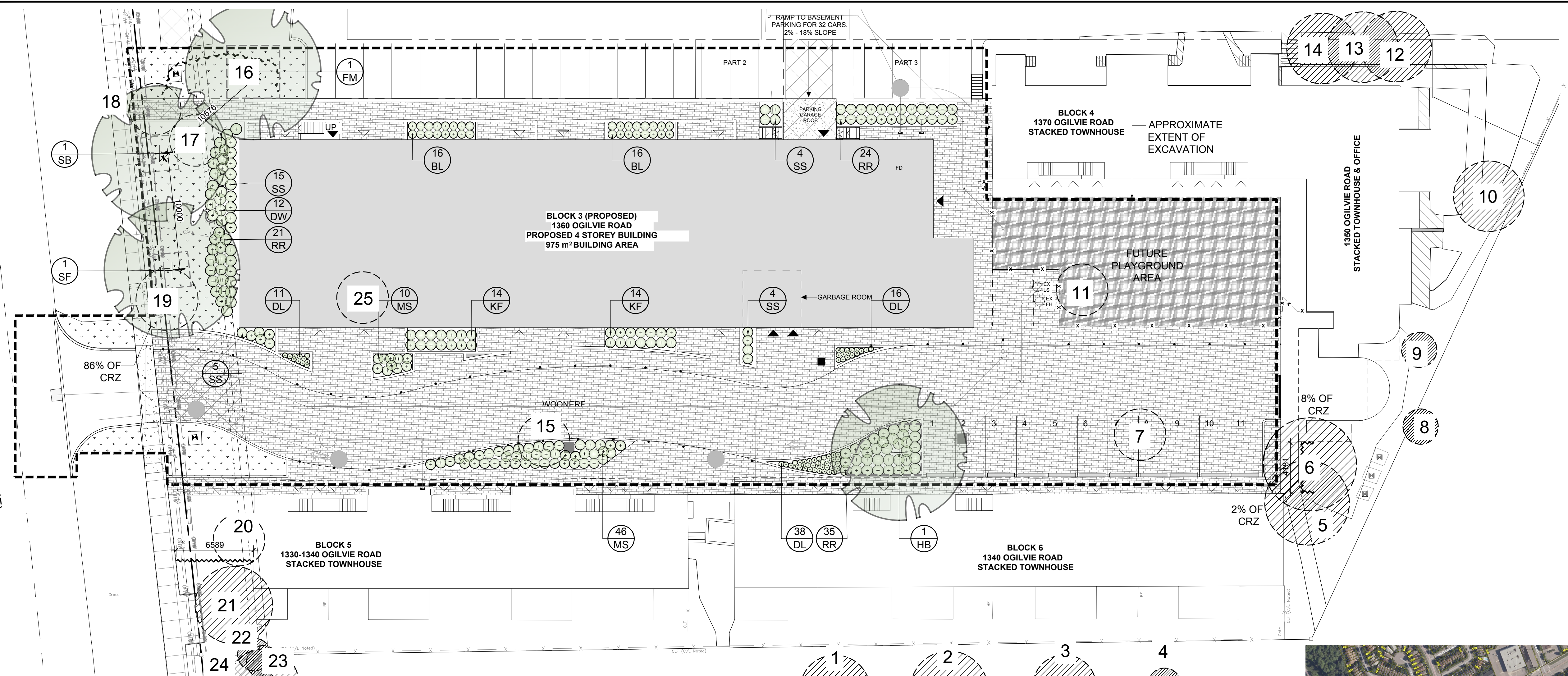


(TYPICAL FRONT)

OGILVIE ROAD (EAST BOUND LANE)



BETTER LIVING CO-OPERATIVE
OTTAWA, ONTARIO, CANADA

CONSULTANTS
ARCHITECTS: **CSV ARCHITECTS**
sustainable design - conception écologique
413.866.8118 190 O'Connor Street, Suite 100
Ottawa, Ontario K2P 0P3

CIVIL ENGINEERS: **McINTOSH PERRY**

SURVEYORS: ANNIS, O'SULLIVAN, VOLLEBECK LTD.
14 Glenview Court, Suite 807
Ottawa, Ont. K2E 7S8
Phone: (613) 727-0800 Fax: (613) 727-0779
www.anniso.com

LEGEND

- EXISTING TREE TO REMAIN
- GROUP OF EXISTING TREES TO BE REMOVED
- EXISTING TREE TO BE REMOVED
- PROPOSED DECIDUOUS TREE
- REQUIRED SOIL VOLUME
- PROPOSED SHRUBS / PERENNIALS
- PROPOSED SOD
- PROPOSED PRECAST CONCRETE PAVERS
- PROPOSED ENGINEERED WOOD FIBRE
- TREE PROTECTION FENCE
- EXISTING LIGHT STANDARD
- EXISTING FIRE HYDRANT
- EXISTING TRANSFORMER
- EMERGENCY ENTRANCE / SERVICE DOORS
- MAIN ENTRANCE

1 TREE CONSERVATION REPORT & LANDSCAPE PLAN
SCALE: 1:200

EXISTING TREE LIST

KEY	QTY	BOTANICAL NAME	COMMON NAME	SIZE	CONDITION	REMARKS	OWNERSHIP	COMMENTS
1	1	<i>Acer saccharum</i>	Sugar Maple	300mm DBH	GOOD	To remain	City of Ottawa	100% canopy
2	1	<i>Acer saccharum</i>	Sugar Maple	330mm DBH	GOOD	To remain	City of Ottawa	100% canopy
3	1	<i>Acer saccharum</i>	Eastern White Cedar	150-200mm DBH	GOOD	To remain	City of Ottawa	100% canopy
4	1	<i>Quercus rubra</i>	Red Oak	140mm DBH	GOOD	To remain	City of Ottawa	100% canopy
5	1	<i>Quercus rubra</i>	Red Oak	360mm DBH	GOOD	To remain	1360 Ogilvie	100% canopy
6	1	<i>Quercus rubra</i>	Red Oak	400mm DBH	GOOD	To remain	1360 Ogilvie	100% canopy
7	1	<i>Gleditsia triacanthos</i>	Honey Locust	190mm DBH	GOOD	To be removed	1360 Ogilvie	100% canopy
8	1	<i>Acer negundo</i>	Manitoba Maple	140-170mm DBH	GOOD	To remain	1360 Ogilvie	100% canopy
9	1	<i>Acer ginnata</i>	Amur Maple	6x150mm DBH	GOOD	To remain	1360 Ogilvie	100% canopy
10	1	<i>Malus spp.</i>	Crabapple	300mm DBH	GOOD	To remain	1360 Ogilvie	100% canopy
11	1	<i>Gleditsia triacanthos</i>	Honey Locust	500mm DBH	GOOD	To be removed	1360 Ogilvie	100% canopy
12	1	<i>Malus spp.</i>	Crabapple	300mm DBH	GOOD	To remain	1360 Ogilvie	100% canopy
13	1	<i>Malus spp.</i>	Crabapple	310mm DBH	GOOD	To remain	1360 Ogilvie	100% canopy
14	1	<i>Malus spp.</i>	Crabapple	320mm DBH	GOOD	To remain	1360 Ogilvie	100% canopy
15	1	<i>Gleditsia triacanthos</i>	Honey Locust	220mm DBH	GOOD	To be removed	1360 Ogilvie	100% canopy
16	*	<i>Acer negundo</i>	Manitoba Maple	100-200mm DBH	GOOD	To be removed	1360 Ogilvie	100% canopy
17	*	<i>Ulmus americana</i>	American Elm	110-150mm DBH	GOOD	To be removed	1360 Ogilvie	100% canopy
18	1	<i>Acer platanoides</i>	Norway Maple	400mm DBH	GOOD	To be removed	1360 Ogilvie	100% canopy
19	1	<i>Acer platanoides</i>	Norway Maple	300mm DBH	POOR	To be removed	1360 Ogilvie	40% canopy
20	1	<i>Quercus rubra</i>	Red Oak	260mm DBH	FAIR	To be removed	1360 Ogilvie / City	80% canopy
21	1	<i>Acer platanoides</i>	Norway Maple	470mm DBH	FAIR	To remain	1360 Ogilvie	Better living has received a permit to remove this tree
22	1	<i>Pinus nigra</i>	Austrian Pine	320mm DBH	GOOD	To remain	1360 Ogilvie	100% canopy
23	1	<i>Acer platanoides</i>	Norway Maple	100mm DBH	GOOD	To remain	1360 Ogilvie / City	100% canopy
24	1	<i>Acer platanoides</i>	Norway Maple	100mm DBH	GOOD	To remain	City of Ottawa	100% canopy
25	1	<i>Gleditsia triacanthos</i>	Honey Locust	250mm DBH	GOOD	To be removed	1360 Ogilvie	100% canopy

*Denotes numerous

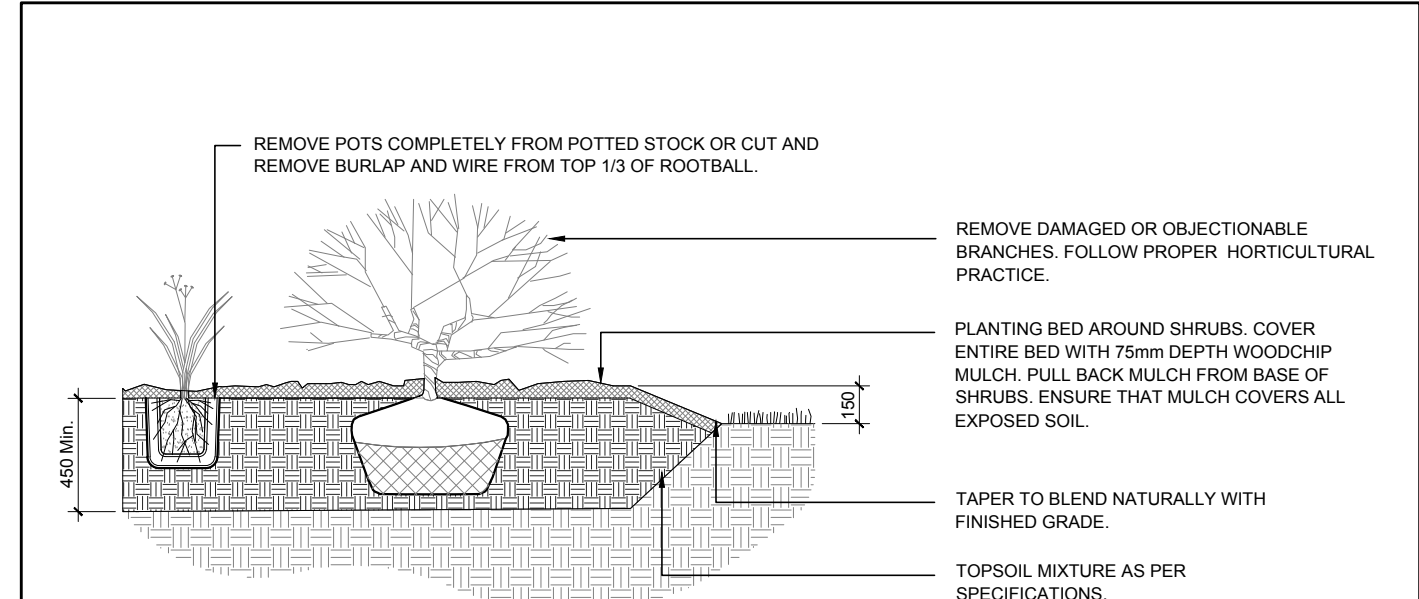
40 YEAR CANOPY CALCULATION:

-3407m2 area of work
-2 Large deciduous trees proposed (154m2 ea.), and 2 small deciduous trees proposed (7m2 ea.)
=322m2 canopy cover =9.5% canopy cover
*Large deciduous tree calculated at 14m spread, small deciduous trees at 7m spread

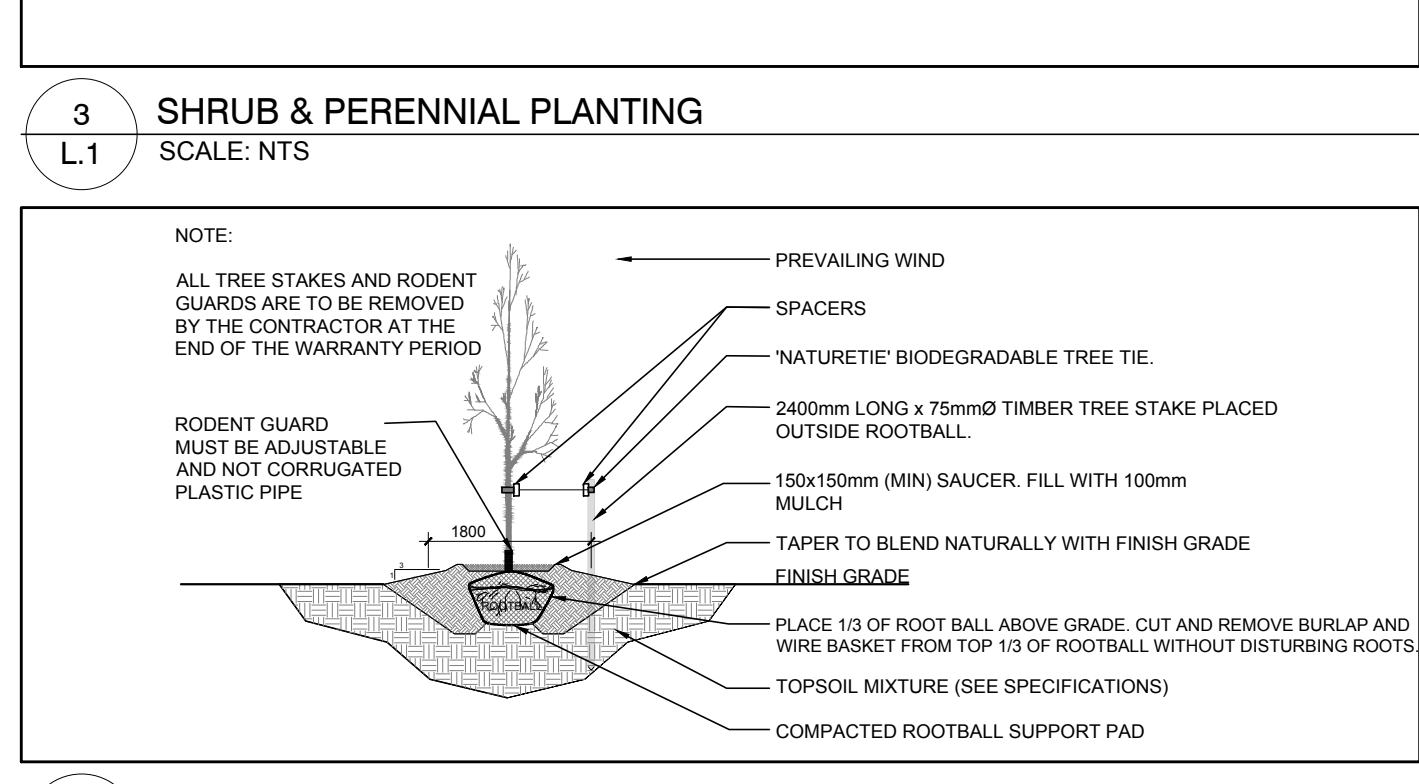


PROPOSED PLANT LIST

KEY	QTY	BOTANICAL NAME	COMMON NAME	SIZE	CONDITION	REMARKS	NATIVE SPECIES
TREES							
FM	1	<i>Acer x freemanii</i>	Freeman's Maple	50mm cal.	B&B		YES
HB	1	<i>Celtis occidentalis</i>	Hackberry	50mm cal.	B&B		YES
SB	1	<i>Amelanchier canadensis</i>	Serviceberry	50mm cal.	B&B		YES
SF	1	<i>Amelanchier laevis 'JFS-ARB'</i>	Spring Flurry Serviceberry	50mm cal.	B&B		YES
SHRUBS							
DW	12	<i>Cornus sericea</i>	Red Osier Dogwood	800 mm ht.	Potted	1200 mm o.c.	YES
RR	80	<i>Rosa rugosa</i>	Rugosa Rose	800 mm ht.	Potted	1200 mm o.c.	NO
SS	28	<i>Sorbaria sorbifolia 'Sem'</i>	Sem False Spirea	600mm ht.	Potted	1000 mm o.c.	NO
PERENNIALS AND ORNAMENTAL GRASSES							
BL	32	<i>Leymus arenarius 'Blue Dune'</i>	Blue Dune Grass	250mm pot	Potted	800 mm o.c.	NO
DL	65	<i>Hemerocallis 'Stella D'Oro'</i>	Stella D'Oro Daylily	100mm pot	Potted	800 mm o.c.	NO
KF	28	<i>Calamagrostis 'Karl Foerster'</i>	Karl Foerster Grass	250mm pot	Potted	800 mm o.c.	NO
MS	56	<i>Miscanthus sinensis 'Strictus'</i>	Porcupine Grass	250mm pot	Potted	800 mm o.c.	NO

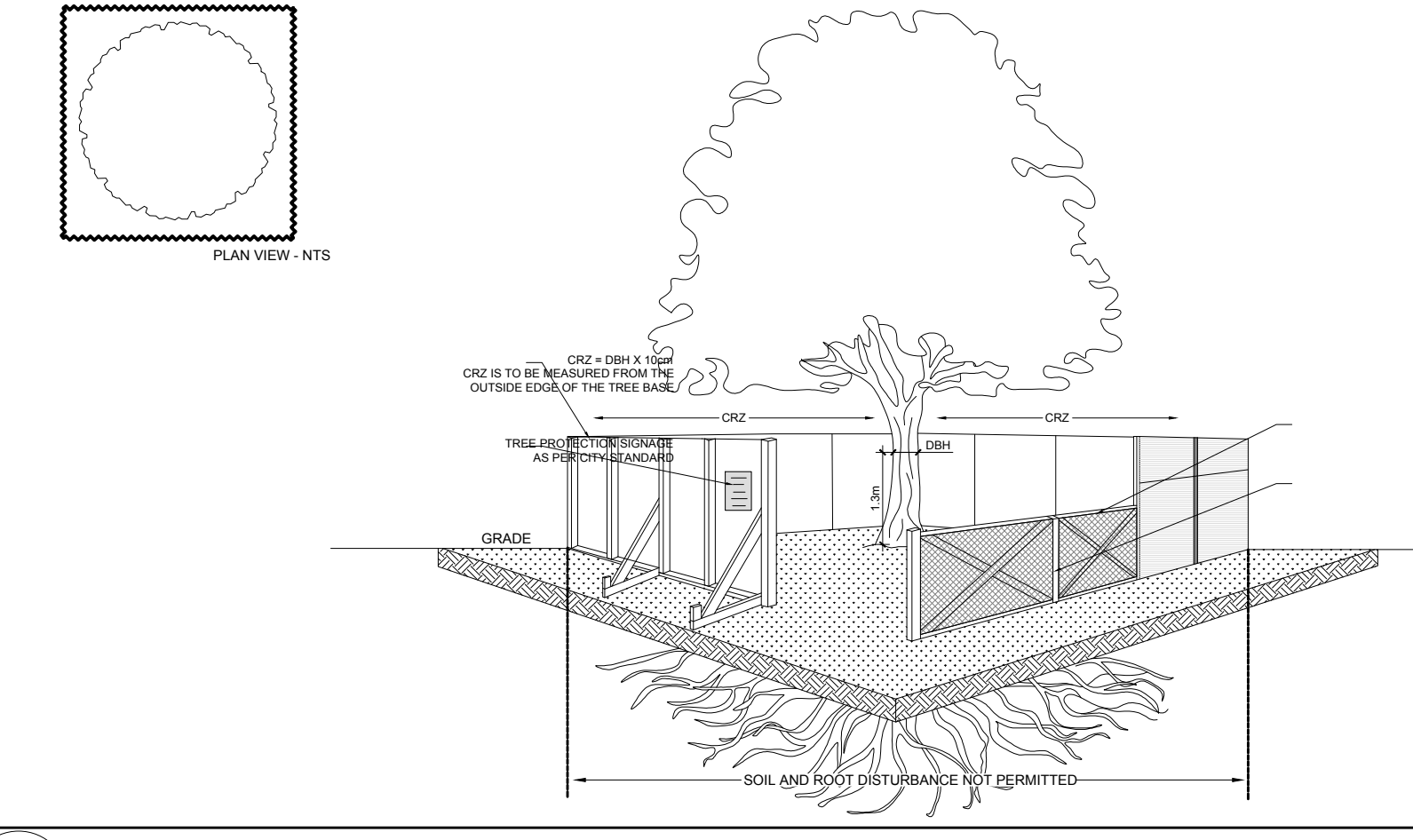


3 SHRUB & PERENNIAL PLANTING
SCALE: NTS



4 DECIDUOUS TREE PLANTING
SCALE: NTS

- GENERAL NOTES:**
- IT IS THE RESPONSIBILITY OF THE APPROPRIATE CONTRACTOR OR OFFICIAL TO REPORT ANY ERRORS, OMISSIONS OR DISCREPANCIES ON THIS PLAN WITH ACTUAL SITE CONDITIONS TO THE LANDSCAPE ARCHITECT BEFORE PROCEEDING WITH CONSTRUCTION.
 - THE CONTRACTOR IS TO NOTIFY ALL UTILITY COMPANIES AND AUTHORITIES PRIOR TO ANY EXCAVATION AND ASCERTAIN LOCATIONS OF UNDERGROUND SERVICES.
 - THE CONTRACTOR IS TO REINSTATE ALL AREAS AND ITEMS DAMAGED AS A RESULT OF CONSTRUCTION ACTIVITY.
 - THE CONTRACTOR IS TO COMPLY WITH ALL PERTINENT CODES AND BY-LAWS.
 - THE CONTRACTOR IS TO MAINTAIN A POSITIVE SURFACE RUN-OFF THROUGHOUT THE ENTIRE CONSTRUCTION PERIOD.
 - THE LANDSCAPE ARCHITECT IS NOT RESPONSIBLE FOR SUBSURFACE CONDITIONS.
 - THE CONTRACTOR IS TO IDENTIFY ALL EXISTING TREES TO REMAIN ON SITE WITH THE LANDSCAPE ARCHITECT PRIOR TO CONSTRUCTION.
 - THE CONTRACTOR IS TO STAKE THE PROPOSED LOCATION OF ALL PLANT MATERIAL IN CONJUNCTION WITH THE LANDSCAPE ARCHITECT PRIOR TO EXCAVATION.
 - MINIMUM DISTANCES FOR SELECTED DECIDUOUS TREES ARE AS FOLLOWS:
 - BUILDING FOUNDATIONS - 7.5M
 - SIDEWALKS - 1.5M
 - PUBLIC STREETS - 2.5M
 - UNDERGROUND INFRASTRUCTURE - 2.0M
 - ALL TREES WITHIN 1M OF UNDERGROUND UTILITY TRENCHES ARE TO BE EXCAVATED BY HAND.
 - REMOVE ALL PROTECTIVE WRAPPING FROM TREE TRUNKS AFTER INSTALLATION.
 - STAKING OF TREES SHALL ONLY BE PERFORMED IF NECESSARY.
 - ENSURE THAT MULCH IS PULLED BACK A MINIMUM DISTANCE OF 75MM FROM BASE OF TREE TRUNK.



- TREE PROTECTION REQUIREMENTS:**
- PRIOR TO ANY WORK ACTIVITY WITHIN THE CRITICAL ROOT ZONE (CRZ = 10x DIAMETER) OF A TREE PROTECTION FENCING MUST BE INSTALLED SURROUNDING THE CRITICAL ROOT ZONE AND REMAIN UNTIL THE WORK IS COMPLETE.
 - DO NOT PLACE ANY MATERIAL OR EQUIPMENT INCLUDING OUTHOUSES.
 - DO NOT ATTACH ANY SIGNS, NOTICES OR POSTERS TO ANY TREE.
 - DO NOT RAISE OR LOWER THE EXISTING GRADE.
 - TUNNEL OR BORE WHEN CHANGING.
 - DO NOT DAMAGE THE ROOT SYSTEM, TRUNK, OR BRANCHES OR ANY TREE.
 - ENSURE THAT EXHAUST FUMES FROM ALL EQUIPMENT ARE NOT DIRECTED TOWARD ANY TREE.
 - DO NOT EXTEND HARD SURFACE OR SIGNIFICANTLY CHANGE LANDSCAPING.
 - UNLESS PLANS ARE APPROVED BY CITY FORESTRY STAFF, FOR WORK WITHIN THE CRZ:
 - DO NOT PLACE ANY MATERIAL OR EQUIPMENT INCLUDING OUTHOUSES.
 - DO NOT ATTACH ANY SIGNS, NOTICES OR POSTERS TO ANY TREE.
 - DO NOT RAISE OR LOWER THE EXISTING GRADE.
 - TUNNEL OR BORE WHEN CHANGING.
 - DO NOT DAMAGE THE ROOT SYSTEM, TRUNK, OR BRANCHES OR ANY TREE.
 - ENSURE THAT EXHAUST FUMES FROM ALL EQUIPMENT ARE NOT DIRECTED TOWARD ANY TREE.
 - DO NOT EXTEND HARD SURFACE OR SIGNIFICANTLY CHANGE LANDSCAPING.
 - THE LOCATION OF THE TREE PROTECTION FENCING MUST BE DETERMINED BY AN ARBORIST AND OR AN ASSOCIATED PLAN FOR THE SITE (E.G. TREE CONSERVATION REPORT, TREE DISCLOSURE ETC). THE PLAN AND CONSTRUCTED FENCING MUST BE APPROVED BY CITY FORESTRY STAFF PRIOR COMMENCEMENT OF WORK.
 - IF THE PROTECTED TREE PROTECTION AREA MUST BE REDUCED TO FACILITATE CONSTRUCTION, MEASURES MUST BE PRESCRIBED BY AN ARBORIST AND APPROVED BY CITY FORESTRY STAFF. THESE INCLUDE THE PLACEMENT OF PLYWOOD, WOOD CHIPS OR STEEL PLATING OVER THE ROOTS FOR PROTECTION OF THE TREE'S PRINCIPAL AND CARE OF ROOTS WHERE ENCOUNTERED.
- BY LAWS:**
ALL CITY-OWNED TREES ARE PROTECTED UNDER THE MUNICIPAL TREES AND NATURAL AREAS PROTECTION BY-LAW (2006-279), WITHIN THE URBAN AREA.
PRIVATELY-OWNED TREES GREATER THAN 50mm IN DIAMETER ON LOTS 1 HECTARE IN SIZE OR LESS, AND TREES GREATER THAN 100mm IN DIAMETER ON LOTS GREATER THAN 1 HECTARE, ARE PROTECTED UNDER THE URBAN TREE CONSERVATION BY-LAW (2009-200).

2 TREE PROTECTION FENCE
SCALE: NTS

No.	Issue	Date	DR	CK
4	REVISED PER CITY COMMENTS	07/05/2024	ML	JL
3	ISSUED FOR SITE PLAN CONTROL	06/14/2024	ML	JL
2	ISSUED FOR 33% REVIEW	12/01/2023	ML	JL
1	ISSUED FOR DISCUSSION AND REVIEW	11/01/2023	ML	JL

JAMES B. LENNOX & ASSOCIATES INC.
LANDSCAPE ARCHITECTS
3332 CARLING AVE. OTTAWA, ONTARIO K2H 5A8
Tel. (613) 722-5168 Fax. (866) 343-3942

PROJECT
BLOCK 3 REDEVELOPMENT
1360 OGILVIE ROAD, OTTAWA ON

DRAWING
TREE CONSERVATION REPORT & LANDSCAPE PLAN

STAMP: ASSOCIATION OF LANDSCAPE ARCHITECTS OF ONTARIO

SCALE: AS SHOWN

START DATE: OCTOBER 2023

PROJECT NO.: 23CSV2318

PROJECT NORTH

DRAWING NO.: **L.1**

PLOT SIZE ARCH-D