

Tree Conservation Report

3095 Palladium Drive

City of Ottawa

Prepared For:

3095 Palladium GP Inc.

3080 Young Street, Suite 6060, Toronto, ON M4N 3N1

Prepared By:

CSW Landscape Architects Limited
319 McRae Avenue, Suite 502, Ottawa, ON K1Z 0B9

Prepared – June 19, 2023

Revision 1 – October 13, 2023

Information

Project Name: 3095 Palladium Drive

Owner: 3095 Palladium GP Inc.
3080 Young Street, Suite 6060, Toronto, ON M4N 3N1
T: 416-662-1110
E: BarryG@quaestus.ca

Prepared by: Sheri Edwards, OALA, CSLA
CSW Landscape Architects Limited
T: 613-729-4536 x 228
E: edwards@csw.ca

Municipal Address: 3095 Palladium Drive, Stittsville, ON, K2T 0N2

Legal Description: Block 14 on Registered Plan 4M-1566. Concession 1, Part of Lot 3, Geographic Township of Huntley, City of Ottawa.

Contractor: Unknown at this time.

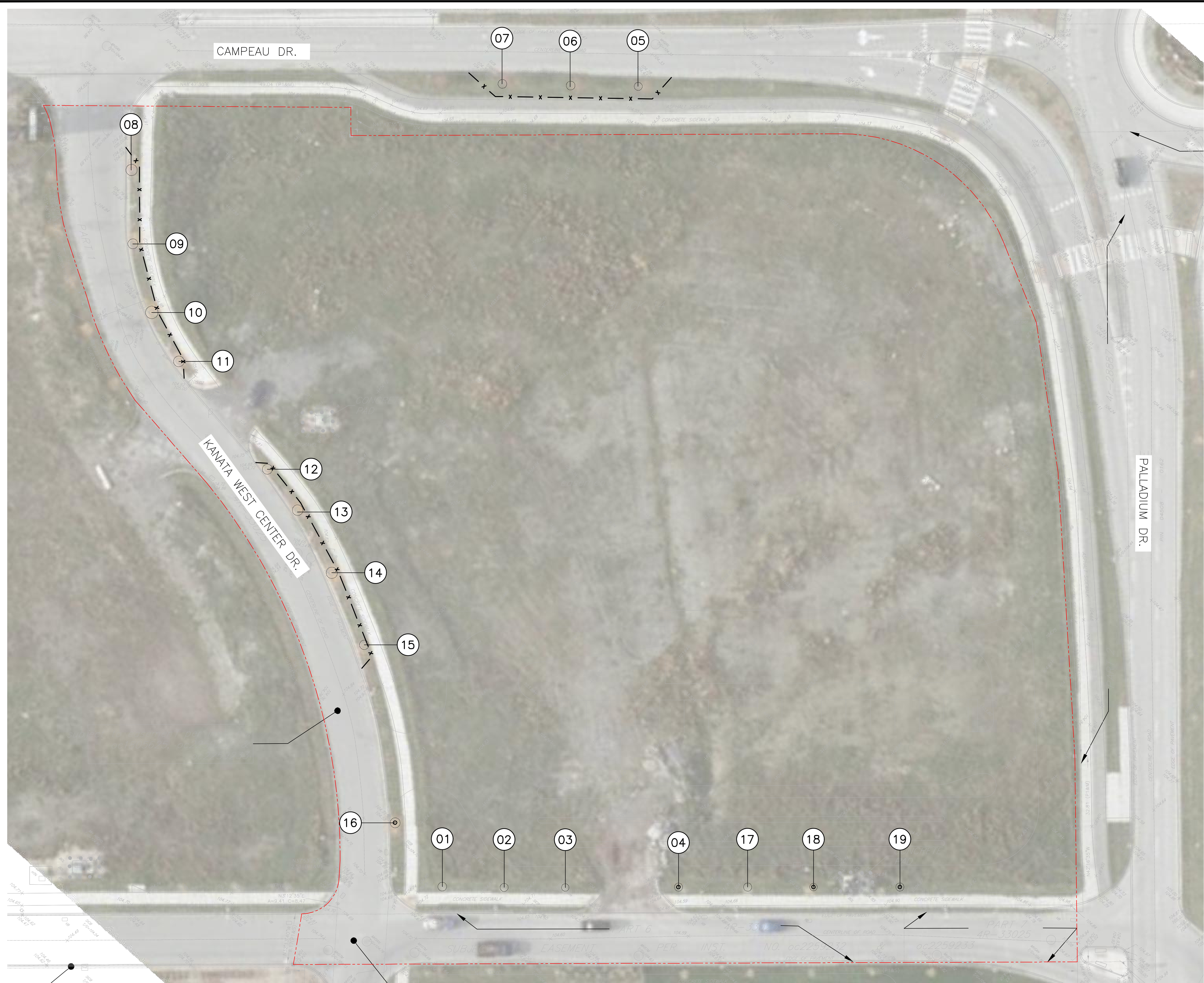
Schedule of Proposed works: 2023 – 2024

Other Applications Affecting the Subject Lands: None

Included in this report:

Map 1: Current Vegetation

Map 2: Proposed Development and Conserved Vegetation



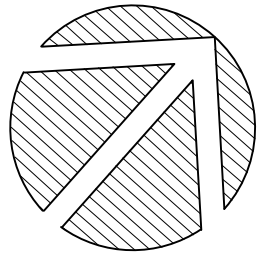
MAP #1 - CURRENT VEGETATION




Key Plan

- LEGEND
- ① TREE IDENTIFICATION NUMBER
 - EXTENT OF CRITICAL ROOT ZONE
 - ⊙ EXISTING TREE WITH TRUNK LOCATION

No.	Revision	Date
3	RE-ISSUED FOR SPC	13 OCT 2023
2	ISSUED FOR SPC	19 JUN 2023
1	ISSUED FOR COORDINATION	07 JUN 2023

North: 

Stamp: 

CSW Landscape Architecture
 Urban Design
 Site Planning
 Recreation and Park Planning
 Project Management

319 McRae Avenue, Suite 502, Ottawa, Ontario, K1Z 0B9
 Tel: (613) 729-4536

- All measurements in millimeters unless specified otherwise. Do not scale drawing. All drawings to be read in conjunction with written specifications.
- Copyright reserved. This drawing is the exclusive property of CSW Landscape Architects Ltd. and shall not be used without the consent thereof.
- This Drawing may not be used for construction until signed by the landscape architect. It is the responsibility of the contractor to:
 - check and verify all dimensions on site;
 - report all errors and/or omissions to the landscape architect;
 - comply with all pertinent codes and by-laws;
 - check and verify locations of all underground services with all local utilities prior to any digging.

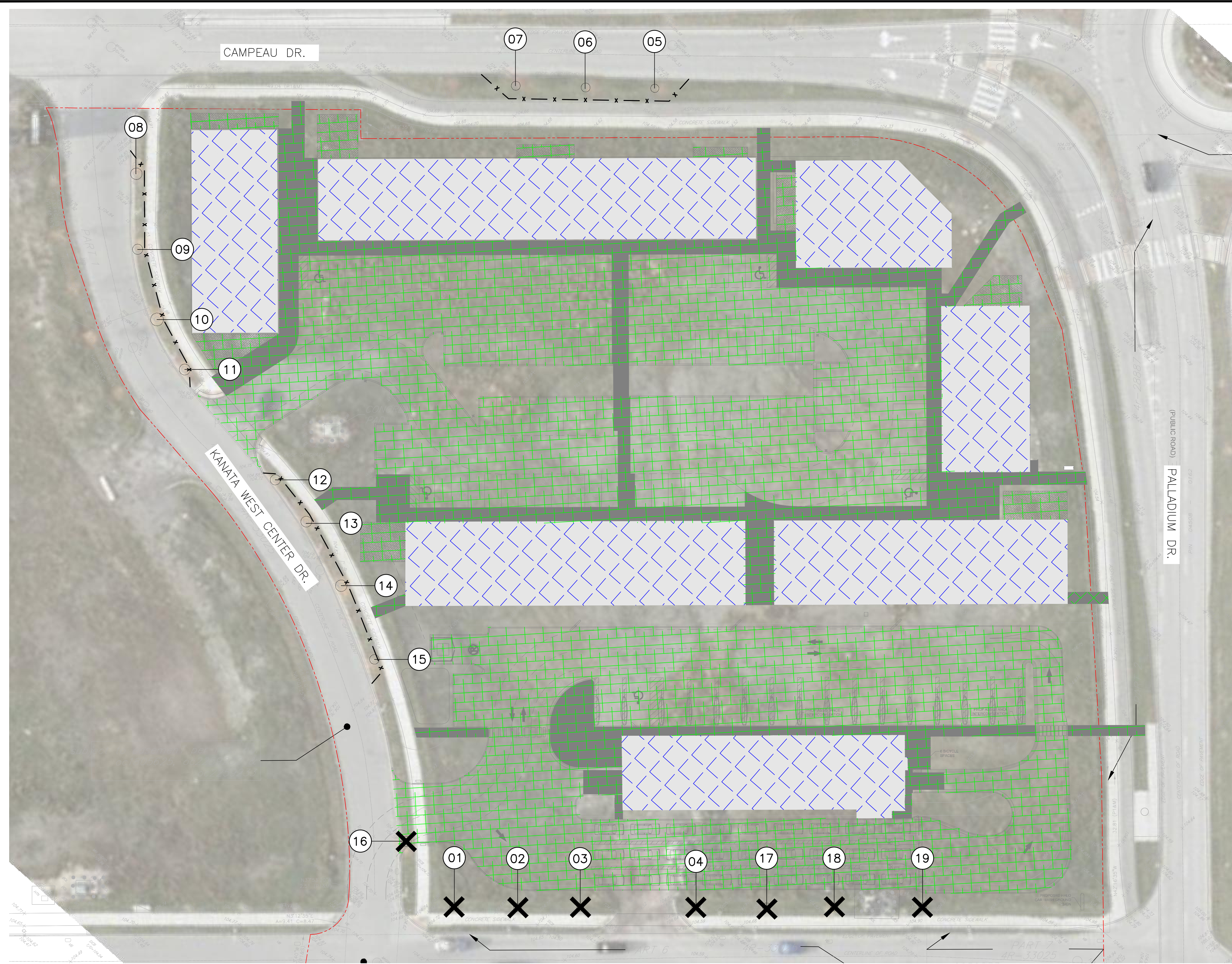
Project:
3095 Palladium Dr

OTTAWA., ONTARIO

Drawing:
Tree Conservation Report

Scale: 1:300	Date: 25 APR, 2023
Design By: AB	Drawn By: SC
Project Number:	Sheet Number: TCR1.1

Last Save: 2023-10-13 12:12:28 PM
 File Location: Z:\Projects\2163-01_3095 Palladium\Drawings\TCR - Copy\2163-01_3095 Palladium_TCR02.dwg



NOTES:

1. THIS TREE CONSERVATION REPORT HAS BEEN PREPARED AS PART OF A SITE PLAN CONTROL APPLICATION FOR THE RE-DEVELOPMENT OF THE INDICATED SITE.
2. THE EXISTING SITE CONTAINS NO NOTABLE FEATURES APART FROM TWO CONCRETE PADS WITH TRANSFORMERS AND GRAVEL DRIVEWAYS AS SITE ACCESS.
 - 2.1. APPROXIMATELY 3817m² IS OCCUPIED BY BUILDING FOOTPRINTS.
 - 2.2. APPROXIMATELY 7737m² IS HARD SURFACES.
3. THERE ARE A TOTAL OF NINETEEN (19) EXISTING TREES INCLUDED IN THE TREE CONSERVATION REPORT, IN VARYING CONDITIONS. TREES ARE LOCATED WITHIN THE SITE BOUNDARY AND WITHIN THE CITY RIGHT-OF-WAY.
4. THE PROPOSED DEVELOPMENT REQUIRES THE REMOVAL OF 8 TREES
5. THE DEVELOPMENT SITE IS NOT CONSIDERED OF PRIMARY OR SUPPORTING SIGNIFICANCE AS NATURAL LANDS IN THE GREENSPACE MASTER PLAN

MAP #2 – PROPOSED DEVELOPMENT AND CONSERVED VEGETATION



Key Plan

- LEGEND**
- PROPOSED BUILDING FOOTPRINT
 - PROPOSED HARD SURFACES
 - TREE IDENTIFICATION NUMBER
 - EXTENT OF CRITICAL ROOT ZONE
 - EXISTING TREE WITH TRUNK LOCATION
 - EXISTING TREE TO BE REMOVED
 - TREE PROTECTION FENCE
- REFER TO LANDSCAPE PLAN FOR PROPOSED TREE PLANTING (PREPARED BY OTHERS)

No.	Revision	Date
3	RE-ISSUED FOR SPC	13 OCT 2023
2	ISSUED FOR SPC	19 JUN 2023
1	ISSUED FOR COORDINATION	07 JUN 2023

North:

Stamp:

CSW Landscape Architecture
 Urban Design
 Site Planning
 Recreation and Park Planning
 Project Management

319 McRae Avenue, Suite 502, Ottawa, Ontario, K1Z 0B9
 Tel: (613) 729-4536

1. All measurements in millimeters unless specified otherwise. Do not scale drawing. All drawings to be read in conjunction with written specifications.
2. Copyright reserved. This drawing is the exclusive property of CSW Landscape Architects Ltd. and shall not be used without the consent thereof.
3. This Drawing may not be used for construction until signed by the landscape architect. It is the responsibility of the contractor to:
 - check and verify all dimensions on site;
 - report all errors and/or omissions to the landscape architect;
 - comply with all pertinent codes and by-laws;
 - check and verify locations of all underground services with all local utilities prior to any digging.

Project:
3095 Palladium Dr

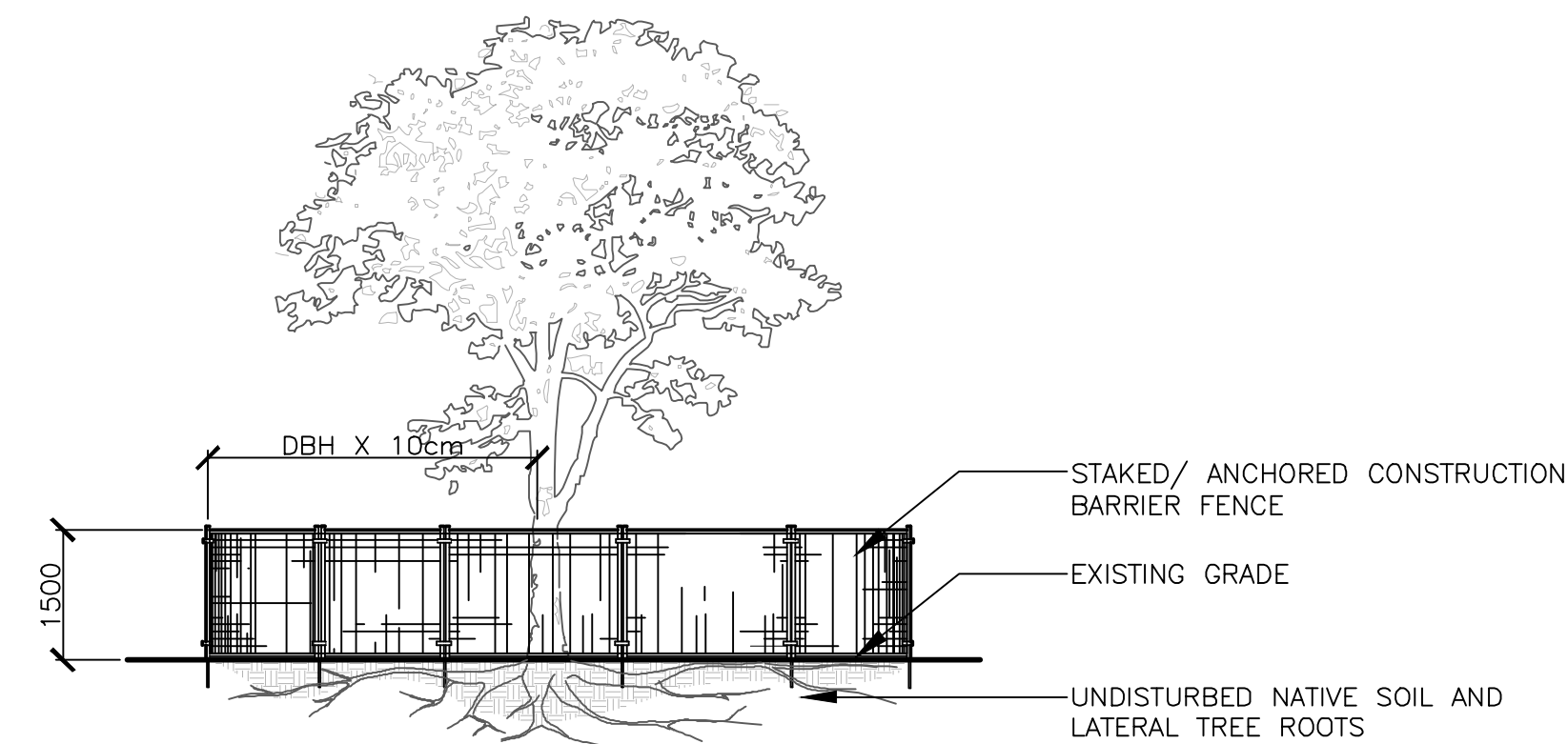
OTTAWA., ONTARIO

Drawing:
Tree Conservation Report

Scale:	1:300	Date:	25 APR, 2023
Design By:	AB	Drawn By:	SC
Project Number:		Sheet Number:	TCR1.2

Last Save: 2023-10-13 12:12:28 PM
 File Location: Z:\Projects\2163-01_3095 Palladium\Drawings\TCR - Copy\2163-01_3095 Palladium_TCR02.dwg

Tree #	Botanical Name	Common Name	DBH (cm)	Ownership	Condition	Comments	Arborist Recommendation	Removal Reason
1	Celtis occidentalis	Hackberry	7	Private	Poor	Canopy Die back~ 40%.	REMOVE	Construction
2	Celtis occidentalis	Hackberry	6.5	Private	Poor	Canopy Die back~ 40%.	REMOVE	Construction
3	Celtis occidentalis	Hackberry	6	Private	Poor	Canopy Die back~ 80%.	REMOVE	Construction
4	Celtis occidentalis	Hackberry	6.5	Private	Poor	Canopy Die back~ 80%.	REMOVE	Construction
5	Prunus virginiana "schubert"	Schubert Chokecherry	6.5	City	Good	Canopy Die back~ 5%. Decay at trunk	Remain	
6	Prunus virginiana "schubert"	Schubert Chokecherry	7	City	Moderate	Canopy Die back~ 5%. Leaning- Not corrected	Remain	
7	Prunus virginiana "schubert"	Schubert Chokecherry	7	City	Good	Canopy Die back~ 5%.	Remain	
8	Gladitsia triacanthos var. imermis	Honey Locust	9	Private	Good		Remain	
9	Gladitsia triacanthos var. imermis	Honey Locust	8	Private	Good		Remain	
10	Gladitsia triacanthos var. imermis	Honey Locust	10	Private	Good		Remain	
11	Gladitsia triacanthos var. imermis	Honey Locust	8.5	Private	Good		Remain	
12	Gladitsia triacanthos var. imermis	Honey Locust	8	Private	Good		Remain	
13	Gladitsia triacanthos var. imermis	Honey Locust	8.5	Private	Good		Remain	
14	Gladitsia triacanthos var. imermis	Honey Locust	9	Private	Good		Remain	
15	Gladitsia triacanthos var. imermis	Honey Locust	7.5	Private	Good		Remain	
16	Gladitsia triacanthos var. imermis	Honey Locust	8	Private	Good		REMOVE	Construction
17	Celtis occidentalis	Hackberry	6.5	Private	Poor	Canopy Die back~ 80%.	REMOVE	Construction
18	Celtis occidentalis	Hackberry	6	Private	Poor	Canopy Die back~ 80%.	REMOVE	Construction
19	Celtis occidentalis	Hackberry	6.5	Private	Poor	Canopy Die back~ 80%.	REMOVE	Construction



NOTES:

THE FOLLOWING PROTECTION MEASURES MUST BE IMPLEMENTED FOR RETAINED TREES, BOTH ON SITE AND ADJACENT SITES, PRIOR TO ANY TREE REMOVAL OR SITE WORKS AND MAINTAINED FOR THE DURATION OF CONSTRUCTION ON SITE.

1. UNDER THE GUIDANCE OF AN ARBORIST, ERECT A FENCE AT THE CRITICAL ROOT ZONE(CRZ) OF TREES WHERE THE CRZ IS ESTABLISHED AS BEING 10 CENTIMETERS FROM THE TRUNK FOR EVERY CENTIMETER OF TRUNK DIAMETER AT BREAST HEIGHT. THE CRZ IS CALCULATED AS DBH X 10cm.
2. DO NOT PLACE ANY MATERIAL OR EQUIPMENT WITHIN THE CRZ OF THE TREE
3. DO NOT ATTACH ANY SIGNS NOTICES OR POSTERS TO ANY TREE
4. DO NOT RAISE OR LOWER THE GRADE WITHIN THE CRZ WITHOUT APPROVAL
5. TUNNEL OR BORE WHEN DIGGING WITHIN THE CRZ OF A TREE
6. DO NOT DAMAGE THE ROOT SYSTEM, TRUNK, OR BRANCHES OR ANY TREE
7. ENSURE THAT EXHAUST FUMES FROM ALL EQUIPMENT ARE NOT DIRECTED TOWARDS ANY TREE CANOPY

Key Plan

No.	Revision	Date
3	RE-ISSUED FOR SPC	13 OCT 2023
2	ISSUED FOR SPC	19 JUN 2023
1	ISSUED FOR COORDINATION	07 JUN 2023

North:	Stamp:

CSW Landscape Architecture
Urban Design
Site Planning
Recreation and Park Planning
Project Management

319 McRae Avenue, Suite 502, Ottawa, Ontario, K1Z 0B9
Tel: (613) 729-4536

1. All measurements in millimeters unless specified otherwise. Do not scale drawing. All drawings to be read in conjunction with written specifications.
2. Copyright reserved. This drawing is the exclusive property of CSW Landscape Architects Ltd. and shall not be used without the consent thereof.
3. This Drawing may not be used for construction until signed by the landscape architect. It is the responsibility of the contractor to:
 - check and verify all dimensions on site;
 - report all errors and/or omissions to the landscape architect;
 - comply with all pertinent codes and by-laws;
 - check and verify locations of all underground services with all local utilities prior to any digging.

Project:
3095 Palladium Dr

OTTAWA., ONTARIO

Drawing:
Tree Conservation Report

Scale:	Date: 25 APR, 2023
Design By: AB	Drawn By: SC
Project Number:	Sheet Number: TCR1.3