

SKETCH SHOWING  
UNDERGROUND WATERMAIN AND HYDRO AT  
EASTERLY PORTION OF

100 STEACIE DRIVE  
CITY OF OTTAWA

Prepared by Annis, O'Sullivan, Vollebakk Ltd.  
October 8, 2019

Scale 1 : 400



Metric

DISTANCES SHOWN ON THIS PLAN ARE IN METRES AND  
CAN BE CONVERTED TO FEET BY DIVIDING BY 0.3048

Notes & Legend

Denotes	
○ UP	Utility Pole
— W —	Underground Water
— P —	Underground Hydro
○ FH	Fire Hydrant
⊙ W	Water Valve
○ MH-S	Maintenance Hole (Sanitary)

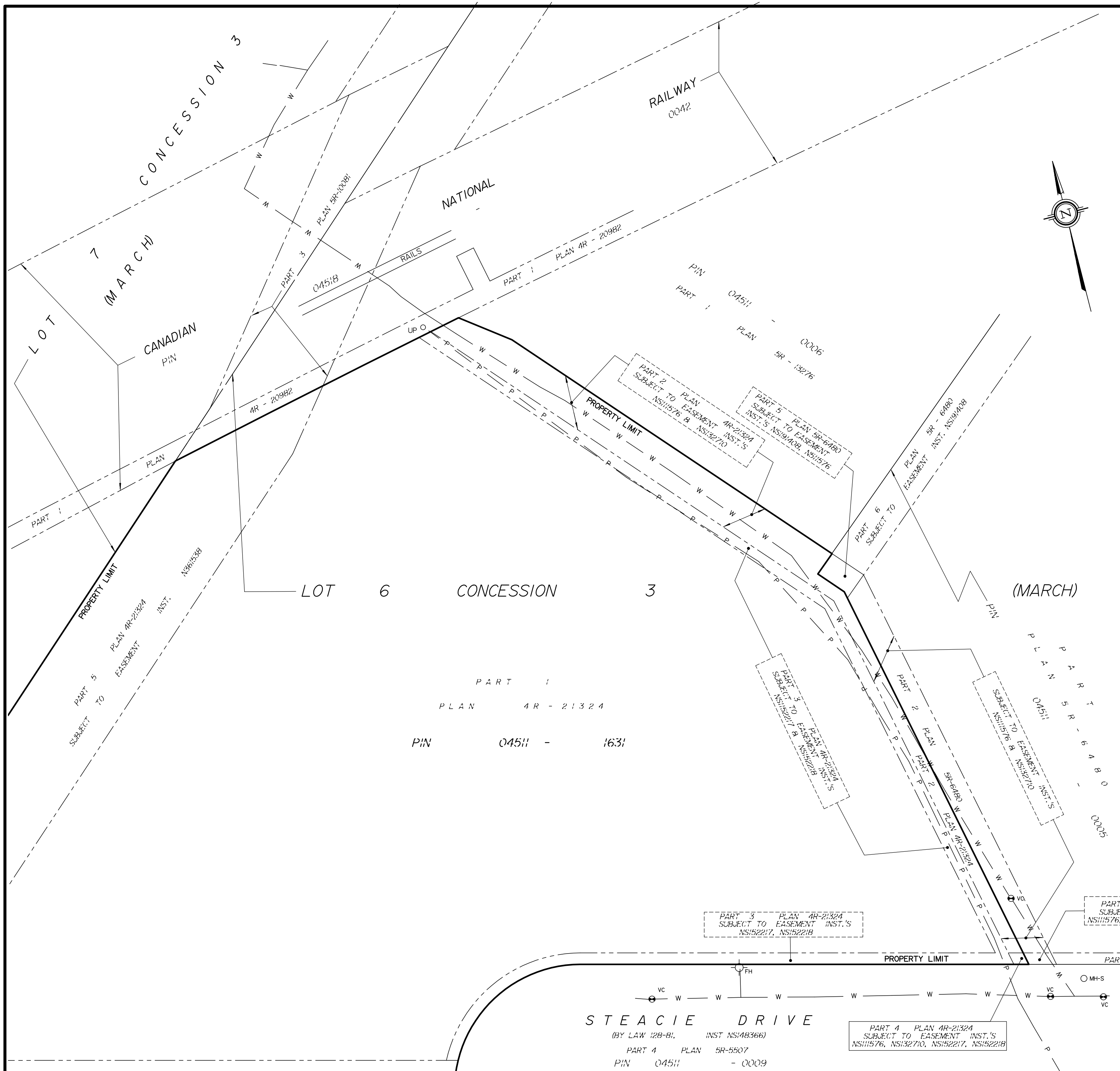
Caution

This is NOT a Plan of Survey and shall not be used  
except for the purpose indicated in the title block.

Boundary information compiled from Plan 4R-21324.

UTILITY NOTES

1. This drawing cannot be accepted as acknowledging all of the utilities and it will be the responsibility of the user to contact the respective utility authorities for confirmation.
2. Only visible surface utilities were located.
3. A field location of underground plant by the pertinent utility authority is mandatory before any work involving breaking ground, probing, excavating etc.
4. Underground Water & Underground Hydro utilities are show as marked on ground by T2 Utility Engineers Inc.



© Annis, O'Sullivan, Vollebakk Ltd. 2019. THIS PLAN IS PROTECTED BY COPYRIGHT™

**ANNIS, O'SULLIVAN, VOLLEBEKK LTD.**  
14 Concourse Gate, Suite 500  
Nepean, Ont. K2E 7S6  
Phone: (613) 727-0850 / Fax: (613) 727-1079  
Email: Nepean@aovltd.com

Ontario  
**Land Surveyors** Job No. I7723-19 Brigil P1L1 6 C 3 MA Sketch DI

STEACIE DRIVE  
(BY LAW 128-81, INST NS148366)  
PART 4 PLAN 5R-5507  
PIN 04511 - 0009

PART 4 PLAN 4R-21324  
SUBJECT TO EASEMENT INST.'S  
NS11576, NS132710, NS152217, NS152218

PART 3 PLAN 5R-6480  
SUBJECT TO EASEMENT INST.'S  
NS11576, NS132710, NS152217, NS152218

PART 3 PLAN 4R-21324  
SUBJECT TO EASEMENT INST.'S  
NS152217, NS152218

PLAN PART 5 R - 6480  
SUBJECT TO EASEMENT INST.'S  
NS11576, NS132710

PART 3 PLAN 4R-21324  
SUBJECT TO EASEMENT INST.'S  
NS152217, NS152218

PART 2 PLAN 4R-21324  
SUBJECT TO EASEMENT INST.'S  
NS11576, NS132710

PART 5 PLAN 5R-6480  
SUBJECT TO EASEMENT INST.'S  
NS11576, NS132710, NS152217, NS152218

PART 6 PLAN 5R-6480  
SUBJECT TO EASEMENT INST.'S  
NS11576, NS132710, NS152217, NS152218

PART 5 PLAN 4R-21324  
SUBJECT TO EASEMENT INST.'S  
NS11576, NS132710, NS152217, NS152218

PART 1 PLAN 4R-21324  
PIN 04511 - 1631

CANADIAN PIN

RAILWAY 0042

NATIONAL RAILS

LOT 7 (MARCH)

LOT 6 CONCESSION 3

(MARCH)

STEACIE DRIVE  
(BY LAW 128-81, INST NS148366)  
PART 4 PLAN 5R-5507  
PIN 04511 - 0009

PART 4 PLAN 4R-21324  
SUBJECT TO EASEMENT INST.'S  
NS11576, NS132710, NS152217, NS152218

PART 3 PLAN 5R-6480  
SUBJECT TO EASEMENT INST.'S  
NS11576, NS132710, NS152217, NS152218

PART 3 PLAN 4R-21324  
SUBJECT TO EASEMENT INST.'S  
NS152217, NS152218

PLAN PART 5 R - 6480  
SUBJECT TO EASEMENT INST.'S  
NS11576, NS132710

PART 3 PLAN 4R-21324  
SUBJECT TO EASEMENT INST.'S  
NS152217, NS152218

PART 2 PLAN 4R-21324  
SUBJECT TO EASEMENT INST.'S  
NS11576, NS132710

PART 5 PLAN 5R-6480  
SUBJECT TO EASEMENT INST.'S  
NS11576, NS132710, NS152217, NS152218

PART 6 PLAN 5R-6480  
SUBJECT TO EASEMENT INST.'S  
NS11576, NS132710, NS152217, NS152218

PART 5 PLAN 4R-21324  
SUBJECT TO EASEMENT INST.'S  
NS11576, NS132710, NS152217, NS152218

PART 1 PLAN 4R-21324  
PIN 04511 - 1631

CANADIAN PIN

RAILWAY 0042

NATIONAL RAILS

LOT 7 (MARCH)

LOT 6 CONCESSION 3

(MARCH)

SKETCH SHOWING  
UNDERGROUND WATERMAIN AND HYDRO AT  
EASTERLY PORTION OF

100 STEACIE DRIVE  
CITY OF OTTAWA

Prepared by Annis, O'Sullivan, Vollebakk Ltd.  
October 8, 2019

Scale 1 : 400



Metric

DISTANCES SHOWN ON THIS PLAN ARE IN METRES AND  
CAN BE CONVERTED TO FEET BY DIVIDING BY 0.3048

Notes & Legend

Denotes	
○ UP	Utility Pole
— W —	Underground Water
— P —	Underground Hydro
○ FH	Fire Hydrant
⊙ W	Water Valve
○ MH-S	Maintenance Hole (Sanitary)

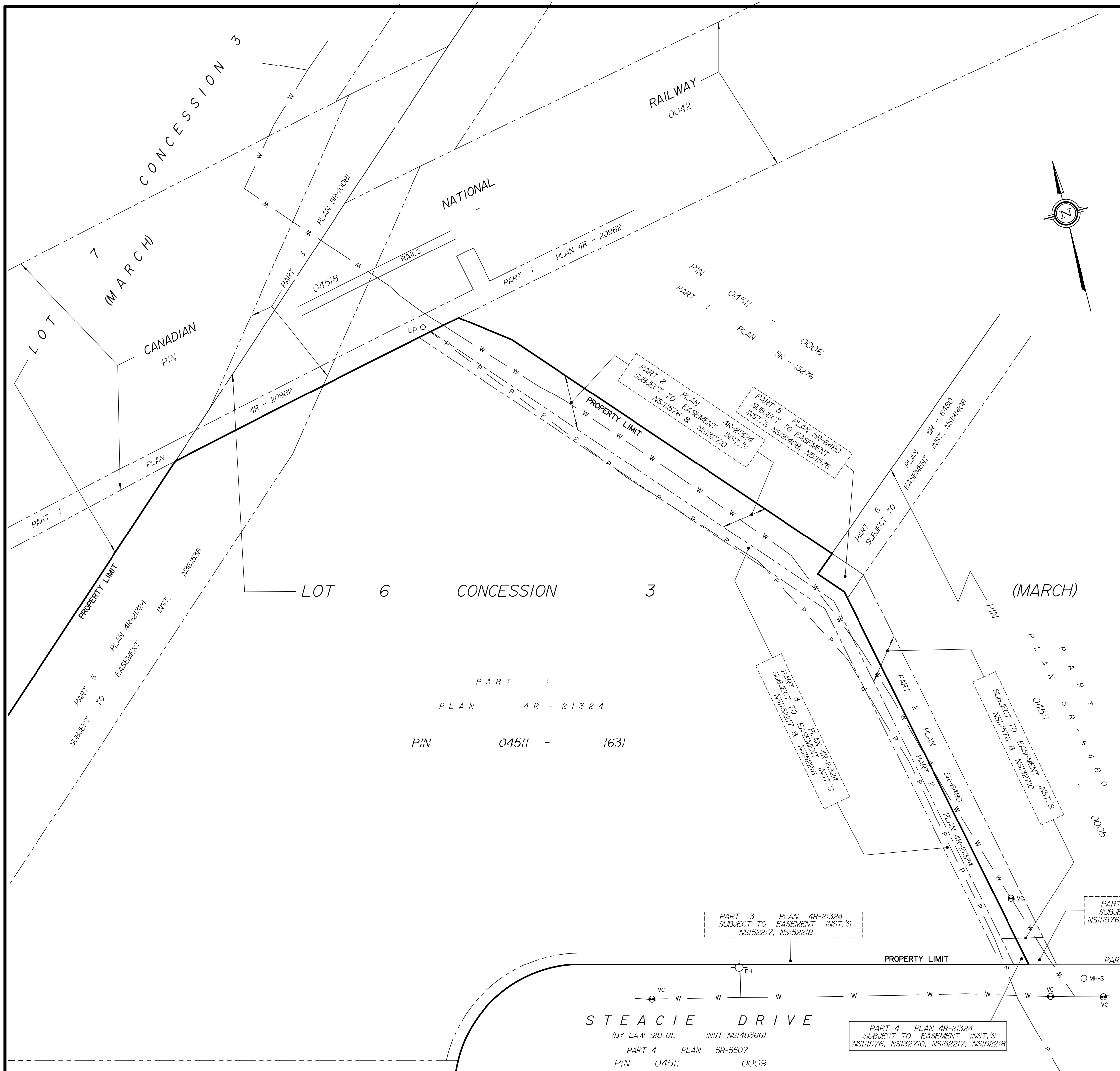
Caution

This is NOT a Plan of Survey and shall not be used  
except for the purpose indicated in the title block.

Boundary information compiled from Plan 4R-21324.

UTILITY NOTES

1. This drawing cannot be accepted as acknowledging all of the utilities and it will be the responsibility of the user to contact the respective utility authorities for confirmation.
2. Only visible surface utilities were located.
3. A field location of underground plant by the pertinent utility authority is mandatory before any work involving breaking ground, probing, excavating etc.
4. Underground Water & Underground Hydro utilities are show as marked on ground by T2 Utility Engineers Inc.



© Annis, O'Sullivan, Vollebakk Ltd. 2019. THIS PLAN IS PROTECTED BY COPYRIGHT™

**ANNIS, O'SULLIVAN, VOLLEBEKK LTD.**  
14 Concourse Gate, Suite 500  
Nepean, Ont. K2E 7S6  
Phone: (613) 727-0850 / Fax: (613) 727-1079  
Email: Nepean@aovltd.com

Ontario  
**Land Surveyors** Job No. I7723-19 Brigil P1L1 6 C 3 MA Sketch DI

STEACIE DRIVE  
(BY LAW 128-81, INST NS148366)  
PART 4 PLAN 5R-5507  
PIN 04511 - 0009

PART 4 PLAN 4R-21324  
SUBJECT TO EASEMENT INST.'S  
NS11576, NS132710, NS152217, NS152218

PART 3 PLAN 5R-6480  
SUBJECT TO EASEMENT INST.'S  
NS11576, NS132710, NS152217, NS152218

PART 3 PLAN 4R-21324  
SUBJECT TO EASEMENT INST.'S  
NS152217, NS152218

PLAN PART 5 R - 6480  
SUBJECT TO EASEMENT INST.'S  
NS11576, NS132710

PART 3 PLAN 4R-21324  
SUBJECT TO EASEMENT INST.'S  
NS152217, NS152218

PART 2 PLAN 4R-21324  
SUBJECT TO EASEMENT INST.'S  
NS11576, NS132710

PART 5 PLAN 5R-6480  
SUBJECT TO EASEMENT INST.'S  
NS11576, NS132710, NS152217, NS152218

PART 6 PLAN 5R-6480  
SUBJECT TO EASEMENT INST.'S  
NS11576, NS132710, NS152217, NS152218

PART 5 PLAN 4R-21324  
SUBJECT TO EASEMENT INST.'S  
NS11576, NS132710, NS152217, NS152218

PART 1 PLAN 4R-21324  
PIN 04511 - 1631

CANADIAN PIN

RAILWAY 0042

NATIONAL RAILS

LOT 7 (MARCH)

LOT 6 CONCESSION 3

(MARCH)