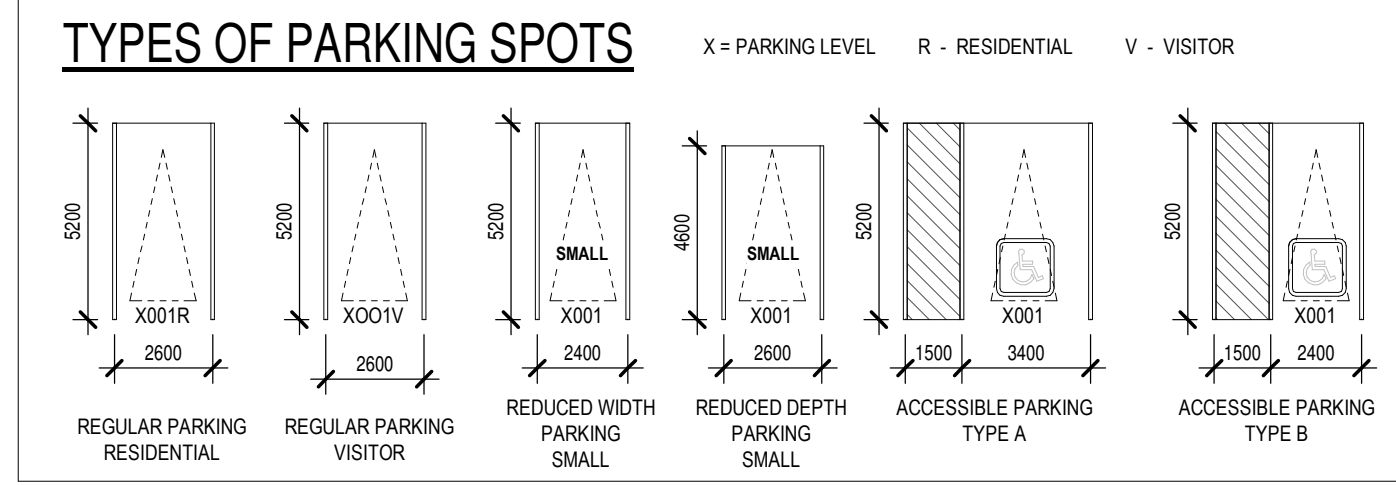


| PARKING                                      |                 |  |     |          |
|--|-----------------|--|-----|----------|
| AREA C - AS PER SCHEDULE 1A                  | Number of Units | Required   |     | Provided |
| Low-rise or mid-high-rise apartment dwelling | 214             | 0.8 per dwelling unit  | 171 | 171      |
| Visitors                                     | 214             | 0.2 per dwelling unit  | 43  | 43       |
| Accessible (included in visitors count)      | 214             | 1-12=1 Type A<br>13-100=4% of total (50% Type A / 50% Type B)<br>101-200=1+3% of total (50% Type A / 50% Type B)<br>201-1000=2+2% of total (50% Type A / 50% Type B)<br>1001+=11+1% of total (50% Type A / 50% Type B) | 7   | 7        |
| <b>TOTAL PARKING SPACES</b>                  |                 |  | 214 | 214      |

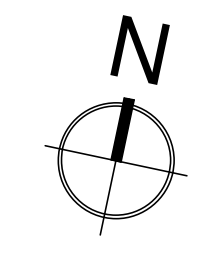
  

| BICYCLE PARKING                              |                 |                       |          |     |
|--|-----------------|-----------------------|----------|-----|
| Low-rise or mid-high-rise apartment dwelling | Number of Units | Required              | Provided |     |
| Low-rise or mid-high-rise apartment dwelling | 214             | 0.5 per dwelling unit | 107      | 107 |



**PARKING LEGEND**

| PARKING COUNT             | PARKING TYPE & SIZE                         |
|---------------------------|---|
| 170                       | RESIDENTIAL - 2600mmx5200mm                 |
| 1                         | RESIDENTIAL REDUCED WIDTH- 2400mmx5200mm    |
| 36                        | VISITOR - 2600mmx5200mm                     |
| 3                         | VISITOR ACCESSIBLE (TYPE A) - 3400mmx5200mm |
| 4                         | VISITOR ACCESSIBLE (TYPE B) - 2400mmx5200mm |
| <b>TOTAL PARKING: 214</b> |   |



**Legend**

- Studio
- 1 Bedroom
- 1 Bedroom + Den
- 2 Bedroom
- 2 Bedroom + Den
- 3 Bedroom
- 3 Bedroom + Den
- Services (M,E)
- Green Space
- Lobby
- Commercial
- Amenities
- Exits
- Parking
- Bicycle Spaces
- Lockers

**NOTES GÉNÉRALES / General Notes**

- Ces documents d'architecture sont la propriété exclusive de NEUF architectes et ne peuvent être utilisés, reproduits ou copiés sans autorisation écrite préalable. / These architectural documents are the exclusive property of NEUF architectes and cannot be used, copied or reproduced without written pre-authorization.
- Les dimensions apparaissant sur ces documents doivent être vérifiées par l'entrepreneur avant le début des travaux. / All dimensions which appear on the documents must be verified by the contractor before to start the work.
- Veuillez aviser l'architecte de toute dimension erronée et/ou divergences entre ces documents et ceux des autres professionnels. / The architect must be notified of all errors, omissions and discrepancies between these documents and those of the other professionals.
- Les dimensions sur ces documents doivent être lues et non mesurées. / The dimensions on these documents must be read and not measured.

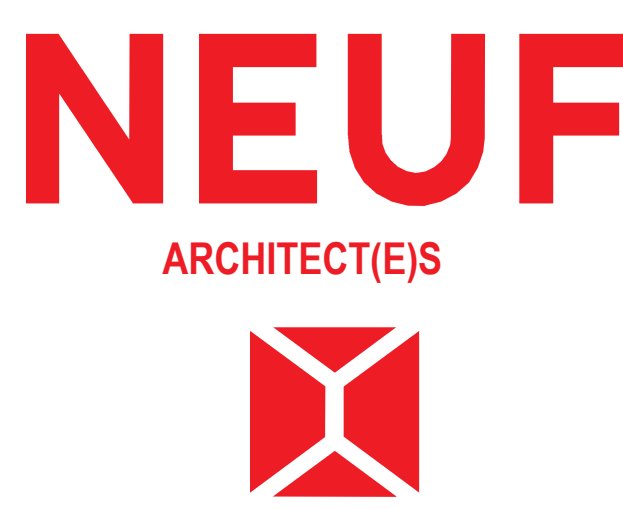
PLANIFICATEUR / Planner  
**J.L. Richards & Associates Limited**  
 100-343 Preston Street, Ottawa, ON, K1S 1M4  
 613.728.2071 www.jrichards.ca

ARCHITECTURE DE PAYSAGE / Landscape Architect  
**Siteform Inc. Landscape Architecture**  
 Ottawa, ON, K1S 1S5  
 613.796.4537 www.siteform.ca

CIVIL / Civil  
**Stantec Consulting Ltd**  
 400 - 1331 Clyde Avenue, Ottawa, ON  
 613.722.4820 www.stantec.com

ARCHITECTES / Architect  
**NEUF Architectes Inc.**  
 625, rue, René-Lévesque C, Ste-Émeline, Montréal QC H3B 1S6  
 T: 514 847 1117 www.neuf.ca

SCÉAU / Seal



CLIENT / Client  
**brigil**  
 A 98 Lois Street, Gatineau QC J8Y 3R7  
 T: 819-243-7392 Email: A.Rivard@brigil.com; anthonyjohnston@brigil.com

OUVRAGE / Project  
**STÉACIE DRIVE**

EMPLACEMENT / Location  
 100 STÉACIE DRIVE,  
 KANATA, OTTAWA

NO PROJET / No.  
 13264

| NO | REVISION              | DATE (aa-mm-ii) |
|----|-----------------------|-----------------|
| 1  | SITE PLAN APPLICATION | 2024.07.24      |

Préliminaire  
 NE PAS UTILISER POUR  
 CONSTRUCTION

DESSINÉ PAR / Drawn by  
 Auteur

VERIFIÉ PAR / Checked by  
 Vérificateur

DATE (aa-mm-ii)  
 2023-01-01

ÉCHELLE / Scale  
 As

TITRE DU DESSIN / Drawing Title  
 indicated

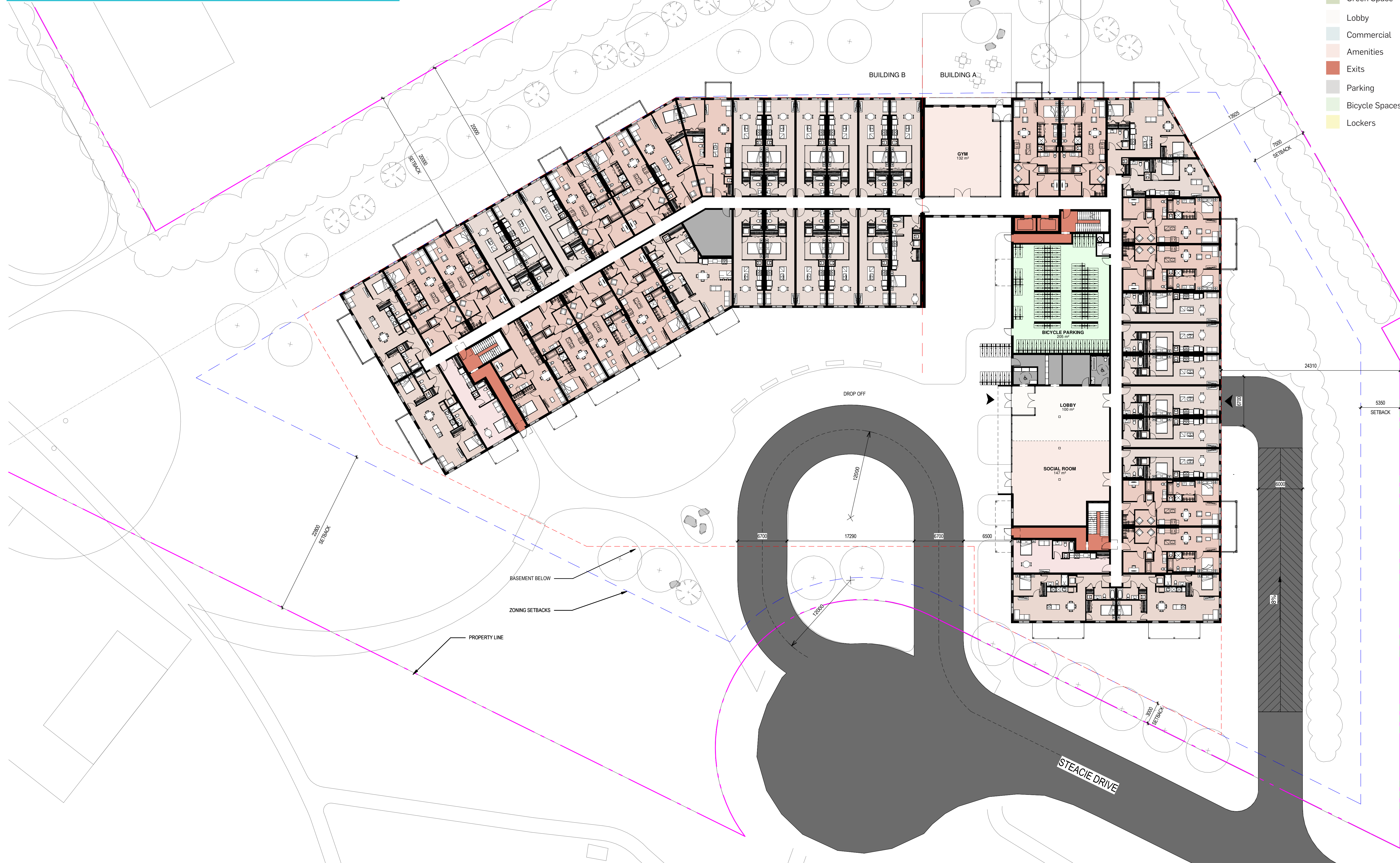
**BASEMENT FLOOR PLAN**

REVISION / Revision  
**1**

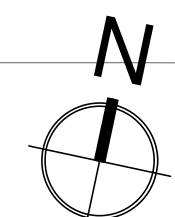
NO. DESSIN / Drawing Number  
**A200**



| PARKING                                      |                 |  |          |          |
|--|-----------------|--|----------|----------|
| AREA C - AS PER SCHEDULE 1A                  | Number of Units | Required   |          | Provided |
| Low-rise or mid-high-rise apartment dwelling | 214             | 0.8 per dwelling unit  | 171      | 171      |
| Visitors                                     | 214             | 0.2 per dwelling unit  | 43       | 43       |
| Accessible (included in visitors count)      | 214             | 1-12=1 Type A<br>13-100=4% of total (50% Type A / 50% Type B)<br>101-200=1+3% of total (50% Type A / 50% Type B)<br>201-1000=2+2% of total (50% Type A / 50% Type B)<br>1001+=11+1% of total (50% Type A / 50% Type B) | 7        | 7        |
| <b>TOTAL PARKING SPACES</b>                  |                 |  | 214      | 214      |
| BICYCLE PARKING                              |                 |  |          |          |
| Low-rise or mid-high-rise apartment dwelling | Number of Units | Required   | Provided |          |
|  | 214             | 0.5 per dwelling unit  | 107      | 107      |



- Legend**
- Studio
  - 1 Bedroom
  - 1 Bedroom + Den
  - 2 Bedroom
  - 2 Bedroom + Den
  - 3 Bedroom
  - 3 Bedroom + Den
  - Services (M.E)
  - Green Space
  - Lobby
  - Commercial
  - Amenities
  - Exits
  - Parking
  - Bicycle Spaces
  - Lockers



**NOTES GÉNÉRALES / General Notes**

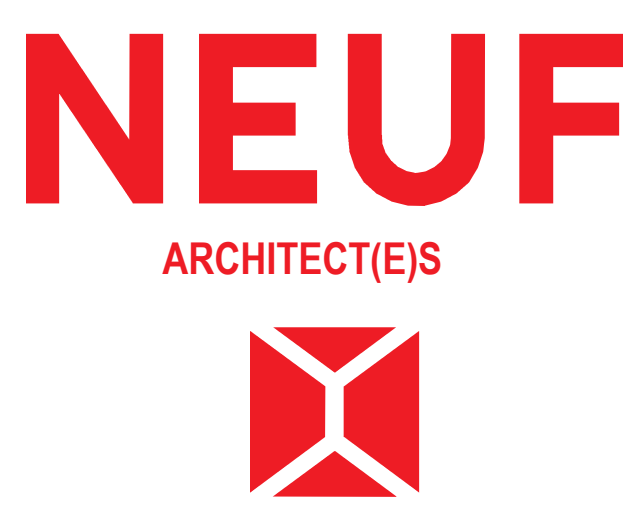
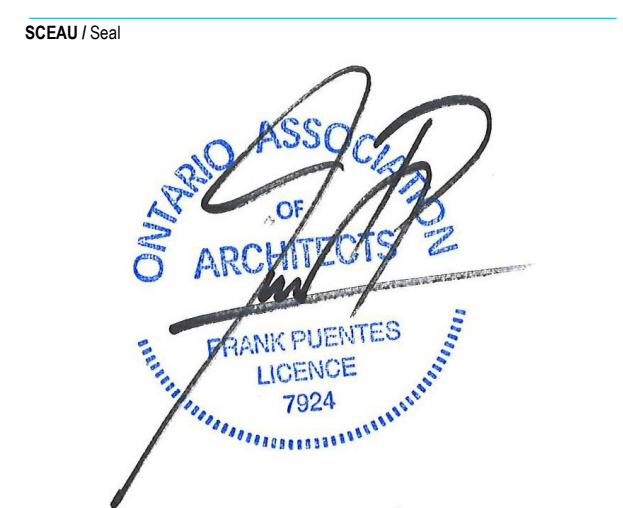
- Ces documents d'architecture sont la propriété exclusive de NEUF architectes et ne peuvent être utilisés, reproduits ou copiés sans autorisation écrite préalable. / These architectural documents are the exclusive property of NEUF architectes and cannot be used, copied or reproduced without written pre-authorization.
- Les dimensions apparaissant sur ces documents doivent être vérifiées par l'entrepreneur avant le début des travaux. / All dimensions which appear on the documents must be verified by the contractor before to start the work.
- Veuillez aviser l'architecte de toute dimension erronée et/ou divergences entre ces documents et ceux des autres professionnels. / The architect must be notified of all errors, omissions and discrepancies between these documents and those of the other professionals.
- Les dimensions sur ces documents doivent être lues et non mesurées. / The dimensions on these documents must be read and not measured.

PLANIFICATEUR / Planner  
**J.L. Richards & Associates Limited**  
 100-343 Preston Street, Ottawa, ON, K1S 1M4  
 613.728.2071 www.jrichards.ca

ARCHITECTURE DE PAYSAGE / Landscape Architect  
**Siteform Inc. Landscape Architecture**  
 Ottawa, ON, K1S 3S8  
 613.796.4537 www.siteform.ca

CIVIL / Civil  
**Stantec Consulting Ltd**  
 400 - 1331 Clyde Avenue, Ottawa, ON  
 613.722.4820 www.stantec.com

ARCHITECTES / Architect  
**NEUF Architectes Inc.**  
 651, rue, René-Lévesque C, Ste-Émeline, Montréal QC H3B 1S6  
 T 514 847 1117 www.neuf.ca



CLIENT / Client  
**brigil**  
 A 98 Lois Street, Gatineau QC J8Y 3R7  
 T: 819-243-7392 Email: A.Rivard@brigil.com; anthonyjohnston@brigil.com

OUVRAGE / Project  
**STEACIE DRIVE**

EMPLACEMENT / Location  
 100 STEACIE DRIVE,  
 KANATA, OTTAWA

NO PROJET / No.  
 13264

| NO | REVISION              | DATE (aa-mm-jj) |
|----|-----------------------|-----------------|
| 1  | SITE PLAN APPLICATION | 2024.07.24      |

Préliminaire  
NE PAS UTILISER POUR  
CONSTRUCTION

DESSINÉ PAR / Drawn by  
 Auteur

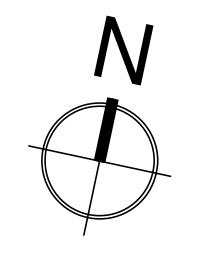
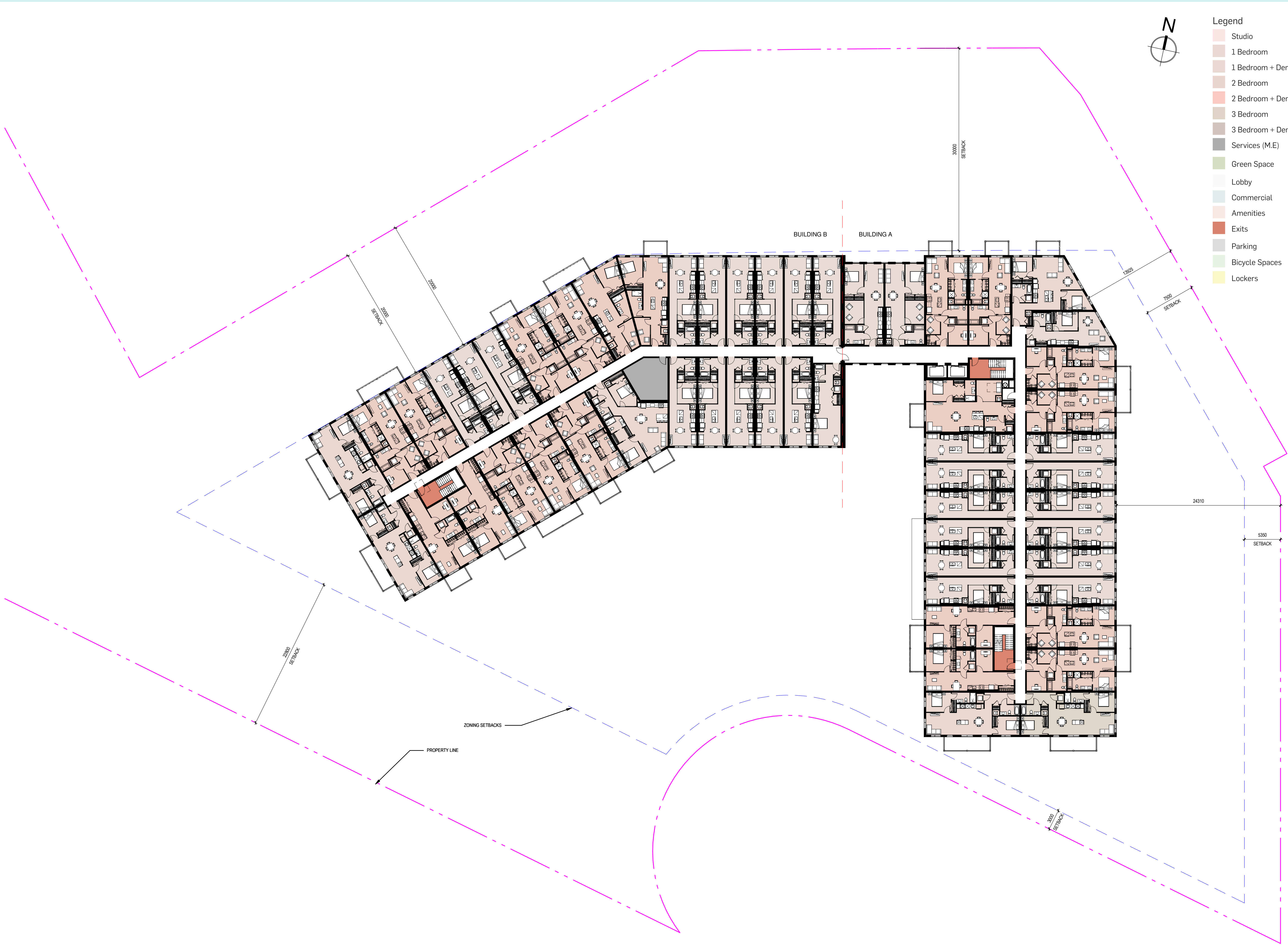
VERIFIÉ PAR / Checked by  
 Vérificateur

DATE (aa-mm-jj)  
 2023-01-01

ÉCHELLE / Scale  
 1 : 250

**GROUND FLOOR PLAN**





- Legend**
- Studio
  - 1 Bedroom
  - 1 Bedroom + Den
  - 2 Bedroom
  - 2 Bedroom + Den
  - 3 Bedroom
  - 3 Bedroom + Den
  - Services (M,E)
  - Green Space
  - Lobby
  - Commercial
  - Amenities
  - Exits
  - Parking
  - Bicycle Spaces
  - Lockers

**NOTES GÉNÉRALES / General Notes**

- Ces documents d'architecture sont la propriété exclusive de NEUF architect(e)s et ne peuvent être utilisés, reproduits ou copiés sans autorisation écrite préalable. / These architectural documents are the exclusive property of NEUF architect(e)s and cannot be used, copied or reproduced without written pre-authorization.
- Les dimensions apparaissant sur documents doivent être vérifiées par l'entrepreneur avant le début des travaux. / All dimensions which appear on the documents must be verified by the contractor before to start the work.
- Vous devez aviser l'architecte de toute dimension erronée et/ou divergences entre ces documents et ceux des autres professionnels. / The architect must be notified of all errors, omissions and discrepancies between these documents and those of the other professionals.
- Les dimensions sur ces documents doivent être lues et non mesurées. / The dimensions on these documents must be read and not measured.

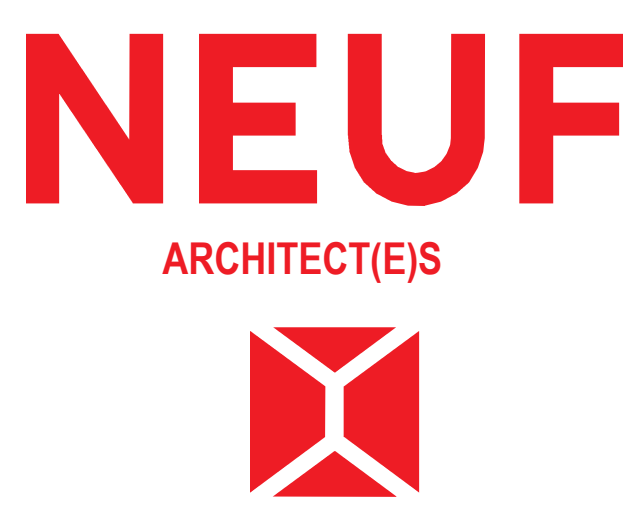
**PLANIFICATEUR / Planner**  
**J.L. Richards & Associates Limited**  
 100-343 Preston Street, Ottawa, ON, K1S 1M4  
 613.728.2071 www.jrichards.ca

**ARCHITECTURE DE PAYSAGE / Landscape Architect**  
**Siteform Inc. Landscape Architecture**  
 Ottawa, ON, K1S 1S5  
 613.796.4537 www.siteform.ca

**CIVIL / Civil**  
**Stantec Consulting Ltd**  
 400 - 1331 Clyde Avenue, Ottawa, ON  
 613.722.4420 www.stantec.com

**ARCHITECTES / Architect**  
**NEUF Architectes Inc.**  
 625, boul. René-Lévesque C. Ste. Steeles, Montréal, QC H3B 1S6  
 T: 514 847 1117 www.neuf.ca

**SCEAU / Seal**



**CLIENT / Client**  
**brigil**  
 A 98 Lois Street, Gatineau, QC J8Y 3R7  
 T: 819-243-7392 Email: A.Rivard@brigil.com; anthonyjohnston@brigil.com

**OUVRAGE / Project**  
**STEACIE DRIVE**

**EMPLACEMENT / Location**  
 100 STEACIE DRIVE,  
 KANATA, OTTAWA

**NO PROJET / No.**  
 13264

| NO | REVISION              | DATE (aa-mm-ii) |
|----|-----------------------|-----------------|
| 1  | SITE PLAN APPLICATION | 2024.07.24      |

Préliminaire  
 NE PAS UTILISER POUR  
 CONSTRUCTION

**DESSINÉ PAR / Drawn by**  
 Auteur

**VERIFIÉ PAR / Checked by**  
 Vérificateur

**DATE / Date**  
 2023-01-01

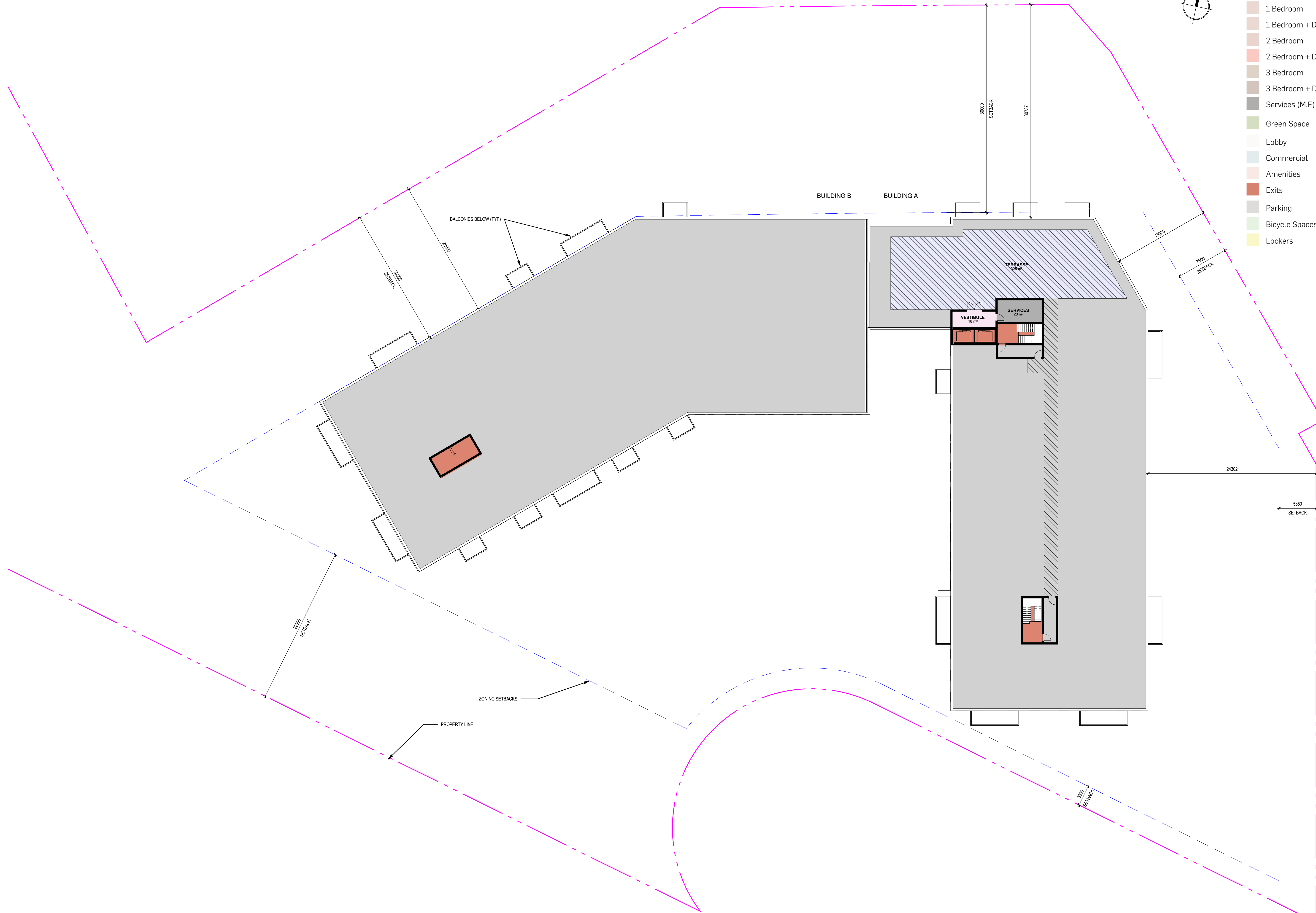
**ÉCHELLE / Scale**  
 1 : 250

**TITRE DU DESSIN / Drawing Title**  
**TYPICAL FLOOR PLAN**

**NO. DESSIN / Drawing Number**  
**1**

**NO. PROJET / No.**  
**A202**





Legend

- Studio
- 1 Bedroom
- 1 Bedroom + Den
- 2 Bedroom
- 2 Bedroom + Den
- 3 Bedroom
- 3 Bedroom + Den
- Services (M.E)
- Green Space
- Lobby
- Commercial
- Amenities
- Exits
- Parking
- Bicycle Spaces
- Lockers

NOTES GÉNÉRALES / General Notes

1. Ces documents d'architecture sont la propriété exclusive de NEUF architectes et ne peuvent être utilisés, reproduits ou copiés sans autorisation écrite préalable. / These architectural documents are the exclusive property of NEUF architectes and cannot be used, copied or reproduced without written pre-authorization.
2. Les dimensions apparaissant sur ces documents doivent être vérifiées par l'entrepreneur avant le début des travaux. / All dimensions which appear on the documents must be verified by the contractor before to start the work.
3. Veuillez aviser l'architecte de toute dimension erronée et/ou divergences entre ces documents et ceux des autres professionnels. / The architect must be notified of all errors, omissions and discrepancies between these documents and those of the other professionals.
4. Les dimensions sur ces documents doivent être lues et non mesurées. / The dimensions on these documents must be read and not measured.

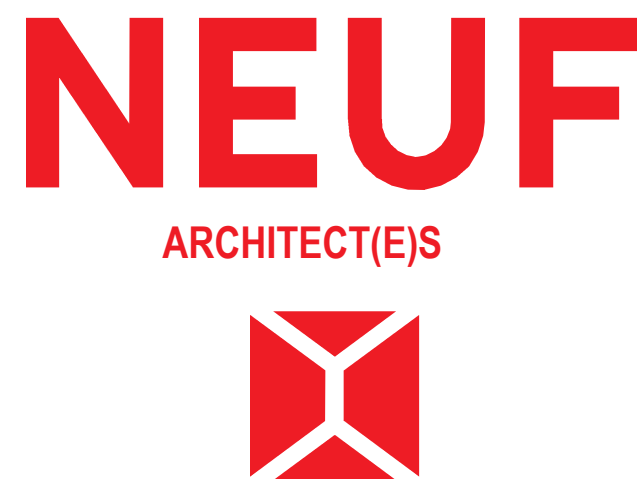
PLANIFICATEUR / Planner  
**J.L. Richards & Associates Limited**  
 100-343 Preston Street, Ottawa, ON, K1S 1M4  
 613.728.2071 www.jrichards.ca

ARCHITECTURE DE PAYSAGE / Landscape Architect  
**Siteform Inc. Landscape Architecture**  
 Ottawa, ON, K1S 1S5  
 613.796.4537 www.siteform.ca

CIVIL / Civil  
**Stantec Consulting Ltd**  
 400 - 1331 Clyde Avenue, Ottawa, ON  
 613.722.4620 www.stantec.com

ARCHITECTES / Architect  
**NEUF Architectes Inc.**  
 625, boul. René-Lévesque E., 5<sup>e</sup> étage, Montréal QC H3B 1S6  
 T 514 847 1117 www.neuf.ca

SCEAU / Seal



CLIENT / Client  
**brigil**  
 A 98 Lois Street, Gatineau QC J8Y 3R7  
 T: 819-243-7392 Email: A.Rivard@brigil.com; anthonyjohnston@brigil.com

OUVRAGE / Project  
**STEACIE DRIVE**

EMPLACEMENT / Location  
 100 STEACIE DRIVE,  
 KANATA, OTTAWA

NO PROJET / No.  
 13264

| NO | REVISION              | DATE (aa-mm-ii) |
|----|-----------------------|-----------------|
| 1  | SITE PLAN APPLICATION | 2024.07.24      |

Préliminaire  
 NE PAS UTILISER POUR  
 CONSTRUCTION

DESSINÉ PAR / Drawn by  
 Auteur

VERIFIÉ PAR / Checked by  
 Vérificateur

DATE (aa-mm-ii)  
 2023-01-01

ÉCHELLE / Scale  
 1 : 250

ROOF PLAN