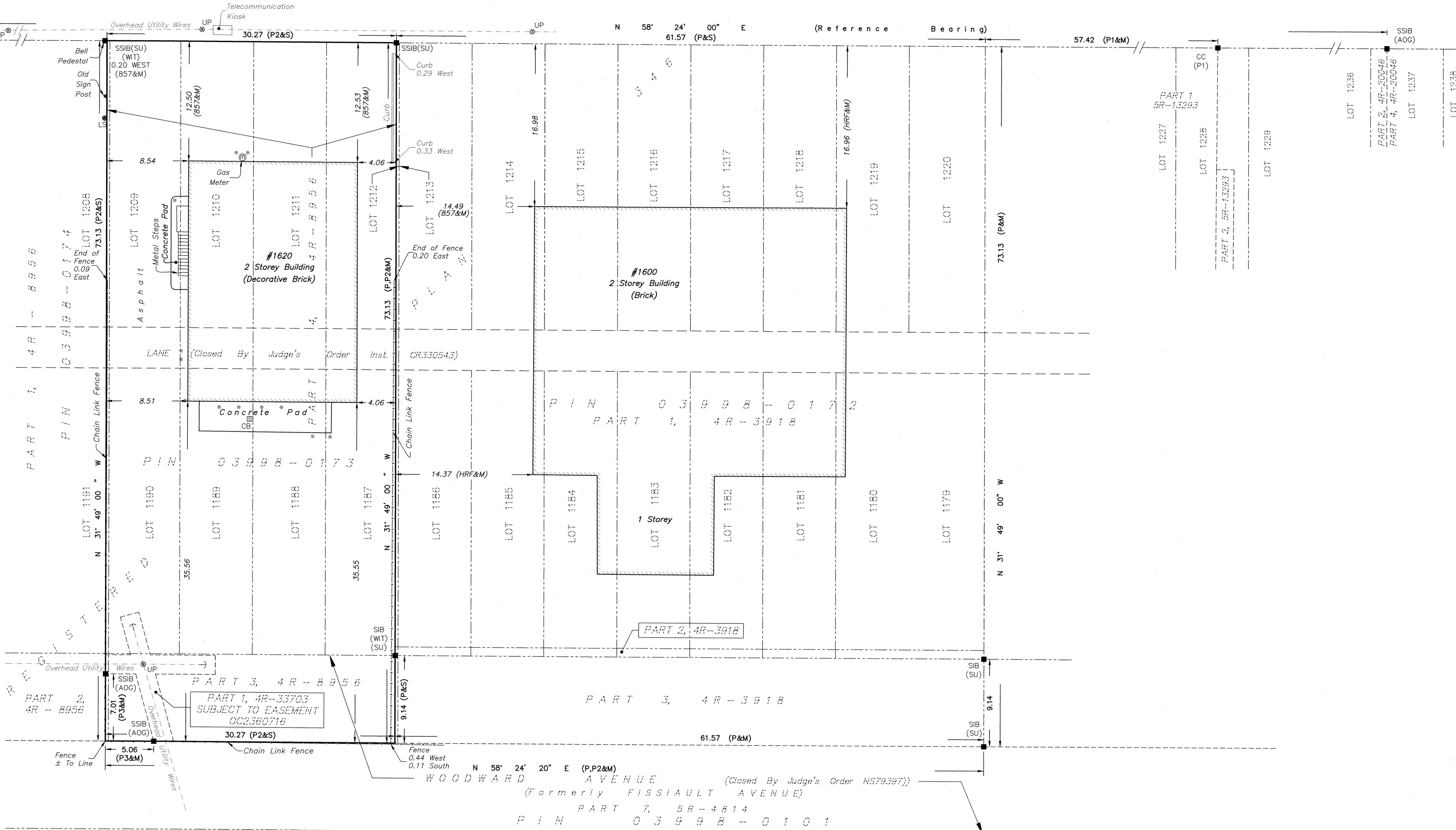


METRIC
DISTANCES SHOWN ON THIS PLAN ARE IN METRES AND CAN BE CONVERTED TO FEET BY DIVIDING BY 0.3048

LAPERRIERE AVENUE
PIN 04003-0097

N 58° 24' 00" E (Reference Bearing)
61.57 (P&S)

CLYDE AVENUE



SURVEYOR'S REAL PROPERTY REPORT - PART 1
PLAN OF
LOTS 1188 TO 1190,
LOTS 1209 TO 1211
PART OF LOTS 1187, 1191, 1208 AND 1212
PART OF LANE (Closed By INST. CR330543) AND
PART OF WOODWARD AVENUE
(Closed By INST. NS79397)
REGISTERED PLAN 346
CITY OF OTTAWA

SCALE 1 : 250
0 5 10 20 25 metres
FAIRHALL, MOFFATT & WOODLAND LIMITED
ONTARIO LAND SURVEYORS

NOTES
BEARINGS ARE ASTRONOMIC AND ARE REFERRED TO THE SOUTHERLY LIMIT OF LAPERRIERE AVENUE SHOWN ON PLAN 4R-8956 AS HAVING A BEARING OF N 58° 24' 00" E.

- LEGEND**
- - SURVEY MONUMENT FOUND
 - SIB - STANDARD IRON BAR
 - SSIB - SHORT STANDARD IRON BAR
 - (P) - PLAN 4R-3918
 - (P1) - PLAN 5R-13293
 - (P2) - PLAN 4R-8956
 - (P3) - PLAN 4R-33703
 - (S) - SET
 - (M) - MEASURED
 - (857) - FAIRHALL, MOFFATT & WOODLAND LIMITED, O.L.S. (REF. 78 - 346 NP)
 - (AOG) - ANNIS, O'SULLIVAN, VOLLEBEKK LTD., O.L.S.
 - (HRF) - FARLEY & MARTIN LTD., O.L.S. (JANUARY 20, 1982)
 - (SU) - SOURCE UNKNOWN
 - (WIT) - WITNESS
 - PIN - PROPERTY IDENTIFIER NUMBER
 - LS - LAMP STANDARD
 - ⊕ UP - UTILITY POLE
 - ⊕ - GUY WIRE AND ANCHOR
 - ⊕ CB - CATCH BASIN
 - ⊕ - BOLLARD

SURVEYOR'S REAL PROPERTY REPORT - PART 2
REPORT SUMMARY

DESCRIPTION OF LAND
LOTS 1188 TO 1190, LOTS 1209 TO 1211, PART OF LOTS 1187, 1191, 1208, AND 1212, PART OF LANE (Closed By INST. CR330543) AND, PART OF WOODWARD AVENUE (Closed By INST. NS79397), REGISTERED PLAN 346, CITY OF OTTAWA, AS IN ALL OF PIN 03998-0173.

REGISTERED EASEMENTS
PART SUBJECT TO EASEMENT INST. OC2360716 OVER PART 1, 4R-33703 IN FAVOUR OF HYDRO OTTAWA LIMITED.

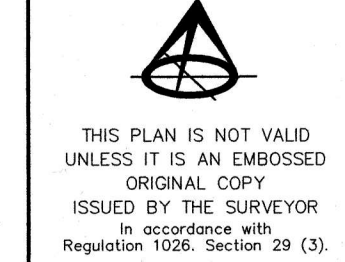
REMARKS
NOTE LOCATION OF PERIMETER FENCES AND CURBS AS SHOWN ON PART 1, THE PLAN.

ZONING
COMPLIANCE WITH ZONING, LAND USE, ENVIRONMENTAL AND BUILDING REGULATIONS NOT CERTIFIED BY THIS REPORT.

THIS REPORT WAS PREPARED FOR 898652 ONTARIO INC. AND 2565990 ONTARIO INC. THE UNDERSIGNED ACCEPTS NO RESPONSIBILITY FOR USE BY OTHER PARTIES.

ASSOCIATION OF ONTARIO LAND SURVEYORS
PLAN SUBMISSION FORM
V-78079

SURVEYOR'S CERTIFICATE
I CERTIFY THAT:
1. THIS SURVEY AND PLAN ARE CORRECT AND IN ACCORDANCE WITH THE SURVEYORS ACT, THE SURVEYORS ACT AND THE REGULATIONS MADE UNDER THEM.
2. THE SURVEY WAS COMPLETED ON JULY 12, 2024.
DATE: 2024/07/15
JOHN H. GUTRI
ONTARIO LAND SURVEYOR



Fairhall Moffatt & Woodland LIMITED
OTTAWA
Ontario Land Surveyors
Surveying and Land Information Services
100-600 TERRY FOX DRIVE, KANATA, ONTARIO K2L 4B6
TEL: (613) 591-2580 FAX: (613) 591-1495
www.fmw.on.ca

JOB No. AE16800
E 363800, N 5026451
REFERENCE No. 83 - 346 NP
S:\JOBS\AE16800\DWG 15JULY2024 SRPR_AE168.dwg (ss)

© COPYRIGHT 2024. REPRODUCTION, ALTERATION OR DISTRIBUTION OF THIS PLAN WITHOUT THE WRITTEN CONSENT OF FAIRHALL, MOFFATT & WOODLAND LIMITED IS PROHIBITED.