

Replacement Tree Specifications

Note: Proposed tree locations are suggestions only and should be finalized only once construction is complete and should adhere to City of Ottawa Tree Planting Guidelines.

Tree 1 should be a large tree at maturity. Site conditions are expected to be full light exposure and moderate moisture availability. Species suggestions include:

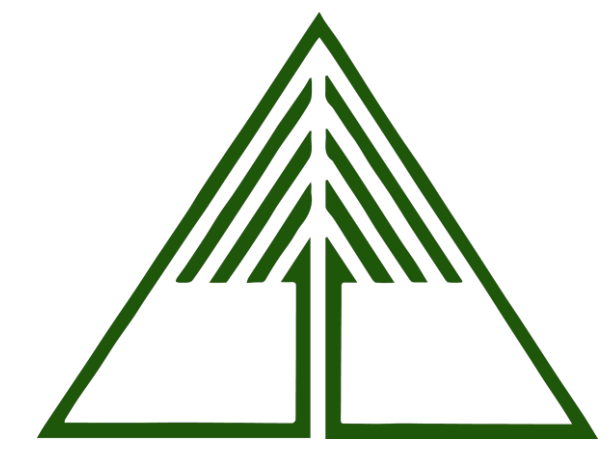
- White oak - *Quercus alba**
- Swamp white oak - *Quercus bicolor**
- Freeman maple - *Acer x freemanii*
- Liberty elm - *Ulmus americana* 'Libertas'*
- Northern catalpa - *Catalpa speciosa*
- Black walnut - *Juglans nigra**
- London plane tree - *Platanus x acerifolia*
- Sycamore - *Platanus occidentalis*
- Yellow birch - *Betula alleghaniensis**
- Kentucky coffee tree - *Gymnocladus dioica*s
- Basswood - *Tilia americana**
- Hackberry - *Celtis occidentalis**

*Native to Ottawa region: Planting species native to a region can help maintain and enhance biodiversity.

Note: Norway maple (*Acer platanoides*) is *not* recommended as it is highly invasive and not a suitable tree for urban planting.

The species recommended herein are the most suitable species based on the existing plans. For best success, tree species should be matched to site conditions.

All deciduous trees must be a minimum of 50 mm in diameter measured no less than 15 cm above ground level. Coniferous trees must be no less than 200 cm in height.



Tree Planting Plan – 1108 Maisonneuve Street

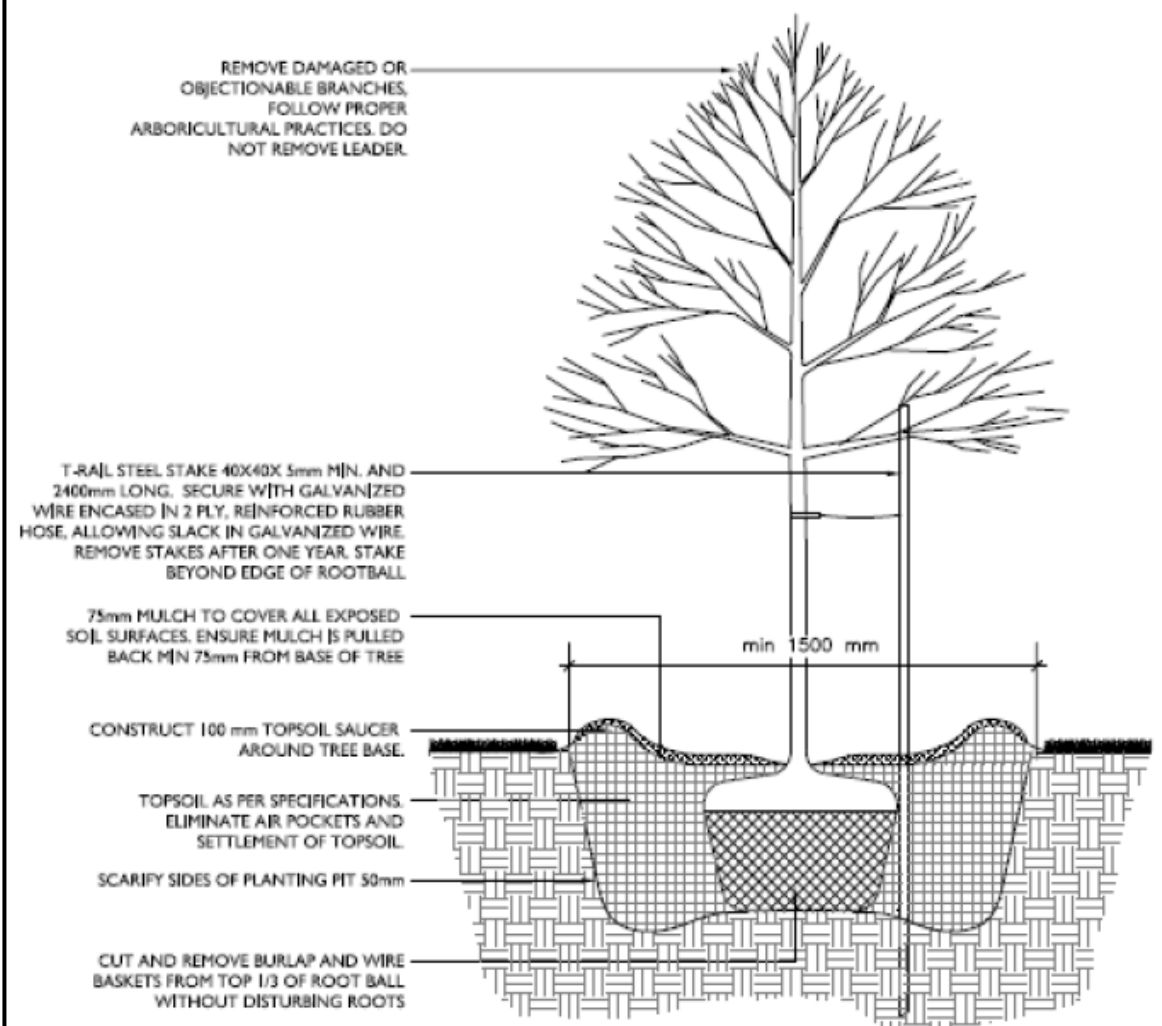
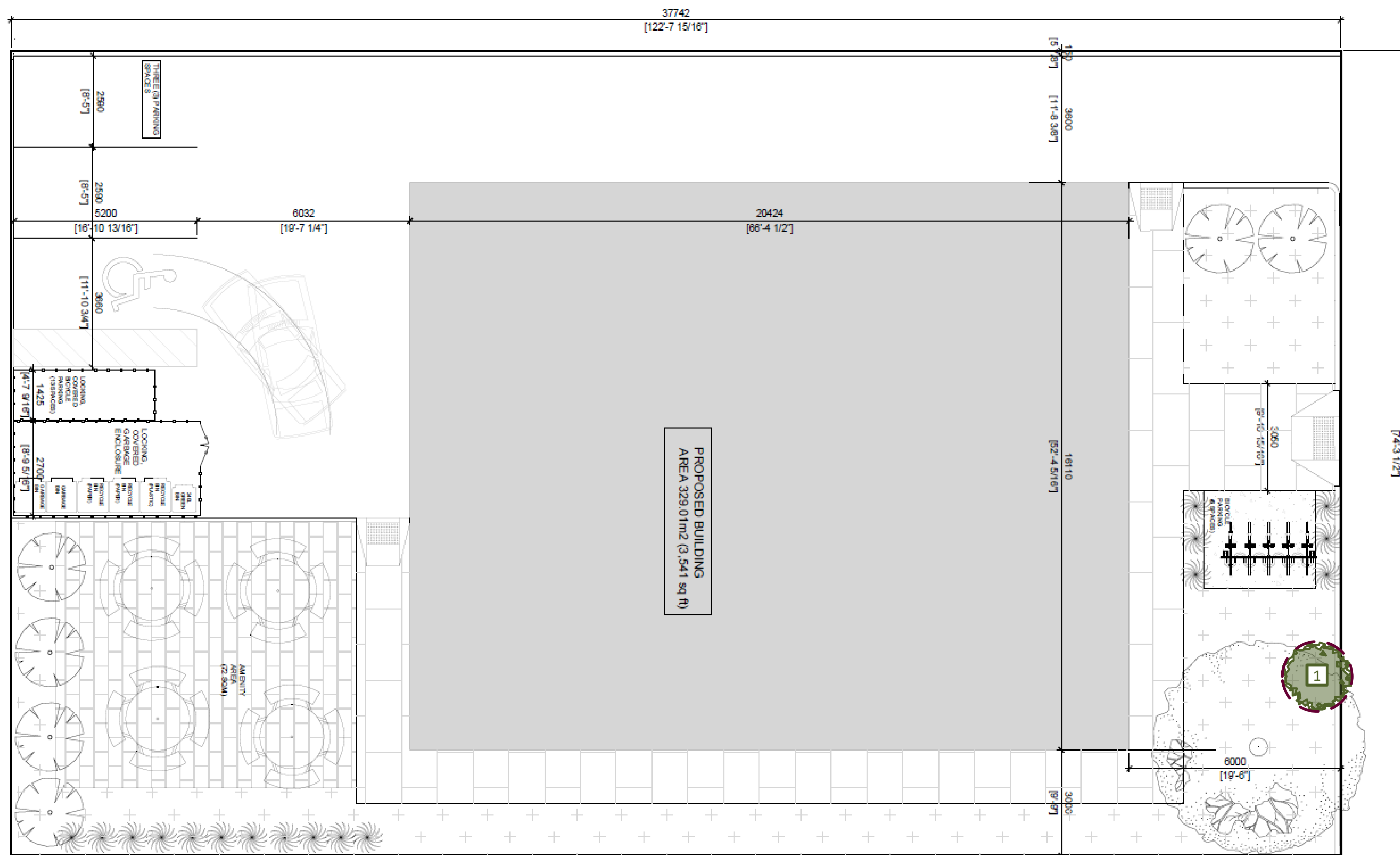
Prepared by Dendron Forestry Services

Version 2.0, July 23, 2024

For more information, please contact:

info@dendronforestry.ca

Note: the tree layer has been added to the original site plan supplied by the client in pdf format. This layer refers to the trees only, and the original site plan has not been altered in the process. Refer to the original plan for details as quality is lost when importing the plan into the mapping software used to create the tree layer.



NOTES:
 1. PROTECT TRUNK DURING TRANSPORT AND INSTALLATION. ALL WRAPPING TO BE REMOVED BEFORE FINAL INSPECTION.
 2. ALL PROTECTIVE WRAPPING SHALL BE REMOVED AFTER INSTALLATION.
 3. STAKING OF TREES SHALL BE PERFORMED ONLY IF DEEMED NECESSARY.
 4. ALL DIMENSION IN MILLIMETERS UNLESS OTHERWISE NOTED.

KEY SPACING GUIDELINES

For Deciduous Trees:

- Minimum 50mm caliper stock
- 1.5m from sidewalks, driveways, walkways, fences, sound walls, and old stumps.
- 2.5m from curbs, hydro transformers, or behind fire hydrants
- 4-7m from any part of an existing tree, depending on canopy width
- 10m from bus shelters and community mailboxes


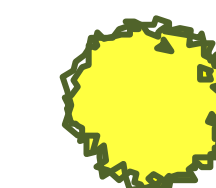
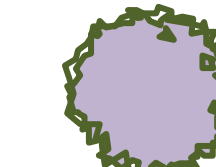
For Coniferous Trees:

- Follow same setbacks as deciduous, but due to the widest branching being at the base of the tree, conifers need greater setbacks for ground-level obstacles.
- Minimum 200cm height stock
- 4.5m setbacks from sidewalks, walkways, driveways, and curbs.
- Do not plant on corners where sight lines will be compromised.

TREES MUST BE WATERED REGULARLY FOLLOWING PLANTING TO ENSURE PROPER ESTABLISHMENT.

On average, a young tree needs 6 gallons (24 liters) of water twice per week. (Do not water using a sprinkler as water on the foliage can lead to fungal infection)
 Placing a ring of mulch around the planting hole will help reduce water loss.
 Ensure no mulch is touching the base of the tree.

Legend

-  New Private Tree
-  New Tree either fully or partly on city property
-  Existing Tree to be retained