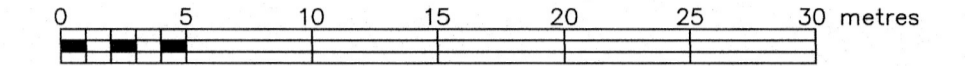


PART OF LOTS 27 & 28  
CONCESSION 6  
AND PART OF ROAD ALLOWANCE  
BETWEEN CONCESSIONS 6 AND  
CONCESSION 7  
(CLOSED BY INST. No. RR83392)  
GEOGRAPHIC TOWNSHIP OF CUMBERLAND  
CITY OF OTTAWA

FARLEY, SMITH & DENIS SURVEYING LTD. 2024

Scale 1: 300



Metric Note

Distances and/or coordinates on this plan are in metres and can be converted to feet by dividing by 0.3048.

Distance Note

Distances shown on this plan are ground distances and can be converted to grid distances by multiplying by the combined scale factor of 0.99996.

Bearing Note

Bearings hereon are grid bearings derived from the the easterly limit of Parts 1 & 2 on Plan 50R-5729 and are referred to the Central Meridian of MTM Zone 9 (76°30' West Longitude) Nad-83 (Original).

Elevation Notes

- Elevations shown are geodetic and are referred to Geodetic Datum CGVD-1928 :1978. (Monument No. 0011985U509)
- It is the responsibility of the user of this information to verify that the job benchmark has not been altered or disturbed and that its relative elevation and description agrees with the information shown on this drawing.

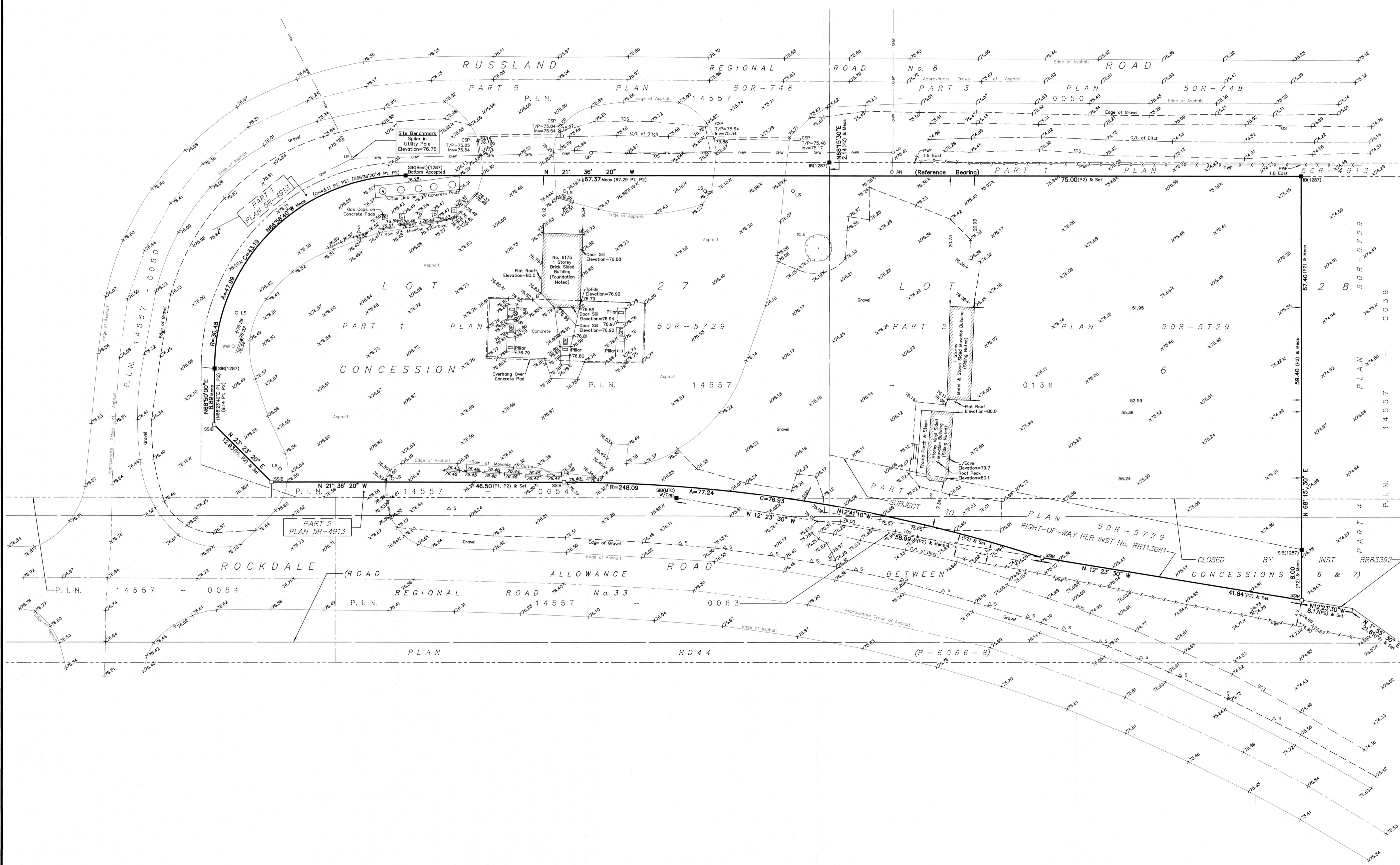
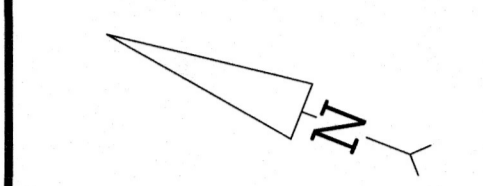
Utility Notes

- This drawing cannot be accepted as acknowledging all of the utilities and it will be the responsibility of the user to contact the respective utility authorities for confirmation.
- Only visible surface utilities were located.
- A field location of underground plant by the pertinent utility authority is mandatory before any work involving breaking ground, probing, excavating etc.
- Not all overhead wires/transformers adjacent to the property have been located, the nearest overhead wire locations are shown on the plan.

Notes & Legend

	Denotes	Survey Monument Planted
		Survey Monument Found
		Standard Iron Bar
		Short Standard Iron Bar
		Iron Bar
		Measured
		Plan by (1287) dated February 11, 1988
		Plan 50R-5729
		Overhead Wires
		Utility Pole
		Anchor
		Light Standard
		Corrugated Steel Pipe
		Gas Valve
		Bollard
		Sign
		Diameter
		Post and Wire Fence
		Invert
		Top of Pipe
		Underside of Eave
		Top of Foundation
		Centreline
		Top of Slope
		Bottom of Slope
		Gas Pump
		Location of Elevations
		Top of Concrete Curb
		Property Line
		Deciduous Tree - The Symbol shown denotes location and trunk diameter only. Size of its' root system/overhead canopy may be smaller/larger than the symbol size depicted on this plan.

Site Area=9115.9 sq.m.



Surveyor's Certificate

- I certify that:
- This survey and plan are correct and in accordance with the Surveys Act, the Surveyors Act and the Regulations made under them.
  - The survey was completed on the 15th day of May, 2024.

May 17/2024  
Date

Emad Alifraai  
Ontario Land Surveyor

This plan of survey relates to AOLS Plan Submission Form Number V-73466

FARLEY, SMITH & DENIS SURVEYING LTD.

ONTARIO LAND SURVEYORS  
CANADA LAND SURVEYORS

Unit 275, 30 COLONNADE ROAD, OTTAWA, ONTARIO K2E 7J6  
TEL: (613) 727-8226 E-mail: fdsurveys@bellnet.ca

WARNING: NO PERSON MAY COPY, REPRODUCE, DISTRIBUTE OR ALTER THIS PLAN IN WHOLE OR IN PART WITHOUT THE WRITTEN PERMISSION OF FARLEY, SMITH & DENIS SURVEYING LTD. © FARLEY, SMITH & DENIS SURVEYING LTD., 2024.