

T/G=63.93  
East Inv.=61.28  
North Inv.=61.15

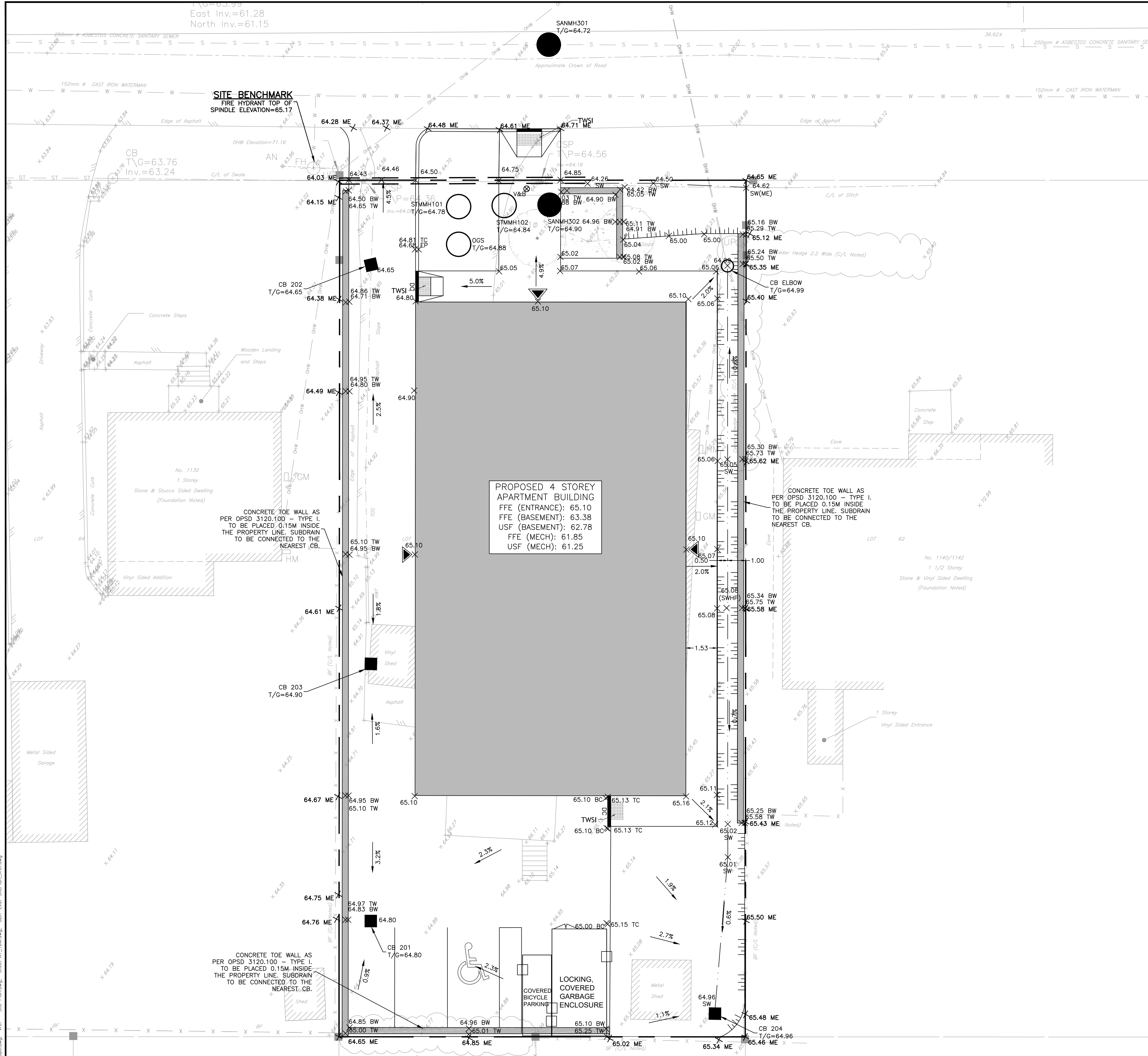
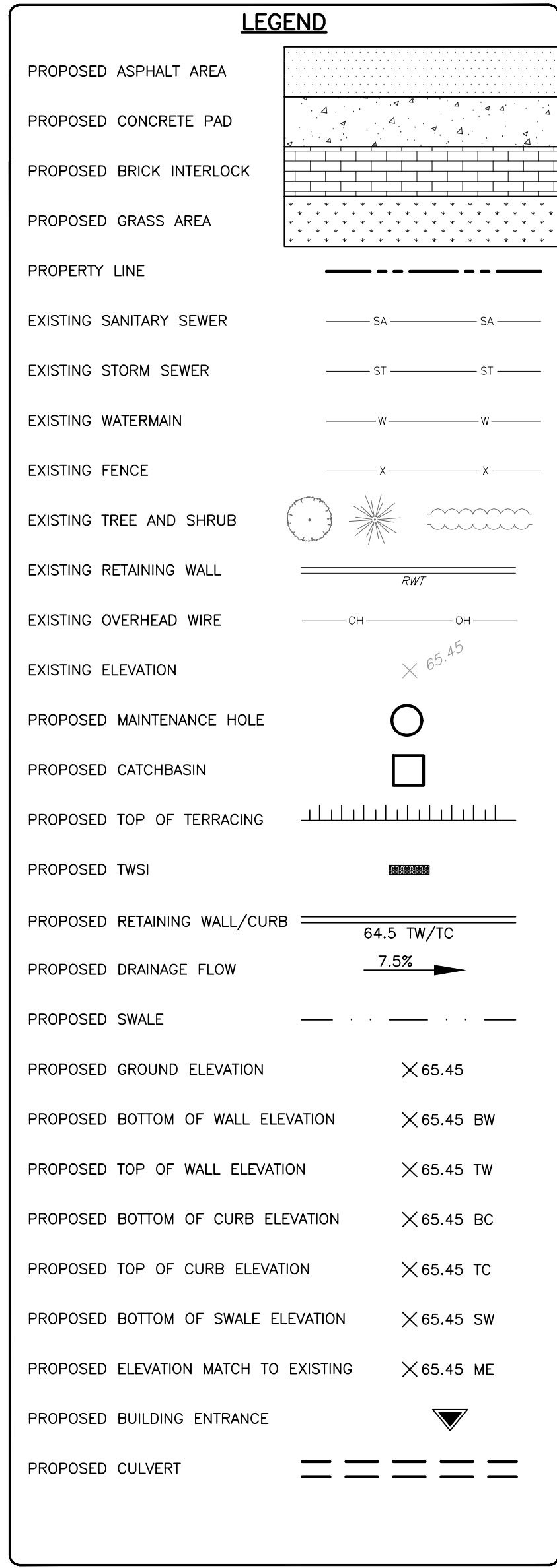
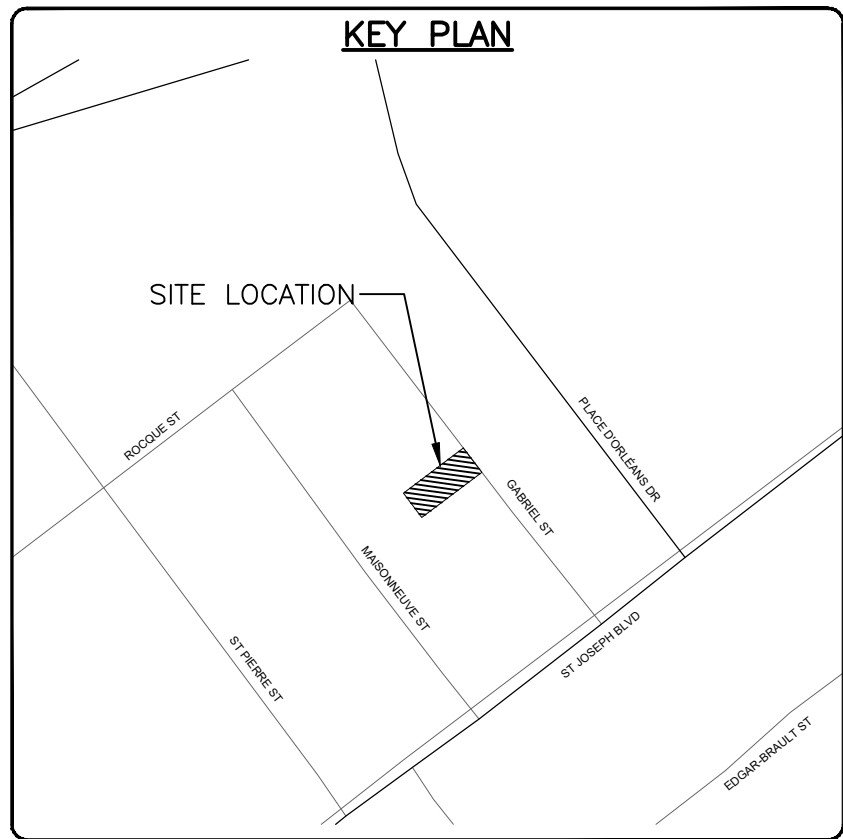
SANMH301  
T/G=64.72

**SITE BENCHMARK**  
FIRE HYDRANT TOP OF  
SPINDLE ELEVATION=65.17

**PROPOSED 4 STOREY  
APARTMENT BUILDING**  
FFE (ENTRANCE): 65.10  
FFE (BASEMENT): 63.38  
USF (BASEMENT): 62.78  
FFE (MECH): 61.85  
USF (MECH): 61.25

CONCRETE TOE WALL AS  
PER OPSD 3120.100 - TYPE I  
TO BE PLACED 0.15M INSIDE  
THE PROPERTY LINE. SUBDRAIN  
TO BE CONNECTED TO THE  
NEAREST CB.

CONCRETE TOE WALL AS  
PER OPSD 3120.100 - TYPE I  
TO BE PLACED 0.15M INSIDE  
THE PROPERTY LINE. SUBDRAIN  
TO BE CONNECTED TO THE  
NEAREST CB.



**CAUTION**  
THE POSITION OF ALL POLE LINES,  
CONDUITS, WATERMAINS, SEWERS AND OTHER  
UNDERGROUND AND OVERGROUND UTILITIES  
AND STRUCTURES IS NOT NECESSARILY  
SHOWN ON THE CONTRACT DRAWINGS, AND  
WHERE SHOWN, THE ACCURACY OF THE  
POSITION OF SUCH UTILITIES AND  
STRUCTURES IS NOT GUARANTEED. BEFORE  
STARTING WORK, DETERMINE THE EXACT  
LOCATION OF ALL SUCH UTILITIES AND  
STRUCTURES AND ASSUME ALL LIABILITY FOR  
DAMAGE TO THEM.

**JOB BENCH MARK** JBM ▲  
FIRE HYDRANT TOP OF SPINDLE ELEVATION=65.17

**TOPOGRAPHIC INFORMATION**  
PART OF LOT 63, REGISTERED PLAN 96,  
CITY OF OTTAWA.  
TOPOGRAPHIC INFORMATION PROVIDED BY ANNIS, O'SULLIVAN,  
VOLLEBECK LTD. O.L.S (V-53820) SURVEY DATED JULY 27, 2023.  
SITE GRID SYSTEM MTM NAD 83, ZONE 9.

REV	REVISION DESCRIPTION	DATE	BY	APPD	REV	REVISION DESCRIPTION	DATE	BY	APPD
1	ISSUED FOR REVIEW	06/08/24	AJ	AA					



**CLIENT**  
Pulse Societies Ltd.  
135 LAURIE AVE W, SUITE 100  
OTTAWA, ONTARIO K1P 5J2

**exp.**  
exp Services Inc.  
1-1-613-688-1899 | 1-613-225-7330  
3025 Queenwood Drive, Unit 100  
Ottawa, ON K2B 8H6  
Canada  
www.exp.com

• BUILDINGS • EARTH & ENVIRONMENT • ENERGY •  
• INDUSTRIAL • INFRASTRUCTURE • SUSTAINABILITY •

PROJECT No.	OTT-24006874-AG
SURVEY	AGV
DATE	27/07/2023
DRAWING No.	C200

**1136 GABRIEL STREET  
OTTAWA, ONTARIO.**

**SITE GRADING PLAN**