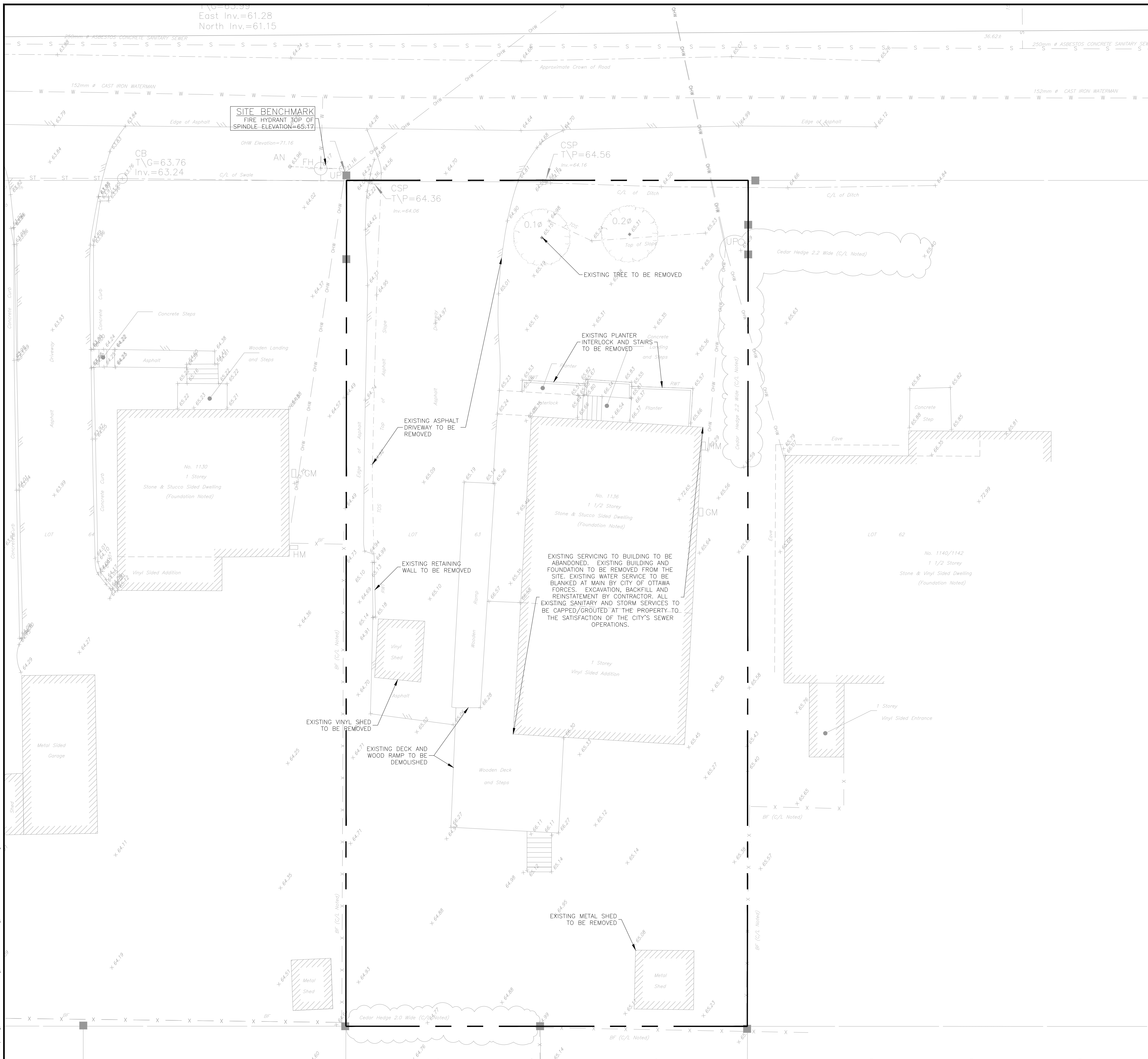
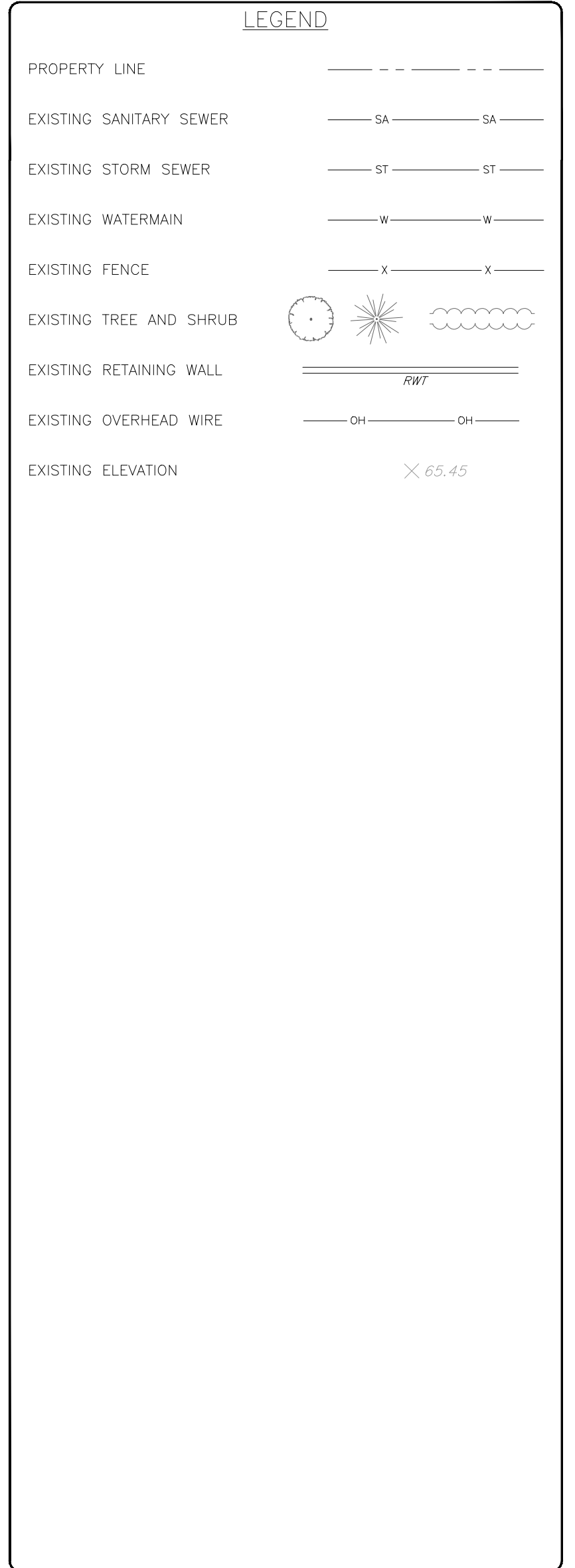
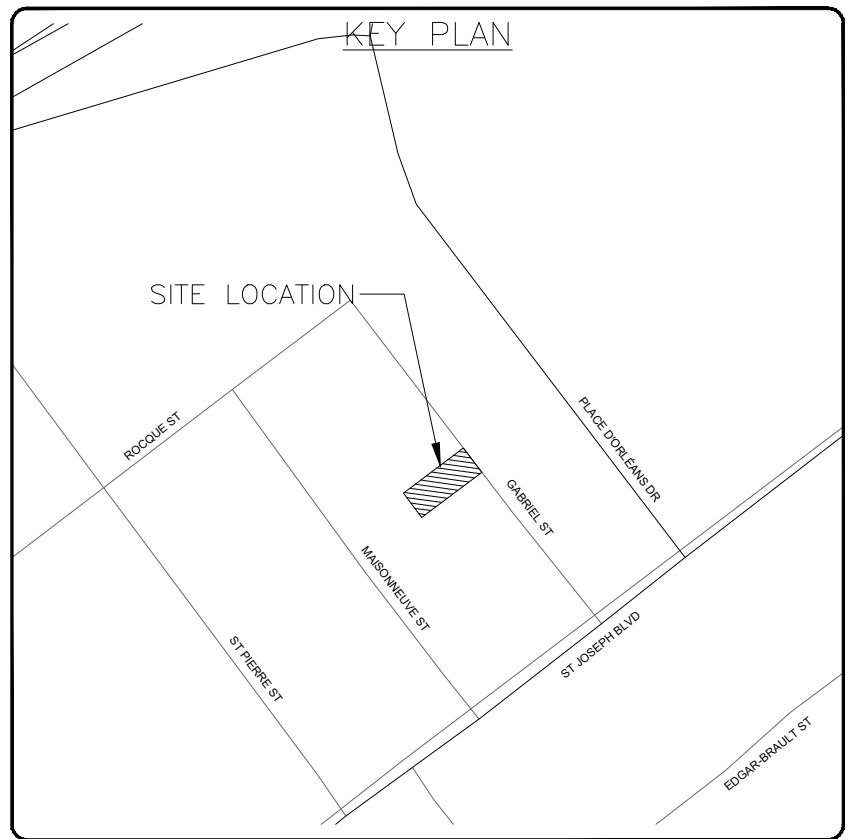


East Inv.=61.28  
North Inv.=61.15

NOTES:

1. THE LOCATION OF UTILITIES IS APPROXIMATE ONLY, AND THE EXACT LOCATION SHOULD BE DETERMINED BY CONSULTING THE MUNICIPAL AUTHORITIES AND UTILITY COMPANIES CONCERNED. THE CONTRACTOR IS RESPONSIBLE TO PROVIDE THE LOCATION AND STATUS OF UTILITIES AND SHALL BE RESPONSIBLE FOR ADEQUATE PROTECTION OF PLANT AND EQUIPMENT FROM DAMAGE UNTIL SUCH TIME AS THE SERVICE PROVIDER HAS CONFIRMED IN WRITING THE SERVICE IS ABANDONED AND CAN BE REMOVED. THE CONTRACTOR SHALL BE RESPONSIBLE FOR REPAIR OR REPLACEMENT OF ANY SERVICES OR UTILITIES DISTURBED DURING CONSTRUCTION, TO THE SATISFACTION OF THE AUTHORITY HAVING JURISDICTION.
2. THE CONTRACTOR SHALL VERIFY THE LOCATION AND ELEVATION OF EXISTING SERVICES PRIOR TO ANY CONSTRUCTION. THE CONTRACTOR SHALL CONFIRM LOCATIONS AND ELEVATIONS OF EXISTING SERVICES PRIOR TO COMMENCING CONSTRUCTION. ALL DIMENSIONS SHALL BE CHECKED AND VERIFIED IN THE FIELD BY THE CONTRACTOR PRIOR TO THE START OF CONSTRUCTION. ANY DISCREPANCIES, INTERPRETATIONS, CHANGES AND ADDITIONS TO THESE DRAWINGS MUST BE BROUGHT TO THE ATTENTION OF THE ENGINEER, WHEN NOTED AND BEFORE PROCEEDING WITH CONSTRUCTION WORKS. DO NOT CONTINUE CONSTRUCTION IN AREAS WHERE DISCREPANCIES APPEAR UNTIL SUCH DISCREPANCIES HAVE BEEN RESOLVED.
3. FOR ADDITIONAL PROJECT NOTES REFER TO DRAWING C001.

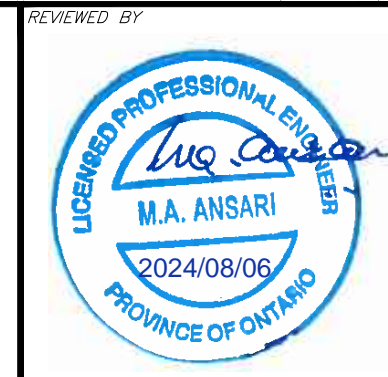
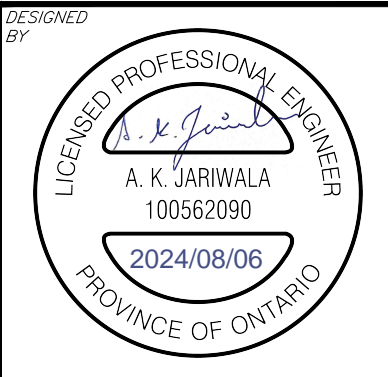
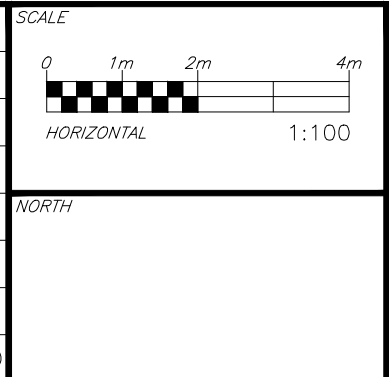


**CAUTION**  
THE POSITION OF ALL POLE LINES, CONDUITS, WATERMANS, SEWERS AND OTHER UNDERGROUND AND OVERGROUND UTILITIES AND STRUCTURES IS NOT NECESSARILY SHOWN ON THE CONTRACT DRAWINGS, AND WHERE SHOWN, THE ACCURACY OF THE POSITION OF SUCH UTILITIES AND STRUCTURES IS NOT GUARANTEED. BEFORE STARTING WORK, DETERMINE THE EXACT LOCATION OF ALL SUCH UTILITIES AND STRUCTURES AND ASSUME ALL LIABILITY FOR DAMAGE TO THEM.

**JOB BENCH MARK** JBM ▲  
FIRE HYDRANT TOP OF SPINDLE ELEVATION=65.17

**TOPOGRAPHIC INFORMATION**  
PART OF LOT 63, REGISTERED PLAN 96, CITY OF OTTAWA.  
TOPOGRAPHIC INFORMATION PROVIDED BY ANNIS, O'SULLIVAN, VOLLEBECK LTD. O.L.S (V-53820) SURVEY DATED JULY 27, 2023.  
SITE GRID SYSTEM MTM NAD 83, ZONE 9

REV	REVISION DESCRIPTION	DATE	BY	APPR
1	ISSUED FOR SPA	06/08/24	AJ	AA



CLIENT: Pulse Societies Ltd.  
135 LAURIE AVE W, SUITE 100  
OTTAWA, ONTARIO K1P 5J2

exp Services Inc.  
1-877-668-1899 | +1-613-225-7330  
205 Queen Street West, Unit 100  
Ottawa, ON K2B 8H6  
Canada  
www.exp.com

• BUILDINGS • EARTH & ENVIRONMENT • ENERGY •  
• INDUSTRIAL • INFRASTRUCTURE • SUSTAINABILITY •

DESIGNED BY	ZW
CHECKED BY	AJ
DATE	27/07/2023
PROJECT MANAGER	AA
APPROVED BY	AA

PROJECT: 1136 GABRIEL STREET  
OTTAWA, ONTARIO.

TITLE: EXISTING CONDITIONS AND REMOVALS PLAN

DRAWING No.: C000

PROJECT No.: OTT-24006874-AG  
SURVEY: ACV  
DATE: 27/07/2023  
DRAWING No.: C000

Reference: \\exp\projects\1136-24006874-AG\000\mxd\1136-24006874-AG-000.dwg - gpatel - cad.dwg  
 User: gpatel/2/2/24 3:10:23 PM  
 Last Plot: 8/7/2024 8:11:27 PM  
 Referenced: Region-1136-24006874-AG.dwg  
 Referenced: Site Plan.dwg  
 Sheet: A1 Title.dwg  
 Sheet: East-Station\_Xref.dwg