

**SURVEYOR'S REAL PROPERTY REPORT**  
**PART 1** Plan of  
**LOTS 457, 458, 459, 460, 466, 467 AND**  
**LOTS 470 TO 482 (INCLUSIVE) AND**  
**LOTS 487 TO 503 (INCLUSIVE) AND**  
**LOTS 506 TO 522 (INCLUSIVE) AND**  
**LOTS 529 TO 552 (INCLUSIVE) AND**  
**PART OF LOTS 461, 462, 463, 464, 465**  
**AND PART OF AVENUE J CLOSED BY**  
**BY-LAW 193-50 (INST. OT73267) AND**  
**BY-LAW 6-67 (INST. OT74046) AND**  
**PART OF AVENUE K CLOSED BY**  
**BY-LAW 127-50 (INST. OT72335)**  
**REGISTERED PLAN 320**  
**CITY OF OTTAWA**  
 Surveyed by Annis, O'Sullivan, Vollebek Ltd.

Scale 1 : 300  
 0 3 6 9 12 Metres

**Metric**  
 DISTANCES SHOWN ON THIS PLAN ARE IN METRES AND  
 CAN BE CONVERTED TO FEET BY DIVIDING BY 0.3048

**Surveyor's Certificate**  
 I, CERTIFY THAT:  
 1. This survey and plan are correct and in accordance with the Surveys  
 Act, the Surveyors Act and the Land Titles Act and the regulations  
 thereunder.  
 2. This survey was completed on the 8th day of January, 2020.

DATE  
 2020-01-08  
 E. M. Sullivan  
 Ontario Land Surveyor

**PART 2**  
 THIS PLAN MUST BE READ IN CONJUNCTION WITH  
 SURVEY REPORT DATED 2020-01-08

ANIS, O'SULLIVAN, VOLLEBEK LTD. acts as  
 Colorado Bridgeport,  
 and other related parties, permission to use original, signed, sealed  
 copies of the Surveyor's Real Property Report in transactions involving The Client.

**Notes & Legend**

- D- Survey Monument Placed
- SMB Survey Monument Found
- SSB Staked Iron Bar
- IB Iron Bar
- CC Cut Cross
- CP Concrete Pin
- WTT Witness
- Meas. Measured
- (AOC) Annis, O'Sullivan, Vollebek Ltd.
- (PI) Registered Plan 320
- (P2) Plan R-237
- (P3) (AOC) Plan January 26, 1988
- (P4) Plan R-13135
- GM Gas Meter
- HM Hydrom Meter
- BS Bolt
- SS Sign
- UR Utility Pole
- AR Archer
- LS Light Standard
- PH Fire Hydrant
- OW Overhead Wires
- CLF Chain Link Fence
- PW Post and Wire
- BT Bell Terminal Box
- CL Cementline
- RW Retaining Wall

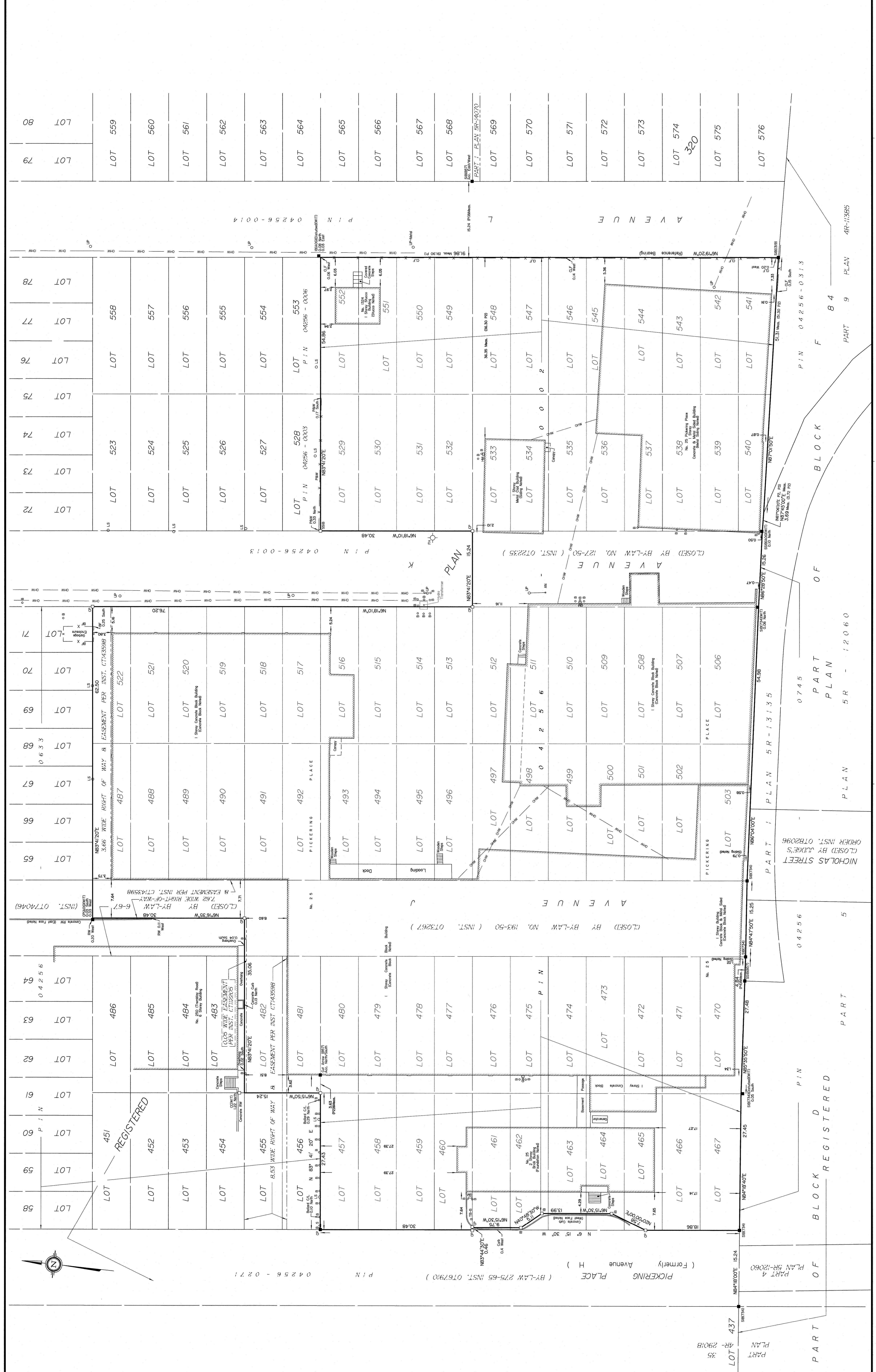
All Bearings, Distances and Building Use are per (AOC) Plan dated  
 January 26, 1988 unless otherwise noted.

Bearings are given from Westward limit of Avenue L shown to  
 be the true bearing. The true bearing is the bearing referred to the  
 Central Meridian of MTN Zone 9 (17°30' West  
 Longitude) (NAD-83) (original).

ASSOCIATION OF ONTARIO  
 LAND SURVEYORS  
 PLAN SUBMISSION FORM  
 2/14/17

THE PLAN IS VALID UNLESS  
 A COPY ISSUED BY THE SURVEYOR  
 IS ACCOMPANIED BY THE  
 REGISTRATION (L20) (SECTION 29 (2))

ANIS, O'SULLIVAN, VOLLEBEK LTD.  
 14 Appena, One KEE 755  
 Phone: (613) 271-8800 / Fax: (613) 727-1079  
 Land Surveyors Lic. No. 10272-B-1, L10, L5, 582, 583, 580, 581, 584, 585



PICKERING PLACE (Formerly) Avenue H )  
 ( BY-LAW 275-65 INST. 076790 )  
 P I N 0 4 2 5 6 - 0 2 7 1

LOT 451 REGISTERED  
 LOT 452  
 LOT 453  
 LOT 454  
 LOT 455 8.53 WIDE RIGHT OF WAY  
 LOT 456 41° 20' E  
 LOT 457  
 LOT 458  
 LOT 459  
 LOT 460  
 LOT 461  
 LOT 462  
 LOT 463  
 LOT 464  
 LOT 465  
 LOT 466  
 LOT 467  
 LOT 468  
 LOT 469  
 LOT 470  
 LOT 471  
 LOT 472  
 LOT 473  
 LOT 474  
 LOT 475  
 LOT 476  
 LOT 477  
 LOT 478  
 LOT 479  
 LOT 480  
 LOT 481  
 LOT 482  
 LOT 483  
 LOT 484  
 LOT 485  
 LOT 486  
 LOT 487  
 LOT 488  
 LOT 489  
 LOT 490  
 LOT 491  
 LOT 492  
 LOT 493  
 LOT 494  
 LOT 495  
 LOT 496  
 LOT 497  
 LOT 498  
 LOT 499  
 LOT 500  
 LOT 501  
 LOT 502  
 LOT 503  
 LOT 504  
 LOT 505  
 LOT 506  
 LOT 507  
 LOT 508  
 LOT 509  
 LOT 510  
 LOT 511  
 LOT 512  
 LOT 513  
 LOT 514  
 LOT 515  
 LOT 516  
 LOT 517  
 LOT 518  
 LOT 519  
 LOT 520  
 LOT 521  
 LOT 522  
 LOT 523  
 LOT 524  
 LOT 525  
 LOT 526  
 LOT 527  
 LOT 528  
 LOT 529  
 LOT 530  
 LOT 531  
 LOT 532  
 LOT 533  
 LOT 534  
 LOT 535  
 LOT 536  
 LOT 537  
 LOT 538  
 LOT 539  
 LOT 540  
 LOT 541  
 LOT 542  
 LOT 543  
 LOT 544  
 LOT 545  
 LOT 546  
 LOT 547  
 LOT 548  
 LOT 549  
 LOT 550  
 LOT 551  
 LOT 552  
 LOT 553  
 LOT 554  
 LOT 555  
 LOT 556  
 LOT 557  
 LOT 558  
 LOT 559  
 LOT 560  
 LOT 561  
 LOT 562  
 LOT 563  
 LOT 564  
 LOT 565  
 LOT 566  
 LOT 567  
 LOT 568  
 LOT 569  
 LOT 570  
 LOT 571  
 LOT 572  
 LOT 573  
 LOT 574  
 LOT 575  
 LOT 576

AVENUE J  
 AVENUE K  
 AVENUE L

PICKERING PLACE  
 NICHOLAS STREET  
 PART 1 PLAN 5R-1335  
 PART 2 PLAN 5R-1335  
 PART 3 PLAN 5R-1335  
 PART 4 PLAN 5R-1335  
 PART 5 PLAN 5R-1335  
 PART 6 PLAN 5R-1335  
 PART 7 PLAN 5R-1335  
 PART 8 PLAN 5R-1335  
 PART 9 PLAN 5R-1335  
 PART 10 PLAN 5R-1335  
 PART 11 PLAN 5R-1335  
 PART 12 PLAN 5R-1335  
 PART 13 PLAN 5R-1335  
 PART 14 PLAN 5R-1335  
 PART 15 PLAN 5R-1335  
 PART 16 PLAN 5R-1335  
 PART 17 PLAN 5R-1335  
 PART 18 PLAN 5R-1335  
 PART 19 PLAN 5R-1335  
 PART 20 PLAN 5R-1335  
 PART 21 PLAN 5R-1335  
 PART 22 PLAN 5R-1335  
 PART 23 PLAN 5R-1335  
 PART 24 PLAN 5R-1335  
 PART 25 PLAN 5R-1335  
 PART 26 PLAN 5R-1335  
 PART 27 PLAN 5R-1335  
 PART 28 PLAN 5R-1335  
 PART 29 PLAN 5R-1335  
 PART 30 PLAN 5R-1335  
 PART 31 PLAN 5R-1335  
 PART 32 PLAN 5R-1335  
 PART 33 PLAN 5R-1335  
 PART 34 PLAN 5R-1335  
 PART 35 PLAN 5R-1335  
 PART 36 PLAN 5R-1335  
 PART 37 PLAN 5R-1335  
 PART 38 PLAN 5R-1335  
 PART 39 PLAN 5R-1335  
 PART 40 PLAN 5R-1335  
 PART 41 PLAN 5R-1335  
 PART 42 PLAN 5R-1335  
 PART 43 PLAN 5R-1335  
 PART 44 PLAN 5R-1335  
 PART 45 PLAN 5R-1335  
 PART 46 PLAN 5R-1335  
 PART 47 PLAN 5R-1335  
 PART 48 PLAN 5R-1335  
 PART 49 PLAN 5R-1335  
 PART 50 PLAN 5R-1335  
 PART 51 PLAN 5R-1335  
 PART 52 PLAN 5R-1335  
 PART 53 PLAN 5R-1335  
 PART 54 PLAN 5R-1335  
 PART 55 PLAN 5R-1335  
 PART 56 PLAN 5R-1335  
 PART 57 PLAN 5R-1335  
 PART 58 PLAN 5R-1335  
 PART 59 PLAN 5R-1335  
 PART 60 PLAN 5R-1335  
 PART 61 PLAN 5R-1335  
 PART 62 PLAN 5R-1335  
 PART 63 PLAN 5R-1335  
 PART 64 PLAN 5R-1335  
 PART 65 PLAN 5R-1335  
 PART 66 PLAN 5R-1335  
 PART 67 PLAN 5R-1335  
 PART 68 PLAN 5R-1335  
 PART 69 PLAN 5R-1335  
 PART 70 PLAN 5R-1335  
 PART 71 PLAN 5R-1335  
 PART 72 PLAN 5R-1335  
 PART 73 PLAN 5R-1335  
 PART 74 PLAN 5R-1335  
 PART 75 PLAN 5R-1335  
 PART 76 PLAN 5R-1335  
 PART 77 PLAN 5R-1335  
 PART 78 PLAN 5R-1335  
 PART 79 PLAN 5R-1335  
 PART 80 PLAN 5R-1335