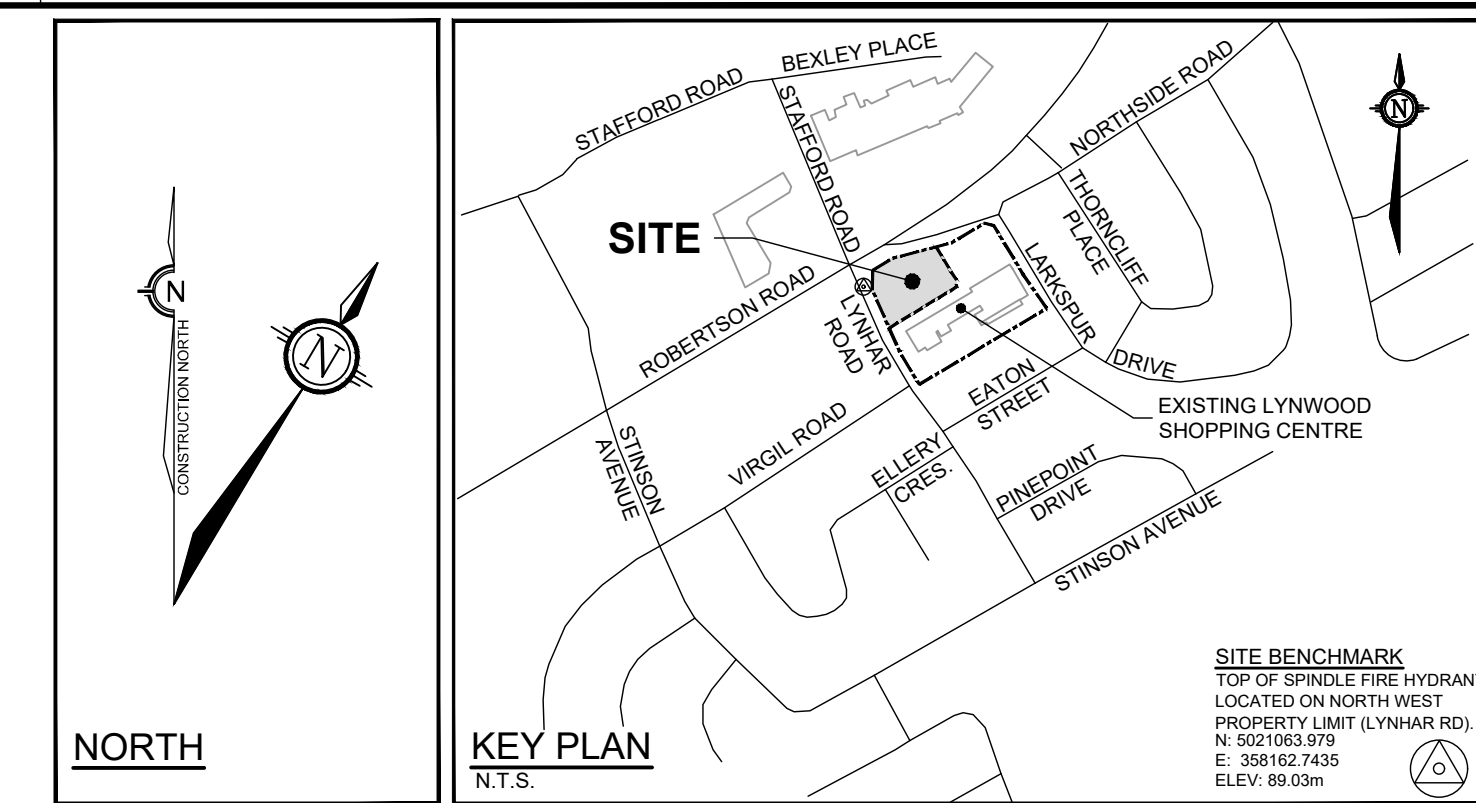


AREA ID	ZURN SPECIFICATION	NOTCHES	POST DEVELOPMENT ZURN ROOF DRAIN CONTROL PARAMETERS					
			12 - YEAR EVENT			1:100 - YEAR EVENT		
			HEAD(m)	Q(m³)	VOL(m³)	HEAD(m)	Q(m³)	VOL(m³)
RD1	ZCF121-1W-X2-2-105-10-77	4	0.068	3.06	1.15	0.111	4.95	4.84
RD2	ZCF121-1W-X2-2-105-10-77	4	0.068	3.06	1.15	0.111	4.95	4.84
RD3	ZCF121-1W-X2-2-105-10-77	4	0.068	3.06	1.15	0.111	4.95	4.84
ROOF SUBTOTAL			0.068	9.19	3.45	0.111	14.86	14.51

WATERMAIN TABLE - LYNWOOD RETAIL PLAZA (A)			
150mmØ WATER SERVICE (MIN COVER = 2.4m)			
STATION	SURFACE ELEVATION	TOP OF WM ELEVATION	DESCRIPTION
0+000	87.55	85.75	CONNECTION TO EXISTING 200mmØ WATERMAIN
0+001.5	87.63	85.46	CROSSING OVER EXISTING 375mmØ SAN SEWER PROVIDE 0.25m CLEARANCE AS PER W25.2 EX SAN INV. @ CROSSING =+85.66 EX SAN OVB. @ CROSSING =+85.06
0+002.6	87.71	85.31	VALVE & VALVE BOX
0+008.7	87.74	85.34	45° BEND
0+011.7	87.75	85.35	45° BEND
0+020	88.22	85.82	WM CAP 1.0m OFF BUILDING FACE
0+025.1	88.40	86.00	WM CAP 1.0m OFF BUILDING FACE

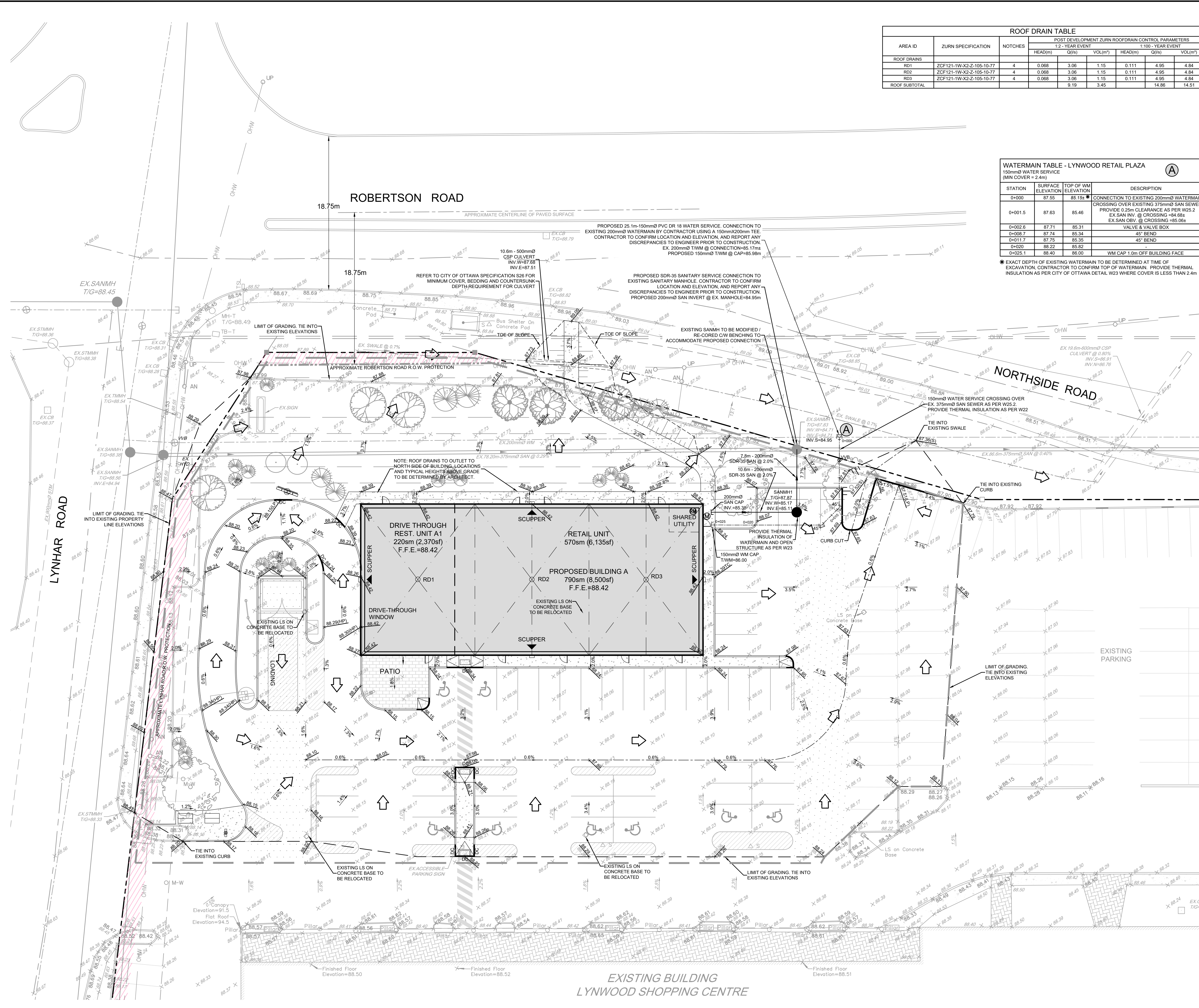


LEGEND

- SITE BOUNDARY
- LIMIT OF SITE PLAN CONTROL APPLICATION
- APPROXIMATE ROBERTSON ROAD R.O.W. PROTECTION
- PROPOSED ELEVATION
- EXISTING FINISHED FLOOR ELEVATION
- PROPOSED GRADE AND DIRECTION
- PROPOSED TERRACING MAXIMUM 3:1 SLOPE
- EXISTING TOPOGRAPHIC SURVEY ELEVATION
- EXISTING SURVEY TOP OF CURB ELEVATION
- PROPOSED LIMIT OF GRADING
- PROPOSED SANITARY MAINTENANCE HOLE
- PROPOSED SANITARY SERVICE C/W CAP
- PROPOSED WATER SERVICE C/W CAP
- PROPOSED VALVE & VALVE BOX LOCATION
- PROPOSED ROOF DRAIN
- PROPOSED BIKE STALL & AISLE (REFER TO LANDSCAPE PLANS)
- EXISTING CONCRETE
- PROPOSED CONCRETE
- PROPOSED PAVERS (REFER TO LANDSCAPE PLANS)
- PROPOSED RIGHT OF WAY PROTECTION (TO BE CONFIRMED BY LEGAL SURVEYOR)
- PROPOSED TREE LOCATION
- OVERLAND DRAINAGE DIRECTION

PAVEMENT STRUCTURE:
REFER TO GEOTECHNICAL REPORT FOR SUBSURFACE CONDITIONS AND CONSTRUCTION RECOMMENDATIONS

- CAR ONLY PARKING AREAS: 50mm H/L OR SUPERPAVE 12.5, 150mm GRAN 'A', 300mm GRAN 'B' TYPE II
- ACCESS LANES AND HEAVY DUTY TRUCK PARKING: 40mm H/L OR SUPERPAVE 12.5, 50mm H/L OR SUPERPAVE 19.0, 150mm GRAN 'A', 450mm GRAN 'B' TYPE II
- *GRANULAR BASE TO BE COMPACTED TO 99% STANDARD PROCTOR DRY DENSITY.

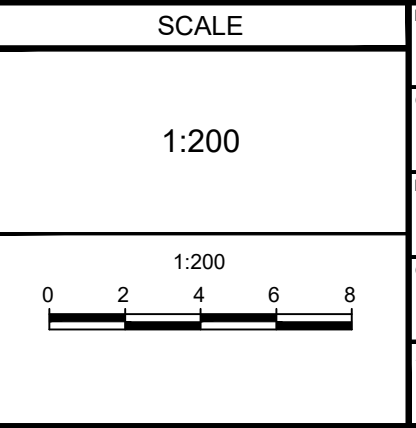


REFER TO 106134-ND FOR ADDITIONAL NOTES AND DETAILS

NOTE: THE POSITION OF ALL POLE LINES, CONDUITS, WATERMANS, SEWERS AND OTHER UNDERGROUND AND OVERGROUND UTILITIES AND STRUCTURES IS NOT NECESSARILY SHOWN ON THE CONTRACT DRAWINGS, AND WHERE SHOWN, THE ACCURACY OF THE POSITION OF SUCH UTILITIES AND STRUCTURES IS NOT GUARANTEED. BEFORE STARTING WORK, DETERMINE THE EXACT LOCATION OF ALL SUCH UTILITIES AND STRUCTURES AND ASSUME ALL LIABILITY FOR DAMAGE TO THEM.

**PRELIMINARY
NOT FOR
CONSTRUCTION**

No.	REVISION	DATE	BY	No.	REVISION	DATE	BY
8.	ISSUED FOR COORDINATION	MARCH 5/24	SAZ	8.	ISSUED FOR COORDINATION	MARCH 5/24	SAZ
7.	ISSUED FOR COORDINATION	JAN 25/24	SAZ	7.	ISSUED FOR COORDINATION	JAN 25/24	SAZ
6.	REVISED AS PER CITY OF OTTAWA COMMENTS	NOV 17/23	SAZ	6.	REVISED AS PER CITY OF OTTAWA COMMENTS	NOV 17/23	SAZ
5.	ISSUED FOR COORDINATION	OCT 25/23	SAZ	5.	ISSUED FOR COORDINATION	OCT 25/23	SAZ
4.	ISSUED FOR COORDINATION	OCT 16/23	SAZ	4.	ISSUED FOR COORDINATION	OCT 16/23	SAZ
3.	REVISED SITE PLAN	OCT 12/23	SAZ	3.	REVISED SITE PLAN	OCT 12/23	SAZ
2.	ISSUED WITH SITE PLAN APPLICATION	MAR 3/23	SAZ	2.	ISSUED WITH SITE PLAN APPLICATION	MAR 3/23	SAZ
1.	ISSUED FOR COORDINATION	FEB 24/23	SAZ	1.	ISSUED FOR COORDINATION	FEB 24/23	SAZ



FOR REVIEW ONLY

SAZ
MSP
MTM
SAZ
MSP

NOVATECH
Engineers, Planners & Landscape Architects
Suite 200, 240 Michael Cowland Drive
Ottawa, Ontario, Canada K2M 1P6
Telephone: (613) 254-9643
Facsimile: (613) 254-5867
Website: www.novatech-eng.com

CITY OF OTTAWA
1826 ROBERTSON ROAD
LYNWOOD RETAIL PLAZA

DRAWING NAME: GRADING & SERVICING PLAN

PROJECT No.: 106134-00
REV # 11
DRAWING No.: 106134-GS

D07-12-23-002