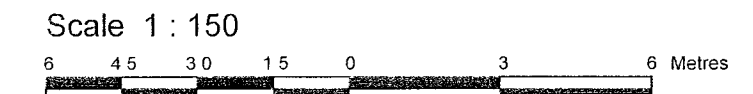


ROOSEVELT AVENUE (BY-LAW CR48636)
 (Formerly Victoria Avenue)
 P/N 040:7 - 0:31



Metric
 DISTANCES AND COORDINATES SHOWN ON THIS PLAN ARE IN METRES AND CAN BE CONVERTED TO FEET BY DIVIDING BY 0.3048

I REQUIRE THIS PLAN TO BE DEPOSITED UNDER THE LAND TITLES ACT.
 DATE: Sept 30/22
 V. Andrew Shelp
 ONTARIO LAND SURVEYOR

PLAN 4R-34985
 RECEIVED AND DEPOSITED
 DATE: OCTOBER 20, 2022
 V. Andrew Shelp
 REPRESENTATIVE FOR
 LAND REGISTRAR FOR THE
 LAND TITLES DIVISION OF
 OTTAWA-CARLETON NO. 4.

SCHEDULE			
PART	LOT	PLAN	PIN
1	5, 6 AND 8	114	ALL OF 03971-0469

PLAN OF SURVEY OF
LOTS 5, 6 and 8
REGISTERED PLAN 114
CITY OF OTTAWA
 Surveyed by Annis, O'Sullivan, Vollebek Ltd.

Surveyor's Certificate
 I CERTIFY THAT:
 1. This survey and plan are correct and in accordance with the Surveys Act, the Surveyors Act and the Land Titles Act and the regulations made under them.
 2. The survey was completed on the 23rd day of March, 2022.
 M. G. [Signature]
 Date: [Signature]
 V. Andrew Shelp
 Ontario Land Surveyor

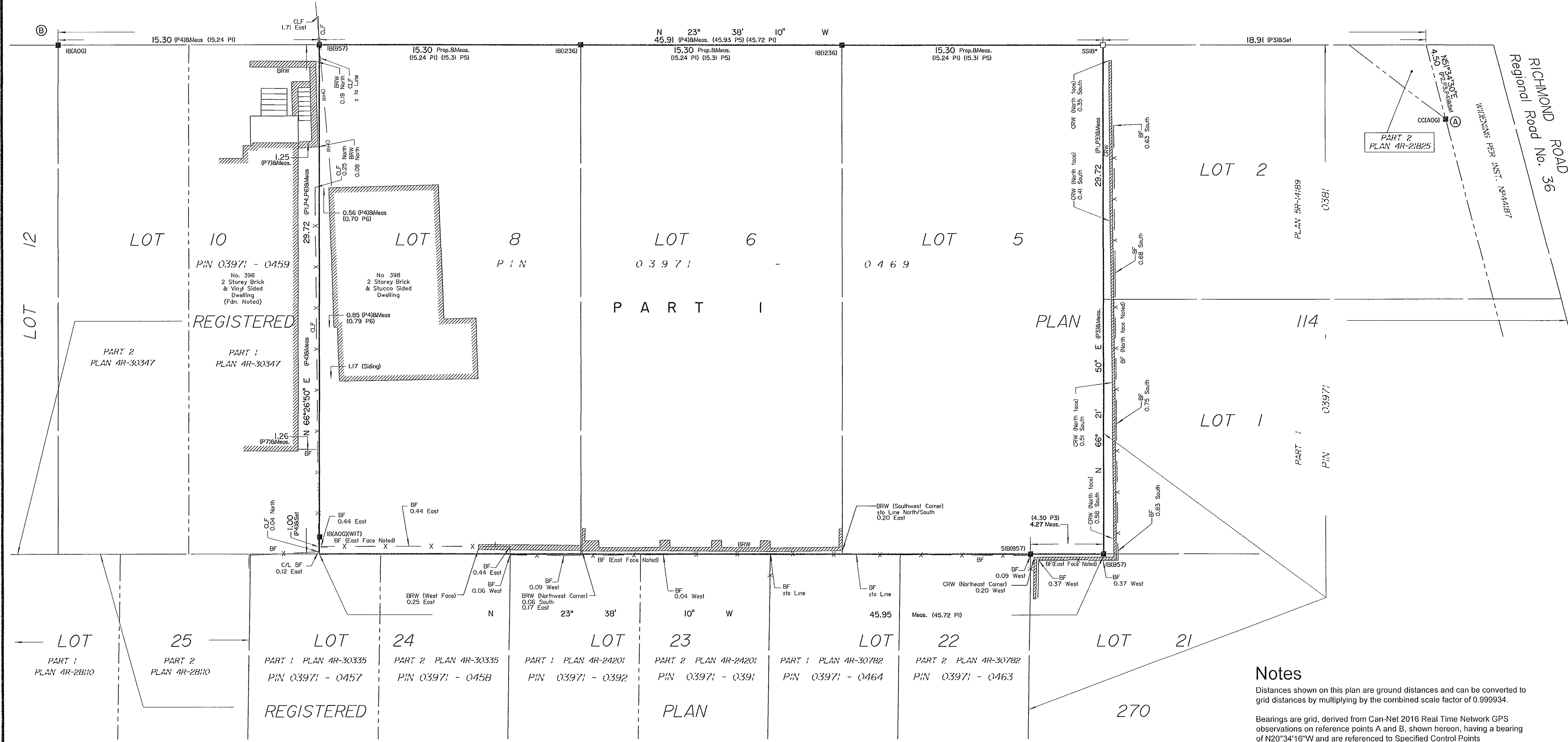
Legend

□	Denotes	Survey Monument Planted
■	"	Survey Monument Found
SIB	"	Standard Iron Bar
SSIB	"	Short Standard Iron Bar
IB	"	Iron Bar
CC	"	Cut Cross
CP	"	Concrete Pin
(WIT)	"	Witness
Meas.	"	Measured
Prop.	"	Proportioned
(AOG)	"	Annis, O'Sullivan, Vollebek Ltd
(P1)	"	Registered Plan 114
(P2)	"	Plan 4R-21825
(P3)	"	Plan 5R-14189
(P4)	"	Plan 4R-30347
(P5)	"	(1236) Plan April 15, 1998
(P6)	"	(647) Plan December 19, 1975
(P7)	"	(AOG) Plan January 29, 2018
C/L	"	Centreline
CLF	"	Chain Link Fence
BF	"	Board Fence
BRW	"	Brick Retaining Wall
CRW	"	Concrete Retaining Wall
WRW	"	Wooden Retaining Wall
Fdn.	"	Foundation

Notes
 Distances shown on this plan are ground distances and can be converted to grid distances by multiplying by the combined scale factor of 0.999934.
 Bearings are grid, derived from Can-Net 2016 Real Time Network GPS observations on reference points A and B, shown hereon, having a bearing of N20°34'16"W and are referenced to Specified Control Points 01919680005 and 01919680105, MTM Zone 9 (76°30' West Longitude) NAD-83 (original).
 For bearing comparisons, a rotation of 0°45'40" counter-clockwise was applied to bearings on plans P2 and P3.
 Coordinates are derived from Can-Net 2016 Real Time Network GPS observations referenced to Specified Control Points 01919680005 and 01919680105, MTM Zone 9 (76°30' West Longitude) NAD-83 (original).
 Coordinate values are to urban accuracy in accordance with O. Reg 216/10.

. 01919680005	Northing	5027191.26	Easting	361496.76
. 01919680105	Northing	5024915.16	Easting	373971.65
. Point A	Northing	5028117.73	Easting	362962.69
. Point B	Northing	5028193.92	Easting	362934.10

Caution: Coordinates cannot, in themselves, be used to re-establish corners or boundaries shown on this plan.



ANNIS, O'SULLIVAN, VOLLEBEK LTD.
 14 Concourse Gate, Suite 500
 Nepean, Ont. K2E 7S6
 Phone (613) 727-0850 / Fax (613) 727-1079
 Email: Nepean@aosvltd.com
 Ontario Land Surveyors
 Job No. 22624-22 ML Devco Lts 5 6 8 PL 114 R F