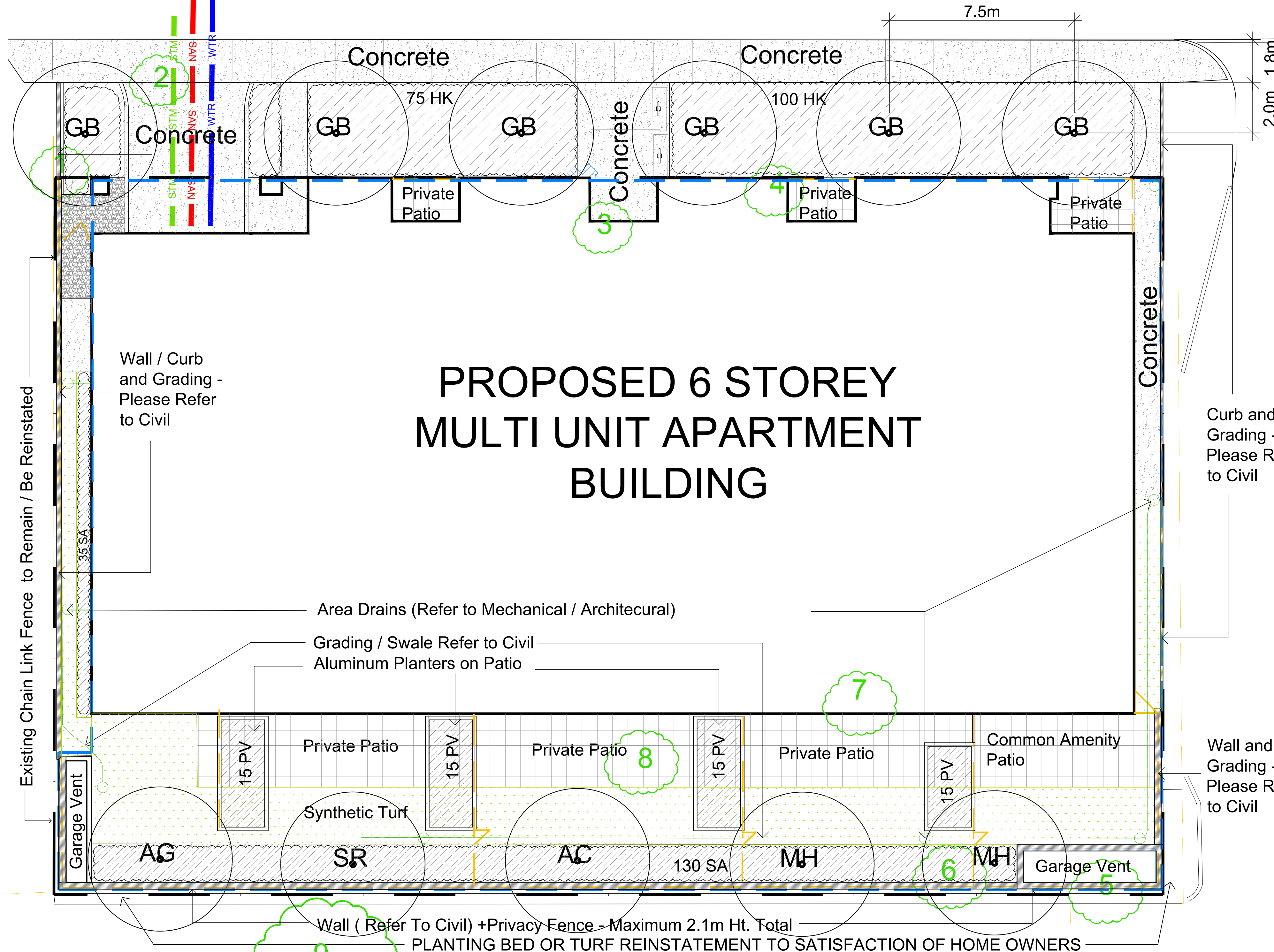


# ROOSEVELT AVENUE

CONCRETE AND PLANTING DETAILS WITHIN THE CITY ROW TO MEET OR EXCEED CITY STANDARD DETAILS SC2 Monolithic Curb and Sidewalk, L3 Planting Pit, L4 Shrub Bed, L5 Continuous Planting Bed AS REQUESTED BY THE CITY OF OTTAWA



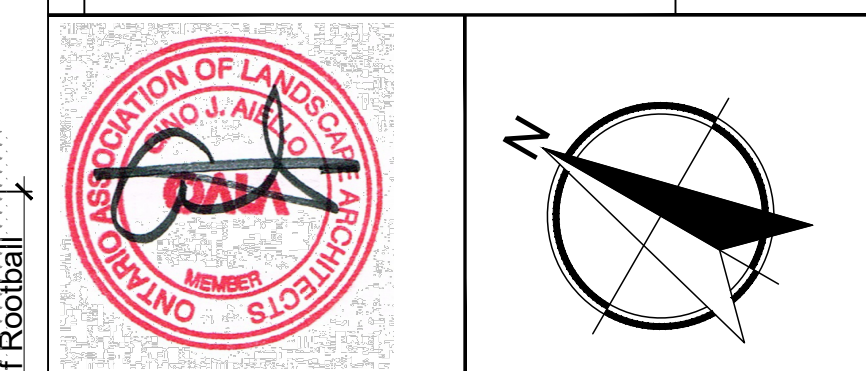
Drawing Remains the Property of/Copyright Reserved by GJA INC. Do Not Use or Reproduce Without Approval of GJA INC.  
 NOT To Be Used For Construction Unless indicated by Revision: "FOR LANDSCAPE CONSTRUCTION"  
 Contractor is Responsible for Verification of Site Locations of all Utilities. Report any Discrepancies Between Site and Drawing Immediately to GJA INC. Do NOT Proceed Until Clarified.

PLANTING MIX TO BE APPROVED BY LANDSCAPE ARCHITECT | PLANT MATERIAL TO MEET CNLA STANDARDS/BE APPROVED BY LANDSCAPE ARCHITECT PRIOR TO PLANTING | ALL MATERIALS & WORK TO BE MAINTAINED UNTIL FINAL ACCEPTANCE & INCLUDE 1 YEAR WARRANTY FROM DATE OF FINAL ACCEPTANCE | PROVIDE WATERING OF ALL PLANT MATERIAL AS REQUIRED FOR PROPER ESTABLISHMENT UNTIL END OF WARRANTY PERIOD | REFER TO CIVIL ENGINEER'S DRAWING FOR ELEVATIONS / GRADING |  
 The Landscape Plan is to be read in conjunction with the grading, servicing, site and survey plan | Bare root material to be planted in season only | All plant material locations to be staked on site by the landscape contractor and checked by the landscape architect prior to planting | All trees to be preserved on or directly adjacent to the site will be protected | Plant material are to be installed a minimum of: 3.0m away from any part of any hydro transformer, 3.0m corridor between a fire hydrant and the curb, a 2.5m radius beside or behind a fire hydrant, 2.0m from any servicing/utility line or structure |

- ### LANDSCAPE PLAN LEGEND
- Proposed Pedestrian Pavement
  - Proposed Concrete Pavement
  - Proposed Deciduous Tree
  - Proposed Planting Bed
  - Proposed Riverwash Stone On Filter Cloth
  - Proposed Custom Aluminum Privacy Screen
- ### BELOW GRADE SERVICES REFER TO CIVIL /CUP
- U/G Water Service
  - U/G Storm Service
  - U/G Sanitary Service
  - FD Siamese Connection
- REFER TO TCR BY IFS

Existing Tree - Refer TO TCR by IFS for Details/Actions

10	PHASE 3 PRE CONSULT RESPONSE	2024.07.29
9	PHASE 3 PRE CONSULT RESPONSE	2024.06.18
8	REVISED SITE/GROUND FLOOR PLAN	2024.05.01
7	CITY ROW DETAILS ADDED	JUNE 29 2022
6	FOR BUILDING PERMIT	JUNE 10 2022
5	SITE PLAN CONTROL SUBMISSION 4	MAY 12 2022
4	FOR TENDER REVIEW	APRIL 27 2022
3	SITE PLAN CONTROL SUBMISSION 3	MARCH 31 2022
2	SITE PLAN CONTROL SUBMISSION 2	JANUARY 17 2022
1	SITE PLAN CONTROL SUBMISSION 1	DECEMBER 10 2021
0	REVIEW/COORDINATION	NOVEMBER 2021

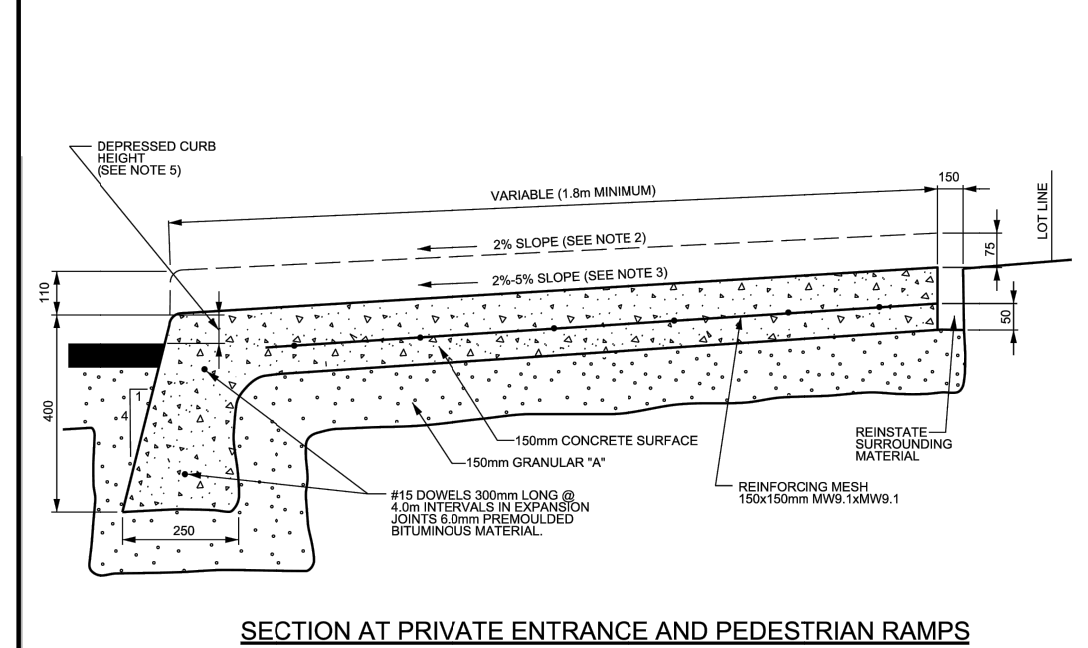
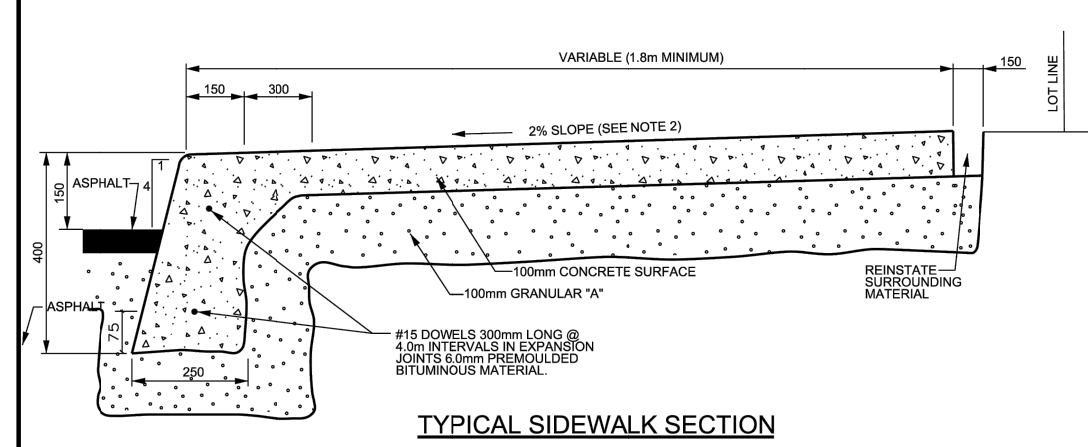


Property Owner **ML Westboro Inc.**  
 C/O ML DEVCO INC.  
 651 Churchhill Avenue North Ottawa K1Z 5G2 Tel: 613-686-6319

**GJA INC.**  
 GJALA.COM | 613.286.5130 | GJNO@GJALA.COM  
 115 DOBRYNIA ROAD UNIT # 8 | OTTAWA, ONTARIO | K1T 0C2

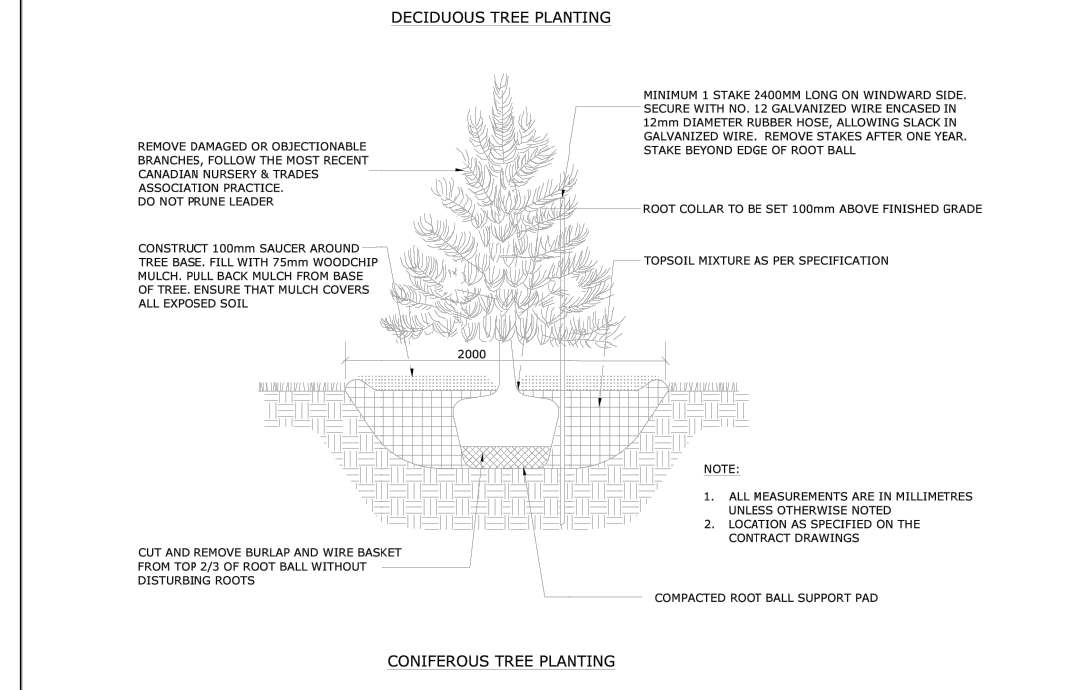
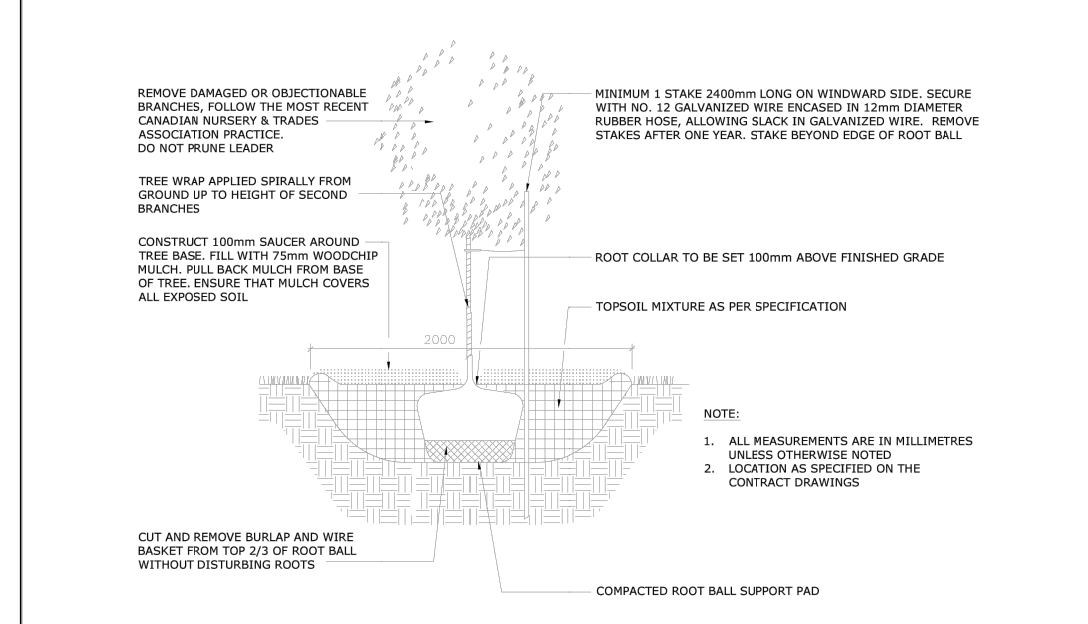
**MULTI UNIT RESIDENTIAL CONDOMINIUM**  
 398 - 406 ROOSEVELT AVENUE

**Landscape Plan**  
 Scale: 1:100 Sheet Number **L1**  
 City of Ottawa Dwg - 18647

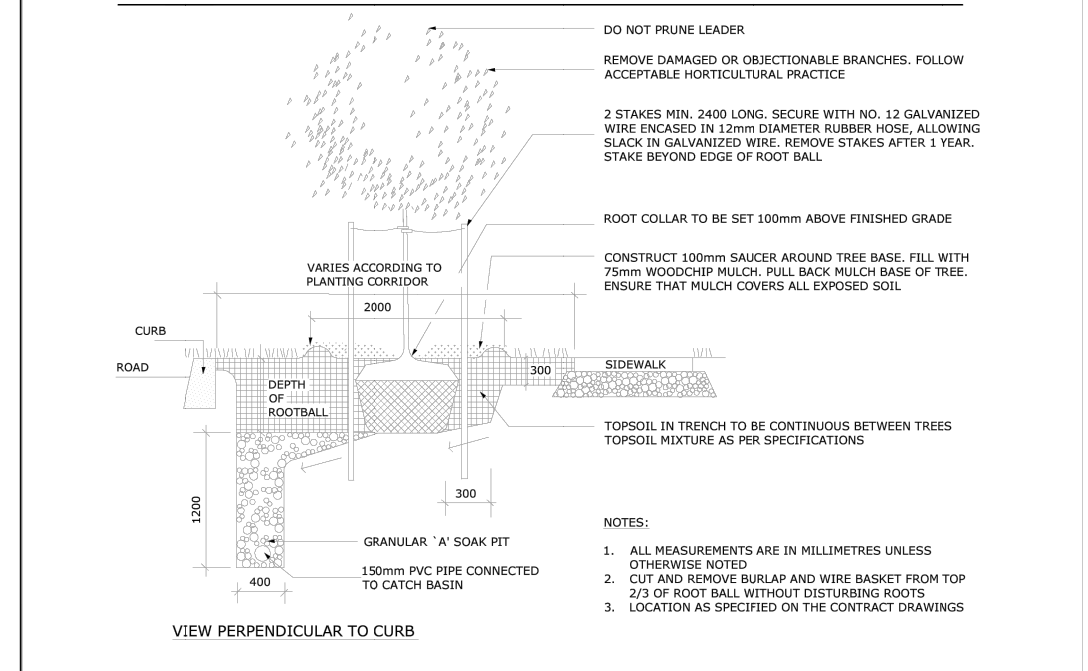
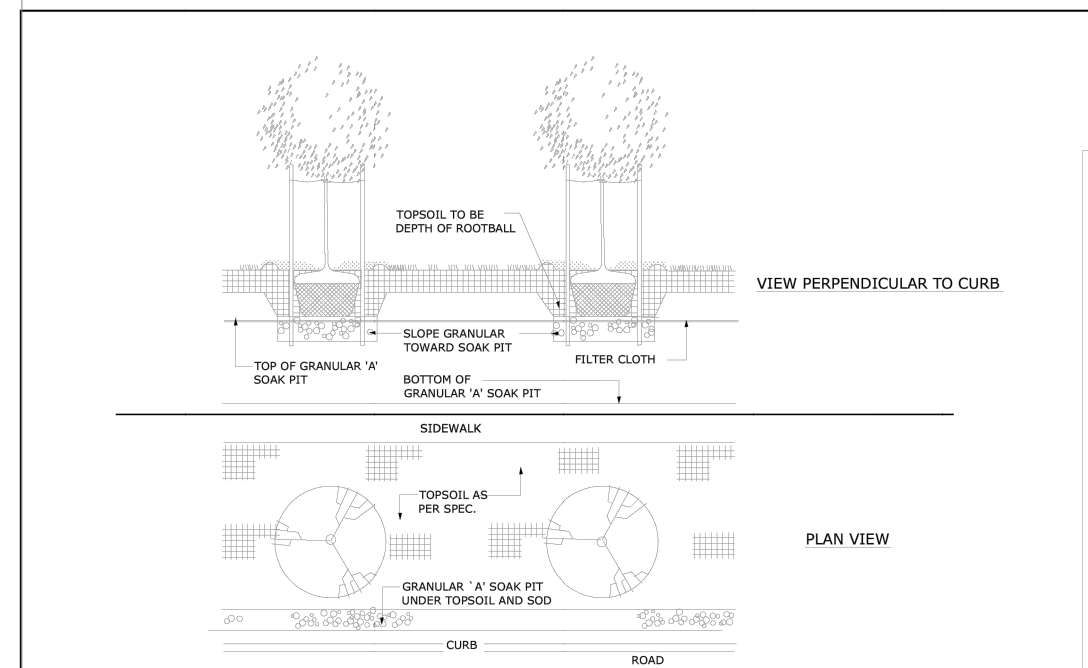


NOTES:  
 1. ALL DIMENSIONS ARE IN MILLIMETRES UNLESS SHOWN OTHERWISE.  
 2. THE MAXIMUM SLOPE IS NOT TO EXCEED 2%.  
 3. FOR CURB RAMPS, SLOPE OF 2% TO 5%, MAXIMUM 8%.  
 4. EXPANSION AND DUMMY JOINTS AS PER SCS.  
 5. DEPRESSIONED CURB HEIGHT - FOR PEDESTRIAN CURB RAMPS 0 TO 6 mm AND FOR PRIVATE ENTRANCES 0 TO 25mm.

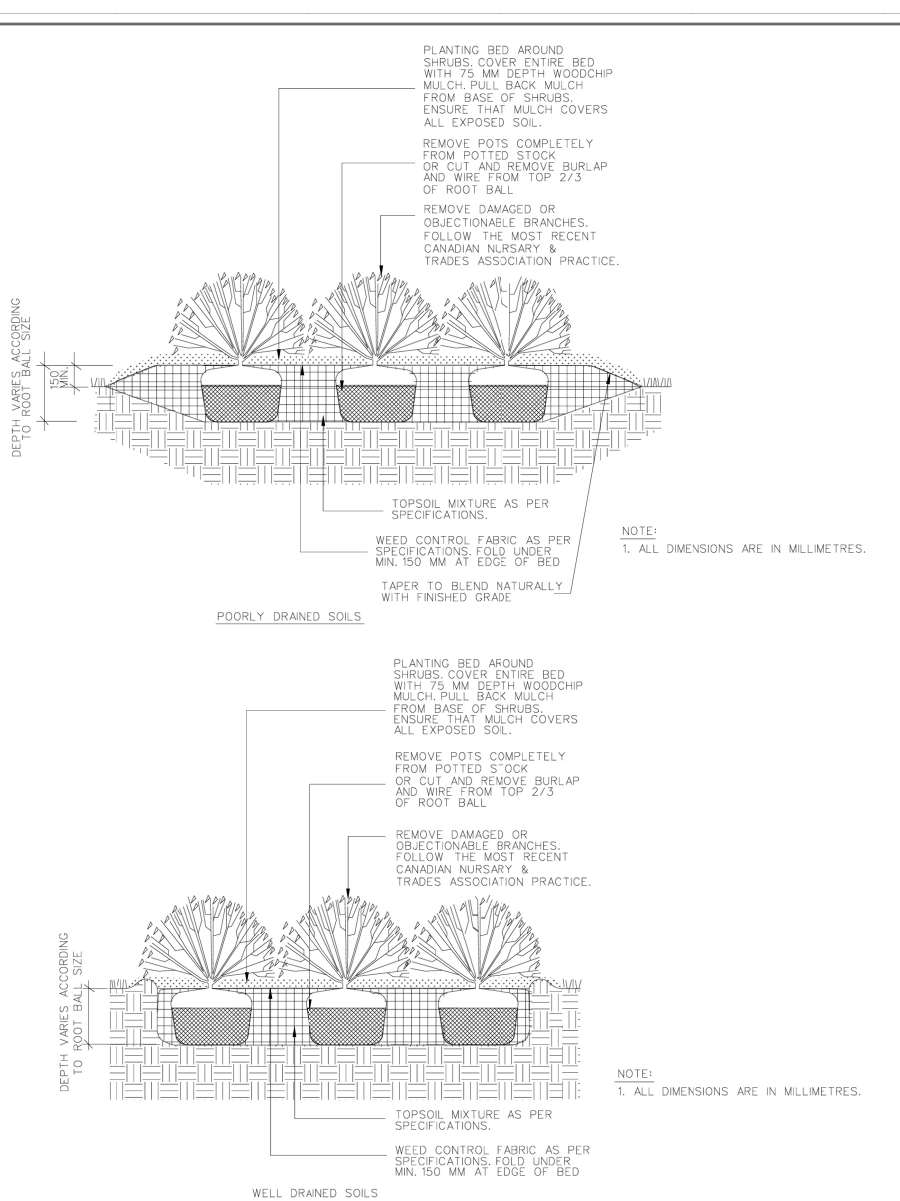
	MONOLITHIC CONCRETE CURB AND SIDEWALK	DATE: MAY 2001
		REV: MARCH 2016
		DWG. No: SC2
		N.T.S.



	TITLE: PLANTING PIT, WELL DRAINED SOILS (ROAD ALLOWANCE)	DATE: MAY 2001
		REV: JAN 2017
		DWG No: L3
		N.T.S.



	TITLE: CONTINUOUS PLANTING BED	DATE: MAY 2001
		REV: JAN 2015
		DWG No: L5
		N.T.S.



	TITLE: SHRUB BED PLANTING	DATE: MAY 2001
		REV: N/A
		DWG No: L4
		N.T.S.

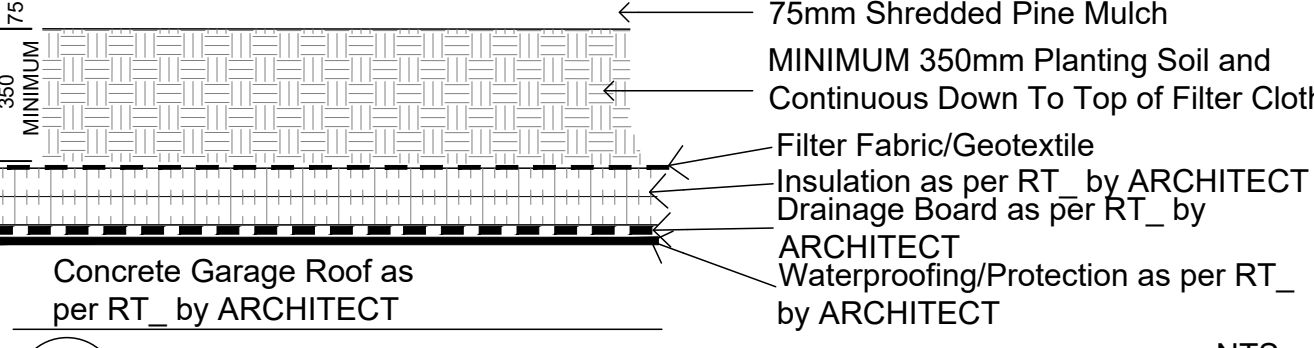
TREES 398-406 ROOSEVELT THE WESTMOUNT					
Code	Qty.	Botanical Name	Common Name	Size	Condition
AC	1	Amelanchier canadensis	Tree Serviceberry	50mm cal	B + B specimen
AG	1	Aesculus glabra	Ohio Buckeye	50mm cal	B + B specimen
GB	6	Ginkgo biloba	Maidenhair Tree	70mm cal	B + B specimen
MH	2	Malus 'Harvest Gold'	Harvest Gold Crabapple	60mm cal	B + B specimen
SR	1	Syringa reticulata	Japanese Tree Lilac	60mm cal	B + B specimen

SHRUBS - 398-406 ROOSEVELT					
Code	Qty.	Botanical Name	Common Name	Size	Condition
HK	175	Hypericum kalmianum	St. John's Wort	40cm Ht.	Pot
SA	165	Spiraea alba	Meadowsweet	60cm Ht.	Pot
PV	75	Panicum virgatum	Switch Grass	9cm Pot	

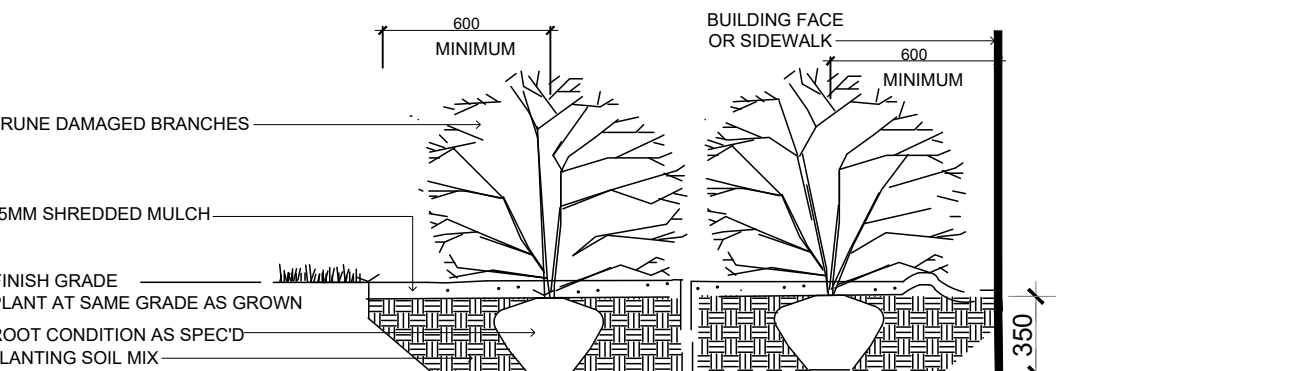
PERENNIALS GROUNDCOVERS ORNAMENTAL GRASS 398-406 ROOSEVELT THE WESTMOUNT					
Code	Qty.	Botanical Name	Common Name	Condition	
	25	Hypericum kalmianum	St. John's Wort	40cm Ht. Pot	
	15	Spiraea alba	Meadowsweet	60cm Ht. Pot	
	50	Calamagrostis acutiflula 'Overdam'	Feather Reed Grass	9cm Pot	
	250	Geranium macrorrhizum	Bigroot Geranium	9cm Pot	
	250	Geranium psilostemon 'Gerwat'	Rozanne Geranium	9cm Pot	
	50	Parthenocissus tricuspidata	Boston Ivy	9cm Pot	
	50	Panicum virgatum	Switch Grass	9cm Pot	

TO BE DISTRIBUTED ON SITE BY GJA INC.

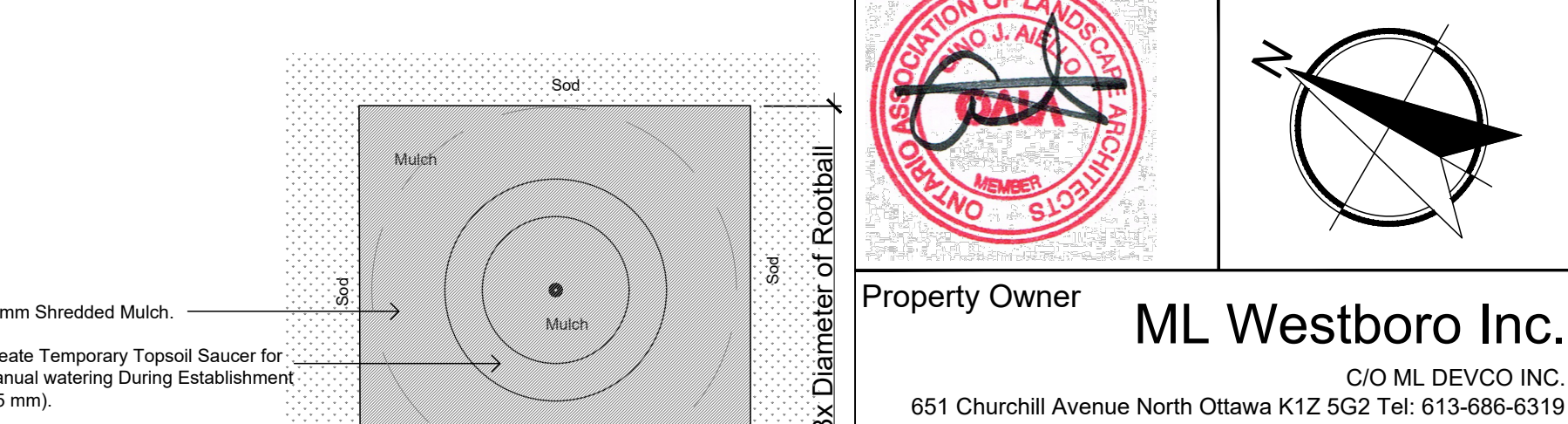
Ensure Filter Fabric is in Place over Insulation, with 500mm Overlap at Seams, and Continuous up and over any Upstands, Drains etc. Notify GJA INC. When Fabric Placement is Ready For Inspection Prior To ANY Soil Placement.



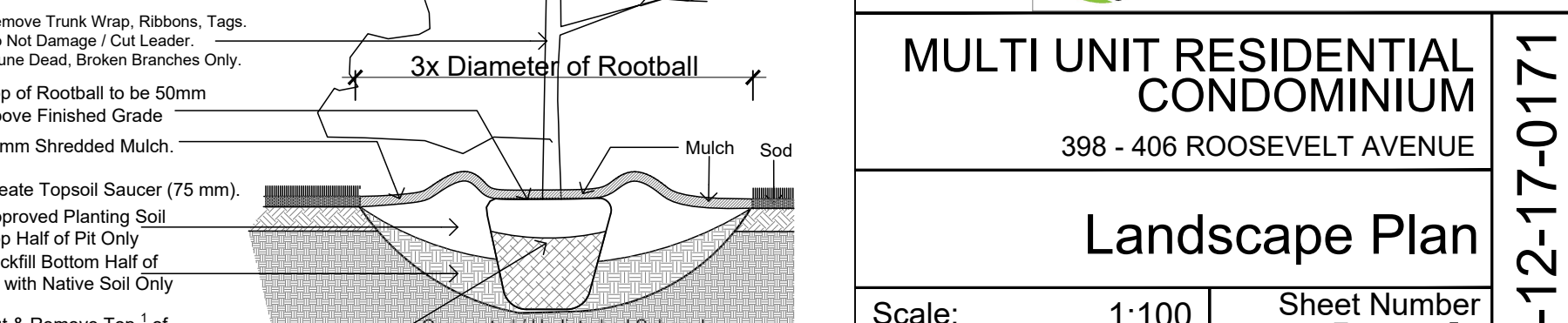
PLANTING ON INSULATED GARAGE ROOF  
 Drainage Board Must Be Provide/Installed Above Waterproofing & Below Insulation If/Where Soil Depths Exceed 350mm - use Commercial Screened Topsoil BELOW Planting Soil



SHRUB PLANTING



TREE PLANTING Plan  
 Create Temporary Topsoil Saver for Manual watering During Establishment (75 mm).



TREE PLANTING Section