

01 Front elevation
Building A



WOONERF AND CENTRAL SPACE



M1

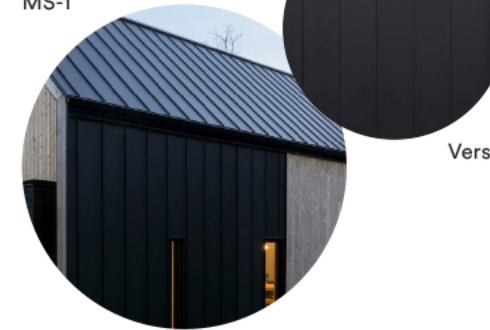
Cladding of 6" wide metal planks with wood finish, installed vertically. Model such as Mac Metal "Norwood" or equivalent, color Cork.



M2

Brick cladding such as "Black Diamond Velour" of Belden or equivalent, "Norman" dimensions.

MS-1



Versa

M3

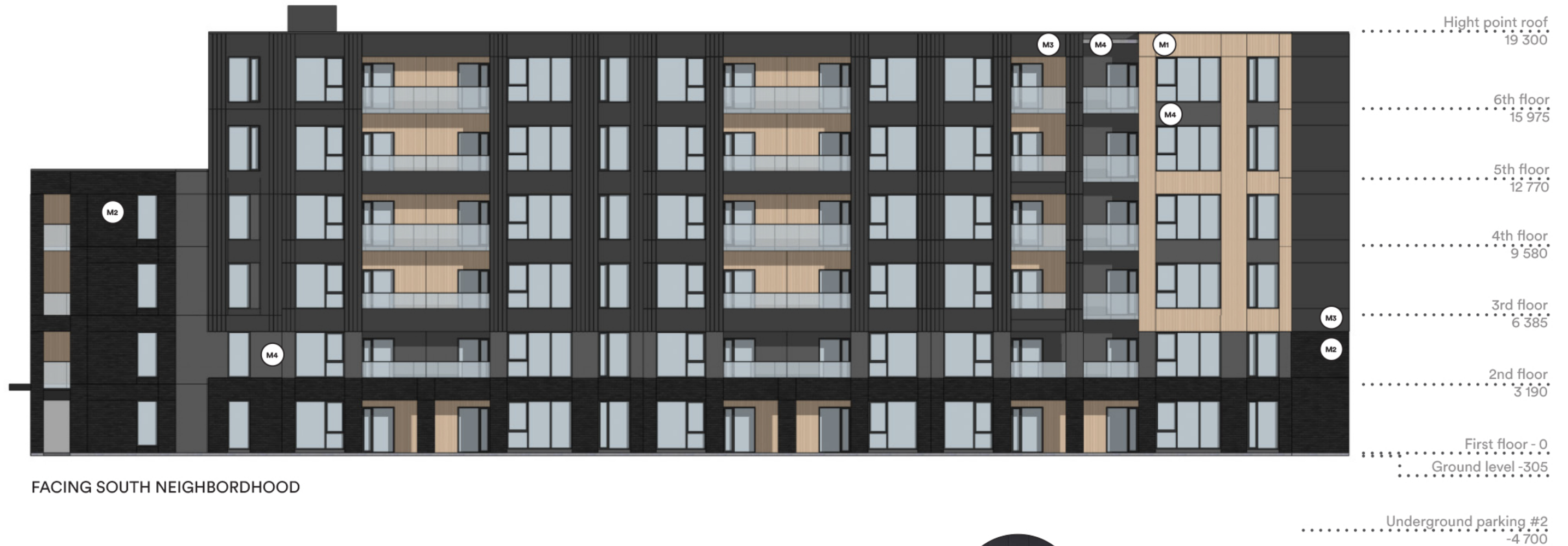
Pinched bead steel cladding such as Mac Metal's MS-1 model when lined on the front and Versa 12" wide panel model in other areas. Titanium black color.



M4

Metal panel cladding, model such as Mac Metal "Versa", 12" wide panel, brushed zinc color.

01 Right elevation
Building A



FACING SOUTH NEIGHBORHOOD



M1

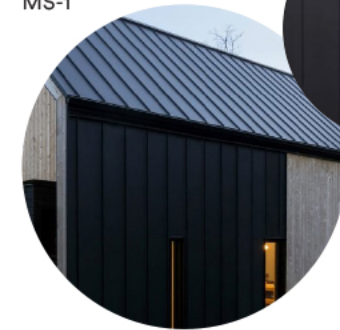
Cladding of 6" wide metal planks with wood finish, installed vertically. Model such as Mac Metal "Norwood" or equivalent, color Cork.



M2

Brick cladding such as "Black Diamond Velour" of Belden or equivalent, "Norman" dimensions.

MS-1



M3

Pinched bead steel cladding such as Mac Metal's MS-1 model when lined on the front and Versa 12" wide panel model in other areas. Titanium black color.



Versa



M4

Metal panel cladding, model such as Mac Metal "Versa", 12" wide panel, brushed zinc color.

01 Rear elevation
Building A



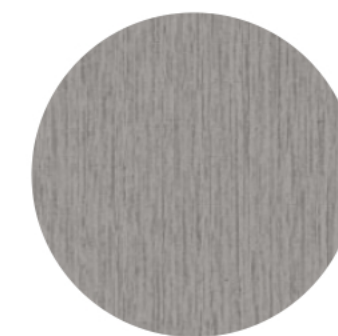
M1 Cladding of 6" wide metal planks with wood finish, installed vertically. Model such as Mac Metal "Norwood" or equivalent, color Cork.



M2 Brick cladding such as "Black Diamond Velour" of Belden or equivalent, "Norman" dimensions.



M3 Pinched bead steel cladding such as Mac Metal's MS-1 model when lined on the front and Versa 12" wide panel model in other areas. Titanium black color.



M4 Metal panel cladding, model such as Mac Metal "Versa", 12" wide panel, brushed zinc color.