

Interlock Paver Schedule:

Pavers

Techo Bloc 330x330x80 HD2

Sandlewood Slate paver in grid pattern

Accent Bands

Techo Bloc Blu 330x495x80 HD2 Slate

Shale Grey laid end-to-end

All pavers to be laid on 500mm compacted evelling course on compacted granuklar base 100mm thick on compacted subgrade. Refer to manufacturer's specification

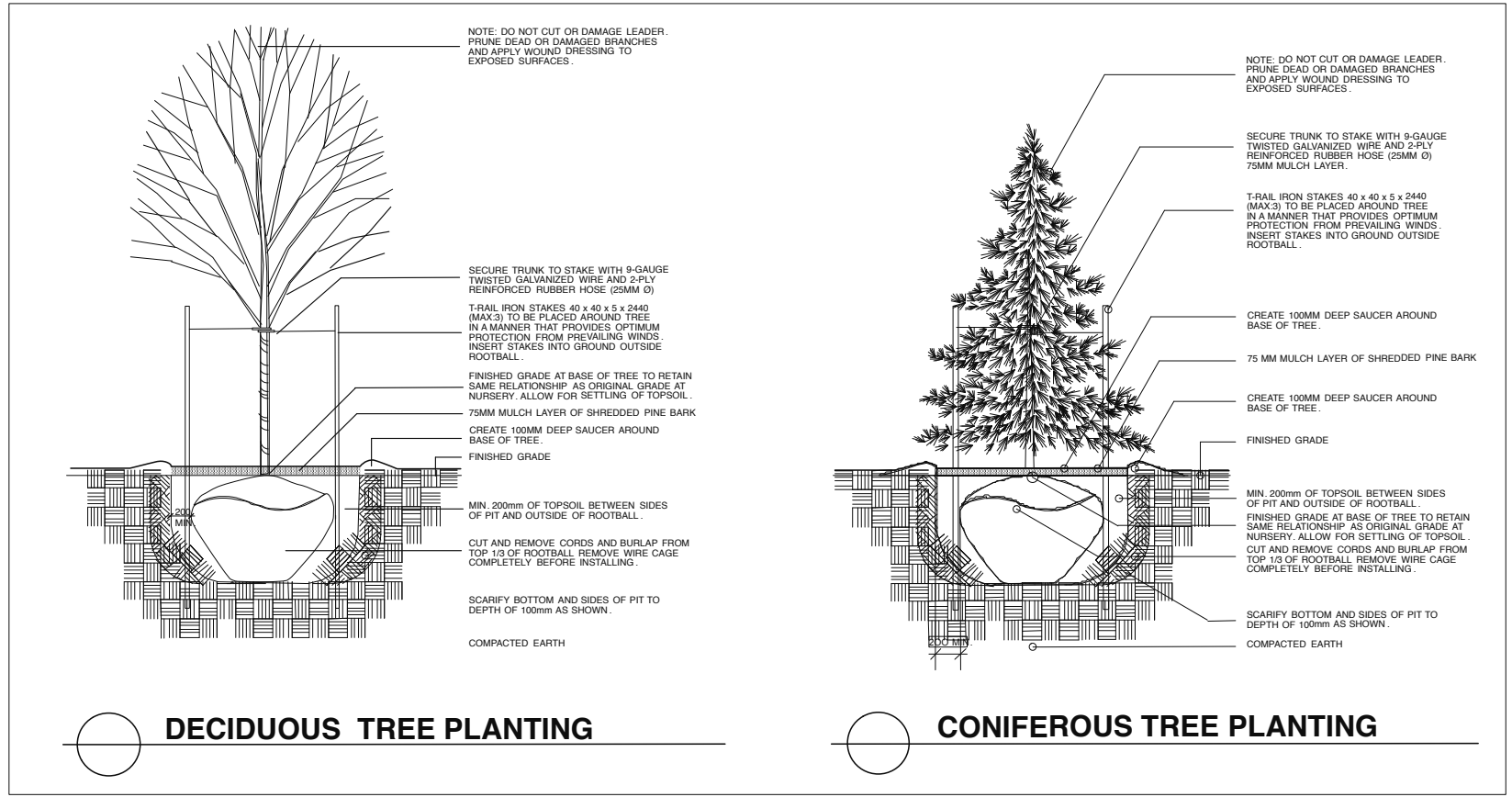
PLANT LIST								
KEY	NO.	BOTANIC NAME	ENGLISH NAME	SIZE	CONDIT.	REMARKS	TYPE	SOIL VOLUMES
PS	6	Pinus strobus	White Pine	2.0m ht	B & B	Well branched	Large Coniferous Tree	Min. soil vol 15m3
PG	6	Picea glauca	White Spruce	2.0m ht	B & B	Well branched	Large Coniferous Tree	Min. soil vol 15m3
AS	4	Acer saccharum	Green Mountain	60mm. cal	B & B	Well branched	Large Deciduous Tree	Min. soil vol 18m3
AR	4	Acer rubrum	Red Maple	60mm. cal	B & B	Well branched	Large Deciduous Tree	Min. soil vol 18m3
GT	4	Gleditsia triacanthos	Sunburst Honeylocust	60mm. cal	B & B	Well branched	Large Deciduous Tree	Min. soil vol 18m3
AL	0	Amelanchier laevis	Allegheny Serviceberry	30mm cal	Standard, full crown		Small Deciduous Tree	Min. soil vol 18m3
SV	4	Syringa vulgaris	Common Lilac	11.5m ht	Potted	Bushy	Large Deciduous Shrub	N/A
NF	130	Nepeta fassenii	Walkers Low Catmint	2 yr old	Container	Full form	Perennial	N/A
RF	195	Rudbeckia fulgida	Goldsturm Blackeyed Susan	2 yr old	Container	Full form	Perennial	N/A
GR	85	Geranium 'Rozanne'	Rozanne Geranium	2 yr old	Container	Full form	Perennial	N/A
JA	0	Helianthus tuberosus	Jerusalem Artichoke	2 yr old	Container	Plump tubers	Perennial	N/A

Setbacks

The following setbacks should be maintained between trees and utilities, paved areas, etc:

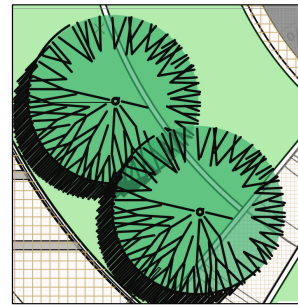
- Driveways: Deciduous Trees 1.5m / Coniferous Trees 2.5m
- Buried Utilities (water pipes, storm & sanitary sewers, cables, other buried services): 2.0 m
- Aboveground Structures (streetlights, hydrants, curbs, hydro boxes): 1.5 m

NOTE: FOR DETAILS OF CENTRAL AREA WITH ART ELEMENT, PLEASE REFER TO ATTACHED DRAWINGS SP 02 AND SP 03, PREPARED BY ROBERT WOODMAN ARCHITECT

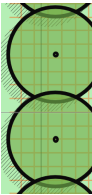


- NOTE:
1. Landscape Contractor must advise Project Landscape Architect of the start of construction min. 48 hours by email prior to commencement of work, and obtain approval for planting and paving layouts before installation.
  2. Landscape Contractor must keep up-to-date record of all changes to landscape installations, including planting, paving and site furniture placement.
  3. Landscape Contractor should adhere closely to organic and geometric layouts as shown on landscape plan to ensure optimum placing, spacing and display of plantings.
  4. Landscape Contractor to use discretion and judgement and reject trees or plants on site which do not meet minimum size, shape and branch growth criteria as specified on this drawing.
  5. Wire baskets and burlap used to hold the root ball and rope that is tied around the root collar are to be removed at the time of the planting of the trees. trees planted too deep or too shallow, or without the baskets and rope removed, may be rejected at the time of the inspection regardless of the length of time between the date of planting and the date of the inspection.
  6. All deciduous street trees to be planted 0.6 m away from property line and 1.5 m away from any adjacent driveway, coniferous trees to be planted on private property and set back as necessary to avoid conflicts sightlines, especially at daylight triangles.
  7. Locations and configurations of driveway and unit footprints are schematic only.
  8. Adjust tree locations on site in accordance with utility and easement locations.
  9. Before installing, establish correct locations of plant material and fencing on site by checking locations of access easements and other minimum clearances. refer to the site plan, survey plan, and engineering drawings prepared by others.
  10. Final locations of trees to be adjusted in accordance with building and driveway locations on site.

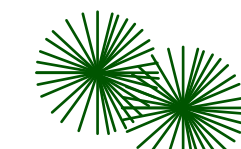
VEGETATION LEGEND



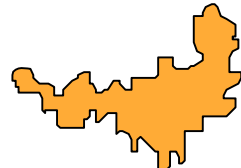
Proposed Deciduous Trees



Proposed Deciduous Shrubs



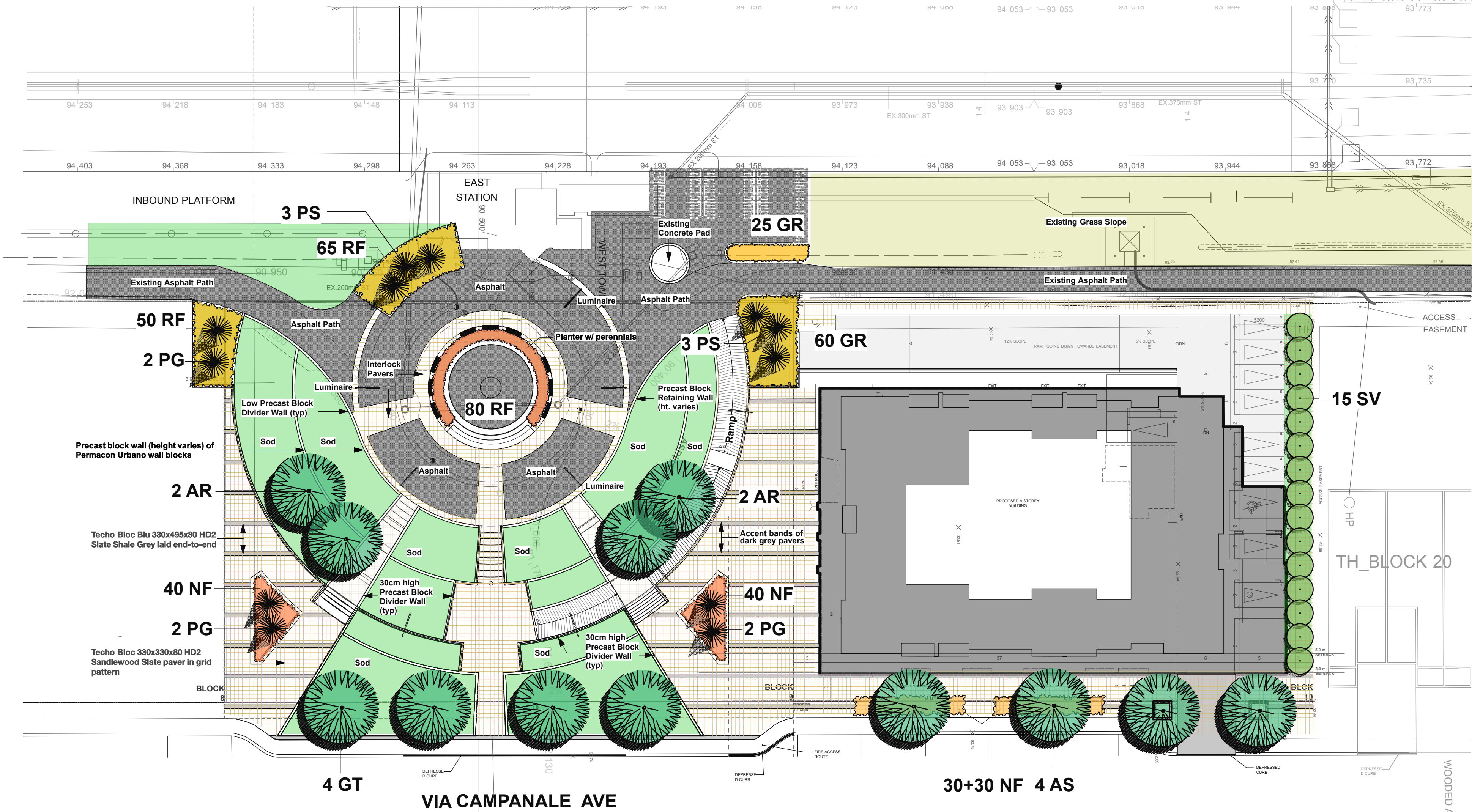
Proposed Coniferous Trees



Proposed Shrubs and Perennials



Sod



KEY PLAN



NOTES:

1. DO NOT SCALE THIS DRAWING.
2. THIS DRAWING IS TO BE READ IN CONJUNCTION WITH RELATED ARCHITECTURAL/ENGINEERING DRAWINGS.
3. IT IS THE RESPONSIBILITY OF THE APPROPRIATE CONTRACTOR TO CHECK AND VERIFY ALL DIMENSIONS ON SITE AND REPORT ALL ERRORS AND/OR OMISSIONS TO THE LANDSCAPE ARCHITECT BEFORE PROCEEDING WITH WORK.
4. CONTRACTOR MUST OBTAIN AND COMPLY WITH ALL PERMIT CODES AND BY-LAWS. ALL PERMITS ARE THE RESPONSIBILITY OF THE CONTRACTOR.
5. THIS DRAWING MUST NOT BE USED FOR CONSTRUCTION UNTIL SIGNED BY THE LANDSCAPE ARCHITECT.
6. COPYRIGHT RESERVED. THIS DRAWING IS THE EXCLUSIVE PROPERTY OF THAKAR ASSOCIATES DESIGN CONSULTANTS AND SHALL NOT BE USED FOR ANY PURPOSE WHATSOEVER WITHOUT WRITTEN CONSENT. GRAPHIC SYMBOLS, DETAILS AND FORMATS USED ON THIS DRAWING ARE COPYRIGHTED AND MAY NOT BE COPIED, ADAPTED OR REPRODUCED IN ANY FORM WITHOUT THE WRITTEN CONSENT OF THAKAR ASSOCIATES.
7. CONTRACTOR SHALL NOTIFY LANDSCAPE ARCHITECT BY PHONE AND MAIL AT LEAST 48 HOURS IN ADVANCE OF THE COMMENCEMENT OF DEMOLITION WORK, REMOVAL OF EXISTING VEGETATION AND THE START OF NEW CONSTRUCTION.
8. BASE INFORMATION TAKEN FROM DRAWINGS SUPPLIED BY THE CAMPANALE GROUP.

SITE LAYOUT:

1. CONTRACTOR TO STAKE OUT SITE ELEMENTS AND OBTAIN APPROVAL OF LANDSCAPE ARCHITECT BEFORE COMMENCING WORK.
2. ALL HORIZONTAL DIMENSIONS ARE SHOWN IN METRES AND MILLIMETRES.
3. PRELIMINARY ITEMS TO BE INSTALLED AS PER MANUFACTURERS INSTRUCTIONS.
4. ALL FENCING IS TO BE INSTALLED 0.1M INSIDE PRIVATE PROPERTY PARALLEL TO THE PROPERTY LINE UNLESS OTHERWISE INDICATED.

DEMOLITION:

1. ALL EXISTING AREAS AND/OR ITEMS INDICATED FOR DEMOLITION AND REMOVAL ARE TO BE REMOVED FROM SITE.
2. DEMOLITION RUBBLE OR RUBBISH IS TO BE REMOVED FROM SITE. BACKFILLING OF RUBBLE WILL NOT BE ACCEPTED. ITEMS TO BE REMOVED INCLUDE ASSOCIATED WIRING, PIPING, TUBING AND SIMILAR SUBSISTANCES UNLESS INDICATED ON THE DRAWINGS AS ITEMS TO BE RETAINED.
3. TREES AND SHRUBS INDICATED TO BE REMOVED ARE ALSO TO BE GRUBBED OUT INCLUDING STAMPS AND ROOTS, TO A MINIMUM OF 400 MM BELOW GRADE.
4. ALL AREAS, ITEMS OR STRUCTURES DESIGNATED FOR RETENTION ON SITE ARE TO BE REINSTATED, REPLACED OR REPAIRED AT THE LANDSCAPE ARCHITECT'S OPTION AND TO THE SATISFACTION OF THE LANDSCAPE ARCHITECT. THESE ARE TO BE DAMAGED OR DISTURBED.

PLANTING/SODDING:

1. THE CONTRACTOR IS TO VERIFY THE LOCATION OF ALL UNDER-GROUND UTILITIES PRIOR TO COMMENCING WORK. PLANTING WHICH CONFLICTS WITH UNDERGROUND UTILITIES IS TO BE RELOCATED AT THE DIRECTION OF THE LANDSCAPE ARCHITECT.
2. ALL STREET TREES, TREES OR SHRUBS ARE TO BE LOCATED WITHIN THE MUNICIPAL BOUNDARY AT A DISTANCE OF 0.6M FROM THE PROPERTY LINE.
3. NO PLANT MATERIALS SUBSTITUTIONS WILL BE ACCEPTED WITHOUT PRIOR APPROVAL FROM THE LANDSCAPE ARCHITECT.
4. ALL PLANT MATERIAL IS TO BE NURSERY GROWN STOCK AND SHALL MEET OR EXCEED THE SPECIFICATIONS OF THE CANADIAN NURSERY TRADES ASSOCIATION (1995) FOR SIZE, HEIGHT, SPREAD, GRADE AND METHOD OF CULTIVATION.
5. ALL EXCAVATED MATERIAL FROM PLANTING SITS TO BE REMOVED FROM SITE. BACKFILL PLANTING INSTALLATIONS WITH IMPORTED PREPARED TOPSOIL, OR STOCKPILED TOPSOIL ON SITE, SUBJECT TO LANDSCAPE ARCHITECT'S APPROVAL.
6. SOILING AND SEEDING TO BE INSTALLED ON MINIMUM 150 MM AND 150 MM DEEP LAYERS RESPECTIVELY OF PREPARED IMPORTED TOPSOIL.
7. SODS ARE TO BE INSTALLED IN BEDS (EXCEPT ON SLOPES) WITH MINIMUM DEPTH OF 100 MM AND MULCHED WITH 75 MM MINIMUM LAYER OF SHREDDED PINE BARK MULCH UNLESS OTHERWISE SPECIFIED.
8. ALL TREES TO BE STAKED ACCORDING TO THE STANDARDS INDICATED ON THE PLANTING DETAILS.
9. ALL AREAS DESTROYED DURING CONSTRUCTION, BEYOND THE PROJECT LIMITS, ARE TO BE REINSTATED TO ORIGINAL CONDITIONS AT THE CONTRACTOR'S EXPENSE.
10. ALL PLANT MATERIAL AND GRASS ARE TO BE INSTALLED UNDER THE CONTRACT SHALL BE WATERED, WEDED AND MAINTAINED BY THE CONTRACTOR UNTIL WRITTEN ACCEPTANCE OF THE WORK BY THE LANDSCAPE ARCHITECT.
11. ARRANGEMENT AND SPACING OF PLANT MATERIAL ON SITE TO BE IN ACCORDANCE WITH GOOD HORTICULTURAL PRACTICES AND AESTHETIC CRITERIA. CONTRACTOR TO ENSURE THAT SPACING AND POSITIONING OF PLANTS ARE OPTIMIZED FOR BEST VISUAL DISPLAY AND OUTLINES OF SHRUB BEDS AND OTHER AREAS ARE SMOOTH, UNIFORM AND SENSITIVE TO THE DESIGN INTENT.

CAMPANALE HOMES

200-1187 Bank Street, Ottawa  
Ontario K1S 3X7  
Tel. 613 730-7000

THAKAR ASSOCIATES

Design Consultants

Landscape Architects

54 Bennett Street, Ottawa Ontario K1V 9L4  
Tel: (613) 523-7602 Fax: (613) 523-2262  
Email: mail@thakarassociates.com

Project

**BLOCK 10**  
**MIXED USE DEVELOPMENT**

Dwg. Title

**LANDSCAPE PLAN**

Drawn

STAFF

Start Date

Scale

1:300

Dwg. No.

Job No.

288.10

**L - 1**

