

PROJET | PAYSAGE

24 Mont-Royal O. Bureau 801 Montréal Québec H2T 2S2
T: 514.849.7700 F: 514.849.2027 info@projetpaysage.com



CLIENT:



PROJECT: 2026 SCOTT STREET

LANDSCAPE ARCHITECTURE

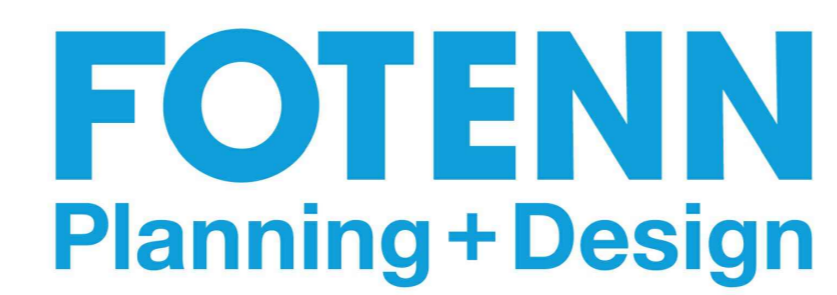
SHEET	TITLE	SCALE
AP-10	SITE PLAN	1:150
AP-20	LANDSCAPE PLAN AND GRADING	1:150
AP-30	PLANTING PLAN	1:150
AP-40	PLANTING BED PLAN	1:150
AP-50	CONSTRUCTION DETAILS	VARIABLE
AP-51	CONSTRUCTION DETAILS	VARIABLE
AP-52	PLANTING DETAILS	VARIABLE

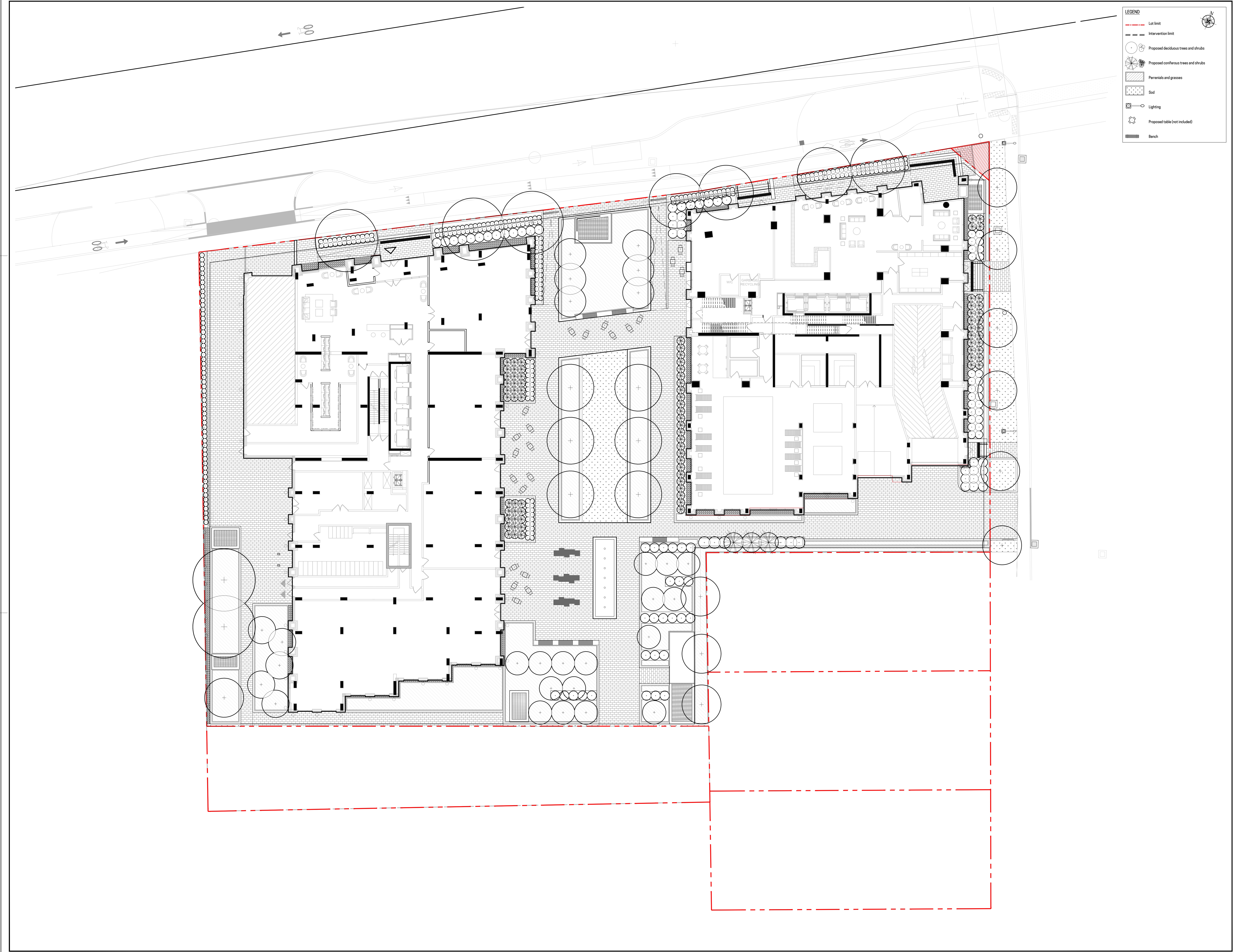
In collaboration with:

Architecture

Civil Eng.

Urban Planning





LEGEND

- Lot limit
- Intervention limit
- + Proposed deciduous trees and shrubs
- * Proposed coniferous trees and shrubs
- Perennials and grasses
- Sod
- Lighting
- + Proposed table (not included)
- Bench

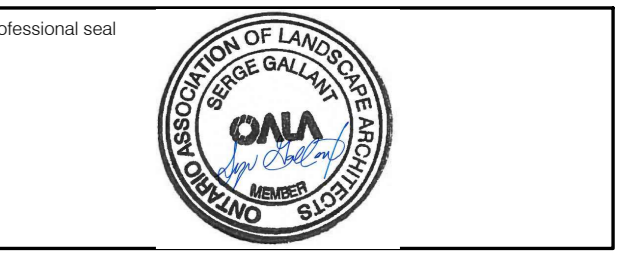
MORLEY HOPPNER

Revisions			
No.	Description	Appr.	Date
1	Site Plan Control	S.G.	23/02/22
2	Site Plan Control	P.L.	23/10/13
3	Site Plan Control	P.L.	24/03/25
4	Site Plan Control	P.L.	24/04/12
5	Site Plan Control	P.L.R.	22/06/25

DO NOT USE FOR CONSTRUCTION

- Notes :**
- 1- The Contractor must verify all site existing conditions before beginning the work and inform the Project Director of any errors, omissions or contradictions.
 - 2- Existing grades indicated on the plan come from the survey provided by the owner.
 - 3- The Contractor must not cut down any existing vegetation without the approval of the Project Director.
 - 4- Implantation of the works on site must be approved by the Project Director.
 - 5- The Contractor must use the CAD file for implantation of all work.
 - 6- The contractor must verify the amounts specified in the schedule and notify the landscape architect of any errors, omissions or contradictions before the close of the bid.

PROJET | PAYSAGE
 24 Mont-Royal O. Bureau 801, Montréal, Québec, H2T 2S2
 T: 514 849 7700 F: 514 849 2027 info@projetpaysage.com



Project name:
2026 Scott Street
 File Number: 037-12-23-0019
 Plan Number: # 18976

Drawing title:
SITE PLAN
 Scale: 1:150

Designed by: P.L. Richard, S. Gallant	AP-00
Drawn by: A. Syedah, J.Néron-Houde	
Approved by: S. Gallant	
Date: June 2024	
21-698	

Revisions			
No.	Description	Appr.	Date
1	Site Plan Control	S.G.	23/02/22
2	Site Plan Control	P.L.	23/10/13
3	Site Plan Control	P.L.	24/03/25
4	Site Plan Control	P.L.	24/04/12
5	Site Plan Control	P.L.R.	22/06/25

DO NOT USE FOR CONSTRUCTION

LEGEND

- Lot limit
- - - Intervention limit
- Lighting
- ▨ Planting bed, see planting plan
- ▤ Sod, see planting plan

List of details on plans

Key Description

Surfaces

- 01 High albedo concrete unit paver type 01
- 02 High albedo concrete unit paver type 02
- 03 River rock strip

Stairs, thresholds, edges and walls

- 10 Prefabricated concrete stairs
- 11 Concrete curb, see civil

Precast concrete

- 20 Precast concrete bench planter (450mm)
- 21 Precast concrete planter wall (200mm)

Site furniture

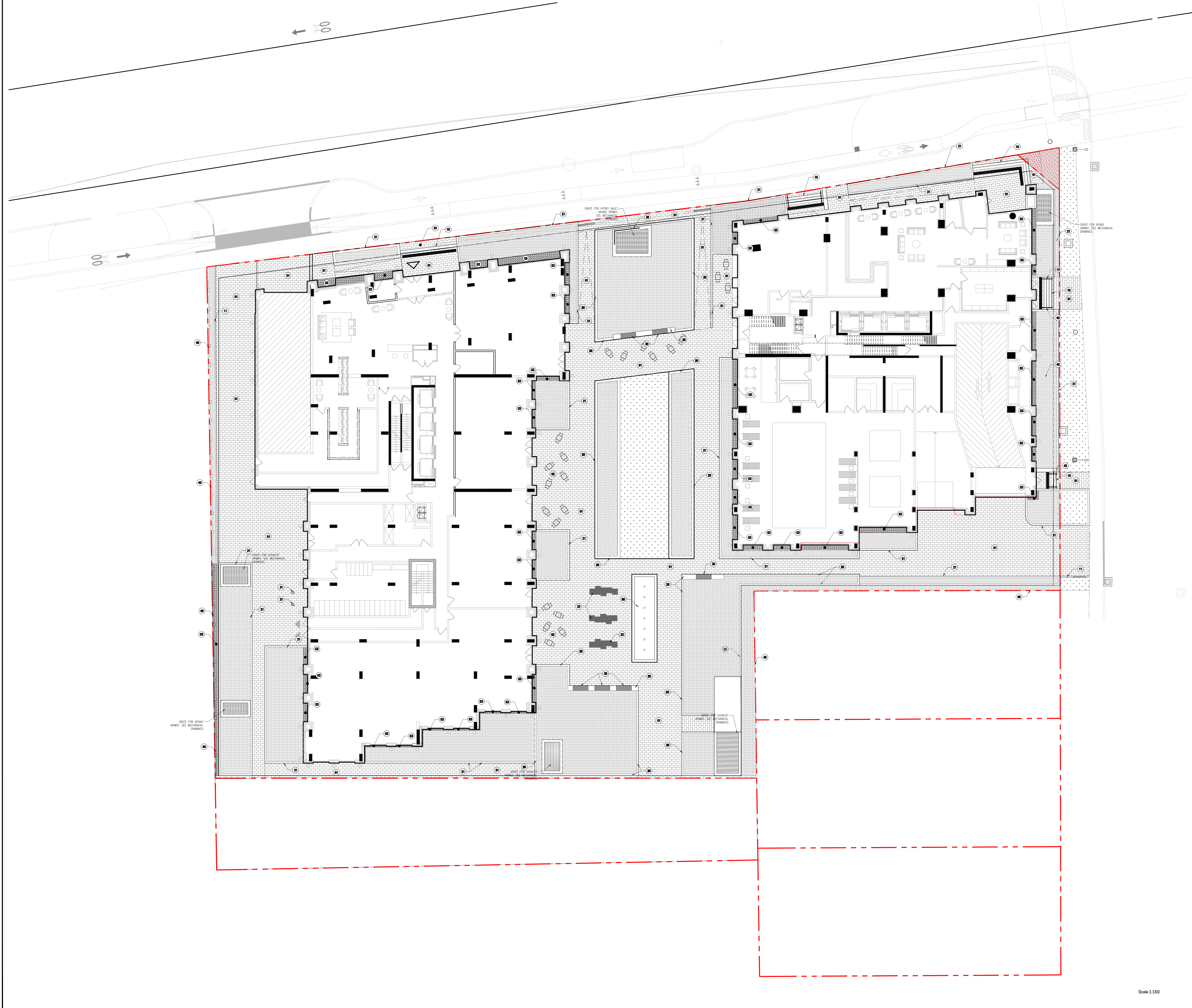
- 30 Wood bench typ.
- 31 Bike ring typ.
- 32 Weyfolding / Wind screen
- 33 Sculptural seating

Fence, gates, handrail and railing

- 40 Metal fence 2m of height
- 42 Handrail

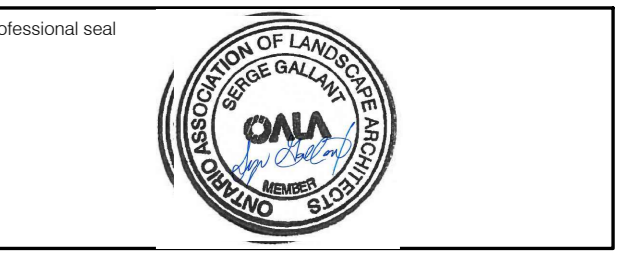
Water feature

- 80 Raised custom fountain



- Notes :**
- 1- The Contractor must verify all site existing conditions before beginning the work and inform the Project Director of any errors, omissions or contradictions.
 - 2- Existing grades indicated on the plan come from the survey provided by the owner.
 - 3- The Contractor must not cut down any existing vegetation without the approval of the Project Director.
 - 4- Implementation of the works on site must be approved by the Project Director.
 - 5- The Contractor must use the CAD file for implementation of all work.
 - 6- The contractor must verify the amounts specified in the schedule and notify the landscape architect of any errors, omissions or contradictions before the close of the bid.

PROJET | PAYSAGE
 24 Mont-Royal O. Bureau 801, Montréal, Québec H2T 2S2
 T: 514 849 7700 F: 514 849 2027 info@projetpaysage.com



Project name
2026 Scott Street
 File Number: 037-12-25-0019
 Plan Number # 18076

Drawing title
LANDSCAPE PLAN AND GRADING

Scale 1:150

Designed by
 P.L. Richard, S. Gallant

Drawn by
 A. Siedah, J. Néron-Houde

Approved by
 S. Gallant

Date
 June 2024

Sheet No.
AP-20

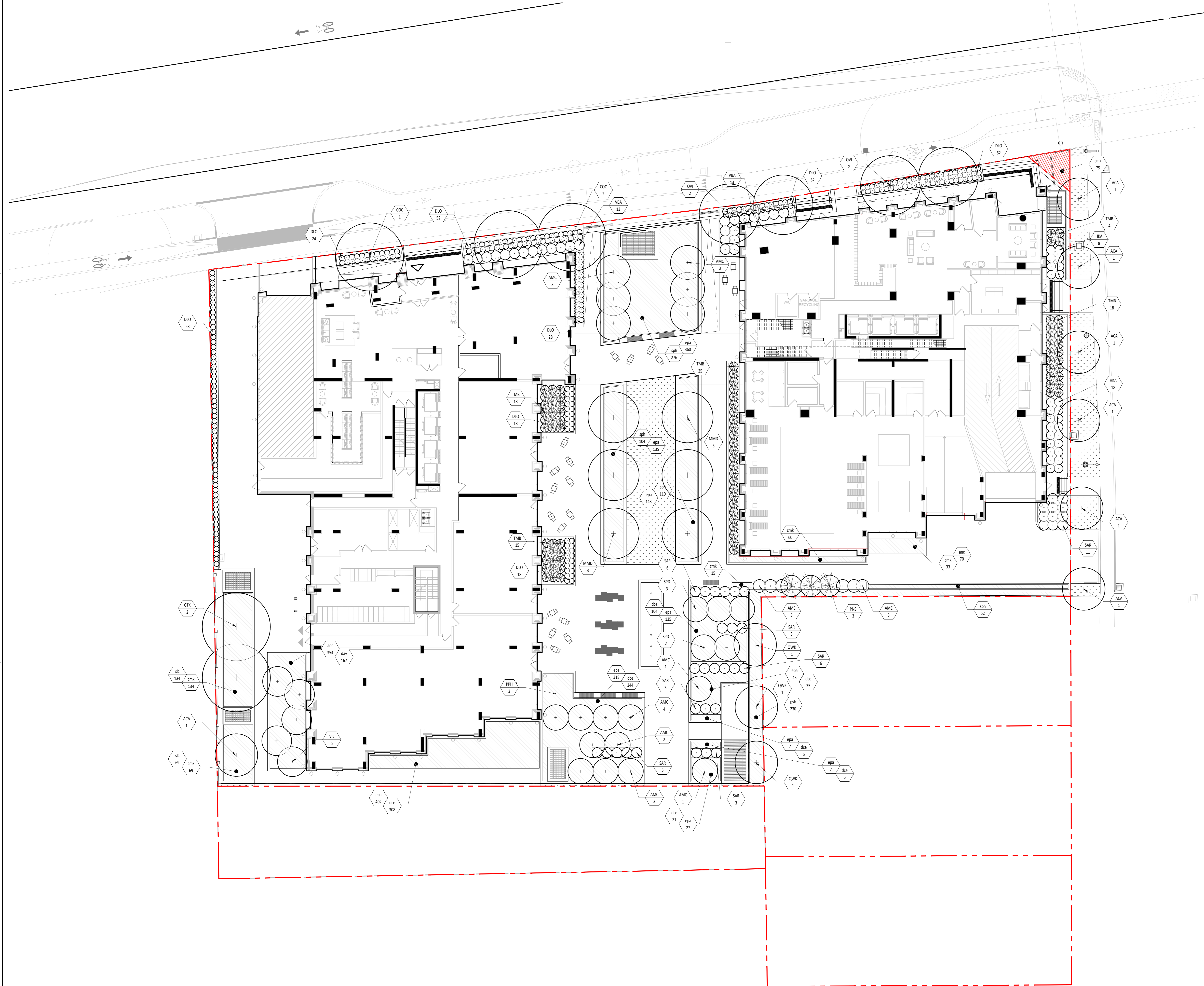
21-698

Scale 1:150

No.	Description	Appr.	Date
1	Site Plan Control	S.G.	23/09/22
2	Site Plan Control	P.L.	23/10/13
3	Site Plan Control	P.L.	24/03/25
4	Site Plan Control	P.L.	24/04/12
5	Site Plan Control	P.L.R.	22/06/25

DO NOT USE FOR CONSTRUCTION

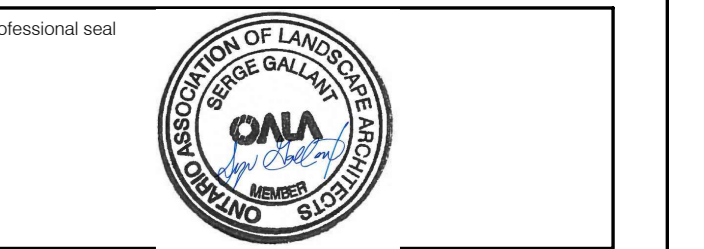
- LEGEND**
- Lot limit
 - Intervention limit
 - Proposed deciduous trees and shrubs
 - Proposed coniferous trees and shrubs
 - Perennials and grasses
 - Sod
 - Planting key



- Notes :**
- The Contractor must verify all site existing conditions before beginning the work and inform the Project Director of any errors, omissions or contradictions.
 - Existing grades indicated on the plan come from the survey provided by the owner.
 - The Contractor must not cut down any existing vegetation without the approval of the Project Director.
 - Implementation of the works on site must be approved by the Project Director.
 - The Contractor must use the CAD file for implementation of all work.
 - The contractor must verify the amounts specified in the schedule and notify the landscape architect of any errors, omissions or contradictions before the close of the bid.

PROJET | PAYSAGE

24 Mont-Royal O. Bureau 801. Montréal Québec H2T 2S2
T: 514 849 7700 F: 514 849 2027 info@projetpaysage.com

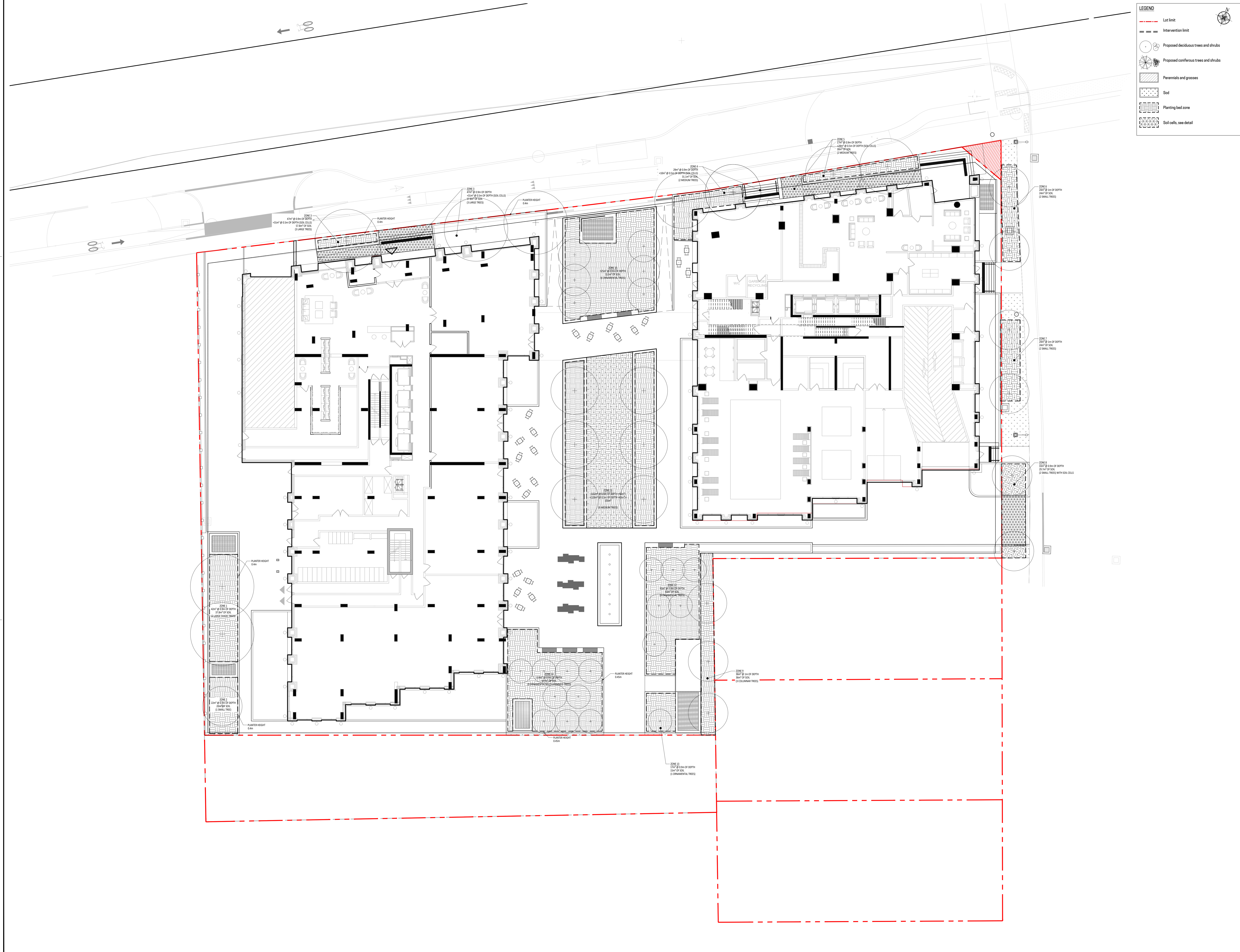


Project name:
2026 Scott Street
File Number: 037-12-25-0019
Plan Number: # 18076

Drawing title:
PLANTING PLAN

Scale: 1:150

Designed by:
P.L. Richard, S. Gallant
Checked by:
A. Syedah, J.Néron-Houde
Approved by:
S. Gallant
Date:
June 2024
Drawing No. **AP-30**
21-698



LEGEND

- Lot limit
- - - Intervention limit
- Proposed deciduous trees and shrubs
- ⊗ Proposed coniferous trees and shrubs
- ▨ Perennials and grasses
- ▤ Sod
- ▩ Planting bed zone
- ▧ Soil cells, see detail

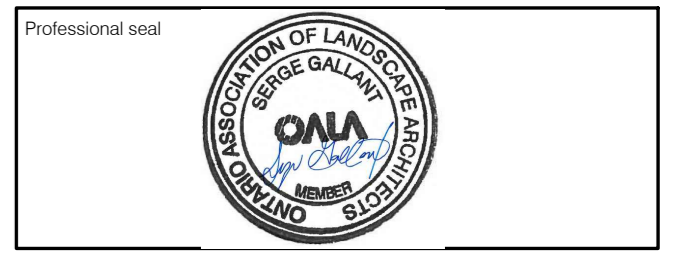
Revisions

No.	Description	Appr.	Date
1	Site Plan Control	S.G.	23/02/22
2	Site Plan Control	P.L.	23/10/13
3	Site Plan Control	P.L.	24/03/25
4	Site Plan Control	P.L.	24/04/12
5	Site Plan Control	P.L.R.	22/06/25

DO NOT USE FOR CONSTRUCTION

- Notes :**
- The Contractor must verify all site existing conditions before beginning the work and inform the Project Director of any errors, omissions or contradictions.
 - Existing grades indicated on the plan come from the survey provided by the owner.
 - The Contractor must not cut down any existing vegetation without the approval of the Project Director.
 - Implementation of the works on site must be approved by the Project Director.
 - The Contractor must use the CAD file for implementation of all work.
 - The contractor must verify the amounts specified in the schedule and notify the landscape architect of any errors, omissions or contradictions before the close of the bid.

PROJET | PAYSAGE
 24 Mont-Royal O. Bureau 801, Montréal, Québec H2T 2S2
 T: 514 849 7700 F: 514 849 2027 info@projetpaysage.com

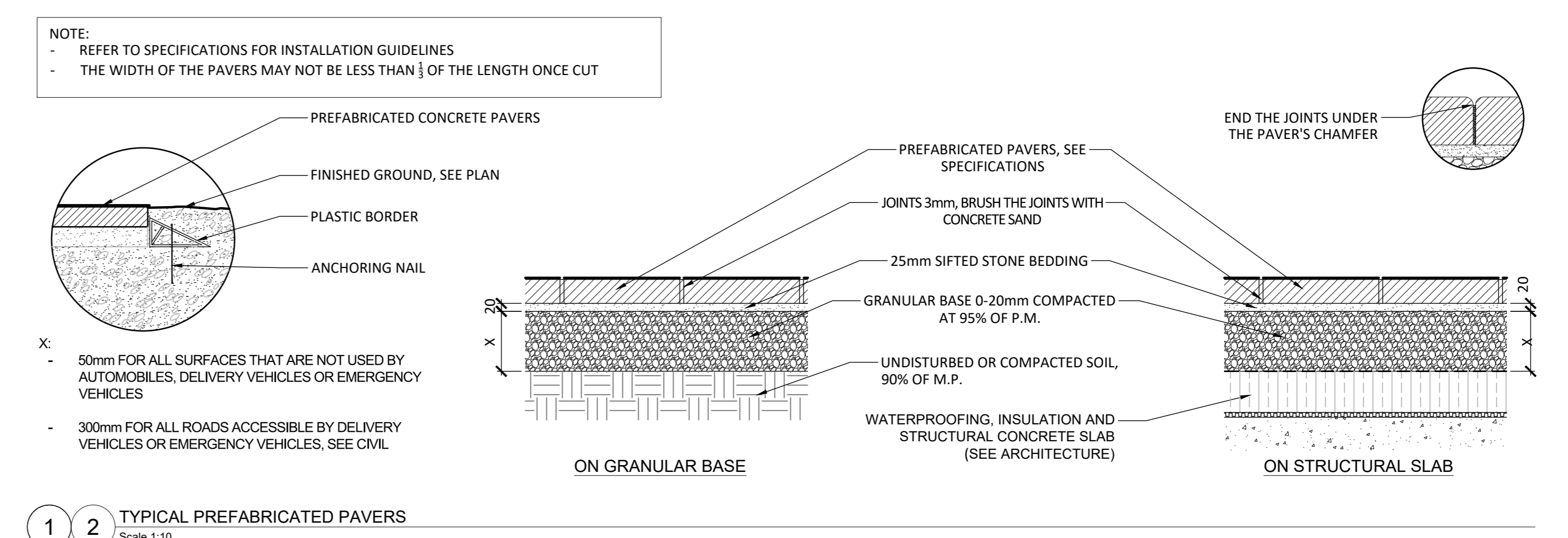
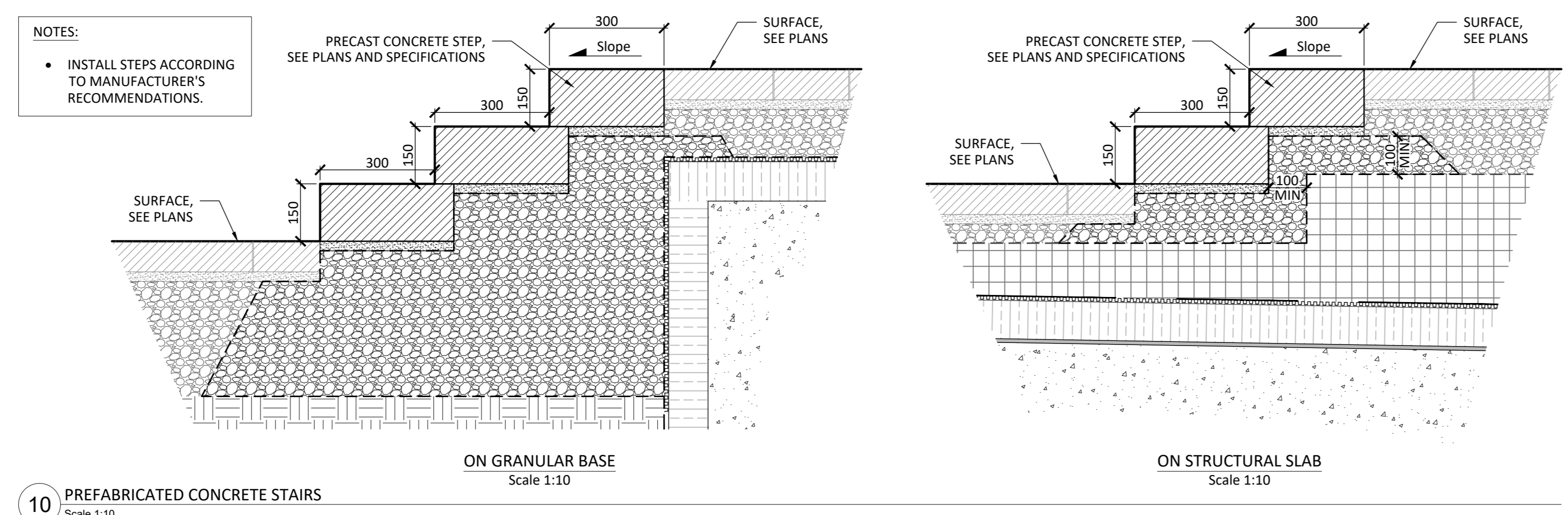


Project name:
2026 Scott Street
 File Number: 037-12-23-0019
 Plan Number: #18076

Drawing title:
PLANTING BED PLAN
 Scale 1:150

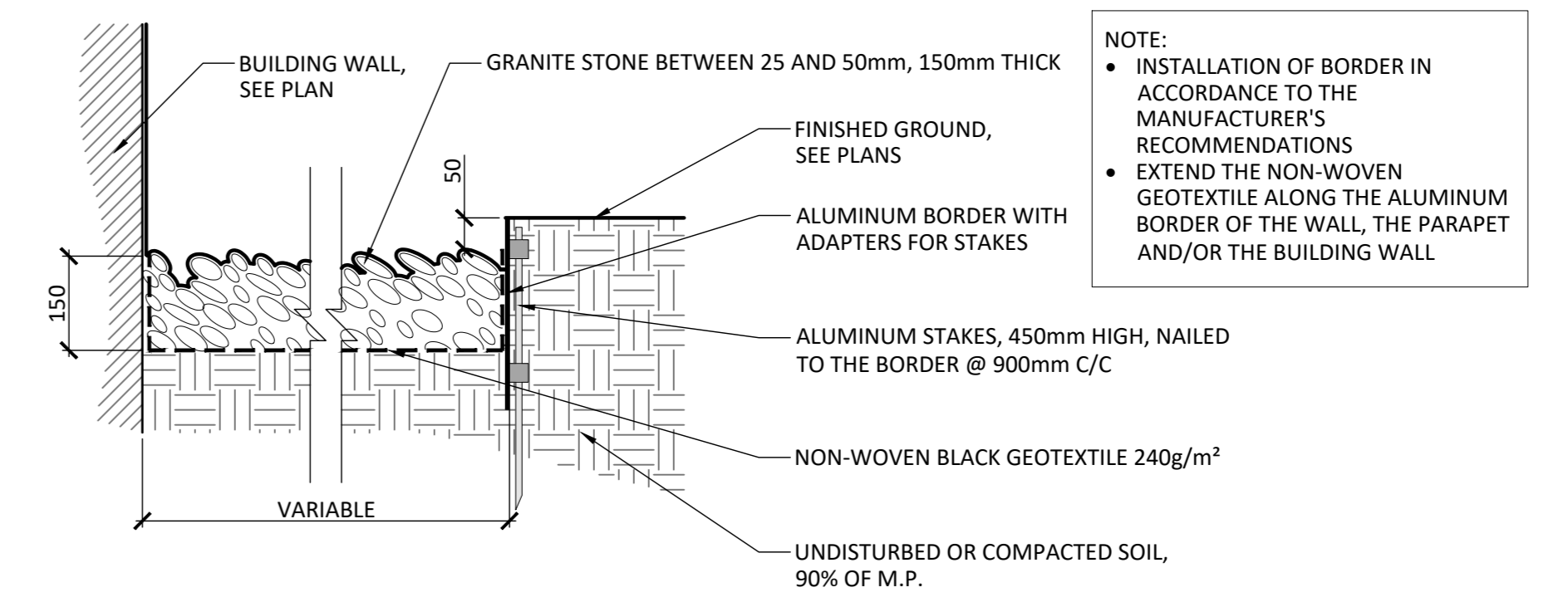
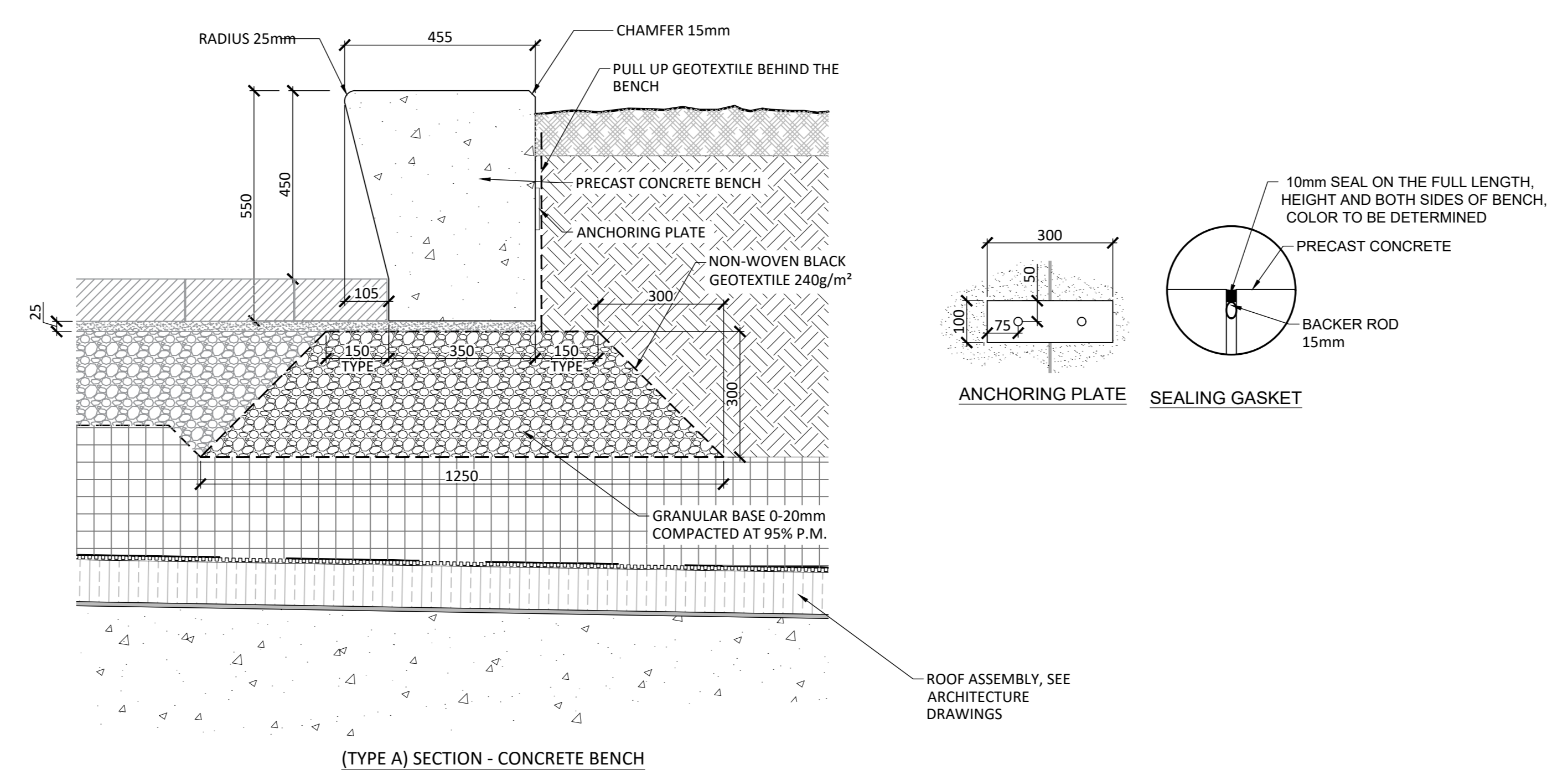
Designed by:
 P.L. Richard, S. Gallant
 Drawn by:
 A. Syedah, J. Néron-Houde
 Approved by:
 S. Gallant
 Date:
 June 2024
AP-40
 21-698

No.	Description	Appr.	Date
1	Site Plan Control	S.G.	23/02/22
2	Site Plan Control	P.L.	23/10/13
3	Site Plan Control	P.L.	24/03/25
4	Site Plan Control	P.L.	24/04/12
5	Site Plan Control	P.L.R.	22/06/25



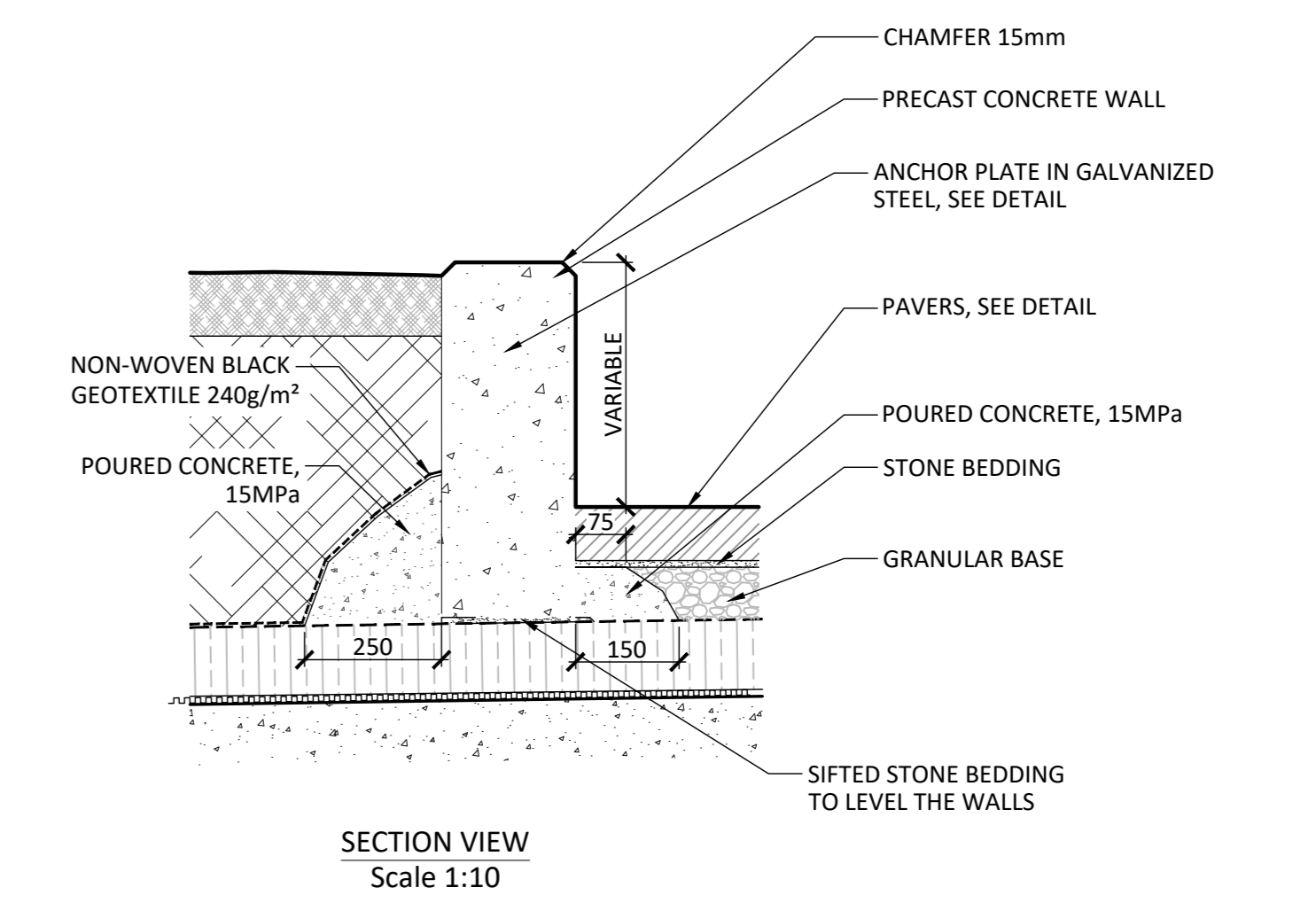
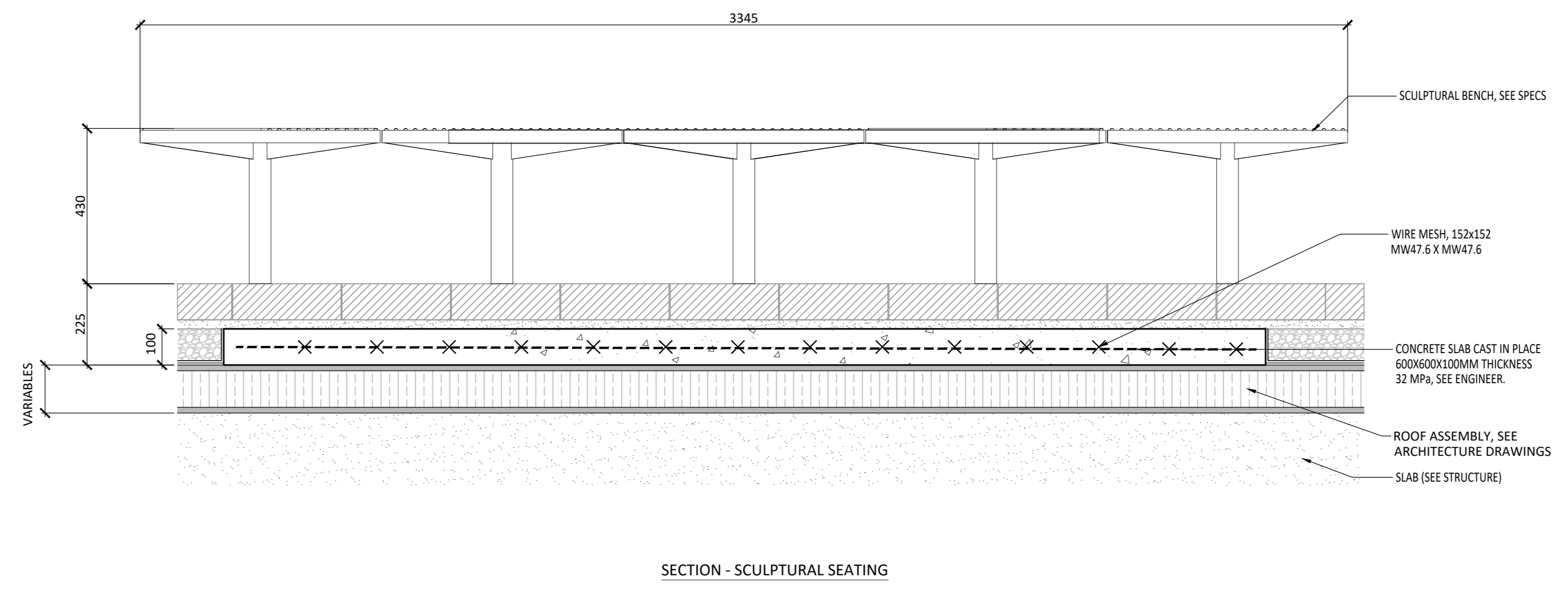
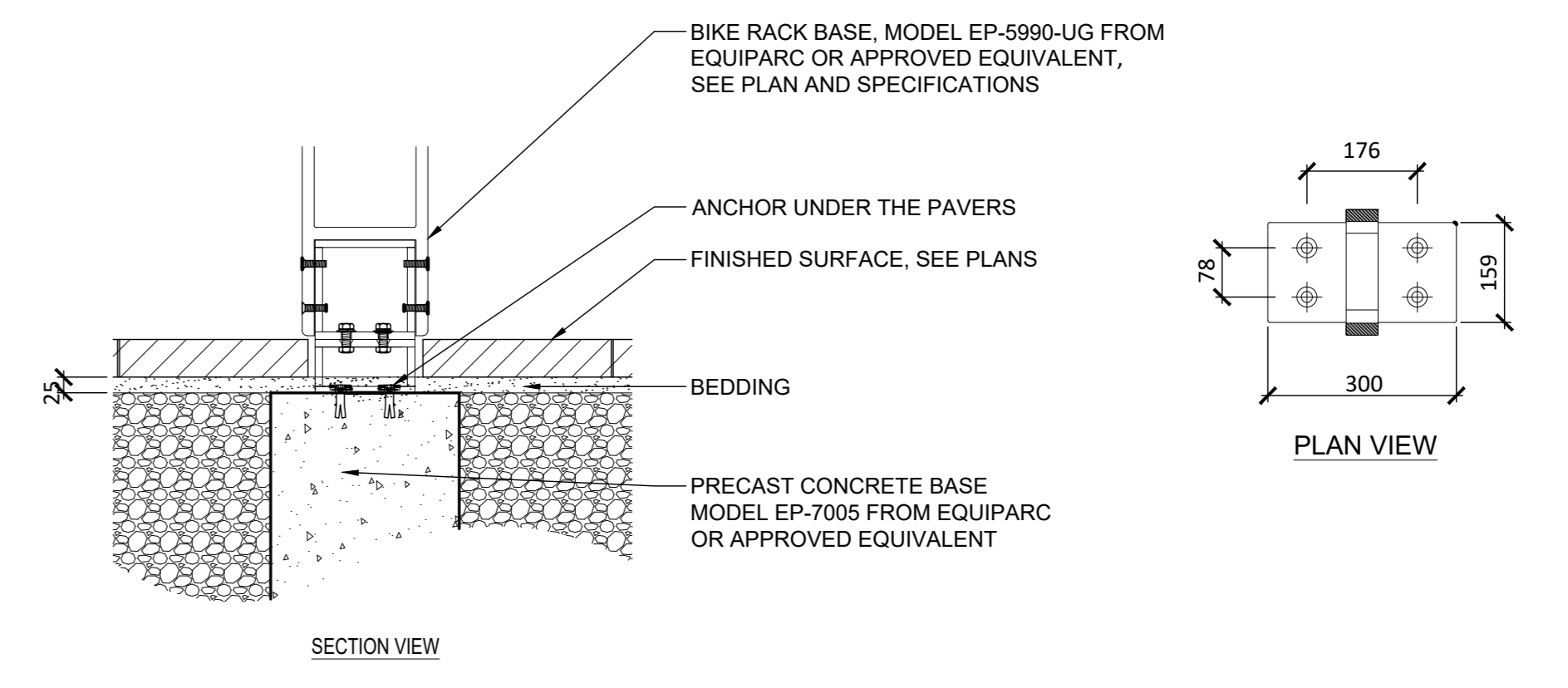
NOTES:

- CONCRETE CAST AT FACTORY;
- CONCRETE BENCH COLOR WILL BE (PROVIDE SAMPLE FOR APPROBATION);
- CONCRETE SURFACES MUST BE FINISHED WITH A LIGHT SANDBLAST;
- INSTALLATION ACCORDING TO MANUFACTURER'S RECOMMENDATIONS;
- CONTRACTOR MUST PROVIDE DRAWINGS SEALED AND SIGNED BY A CERTIFIED ENGINEER;
- PROVIDE, AT THE FACTORY, THE ANCHORING ELEMENTS IN ORDER TO CONNECT THE CONCRETE MODULES TO ONE ANOTHER. THE ATTACHMENT MUST NOT BE APPARENT. HAVE THE FIXING MODE APPROVED BY THE PROJECT MANAGER. PROVIDE A CAVURE IN THE CONCRETE MODULES;
- LEVEL ALL HORIZONTAL SURFACES AS TO KEEP A 1% SLOPE TO ALLOW WATER DRAINAGE



NOTES:

- PROVIDE ANTI-THEFT ANCHORING AND HARDWARE
- INSTALL ACCORDING TO MANUFACTURER'S RECOMMENDATIONS



DO NOT USE FOR CONSTRUCTION

Notes:

- The Contractor must verify all site existing conditions before beginning the work and inform the Project Director of any errors, omissions or contradictions.
- Existing grades indicated on the plan come from the survey provided by the owner.
- The Contractor must not cut down any existing vegetation without the approval of the Project Director.
- Implementation of the works on site must be approved by the Project Director.
- The Contractor must use the CAD file for implantation of all work.
- The contractor must verify the amounts specified in the schedule and notify the landscape architect of any errors, omissions or contradictions before the close of the bid.

PROJET | PAYSAGE
24 Mont-Royal O. Bureau 801. Montréal Québec H2T 2S2
T: 514 849 7700 F: 514 849 2027 info@projetpaysage.com

Professional seal

Project name
2026 Scott Street
File Number: 037-12-23-0019
Plan Number: #18076

Drawn by
CONSTRUCTION DETAILS

Scale **VARIABLE**

Designed by
P.L. Richard, S. Gallant
Checked by
A. Syedah, J. Néron-Houde
Approved by
S. Gallant
Date
June 2024

Project No.
AP-50

21-698

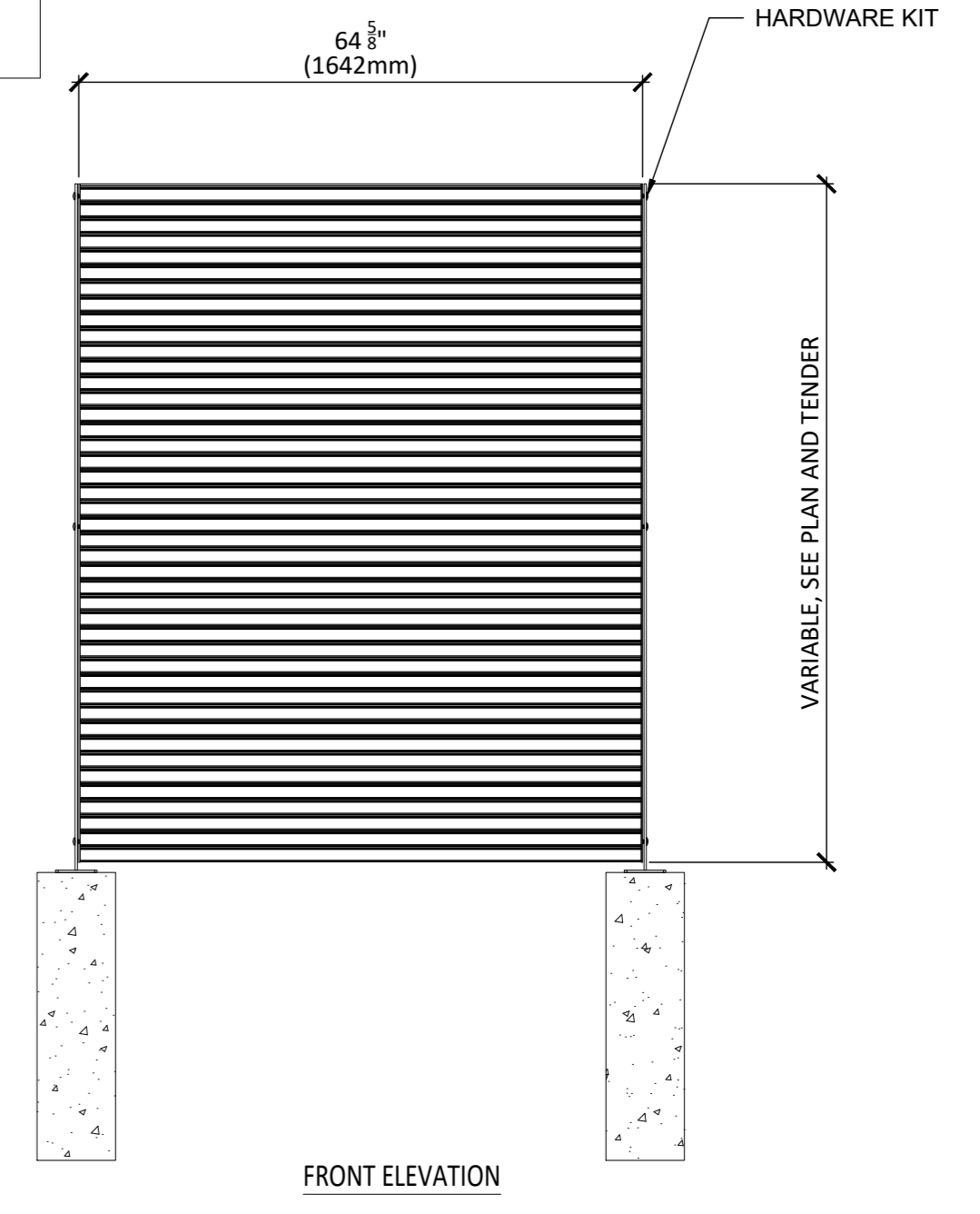
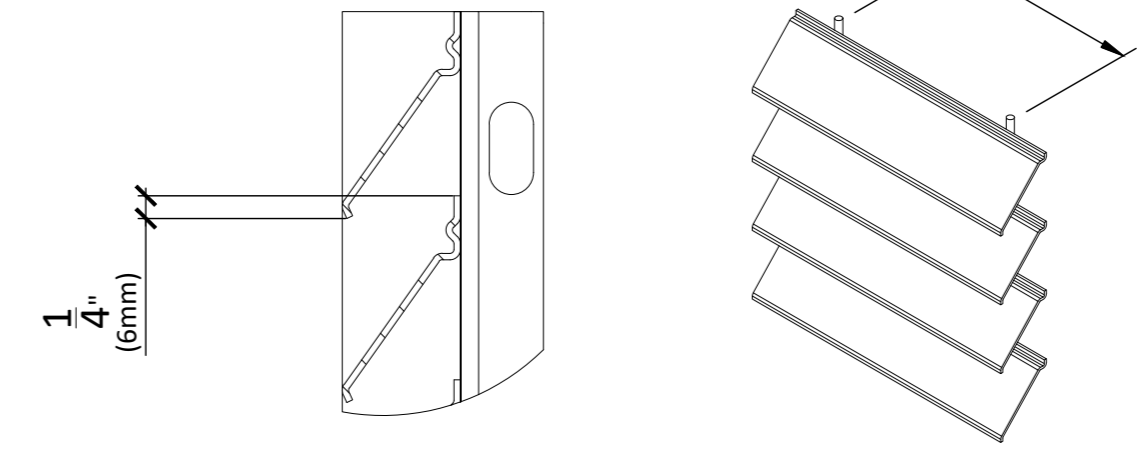
No.	Description	Appr.	Date
1	Site Plan Control	S.G.	23/02/22
2	Site Plan Control	P.L.	23/10/13
3	Site Plan Control	P.L.	24/03/25
4	Site Plan Control	P.L.	24/04/12
5	Site Plan Control	P.L.R.	22/06/25

NOTES:

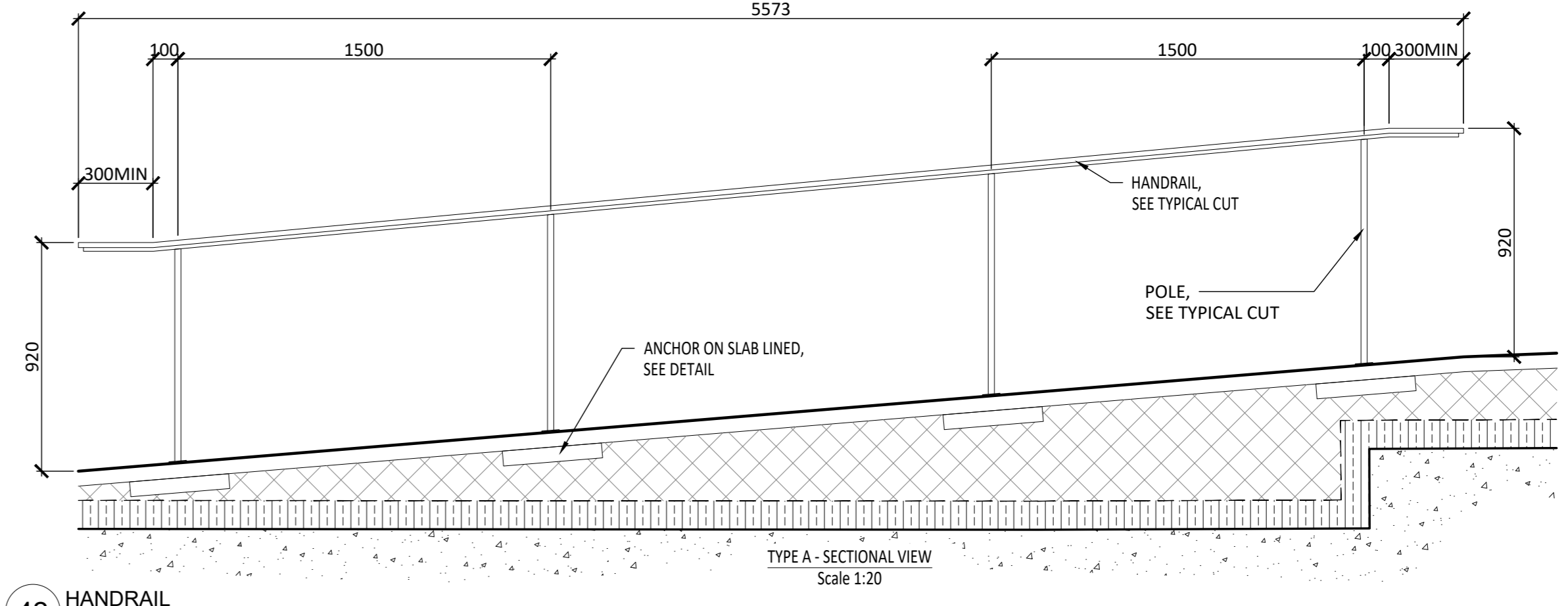
- PROVIDE WORKSHOP DRAWING TO THE LANDSCAPE ARCHITECT FOR APPROVAL
- INSTALLATION TO BE COMPLETED IN ACCORDANCE WITH MANUFACTURERS SPECIFICATIONS.
- SEE TENDER FOR COLOR SPECIFICATION

PANEL HEIGHT	NUMBER OF BRACKET KITS PER POST
VARIABLE, SEE PLAN	3

HORIZONTAL LOUVERS	0.08" THICK 2mm
VERTICAL FLAT	2" x 11 GA 50mm x 3mm
VERTICAL WIRES	3 GA Ø4.06mm



40 METAL FENCE TYP. 2.0M OF HEIGHT
Scale 1:20



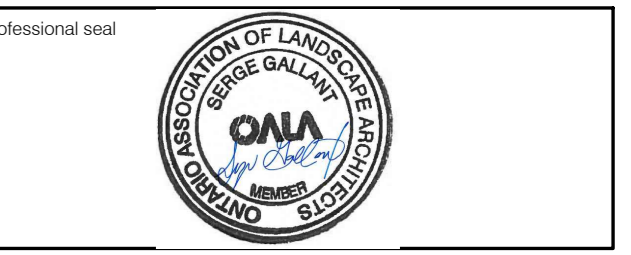
42 HANDRAIL
Scale 1:20

DO NOT USE FOR CONSTRUCTION

- Notes :**
- 1- The Contractor must verify all site existing conditions before beginning the work and inform the Project Director of any errors, omissions or contradictions.
 - 2- Existing grades indicated on the plan come from the survey provided by the owner.
 - 3- The Contractor must not cut down any existing vegetation without the approval of the Project Director.
 - 4- Implantation of the works on site must be approved by the Project Director.
 - 5- The Contractor must use the CAD file for implantation of all work.
 - 6- The contractor must verify the amounts specified in the schedule and notify the landscape architect of any errors, omissions or contradictions before the close of the bid.

PROJET | PAYSAGE

24 Mont-Royal O. Bureau 801 Montréal Québec H2T 2S2
T: 514 849 7700 F: 514 849 2027 info@projetpaysage.com



Project name:
2026 Scott Street
File Number: 037-12-23-0019
Plan Number: # 18076

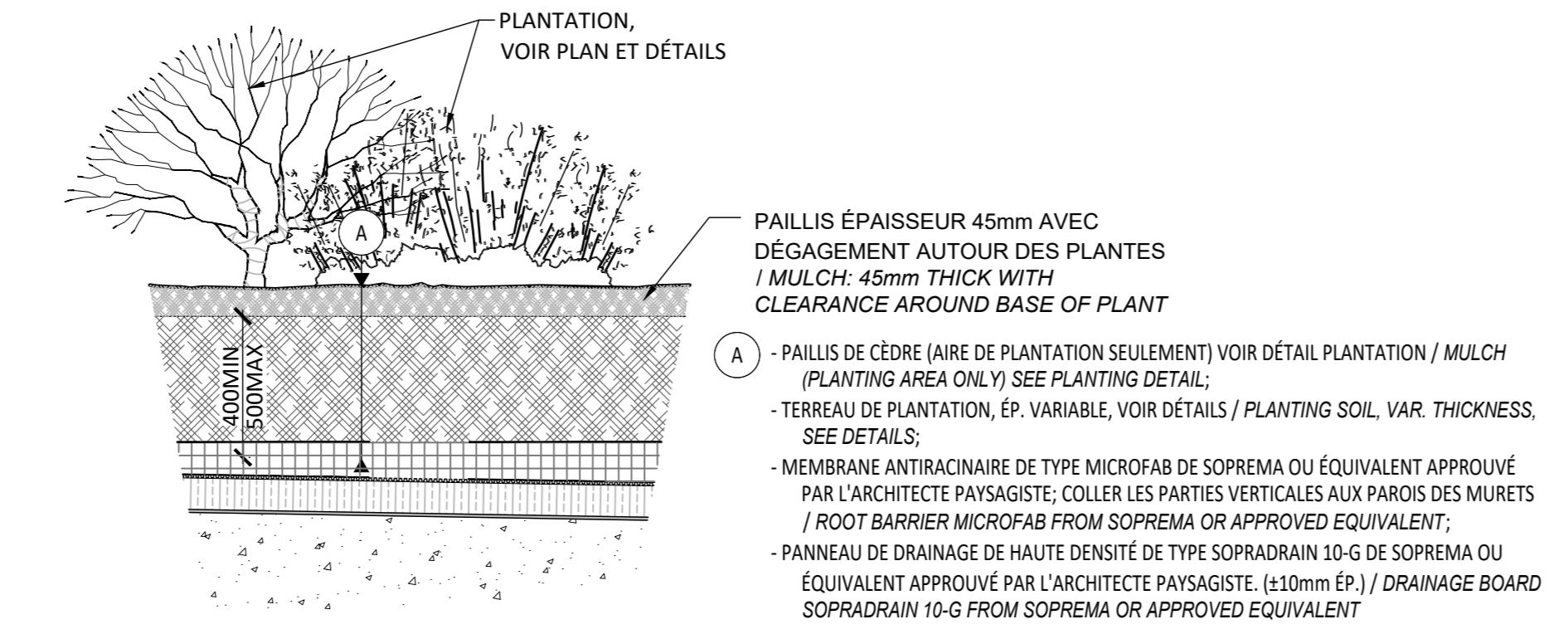
Drawing title:
CONSTRUCTION DETAILS
Scale: VARIABLE

Designed by: P.L. Richard, S. Gallant	Drawn by: A. Syedah, J. Néron-Houde
Approved by: S. Gallant	Date: June 2024
AP-51	
21-698	

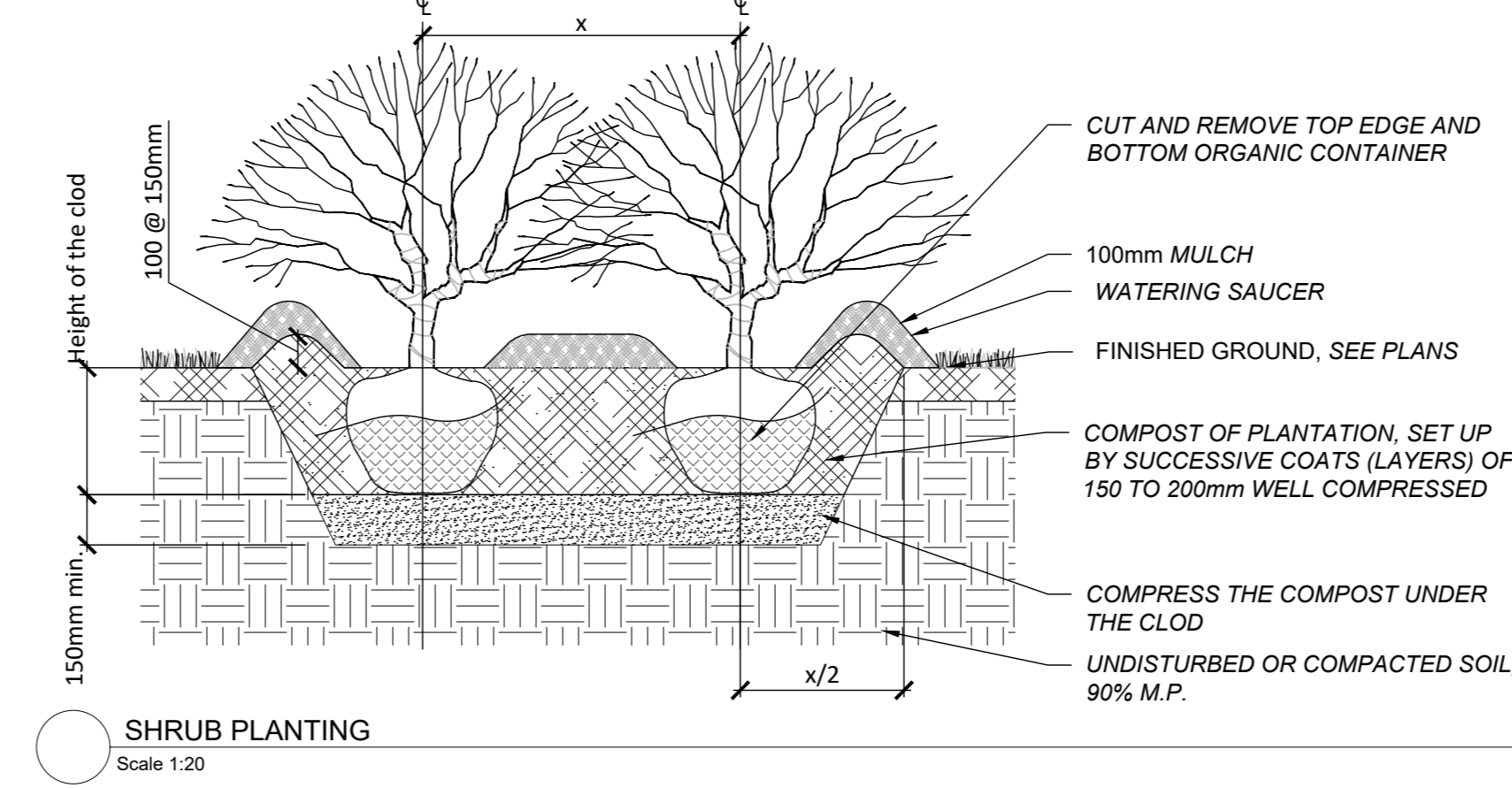
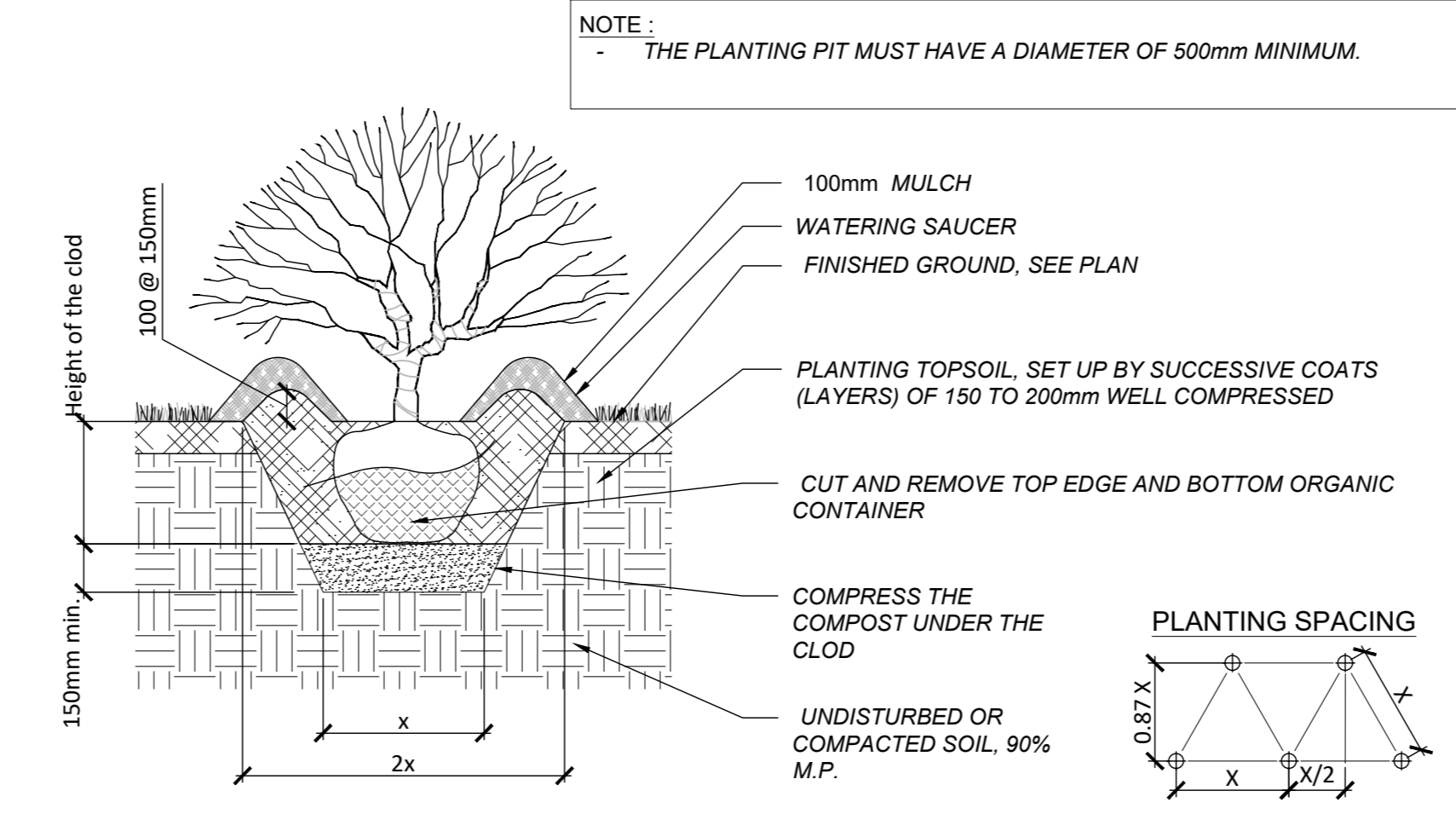
Revisions			
No	Description	Appr.	Date
1	Site Plan Control	S.G.	23/02/22
2	Site Plan Control	P.L.	23/10/13
3	Site Plan Control	P.L.	24/03/05
4	Site Plan Control	P.L.	24/04/12
5	Site Plan Control	P.L.R.	22/06/25

DO NOT USE FOR CONSTRUCTION

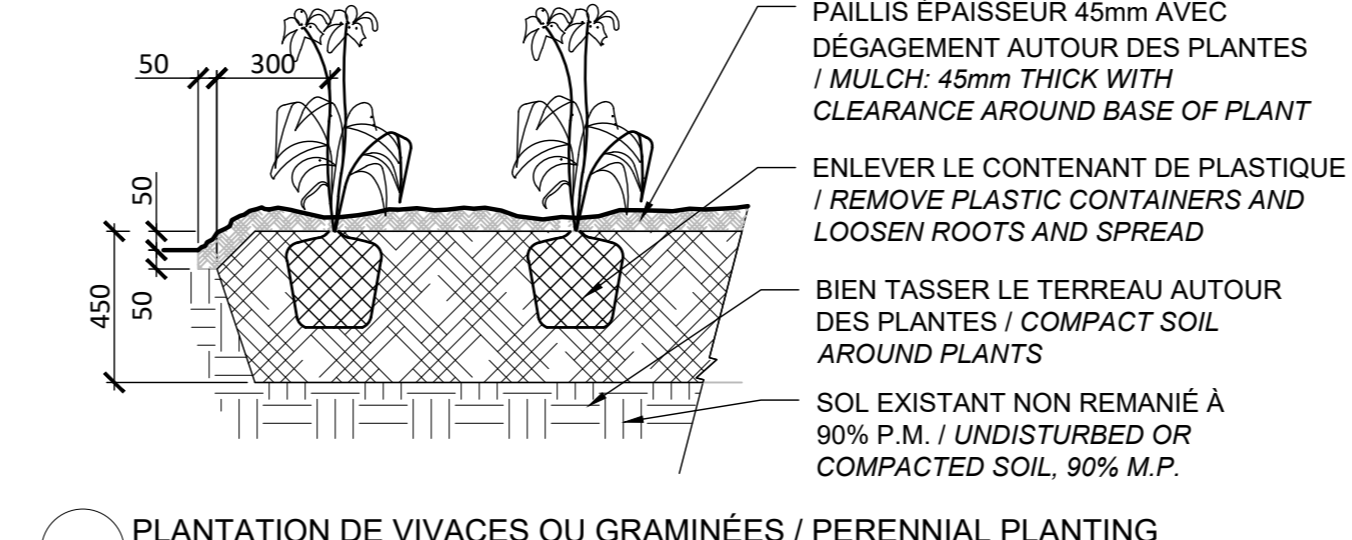
- NOTES:**
- IT IS THE RESPONSIBILITY OF THE CONTRACTOR TO VALIDATE THE THICKNESS OF THE SOIL WITH THE BUILDING STRUCTURE
 - WITH THE EXCEPTION OF TREES, THERE MUST BE A MAXIMUM OF 500MM OF SOIL AND/OR GRANULAR FOUNDATION ON THE CONCRETE SLAB. FILL ALL SPACE ABOVE THE REQUIRED SOIL AND/OR GRANULAR FOUNDATION THICKNESS WITH RIGID INSULATION TO REACH THE FINISH GRADE INDICATED ON THE PLANS.
 - MAKE SURE TO HAVE A MINIMUM AND MAXIMUM OF 100MM OF SOIL. FILL ALL SPACE ADJACENT TREE WITH RIGID INSULATION, AS TO RESPECT THE MAXIMUM OF 500MM OF SOIL.
 - WHEN PLANTING SHRUBS, MAKE SURE TO HAVE A MINIMUM OF 500M OF SOIL.
 - WHEN PLANTING PERENNIALS AND/OR ORNAMENTAL GRASSES, MAKE SURE TO HAVE A MINIMUM OF 500M OF SOIL.
 - FOR SOD, ENSURE YOU HAVE A MINIMUM OF 150MM OF SOIL.
 - REGARDLESS OF THE TYPE OF SURFACE (PLANTING, PAVERS, EDGES OR WALLS), INSTALL ALL THE DRAINAGE PANEL ON THE ENTIRE SURFACE OF THE SLAB AND IN A CONTINUOUS MANNER.



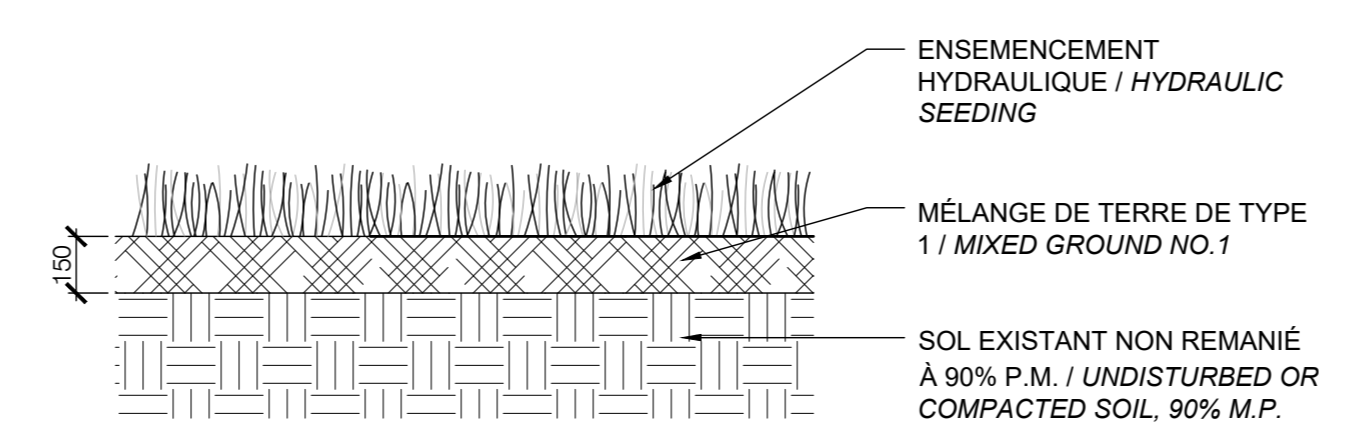
PLANTATION SUR DALLE / PLANTING ON CONCRETE SLAB
Echelle / Scale 1:20



- NOTE:**
- LES VIVACES SONT TOUJOURS PLANTÉES EN QUINCONCE (X, VOIR LISTE DE PLANTATION ET PLANS) / PERENNIALS ARE ALWAYS PLANTED IN STAGGERED ROWS (X, SEE LISTS OF PLANTING AND PLANS)
 - ARROSER ABONDAMMENT LE SOL AUSSITOT APRÈS LA PLANTATION / SPRAY THE GROUND WITH WATER IMMEDIATELY AFTER PLANTING

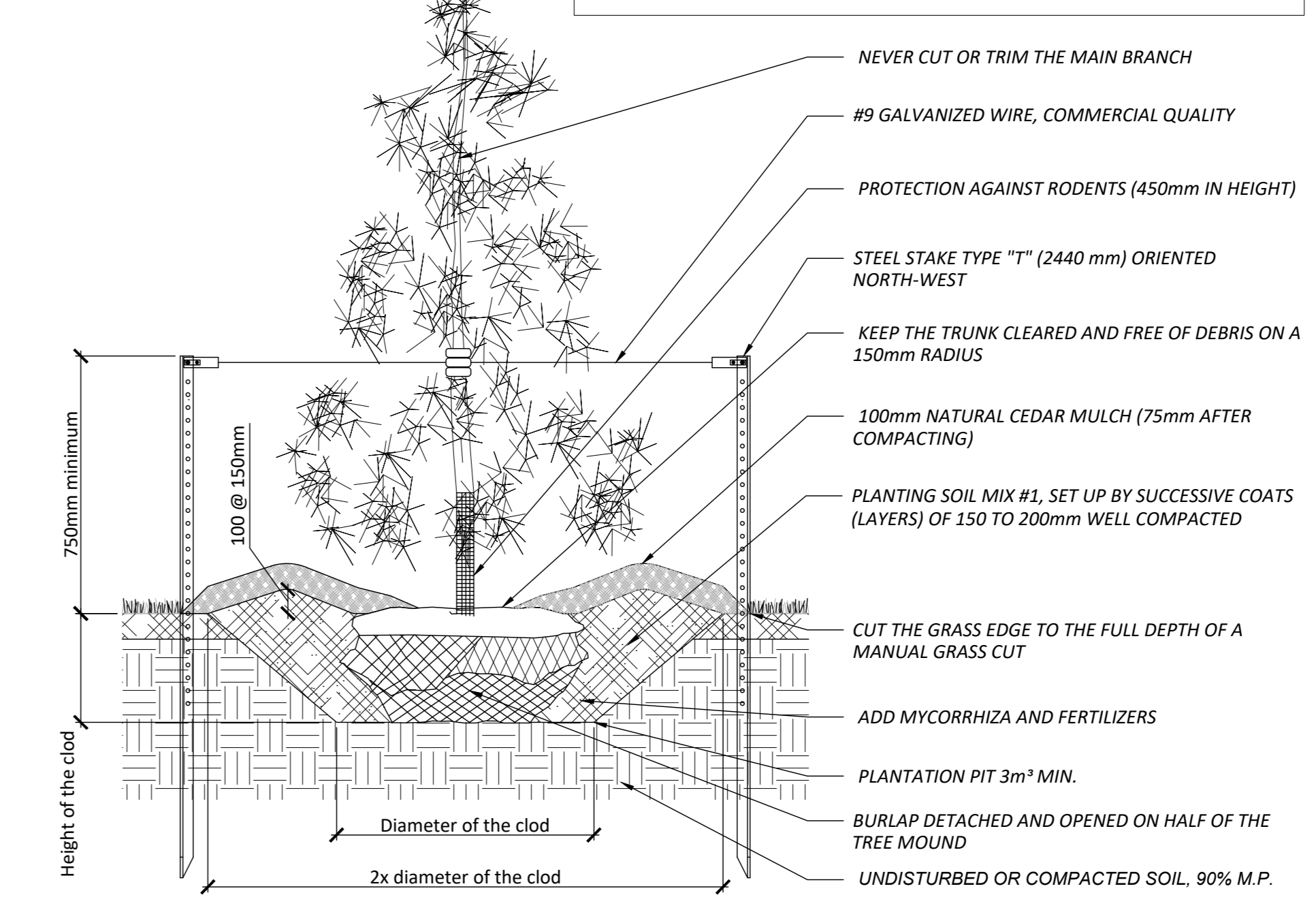


PLANTATION DE VIVACES OU GRAMINÉES / PERENNIAL PLANTING
Echelle / Scale 1:20



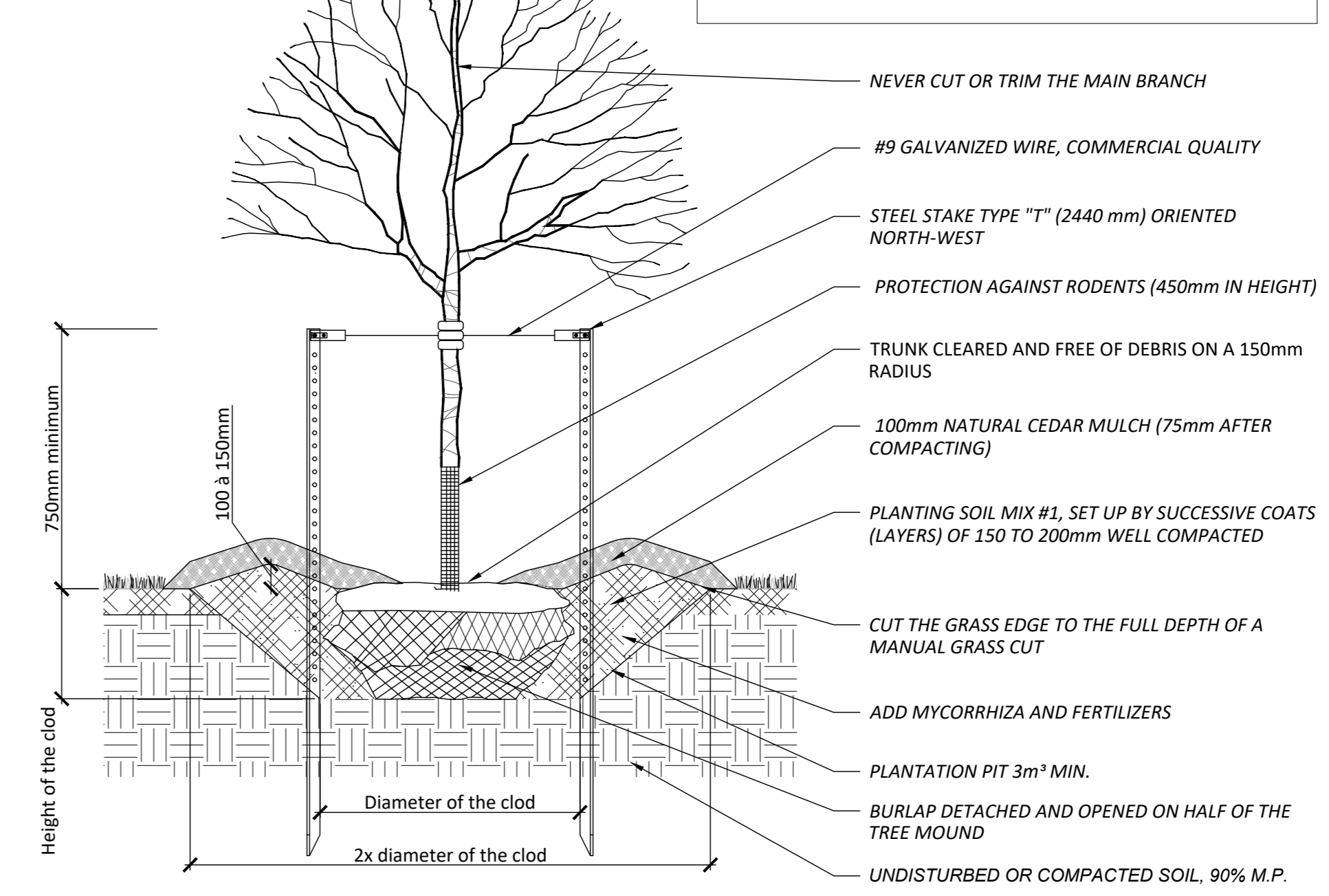
ENSEMENCEMENT HYDRAULIQUE / HYDRAULIC SEEDING
Echelle / Scale 1:20

- NOTE:**
THE PLANTING MUST HAVE A DIAMETER OF MIN 500mm
STAKES ARE REQUIRED ONLY WHEN THE EVERGREEN HAS A HEIGHT OF 150cm AND MORE



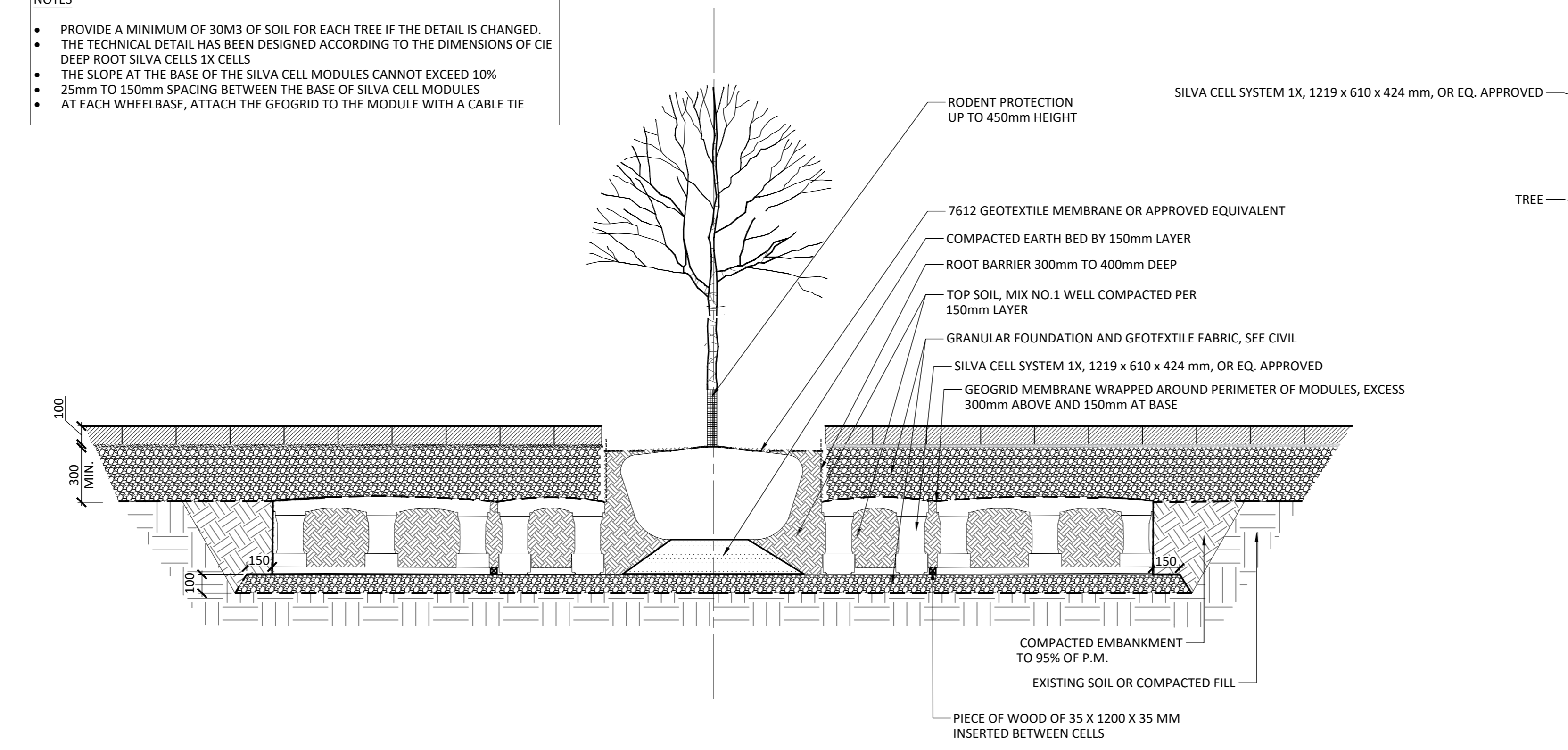
CONIFEROUS TREE PLANTING
Scale 1:20

- NOTE:**
- REMOVE THE UPPER HALF OF THE SPINDLE BASKET WITHOUT BREAKING OR DESTABILIZING THE TREE MOUND AND TRANSPORTING THE DEBRIS OFF SITE
 - REMOVE THE MAXIMUM OF ALL PACKAGING (UTE, ROPE, ETC.) AND TRANSPORT THE DEBRIS OFF SITE

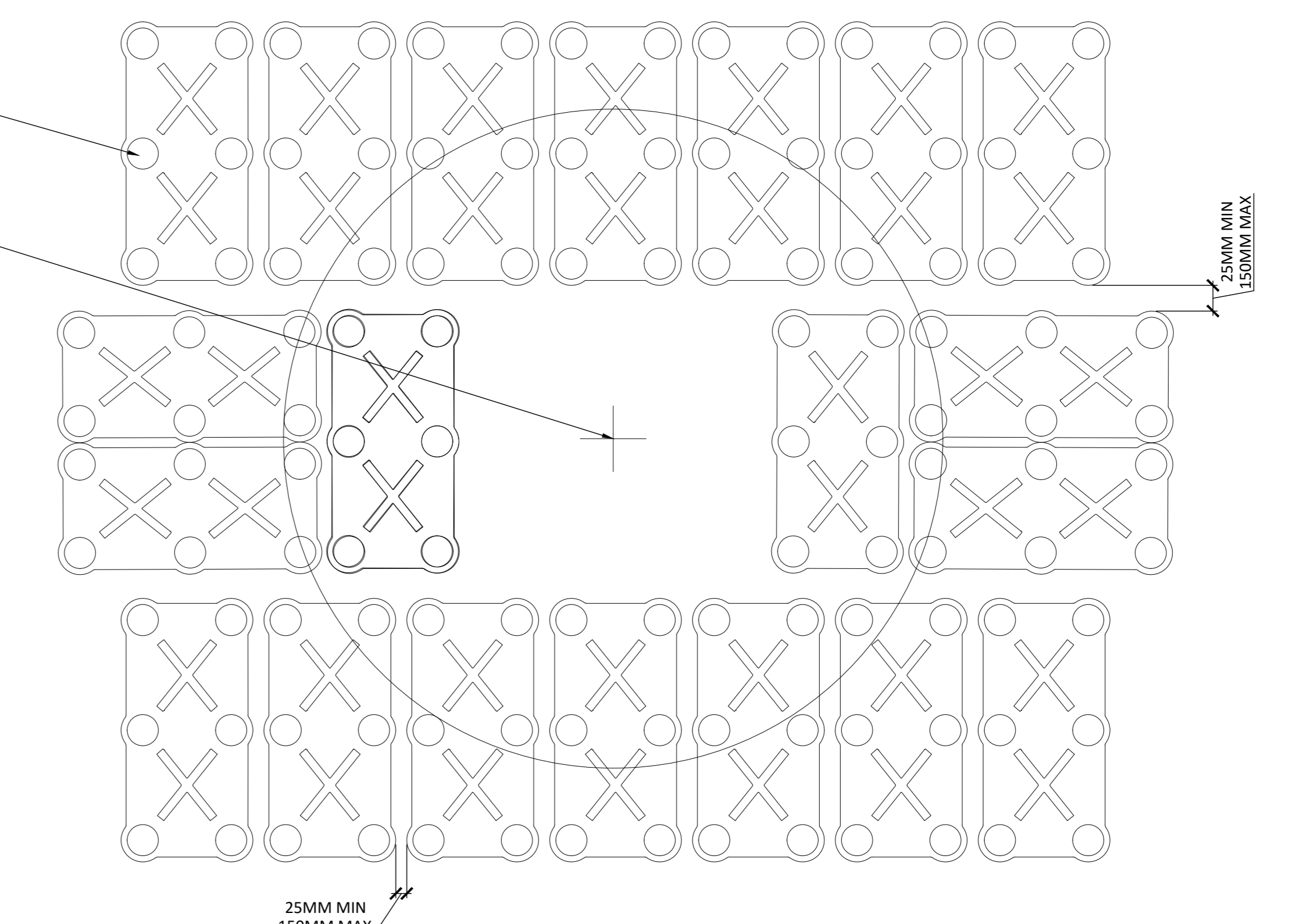


DECIDUOUS TREE PLANTING
Scale 1:20

- NOTES:**
- PROVIDE A MINIMUM OF 30M3 OF SOIL FOR EACH TREE IF THE DETAIL IS CHANGED.
 - THE TECHNICAL DETAIL HAS BEEN DESIGNED ACCORDING TO THE DIMENSIONS OF CIE DEEP ROOT SILVA CELLS 1X CELLS
 - THE SLOPE AT THE BASE OF THE SILVA CELL MODULES CANNOT EXCEED 10%
 - 25mm TO 150mm SPACING BETWEEN THE BASE OF SILVA CELL MODULES
 - AT EACH WHEELBASE, ATTACH THE GEOGRID TO THE MODULE WITH A CABLE TIE



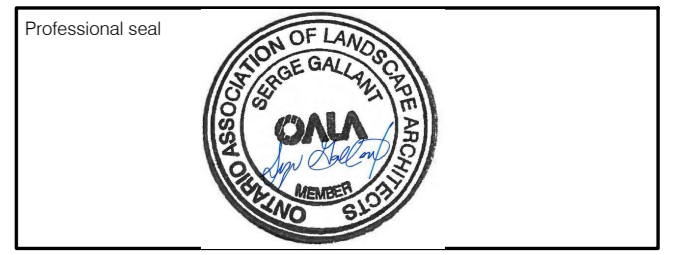
SOIL CELL SYSTEM FOR TREE PLANTING (DETAIL IN PROGRESS)
Echelle 1:20



PLAN VIEW OF THE CELLS

- Notes:**
- The Contractor must verify all site existing conditions before beginning the work and inform the Project Director of any errors, omissions or contradictions.
 - Existing grades indicated on the plan come from the survey provided by the owner.
 - The Contractor must not cut down any existing vegetation without the approval of the Project Director.
 - Implementation of the works on site must be approved by the Project Director.
 - The Contractor must use the CAD file for implantation of all work.
 - The contractor must verify the amounts specified in the schedule and notify the landscape architect of any errors, omissions or contradictions before the close of the bid.

PROJET | PAYSAGE
24 Mont-Royal O. Bureau 801, Montréal, Québec H2T 2S2
T: 514 849 7700 F: 514 849 2027 info@projetpaysage.com



Project name:
2026 Scott Street
File Number: 037-12-23-0019
Plan Number: #18076

Drawing title:
PLANTING DETAILS
Scale: **VARIABLE**

Designed by:
P.L. Richard, S. Gallant
A. Seyedah, J. Néron-Houde
Approved by:
S. Gallant
Date:
June 2024
AP-52
21-698