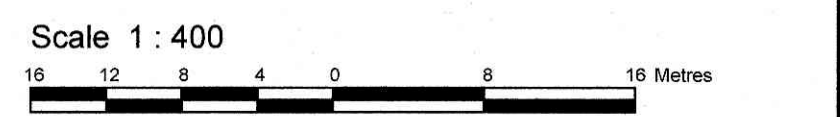


TOPOGRAPHICAL PLAN OF SURVEY OF
**PART OF LOT 11
 CONCESSION 3 (RIDEAU FRONT)**
 Geographic Township of Nepean
 CITY OF OTTAWA
 Surveyed by Annis, O'Sullivan, Vollebek Ltd.

Plan amended on January 24, 2024 to show location of trees along the southerly property limit.

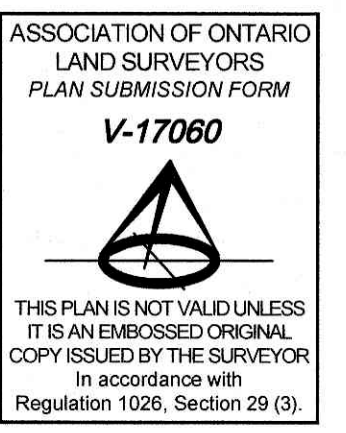
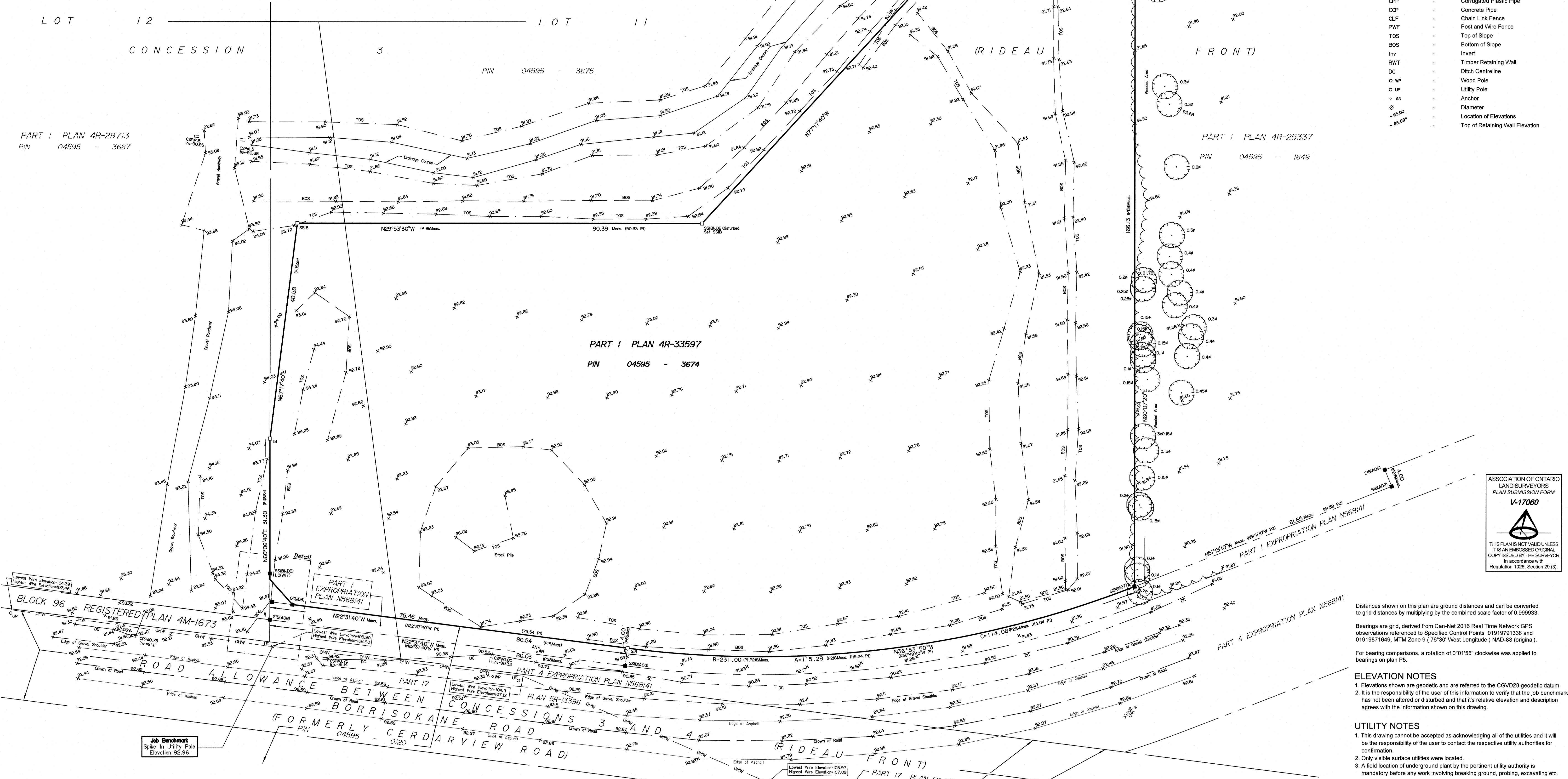
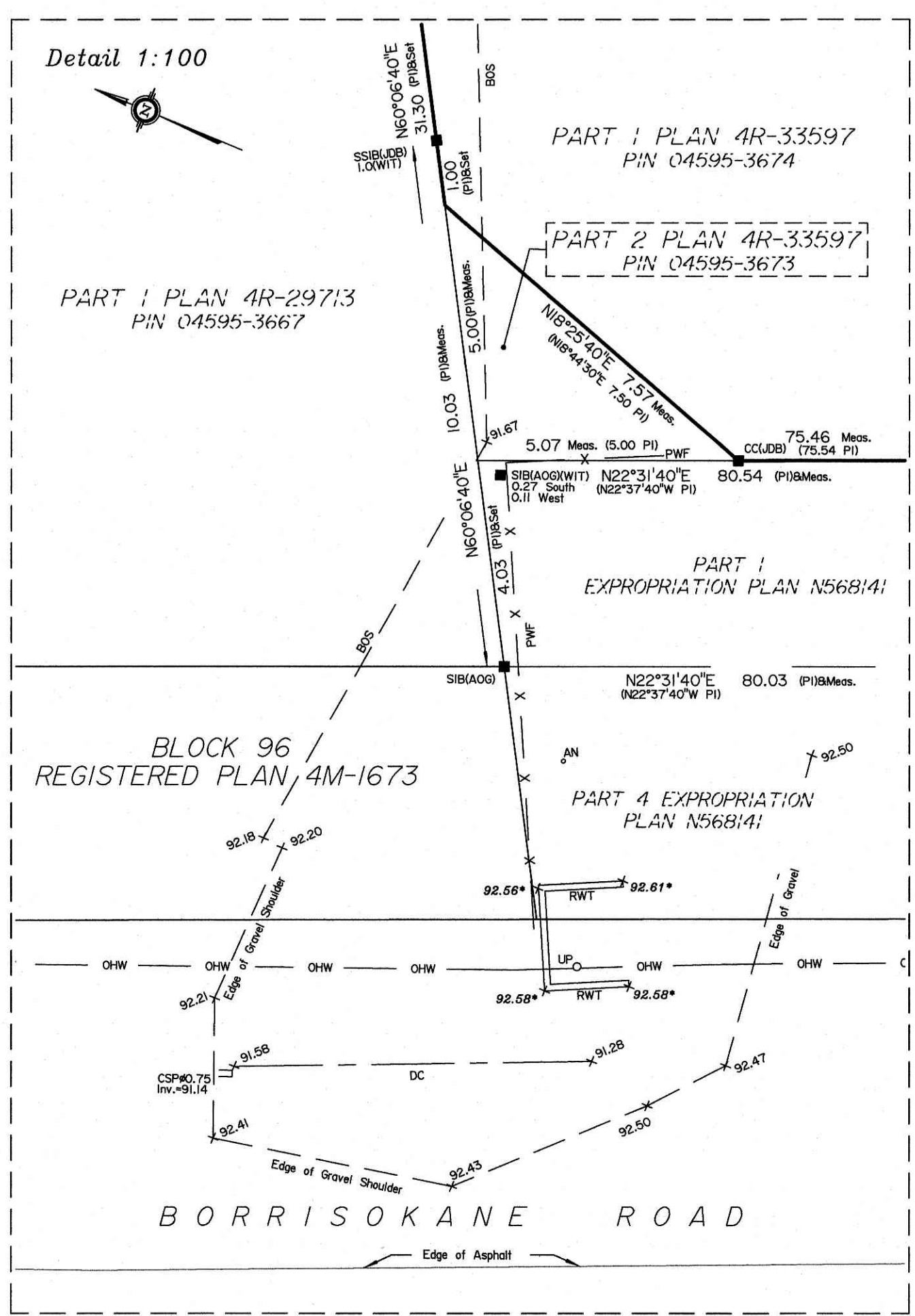


Metric
 DISTANCES SHOWN ON THIS PLAN ARE IN METRES AND
 CAN BE CONVERTED TO FEET BY DIVIDING BY 0.3048

Surveyor's Certificate
 I CERTIFY THAT:
 1. This survey and plan are correct and in accordance with the Survey Act and the Surveyors Act and the regulations made under them.
 2. The survey was completed on the 18th day of October, 2021.
 Date: Oct. 29, 2021
 E. H. Herveyer
 Ontario Land Surveyor

Notes & Legend

| Denotes | |
|----------|----------------------------------|
| —□— | Survey Monument Planted |
| —■— | Survey Monument Found |
| SSIB | Standard Iron Bar |
| IB | Short Standard Iron Bar |
| CC | Cast Cross |
| (WIT) | Witness |
| Meas. | Measured |
| (AOG) | Annis, O'Sullivan, Vollebek Ltd. |
| (P1) | Plan 4R-33597 |
| (P2) | Plan 4R-21085 |
| (P3) | Plan 4R-25337 |
| (P4) | Plan 4R-29713 |
| (P5) | Expropriation Plan N568141 |
| —OHW— | Overhead Wires |
| CSP | Corrugated Steel Pipe |
| CP | Corrugated Plastic Pipe |
| CCP | Concrete Pipe |
| CLF | Chain Link Fence |
| PWF | Post and Wire Fence |
| TOS | Top of Slope |
| BOS | Bottom of Slope |
| Invt | Invert |
| RWT | Timber Retaining Wall |
| DC | Ditch Centreline |
| ○ WP | Wood Pole |
| ○ UP | Utility Pole |
| + AN | Anchor |
| ○ | Diameter |
| + 65.00' | Location of Elevations |
| + 65.00' | Top of Retaining Wall Elevation |



Distances shown on this plan are ground distances and can be converted to grid distances by the combined scale factor of 0.999933.
 Bearings are grid, derived from Can-Net 2016 Real Time Network GPS observations referenced to Specified Control Points 019197912336 and 01919871649, MTM Zone 9 (76°30' West Longitude) NAD-83 (original).
 For bearing comparisons, a rotation of 0°01'55" clockwise was applied to bearings on plan P5.

ELEVATION NOTES
 1. Elevations shown are geodetic and are referred to the CGVD28 geodetic datum.
 2. It is the responsibility of the user of this information to verify that the job benchmark has not been altered or disturbed and that its relative elevation and description agrees with the information shown on this drawing.

UTILITY NOTES
 1. This drawing cannot be accepted as acknowledging all of the utilities and it will be the responsibility of the user to contact the respective utility authorities for confirmation.
 2. Only visible surface utilities were located.
 3. A field location of underground plant by the pertinent utility authority is mandatory before any work involving breaking ground, probing, excavating, etc.