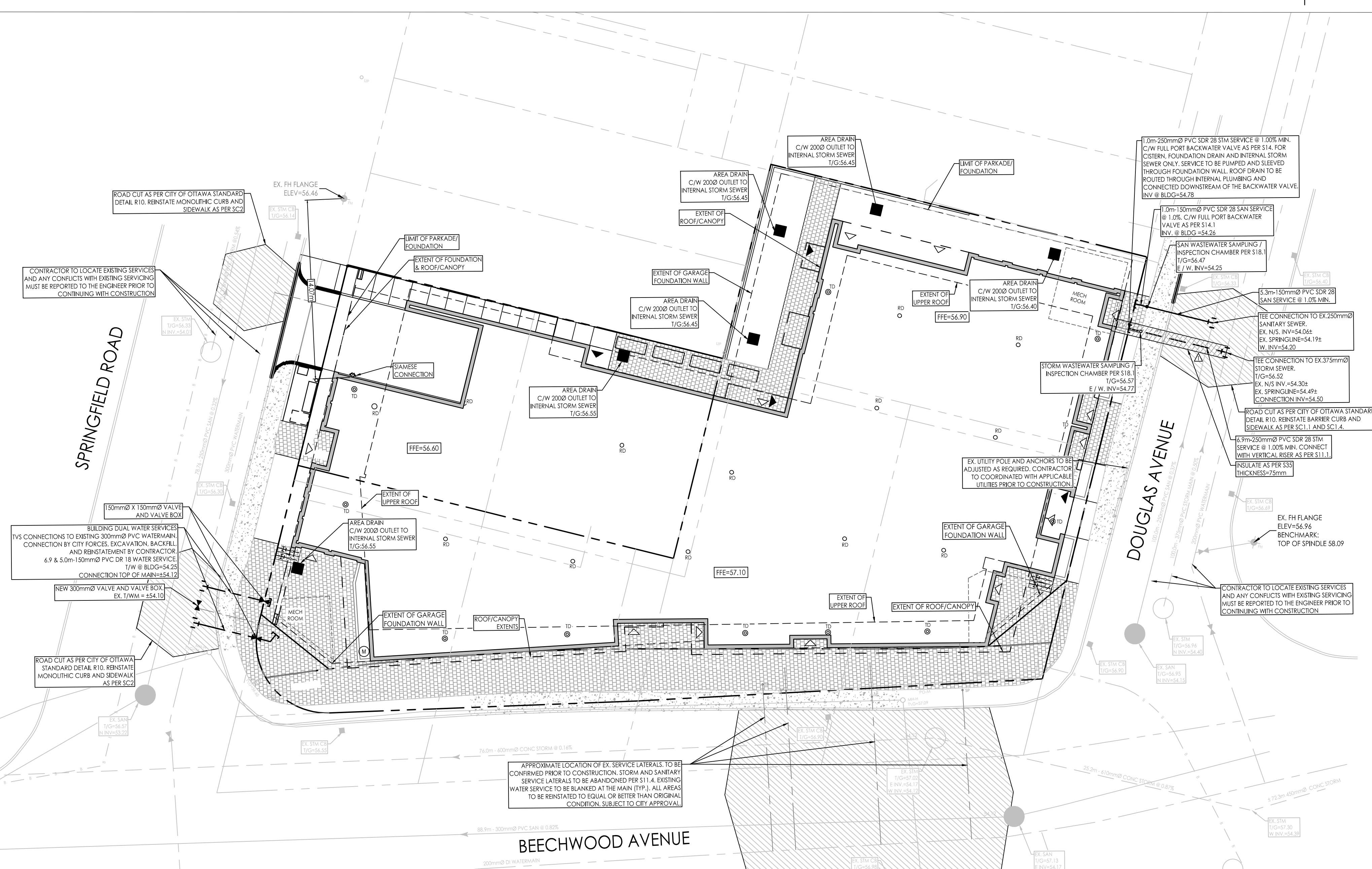
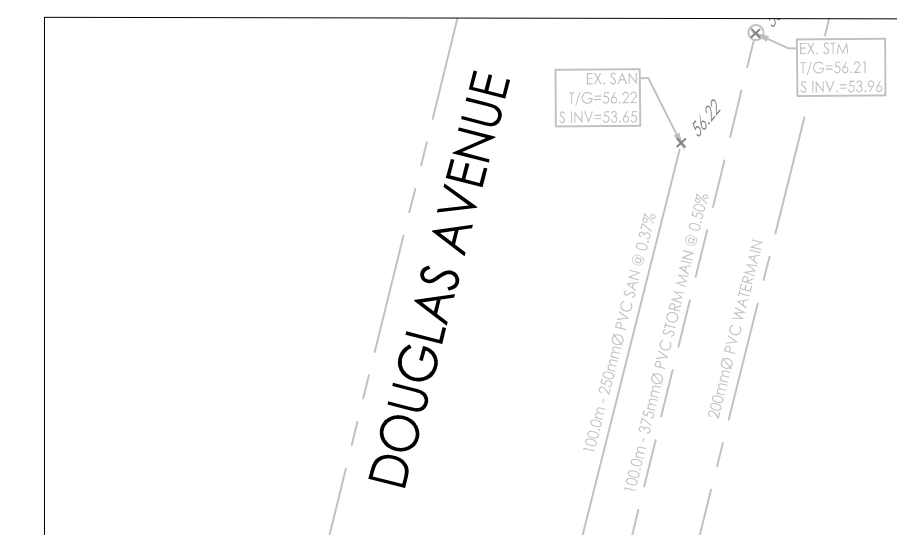
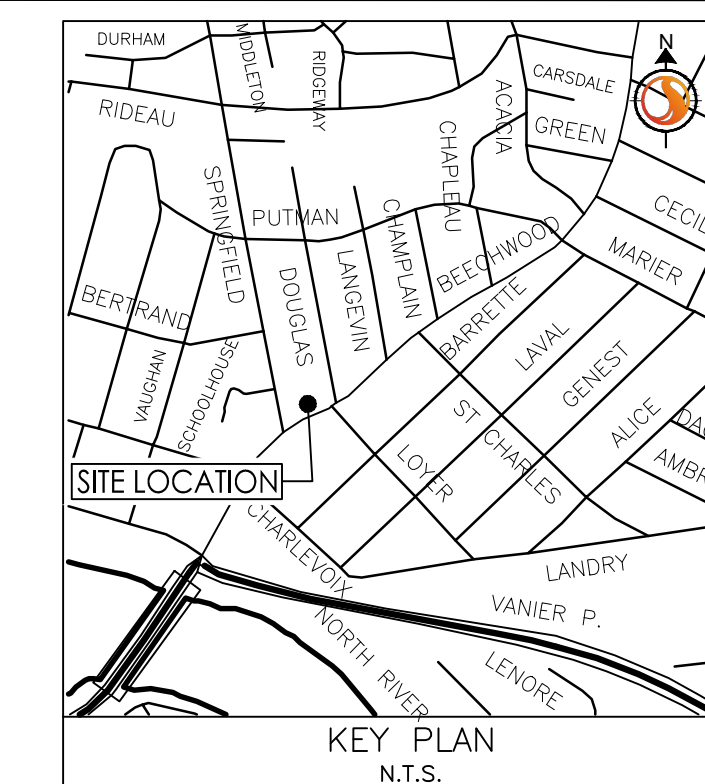




Copyright Reserved

The Contractor shall verify and be responsible for all dimensions. DO NOT scale the drawing - any errors or omissions shall be reported to Stantec without delay.
The Copyrights to all designs and drawings are the property of Stantec. Reproduction or use for any purpose other than that authorized by Stantec is forbidden.



GENERAL NOTES

- ALL WORK SHALL BE CARRIED OUT IN COMPLIANCE WITH THE ONTARIO OCCUPATIONAL HEALTH AND SAFETY ACT AND REGULATIONS FOR CONSTRUCTION PROJECTS.
- ALL WORK AND MATERIALS TO CONFORM WITH CURRENT MINISTRY OF THE ENVIRONMENT & ENERGY OF ONTARIO, CITY OF OTTAWA AND ONTARIO PROVINCIAL STANDARDS AND SPECIFICATIONS. LOCAL UTILITY STANDARDS AND MINISTRY OF TRANSPORTATION STANDARDS WILL APPLY WHERE REQUIRED.
- THE CONTRACTOR IS ADVISED THAT WORKS BY OTHERS MAY BE ONGOING DURING THE PERIOD OF THIS CONTRACT. THE CONTRACTOR SHALL COORDINATE CONSTRUCTION ACTIVITIES AND COORDINATION WITH ALL OTHER CONTRACTORS AND PREVENT CONSTRUCTION CONFLICTS.
- THE INFORMATION SHOWN FOR EXISTING UTILITIES WAS PROVIDED BY OTHERS. THE CONTRACTOR IS RESPONSIBLE FOR LOCATING AND PROTECTING ALL UTILITIES DURING CONSTRUCTION. ALL EXISTING UTILITIES MUST BE LOCATED AND VERIFIED BY EACH UTILITY PRIOR TO COMMENCEMENT OF WORK. ANY VARIANCE IS TO BE IMMEDIATELY REPORTED TO THE ENGINEER. LOST TIME DUE TO FAILURE OF THE CONTRACTOR TO CONFIRM UTILITY LOCATIONS AND NOTIFY THE ENGINEER OF POSSIBLE CONFLICTS PRIOR TO CONSTRUCTION WILL BE AT THE CONTRACTOR'S EXPENSE.
- ALL CONSTRUCTION SHALL BE CARRIED OUT IN ACCORDANCE WITH THE RECOMMENDATIONS MADE IN THE GEOTECHNICAL REPORT.
- THE CONTRACTOR IS RESPONSIBLE FOR OBTAINING ALL PERMITS REQUIRED AND TO BEAR THE COST OF SAME INCLUDING WATER PERMIT AND ASSOCIATED COSTS.
- ALL DISTURBED AREAS SHALL BE RESTORED TO EQUAL OR BETTER CONDITION TO THE SATISFACTION OF THE ENGINEER AND THE CITY. PAVEMENT RESTORATION FOR SERVICE AND UTILITY CUTS SHALL BE IN ACCORDANCE WITH CITY STANDARD R10, OPS5 509.010 AND OPS5 310.
- BENCHMARKS: IT IS THE RESPONSIBILITY OF THE CONTRACTOR TO VERIFY THAT THE SITE BENCHMARK(S) HAS NOT BEEN ALTERED OR DISTURBED AND THAT ITS RELATIVE ELEVATION AND DESCRIPTION AGREES WITH THE INFORMATION SHOWN ON DRAWING GP-1.
- THE CONTRACTOR SHALL PROVIDE TO THE ENGINEER 1 (ONE) SET OF AS CONSTRUCTED SITE SERVICING, GRADING, AND SITE ELECTRICAL DWGS.
- EXISTING STORM AND SANITARY SERVICE LATERALS TO BE ABANDONED PER S11.4. EXISTING WATER SERVICE TO BE BLANKED AT THE MAIN (TYP.).
- TOPOGRAPHIC SURVEY SUPPLIED BY ANNIS, O'SULLIVAN, VOLLEBEK LTD. DATED JULY 21, 2022 - FILE NO. 21968-21.
BENCHMARK: FIRE HYDRANT TOP OF SPINDLE EAST OF DOUGLAS AVENUE WITH AN ELEVATION OF 58.09m.
ELEVATIONS ARE GEODETIC AND REFERRED TO CGVD25 GEODETIC DATUM. DERIVED FROM CITY OF OTTAWA BENCHMARK NO. OH. 107 WITH AN ELEVATION OF 71.945m.
- SITE PLAN PREPARED BY PROJECT1 STUDIO INC., PROVIDED MAY 15, 2024 DRAWING SP-01.
- GEOTECHNICAL INVESTIGATION PG6484-1 PREPARED BY PATERSON GROUP DATED JANUARY 13, 2023. GEOTECHNICAL INFORMATION PRESENTED ON THESE DRAWINGS MAY BE INTERPOLATED FROM THE ORIGINAL REPORT. REFER TO ORIGINAL GEOTECHNICAL REPORT FOR ADDITIONAL DETAILS AND TO VERIFY ASSUMPTIONS MADE HERE.

WATER SUPPLY SERVICING

- THE CONTRACTOR SHALL CONSTRUCT WATERMAIN, WATER SERVICES, CONNECTIONS & APPURTENANCES AS PER CITY OF OTTAWA SPECIFICATIONS & SHALL CO-ORDINATE AND PAY ALL RELATED COSTS INCLUDING THE COST OF CONNECTION, INSPECTION & DENECTION BY CITY PERSONNEL.
- WATER SERVICE TO BE INSTALLED 1.0m OFF BUILDING FACE. STAND POST TO BE INSTALLED AT PROPERTY LINE AS SHOWN ON DRAWING.
- WATERMAIN TRENCH AND BEDDING SHALL BE IN ACCORDANCE WITH CITY OF OTTAWA STD. W17 UNLESS OTHERWISE SPECIFIED. BEDDING AND COVER MATERIAL TO BE SPECIFIED BY PROJECT GEOTECHNICAL CONSULTANT.
- SERVICE CONNECTIONS SHALL BE INSTALLED A MINIMUM OF 2400mm FROM ANY CATCHBASIN, MANHOLE OR OBJECT THAT MAY CONTRIBUTE TO FREEZING. THERMAL INSULATION SHALL BE INSTALLED ON ALL PROPOSED CBS ON THE W/M STREET SIDE WHERE 2400mm SEPARATION CANNOT BE ACHIEVED (AS PER CITY OF OTTAWA W22 & W23).
- CATHODIC PROTECTION TO BE SUPPLIED ON METALLIC FITTINGS AS PER CITY OF OTTAWA W40 AND W42.
- ALL WATERMAIN BENDS, JOINTS, TEES AND PLUGS SHALL BE MECHANICALLY RESTRAINED IN ACCORDANCE WITH CITY OF OTTAWA STANDARDS.
- WATERMAIN TO HAVE MIN. 2.4m COVER. WHERE WATERMAIN COVER IS LESS THAN 2.4m, INSULATION TO BE SUPPLIED IN ACCORDANCE WITH CITY STANDARD W22.
- WATERMANS MUST COMPLY WITH MINIMUM HORIZONTAL AND VERTICAL CLEARANCES IN ACCORDANCE WITH LOCAL PROVINCIAL GUIDELINES AND THE APPLICABLE BUILDING AND PLUMBING CODE. WHERE HORIZONTAL SEPARATIONS CANNOT BE ACHIEVED, APPROVAL FROM THE ENGINEER MUST BE OBTAINED AND A MINIMUM 500mm VERTICAL SEPARATION MUST BE MAINTAINED.
- ALL WATERMANS SHALL BE BACTERIOLOGICALLY TESTED IN ACCORDANCE WITH THE CITY OF OTTAWA AND ONTARIO GUIDELINES. ALL CHLORINATED WATER TO BE DISCHARGED AND PREPARED TO ACCEPTABLE LEVEL PRIOR TO DISCHARGE. ALL DISCHARGED WATER MUST BE CONTROLLED AND TREATED SO AS NOT TO ADVERSELY AFFECT THE ENVIRONMENT. IT IS THE RESPONSIBILITY OF THE CONTRACTOR TO ENSURE THAT ALL MUNICIPAL AND/OR PROVINCIAL REQUIREMENTS ARE FOLLOWED.

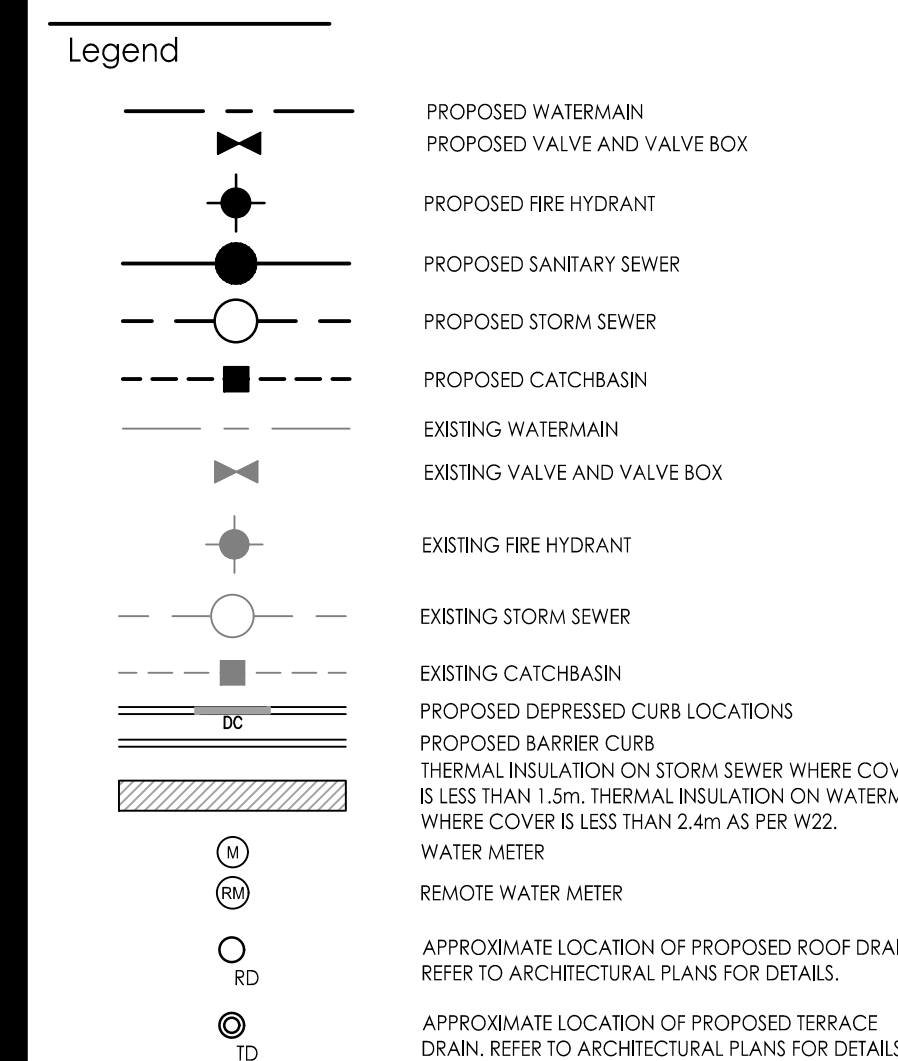
STORM AND SANITARY SEWERS

- SEWER TRENCH SHALL CONSIST OF CLASS 'B' BEDDING PER CITY OF OTTAWA STANDARDS S6 AND S7. COMPACTION SHALL BE A MINIMUM OF 95% STANDARD PROCTOR DENSITY.
- FOR CONSTRUCTION DETAILS NOT SHOWN ON PLANS, REFERENCE SHALL BE MADE TO THE ONTARIO PROVINCIAL STANDARDS DRAWINGS AND CITY OF OTTAWA STANDARDS.
- SERVICES TO BUILDINGS TO BE TERMINATED 1.0m FROM THE FACE OF BUILDING UNLESS OTHERWISE NOTED.
- THE CONTRACTOR IS TO PROVIDE CCTV CAMERA INSPECTIONS OF ALL SANITARY AND STORM SEWERS, INCLUDING PICTORIAL REPORT. ONE (1) CD COPY AND TWO (2) VIDEO TAPES IN A FORMAT SATISFACTORY TO THE ENGINEER. ALL SEWERS ARE TO BE FLUSHED PRIOR TO CAMERA INSPECTION. ASPHALT WEAR COURSE SHALL NOT BE PLACED UNTIL THE VIDEO INSPECTION OF SEWERS & NECESSARY REPAIRS HAVE BEEN CARRIED OUT TO THE SATISFACTION OF THE CONSULTANT.
- LASER ALIGNMENT CONTROL TO BE UTILIZED ON ALL SEWER INSTALLATIONS.
- FROST PROTECTION PER CITY OF OTTAWA STANDARD DRAWING W22 WHERE THERE IS LESS THAN 2.0m OF COVER ABOVE THE SEWER SERVICES.
- CONTRACTOR SHALL PERFORM LEAKAGE TESTING, IN THE PRESENCE OF THE CONSULTANT, FOR SANITARY SEWERS IN ACCORDANCE WITH OPS5 410 AND OPS5 407. A COPY OF THE INSPECTION REPORT SHALL BE SUBMITTED TO THE CONSULTANT FOR REVIEW.
- STORM SERVICE CONNECTION AS PER CITY STD DWG S11.1; SANITARY SERVICE CONNECTION AS PER CITY STD DWG S11.1. SERVICES TO CONNECT TO THE SPRINGLINE OF THE MAIN UNLESS OTHERWISE NOTED.
- CONTRACTOR TO VERIFY EXISTING SEWERS AND INVERTS, AND REPORT ANY DISCREPANCIES TO SITE ENGINEER BEFORE PROCEEDING WITH CONSTRUCTION.

SEWER AND WATERMAIN CROSSING TABLE							
CROSSING	STM INV	STM OBV	SAN INV	SAN OBV	WTR TOP	WTR BTM	NOTES
1	54.72	54.97	54.06	54.31			INSULATE STORM AS PER S35

SCHEDULE OF ROOF RELEASE RATES						
DRAINAGE AREA ID	DRAIN TYPE	# DRAINS	2YR HEAD (m)	100 YEAR HEAD (m)	2YR RELEASE RATE (L/s)	100 YEAR RELEASE RATE (L/s)
BLDG	WATTS R1100 ACCUTROL (25% OPEN)	12	0.08	0.14	8.8	10.8

PROPOSED 3 STOREY APARTMENT BUILDING
FF=VARIES (REFER TO GRADING PLAN)
P1 PARKING=53.25
USF=152.48
REFER TO ARCHITECTURAL PLANS FOR TOP ELEVATIONS, TOP TO REMAIN MIN. 0.15m ABOVE FINISHED GRADE.
MAX 100-YR ROOF RELEASE RATE = 10.8 L/s
TOTAL PEAK FLOW TO CISTERN = 27.7 L/s
MAX 100-YR CISTERN RELEASE RATE = 12.2 L/s
CISTERN VOLUME REQUIRED = 10 m³
SLUMP PUMP REQUIRED TO DISCHARGE INTERNAL STORM SEWER AND FOUNDATION DRAIN. SLUMP PUMP REQUIRED FOR PARKADE LEVEL 1. REFER TO MECHANICAL DRAWINGS FOR DETAILS.
PROPOSED BUILDING TO BE EQUIPPED WITH PRESSURE REDUCING VALVES AS PER THE ONTARIO BUILDING CODE.



Revision	By	Appd.	YY.MM.DD
2	WJ	DT	24.05.27
1	TM	DT	23.06.12

File Name:	TM	KK	TM	23.03.15
160401784 DB.dwg	Dwn.	Chkd.	Dgn.	YY.MM.DD

Permit-Seal

Client/Project
Project1 Studio

47 BEECHWOOD AVENUE
OTTAWA, ONTARIO, CANADA

Title SITE SERVICING PLAN

\\s01\projects\2024\160401784\design\dwg\160401784 DB.dwg
2024/05/27 2:59 PM WJ