

LEGEND

FFL	FINISHED FLOOR ELEVATION
TOF	TOP OF FOUNDATION
BFL	BASEMENT FLOOR ELEVATION
USF	UNDERSIDE OF FOOTING
---	PROPERTY LINE
CB	CATCH-BASIN
MH	STORM MANHOLE
MH	SANITARY MANHOLE
CS	CURB STOP & STANDPOST
SAN	SANITARY SEWER
ST	STORM SEWER
WS/WW	WATER SERVICE/WATERMAIN
OBV	OBVERT OF PIPE
SPL	SPRINGLINE OF PIPE
INV	INVERT OF PIPE
---	EXISTING GRADE ELEVATION
---	150mm BARRIER CURB



No.	DATE	REVISION
5	JUL 3-24	RE-ISSUED FOR APPROVAL
4	MAY 21-24	RE-ISSUED FOR APPROVAL
3	APR 3-23	RE-ISSUED FOR APPROVAL
2	MAY 16-22	ISSUED FOR APPROVAL
1	MAY 5-22	ISSUED FOR COORDINATION

D. B. GRAY ENGINEERING INC.
 700 Long Point Circle
 Ottawa, Ontario
 613-425-8044
 d.gray@dbgrayengineering.com

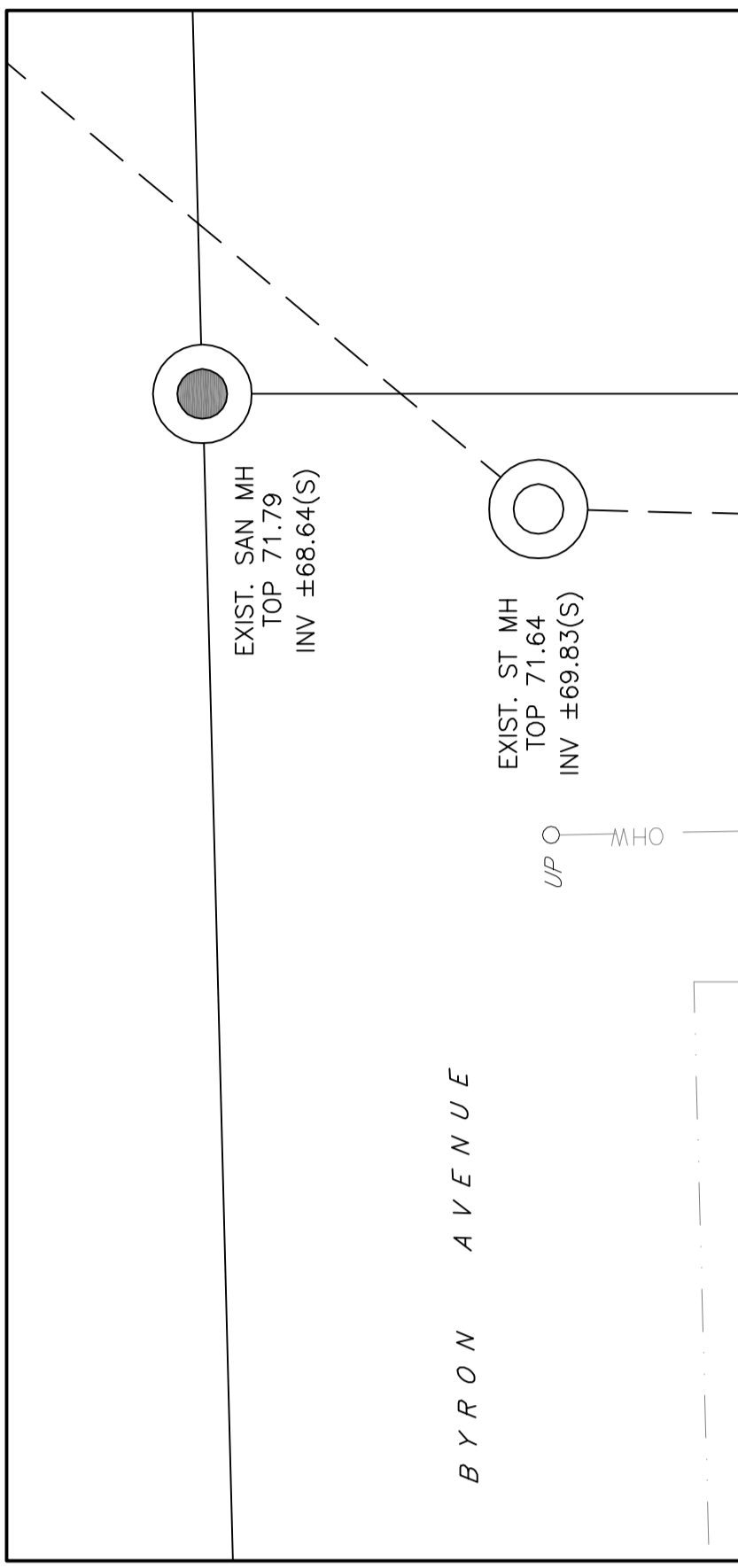
PROPOSED 3.5-STORY APARTMENT BUILDING
 436 ATHLONE AVENUE
 OTTAWA, ONTARIO

SITE SERVICING PLAN

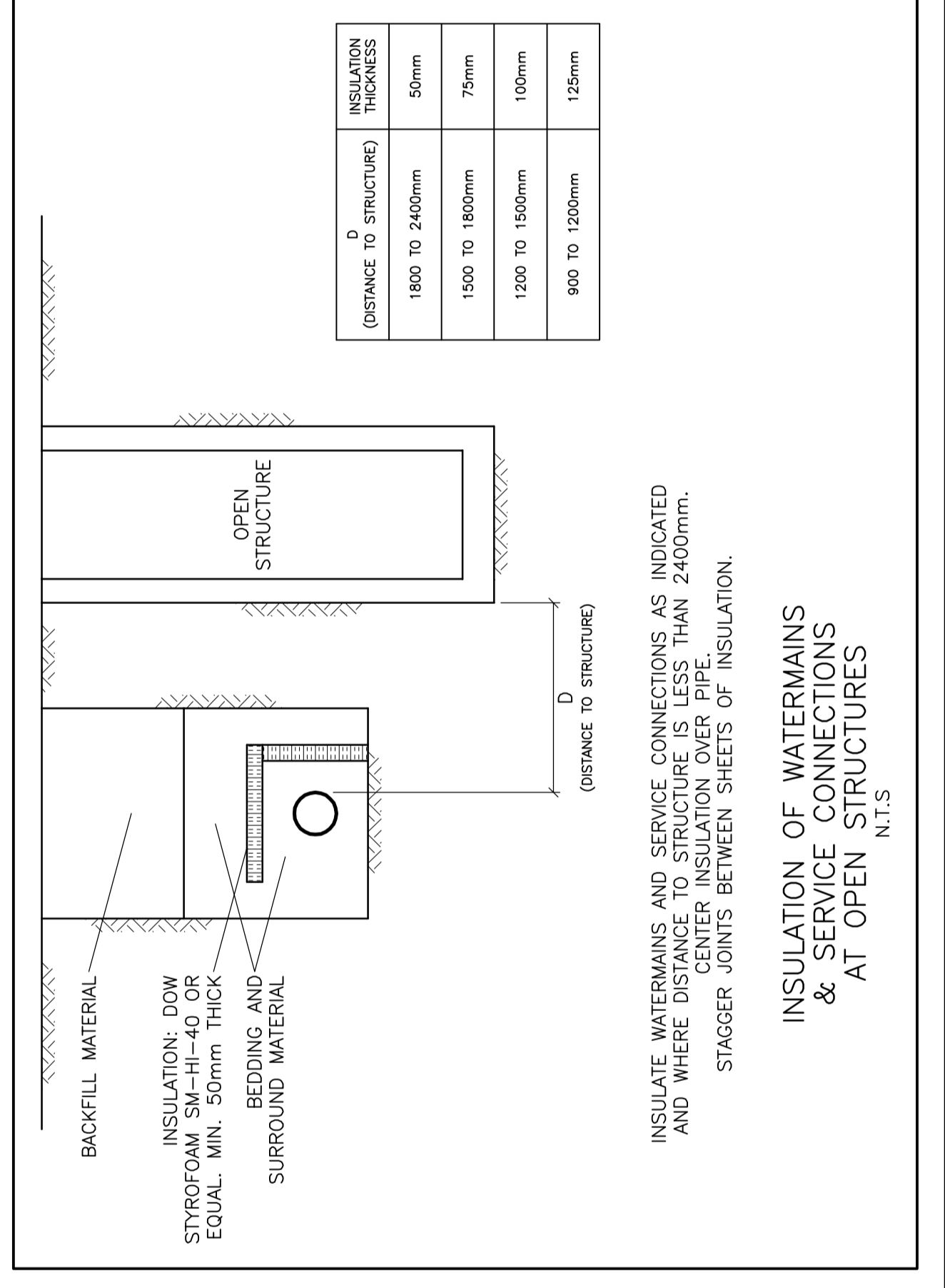
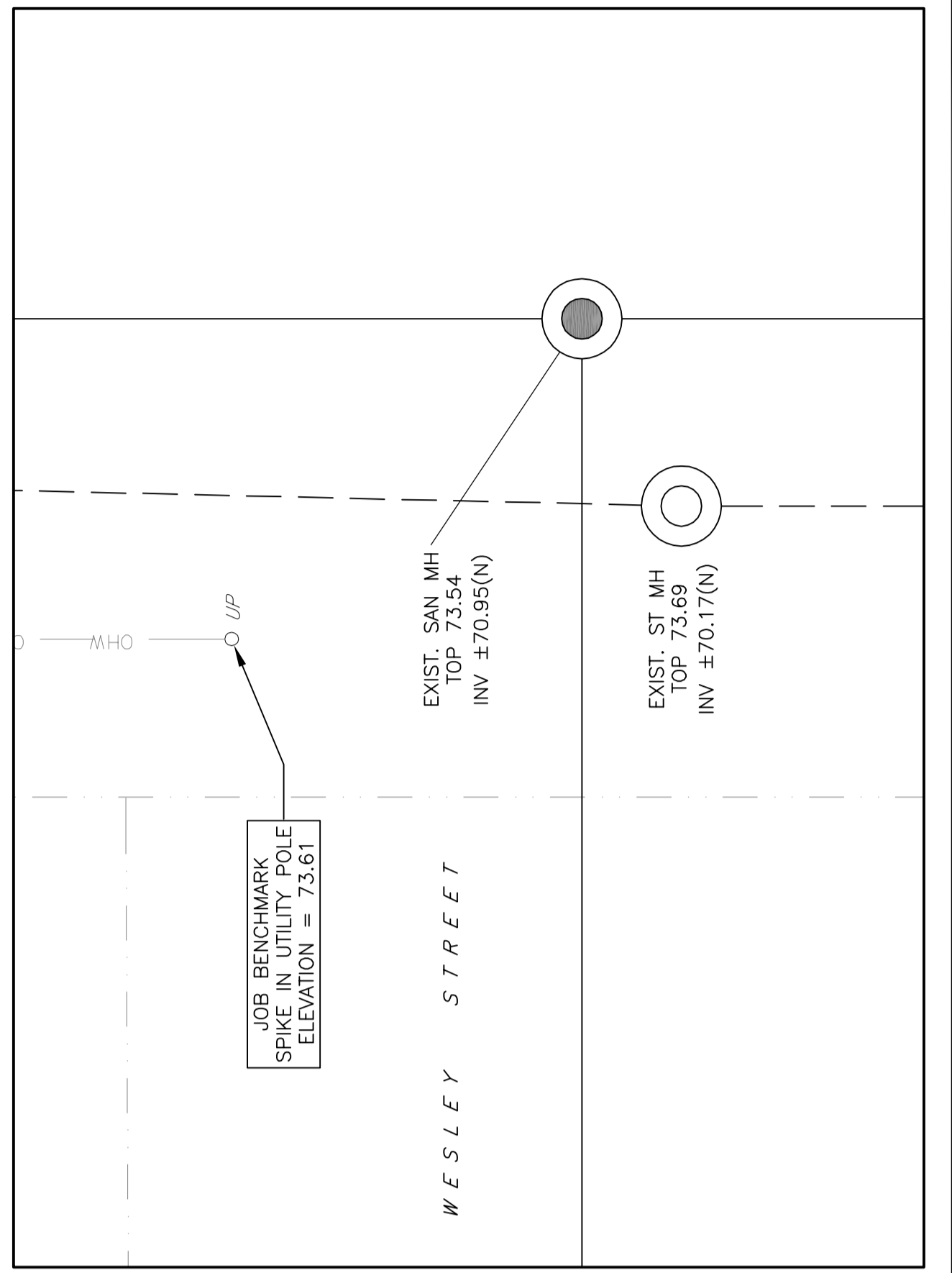
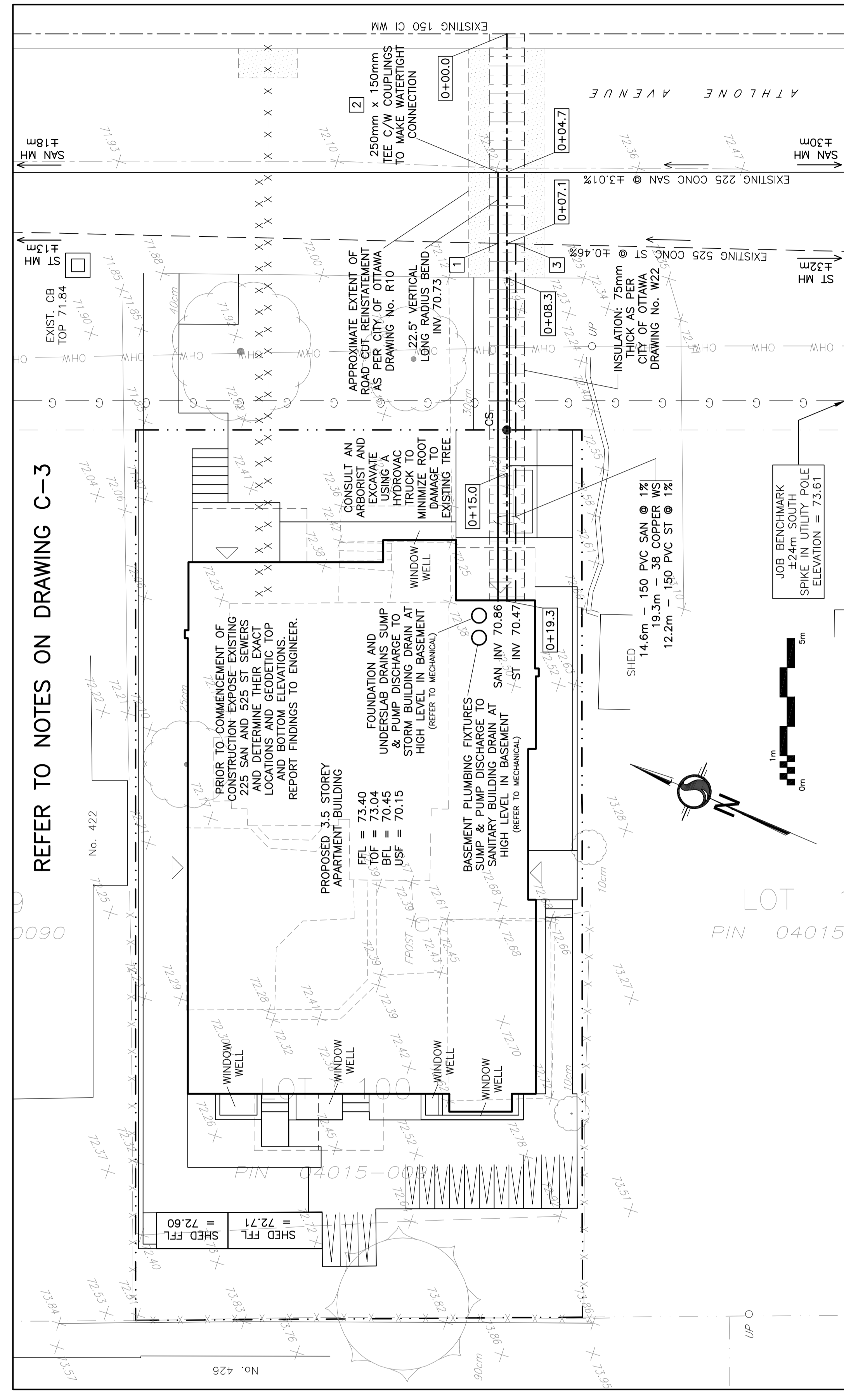
Engineer's Seal: D.B. GRAY, P. ENG., 17016502, JUL 3-23, PROVINCE OF ONTARIO

Drawn: D.B.G. H. Scale: 1:100 V. Scale: 1:100 Date: MAY 5-22 Job No.: 22027

Drawing No. **C-1** of **3**
 NOT VALID UNLESS SIGNED & DATED



REF	DETAILS	CLEARANCE	REF	DETAILS	CLEARANCE
1	150 SAN INV 70.74 525 ST TOP ±70.59	±150mm	2	150 SAN INV 69.80 225 SAN SPL ±69.80	-
3	150 ST OBV 70.50 525 ST OBV ±70.50	-			



A. McCreight

ANDREW MCCREIGHT
 MANAGER, DEVELOPMENT REVIEW CENTRAL
 PLANNING, DEVELOPMENT & BUILDING SERVICES
 DEVELOPMENT DEPARTMENT, CITY OF OTTAWA

APPROVED
 By Andrew McCreight at 2:38 pm, Jul 05, 2024

WATER SERVICE PROFILE TABLE

MATERIAL: 38mm COPPER ASTM B88 TYPE "K" SOFT

STATION	DESCRIPTION	GRADE ELEVATION	TOP OF PIPE	DEPTH OF COVER	NOTES
0+00.0	TVS CONNECTION TO 150mm MUNICIPAL WATERMAIN TO CITY OF OTTAWA STANDARDS	±72.17	±70.37	±1.80	START OF INSULATION IN SHALLOW TRENCH: 75mm THICK
0+04.7	-	±72.22	70.12	±2.10	38 WS U/S 70.08 225 SAN TOP 69.93
0+07.1	-	±72.19	69.73	±2.46	525 ST U/S 69.88 38 WS TOP 69.73
0+08.3	-	±72.17	69.77	2.40	EDGE OF ROAD
0+13.5	38mm CURB STOP & SERVICE POST TO CITY OF OTTAWA STANDARDS	72.44	70.04	2.40	ON PROPERTY LINE
0+15.0	-	72.46	70.06	2.40	START OF INSULATION AT OPEN STRUCTURE: 75mm THICK
0+19.3	-	72.64	70.10	2.54	ENTRY INTO BUILDING END OF INSULATION AT OPEN STRUCTURE: 75mm THICK