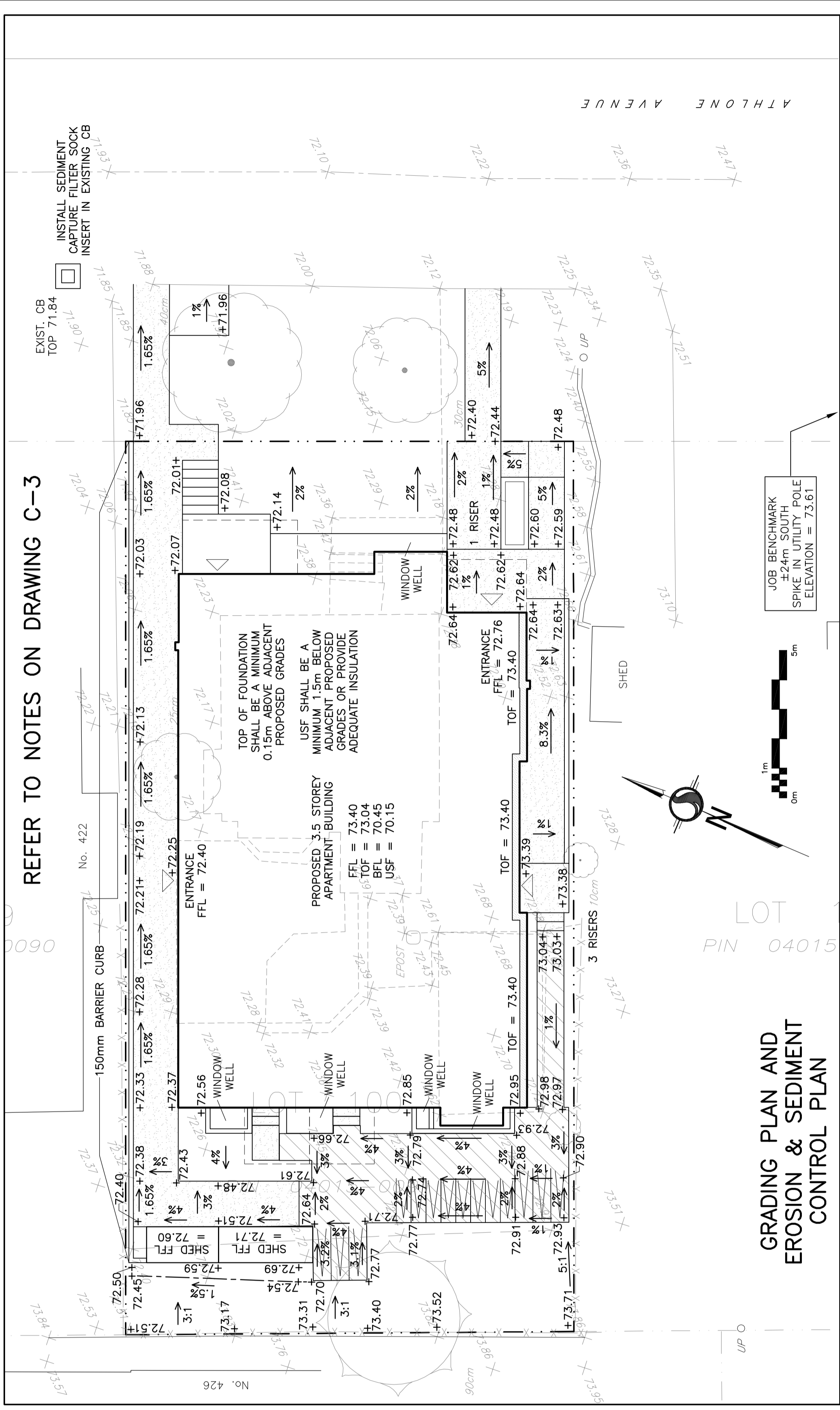


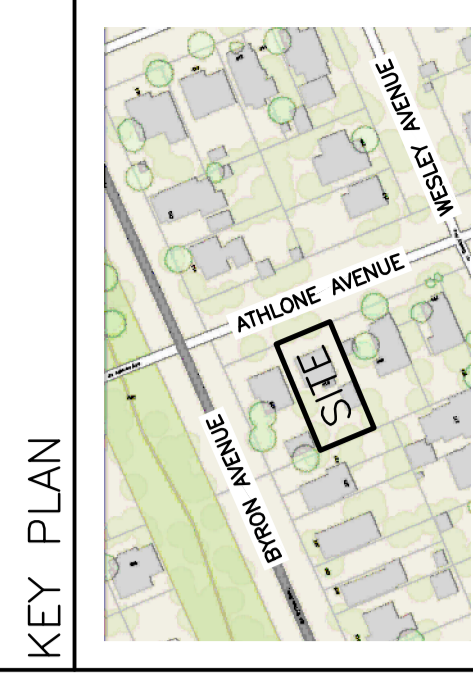
EXISTING CONDITIONS, REMOVALS & DECOMMISSIONING PLAN



GRADING PLAN AND EROSION & SEDIMENT CONTROL PLAN

LEGEND

FFL	FINISHED FLOOR ELEVATION
TOF	TOP OF FOUNDATION
BFL	BASEMENT FLOOR ELEVATION
USF	UNDERSIDE OF FOOTING
- - -	PROPERTY LINE
CB	CATCH-BASIN
99.99	EXISTING GRADE ELEVATION
+99.99	PROPOSED GRADE ELEVATION
2%	PROPOSED SLOPE OF GRADE
- - -	CENTERLINE OF SWALE
—	150mm BARRIER CURB
///	PAVEMENT
□	CONCRETE



No.	DATE	REVISION
1	MAY 5-22	ISSUED FOR COORDINATION
2	MAY 16-22	ISSUED FOR APPROVAL
3	APR 3-23	RE-ISSUED FOR APPROVAL
4	MAY 21-24	RE-ISSUED FOR APPROVAL
5	JUL 3-24	RE-ISSUED FOR APPROVAL

D. B. GRAY ENGINEERING INC.
Professional Engineers - Ontario - 10000
 700 Long Point Circle
 Ottawa, Ontario
 dlgray@dbgrayengineering.com
 613-255-8044

PROPOSED 3.5-STOREY APARTMENT BUILDING
 436 ATHLONE AVENUE
 OTTAWA, ONTARIO

EXISTING CONDITIONS, GRADING PLAN AND SEDIMENT CONTROL PLAN

Engineer's Seal

 Drawing Title
EXISTING CONDITIONS, GRADING PLAN AND SEDIMENT CONTROL PLAN
 Drawing No. **C-2** of **3**
 NOT VALID UNLESS SIGNED & DATED

A. McCreight
ANDREW MCCREIGHT
 MANAGER, DEVELOPMENT REVIEW CENTRAL
 PLANNING, DEVELOPMENT & BUILDING SERVICES
 DEVELOPMENT DEPARTMENT, CITY OF OTTAWA

APPROVED
 By Andrew McCreight at 2:38 pm, Jul 05, 2024

