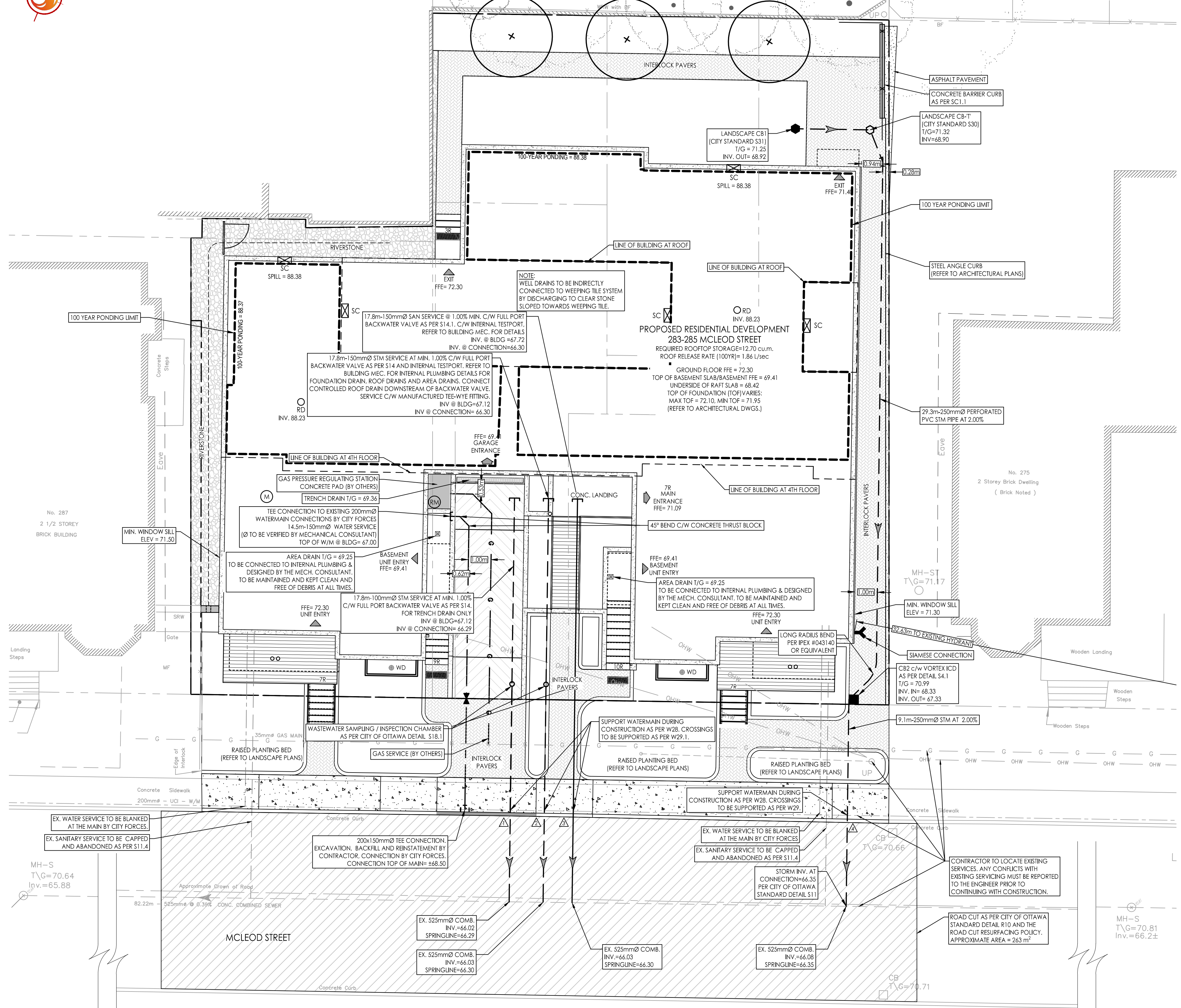




Stantec Consulting Ltd.
300 - 1331 Clyde Avenue
Ottawa ON
Tel. 613.722.4420
www.stantec.com

Copyright Reserved
The Contractor shall verify and be responsible for all dimensions. DO NOT scale the drawing - any errors or omissions shall be reported to Stantec without delay.
The Copyrights to all designs and drawings are the property of Stantec. Reproduction or use for any purpose other than that authorized by Stantec is forbidden.



GENERAL NOTES

- 1. ALL WORK SHALL BE CARRIED OUT IN COMPLIANCE WITH THE ONTARIO OCCUPATIONAL HEALTH AND SAFETY ACT AND REGULATIONS FOR CONSTRUCTION PROJECTS.
- 2. ALL WORK AND MATERIALS TO CONFORM WITH CURRENT MINISTRY OF THE ENVIRONMENT & ENERGY OF ONTARIO, CITY OF OTTAWA AND ONTARIO PROVINCIAL STANDARDS AND SPECIFICATIONS. LOCAL UTILITY STANDARDS AND MINISTRY OF TRANSPORTATION STANDARDS WILL APPLY WHERE REQUIRED.
- 3. THE CONTRACTOR IS ADVISED THAT WORKS BY OTHERS MAY BE ONGOING DURING THE PERIOD OF THIS CONTRACT. THE CONTRACTOR SHALL COORDINATE CONSTRUCTION ACTIVITIES AND COORDINATION WITH ALL OTHER CONTRACTORS AND PREVENT CONSTRUCTION CONFLICTS.
- 4. THE INFORMATION SHOWN FOR EXISTING UTILITIES WAS PROVIDED BY OTHERS. THE CONTRACTOR IS RESPONSIBLE FOR LOCATING AND VERIFYING ALL UTILITIES DURING CONSTRUCTION. ALL EXISTING UTILITIES MUST BE LOCATED AND VERIFIED BY EACH UTILITY PRIOR TO COMMENCEMENT OF WORK. ANY VARIANCE IS TO BE IMMEDIATELY REPORTED TO THE ENGINEER. LOST TIME DUE TO FAILURE OF THE CONTRACTOR TO CONFIRM UTILITY LOCATIONS AND NOTIFY THE ENGINEER OF POSSIBLE CONFLICTS PRIOR TO CONSTRUCTION WILL BE AT THE CONTRACTORS EXPENSE.
- 5. ALL CONSTRUCTION SHALL BE CARRIED OUT IN ACCORDANCE WITH THE RECOMMENDATIONS MADE IN THE GEOTECHNICAL REPORT.
- 6. THE CONTRACTOR IS RESPONSIBLE FOR OBTAINING ALL PERMITS REQUIRED AND TO BEAR THE COST OF SAME INCLUDING WATER PERMIT AND ASSOCIATED COSTS.
- 7. ALL DISTURBED AREAS SHALL BE REINSTATED TO EQUAL OR BETTER CONDITION TO THE SATISFACTION OF THE ENGINEER AND THE CITY OF OTTAWA. PAVEMENT REINSTATEMENT FOR SERVICE AND UTILITY CUTS SHALL BE IN ACCORDANCE WITH CITY OF OTTAWA STANDARD R10, OPSD 509.010 AND OPS 510.
- 8. CONTRACTOR TO OBTAIN A ROAD OCCUPANCY PERMIT 48 HOURS PRIOR TO COMMENCING ANY WORK WITHIN THE MUNICIPAL ROAD ALLOWANCE IF REQUIRED BY THE MUNICIPALITY.
- 9. BENCHMARKS: IT IS THE RESPONSIBILITY OF THE CONTRACTOR TO VERIFY THAT THE SITE BENCHMARK(S) HAS NOT BEEN ALTERED OR DISTURBED AND THAT ITS RELATIVE ELEVATION AND DESCRIPTION AGREES WITH THE INFORMATION SHOWN ON DRAWING GP-1.
- 10. THE CONTRACTOR SHALL PROVIDE TO THE ENGINEER 1 (ONE) SET OF AS CONSTRUCTED SITE SERVICING, GRADING, AND SITE ELECTRICAL DWGS.
- 11. CONTRACTOR TO LOCATE EXISTING SERVICE LATERALS PRIOR TO CONSTRUCTION. EXISTING STORM AND SANITARY SERVICE LATERALS TO BE ABANDONED PER S11.4. EXISTING WATER SERVICE TO BE BLANKET AS PER S11.4.
- 12. TOPOGRAPHIC SURVEY SUPPLIED BY ANNIS O'SULLIVAN, VOLLEBEKK LTD. DATED MAY 10, 2018. ADDITIONAL ELEVATION POINTS SUPPLIED BY ANNIS O'SULLIVAN, VOLLEBEKK LTD. ON JANUARY 15, 2024.
- 13. ALL ELEVATIONS SHOWN ARE IN METRES.
- 14. GEOTECHNICAL INVESTIGATION REPORT PGS489-1 REVISION 2 PREPARED BY PATTERSON GROUP INC. DATED DECEMBER 11, 2023. GEOTECHNICAL INFORMATION PRESENTED ON THESE DRAWINGS MAY BE INTERPOLATED FROM THE ORIGINAL REPORT. REFER TO ORIGINAL GEOTECHNICAL REPORT FOR ADDITIONAL DETAILS AND TO VERIFY ASSUMPTIONS MADE HERE.
- 15. ALL DIMENSIONS ARE IN METRES UNLESS OTHERWISE STATED. DIMENSIONS SHALL BE CHECKED AND VERIFIED IN THE FIELD BY THE CONTRACTOR PRIOR TO THE START OF CONSTRUCTION. ANY DISCREPANCIES TO BE REPORTED IMMEDIATELY TO ENGINEER.

WATER SUPPLY SERVICING

- 1. THE CONTRACTOR SHALL CONSTRUCT WATER SERVICE CONNECTIONS & APPURTENANCES AS PER CITY OF OTTAWA SPECIFICATIONS & SHALL COORDINATE AND PAY ALL RELATED COSTS INCLUDING THE COST OF CONNECTION, INSPECTION & DEMONSTRATION BY CITY PERSONNEL.
- 2. WATER SERVICE TO BE INSTALLED 1.0m OFF BUILDING FACE.
- 3. WATER SERVICE TO BE PVC DR 18 AS PER CITY OF OTTAWA STANDARD. STAND POST TO BE INSTALLED AT PROPERTY LINE.
- 4. WATER SERVICE TRENCH AND BEDDING SHALL BE IN ACCORDANCE WITH CITY OF OTTAWA STD. W17 UNLESS OTHERWISE SPECIFIED. BEDDING AND COVER MATERIAL TO BE SPECIFIED BY PROJECT GEOTECHNICAL CONSULTANT.
- 5. SERVICE CONNECTIONS SHALL BE INSTALLED A MINIMUM OF 2400mm FROM ANY CATCHBASIN, MANHOLE OR OBJECT THAT MAY CONTRIBUTE TO FREEZING. THERMAL INSULATION SHALL BE INSTALLED ON ALL PROPOSED SERVICES ON THE W/M STREET SIDE WHERE 2400mm SEPARATION CANNOT BE ACHIEVED (AS PER CITY OF OTTAWA STD. W23).
- 6. CATHODIC PROTECTION TO BE SUPPLIED ON METALIC FITTINGS AS PER CITY OF OTTAWA STD. W39 AND W41.
- 7. ALL WATER SERVICE BENDS, JOINTS, TEES AND PLUGS SHALL BE MECHANICALLY RESTRAINED IN ACCORDANCE WITH CITY OF OTTAWA STANDARDS.
- 8. ALL WATER SERVICES SHALL HAVE MIN. COVER OF 2.4m. WATER SERVICES ARE TO BE INSTALLED TO THE ELEVATIONS SHOWN ON THE APPROVED SITE SERVICING DRAWING. WHERE SPECIFIC WATER SERVICE ELEVATIONS ARE NOT SHOWN ON SERVICING DRAWING, A MINIMUM COVER OF 2.4m FROM PROPOSED GRADES, AS SHOWN ON THE GRADING PLAN, MUST BE MAINTAINED AT ALL TIMES. IN PREGRADE AREAS COVER TO BE FROM PREGRADE ELEVATIONS. WHERE WATER SERVICE COVER IS LESS THAN 2.4m, INSULATION TO BE SUPPLIED IN ACCORDANCE WITH CITY OF OTTAWA STD. W22.
- 9. WATER SERVICES MUST COMPLY WITH MINIMUM HORIZONTAL AND VERTICAL CLEARANCES IN ACCORDANCE WITH LOCAL PROVINCIAL GUIDELINES AND THE APPLICABLE BUILDING AND PLUMBING CODE. WHERE HORIZONTAL SEPARATIONS CANNOT BE ACHIEVED, APPROVAL FROM THE ENGINEER MUST BE OBTAINED AND A MINIMUM 500mm VERTICAL SEPARATION MUST BE MAINTAINED.
- 10. ALL WATER SERVICES SHALL BE HYDROSTATICALLY TESTED IN ACCORDANCE WITH THE CITY OF OTTAWA AND ONTARIO GUIDELINES UNLESS OTHERWISE DIRECTED. PROVISIONS FOR FLUSHING WATER LINE PRIOR TO TESTING, ETC. MUST BE PROVIDED.
- 11. ALL WATER SERVICES SHALL BE BACTERIOLOGICALLY TESTED IN ACCORDANCE WITH THE CITY OF OTTAWA AND ONTARIO GUIDELINES. ALL CHLORINATED WATER TO BE DISCHARGED AND PRETREATED TO ACCEPTABLE LEVELS PRIOR TO DISCHARGE. ALL DISCHARGED WATER MUST BE CONTROLLED AND TREATED SO AS NOT TO ADVERSELY EFFECT THE ENVIRONMENT. IT IS THE RESPONSIBILITY OF THE CONTRACTOR TO ENSURE THAT ALL MUNICIPAL AND/OR PROVINCIAL REQUIREMENTS ARE FOLLOWED.

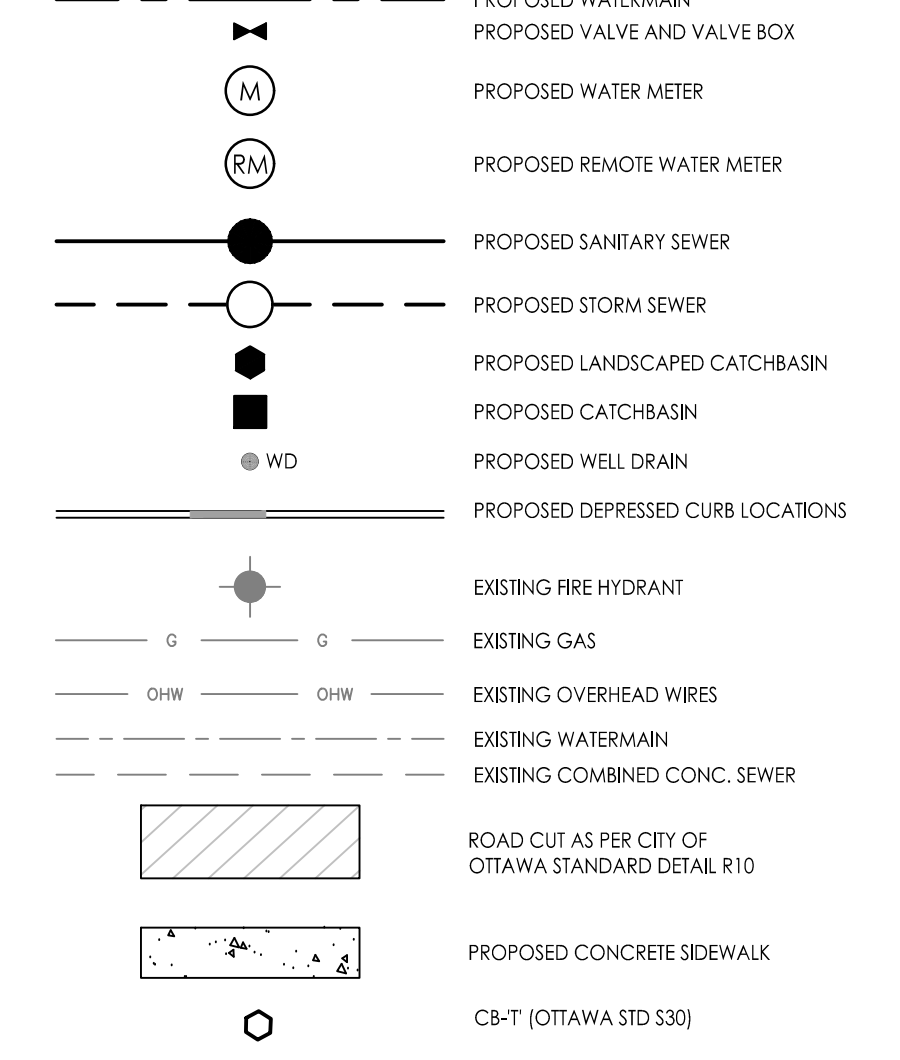
STORM AND SANITARY SEWERS

- 1. SEWER TRENCH SHALL CONSIST OF CLASS 'B' BEDDING PER CITY OF OTTAWA STANDARDS S6 AND S7. COMPACTION SHALL BE AS PER GEOTECHNICAL CONSULTANT RECOMMENDATIONS.
- 2. FOR CONSTRUCTION DETAILS NOT SHOWN ON PLANS, REFERENCE SHALL BE MADE TO THE ONTARIO PROVINCIAL STANDARDS DRAWINGS AND CITY OF OTTAWA STANDARDS.
- 3. STORM AND SANITARY SERVICE LATERALS TO PVC SDR 28.
- 4. SERVICES TO BUILDINGS TO BE TERMINATED 1.0m FROM THE FACE OF BUILDING UNLESS OTHERWISE NOTED.
- 5. THE CONTRACTOR IS TO PROVIDE CCTV CAMERA INSPECTIONS OF ALL SANITARY AND STORM SEWERS, INCLUDING PICTORIAL REPORT, ONE (1) CD COPY AND TWO (2) VIDEO TAPES IN A FORMAT SATISFACTORY TO THE ENGINEER. ALL SEWERS ARE TO BE FLUSHED PRIOR TO CAMERA INSPECTION. ASPHALT WEAR COURSE SHALL NOT BE PLACED UNTIL THE VIDEO INSPECTION OF SEWERS & NECESSARY REPAIRS HAVE BEEN CARRIED OUT TO THE SATISFACTION OF THE CONSULTANT.
- 6. LASER ALIGNMENT CONTROL TO BE UTILIZED ON ALL SEWER INSTALLATIONS.
- 7. FROST PROTECTION PER CITY OF OTTAWA STANDARD DRAWING S35 WHERE THERE IS LESS THAN 2.0m OF COVER ABOVE THE SEWER SERVICES.
- 8. CONTRACTOR SHALL PERFORM LEAKAGE TESTING, IN THE PRESENCE OF THE CONSULTANT, FOR SANITARY SEWERS IN ACCORDANCE WITH OPS 410 AND OPS 407. A COPY OF THE INSPECTION REPORT SHALL BE SUBMITTED TO THE CONSULTANT FOR REVIEW.
- 9. STORM AND SANITARY SERVICE CONNECTION AS PER CITY STD DWG S11.
- 10. CONTRACTOR TO VERIFY EXISTING SEWERS AND INVERTS. AND REPORT ANY DISCREPANCIES TO SITE ENGINEER BEFORE PROCEEDING WITH CONSTRUCTION.
- 11. CATCHBASIN PER CITY STANDARDS c/w FRAME AND GRATE AS PER S20, AND S21. PROVIDE 150mm ADJUSTED SPACERS. CATCHBASIN SHALL HAVE 600mm DEEP SUMP AND INSTALLED WITH INLET CONTROL DEVICE.
- 12. LANDSCAPE CATCHBASIN PER CITY STANDARD S31.

ONSITE SNOW MANAGEMENT

- 1. RAMP TO PARKING GARAGE IS TO BE HEAT TRACED.
- 2. ALL PAVED WALKWAYS ARE TO BE HEAT TRACED.
- 3. NO ONSITE SNOW STORAGE AREAS ARE REQUIRED.

Legend



Revision table with columns for revision number, description, and date.

Revision	By	Appd.	YY.MM.DD	
4	ISSUED FOR FORMAL SPC SUBMISSION	J.P.	KS	24.06.18
3	REVISED PER CITY COMMENTS	J.P.	KS	24.05.17
2	REVISED PER CITY COMMENTS	A.J.T.	KS	24.04.05
1	ISSUED FOR REVIEW	A.J.T.	KS	24.01.22

Revision table with columns for revision number, description, and date.

Revision	By	Appd.	YY.MM.DD	
1	ISSUED FOR REVIEW	A.J.T.	KS	24.01.22

File Name: 160401782-08.dwg

Table with columns for role and name: File Name, Dwn., Chkd., Dgn., Appd.

File Name	Dwn.	Chkd.	Dgn.	Appd.
160401782-08.dwg	A.J.T.	ALG	A.J.T.	24.01.22

Permit-Seal

Client/Project
REZY PROPERTIES INC.

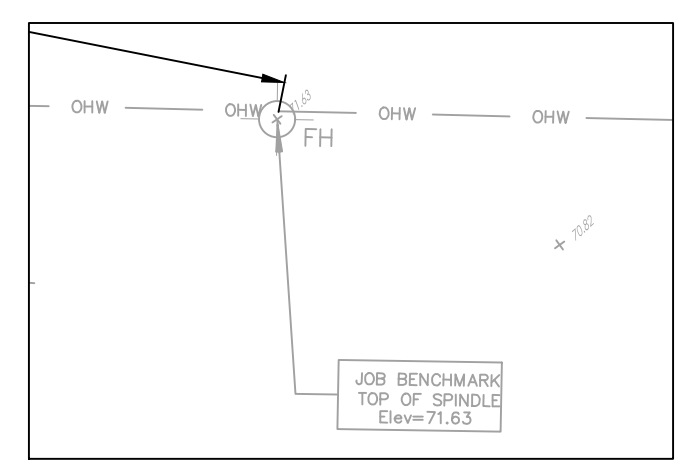
CENTRETOWN
283-285 MCLEOD STREET
OTTAWA, ON, CANADA

Title
SITE SERVICING PLAN

Project No. 160401782
Drawing No. 160401782
Scale 1:100
Sheet 4 of 7
Revision 3

SEWER AND WATERMAIN CROSSING TABLE

CROSSING	STM INV	STM OSV	SAN INV	SAN OSV	WTR TOP	WTR BTM
▲	66.98	67.08			68.30	68.30
▲	66.98	67.13			68.53	68.53
▲			67.58	67.73	68.53	68.53
▲	67.22	67.47			68.35	68.15



Vertical text on the left edge of the page: X:\Projects\160401782\Design\Drawings\160401782-08.dwg