

NORTH ELEVATION - BUILDING "A"  
1:100



SOUTH ELEVATION - BUILDING "A"  
1:100

ELEVATION KEYNOTE LEGEND	
1	ARCHITECTURAL MASONRY B/C: ARBESCREFF: "WALNUT OR MENDOTA GREY"
2	ARCHITECTURAL MASONRY B/C: ARBESCREFF: "SPIN"
3	STEEL BRUSH METAL: NORWOOD MIN: "BLACK WALNUT"
4	ACRYLIC: LIGHT GREY COLOR
5	ACRYLIC: CHARCOAL COLOR
6	EXPOSED CONCRETE
7	METAL CLADDING PANEL: LIGHT GREY COLOR
8	WINDOW WALL DOUBLE GLASS WITH ALUMINUM PROFILE: BLACK COLOR
9	GLAZING WITH TINTED GLASS WITH ALUMINUM PROFILE: BLACK COLOR
10	WINDOW SCREEN WITH FRIGTED GLASS WITH ALUMINUM PROFILE: BLACK COLOR: 800MM OF HEIGHT
11	GLASSING: COLOR MATCHED TO ADJACENT MATERIAL
12	METAL FLASHING: COLOR MATCHED TO ADJACENT MATERIAL
13	ADJACENT MATERIAL: COLOR MATCHED TO ADJACENT MATERIAL
14	METAL PANEL: FOR ENTRANCE CANOPY: BLACK COLOR
15	GALVANIZED STEEL: OUTRIG
16	GALVANIZED STEEL: CLADDING WITH FINGERETS
17	PRE-FINISHED METAL: SCOPER
18	VENT COVER: SEE MECHANICAL DRAWINGS
19	WINDOW SCREEN WITH PERFORATED ALUMINUM: BLACK COLOR

ELEVATION LEGEND	
○	EXTERIOR FINISH REFER TO ELEVATION KEYNOTE LEGEND
■	WINDOW TYPE REFER TO WINDOW SCHEDULE
▨	ANODIZED ALUMINUM WALL BOX VENTILATION COVER COORDINATE WITH MECHANICAL ENGINEER DRAWINGS FOR LOCATIONS.
▧	GALVANIZED STEEL STRUCTURAL STEEL ANGLES, STEEL SHIP LOCATIONS TO BE COORDINATED WITH THE ARCHITECTURAL DETAILS / SECTIONS, MASONRY COURSING, STEEL SHIP DRAWINGS AND STRUCTURAL ENGINEER DRAWINGS.
▩	DROPPED GALVANIZED STEEL STRUCTURAL STEEL ANGLE LEVELS AND LOCATIONS TO BE COORDINATED WITH THE ARCHITECTURAL DETAILS / SECTIONS, FLOOR SLAB PLANS, MASONRY COURSING, STEEL SHIP DRAWINGS AND STRUCTURAL ENGINEER DRAWINGS.
▬	MASONRY EXPANSION JOINT REFER TO JAW DETAILS

NOTES:  
1. EXHAUST VENT LOCATION TO BE VERIFIED AND COORDINATED WITH MECHANICAL ENGINEER DRAWINGS.

**NOTES GÉNÉRALES / General Notes**

1. Ces documents d'architecture sont la propriété exclusive de NEUF architectes et ne peuvent être réutilisés, reproduits ou copiés sans autorisation écrite préalable. / These architectural documents are the exclusive property of NEUF architectes and cannot be used, copied or reproduced without written pre-authorization.

2. Les dimensions apparaissant aux documents doivent être vérifiées par l'entrepreneur avant le début des travaux. / All dimensions which appear on the documents must be verified by the contractor before to start the work.

3. Veuillez utiliser l'architecture de toute dimension enroulée ou dépliée enroulée sur ces documents et non des autres professionnels. / The architect must be notified of all errors, omissions and discrepancies between these documents and those of the others professionals.

4. Les dimensions sur ces documents doivent être lues et non mesurées. / The dimensions on these documents must be read and not measured.

**PLANIFICATEUR / Planner**  
FOTENI Planning and Urban Design  
390 Cooper Street, Suite 300, Ottawa, ON K2P 2H7  
T 613 730 5709 foteini.com

**ARCHITECTURE DE PAYSAGE, Landscape Architect**  
GJA Inc. Gino, J. Aiello  
110 Dabury Road, Unit 9, Ottawa, ON K2T 0C2  
T 613 293 6150 gja.com

**INGÉNIEUR TRANSPORT Transportation Engineering**  
PARSONS  
1225 Somerset Street, Suite 100, Ottawa, ON K1J 1T2  
T 613 836 4160 parsons.com

**CIVIL, Civil**  
McINTOSH PERRY  
115 Wellington Road RRS 3 City, Ottawa, ON K0A 1L0  
T 613 836 2184 mcintoshperry.com

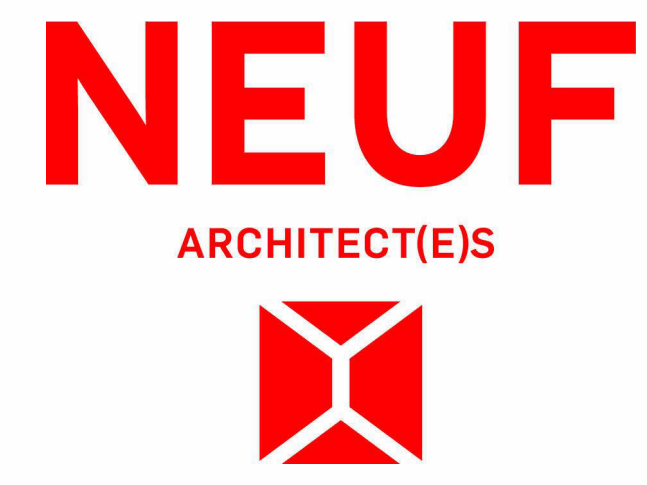
**STRUCTURE / Structure**  
RJC Engineers  
1545 Carling Avenue, Suite 304, Ottawa, ON K1Z 8P9  
T 613 714 7200 rjc.ca

**ARCHITECTES / Architect**  
NEUF architect(e)s  
630 boul. René-Lévesque O. 32e étage, Montréal, QC H3B 1S6  
T 514 947 1117 neuf.ca

**INGÉNIEUR MÉCANIQUE / Mechanical Engineer**  
BUILDING CONSULTANTS  
6465 rue Donat-Lesieur, Suite 110, Boisbriand, QC J7H 0E8  
T 514 718 6841 building-consultants.ca

**INGÉNIEUR ÉLECTRIQUE / Electrical Engineer**  
BUILDING CONSULTANTS  
6465 rue Donat-Lesieur, Suite 110, Boisbriand, QC J7H 0E8  
T 514 718 6841 building-consultants.ca

**SCÉAU / Seal**



**CLIENT / Client**  
SINA

**OUVRAGE / Project**  
788 MARCH ROAD RESIDENTIAL

**EMPLACEMENT / Location**  
OTTAWA, ON

**NO. PROJET / No.**  
13109

NO.	REVISION	DATE (aa-mm-jj)
B	FOR FOUNDATION PERMIT	2024-04-26

**DESIGNÉ PAR / Drawn by**  
N.S.H/B.R.

**VÉRIFIÉ PAR / Checked by**  
B.R.

**DATE (aa-mm-jj)**  
2024-06-04

**ÉCHELLE / Scale**  
1 : 100

**TITRE DU DESSIN / Drawing Title**  
ELEVATIONS - BUILDING "A"

REVISION	Revision	NO. DESSIN / Day Number
B		A400

**Preliminary DO NOT USE FOR CONSTRUCTION**

ELEVATION KEYNOTE LEGEND	
NOTE	DESCRIPTION
1	ARCHITECTURAL MASONRY B/C: ARBESCRETT, "WALNUT OR MENDOTA GREY"
2	ARCHITECTURAL MASONRY B/C: ARBESCRETT, "SPIN"
3	STEEL BRUSH IAC METAL, NORWOOD MIN. "BLACK WALNUT"
4	ACRYLIC, LIGHT GREY COLOR
5	ACRYLIC, CHARCOAL COLOR
6	EXPOSED CONCRETE
7	METAL CLADDING PANEL, LIGHT GREY COLOR
8	WINDOW WALL DOUBLE GLASS WITH ALUMINUM PROFILE, BLACK COLOR
9	QUARDIAN, WITH TAMPED GLASS WITH ALUMINUM PROFILE, BLACK COLOR
10	PRIVACY SCREEN WITH FRIGTES GLASS WITH ALUMINUM PROFILE, BLACK COLOR, 1800MM OF HEIGHT
11	CLADDING, COLOR MATCHED TO ADJACENT MATERIAL
12	METAL FLASHING, COLOR MATCHED TO ADJACENT MATERIAL
13	INTERIOR SPOT
14	METAL PANEL FOR ENTRANCE CANOPY, BLACK COLOR
15	GALVANIZED STEEL OUTLET
16	GALVANIZED STEEL, CHARCOAL WITH POCKETS
17	PRE-FINISHED METAL SCOPPER
18	VENT CAPS, SEE MECHANICAL DRAWINGS
19	PRIVACY SCREEN WITH PERFORATED ALUMINUM, BLACK COLOR

ELEVATION LEGEND	
	EXTERIOR FINISH REFER TO ELEVATION KEYNOTE LEGEND
	WINDOW TYPE REFER TO WINDOW SCHEDULE
	ANODIZED ALUMINUM WALL BOX VENTILATION COORDINATE WITH MECHANICAL ENGINEER DRAWINGS FOR LOCATIONS.
	GALVANIZED STEEL STRUCTURAL STEEL ANGLE, LEVEL AND LOCATIONS TO BE COORDINATED WITH THE ARCHITECTURAL DETAILS / SECTIONS, MASONRY COURSING, STEEL SHOP DRAWINGS AND STRUCTURAL ENGINEER DRAWINGS.
	DROPPED GALVANIZED STEEL STRUCTURAL STEEL ANGLE, LEVEL AND LOCATIONS TO BE COORDINATED WITH THE ARCHITECTURAL DETAILS / SECTIONS, FLOOR SLAB PLANS, MASONRY COURSING, STEEL SHOP DRAWINGS AND STRUCTURAL ENGINEER DRAWINGS.
	MASONRY EXPANSION JOINT REFER TO VAN DETAILS
<b>NOTES:</b> 1 EXHAUST VENT LOCATION TO BE VERIFIED AND COORDINATED WITH MECHANICAL ENGINEER DRAWINGS.	



NORTH-WEST CORNER ELEVATION - BUILDING "A"  
1:100



SOUTH-EAST CORNER ELEVATION - BUILDING "A"  
1:100



WEST ELEVATION - BUILDING "A"  
1:100



EAST ELEVATION - BUILDING "A"  
1:100

NOTES GÉNÉRALES / General Notes

- Ces documents d'architecture sont la propriété exclusive de NEUF architectes et ne peuvent être utilisés, reproduits ou copiés sans autorisation écrite préalable. / These architectural documents are the exclusive property of NEUF architectes and cannot be used, copied or reproduced without written pre-authorization.
- Les dimensions apparaissant aux documents doivent être vérifiées par l'entrepreneur avant le début des travaux. / All dimensions which appear on the documents must be verified by the contractor before to start the work.
- Veuillez utiliser l'architecture de tous dimension enrou et/ou dimensions entre ces documents et ceux des autres professionnels. / The architect must be notified of all errors, omissions and discrepancies between these documents and those of the others professionals.
- Les dimensions sur ces documents doivent être lues et non mesurées. / The dimensions on these documents must be read and not measured.

PLANNIFICATEUR / Planner  
**FOTENN Planning and Urban Design**  
 390 Cooper Street, Suite 300, Ottawa, ON K2P 2H7  
 T 613 730 5709 fotenn.com

ARCHITECTURE DE PAYSAGE, Landscape Architect  
**GJA Inc. Gino, J. Aiello**  
 110 Dalrymple Road, Unit 9, Ottawa, ON K2T 0C2  
 T 613 298 8100 gja.com

INGÉNIEURIE TRANSPORT / Transportation Engineering  
**PARSONS**  
 1223 Somerset Street, Suite 100, Ottawa, ON K1J 1T2  
 T 613 738 4160 parsons.com

CIVIL / Civil  
**McINTOSH PERRY**  
 115 Wellington Road RR 3 City, Ottawa, ON K0A 1L0  
 T 613 836 2184 mcintoshperry.com

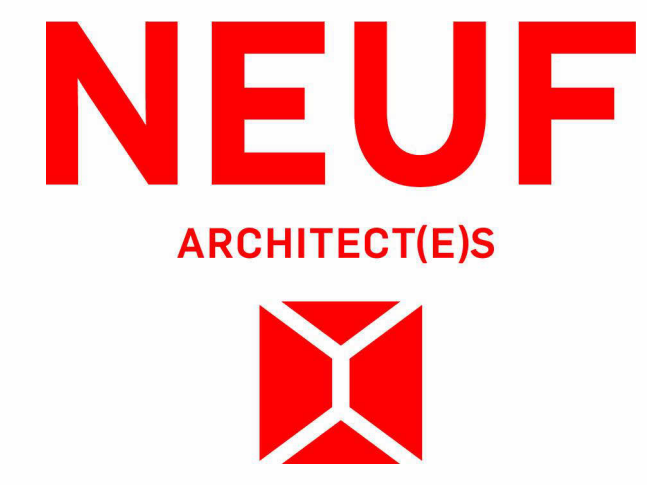
STRUCTURE / Structure  
**RJC Engineers**  
 1545 Carling Avenue, Suite 304, Ottawa, ON K1Z 8P9  
 T 613 714 7000 rjc.ca

ARCHITECTES / Architect  
**NEUF architect(e)s**  
 630 boul. René-Lévesque O. 32e étage, Montréal, QC H3B 1S6  
 T 514 947 1117 neuf.ca

INGÉNIEUR MÉCANIQUE / Mechanical Engineer  
**BUILDING CONSULTANTS**  
 6455 rue Dorval-Lesieur, Suite 110, Boisbriand, QC J7H 0E8  
 T 514 718 6841 building-consultants.ca

INGÉNIEUR ÉLECTRIQUE / Electrical Engineer  
**BUILDING CONSULTANTS**  
 6455 rue Dorval-Lesieur, Suite 110, Boisbriand, QC J7H 0E8  
 T 514 718 6841 building-consultants.ca

SCÉAU / Seal



CLIENT / Client  
**SINA**  
 3000 boul. La Capitale, Suite 1200, Laval, QC H7T 2P5  
 T 514 962 7422 sina.ca

OUVRAGE / Project  
**788 MARCH ROAD RESIDENTIAL**

EMPLACEMENT / Location  
**OTTAWA, ON**

NO PROJET No.  
**13109**

NO REVISION / DATE (aa-mm-jj)  
 B FOR FOUNDATION PERMIT 2024-06-06

DESIGNÉ PAR / Drawn by  
**N.S.H/B.R.**

VÉRIFIÉ PAR / Checked by  
**B.R.**

DATE (aa-mm-jj) / DATE (aa-mm-jj)  
**2024-06-04**

ECHELLE / Scale  
**1 : 100**

TITRE DU DESSIN / Drawing Title  
**ELEVATIONS - BUILDING "A"**

REVISION / Revision  
**B**

NO. DESSIN / Drawing Number  
**A401**



NORTH ELEVATION - BUILDING "B" 1:100



A402 SOUTH ELEVATION - BUILDING "B" 1:100

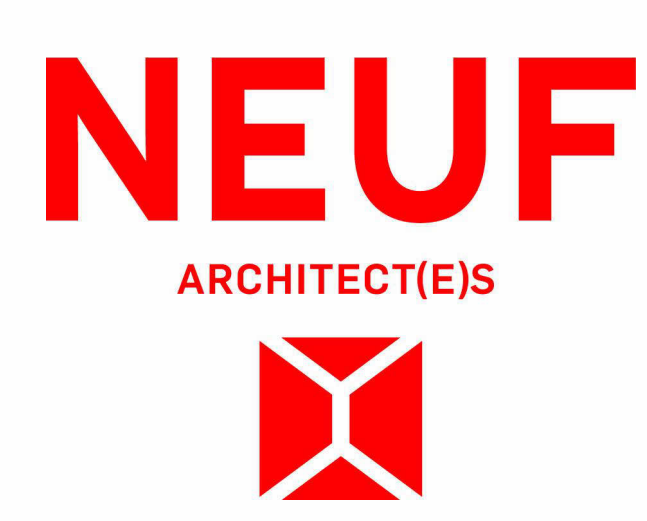
ELEVATION KEYNOTE LEGEND	
NOTE	DESCRIPTION
1	ARCHITECTURAL MASONRY B.C. BRICK/CRAFT "SPAL"
2	ARCHITECTURAL MASONRY B.C. BRICK/CRAFT "SPAL"
3	STEEL BRING IAC METAL NORWOOD MIN "BLACK WILNUT"
4	ACRYLIC LIGHT GREY COLOR
5	ACRYLIC CHARGAL COLOR
6	EXPOSED CONCRETE
7	METAL CLADDING PANEL LIGHT GREY COLOR
8	WINDOW WALL DOUBLE GLASS WITH ALUMINUM PROFILE - BLACK COLOR
9	GUARDRAIL WITH TAMPED GLASS WITH ALUMINUM PROFILE - BLACK COLOR
10	FRONTY SCREEN WITH FRIGTED GLASS WITH ALUMINUM PROFILE - BLACK COLOR - 800MM OF HEIGHT
11	CLADDING - COLOR MATCHED TO ADJACENT MATERIAL
12	METAL FLASHING - COLOR MATCHED TO ADJACENT MATERIAL
13	ADJACENT MATERIAL
14	METAL PANEL FOR ENTRANCE CANOPY - BLACK COLOR
15	ALUMINUM PANEL FOR ENTRANCE CANOPY - BLACK COLOR
16	PRE-FINISHED METAL SCOPPER
17	VENT CLADDING SEE MECHANICAL DRAWINGS
18	FRONTY SCREEN WITH FRIGTED GLASS WITH ALUMINUM PROFILE - BLACK COLOR

ELEVATION LEGEND	
○	EXTERIOR FINISH REFER TO ELEVATION KEYNOTE LEGEND
□	INDOOR TYPE REFER TO WINDOW SCHEDULE
▨	ANODIZED ALUMINUM WALL BOX VENTILATION LOUVER. COORDINATE WITH MECHANICAL ENGINEER DRAWINGS FOR LOCATION.
104	GALVANIZED STEEL STRUCTURAL SELF ANGLE. LEVELS AND LOCATIONS TO BE COORDINATED WITH THE ARCHITECTURAL DETAILS/ SECTION, MASONRY COURSE, STEEL SHOP DRAWINGS AND STRUCTURAL ENGINEER DRAWINGS.
104	PROFESS GALVANIZED STEEL STRUCTURAL SELF ANGLE. LEVELS AND LOCATIONS TO BE COORDINATED WITH THE ARCHITECTURAL DETAILS/ SECTION, FLOOR PLATE PLANS, MASONRY COURSE, STEEL SHOP DRAWINGS AND STRUCTURAL ENGINEER DRAWINGS.
104	MASONRY EXPANSION JOINT REFER TO PLAN DETAILS

NOTES:  
1 EXHAUST VENT LOCATION TO BE VERIFIED AND  
COORDINATED WITH MECHANICAL ENGINEER DRAWINGS.

- NOTES GÉNÉRALES - General Notes**
- Ces documents d'architecture sont la propriété exclusive de NEUF architectes et ne peuvent être utilisés, reproduits ou copiés sans autorisation écrite préalable. / These architectural documents are the exclusive property of NEUF architectes and cannot be used, copied or reproduced without written pre-authorization.
  - Les dimensions apparaissant aux documents doivent être vérifiées par l'entrepreneur avant le début des travaux. / All dimensions which appear on the documents must be verified by the contractor before to start the work.
  - Veuillez aviser l'architecte de toute dimension en sus ou en moins que celle indiquée sur les documents de base des autres professionnels. / The architect must be notified of all errors, omissions and discrepancies between these documents and those of the others professionals.
  - Les dimensions sur ces documents doivent être lues et non mesurées. / The dimensions on these documents must be read and not measured.
- PLANIFICATEUR - Planner**  
**FOTENI Planning and Urban Design**  
 390 Cooper Street, Suite 300, Ottawa, ON K2P 2H7  
 T 613 730 5709 foteni.com
- ARCHITECTURE DE PAYSAGE - Landscape Architect**  
**GJA Inc. Gino J. Aiello**  
 110 Dabury Road, Unit 9, Ottawa, ON K2T 0C2  
 T 613 293 8700 gja.com
- INGÉNIEUR TRANSPORT - Transportation Engineering**  
**PARSONS**  
 1225 Somerset Street, Suite 100, Ottawa, ON K1J 1T2  
 T 613 238 8700 parsons.com
- CIVIL - Civil**  
**McINTOSH PERRY**  
 115 Wellington Road RR 3 Cdn, Ottawa, ON K0A 1L0  
 T 613 836 2184 mcintoshperry.com
- STRUCTURE - Structure**  
**RJC Engineers**  
 1545 Carling Avenue, Suite 304, Ottawa, ON K1Z 8P9  
 T 613 714 7200 rjc.ca
- ARCHITECTES - Architect**  
**NEUF architect(e)s**  
 630 boul. René-Lévesque O. 32e étage, Montréal, QC H3B 1S6  
 T 514 847 1117 neuf.ca
- INGÉNIEUR MÉCANIQUE - Mechanical Engineer**  
**BUILDing Consultants**  
 6455 rue Dorval-Lesieur, Suite 110, Boisbriand, QC J7H 0E8  
 T 514 718 6841 building-consultants.ca
- INGÉNIEUR ÉLECTRIQUE - Electrical Engineer**  
**BUILDing Consultants**  
 6455 rue Dorval-Lesieur, Suite 110, Boisbriand, QC J7H 0E8  
 T 514 718 6841 building-consultants.ca
- SCÉAU / Seal**



CLIENT Client  
**SINA**  
 3500 boul. La Capitale, Suite 1200, Laval, QC H7T 2P5  
 T 514 962 7462 sina.ca

OUVRAGE Project  
**788 MARCH ROAD RESIDENTIAL**

EMPLACEMENT Location NO PROJET No.  
**OTTAWA, ON 13109**

NO	REVISION	DATE (aa-mm-jj)
B	FOR FOUNDATION PERMIT	2024-04-26

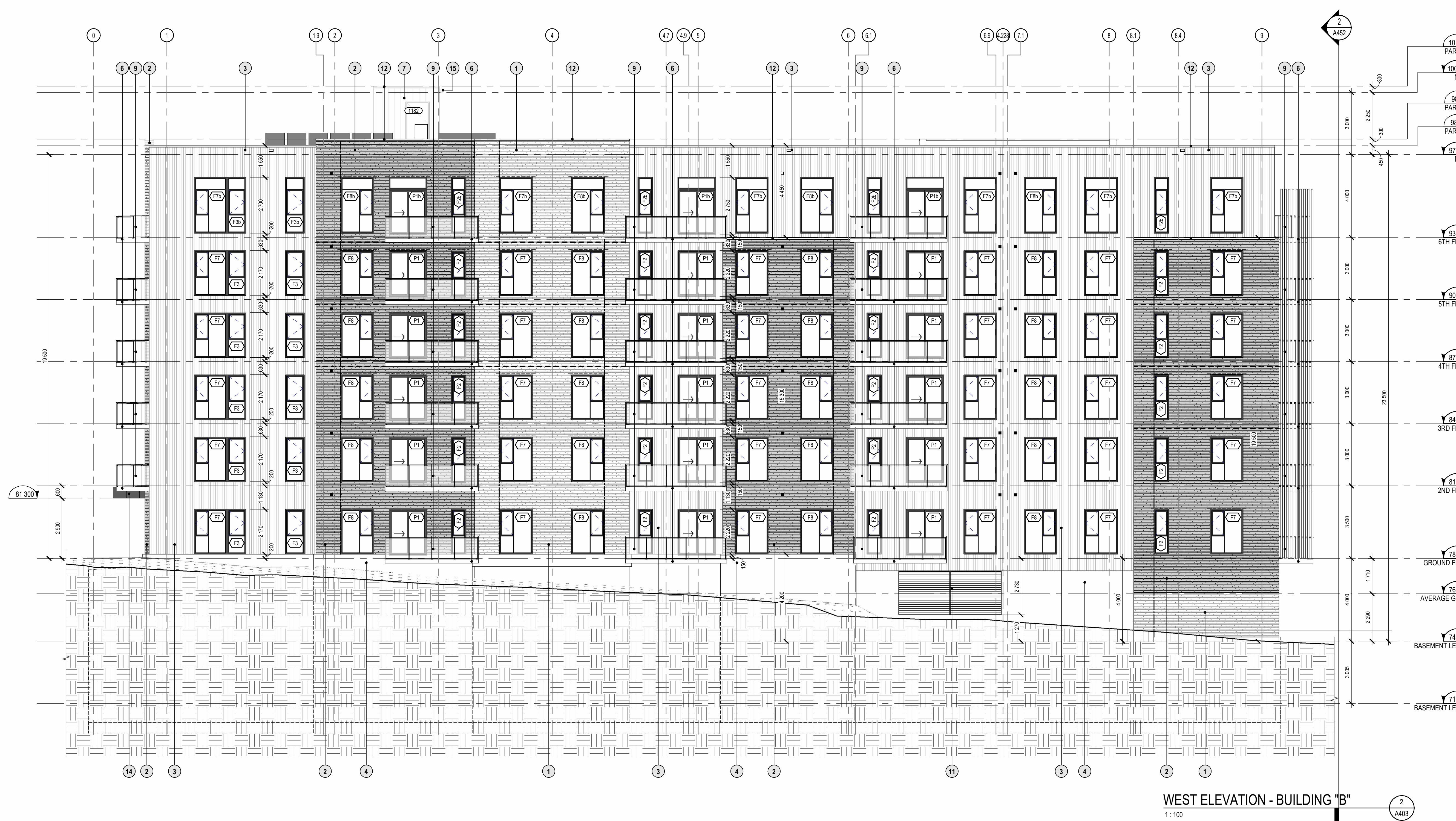
DESSINÉ PAR Drawn by VÉRIFIÉ PAR Checked by  
**N.S.H/B.R. B.R.**

DATE (aa mm jj) ÉCHELLE Scale  
**2024-04-04 1 : 100**

TITRE DU DESSIN Drawing Title  
**ELEVATIONS - BUILDING "B"**

REVISION	Revision	NO. DESSIN	Dwg Number
<b>B</b>		<b>A402</b>	

**Preliminary DO NOT USE FOR CONSTRUCTION**



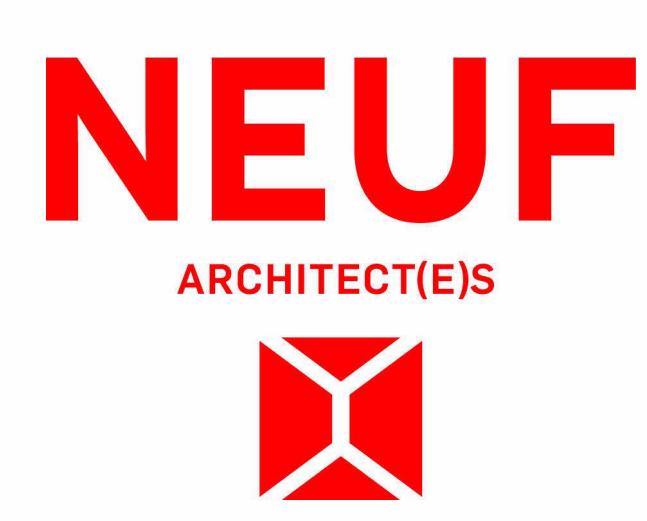
ELEVATION KEYNOTE LEGEND	
NOTE	DESCRIPTION
1	ARCHITECTURAL MASONRY B.C. ARBISCREAF, "WALNUT OR MENDOTA GRAY"
2	ARCHITECTURAL MASONRY B.C. ARBISCREAF, "SPAL"
3	STEEL BRING IAC METAL, NORWOOD MIN. "BLACK WALNUT"
4	ACRYLIC, LIGHT GREY COLOR
5	ACRYLIC, CHARCOAL COLOR
6	EXPOSED CONCRETE
7	METAL CLADDING PANEL, LIGHT GREY COLOR
8	WINDOW WALL DOUBLE GLASS WITH ALUMINUM PROFILE, BLACK COLOR
9	GLAZING WITH TINTED GLASS WITH ALUMINUM PROFILE, BLACK COLOR
10	FRONT SCREEN WITH FRIGTED GLASS WITH ALUMINUM PROFILE, BLACK COLOR, 800MM OF HEIGHT
11	CLADDING, COLOR MATCHED TO ADJACENT MATERIAL
12	METAL FLASHING, COLOR MATCHED TO ADJACENT MATERIAL
13	ANNEXE, SPOT
14	METAL PANEL FOR ENTRANCE CANOPY, BLACK COLOR
15	GLAZING, BLACK COLOR
16	GLAZING, BLACK COLOR
17	PRE-FINISHED METAL SCOPPER
18	VENT CLADDING, SEE MECHANICAL DRAWINGS
19	FRONT SCREEN WITH FRIGATED GLASS WITH ALUMINUM PROFILE, BLACK COLOR

ELEVATION LEGEND	
	EXTERIOR FINISH REFER TO ELEVATION KEYNOTE LEGEND
	WINDOW TYPE REFER TO WINDOW SCHEDULE
	ANODIZED ALUMINUM WALL BOX VENTILATION LOUVER, COORDINATE WITH MECHANICAL ENGINEER DRAWINGS FOR LOCATION.
	GALVANIZED STEEL STRUCTURAL STEEL ANGLE, LEVELS AND LOCATIONS TO BE COORDINATED WITH THE ARCHITECTURAL DETAILS/ SECTIONS, MASONRY COURSEING, STEEL SHOP DRAWINGS AND STRUCTURAL ENGINEER DRAWINGS.
	PRE-PANDED GALVANIZED STEEL STRUCTURAL ANGLE LEVELS AND LOCATIONS TO BE COORDINATED WITH THE ARCHITECTURAL DETAILS/ SECTIONS, FLOOR PLATE PLANS, MASONRY COURSEING, STEEL SHOP DRAWINGS AND STRUCTURAL ENGINEER DRAWINGS.
	MASONRY EXPANSION JOINT REFER TO PLAN DETAILS

NOTES:  
1. EXHAUST VENT LOCATION TO BE VERIFIED AND COORDINATED WITH MECHANICAL ENGINEER DRAWINGS.

- NOTES GÉNÉRALES - General Notes**
- Ces documents d'architecture sont la propriété exclusive de NEUF architectes et ne peuvent être réutilisés, reproduits ou copiés sans autorisation écrite préalable. / These architectural documents are the exclusive property of NEUF architectes and cannot be used, copied or reproduced without written pre-authorization.
  - Les dimensions apparaissant sur ces documents doivent être vérifiées par l'entrepreneur avant le début des travaux. / All dimensions appearing on these documents must be verified by the contractor before to start the work.
  - Vous devez vous référer à tous les documents de référence des autres professionnels. / The architect must be notified of all errors, omissions and discrepancies between these documents and those of the other professionals.
  - Les dimensions sur ces documents doivent être lues et mesurées. / The dimensions on these documents must be read and not measured.
- PLANNIFICATEUR - Planner**  
**FOTENN Planning and Urban Design**  
 390 Cooper Street, Suite 300, Ottawa, ON K2P 2H7  
 T 613 730 5709 fotenn.com
- ARCHITECTURE DE PAYSAGE, Landscape Architect**  
**GJA Inc. Gino, J. Aiello**  
 110 Dabury Road, Unit 9, Ottawa, ON K2T 0C2  
 T 613 293 8750 gja.com
- INGÉNIEUR TRANSPORT - Transportation Engineering**  
**PARSONS**  
 1225 Somerset Street, Suite 100, Ottawa, ON K1J 1T2  
 T 613 238 4160 parsons.com
- CIVIL - Civil**  
**McINTOSH PERRY**  
 115 Wellington Road RR 3 Carr, Ottawa, ON K0A 1L0  
 T 613 836 2184 mcintoshperry.com
- STRUCTURE - Structure**  
**RJC Engineers**  
 1545 Carling Avenue, Suite 304, Ottawa, ON K1Z 8P9  
 T 613 714 7200 rjc.ca
- ARCHITECTES - Architect**  
**NEUF architect(e)s**  
 630 boul. René-Lévesque O. 32e étage, Montréal, QC H3B 1S6  
 T 514 947 1117 neuf.ca
- INGÉNIEUR MÉCANIQUE - Mechanical Engineer**  
**BUILDing Consultants**  
 6455 rue Dorval-Lesieur, Suite 110, Boisbriand, QC J7H 0E8  
 T 514 718 6841 building-consultants.ca
- INGÉNIEUR ÉLECTRIQUE - Electrical Engineer**  
**BUILDing Consultants**  
 6455 rue Dorval-Lesieur, Suite 110, Boisbriand, QC J7H 0E8  
 T 514 718 6841 building-consultants.ca
- SCAU / Seal**



CLIENT Client  
**SINA**  
 3500 boul. La Capitale, Suite 1200, Laval, QC H7P 2P5  
 T 514 662 7462 sina.ca

OUVRAGE Project  
**788 MARCH ROAD RESIDENTIAL**

EMPLACEMENT Location NO PROJET No.  
**OTTAWA, ON 13109**

NO	REVISION	DATE (aa-mm-jj)
B	FOR FOUNDATION PERMIT	2024-04-26

Preliminary  
DO NOT USE FOR  
CONSTRUCTION

DESSINÉ PAR Drawn by VÉRIFIÉ PAR Checked by  
**N.S.H/B.R. B.R.**  
 DATE (aa mm jj) ÉCHELLE Scale  
 2024-06-04 1 : 100  
 TITRE DU DESSIN Drawing Title

**ELEVATIONS - BUILDING "B"**

REVISION Revision NO. DESSIN. Day Number  
**B A403**

A403 EAST ELEVATION - BUILDING "B" 1:100