

PROJECT STATUS:
ISSUED FOR SITE PLAN CONTROL

Revision Schedule		
No.	Description	Revision Date
A	ISSUED FOR SPC	04/26/2023
B	RE-ISSUED FOR SPC	09/15/2023
C	RE-ISSUED FOR SPC	12/15/2023
D	RE-ISSUED FOR SPC	02/09/2024
E	RE-ISSUED FOR SPC	04/12/2024

SEAL: **ABELEARCHITECTURE**
THOMAS C. ABLE, ARCHITECT OAA, T. 604.662.6918

TRADE CONTRACTORS SHALL VERIFY ALL DIMENSIONS AND REPORT ANY DISCREPANCIES OR INCONSISTENCIES TO SEYMOUR PACIFIC DEVELOPMENTS LTD., WITHOUT DELAY, FOR CLARIFICATION AND/OR CONFIRMATION. DO NOT SCALE DRAWINGS. DESIGNS REPRESENTED AND DRAWINGS USED AS INSTRUMENTS OF SERVICE SHALL REMAIN THE COPYRIGHT AND PROPERTY OF SEYMOUR PACIFIC DEVELOPMENTS LTD. ANY REPRODUCTION OR USE FOR ANY PURPOSE OTHER THAN THAT AUTHORIZED BY SEYMOUR PACIFIC DEVELOPMENTS LTD. IS PROHIBITED.

CONTRACTORS SHALL REMAIN FAMILIAR WITH, SHALL REFER TO, AND SHALL PERFORM IN ACCORDANCE WITH LOCAL LAWS, REGULATIONS AND BUILDING CODES. CONTRACTORS SHALL MAINTAIN GOOD INDUSTRY BUILDING AND SAFETY PRACTICES CONSISTENT WITH THE CONTRACT INTENT AND THE REQUIREMENTS OF JURISDICTIONAL AUTHORITIES.

ADDITIONAL CLAIMS AND COSTS RELATED TO NON-MATERIAL CHANGES WILL NOT BE ACCEPTED BY SEYMOUR PACIFIC DEVELOPMENTS LTD. NON-MATERIAL CHANGES ARE DEEMED TO BE PLAN CHANGES OR SPECIFICATION ADJUSTMENTS THAT DO NOT SUBSTANTIALLY AFFECT THE VALUE, TIME, COST AND QUALITY OF CONSTRUCTION.

CONTRACTORS SHALL MAKE EVERY REASONABLE EFFORT TO MAINTAIN SCHEDULE TARGETS AND PROVIDE GOOD EFFICIENCY, PROGRESS, WORKMANSHIP AND QUALITY TOWARD DEFICIENCY-FREE RESULTS.



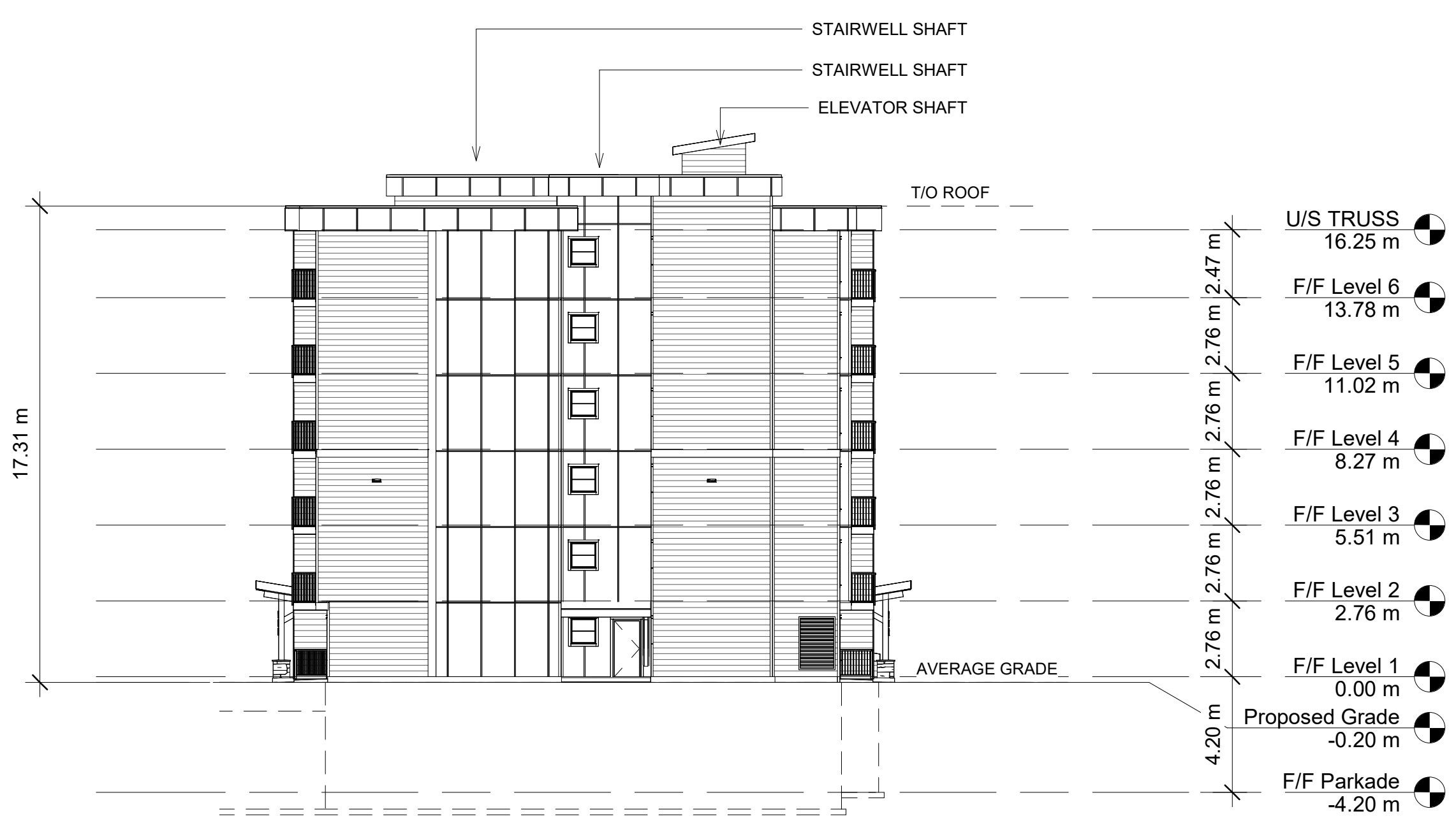
1 NORTH ELEVATION
1 : 175



2 SOUTH ELEVATION
1 : 175



3 EAST ELEVATION
1 : 175

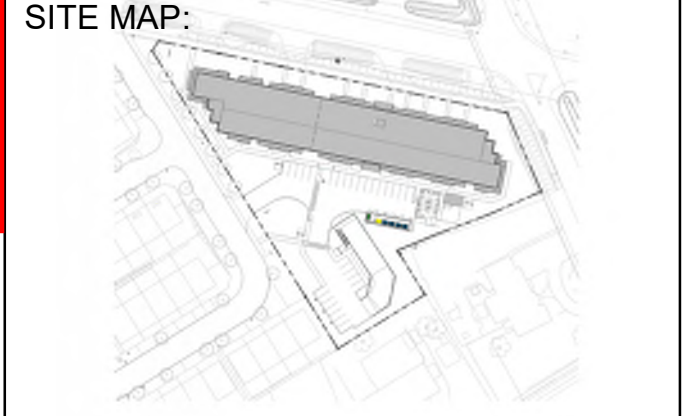


4 WEST ELEVATION
1 : 175

[Signature]
JOHN SEVIGNY C.E.T.
MANAGER (A), DEVELOPMENT REVIEW EAST
PLANNING, DEVELOPMENT & BUILDING SERVICES
DEPARTMENT, CITY OF OTTAWA

APPROVED
By sevignyjo at 3:30 pm, Jun 21, 2024

PROJECT NAME:	RHYTHM APARTMENTS
PROJECT NUMBER:	VP 2211
ADDRESS:	3080 NAVAN ROAD, OTTAWA
DRAWING TITLE:	B/W - ELEVATION
DRAWN BY:	EC
CHECKED BY:	CG
DATE:	APRIL 12, 2024
SCALE:	1 : 175
DRAWING #:	A3.00
REV #:	E



JOHN SEVIGNY C.E.T.
MANAGER (A), DEVELOPMENT REVIEW EAST
PLANNING, DEVELOPMENT & BUILDING SERVICES
DEPARTMENT, CITY OF OTTAWA

APPROVED
By sevignyjo at 3:30 pm, Jun 21, 2024

PROJECT STATUS:
ISSUED FOR SITE PLAN CONTROL

Revision Schedule		
No.	Description	Revision Date
A	ISSUED FOR SPC	04/26/2023
B	RE-ISSUED FOR SPC	09/15/2023
C	RE-ISSUED FOR SPC	12/15/2023
D	RE-ISSUED FOR SPC	02/09/2024
E	RE-ISSUED FOR SPC	04/12/2024

SEAL: **ABELEARCHITECTURE**
THOMAS C. ABLE, ARCHITECT OAA, T. 604.662.6818

TRADE CONTRACTORS SHALL VERIFY ALL DIMENSIONS AND REPORT ANY DISCREPANCIES OR INCONSISTENCIES TO SEYMOUR PACIFIC DEVELOPMENTS LTD., WITHOUT DELAY, FOR CLARIFICATION AND/OR CONFIRMATION. DO NOT SCALE DRAWINGS. DESIGNS REPRESENTED AND DRAWINGS USED AS INSTRUMENTS OF SERVICE SHALL REMAIN THE COPYRIGHT AND PROPERTY OF SEYMOUR PACIFIC DEVELOPMENTS LTD. ANY REPRODUCTION OR USE FOR ANY PURPOSE OTHER THAN THAT AUTHORIZED BY SEYMOUR PACIFIC DEVELOPMENTS LTD. IS PROHIBITED.

CONTRACTORS SHALL REMAIN FAMILIAR WITH, SHALL REFER TO, AND SHALL PERFORM IN ACCORDANCE WITH LOCAL LAWS, REGULATIONS AND BUILDING CODES. CONTRACTORS SHALL MAINTAIN GOOD INDUSTRY BUILDING AND SAFETY PRACTICES CONSISTENT WITH THE CONTRACT INTENT AND THE REQUIREMENTS OF JURISDICTIONAL AUTHORITIES.

ADDITIONAL CLAIMS AND COSTS RELATED TO NON-MATERIAL CHANGES WILL NOT BE ACCEPTED BY SEYMOUR PACIFIC DEVELOPMENTS LTD. NON-MATERIAL CHANGES ARE DEEMED TO BE PLAN CHANGES OR SPECIFICATION ADJUSTMENTS THAT DO NOT SUBSTANTIALLY AFFECT THE VALUE, TIME, COST AND QUALITY OF CONSTRUCTION.

CONTRACTORS SHALL MAKE EVERY REASONABLE EFFORT TO MAINTAIN SCHEDULE TARGETS AND PROVIDE GOOD EFFICIENCY, PROGRESS, WORKMANSHIP AND QUALITY TOWARD DEFICIENCY-FREE RESULTS.

PROJECT NAME:
RHYTHM APARTMENTS

PROJECT NUMBER:
VP 2211

ADDRESS:
3080 NAVAN ROAD, OTTAWA

DRAWING TITLE:
COLOUR - ELEVATIONS

DRAWN BY: EC
CHECKED BY: CG
DATE: APRIL 12, 2024
SCALE: As indicated

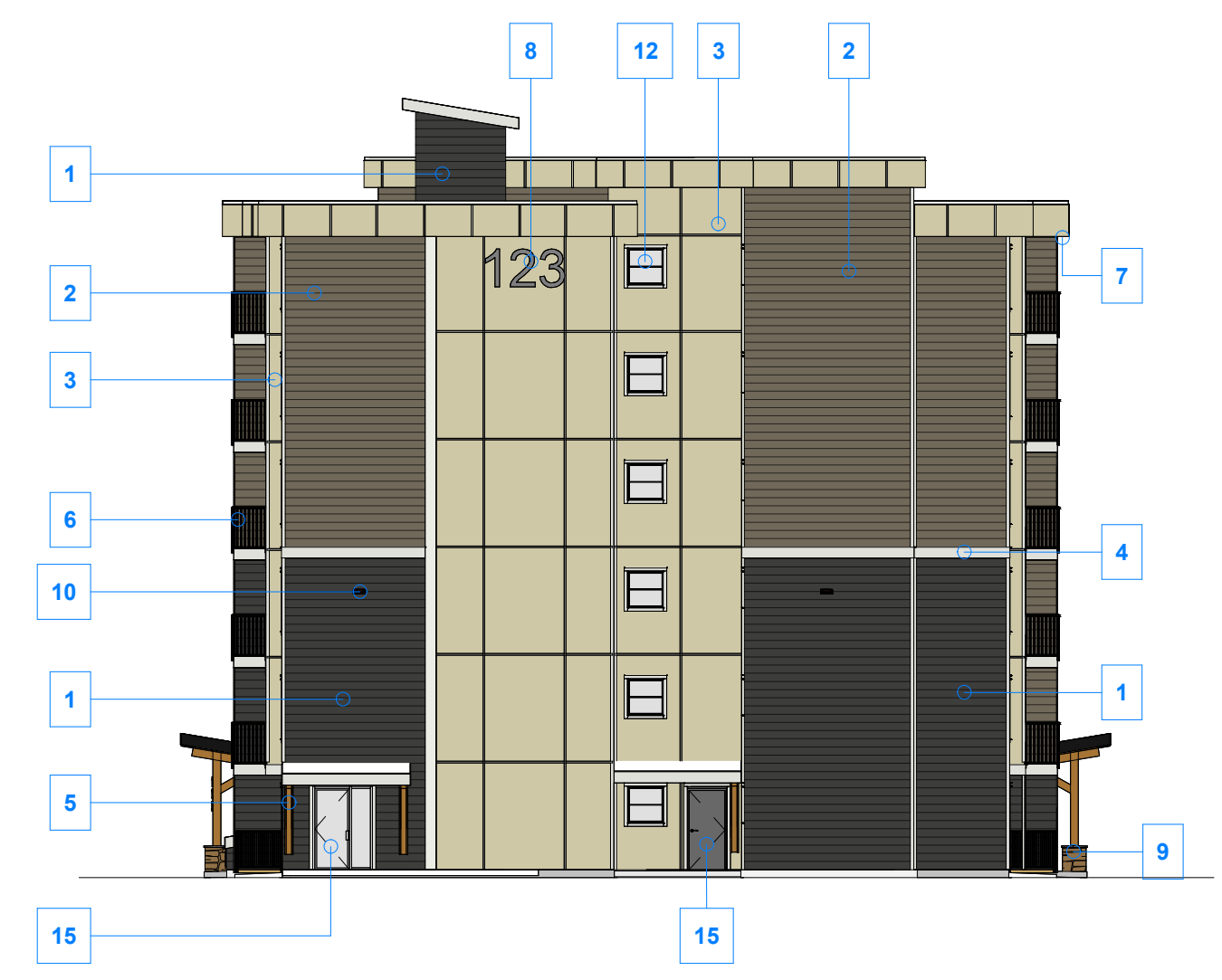
DRAWING #: **A3.01** REV #: **E**



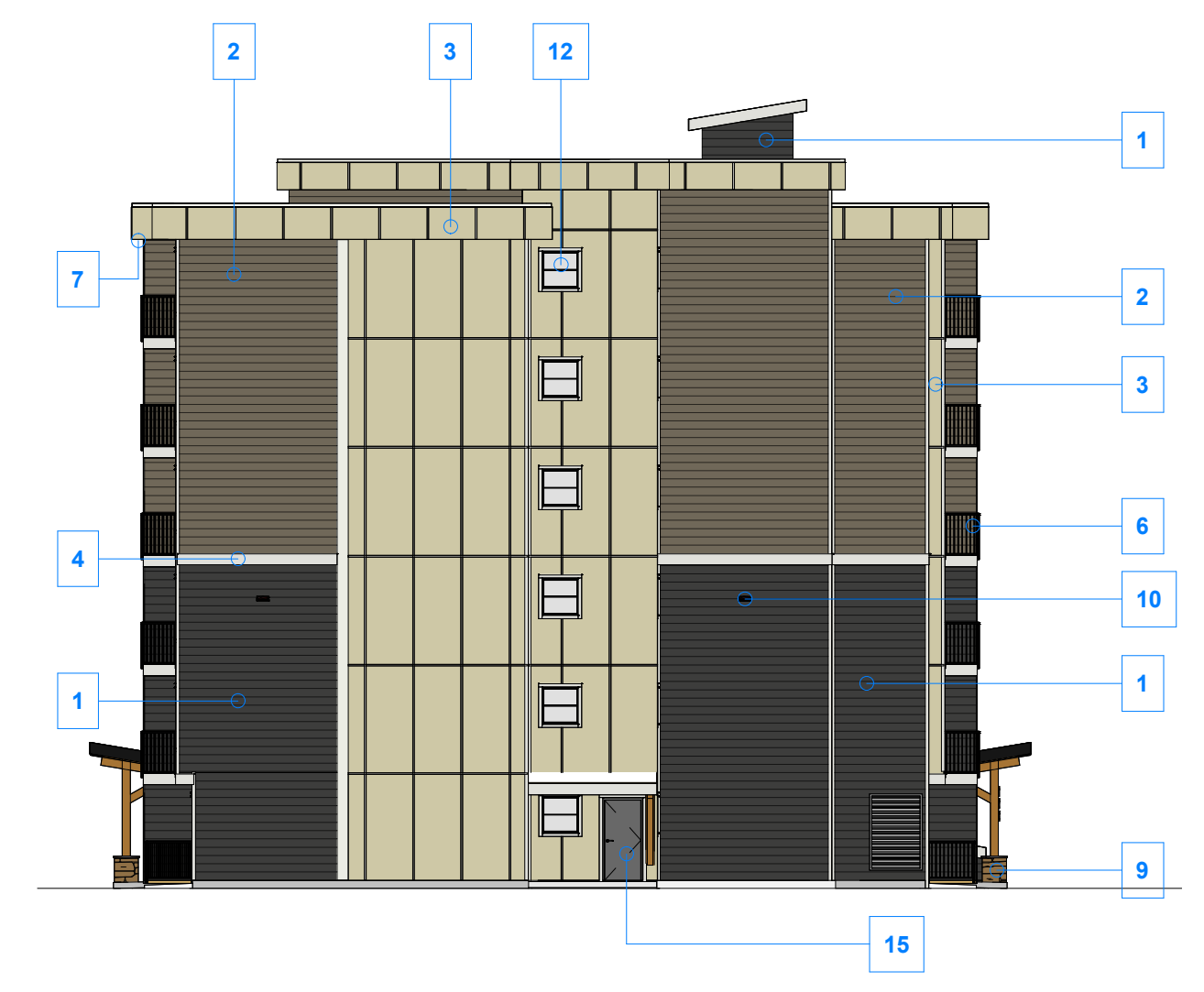
1 COLOUR ELEVATION - NORTH ELEVATION
1 : 175



2 COLOUR ELEVATION - SOUTH ELEVATION
1 : 175



3 COLOUR ELEVATION - EAST ELEVATION
1 : 175



4 COLOUR ELEVATION - WEST ELEVATION
1 : 175

1 PLANK - CEDARMILL (IRON GREY)	7 3 PANEL CLASSIC SOFFIT - WHITE	13 PATIO DOOR - SLIDER - WHITE
2 PLANK - CEDARMILL (TIMBER BARK)	8 EASY TRIM / BUILDING NUMBERING - STANDARD CLEAR ANODIZED	14 PATIO DOOR - SWING - WHITE
3 PANEL - SMOOTH (NAVAJO BEIGE)	9 CULTURED STONE - TBC	15 ENTRY DOOR - SWING - ALUMINUM
4 TRIM - SMOOTH (ARTIC WHITE)	10 LED WALL SCENCE	
5 CEDAR ACCENTS - STAIN TBC	11 WINDOW - SLIDER - WHITE	
6 ALUMINUM RAILING - WELDED SYSTEM - BLACK	12 WINDOW - FIXED - WHITE	