

EXISTING MH
TOP 74.99

EXISTING MH
TOP 74.60

E_TRANS
102

INNES ROAD (REGIONAL ROAD No. 30)
ROAD ALLOWANCE BETWEEN CONCESSIONS 2 AND 3 (OTTAWA FRONT)

EXISTING MH
TOP 74.85

EXISTING CB
TOP 74.95

EXISTING MH
TOP 74.98

EXISTING MH
TOP 74.93

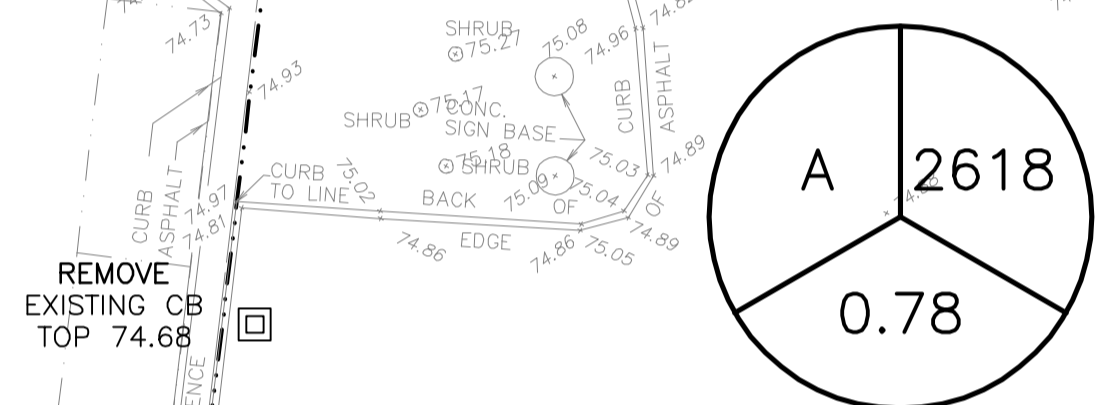
EXISTING CB
TOP 74.56

EXISTING CB
TOP 74.60

EXISTING CB
TOP 74.75

EXISTING MH
TOP 75.13

SITE BENCHMARK
MAG NAIL IN HYDRO POLE
ELEV = 75.91



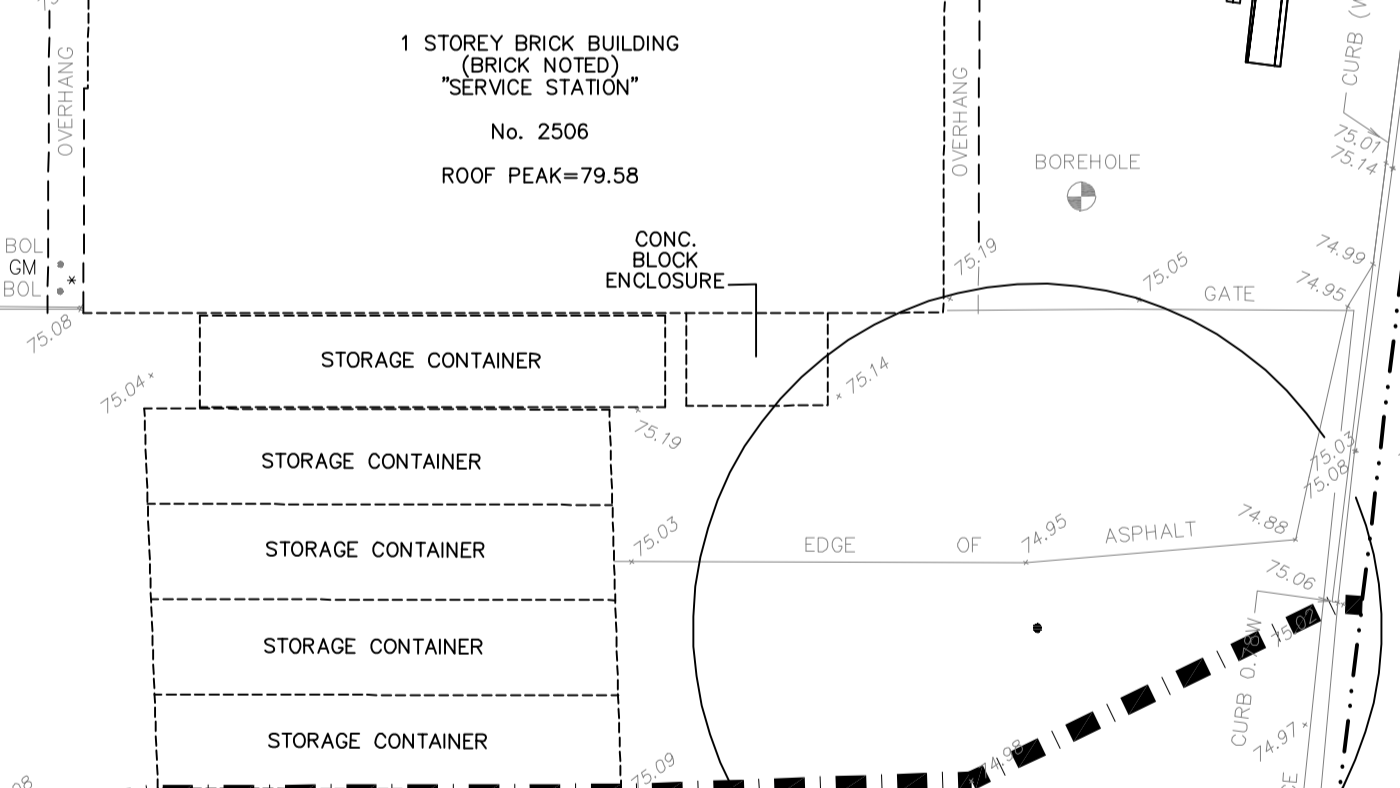
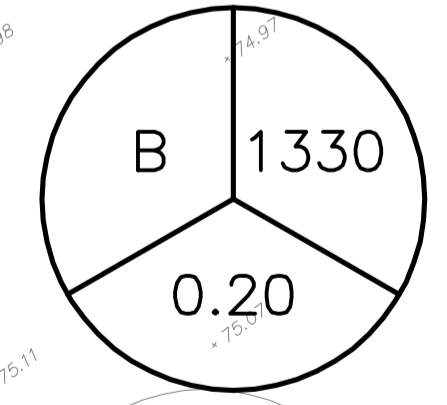
LOT 15

CONCESSION

(OTTAWA FRONT)

EXISTING MH
TOP 74.66

EXISTING MH
TOP 74.76



1 STOREY BRICK AND STUCCO COMMERCIAL BUILDING
(CONC BLOCK FDN)
No. 2514
TOW=75.36
DOOR SILL=75.36
ROOF PEAK=79.67

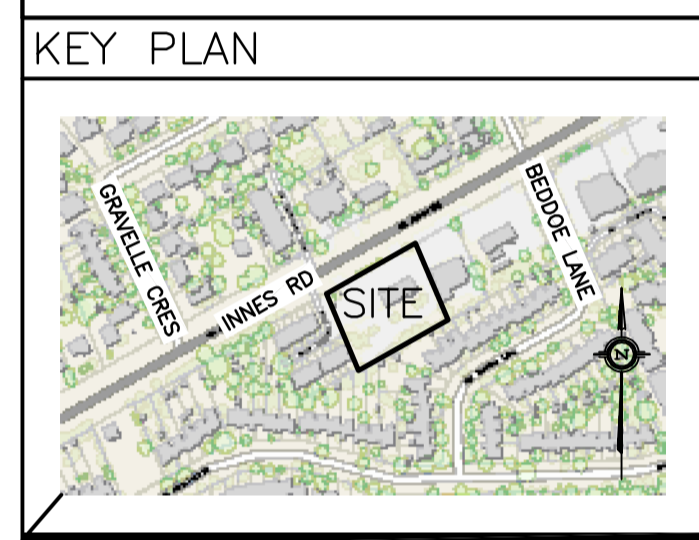
LEGEND

DRAINAGE AREA

AREA (sq.m)

X XXX
0.XX

5 YEAR RUNOFF COEFFICIENT



No.	DATE	REVISION
3	MAY 6-24	ISSUED FOR APPROVAL
2	MAY 2-24	ISSUED FOR COORDINATION
1	DEC 21-23	ISSUED FOR APPROVAL

D. B. GRAY ENGINEERING INC.
Stormwater Management - Grading & Drainage - Storm & Sanitary Sewers - Watermain

700 Long Point Circle 613-425-8044
Ottawa, Ontario d.gray@dbgrayengineering.com

Project
STACKED TOWNS
BUILDING A - 20 UNITS
BUILDING B - 24 UNITS
2506 INNES ROAD
OTTAWA, ONTARIO

Drawing Title
PRE-DEVELOPMENT DRAINAGE PLANS

Engineer's Seal

 NOT VALID UNLESS SIGNED & DATED

Drawn D.B.G.
H. Scale 1:200
V. Scale
Date Dec 21-23
Job No. 23087

Drawing No.
C-9
of 10