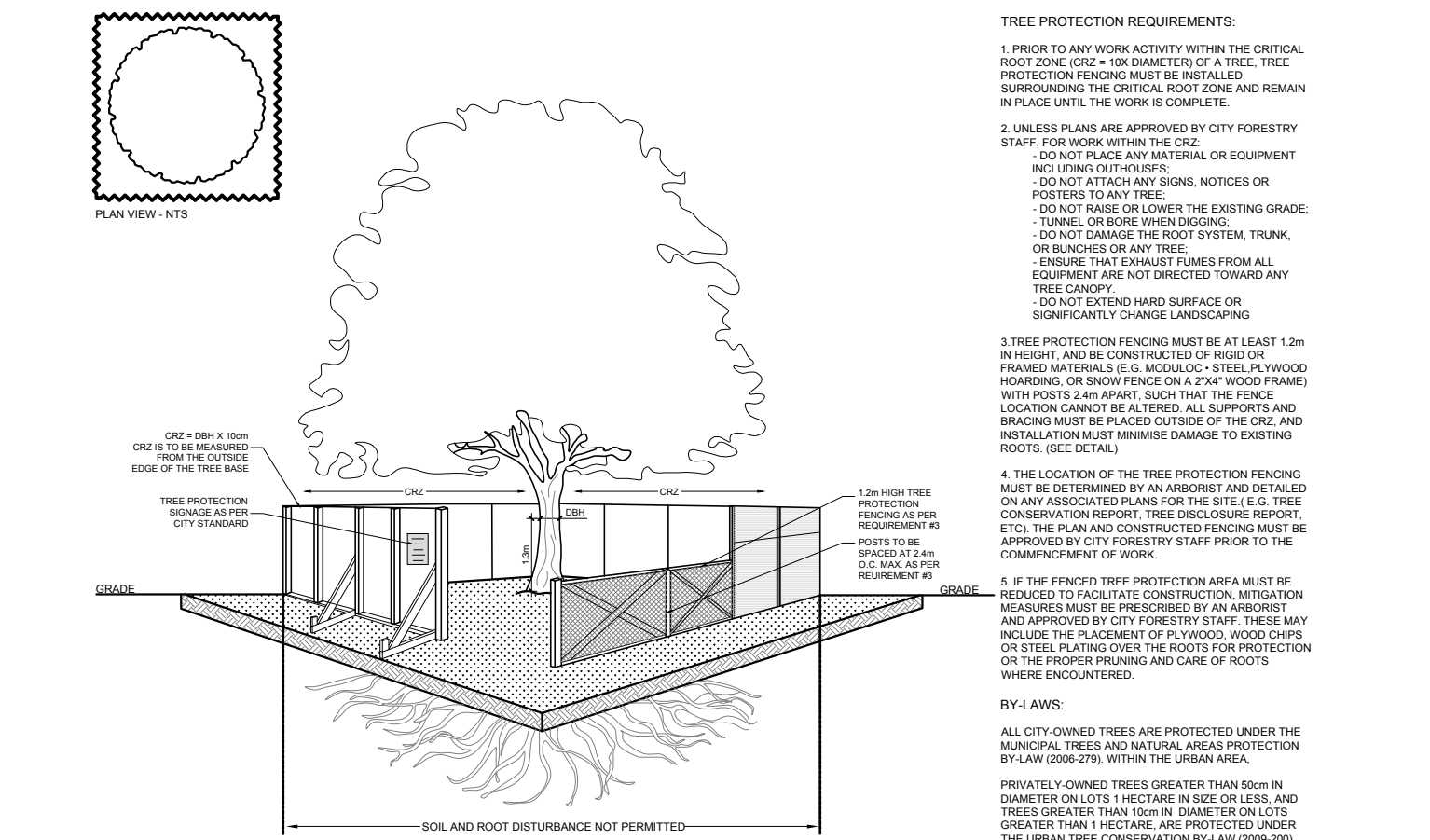


EXISTING TREE LIST						
KEY	QTY	BOTANICAL NAME	COMMON NAME	SIZE	CONDITION	REMARKS
TREES						
AP	1	<i>Acer platanoides</i>	Norway Maple	170-600mm dbh	Good	To remain
NM	1	<i>Acer platanoides</i>	Norway Maple	170mm dbh	Poor	To be removed
QR	1	<i>Quercus rubra</i>	Red Oak	420mm dbh	Good	To remain
TO	#	<i>Thuja occidentalis</i>	Eastern White Cedar	100-300mm dbh	Dead-good	To remain
UP	3	<i>Ulmus pumila</i>	Siberian Elm	300-590mm dbh	Good	To remain

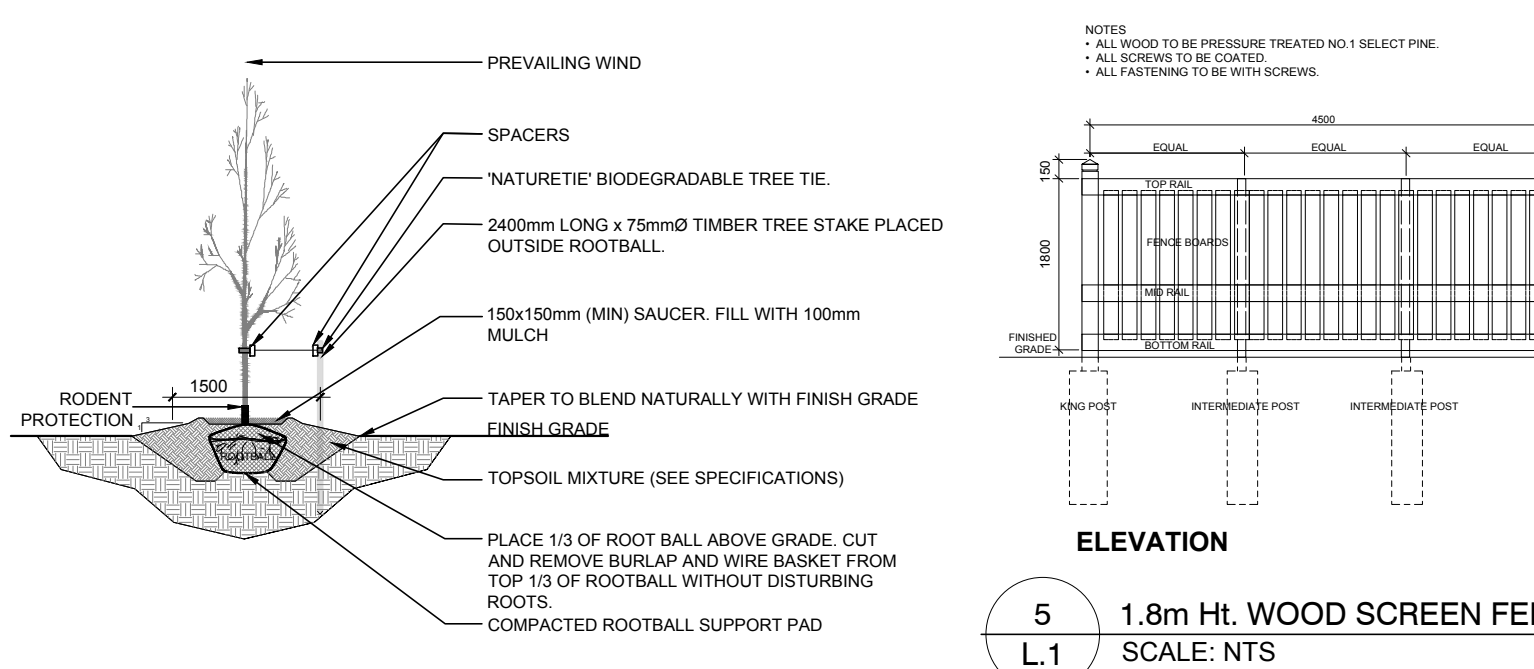
PROPOSED PLANT LIST						
KEY	QTY	BOTANICAL NAME	COMMON NAME	SIZE	CONDITION	Remarks
DECIDUOUS TREES						
HB	1	<i>Celtis occidentalis</i>	Hackberry	60mm cal.	B&B	Single Leader
SM	1	<i>Acer saccharum</i>	Sugar Maple	60mm cal.	B&B	Single Leader
SHRUBS						
AH	8	<i>Hydrangea arborescens</i> 'Annabelle'	Annabelle Hydrangea	1 gallon pot	Potted	Space 1000mm o.c.
PERENNIALS						
RS	6	<i>Hemerocallis</i> 'Ruby Stella'	Ruby Stella Daylily	100mm pot	Potted	Space 400mm o.c.

- GENERAL NOTES:**
- It is the responsibility of the appropriate contractor or official to report any errors, omissions or discrepancies on this plan with actual site conditions to the Landscape Architect before proceeding with construction.
 - The contractor is to notify all utility companies and authorities prior to any excavation and ascertain locations of underground services.
 - The contractor is to reinstate all areas and items damaged as a result of construction activity.
 - The contractor is to comply with all pertinent codes and by-laws.
 - The contractor is to maintain a positive surface run-off throughout the entire construction period.
 - The Landscape Architect is not responsible for subsurface conditions.
 - The contractor is to identify all existing trees to remain on site with the Landscape Architect prior to construction.
 - The contractor is to stake the proposed location of all plant material in conjunction with the Landscape Architect prior to excavation.
 - Minimum distances for selected deciduous trees are as follows:
 - Building Foundations 7.5m
 - Sidewalks 1.5m
 - Public Streets 2.5m
 - Underground Infrastructure 2.0m
 - All trees within 1m of underground utility trenches are to be excavated by hand.
 - Remove all protective wrapping from tree trunks after installation.
 - Staking of trees shall only be performed if necessary.
 - Ensure that mulch is pulled back a min. distance of 75mm from base of tree trunk.

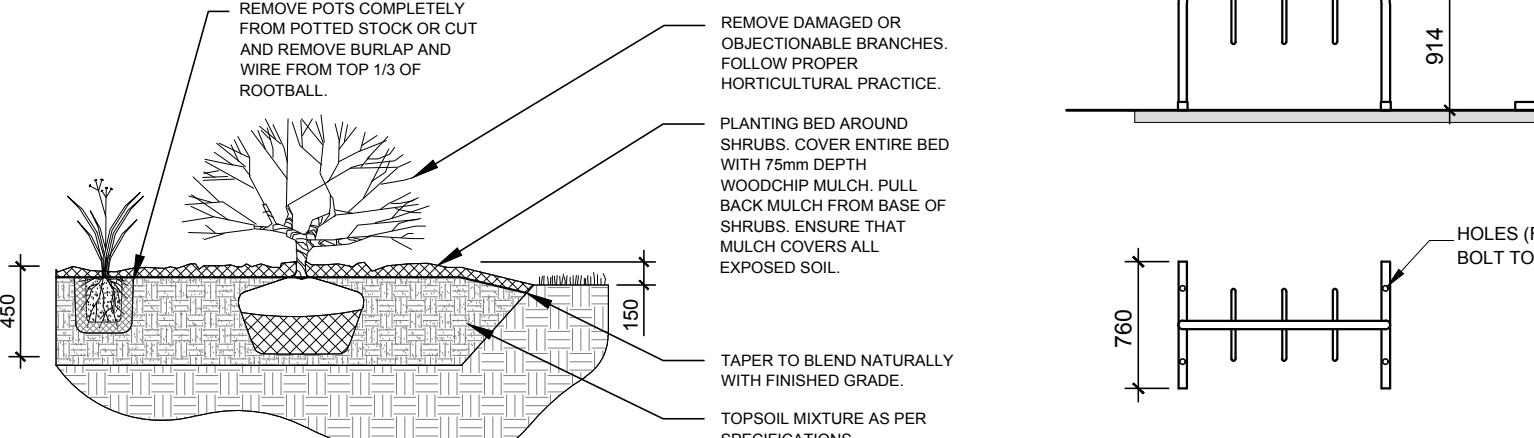
40 YEAR CANOPY CALCULATION:	
895 m2 site area	
(1) large tree proposed (154m2 ea.)	
(1) medium tree proposed (79m2 ea.)	
(3) large trees to remain (154m2 ea.)	
=695m2 canopy cover =77.6% canopy cover	
*Large trees calculated at 14m and medium at 10m	



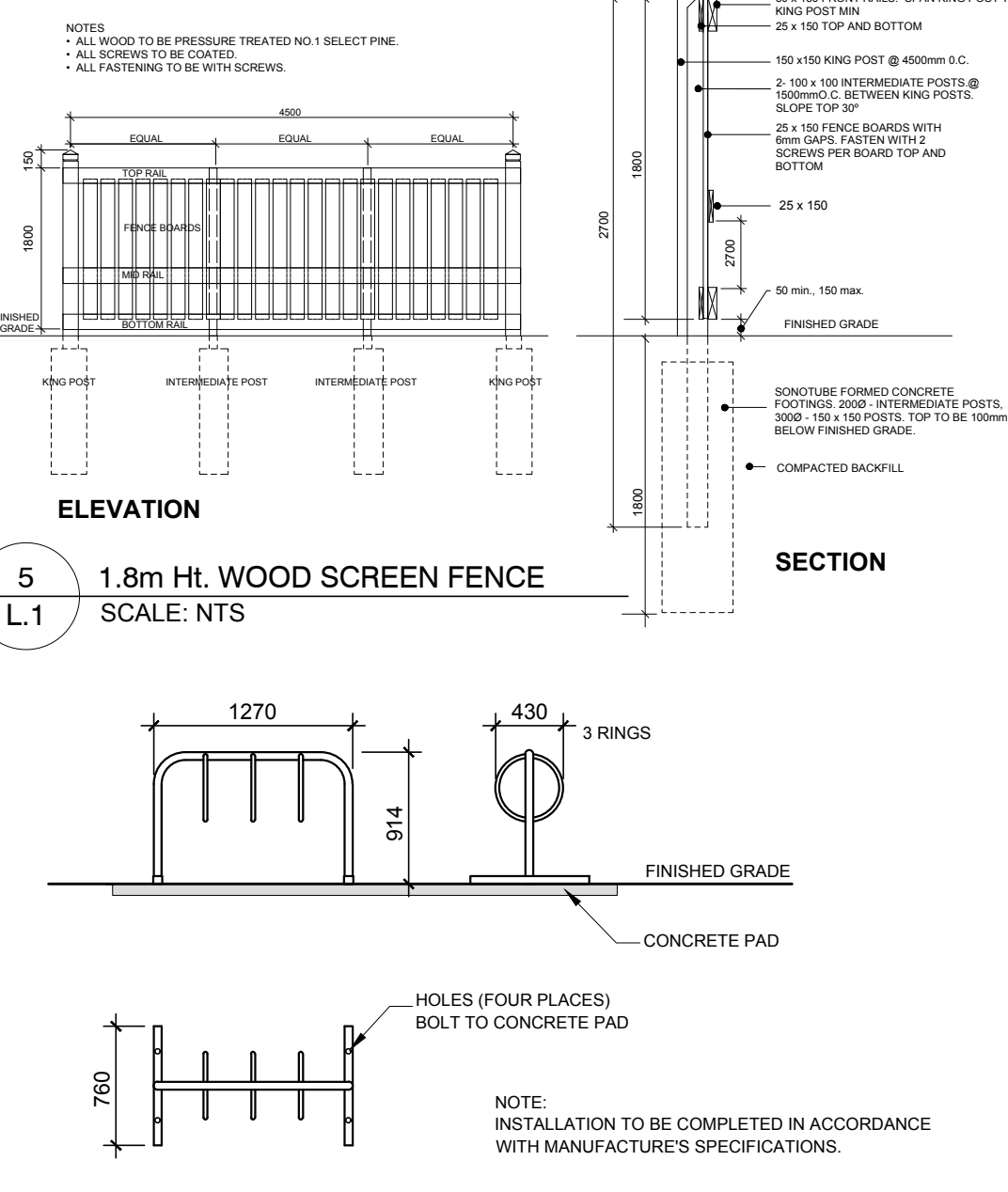
2 TREE PROTECTION FENCE
SCALE: NTS



3 DECIDUOUS TREE PLANTING
SCALE: NTS



4 SHRUB / PERENNIAL PLANTING
SCALE: NTS



6 THREE RING BIKE RACK
SCALE: NTS

CLIENT

SMART LIVING PROPERTIES

CONSULTANTS

ARCHITECTS: OTTAWA CARLETON CONSTRUCTION

CIVIL ENGINEERS:

J.L. Richards & Associates Limited
ENGINEERS • ARCHITECTS • PLANNERS

LEGEND

EXISTING TREE TO REMAIN

GROUP OF EXISTING TREES TO REMAIN

EXISTING TREE TO BE REMOVED

SOIL VOLUME REQUIRED PROPOSED DECIDUOUS TREE

PROPOSED SHRUBS / PERENNIALS

PROPOSED SOD

PROPOSED RIVERSTONE MULCH

PROPOSED PRECAST CONCRETE PAVERS

PROPOSED TREE PROTECTION FENCE

PROPOSED 1.8m HL WOOD SCREEN FENCE

PROPOSED LIGHT STANDARDS (REFER TO SITE PLAN FOR DETAILS)

7 REVISED PER NEW SITE PLAN

02/15/2024

ML

JL

6 REVISED PER SITE PLAN REVISIONS

11/29/2023

ML

JL

5 ISSUED FOR BUILDING PERMIT

03/31/2023

ML

JL

4 REVISED PER NEW SITE PLAN

04/29/2022

ML

JL

3 REVISED PER NEW SITE PLAN

03/21/2022

ML

JL

2 REVISED PER CITY COMMENTS

11/16/2021

ML

JL

1 ISSUED FOR SITE PLAN CONTROL

07/29/2021

ML

JL

No.

Issue

Date

DR

CK

JAMES B. LENNOX & ASSOCIATES INC.

LANDSCAPE ARCHITECTS

3332 CARLING AVE. OTTAWA, ONTARIO K2H 5A8

Tel. (613) 722-5168 Fax. (1866) 343-3942

PROJECT

NEW ADDITION TO EXISTING 6 STOREY BUILDING

280 LAURIER AVENUE EAST, OTTAWA ON

DRAWING

TREE CONSERVATION REPORT & LANDSCAPE PLAN

STAMP

ASSOCIATION OF LANDSCAPE ARCHITECTS

MEMBER

AS SHOWN

START DATE

JULY 2021

PROJECT NO.

21SM72162

PROJECT NORTH

DRAWING NO.

L.1

PLOT SIZE ARCH-D